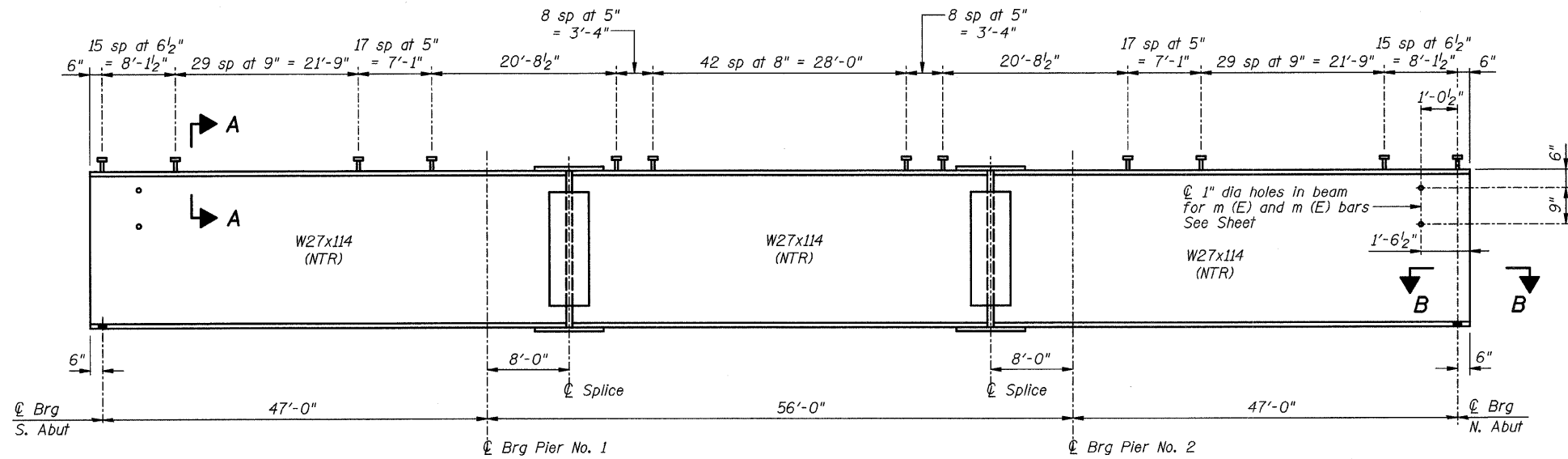


ROUTE NO.	SECTION	COUNTY	TOTAL SHEETS	SHEET NO.
FAU 7432	*	MACON	47	28
FED. ROAD DIST. NO.		ILLINOIS	PROJECT	

• 08-00602-00-BR



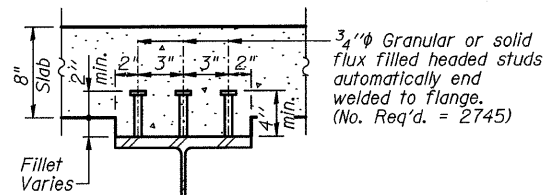
BEAM ELEVATION

"NTR" denotes plates to which notch toughness requirements are applicable.

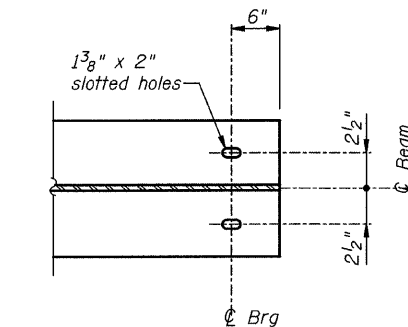
***TOP OF BEAM ELEVATIONS**

Location	Beam 1	Beam 2	Beam 3	Beam 4	Beam 5
℄ Brg at S. Abut	638.098	638.261	638.244	638.115	637.986
℄ Brg at Pier No. 1	638.307	638.457	638.441	638.303	638.164
℄ Splice 1	638.328	638.471	638.459	638.316	638.173
℄ Splice 2	638.338	638.481	638.459	638.306	638.173
℄ Brg at Pier No. 2	638.328	638.467	638.439	638.290	638.140
℄ Brg at N. Abut	638.148	638.277	638.240	638.081	637.922

* For fabrication only

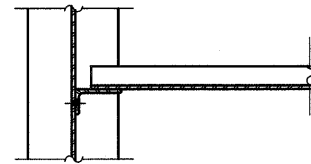


SECTION A-A

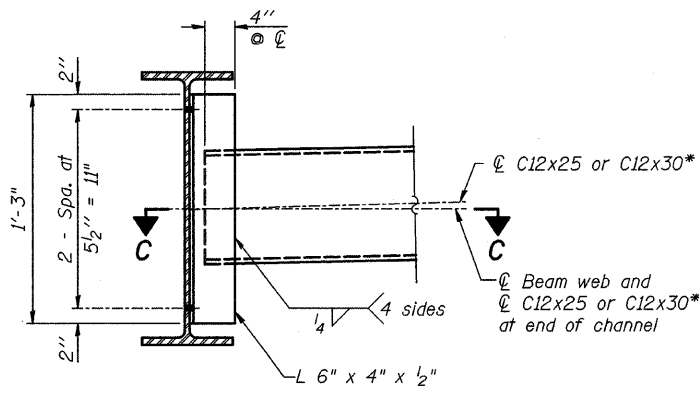


SECTION B-B

(N. Abut shown
S. Abut similar)



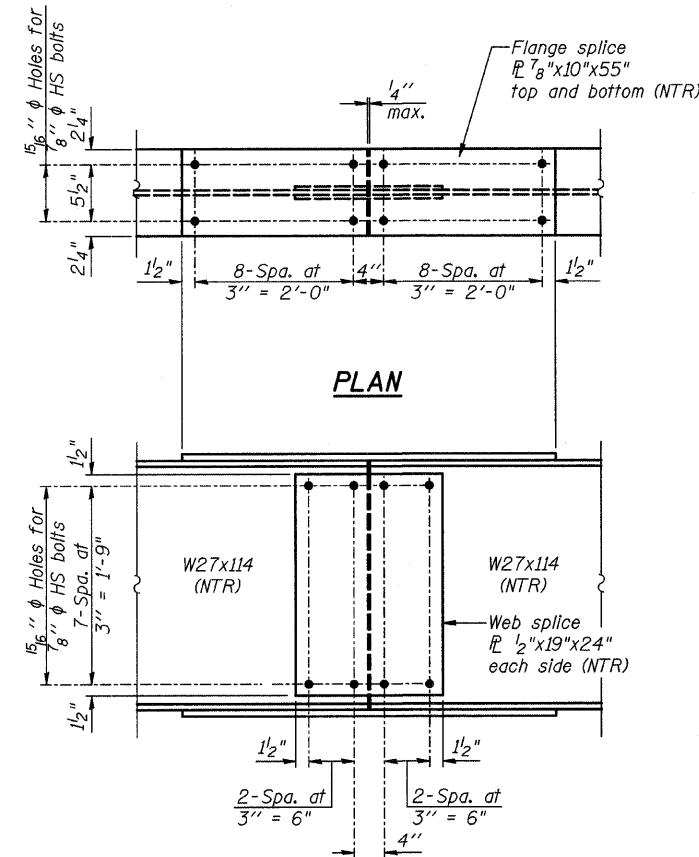
SECTION C-C



INTERIOR DIAPHRAGM

(32 Required)

- Note:
Two hardened washers required for each set of oversized holes.
* Alternate channels are permitted to facilitate material acquisition. Calculated weight of structural steel is based on the lighter section. The alternate, if utilized, shall be provided at no extra cost to the Department.
** 3/4" φ HS bolts, 15/16" φ holes



ELEVATION

SPLICE DETAIL

(10 Required)

BILL OF MATERIAL

Item	Unit	Total
Stud Shear Connectors	Each	2745
Furnishing and Erecting Structural Steel	LS	1

Note:

Structural steel shall be ASHTO M270 Grade 50W.
Load carrying components designated "NTR" shall conform to the Supplemental Requirements for Notch toughness, Zone 2.

MACARTHUR ROAD (FAU 7432) OVER STEVENS CREEK

FRAMING DETAILS

REVISIONS	SECTION 08-00602-00-BR	MACARTHUR ROAD (FAU 7432)	DRAWN BY DATE R KING 07/09
NO.	DATE	INITIALS	CHECKED BY DATE JMB 07/09
1			BOOK NUMBER 486
2			PROJECT NO. 5307
3			SHEET NO.
4			
5			
6			
7			
8			
9			
10			

HOMER L. CHASTAIN & ASSOCIATES, LLP
CONSULTING ENGINEERS
DECATUR CHICAGO
(217) 422-8844 (773) 714-0050
ROCKFORD
(815) 489-0050
184-00187