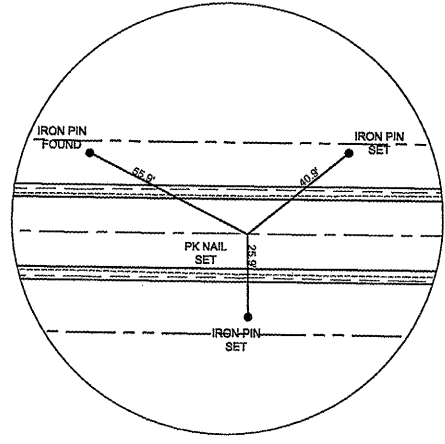
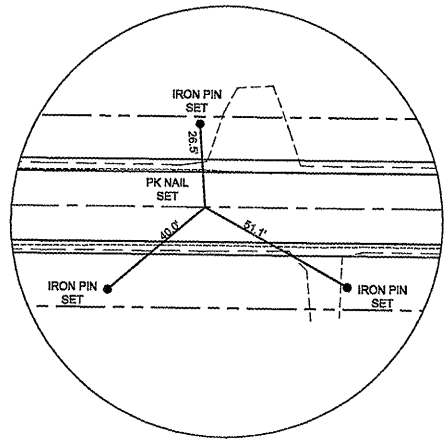


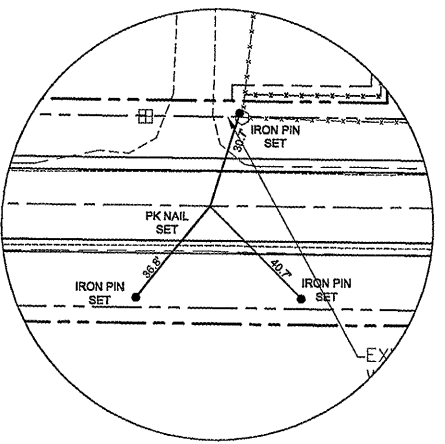
F.A.S. RTE.	SECTION	COUNTY	TOTAL SHEETS	SHEET NO.
748	06-00053-00-RS	JERSEY	110	13
STA. NA		TO STA. NA		
CONTRACT # 97375		FAP NO. RS-0748(109)		



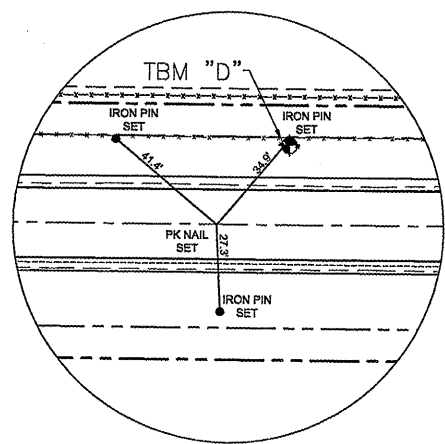
CONTROL POINT #16
DELHI ROAD
STA = 220+00



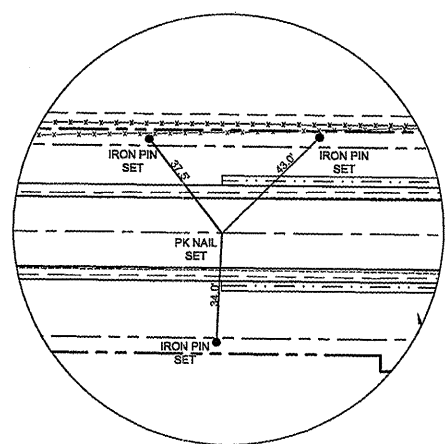
CONTROL POINT #17
DELHI ROAD
STA = 225+00



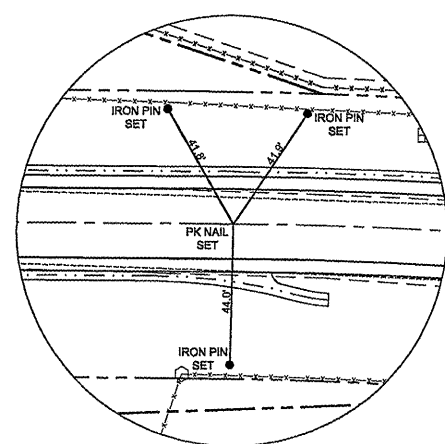
CONTROL POINT #18
DELHI ROAD
STA = 230+00



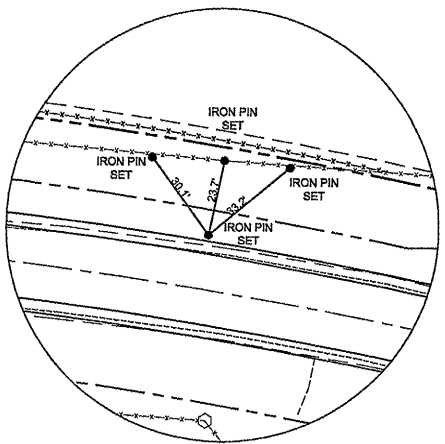
CONTROL POINT #19
DELHI ROAD
STA = 235+00



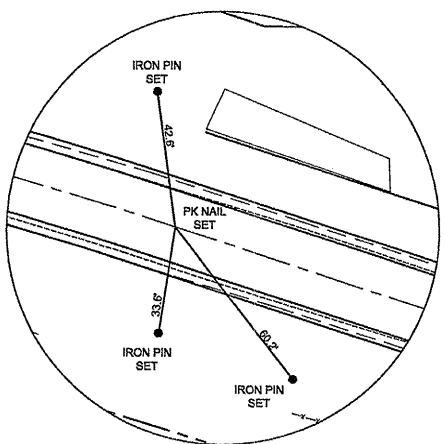
CONTROL POINT #20
DELHI ROAD
STA = 240+00



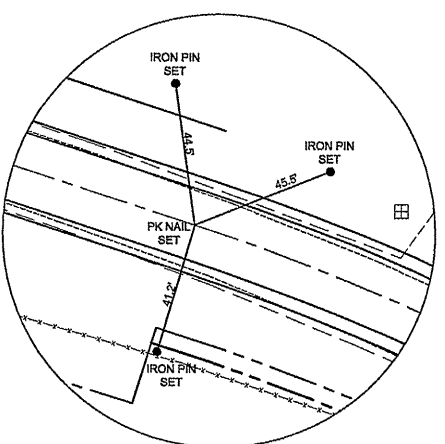
CONTROL POINT #21
DELHI ROAD
PC STA = 244+23.47



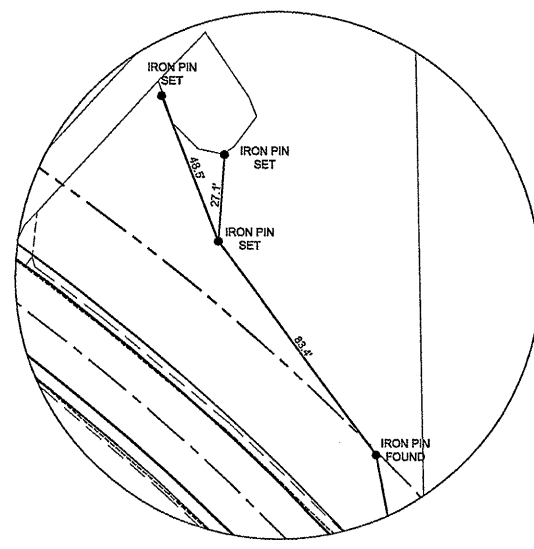
CONTROL POINT #22
DELHI ROAD
PI STA = 248+44.48



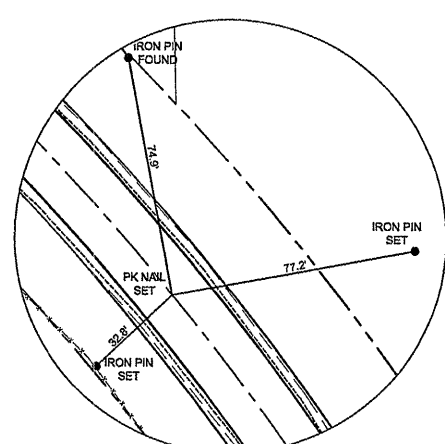
CONTROL POINT #23
DELHI ROAD
PT STA = 248+62.03



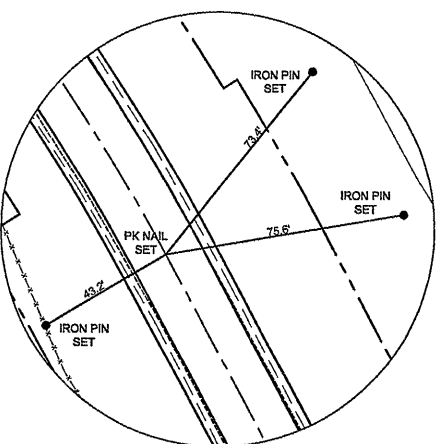
CONTROL POINT #24
DELHI ROAD
PC STA = 250+90.01



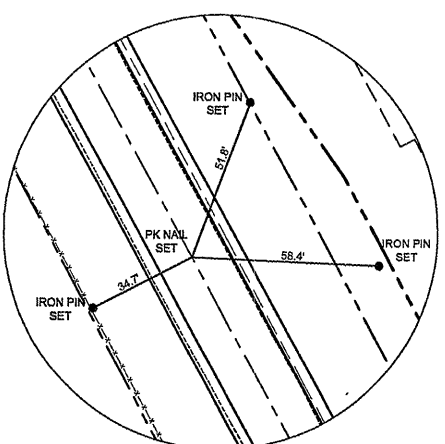
CONTROL POINT #25
DELHI ROAD
PI STA = 253+74.34



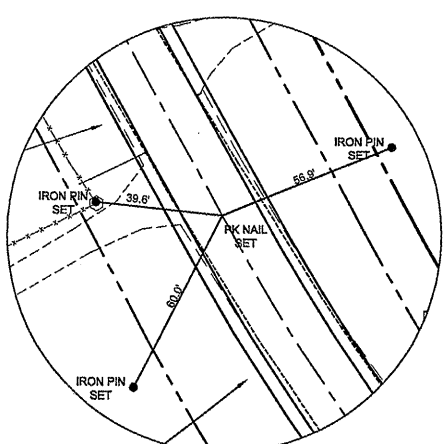
CONTROL POINT #26
DELHI ROAD
STA = 255+00



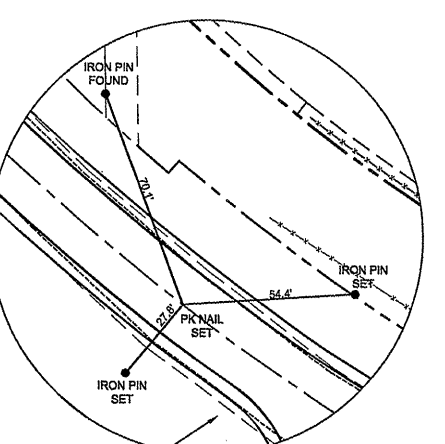
CONTROL POINT #27
DELHI ROAD
PT STA = 256+31.33



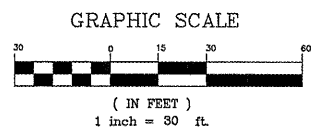
CONTROL POINT #28
DELHI ROAD
STA = 260+00



CONTROL POINT #29
DELHI ROAD
PC STA = 262+12.97



CONTROL POINT #30
DELHI ROAD
STA = 265+00



REVISIONS	DATE

ILLINOIS DEPARTMENT OF TRANSPORTATION

REFERENCE TIES

DELHI ROAD
F.A.S. ROUTE 748
SECTION 06-00053-00-RS
JERSEY COUNTY