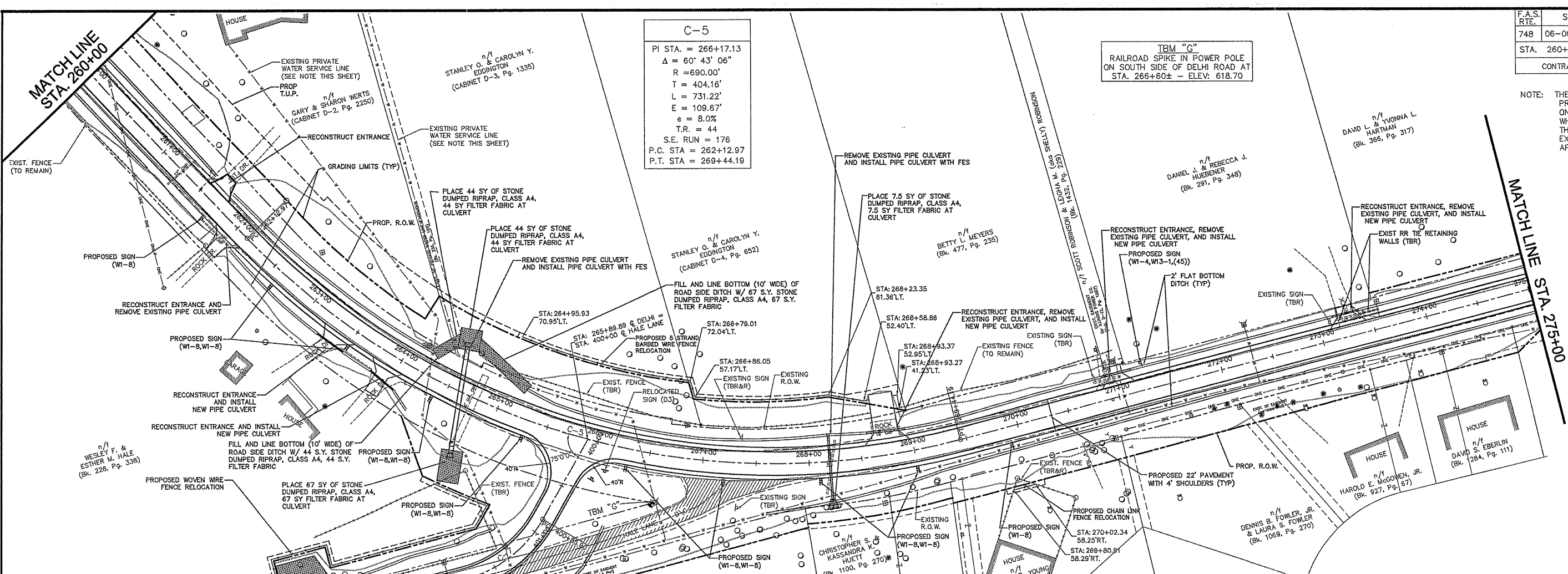


F.A.S. RTE.	SECTION	COUNTY	TOTAL SHEETS	SHEET NO.
748	06-00053-00 RS	JERSEY	110	23
STA. 260+00		TO STA. 275+00		
CONTRACT #97375		PROJECT NO. RS-0748(109)		

NOTE: THE CONTRACTOR SHALL LOCATE PRIVATE WATER SERVICE LINES ON THE NORTH SIDE OF DELHI ROAD WHERE EXCAVATION IS REQUIRED. THE LENGTH AND LOCATION OF EXPLORATORY TRENCHES SHALL BE APPROVED BY ENGINEER.



C-5
 PI STA. = 266+17.13
 $\Delta = 60' 43' 06''$
 $R = 690.00'$
 $T = 404.16'$
 $L = 731.22'$
 $E = 109.67'$
 $e = 8.0\%$
 $T.R. = 44$
 S.E. RUN = 178
 P.C. STA = 262+12.97
 P.T. STA = 269+44.19

TBM "G"
 RAILROAD SPIKE IN POWER POLE ON SOUTH SIDE OF DELHI ROAD AT STA. 266+60± - ELEV. 618.70

