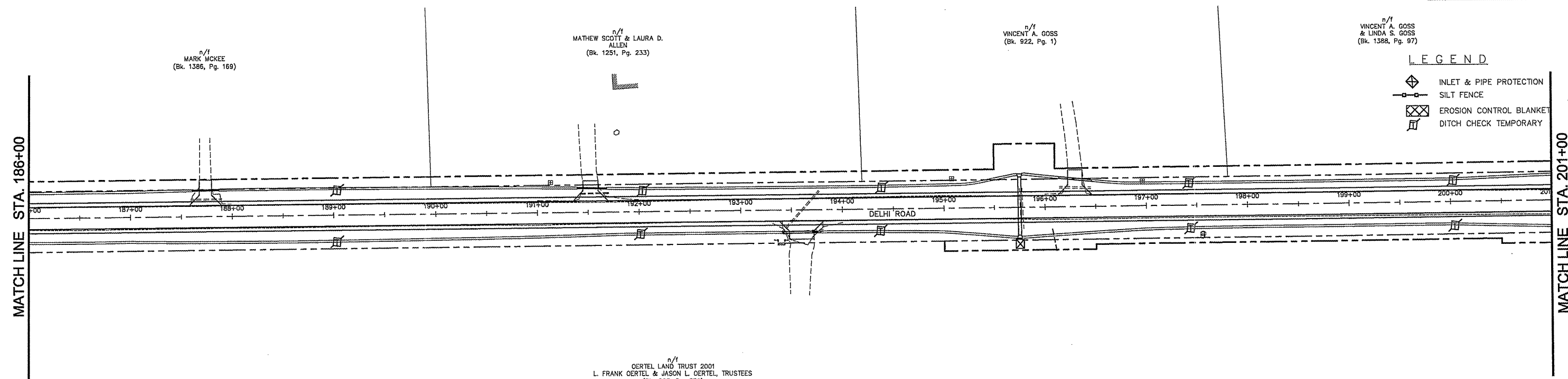
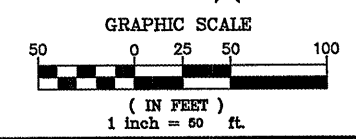
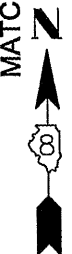


F.A.S. RTE.	SECTION	COUNTY	TOTAL SHEETS	SHEET NO.
748	06-00053-00 RS	JERSEY	110	30
STA. 186+00		TO STA. 216+00		
CONTRACT #97375		PROJECT NO. RS-0748(109)		



LEGEND

	INLET & PIPE PROTECTION
	SILT FENCE
	EROSION CONTROL BLANKET
	DITCH CHECK TEMPORARY



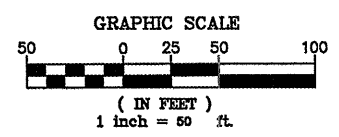
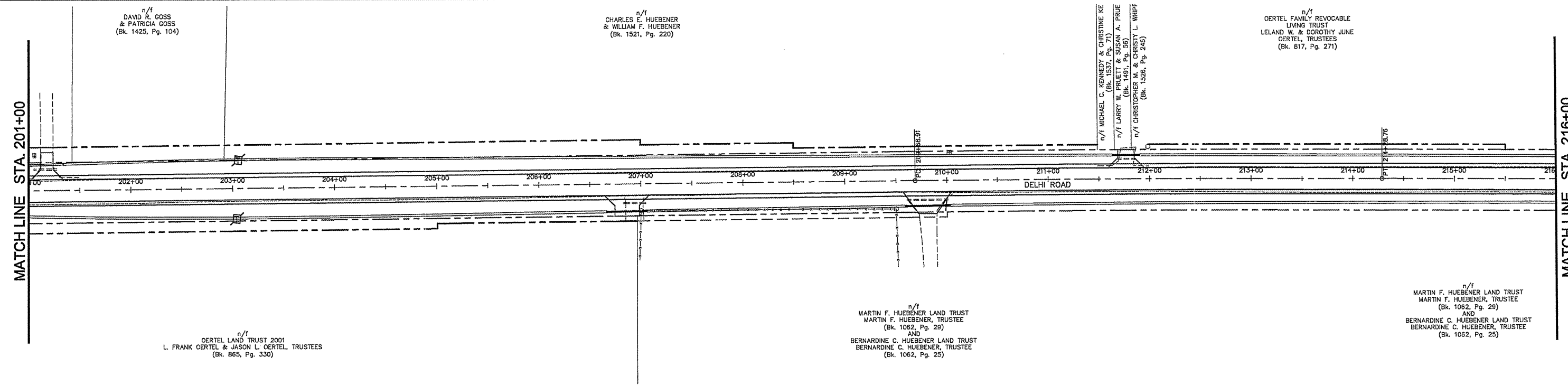
n/f MARK MCKEE (Bk. 1386, Pg. 169)

n/f MATHEW SCOTT & LAURA D. ALLEN (Bk. 1251, Pg. 233)

n/f VINCENT A. GOSS (Bk. 922, Pg. 1)

n/f VINCENT A. GOSS & LINDA S. GOSS (Bk. 1388, Pg. 97)

n/f CERTEL LAND TRUST 2001 L. FRANK CERTEL & JASON L. CERTEL, TRUSTEES (Bk. 865, Pg. 330)



REVISIONS	DATE

ILLINOIS DEPARTMENT OF TRANSPORTATION

EROSION CONTROL

DELHI ROAD
F.A.S. ROUTE 748
SECTION 06-00053-00-RS
JERSEY COUNTY

n/f DAVID R. GOSS & PATRICIA GOSS (Bk. 1425, Pg. 104)

n/f CHARLES E. HUEBENER & WILLIAM F. HUEBENER (Bk. 1521, Pg. 220)

n/f MICHAEL C. KENNEDY & CHRISTINE KE (Bk. 1537, Pg. 71)

n/f LARRY W. PRUETT & SUSAN A. PRUE (Bk. 1491, Pg. 85)

n/f CHRISTOPHER M. & CHRISTY L. WHIPP (Bk. 1326, Pg. 246)

n/f CERTEL FAMILY REVOCABLE LIVING TRUST LELAND W. & DOROTHY JUNE CERTEL, TRUSTEES (Bk. 817, Pg. 271)

n/f MARTIN F. HUEBENER LAND TRUST MARTIN F. HUEBENER, TRUSTEE (Bk. 1062, Pg. 29) AND BERNARDINE C. HUEBENER LAND TRUST BERNARDINE C. HUEBENER, TRUSTEE (Bk. 1062, Pg. 25)

n/f CERTEL LAND TRUST 2001 L. FRANK CERTEL & JASON L. CERTEL, TRUSTEES (Bk. 865, Pg. 330)

n/f MARTIN F. HUEBENER LAND TRUST MARTIN F. HUEBENER, TRUSTEE (Bk. 1062, Pg. 29) AND BERNARDINE C. HUEBENER LAND TRUST BERNARDINE C. HUEBENER, TRUSTEE (Bk. 1062, Pg. 25)