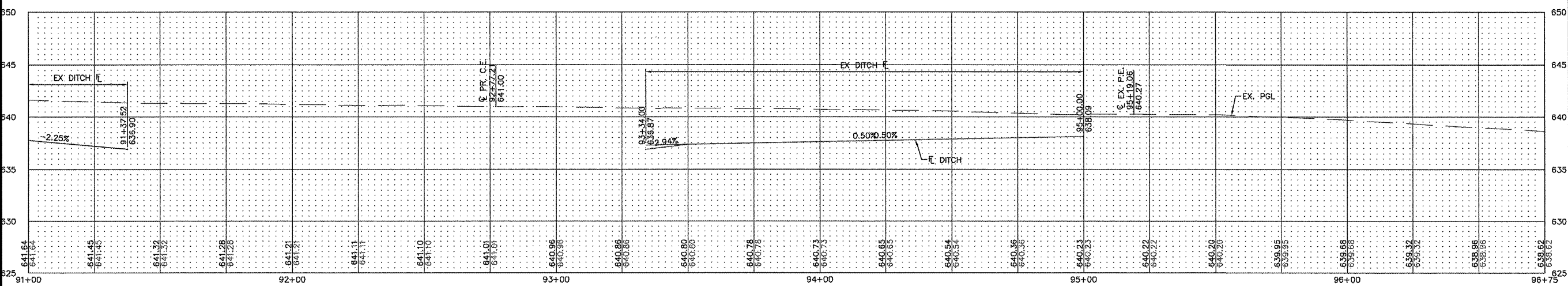
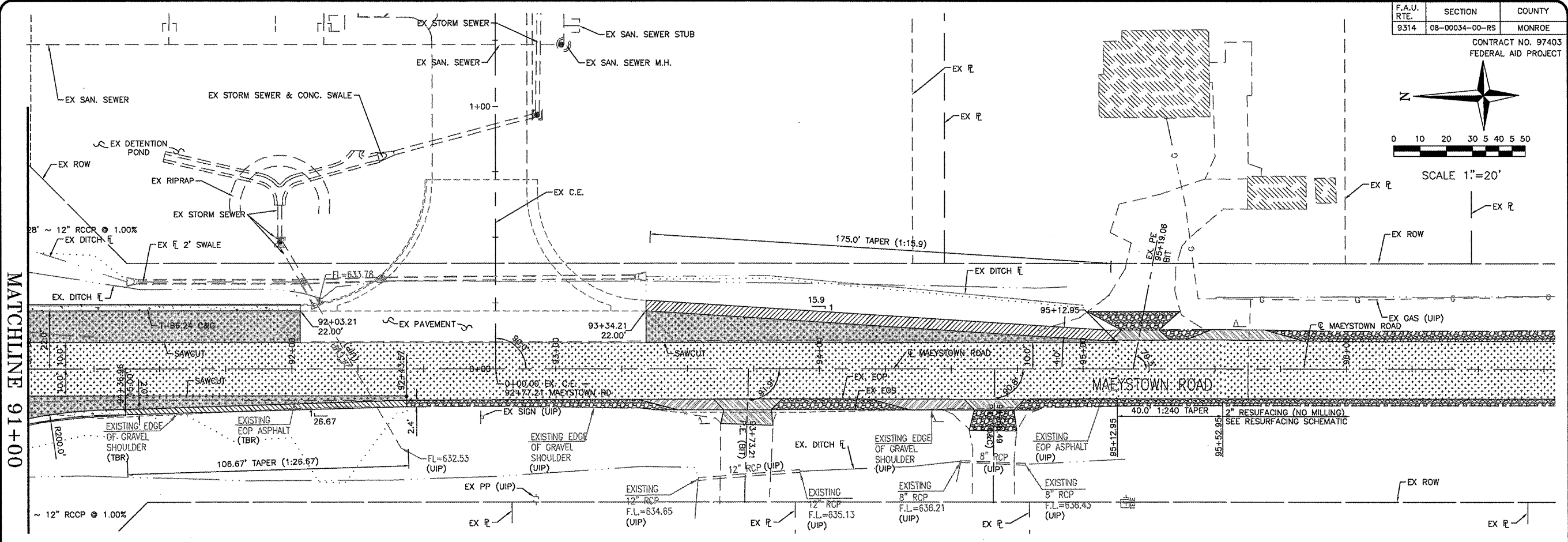
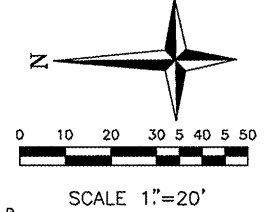


F.A.U. RTE.	SECTION	COUNTY
9314	08-00034-00-RS	MONROE
CONTRACT NO. 97403 FEDERAL AID PROJECT		

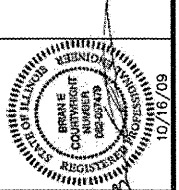
**SHEET NO.**  
**7**

Job No. 119-06-3  
Date: 10/15/09  
Scale: 1"=20'  
Drawn by: BEC  
Design by: BEC  
Approved by: CMB  
File Name: PLN



**PROPOSED LEGEND**

(UIP)	USE IN PLACE	[Pattern]	H-M-A SURFACE
(TBR)	TO BE REPLACED	[Pattern]	H-M-A WIDENING
(TBR&R)	TO BE REMOVED AND RELOCATED	[Pattern]	PCC PAVEMENT
(ATG)	ADJUST TO GRADE	[Pattern]	H-M-A SHOULDER
EOP	EDGE OF PAVEMENT	[Pattern]	AGGREGATE SHOULDER
EOS	EDGE OF SHOULDER	[Pattern]	INCIDENTAL H-M-A
ROW	RIGHT OF WAY	[Pattern]	CONSTRUCTION LIMITS
EX.	EXISTING		
PR.	PROPOSED		
TYP.	TYPICAL		
OHE	OVERHEAD ELECTRIC		
FH	FIRE HYDRANT		
MH	MANHOLE		
WV	WATER VALVE		
FM	FORCE MAIN		
UE	UNDERGROUND ELECTRIC		
SAN	SANITARY		
SHLDR	SHOULDER		
H-M-A	HOT MIX ASPHALT		
PCC	PORTLAND CEMENT CONCRETE		
CL	CENTERLINE		
FL	FLOWLINE		
PL	PROPERTY LINE		



**CBB** Crawford, Bunte, Brammeier  
Traffic and Transportation Engineers  
St. Louis, Missouri / Glen Carbon, Illinois  
314-878-6644 618-656-2612  
Fax: 314-878-5876 E-Mail: cbb@cbttraffic.com

**ROADWAY PLAN / PROFILE**  
MONROE COUNTY  
IL 156 & MAEYSTOWN ROAD  
WATERLOO, ILLINOIS

MATCHLINE 91+00