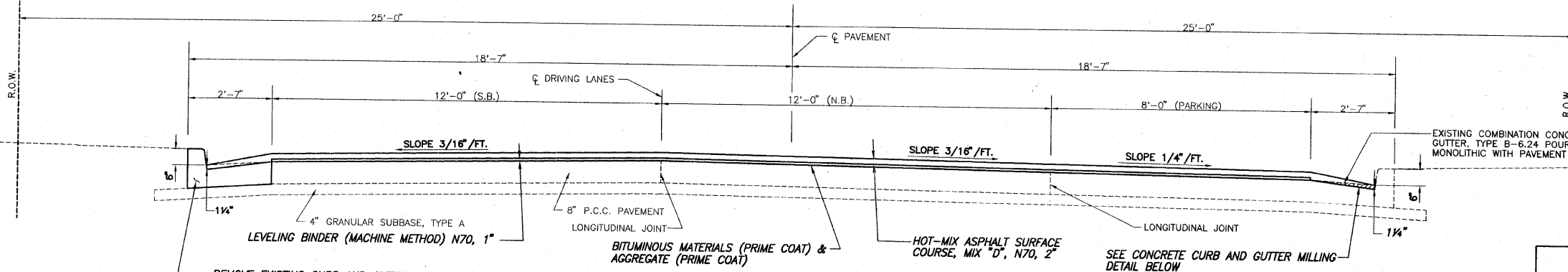


F.A.U. ROUTE	SECTION	COUNTY	TOTAL SHEETS	SHEET NUMBER
9167	09-00038-00-RS	ST. CLAIR	5	3
FEDERAL AID PROJECT		CONTRACT 97406		

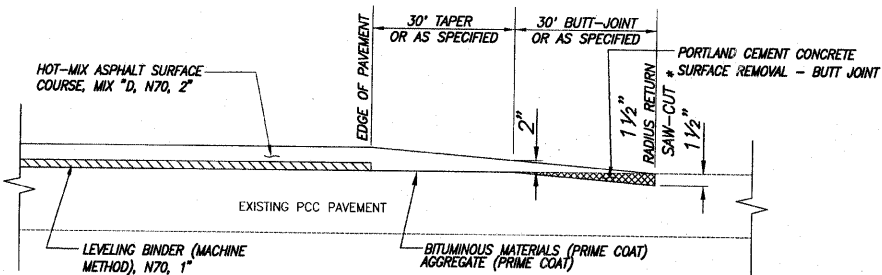


REMOVE EXISTING CURB AND GUTTER AND INSTALL COMBINATION CONCRETE CURB AND GUTTER TYPE B-6.24 (SPECIAL) AT SELECT LOCATIONS NOTED IN THE PLANS (TYP.) (SEE DETAIL BELOW)

TYPICAL SECTION
(EXISTING & PROPOSED)
N.T.S.
STATION 52+18 TO 76+30

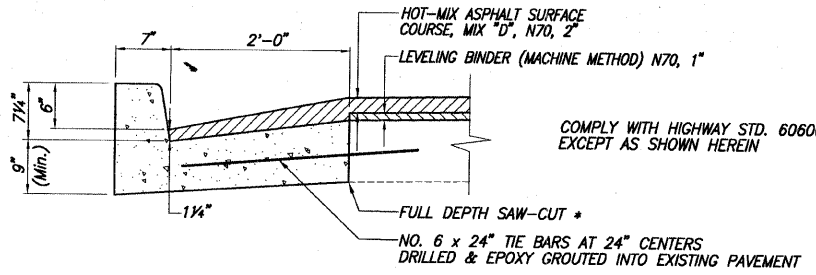
COMBINATION CONCRETE CURB & GUTTER REMOVAL & REPLACEMENT

LOCATION	CURB & GUTTER, TYPE B6.24 (FOOT)
STA. 52+18 - 12.0' LT. TO 52+48 - 12.0' LT.	30
STA. 52+18 - 20.0' RT. TO 52+48 - 20.0' RT.	30
STA. 52+54 - 21.3' RT. TO 52+66 - 29.1' RT.	14
STA. 52+60 - 12.0' LT. TO 53+04 - 12.0' LT.	44
STA. 53+10 - 28.5' RT. TO 53+30 - 20.0' RT.	14
STA. 53+10 - 12.0' LT. TO 53+54 - 12.0' LT.	44
STA. 53+60 - 12.0' LT. TO 54+04 - 12.0' LT.	44
STA. 53+60 - 20.0' RT. TO 53+90 - 20.0' RT.	30
STA. 54+09 - 12.0' LT. TO 54+19 - 12.0' LT.	10
STA. 54+34 - 20.0' RT. TO 54+49 - 20.0' RT.	15
STA. 54+96 - 12.0' LT. TO 55+06 - 12.0' LT.	10
STA. 55+08 - 12.0' LT. TO 55+50 - 12.0' LT.	42
STA. 55+08 - 20.0' RT. TO 55+63 - 20.0' RT.	55
STA. 55+56 - 12.0' LT. TO 55+70 - 12.0' LT.	14
STA. 55+72 - 12.0' LT. TO 56+02 - 12.0' LT.	30
STA. 56+08 - 12.0' LT. TO 56+52 - 12.0' LT.	44
STA. 56+08 - 20.0' RT. TO 56+52 - 20.0' RT.	44
STA. 56+58 - 12.0' LT. TO 57+02 - 12.0' LT.	44
STA. 56+87 - 20.0' RT. TO 57+02 - 20.0' RT.	15
STA. 57+08 - 12.0' LT. TO 57+52 - 12.0' LT.	44
STA. 57+08 - 20.0' RT. TO 57+52 - 20.0' RT.	44
STA. 57+58 - 12.0' LT. TO 58+02 - 12.0' LT.	44
STA. 58+08 - 12.0' LT. TO 58+52 - 12.0' LT.	44
STA. 58+31 - 20.0' RT. TO 58+52 - 20.0' RT.	21
STA. 58+57 - 12.0' LT. TO 59+01 - 12.0' LT.	44
STA. 58+57 - 20.0' RT. TO 58+87 - 20.0' RT.	30
STA. 58+99 - 20.0' RT. TO 59+11 - 20.0' RT.	12
STA. 59+08 - 12.0' LT. TO 59+52 - 12.0' LT.	44
STA. 59+52 - 12.0' LT. TO 60+01 - 12.0' LT.	44
STA. 60+06 - 12.0' LT. TO 60+50 - 12.0' LT.	44
STA. 60+56 - 12.0' LT. TO 61+00 - 12.0' LT.	44
STA. 60+56 - 20.0' RT. TO 60+66 - 20.0' RT.	10
STA. 61+06 - 12.0' LT. TO 61+50 - 12.0' LT.	44
STA. 61+06 - 20.0' RT. TO 61+27 - 20.0' RT.	21
STA. 61+56 - 12.0' LT. TO 61+99 - 12.0' LT.	44
STA. 61+56 - 20.0' RT. TO 61+99 - 20.0' RT.	44
STA. 62+05 - 12.0' LT. TO 62+49 - 12.0' LT.	44
STA. 62+55 - 12.0' LT. TO 62+85 - 12.0' LT.	30
STA. 62+55 - 20.0' RT. TO 62+85 - 20.0' RT.	30
STA. 63+28 - 12.0' LT. TO 63+49 - 12.0' LT.	21
STA. 63+28 - 20.0' RT. TO 63+49 - 20.0' RT.	21
STA. 63+54 - 12.0' LT. TO 63+98 - 12.0' LT.	44
STA. 63+90 - 20.0' RT. TO 64+00 - 20.0' RT.	10
STA. 64+01 - 22.1' RT. TO 64+19 - 28.4' RT.	18
STA. 64+04 - 12.0' LT. TO 64+48 - 12.0' LT.	44
STA. 64+54 - 12.0' LT. TO 64+98 - 12.0' LT.	44
STA. 65+14 - 28.9' RT. TO 65+23 - 22.1' RT.	12
STA. 65+03 - 12.0' LT. TO 65+47 - 12.0' LT.	44
STA. 65+53 - 12.0' LT. TO 65+97 - 12.0' LT.	44
STA. 66+04 - 12.0' LT. TO 66+48 - 12.0' LT.	44
STA. 66+53 - 12.0' LT. TO 66+97 - 12.0' LT.	44
STA. 67+03 - 12.0' LT. TO 67+47 - 12.0' LT.	44
STA. 67+53 - 12.0' LT. TO 67+97 - 12.0' LT.	44
STA. 68+03 - 12.0' LT. TO 68+47 - 12.0' LT.	44
STA. 68+13 - 12.0' LT. TO 68+97 - 12.0' LT.	44
STA. 69+03 - 12.0' LT. TO 69+47 - 12.0' LT.	44
STA. 69+53 - 12.0' LT. TO 69+97 - 12.0' LT.	44
STA. 70+03 - 12.0' LT. TO 70+96 - 12.0' LT.	93
STA. 71+02 - 12.0' LT. TO 71+46 - 12.0' LT.	44
STA. 71+52 - 12.0' LT. TO 71+96 - 12.0' LT.	44
STA. 72+02 - 12.0' LT. TO 72+10 - 12.0' LT.	8
TOTAL	2142



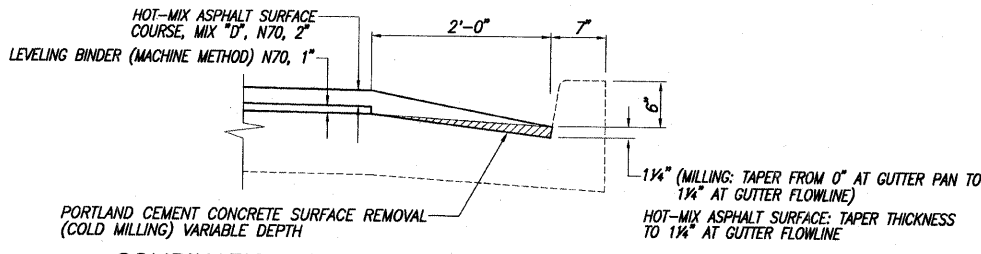
BUTT JOINT DETAIL
N.T.S.
LOCATED AT TERMINI OF PROJECT & LIBERTY RD, ST. CLAIR DR AND MECKFESSEL DR

* SAW CUT TO BE CONSIDERED INCLUDED IN THE COST OF PORTLAND CEMENT CONCRETE SURFACE REMOVAL - BUTT JOINT

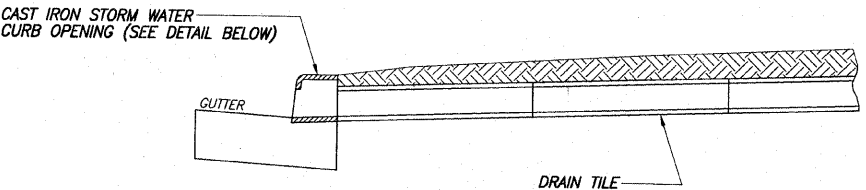


COMBINATION CONCRETE CURB & GUTTER, TYPE B-6.24 (SPECIAL)
N.T.S.

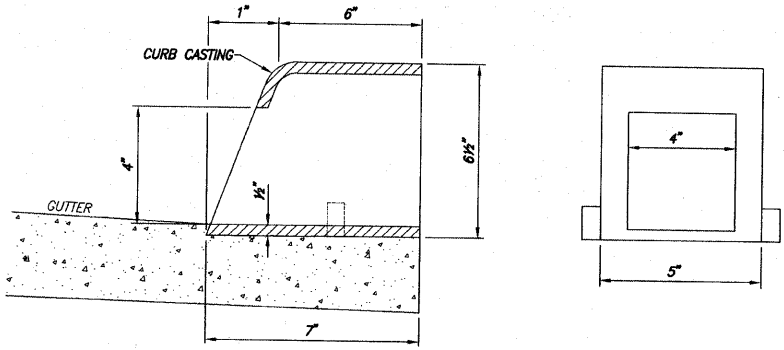
* SAW CUT TO BE CONSIDERED INCLUDED IN THE COST OF COMBINATION CONCRETE CURB & GUTTER, TYPE B-6.24 (SPECIAL)



COMBINATION CONCRETE CURB & GUTTER MILLING DETAIL
N.T.S.



ROOF DRAIN GUTTER OUTLET DETAIL
N.T.S.



PAVEMENT MARKING SCHEDULE

ITEM	SHORT TERM PVMT. MARKING	WORK ZONE PVMT. MARKING REMOVAL	THERMOPLASTIC PVMT. MK LINE 4		THERMOPLASTIC PVMT. MK LINE 6	THERMOPLASTIC PVMT. MK LINE 24
			FOOT	SQ FT	FOOT	FOOT
STA. 52+18 TO 72+20 @	360	120	---	4,004	---	---
STA. 73+02 TO 76+30 @	56	19	---	656	---	---
STA. 64+84 RT. (@ LIBERTY)	---	---	---	120	---	---
STA. 52+60 TO 53+15 RT.	---	---	---	---	95	---
STA. 64+05 TO 65+20 RT.	---	---	---	---	205	---
STA. 53+55 TO 63+60 RT.	---	---	1,021	---	---	---
STA. 65+95 TO 71+75 RT.	---	---	596	---	---	---
STA. 73+05 TO 76+30 RT.	---	---	333	---	---	---
STA. 72+20 @ - RT.	---	---	---	---	---	20
STA. 73+02 @ - LT.	---	---	---	---	---	12
TOTAL	416	139	1,950	4,780	300	32