

FOR UTILITY LOCATION PURPOSES, THIS PROJECT IS LOCATED IN THE N.W. QUARTER OF SECTION 34, TOWNSHIP 6 NORTH, RANGE 9 WEST OF THE THIRD PRINCIPAL MERIDIAN.

UTILITY INFORMATION CAN BE OBTAINED BY CALLING J.U.L.I.E. AT (800) 892-0123

THE FOLLOWING UTILITY COMPANIES HAVE FACILITIES WITHIN THE LIMITS OF THIS PROJECT:

ILLINOIS AMERICAN WATER CO. 4436 INDUSTRIAL DRIVE ALTON, ILLINOIS 62002 (618) 644-9429	AMERITECH 203 GOETHE COLLINSVILLE, ILLINOIS 62234 (618) 346-6400
AMEREN UE 700 OAKWOOD AVENUE ALTON, ILLINOIS 62002 (618) 463-4051 (ELECTRIC) (618) 463-4043 (GAS)	ALTON PUBLIC WORKS 2 EMMA KAUS LANE ALTON, ILLINOIS 62002 (618) 466-3133
CHARTER COMMUNICATIONS 508 NIAGARA AVENUE EAST ALTON, ILLINOIS 62024 (618) 251-2660	FOSTERBURG WATER DISTRICT 3216 MAIN STREET ALTON, ILLINOIS 62002 (618) 259-0935

STATE OF ILLINOIS DEPARTMENT OF TRANSPORTATION DIVISION OF HIGHWAYS FEDERAL AID HIGHWAY ARRA PROGRAM

FOSTERBURG ROAD IMPROVEMENTS SECTION 09-00218-05-RS FAU ROUTE 9002 (FOSTERBURG ROAD) PROJECT ARA-5011 (269) ALTON, ILLINOIS MADISON COUNTY JOB C-98-339-09

SECTION	COUNTY	TOTAL SHEETS	SHEET NO.
*	MADISON	8	1

FEDERAL AID PROJECT
* 09-00218-05-RS
CONTRACT NO. 97407

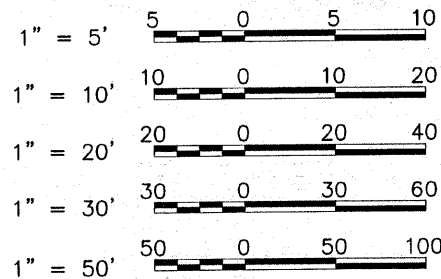
INDEX TO SHEETS

1. COVER SHEET
2. GENERAL NOTES, LEGEND, PATCHING SCHEDULE, AND SUMMARY OF QUANTITIES
3. TYPICAL SECTIONS AND CONSTRUCTION DETAILS
- 4.-6. PLAN AND PROFILE SHEETS
7. PAVEMENT MARKING
8. CULVERT HEADWALL DETAILS

HIGHWAY STANDARDS

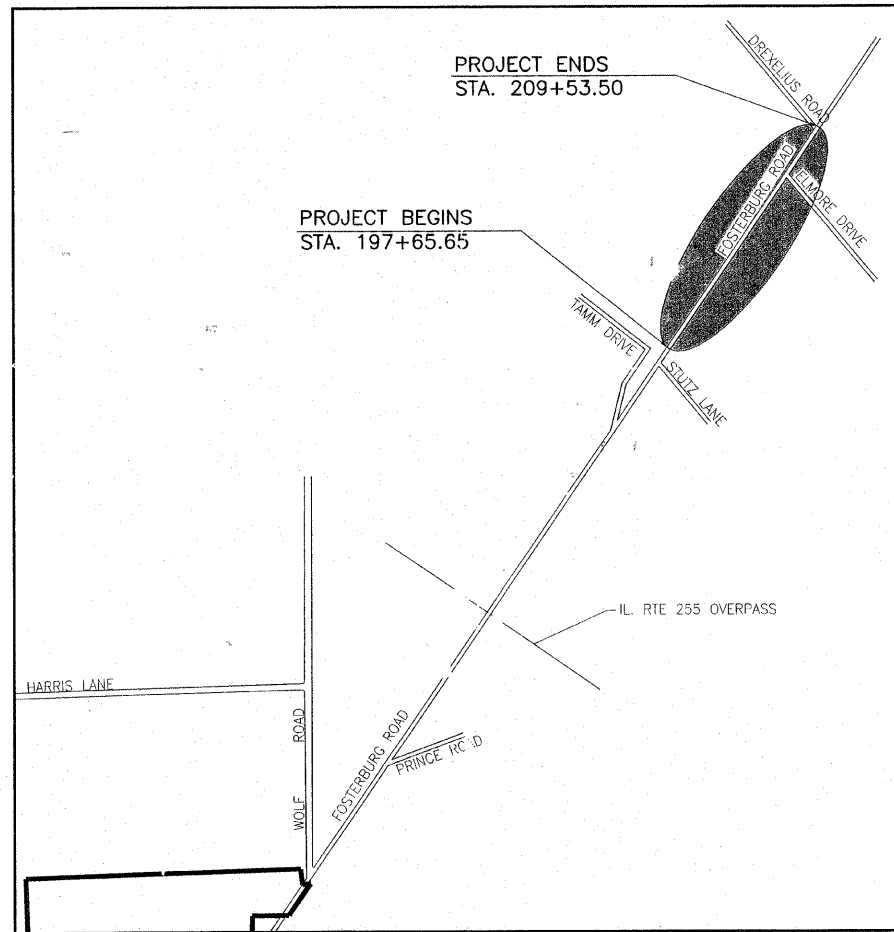
280001-05	701006-03
442201-03	701011-02
482011-03	701201-03
601001-03	701301-03
601101-01	701306-02
630001-08	701311-03
631011-06	701336-05
635006-03	701901-01
635011-02	780001-02
701001-02	781001-03

SCALES



FULL SIZE PLANS HAVE BEEN PREPARED USING STANDARD ENGINEERING SCALES. REDUCED SIZED PLANS WILL NOT CONFORM TO STANDARD SCALES. IN MAKING MEASUREMENTS ON REDUCED PLANS THE ABOVE SCALES MAY BE USED.

2010 ADT = 8,600
 % TRUCKS = 8%
 FUNCTIONAL CLASSIFICATION: URBAN MINOR ARTERIAL
 DESIGN SPEED = 45 M.P.H.



LOCATION MAP

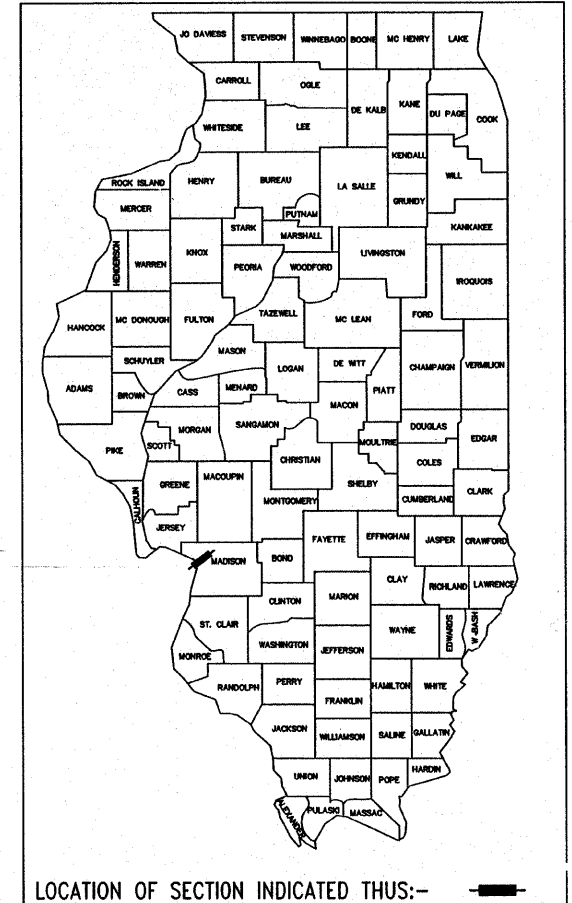
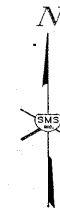


LENGTH OF PROJECT = 1,187.85 FEET = 0.225 MILES



Sheppard Morgan & Schwaab, Inc.
 CONSULTING ENGINEERS & LAND SURVEYORS
 215 Market Street
 Alton, Illinois 62002
 P.O. Box E
 618/462-9755

10 Central Industrial Dr
 Northgate Center
 Granite City, IL 62040
 618/877-8700



APPROVED	<i>DET 13th</i>	2009
	<i>[Signature]</i>	LOCAL AGENCY REPRESENTATIVE
PASSED	<i>October 20</i>	2009
	<i>[Signature]</i>	DISTRICT 8 ENGINEER OF LOCAL ROADS & STREETS
APPROVED	<i>October 20</i>	2009
	<i>Mary C. Lamie</i>	MARY C. LAMIE, P.E. DEPUTY DIRECTOR OF HIGHWAYS REGION FIVE ENGINEER
STATE OF ILLINOIS DEPARTMENT OF TRANSPORTATION		



Larry D. Anderson

DATE SIGNED *10/12/09*
 EXPIRATION DATE *11/30/11*

PATCHING SCHEDULE

LOCATION STATION	LENGTH FT.	WIDTH FT.	TYPE II SQ. YD.
198+61 RT.	12	10	13.3
198+61 LT.	12	10	13.3
200+09 RT.	6	10	6.7
200+09 LT.	6	10	6.7
200+55 RT.	6	10	6.7
200+55 LT.	6	10	6.7
201+07 RT.	6	10	6.7
201+07 LT.	6	10	6.7
203+50 RT.	6	10	6.7
203+50 LT.	6	10	6.7
204+01 RT.	6	10	6.7
204+14 LT.	6	10	6.7
204+51 RT.	6	10	6.7
204+51 LT.	6	10	6.7
207+49 RT.	6	10	6.7
207+49 LT.	6	10	6.7
207+98 RT.	6	10	6.7
207+98 LT.	6	10	6.7
208+48 RT.	6	10	6.7
208+48 LT.	6	10	6.7
208+97 RT.	6	10	6.7
208+97 LT.	6	10	6.7
TOTALS			160.6

SUMMARY OF QUANTITIES

CODE NO.	CONSTRUCTION TYPE CODE ITEM	ROADWAY 100% FED. ARA	
		UNIT	TOTAL QUANTITY
X0322879	GRADING AND SHAPING FORESLOPES	SQ YD	319
X0325305	STRUCTURAL REPAIR OF CONCRETE (DEPTH EQUAL TO OR LESS THAN 5 INCHES)	SQ FT	3
X4424000	SAW CUTS (WIDENING)	FOOT	2,376
20100500	TREE REMOVAL, ACRES	ACRE	0.02
20200700	EXCAVATING AND GRADING EXISTING SHOULDER, SPECIAL	UNIT	11
20400805	FURNISHED EXCAVATION, SPECIAL	CU YD	40
20700400	POROUS GRANULAR EMBANKMENT, SPECIAL	CU YD	11
28000400	PERIMETER EROSION BARRIER	FOOT	115
28100207	STONE RIPRAP, CLASS A4	TON	213
28200200	FILTER FABRIC	SQ YD	319
35100700	AGGREGATE BASE COURSE, TYPE A 8"	SQ YD	195
35650700	BASE COURSE WIDENING	SQ YD	264
40600100	BITUMINOUS MATERIALS (PRIME COAT)	GALLON	337
40600300	AGGREGATE (PRIME COAT)	TON	6
40600535	LEVELING BINDER (HAND METHOD), N70	TON	1
40600982	HOT-MIX ASPHALT SURFACE REMOVAL- BUTT JOINT	SQ YD	152
40600990	TEMPORARY RAMP	SQ YD	25
40603085	HOT-MIX ASPHALT BINDER COURSE, IL-19.0, N70	TON	404
40603340	HOT-MIX ASPHALT SURFACE COURSE, MIX "D", N70	TON	290
40800050	INCIDENTAL HOT-MIX ASPHALT SURFACING	TON	39
44000400	GUTTER REMOVAL	FOOT	2,376
44201803	CLASS D PATCHES, TYPE II, 13 INCH	SQ YD	161
44300200	STRIP REFLECTIVE CRACK CONTROL TREATMENT	FOOT	2,376
48102100	AGGREGATE WEDGE SHOULDER, TYPE B	TON	47
48203029	HOT-MIX ASPHALT SHOULDERS, 8"	SQ YD	825
50102400	CONCRETE REMOVAL	CU YD	8.8
50200100	STRUCTURE EXCAVATION	CU YD	21
50800205	REINFORCEMENT BARS, EPOXY COATED	POUND	1,650
54003000	CONCRETE BOX CULVERTS	CU YD	15.5
59100100	GEOCOMPOSITE WALL DRAIN	SQ YD	9
60100060	CONCRETE HEADWALL FOR PIPE DRAINS	EACH	2
60107600	PIPE UNDERDRAINS 4"	FOOT	2,376
60108100	PIPE UNDERDRAINS 4" (SPECIAL)	FOOT	50
63000003	STEEL PLATE BEAM GUARD RAIL, TYPE A, 9 FOOT POSTS	FOOT	225
63100167	Traffic Barrier Terminal, Type 1 (Special) Tangent	EACH	1
63300725	STEEL PLATE BEAM GUARDRAIL (SHORT RADIUS)	FOOT	87.5
67100100	MOBILIZATION	L SUM	1
70101700	TRAFFIC CONTROL AND PROTECTION	L SUM	1
70300100	SHORT-TERM PAVEMENT MARKING	FOOT	440
70300220	TEMPORARY PAVEMENT MARKING - LINE 4"	FOOT	3,994
703010GJ	WORK ZONE PAVEMENT MARKING REMOVAL	SQ FT	40
78000200	THERMOPLASTIC PAVEMENT MARKING - LINE 4"	FOOT	3,994
78100100	RAISED REFLECTIVE PAVEMENT MARKER	EACH	15
78200410	GUARDRAIL MARKERS, TYPE A	EACH	5
78201000	TERMINAL MARKER-DIRECT APPLIED	EACH	1
78300200	RAISED REFLECTIVE PAVEMENT MARKER REMOVAL	EACH	13

* SPECIALITY ITEM

GENERAL LEGEND

	CENTERLINE OF PROPOSED IMPROVEMENT		EXISTING INLET
	EXISTING RIGHT-OF-WAY LINE		EXISTING PIPE CULVERT
	PROPOSED RIGHT-OF-WAY LINE		EXISTING SANITARY SEWER
	TEMPORARY CONSTRUCTION EASEMENT		EXISTING STORM SEWER
	PROPERTY LINE		EXISTING WATER LINE
	SECTION LINE		EXISTING GAS LINE
	1/2 SECTION LINE		EXISTING TELEPHONE LINE
	IRON PIPE FOUND		EXISTING FIBER OPTIC CABLE
	IRON PIPE SET		EXISTING ELECTRIC CABLE
	MONUMENT FOUND		EXISTING PIPE LINE
	PROPOSED R.O.W. MONUMENT		SURFACE TO BE REMOVED
	FENCE		18" TREE
	EDGE OF EXISTING FEATURES		SOIL BORING LOCATION
	CONSTRUCTION LIMITS		PROPOSED DITCH
	UTILITY POLE		PROPOSED MANHOLE
	UTILITY POLE W/ DOWN GUY		PROPOSED INLET
	LIGHT POLE		PROPOSED STORM SEWER
	GAS METER		PROPOSED END SECTION
	WATER METER		PROPOSED RIP RAP
	FIRE HYDRANT		SETTLEMENT PLATFORM
	WATER OR GAS VALVE		INCLINOMETER
	TELEPHONE PEDESTAL		PIEZOMETER
	EXISTING SIGN		EXISTING SPOT ELEVATION
	PROPOSED SIGN		PROPOSED SPOT ELEVATION
	MAIL BOX		PROPOSED DEPRESSED CURB
	EXISTING MANHOLE		PROPOSED INCIDENTAL BITUMINOUS SURFACING
	CONTROL POINT		

ABBREVIATIONS

T.C.	-	TOP OF CURB
E.P.	-	EDGE OF PAVEMENT
F.L.	-	FLOW LINE
RDMH	-	RESTRICTED DEPTH MANHOLE
PRCF	-	PRECAST REINFORCED CONCRETE FLARED
F. & G.	-	FRAME AND GRATE
O.L.	-	OPEN LID
C.L.	-	CLOSED LID
SS1	-	STORM SEWER TYPE 1
SS1WMQ	-	STORM SEWER TYPE 1, WATER MAIN QUALITY PIPE
PC1	-	PIPE CULVERT TYPE 1
T.B.	-	TRENCH BACKFILL
C.L.S.M.	-	CONTROLLED LOW-STRENGTH MATERIAL
CUT	-	EARTH EXCAVATION QUANTITY SHOWN ON CROSS SECTIONS
FILL	-	EMBANKMENT QUANTITY SHOWN ON CROSS SECTIONS

SURVEY CONTROL POINTS

VERTICAL CONTROL				
CONTROL POINT	LOCATION	ELEVATION	DESCRIPTION	
BM #144	STA. 205+73.81, 36.07' LT.	527.49	R.R. SPIKE IN P.P.	
BM #1	STA. 203+30.01, 42.55' RT.	521.50	R.R. SPIKE IN P.P.	
HORIZONTAL CONTROL				
CONTROL POINT	NORTHING	EASTING	ELEVATION	DESCRIPTION
CP #1000	826,115.487	2,317,129.516	529.97 *	REBAR ±22.5' EAST OF CL FOSTERBURG ROAD & ±44' N. CL STUTZ LANE
CP #1001	826,518.030	2,317,491.297	520.57 *	REBAR ±30' E. OF CL FOSTERBURG RD. & 35' N. OF E. END OF BOX CUL.
CP #1002	826,976.172	2,317,878.165	532.00 *	REBAR ±18' EAST OF CL FOSTERBURG RD. & ±175' N. ELMORE DRIVE

* ELEVATIONS SHOULD BE CHECKED FROM A BENCHMARK

SIDE ROAD AND ENTRANCE SCHEDULE

APPROX. LOCATION (STATION)	TYPE	*WIDTH (FOOT)	INCIDENTAL HOT-MIX ASPHALT SURFACING (TON)	AGGREGATE BASE COURSE, TYPE A 8" (SQ. YD.)
RT. 200+50	P.E.	30	2.6	
LT. 200+62	P.E.	41	3.1	
RT. 202+64	C.E.	88	7.3	
LT. 204+31	P.E.	20	2.2	
RT. 206+51	SIDEROAD (ELMORE DRIVE)	27	7.7	69
LT. 206+59	P.E.	14	1.8	
LT. 209+67	SIDEROAD (DREXELIUS RD.)	23	14.1	126
TOTALS			38.8	195

* WIDTH SHOWN IS AT THE END OF THE 6' FEATHER EDGE

COMMITMENTS

NONE

MIX DESIGNS

MIXTURE USE AC/PG RAP% (MAX.) DESIGN AIR VOIDS MIX COMPOSITION FRICTION AGG. SURFACE PG 64-22 10% 4.0% @ NDES=70 --- MIX D

MIXTURE USE AC/PG RAP% (MAX.) DESIGN AIR VOIDS MIX COMPOSITION FRICTION AGG. BINDER PG 64-22 10% 4.0% @ NDES=70 IL-19 MIX C

MIXTURE USE AC/PG RAP% (MAX.) DESIGN AIR VOIDS MIX COMPOSITION FRICTION AGG. PATCHING PG 64-22 15% 4.0% @ NDES=70 IL-19.0 ---

MIXTURE USE AC/PG RAP% (MAX.) DESIGN AIR VOIDS MIX COMPOS. ON FRICTION AGG. SHOULDER PG 58-22 40% 2.0% @ NDES=70 --- BAM

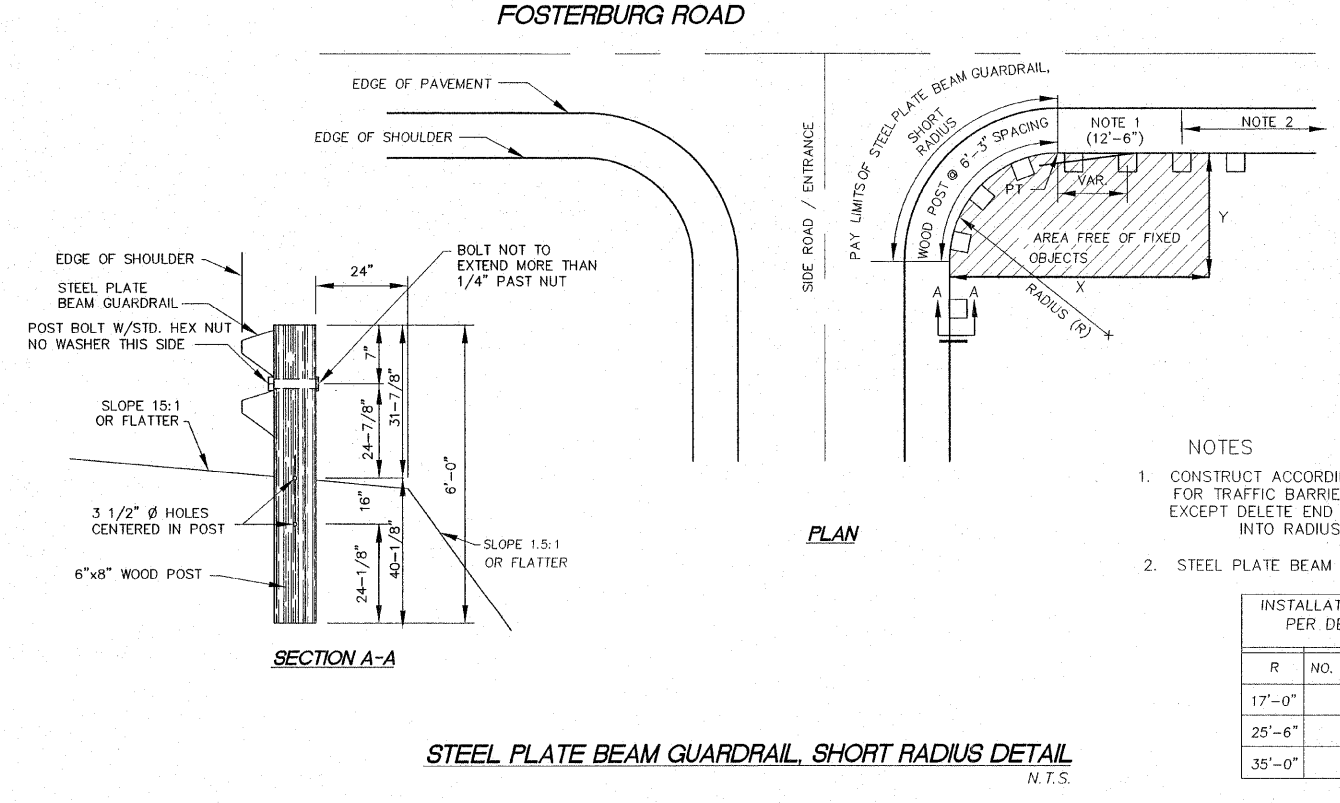
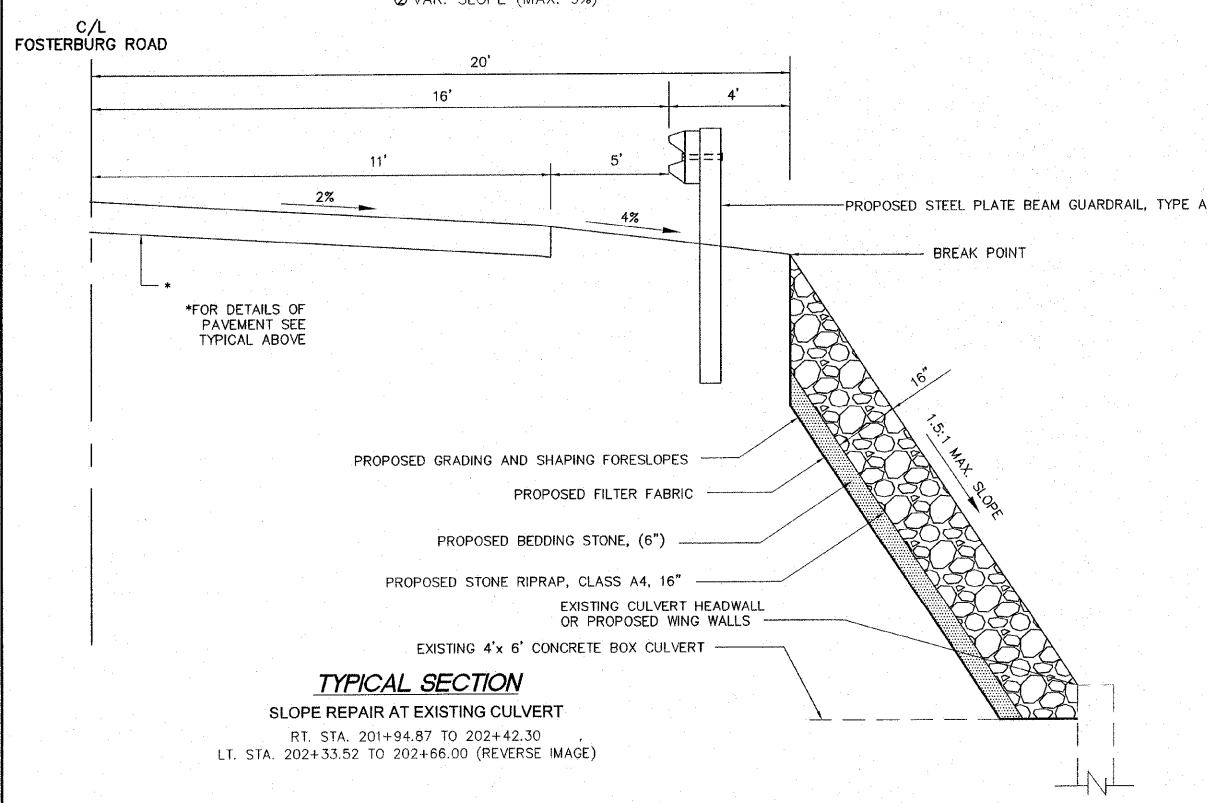
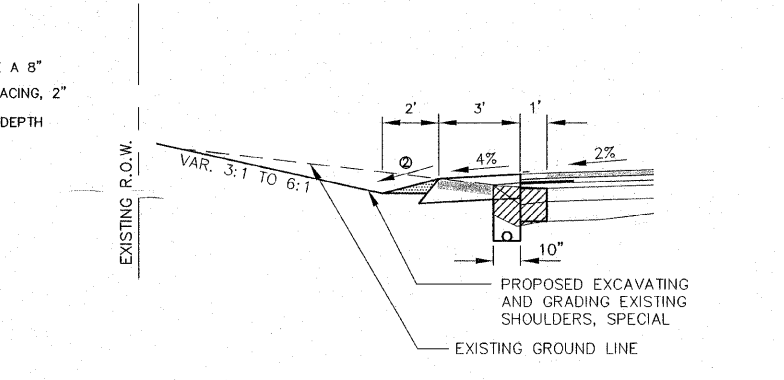
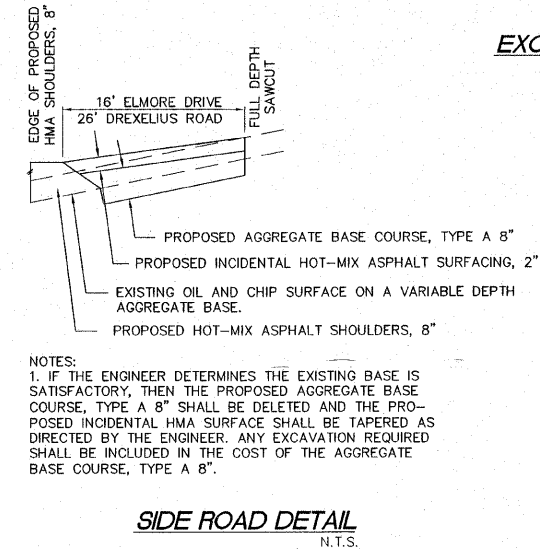
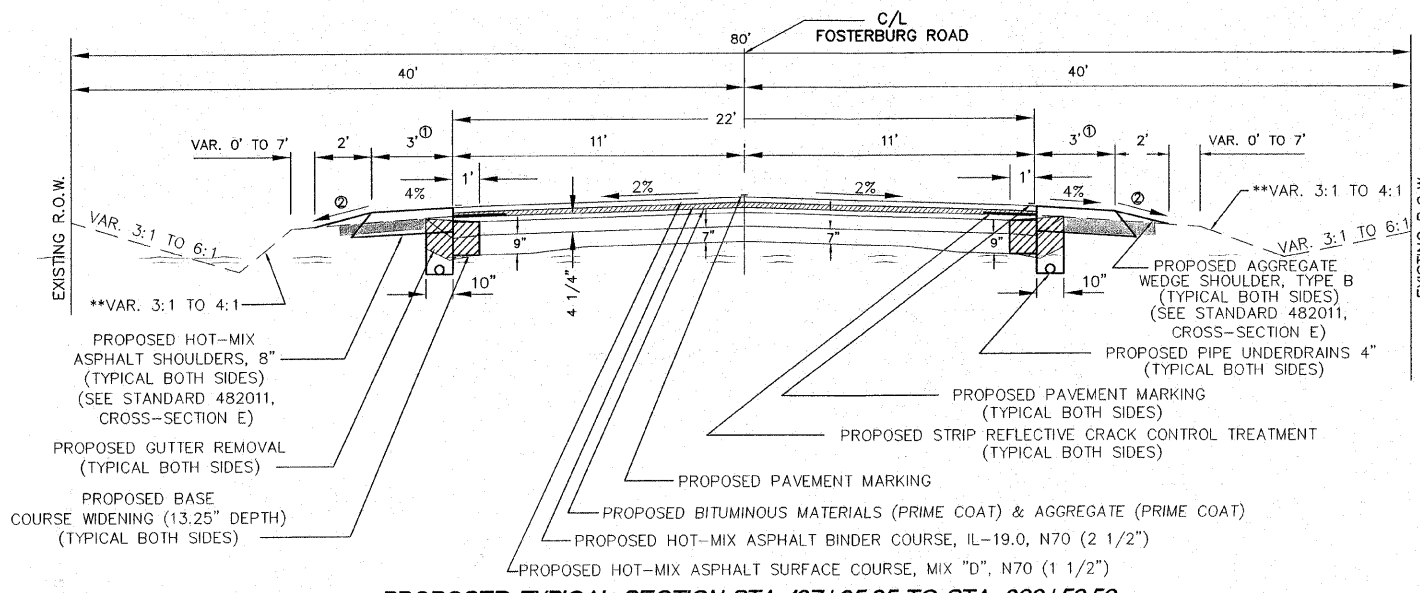
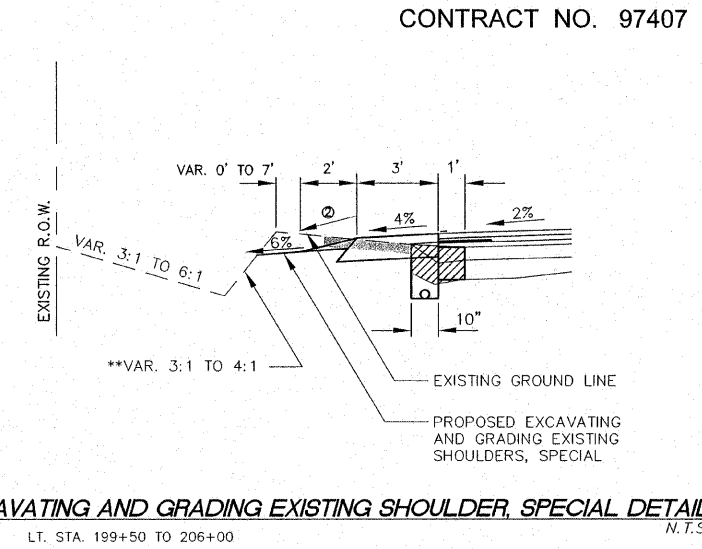
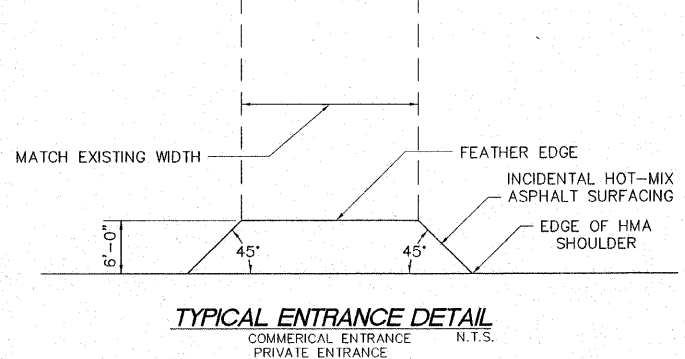
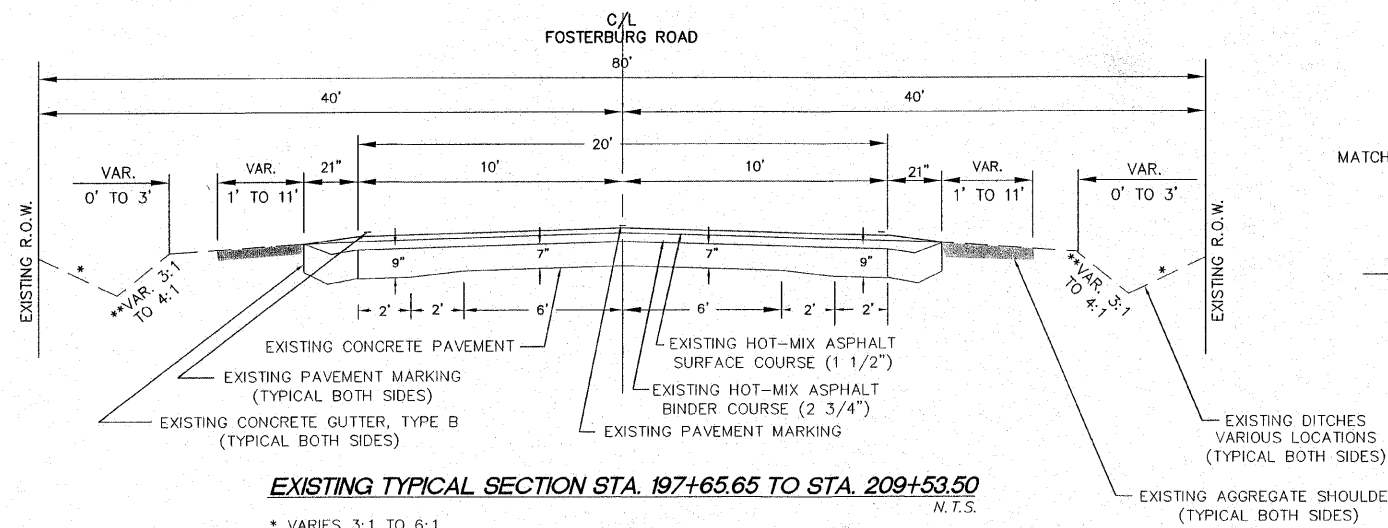
GENERAL NOTES

- THIS PROJECT SHALL BE CONSTRUCTED ACCORDING TO THE "STANDARD SPECIFICATIONS FOR ROAD AND BRIDGE CONSTRUCTION" ADOPTED JANUARY 1, 2007 AND THE SPECIAL PROVISIONS OF THE PROJECT CONTRACT.
- INFORMATION ON THE PLANS REGARDING UTILITIES IS TAKEN FROM THE BEST AVAILABLE RECORDS, BUT IS NOT REPRESENTED AS BEING CORRECT OR COMPLETE. THE CONTRACTOR SHALL NOTIFY J.U.L.I.E. IN ADVANCE OF CROSSING OVER OR UNDER UTILITIES.
- THE CONTRACTOR SHALL USE ALL DUE PRECAUTION NOT TO DAMAGE OR DISTURB UTILITIES. THE ENTIRE COST OF MAKING REPAIRS TO, OR REPLACEMENT OF, ANY DAMAGED LINE WILL BE THE FULL RESPONSIBILITY OF THE CONTRACTOR.
- ALL ELEVATIONS REFER TO NATIONAL GEODETIC SURVEY (N.G.S.) DATUM.
- THE CONTRACTOR, AT HIS EXPENSE, SHALL DISPOSE OF ALL EXCESS MATERIALS FROM EXCAVATION AND REMOVAL ITEMS ACCORDING TO SECTION 202 OF THE STANDARD SPECIFICATIONS.
- PLAN QUANTITIES FOR HOT-MIX ASPHALT ITEMS WERE CALCULATED BASED ON USING 112 LBS. / SQ. YD. / IN.

REVISIONS

SMS ENGINEERS
 Sheppard, Morgan & Schwaab, Inc.
 CONSULTING ENGINEERS AND LAND SURVEYORS
 215 Market Street, P.O. Box E, Alton, IL 62002-8194
 618-462-3755 • Email: mail@smsengineers.com
 1st Central Industrial Drive, Granite City, IL 62040-6188
 618-877-5700 • Email: mail@smsengineers.com

ALTON, ILLINOIS - FOSTERBURG ROAD IMPROVEMENTS
 FAU ROUTE 9002
 SECTION 09-00218-0b-RS
 GENERAL NOTES, LEGEND, PATCHING SCHEDULE, AND SUMMARY OF QUANTITIES



INSTALLATION CHARACTERISTICS PER DESIGN RADIUS (R)			
R	NO. OF WOOD POST	X	Y
17'-0"	6	30'	15'
25'-6"	8	40'	20'
35'-0"	11	50'	20'

REVISIONS

SMS ENGINEERS
Sheppard, Morgan & Schwaab, Inc.
CONSULTING ENGINEERS AND LAND SURVEYORS
215 Market Street, P.O. Box E, Alton, IL 62002 • 618/462-9755 • Email: ms@smsengineers.com
10 Central Industrial Drive, Suite 3, Granite City, IL 62040 • 618/877-4790 • Email: ms@smsengineers.com

ALTON, ILLINOIS - FOSTERBURG ROAD IMPROVEMENTS
FAU ROUTE 9002
SECTION 09-00218-05-RS
TYPICAL SECTIONS AND CONSTRUCTION DETAILS

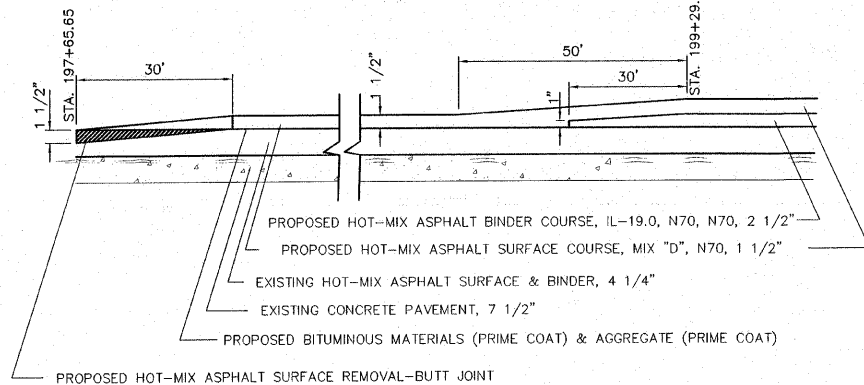
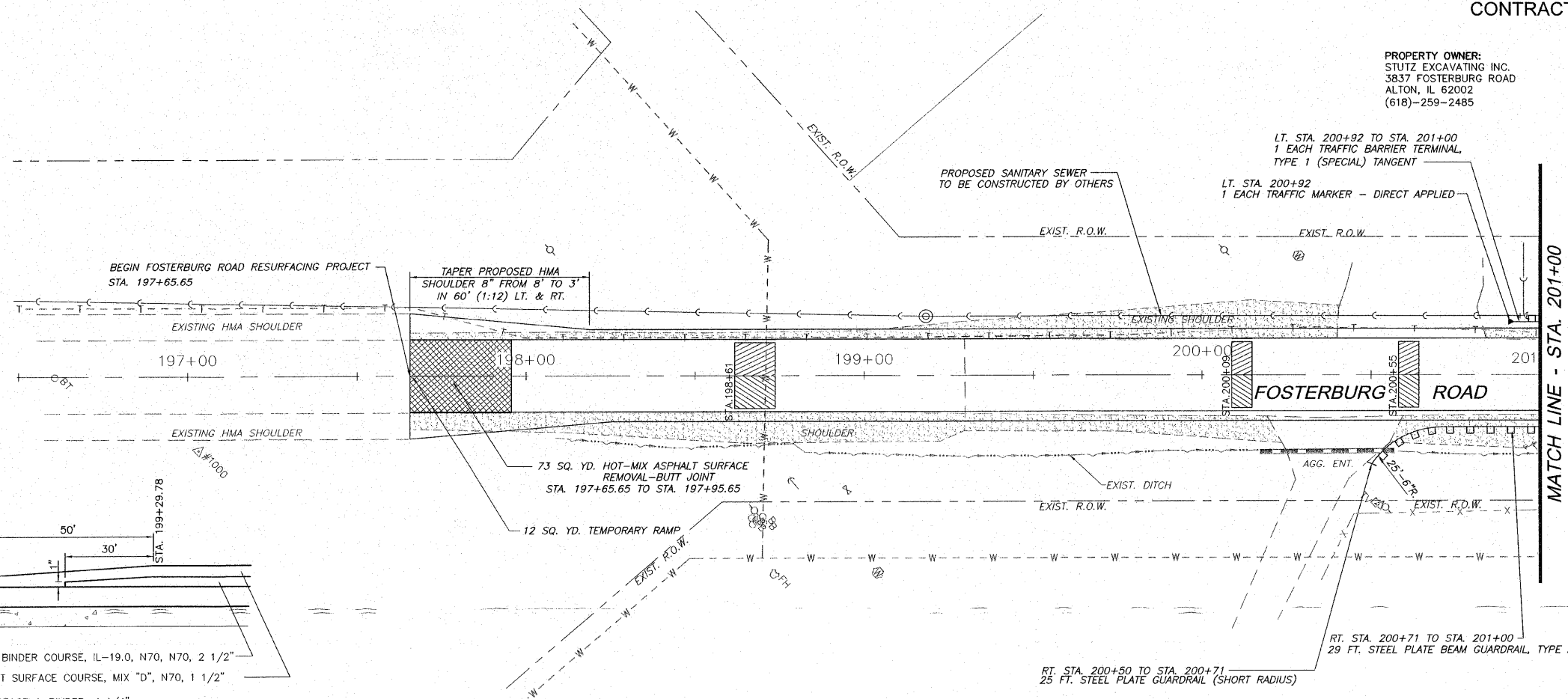
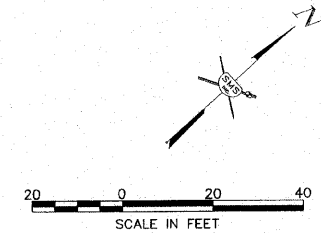
Typical Sections.dwg
REF. BK. PG.
JOB NO. 207632.1
DSN. BY: LDA
DWN. BY: CAD
CHK. BY: LDA
DATE: OCTOBER, 2009
SCALE: NONE
SHEET 3 OF 8

PROPERTY OWNER:
STUTZ EXCAVATING INC.
3837 FOSTERBURG ROAD
ALTON, IL 62002
(618)-259-2485

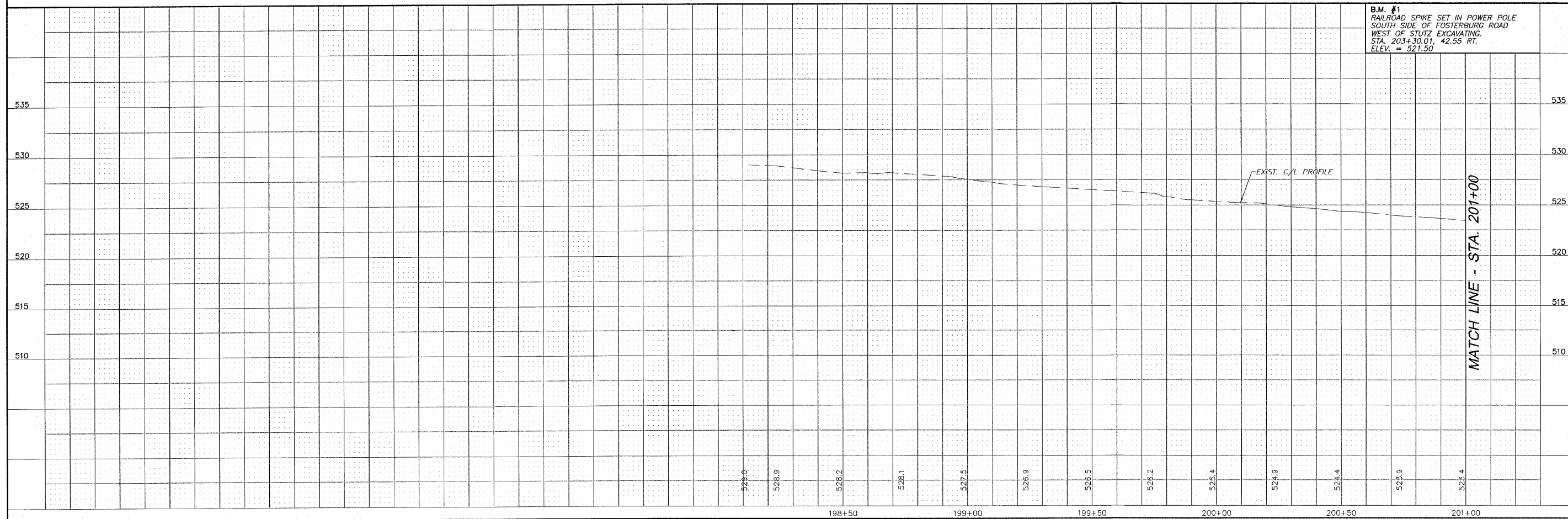
LT. STA. 200+92 TO STA. 201+00
1 EACH TRAFFIC BARRIER TERMINAL,
TYPE 1 (SPECIAL) TANGENT
LT. STA. 200+92
1 EACH TRAFFIC MARKER - DIRECT APPLIED

RT. STA. 200+71 TO STA. 201+00
29 FT. STEEL PLATE BEAM GUARDRAIL, TYPE A

PROPERTY OWNER:
JOHN H. STUTZ
7666 STUTZ
ALTON, IL 62002
(618)-259-1172



BUTT JOINT AND TRANSITION DETAIL
TO BE USED: STA. 197+65.65 TO 199+29.78

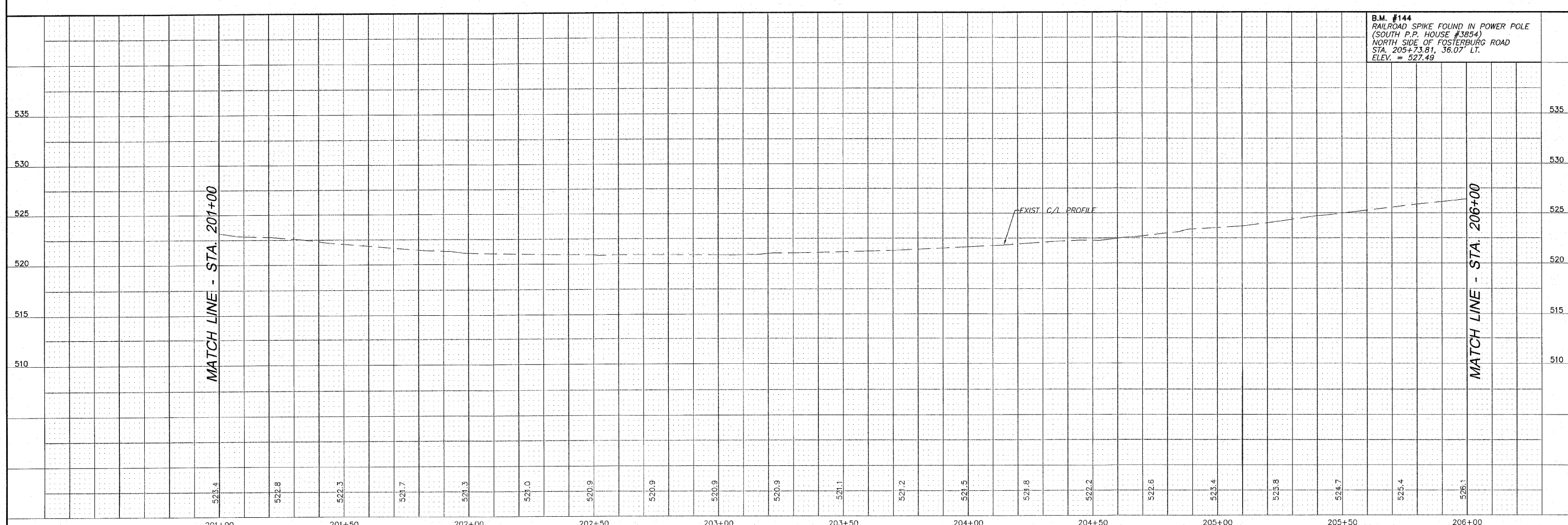
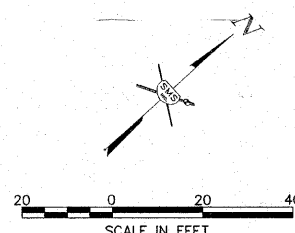
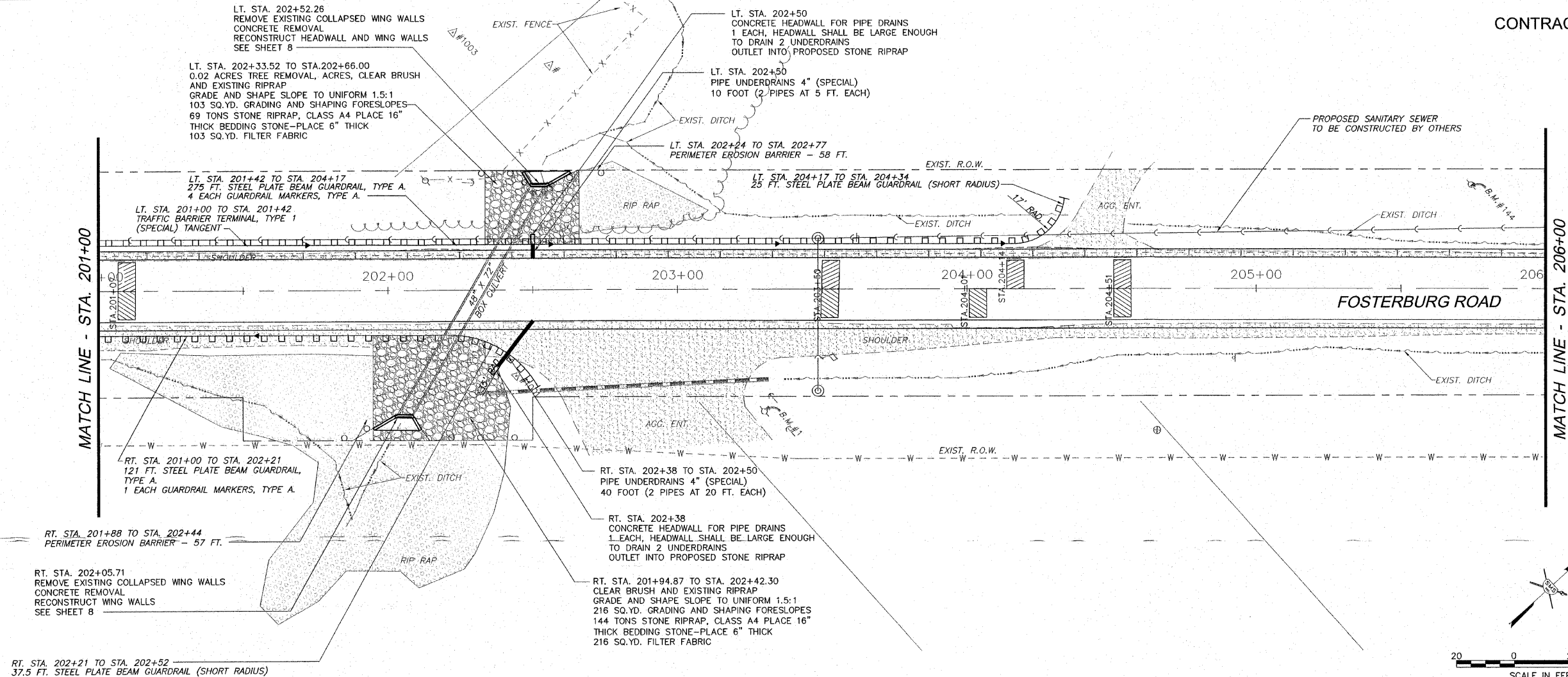


REVISIONS

SMS Sheppard, Morgan & Schwaab, Inc.
CONSULTING ENGINEERS AND LAND SURVEYORS
215 Market Street, P.O. Box E, Alton, IL 62002 618-259-9755 E-mail: mail@smsengr.com
10 Central Industrial Drive, Suite 3, Granite City, IL 62040 618-977-9700 E-mail: mail@smsengr.com
DESIGN FIRM # 184-000992

ALTON, ILLINOIS - FOSTERBURG ROAD IMPROVEMENTS
FAU ROUTE 9002
SECTION 09-00218-05-RS
PLAN AND PROFILE

REF. BK.	PG.
JOB NO. 207632.1	
DSN. BY: LDA	
DWN. BY: CAD	
CHK. BY: LDA	
DATE: OCTOBER, 2009	
SCALE: HORIZ: 1"=20'	
VERT: 1"=5'	
SHEET 4	OF 8



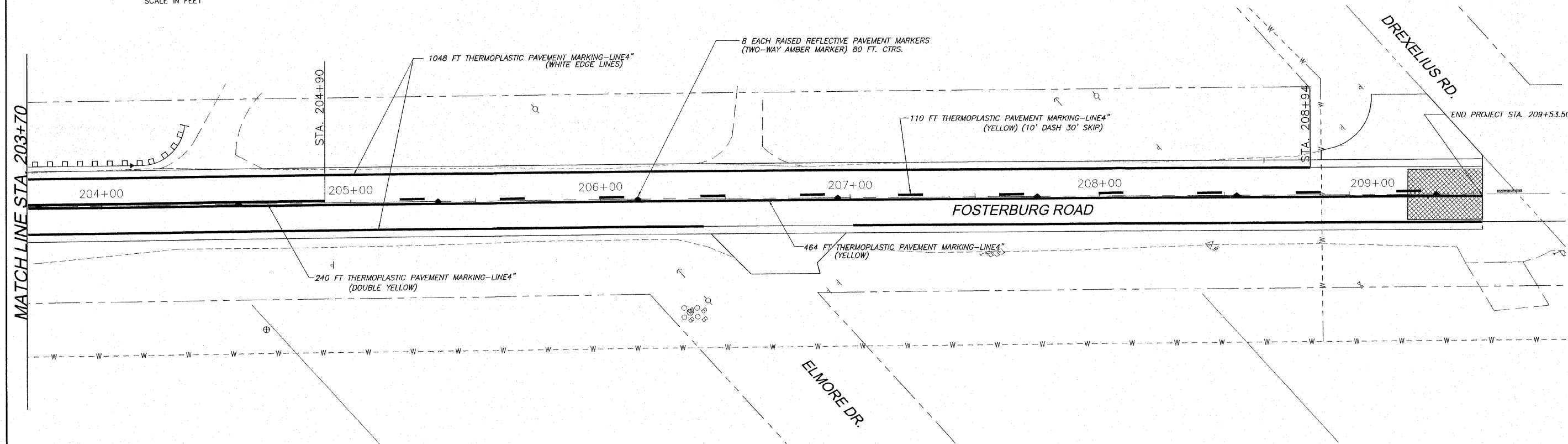
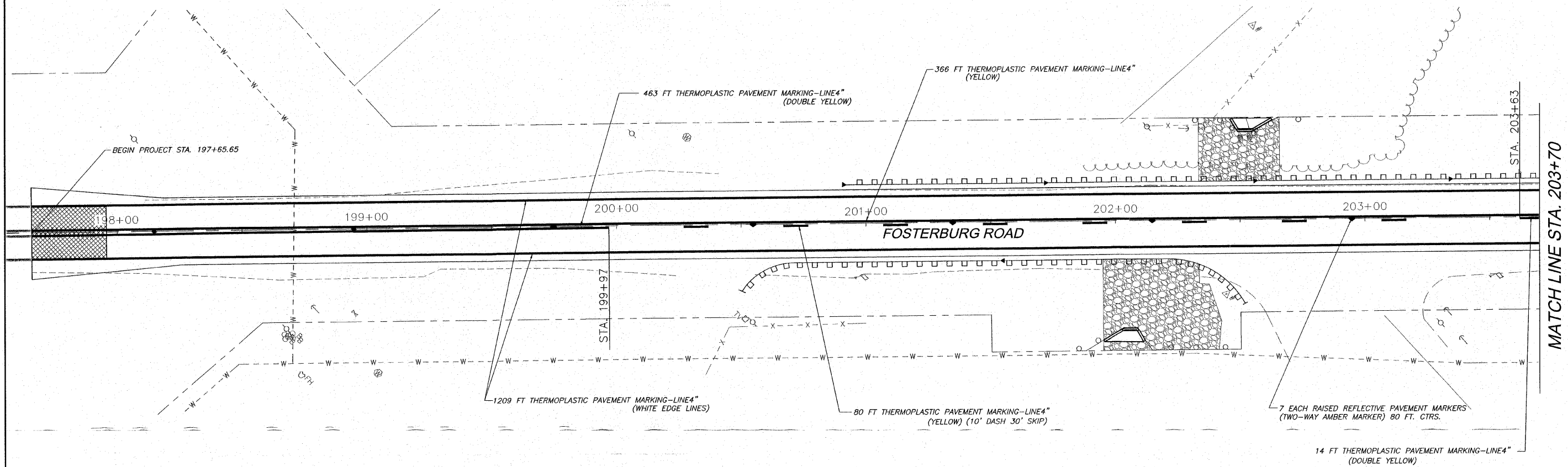
B.M. #144
RAILROAD SPIKE FOUND IN POWER POLE
(SOUTH P.P. HOUSE #3854)
NORTH SIDE OF FOSTERBURG ROAD
STA. 205+73.81, 36.07' LT.
ELEV. = 527.49

REVISIONS

SMS Sheppard, Morgan & Schwaab, Inc.
ENGINEERS
CONSULTING ENGINEERS AND LAND SURVEYORS
215 Marine Street, P.O. Box E, Alton, IL 62002 618462-9795 E-mail: mail@smsengineers.com
10 Central Industrial Drive, Suite 3, Granite City, IL 62040 618677-5700 E-mail: mail@smsengineers.com
DESIGN FIRM # 184-000992

ALTON, ILLINOIS - FOSTERBURG ROAD IMPROVEMENTS
FAU ROUTE 9002
SECTION 09-00218-05-RS
PLAN AND PROFILE

FSTBRG PP2.dwg
REF. BK. PG.
JOB NO. 207632.1
DSN. BY: LDA
DWN. BY: CAD
CHK. BY: LDA
DATE: OCTOBER, 2009
SCALE: HORIZ: 1"=20'
VERT: 1"=5'
SHEET 5 OF 8



REVISIONS

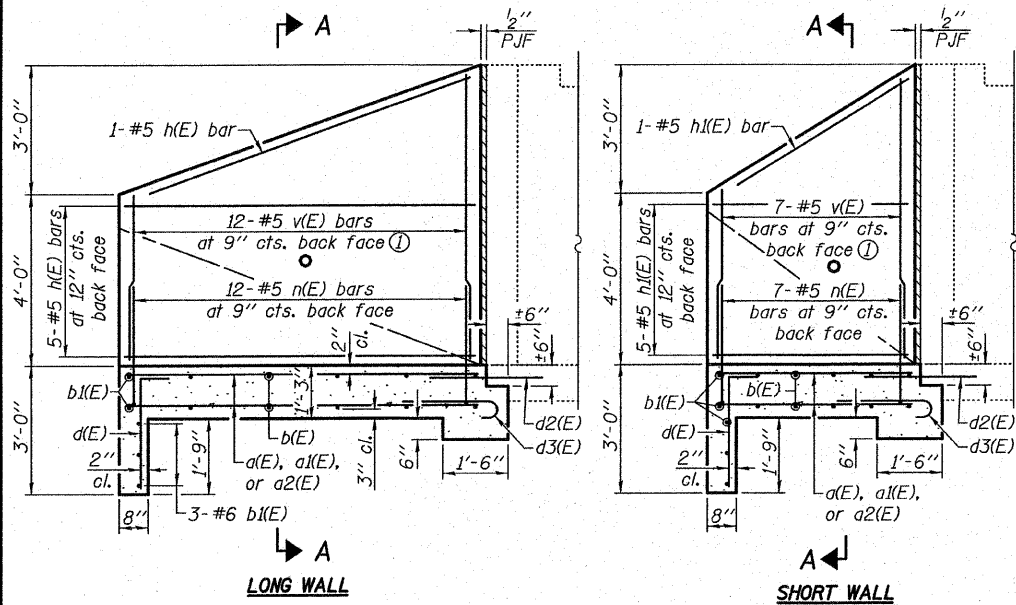
Sheppard, Morgan & Schwaab, Inc.
 CONSULTING ENGINEERS AND LAND SURVEYORS
 215 Market Street, P.O. Box E, Alton, IL 62002-6184/623755; E-mail: mail@smsengineers.com
 10 Central Industrial Drive, Granite City, IL 62040-6180/77-0700; E-mail: mail@smsengineers.com



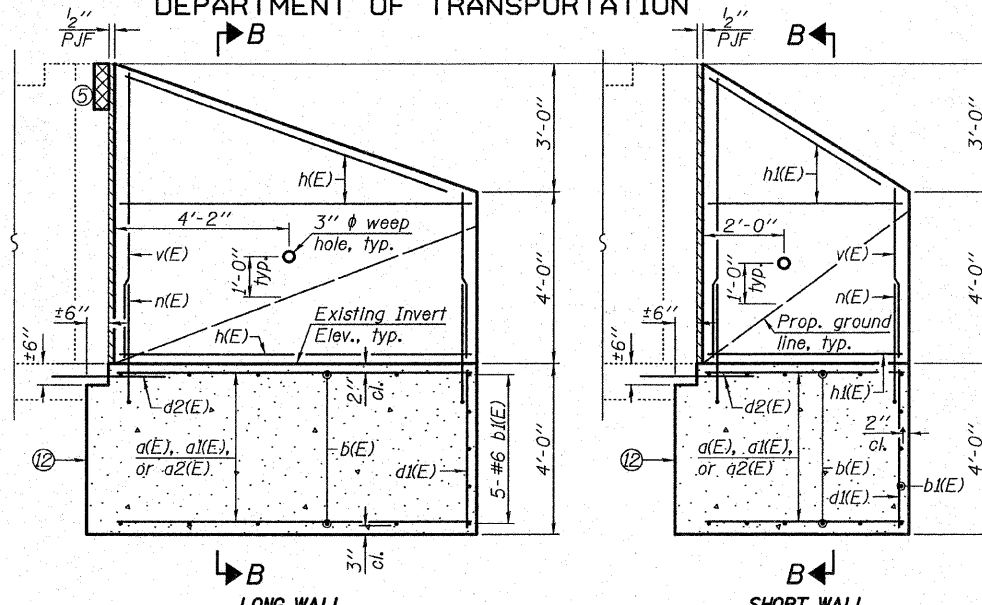
ALTON, ILLINOIS - FOSTERBURG ROAD IMPROVEMENTS
 FAU ROUTE 9002
 SECTION 09-00218-05-RS
 PAVEMENT MARKING PLAN

REF. BK.	PG.
JOB NO.	2076321
DSN. BY:	LDA
DWN. BY:	CAD
CHK. BY:	LDA
DATE:	OCTOBER, 2009
SCALE:	HORIZ. 1"=20'
SHEET	7 OF 8

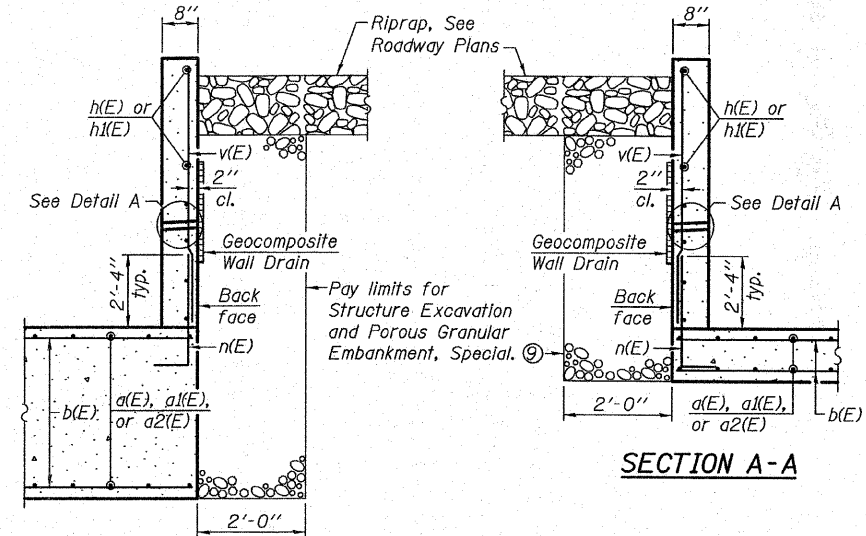
STATE OF ILLINOIS
DEPARTMENT OF TRANSPORTATION



UPSTREAM WINGWALL ELEVATION
See Downstream for weep hole placement.



DOWNSTREAM WINGWALL ELEVATION
See Upstream for wingwall reinforcement call-outs.



SECTION B-B

SECTION A-A

BILL OF MATERIAL

Bar No.	Size	Length	Shape
a(E)	20 #6	4'-10"	
a1(E)	32 #6	3'-11"	
a2(E)	6 #6	5'-7"	
b(E)	10 #6	22'-1"	
b1(E)	10 #6	15'-4"	
d(E)	16 #5	3'-4"	
d1(E)	16 #5	3'-7"	
d2(E)	12 #5	2'-6"	
d3(E)	7 #5	3'-3"	
h(E)	12 #5	8'-2"	
h1(E)	12 #5	4'-7"	
n(E)	38 #5	4'-2"	
v(E)	19 #5	10'-4"	
Porous Granular Embankment, Special			Cu. Yd. 11
Concrete Removal			Cu. Yd. 8.8
Structure Excavation			Cu. Yd. 21
Reinforcement Bars, Epoxy Coated			Pound 1,650
Concrete Box Culverts			Cu. Yd. 15.5
Geocomposite Wall Drain			Sq. Yd. 9
Structural Repair of Concrete (Depth equal to or less than 5 inches)			Sq. Ft. 3

DESIGN STRESSES

FIELD STRESSES

$f'_c = 3,500$ psi
 $f_y = 60,000$ psi (Reinforcement)

GENERAL PLAN

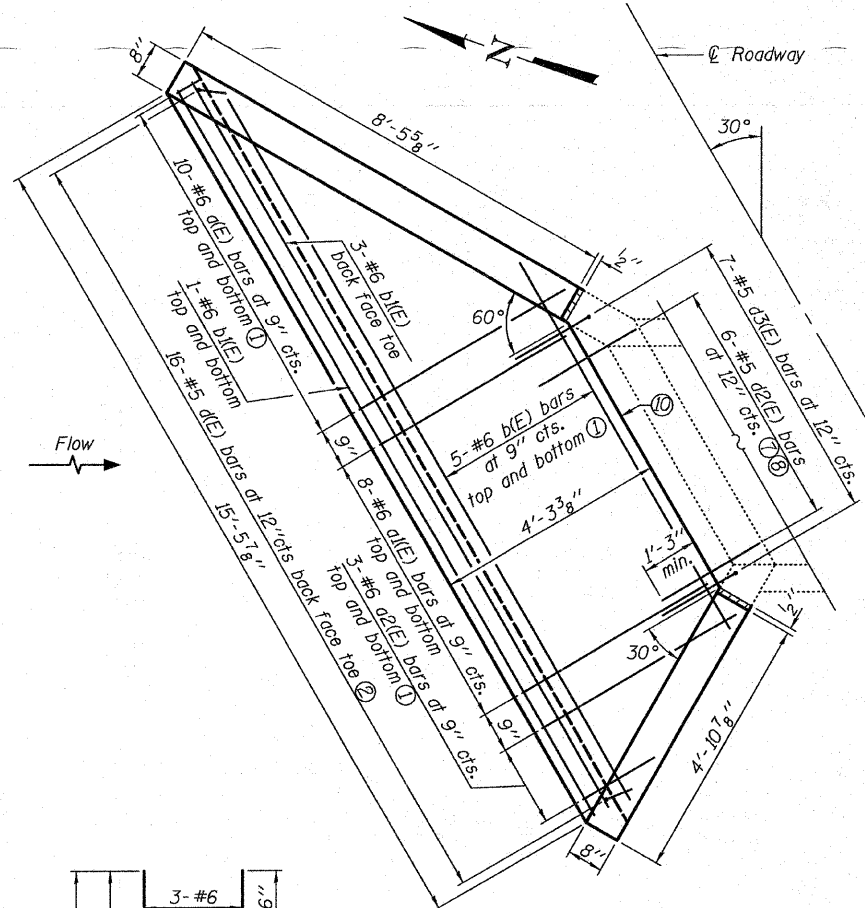
FOSTERBURG ROAD

FAU 9002 - SECTION 09-00218-05-RS

MADISON COUNTY

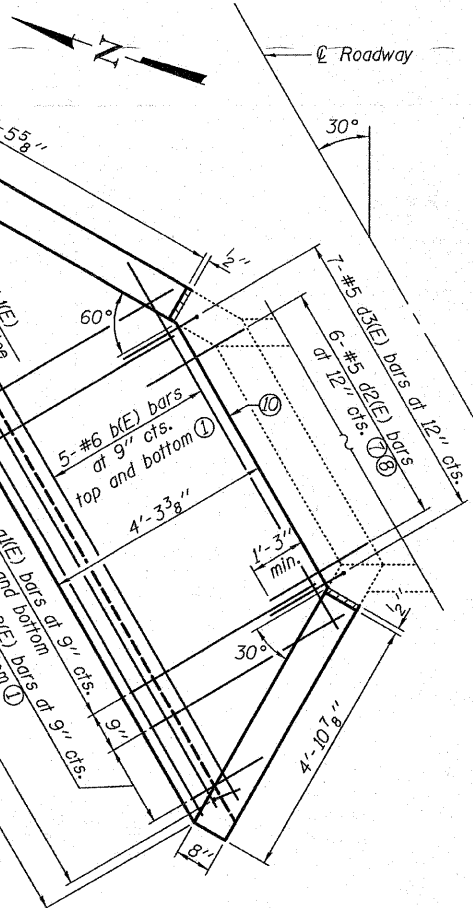
WINGWALL REPLACEMENT

STATION 202+31.22



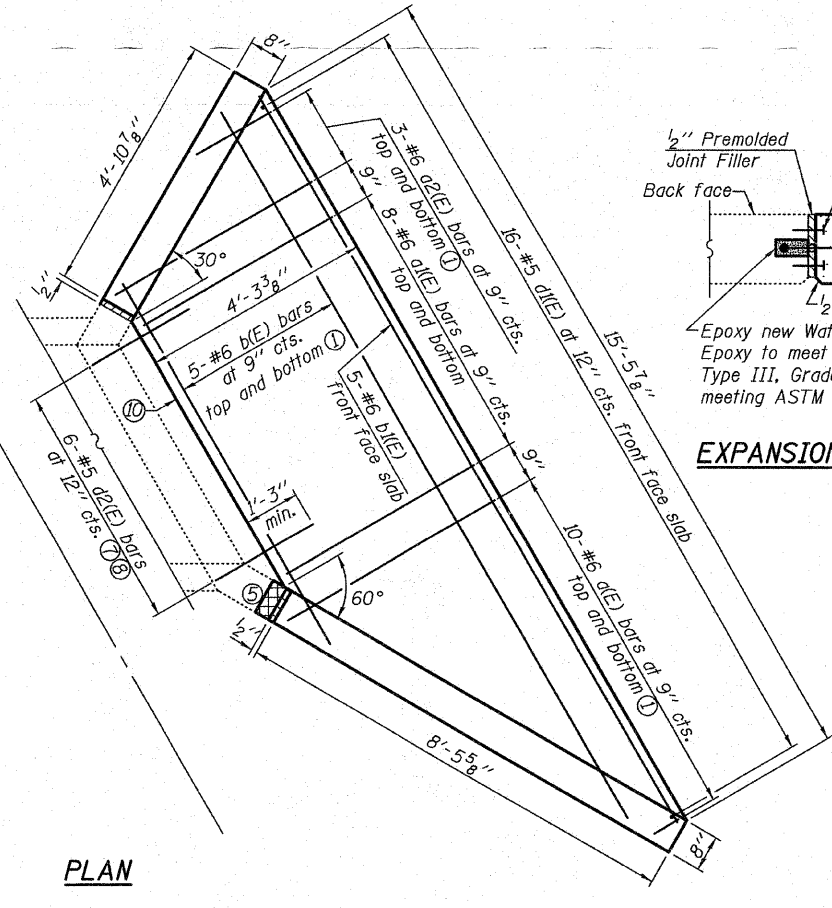
FIELD CUTTING DIAGRAM

Order a2(E) full length. Cut as shown and use remainder of bars in opposite face of slab.



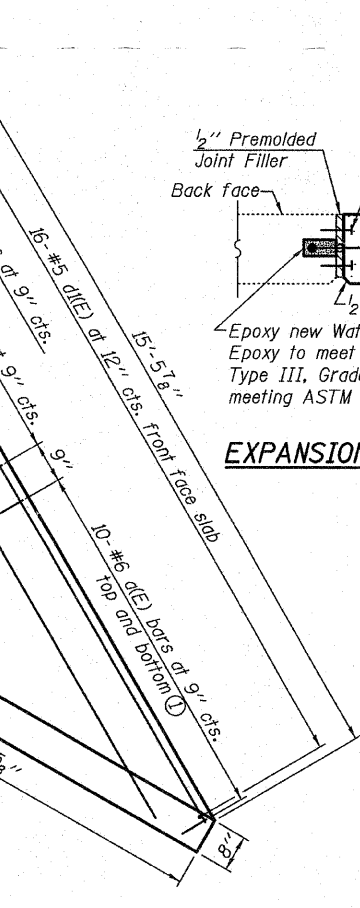
FIELD CUTTING DIAGRAM

Order b(E) full length. Cut as shown and use remainder of bars in opposite face of slab.



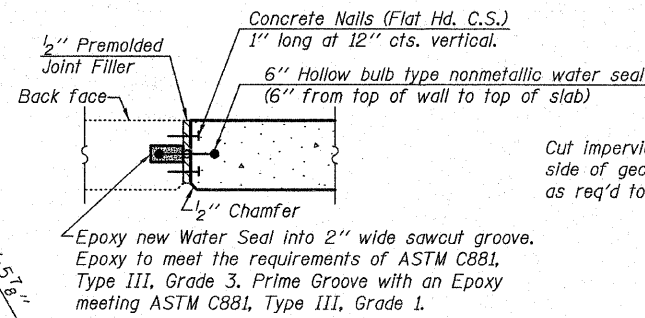
FIELD CUTTING DIAGRAM

Order a(E) full length. Cut as shown and use remainder of bars in opposite face of slab.

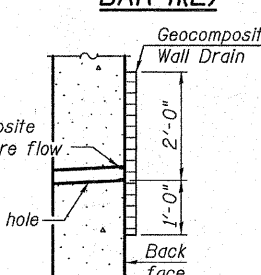


FIELD CUTTING DIAGRAM

Order v(E) full length. Cut as shown and use remainder of bars in opposite wall.



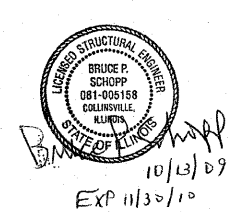
EXPANSION JOINT DETAIL



DETAIL A

Notes:

- See Field Cutting Diagram.
- Fan bars at ends of slab as required to fit.
- Reinforcement bars designated (E) shall be epoxy coated.
- Minimum bar lap: #5 bars = 2'-2"
- Cross-hatched area indicates Structural Repair of Concrete. See Special Provisions.
- Included in the cost of Concrete Box Culverts.
- Bar d2(E) shall be epoxy grouted into existing culvert according to Section 584 of the Standard Specifications. Embedment shall be according to the epoxy manufacturer's specifications. Cost to be included with Reinforcement Bars, Epoxy Coated.
- Contractor shall make an effort to avoid existing reinforcement when drilling holes for d2(E) bars. Existing plans are available upon request from the Resident Engineer and show reinforcement bars located at 12" cts.
- Over excavation beyond the limits of Structure Excavation shall not be measured for payment. Backfill beyond the limits shall not be measured for payment and shall be incidental to Structure Excavation.
- End of bottom slab of existing culvert.
- All edges shall have standard 3/4" chamfer.
- Structure Excavation under the existing culvert is limited horizontally to the ±6" slab ledge dimension. Any void under the culvert beyond the slab ledge at the time of concrete placement shall be backfilled with concrete poured monolithically with the proposed slab. Cost of additional concrete shall not be measured separately but included in the price of Concrete Box Culverts.



SHEET NO. 1	F.A.U. RTE.	SECTION	COUNTY	TOTAL SHEETS	SHEET NO.
	9002	09-00218-05-RS	MADISON	8	8
1 SHEETS	CONTRACT NO. 97407				
FED. ROAD DIST. NO. 7 ILLINOIS FED. AID PROJECT					
Eastport Business Center 1 100 Lanter Court, Suite 1 Collinsville, Illinois 62234 618-345-2200 Design Firm License No. 184.001115			DESIGNED JAD CHECKED MJP DRAWN JAD CHECKED MJP		