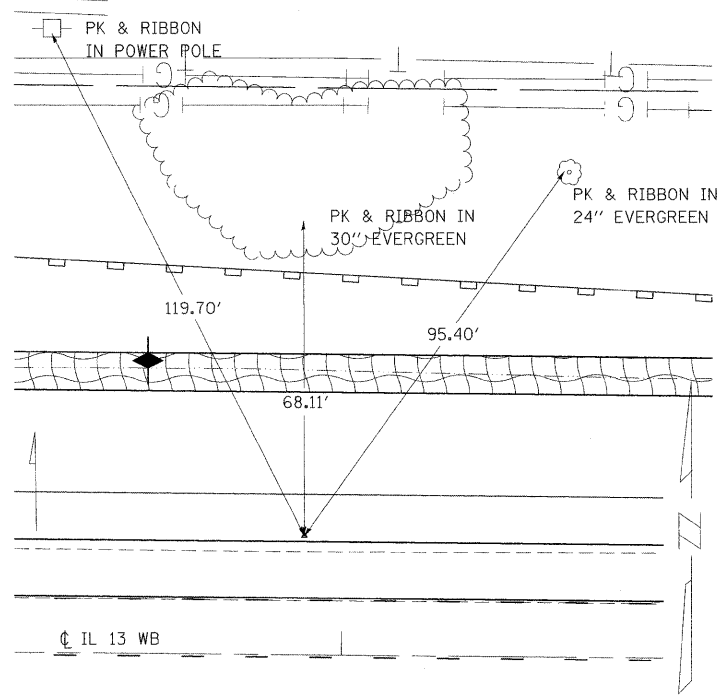
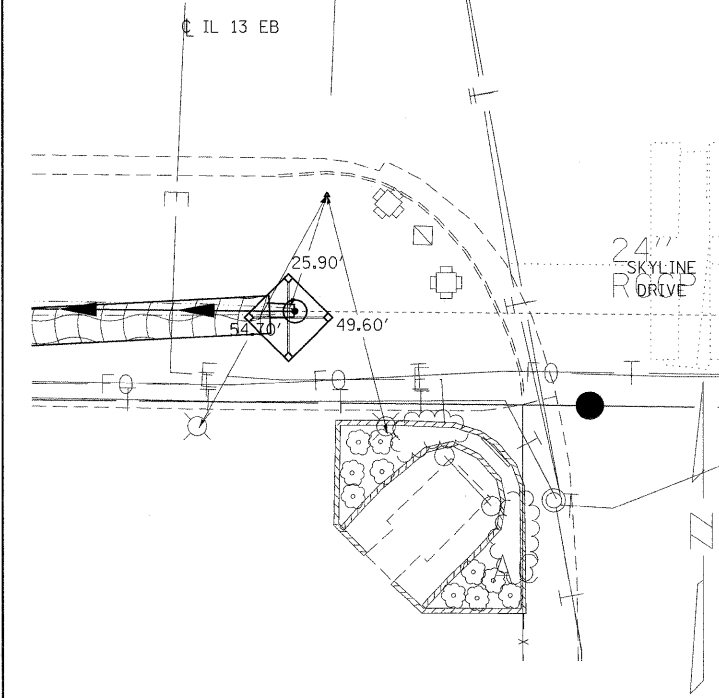


PT WP206  
 N 393327.0800  
 E 795323.4710  
 Z 434.1640  
 STA 727+91.96  
 OFF -23.83'



PT WP205  
 N 393199.6700  
 E 796020.6520  
 Z 439.4160  
 STA 734+90.51  
 OFF 95.86'



FILE NAME = c:\pwork\pwidot\shepardg\dnis47330\dstm13-sht-ATB.dgn  
 USER NAME = shepardgd  
 PLOT SCALE = 20,0000' / IN.  
 PLOT DATE = 10/14/2009

DESIGNED -	REVISD -
DRAWN -	REVISD -
CHECKED -	REVISD -
DATE -	REVISD -

**STATE OF ILLINOIS  
 DEPARTMENT OF TRANSPORTATION**

**ALIGNMENTS, TIES, AND BENCHMARKS**

SCALE: \_\_\_\_\_ SHEET NO. \_\_\_\_ OF \_\_\_\_ SHEETS STA. \_\_\_\_\_ TO STA. \_\_\_\_\_

F.A.P. RTE. 331	SECTION (1-2)N-2,R;(1X-1)N-3,R-2	COUNTY WILLIAMSON	TOTAL SHEETS 202	SHEET NO. 29
CONTRACT NO. 98857				ILLINOIS FED. AID PROJECT