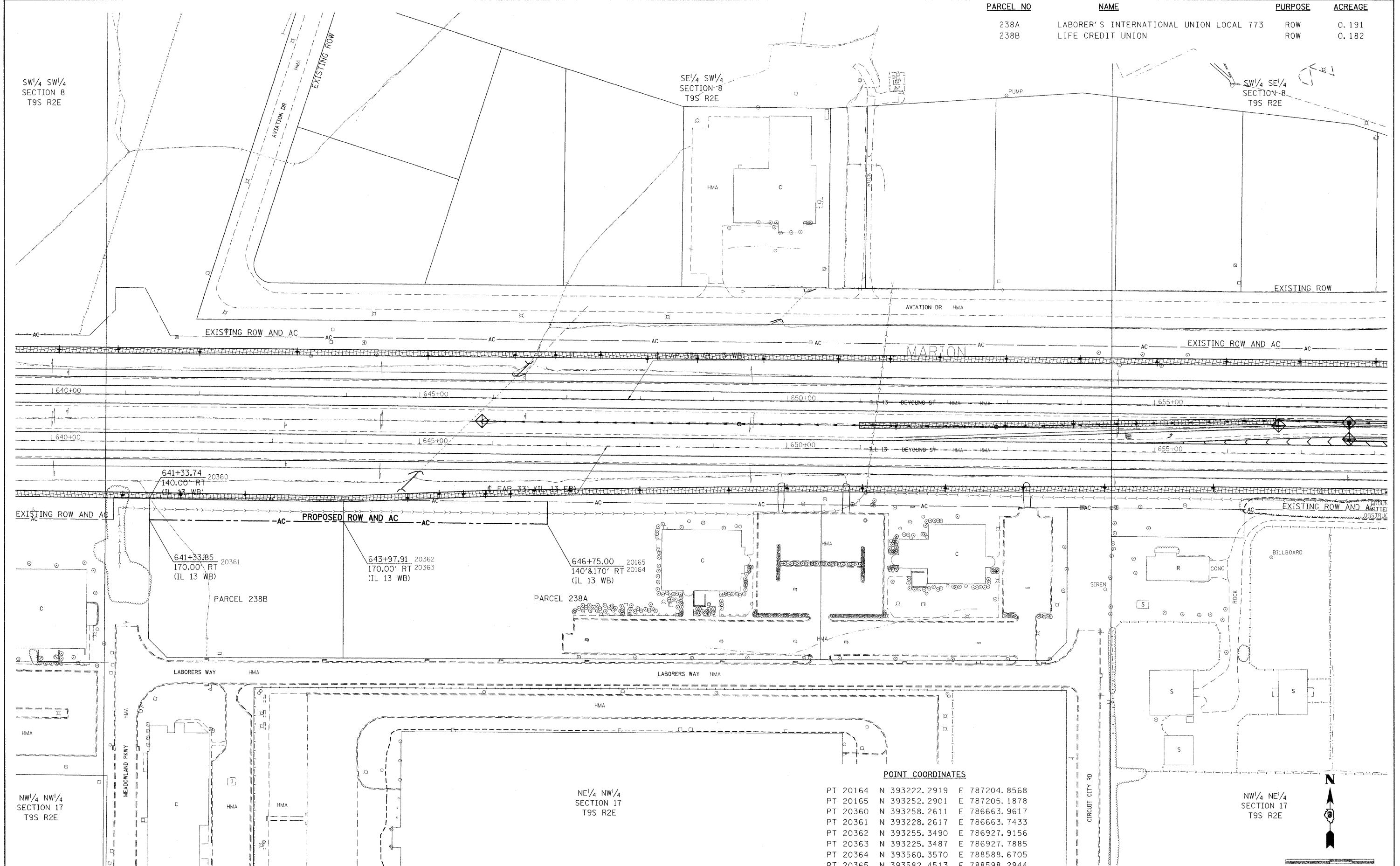


PARCEL NO	NAME	PURPOSE	ACREAGE
238A	LABORER'S INTERNATIONAL UNION LOCAL 773	ROW	0.191
238B	LIFE CREDIT UNION	ROW	0.182



SW/4 SW/4
SECTION 8
T9S R2E

SE/4 SW/4
SECTION 8
T9S R2E

SW/4 SE/4
SECTION 8
T9S R2E

EXISTING ROW AND AC

PROPOSED ROW AND AC

EXISTING ROW AND AC

641+33.74
140.00' RT
(IL 13 WB)

PARCEL 238B

643+97.91 20362
170.00' RT 20363
(IL 13 WB)

PARCEL 238A

646+75.00 20165
140' & 170' RT 20164
(IL 13 WB)

NW/4 NW/4
SECTION 17
T9S R2E

NE/4 NW/4
SECTION 17
T9S R2E

NW/4 NE/4
SECTION 17
T9S R2E

POINT COORDINATES

PT 20164	N	393222.2919	E	787204.8568
PT 20165	N	393252.2901	E	787205.1878
PT 20360	N	393258.2611	E	786663.9617
PT 20361	N	393228.2617	E	786663.7433
PT 20362	N	393255.3490	E	786927.9156
PT 20363	N	393225.3487	E	786927.7885
PT 20364	N	393560.3570	E	788588.6705
PT 20365	N	393582.4513	E	788598.2944

FILE NAME =	USER NAME = shepardgd	DESIGNED -	REVISED -	STATE OF ILLINOIS DEPARTMENT OF TRANSPORTATION	IL 13 FROM IL 148 TO SKYLINE RIGHT OF WAY SHEET			F.A.P RTE.	SECTION	COUNTY	TOTAL SHEETS	SHEET NO.
et:\pwork\pwidot\shepardgd\dms47330\F	dstiml3-sht-rowplan.dgn	DRAWN -	REVISED -					331	(1-2)N-2,R;(1X-1)N-3,R-2	WILLIAMSON	202	66
	PLOT SCALE = 60.0000' / IN.	CHECKED -	REVISED -					CONTRACT NO. 98857				
	PLOT DATE = 10/14/2009	DATE -	REVISED -					ILLINOIS FED. AID PROJECT				
					SCALE: 1"=60'	SHEET NO.	OF	SHEETS	STA. 640+00	TO STA. 658+00		