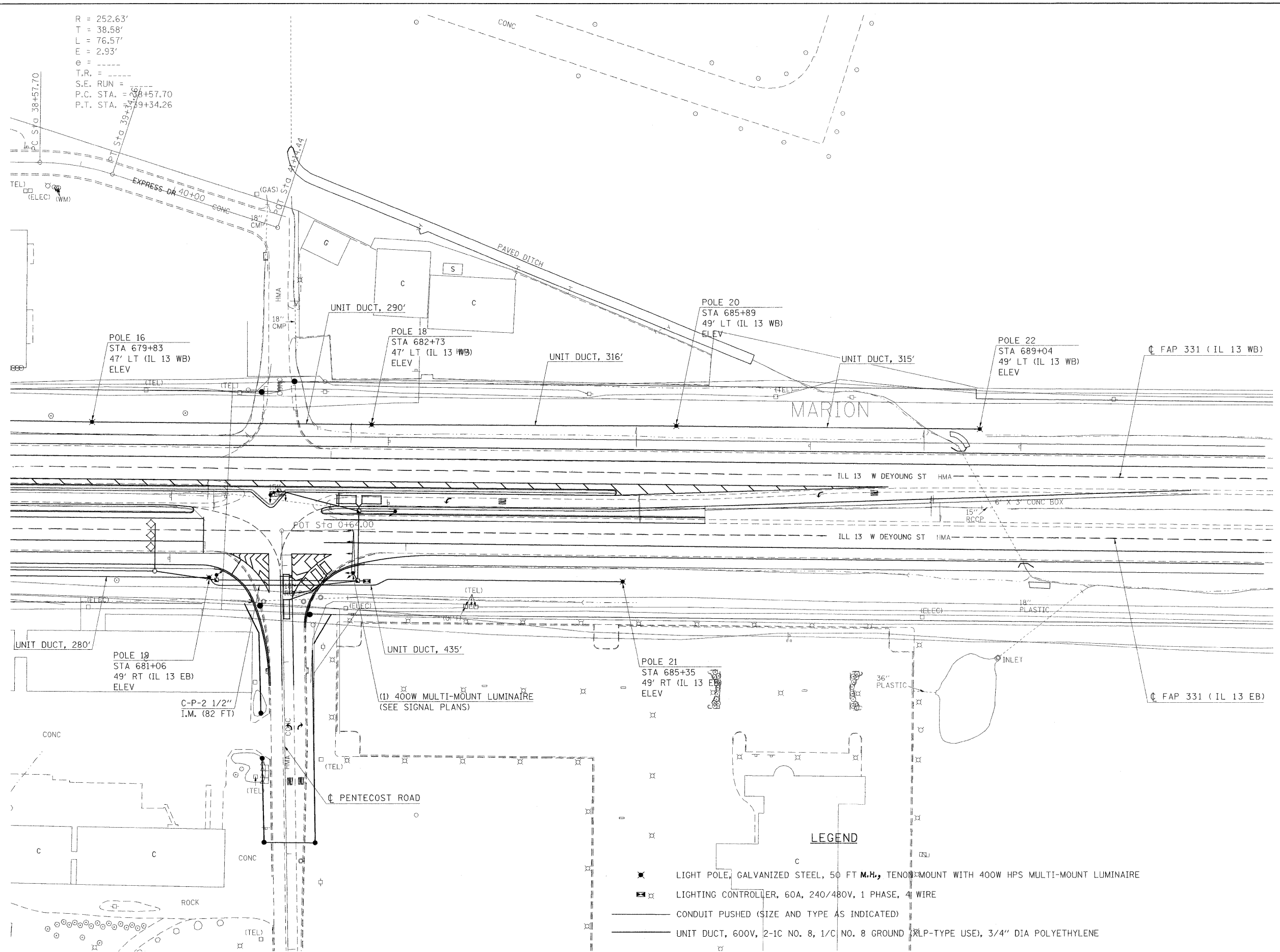


R = 252.63'
 T = 38.58'
 L = 76.57'
 E = 2.93'
 e = ----
 T.R. = ----
 S.E. RUN = ----
 P.C. STA. = 38+57.70
 P.T. STA. = 39+34.26



STATE OF ILLINOIS
DEPARTMENT OF TRANSPORTATION

PROPOSED HIGHWAY LIGHTING
ILLINOIS 13 AND PENTECOST ROAD

FILE NAME =
 c:\pwork\PWIDOT\SHEPARDGD\des47330\

USER NAME = shepardgd
 dstm13-sht-light.dgn
 PLOT SCALE = 50,0000 / IN.
 PLOT DATE = 10/14/2009

DESIGNED -
 DRAWN -
 CHECKED -
 DATE -

REVISED -
 REVISED -
 REVISED -
 REVISED -

SCALE: 1"=50' SHEET NO. OF SHEETS STA. 680+00.00 TO STA. 692+00.00

F.A.P. RTE.	SECTION	COUNTY	TOTAL SHEETS	SHEET NO.
331	(1-2)N-2,R;(1X-1)N-3,R-2	WILLIAMSON	202	89
CONTRACT NO. 98857				
ILLINOIS FED. AID PROJECT				