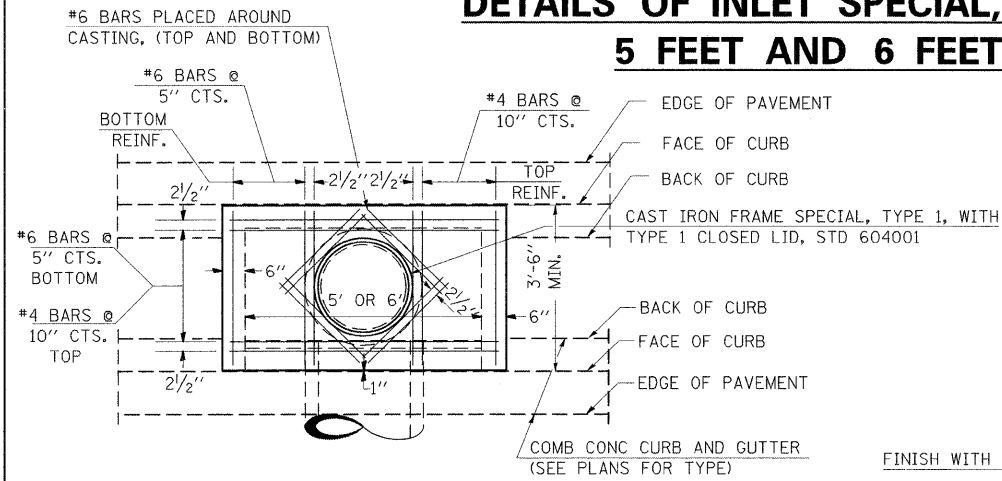
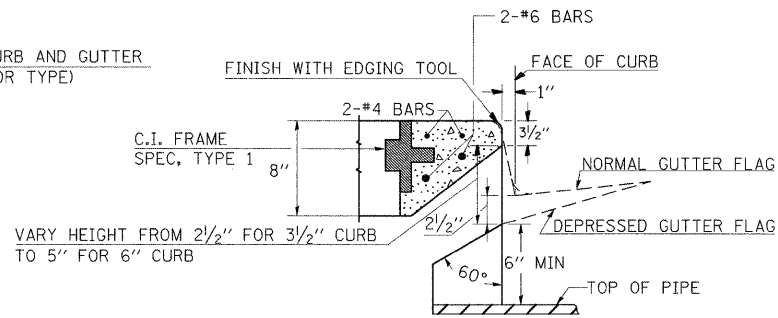


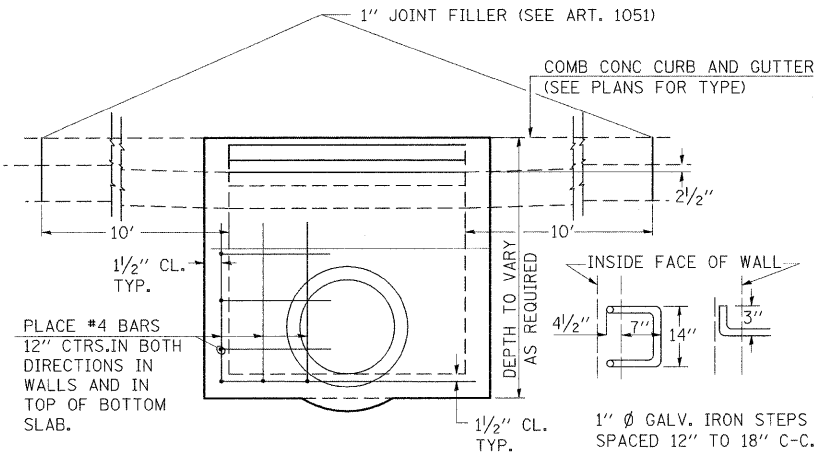
DETAILS OF INLET SPECIAL, TYPE 3, 5 FEET AND 6 FEET



PLAN

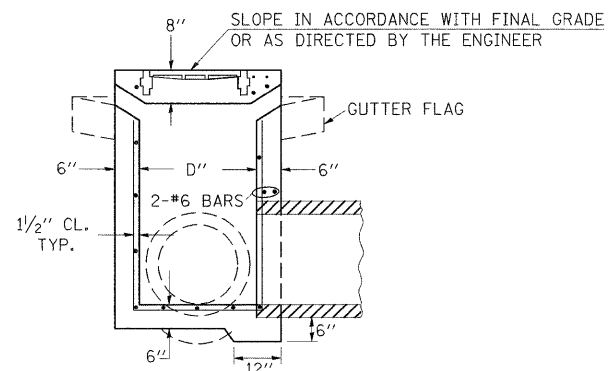


SECTION AT WEIR



ELEVATION

DESIGN	PIPE DIA	"D"
A	18" & LESS	2'-6"
B	21" & 24"	3'-0"
C	27" & 30"	3'-7"
D	33" & 36"	4'-2"
E	42"	4'-9"
F	48"	5'-0"
G	54"	6'-1"



SECTION

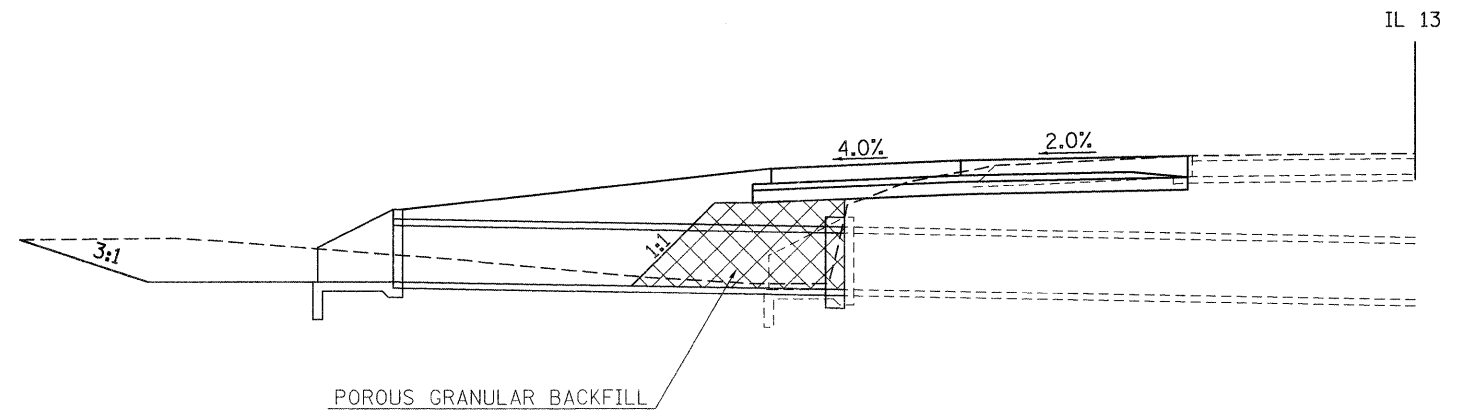
NOTE TO DESIGNER:

WHEN USING THIS STANDARD THE DESIGNER SHOULD ALSO CHECK BDE SPECIAL PROVISION 419 "PRECAST CONCRETE PRODUCTS".

REVISIONS	
REDRAWN	2-15-89
REVISED	8-15-94
REVISED	1-19-99
REVISED	9-6-04
RESIZED	5-6-08

STD. 9-1

DETAIL OF POROUS GRANULAR BACKFILL FOR CULVERT EXTENSIONS



TO BE USED AT ALL CROSSROAD CULVERT EXTENSIONS

IL 13

NOTES:

PROVIDE 1 1/2" CLEARANCE TYP. ALL REINFORCEMENT UNLESS OTHERWISE SPECIFIED.

CLASS SI CONCRETE SHALL BE USED THROUGHOUT. SET FACE OF INLET 1" BEHIND FACE OF CURB. DEPRESS GUTTER FLOWLINE AT INLET 2 1/2" BELOW NORMAL GUTTER FLOWLINE. CONSTRUCT TRANSITION IN FLOWLINE IN 10 FEET EACH SIDE OF INLET. PIPES TO BE CONNECTED TO INLET AS SHOWN ON STORM SEWER LAYOUT.

INLETS WILL BE PAID FOR AT THE CONTRACT UNIT PRICE EACH FOR **INLET, SPECIAL, TYPE 3, 5 FEET** OR **INLET, SPECIAL, TYPE 3, 6 FEET** WHICH PRICE SHALL INCLUDE THE CAST IRON FRAME, SPECIAL, TYPE 1 WITH TYPE 1 CLOSED LID, THE REINFORCEMENT BARS, METAL STEPS AND JOINT FILLER.

**THE GALVANIZED IRON STEPS AS DETAILED HEREON ARE TYPICAL. STEPS OF OTHER DESIGN AND MATERIAL THAT WILL CONFORM TO THE MINIMUM REQUIREMENTS OF THE STEPS SHOWN, MAY BE USED WHEN APPROVED BY THE ENGINEER.

IF THE INLET IS NOT CAST IN PLACE THEN THE INLET SHALL BE PRODUCED ACCORDING TO THE DEPARTMENT'S CURRENT POLICY MEMORANDUM, "QUALITY CONTROL/QUALITY ASSURANCE PROGRAM FOR PRECAST CONCRETE PRODUCTS".

FILE NAME =	USER NAME = shepardgd	DESIGNED -	REVISED -				
ct:\pw\work\PIWIDOT\SHEPARODGD\dms47330\F	dstim13\shh\standards.dgn	DRAWN -	REVISED -				
	PLOT SCALE = 50.0000' / IN.	CHECKED -	REVISED -				
	PLOT DATE = 10/14/2009	DATE -	REVISED -				
STATE OF ILLINOIS DEPARTMENT OF TRANSPORTATION				PROJECT DETAILS			
SCALE: _____		SHEET NO. _____ OF _____ SHEETS		STA. _____ TO STA. _____		F.A.P. RTE. 331 SECTION (1-2)N-2,R;1X-1)N-3,R-2 COUNTY WILLIAMSON TOTAL SHEETS 202 SHEET NO. 114 CONTRACT NO. 98857	
ILLINOIS FED. AID PROJECT							