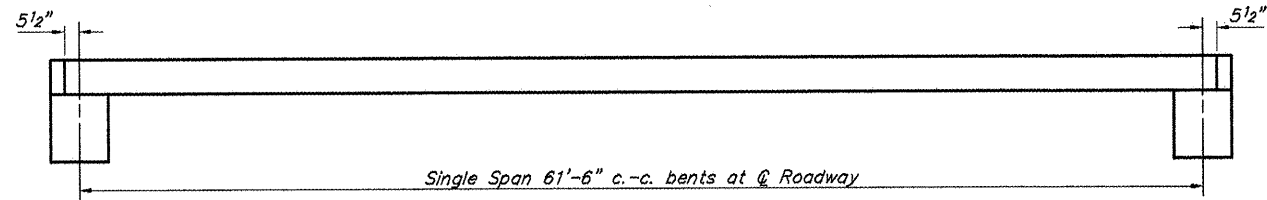
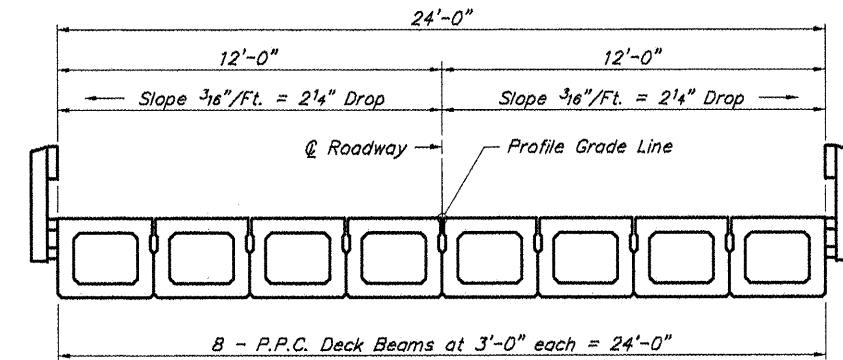


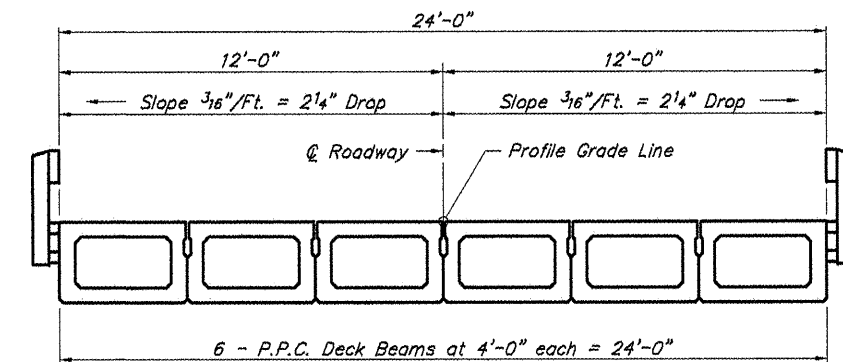
ROUTE	SECTION	COUNTY	TOTAL SHEETS	SHEET NO
TR 320	06-10125-00-BR	FRANKLIN	14	4
PROJECT NO. BROS-055(52)			CONTRACT NO. 99308	



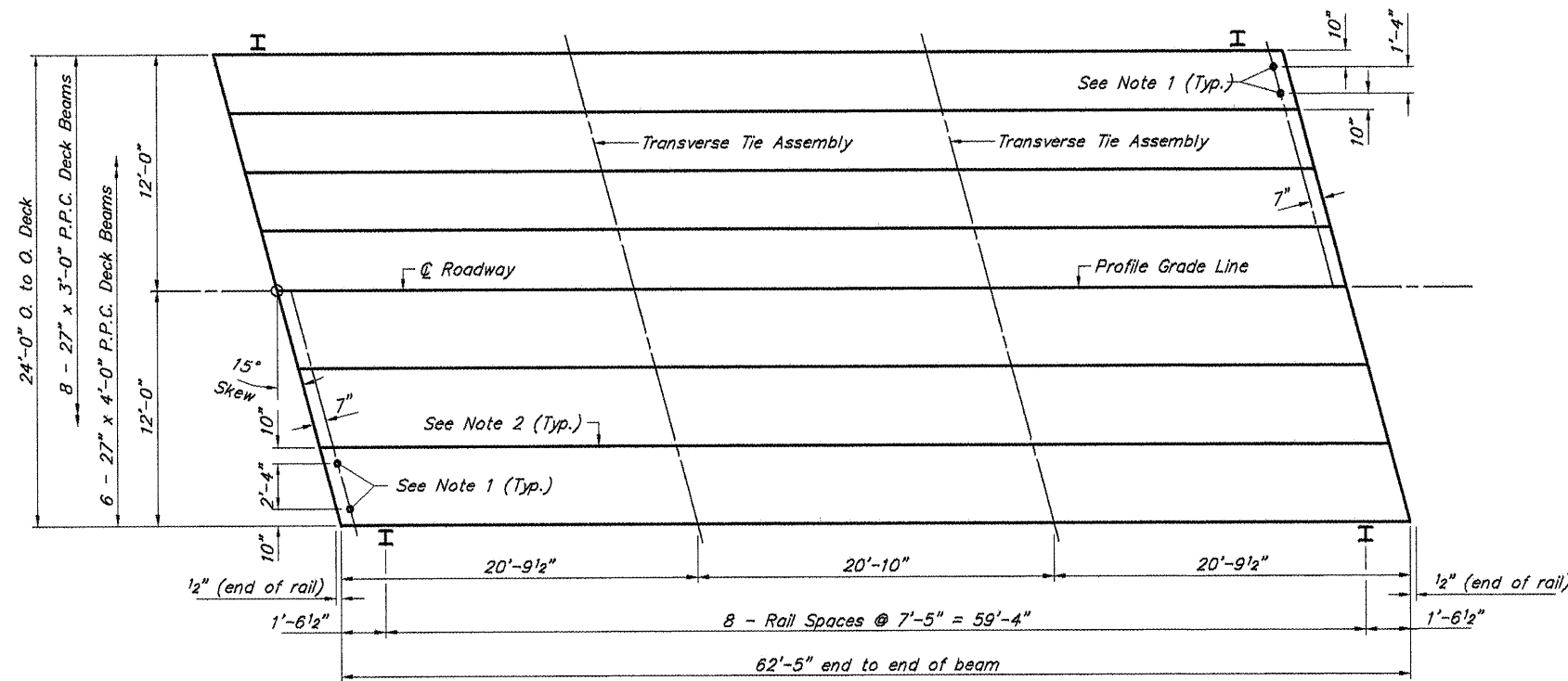
ELEVATION



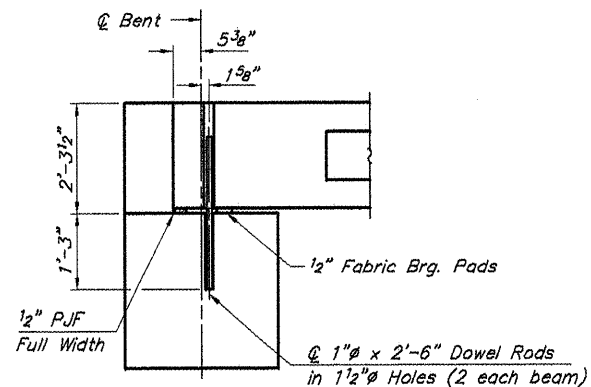
CROSS SECTION



CROSS SECTION



PLAN



SECTION AT ABUTMENTS

(Along \bar{C} Beams)

NOTES

1. After beams have been erected, holes shall be drilled into substructure and anchor dowels placed. Dowel holes shall be filled with non-shrink grout to top of beam and allowed to cure min. 24 hrs. prior to grouting the shear keys.
2. Longitudinal keys shall be grouted.

QUANTITIES FOR ONE SPAN

P.P.C. Deck Beams (27" Depth)	1,498 Sq. Ft.
Steel Railing, Type S1	125 Ft.

SUPERSTRUCTURE
TOWNSHIP ROUTE 320 (FRISCO ROAD)
TAYLOR BRANCH
SECTION 06-10125-00-BR
FRANKLIN COUNTY
STRUCTURE NO. 028-3403