

B.M. - RR Spike in Telephone Pole
 16' Lt. Station 15+37
 Assumed Elev. 435.00

Existing Structure - Timber deck with
 steel stringers on closed timber
 pile bent abutments & one
 timber pile bent pier.
 20.1' Wide x 50.2' Long

CURVE DATA

D = 24°49'57"
 R = 230.73'

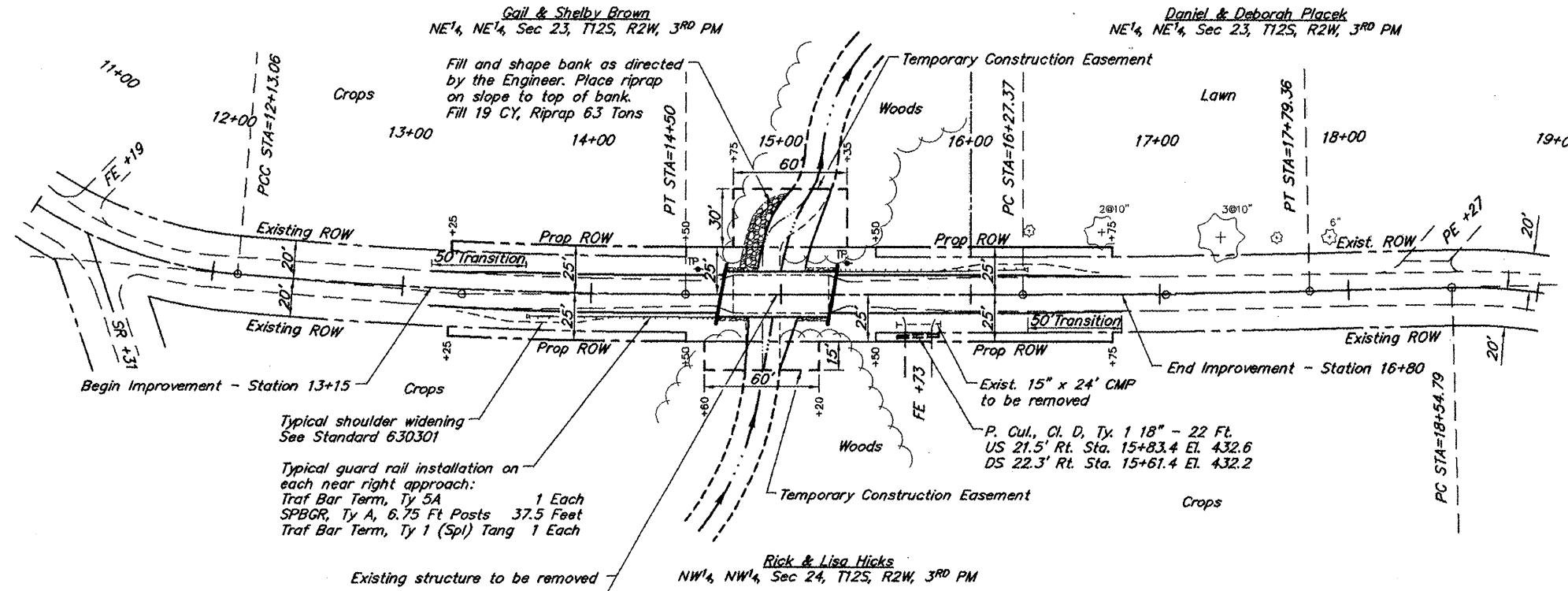
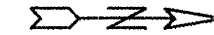
CURVE DATA

PI STA=13+31.60
 $\Delta = 5°02'34"$ T = 118.55'
 D = 2°07'42" L = 236.94'
 R = 2,692.10' E = 2.61'
 Normal Crown

CURVE DATA

PI STA=17+03.37
 $\Delta = 1°35'00"$ T = 76.00'
 D = 1°02'30" L = 151.99'
 R = 5,500.04' E = 0.53'
 Normal Crown

ROUTE	SECTION	COUNTY	TOTAL SHEETS	SHEET NO.
FAU 9901	06-01186-00-BR	UNION	10	2
PROJECT NO. ARA-BRS-0181(048)			CONTRACT NO. 99352	



SCALES:
 1" = 80' HOR
 1" = 10' VER

Typical shoulder widening
 See Standard 6.30301

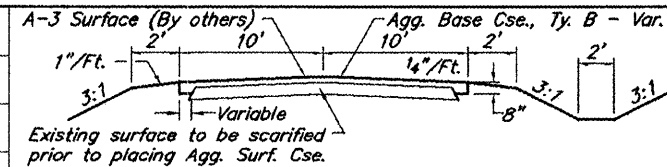
Typical guard rail installation on
 each near right approach:
 Traf Bar Term, Ty 5A 1 Each
 SPBGR, Ty A, 6.75 Ft Posts 37.5 Feet
 Traf Bar Term, Ty 1 (Spl) Tang 1 Each

Existing structure to be removed

Station 14+97.8 - Single span precast
 prestressed concrete deck beam
 bridge 59.63' bk-bk Abutments
 Skewed 10° Forward Left

Note: Any necessary tree removal will not
 be paid for separately but shall be
 included in the cost of the contract.

CURVE DATA
 D = 21°35'45"
 R = 265.31'



TYPICAL ROADWAY SECTION

