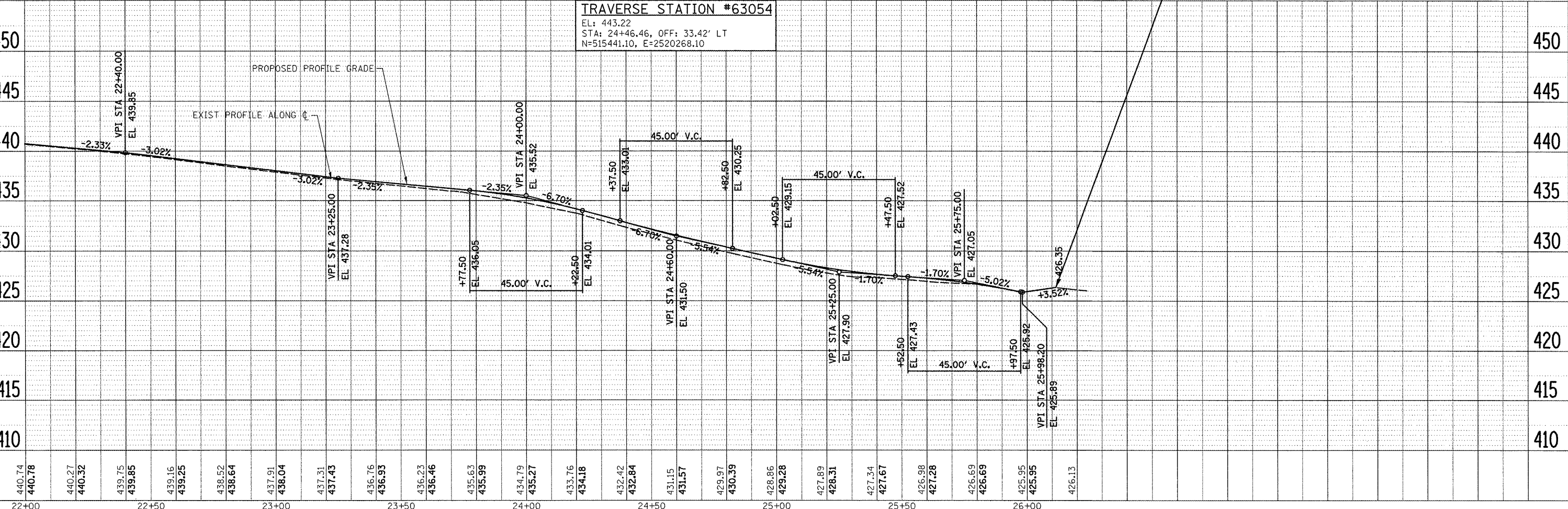


PLAN	REVISIONS	DATE
	NO.	
	BY	
	DATE	
	DESCRIPTION	
	REVISIONS	
	NO.	
	BY	
	DATE	
	DESCRIPTION	

PROFILE	REVISIONS	DATE
	NO.	
	BY	
	DATE	
	DESCRIPTION	
	REVISIONS	
	NO.	
	BY	
	DATE	
	DESCRIPTION	

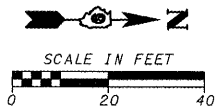
MATCHLINE STA 22+00



**TRAVERSE STATION #63054**  
 EL: 443.22  
 STA: 24+46.46, OFF: 33.42' LT  
 N=515441.10, E=2520268.10

**LEGEND**  
 - - - - - APPROXIMATE LIMITS OF CONSTRUCTION  
 - - - - - SHOULDER  
 ▨ EXISTING APPROXIMATE ROW  
 ▩ TEMPORARY RAMP  
 ▤ VAR DEPTH MILLING (1 1/2" MAX)  
 ▦ GRADE TO DRAIN

**END IMPROVEMENTS  
 STA. 25+97.50**



**STATE OF ILLINOIS  
 DEPARTMENT OF TRANSPORTATION**

**GRANT - PLAN & PROFILE**

F.A.U. RTE.	SECTION	COUNTY	TOTAL SHEETS	SHEET NO.
VAR	09-00028-00-RS	PERRY	12	8
CONTRACT NO. 99386				
ILLINOIS FED. AID PROJECT ARA-5084 (003)				

SCALE: SHEET NO. OF SHEETS STA. TO STA.

FILE NAME = H:\S149\VC\_PP\_DRAFT\_6305\_3.dgn

USER NAME = USERDESCR

DESIGNED - DLD

REVISED -

PLOT SCALE = 20.0000 / IN.

CHECKED - KOJ

REVISED -

PLOT DATE = 9/29/2009

DATE -

REVISED -