

STATE OF ILLINOIS
DEPARTMENT OF TRANSPORTATION

DIVISION OF HIGHWAYS

**PROPOSED
HIGHWAY PLANS**

FAP ROUTE 343: IL. RTE. 68 (DUNDEE ROAD)
AT IL RTE 83 (ELMHURST ROAD)
SECTION: 3041N-3(12)
PROJECT: ACCM-0343 (028)
INTERSECTION IMPROVEMENT

COOK COUNTY
C-91-133-13

FOR INDEX OF SHEETS, SEE SHEET NO. 2

THE PROJECT IS LOCATED IN THE
VILLAGE OF WHEELING

TRAFFIC DATA:
IL RTE 68 2013 ADT = 27,600
POSTED SPEED LIMIT = 35 MPH

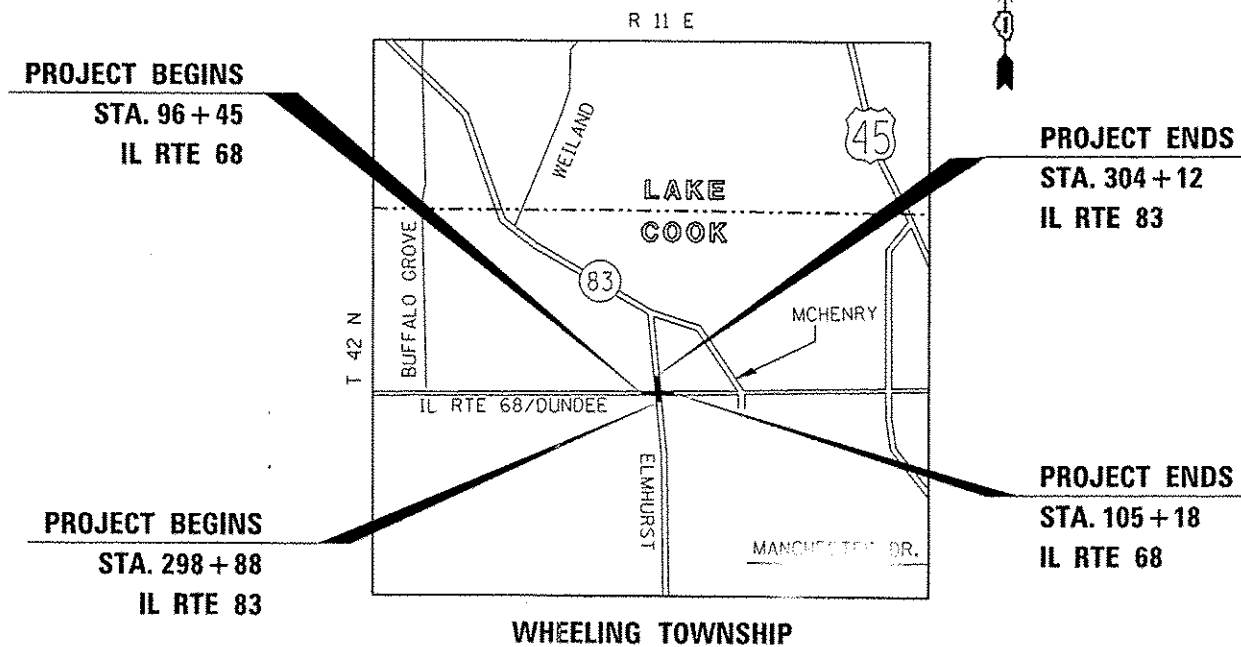
IL RTE 83 2013 ADT = 18,100
POSTED SPEED LIMIT = 40 MPH

FULL SIZE PLANS HAVE BEEN PREPARED USING STANDARD
ENGINEERING SCALES. REDUCED SIZED PLANS WILL NOT
CONFORM TO STANDARD SCALES. IN MAKING MEASUREMENTS
ON REDUCED PLANS, THE ABOVE SCALES MAY BE USED.

J.U.L.I.E.
JOINT UTILITY LOCATION INFORMATION FOR EXCAVATION
1-800-892-0123
OR 811

PROJECT ENGINEER KARI SMITH (847) 705-4437
PROJECT MANAGER KEN ENG (847) 705-4247

CONTRACT NO. 60V97



IL RTE 68 /DUNDEE RD - GROSS AND NET LENGTH = 873 FT. = 0.17 MILE
IL RTE 83 /ELMHURST RD. - GROSS AND NET LENGTH = 524 FT. = 0.10 MILE
TOTAL GROSS AND NET LENGTH = 1397 FT. = 0.26 MILE

REVISÉD 12-28-15

F.A.P. RTE.	SECTION	COUNTY	TOTAL SHEETS	SHEET NO.
343	3041N-3(12)	COOK	78	1
ILLINOIS			CONTRACT NO. 60V97	

* 78+1 = 79 TOTAL SHEETS

D-91-133-13




STATE OF ILLINOIS
DEPARTMENT OF TRANSPORTATION
DIVISION OF HIGHWAYS
SUBMITTED October 16, 2015
John P. [Signature]
DEPUTY DIRECTOR OF HIGHWAYS, REGION/ENGINEER
Dec 4, 2015
John D. Baranzelli PE
ENGINEER OF DESIGN AND ENVIRONMENT
Dec 4, 2015
Omar Esman PE
DIRECTOR OF HIGHWAYS, CHIEF ENGINEER

PRINTED BY THE AUTHORITY
OF THE STATE OF ILLINOIS

SHEET NO.

INDEX OF SHEETS

- 1 COVER SHEET
- 2 INDEX OF SHEETS, HIGHWAY STANDARDS, AND GENERAL NOTES
- 3 - 8 SUMMARY OF QUANTITIES
- 9 - 10 TYPICAL SECTIONS
- 11 SCHEDULES OF QUANTITIES
- 12 - 14 ALIGNMENT, TIES, AND BENCHMARKS
- 15 - 16 PLAN AND PROFILE SHEETS
- 17 - 20 SIDEWALK DETAIL
- 21 - 24 SUGGESTED STAGES OF CONSTRUCTION AND TRAFFIC CONTROL
- 25 EROSION CONTROL AND SEDIMENT SHEETS
- 26 - 28 DRAINAGE AND UTILITIES SHEETS
- 29 MANHOLE WITH RESTRICTOR PLATE DETAIL SHEET
- 30 SUBSURFACE UTILITY ENGINEERING SURVEY SHEETS
- 31 - 35 RIGHT-OF-WAY SHEETS
- 36 LANDSCAPING AND PAVEMENT MARKING DETAILS
- 37 - 58 TRAFFIC SIGNAL PLAN SHEETS
- 59 DRIVEWAY DETAILS - DISTANCE BETWEEN R.O.W AND FACE OF CURB AND EDGE OF SHOULDER > 15' (BD-01)
- 60 DRIVEWAY DETAILS - DISTANCE BETWEEN R.O.W AND FACE OF CURB AND EDGE OF SHOULDER < 15' (BD-02)
- 61 DETAIL OF STORM SEWER CONNECTION TO EXISTING SEWER (BD-7)
- 62 DETAILS FOR FRAMES AND LIDS ADJUSTMENT WITH MILLING (BD-8)
- 63 MANHOLE WITH RESTRICTOR PLATE (BD-12)
- 64 PAVEMENT PATCHING FOR HMA SURFACED PAVEMENT (BD-22)
- 65 CURB AND GUTTER REMOVAL AND REPLACEMENT (BD-24)
- 66 TRAFFIC CONTROL AND PROTECTION FOR SIDEROADS, INTERSECTIONS, AND DRIVEWAYS (TC-10)
- 67 TYPICAL APPLICATIONS RAISED REFLECTIVE PAVEMENT MARKERS (SNOW-PLOW RESISTANT) (TC-11)
- 68 DISTRICT ONE TYPICAL PAVEMENT MARKINGS (TC-13)
- 69 TRAFFIC CONTROL AND PROTECTION AT TURN BAYS (TO REMAIN OPEN TO TRAFFIC) (TC-14)
- 70 PAVEMENT MARKING LETTERS AND SYMBOLS FOR TRAFFIC STAGING (TC-16)
- 71 ARTERIAL ROAD INFORMATION SIGN (TC-22)
- 72 DRIVEWAY ENTRANCE SIGNING (TC-26)
- * 73-78 CROSS SECTIONS

* INCLUDES SHEET 75A 

LIST OF STATE STANDARDS

- 000001-06 STANDARD SYMBOLS, ABBREVIATIONS AND PATTERNS
- 001006 DECIMAL OF AN INCH AND OF A FOOT
- 280001-07 TEMPORARY EROSION CONTROL SYSTEMS
- 424001-08 PERPENDICULAR CURB RAMPS FOR SIDEWALKS
- 424006-02 DIAGONAL CURB RAMPS FOR SIDEWALKS
- 424011-02 CORNER PARALLEL CURB RAMPS FOR SIDEWALKS
- 424016-02 MID-BLOCK CURB RAMPS FOR SIDEWALKS
- 424021-03 DEPRESSED CORNER FOR SIDEWALKS
- 442101-07 CLASS B PATCHES
- 601001-04 SUB-SURFACE DRAINS
- 602001-02 CATCH BASIN TYPE A
- 602011-02 CATCH BASIN TYPE C
- 602301-04 INLET - TYPE A
- 602401-03 MANHOLE TYPE A
- 602406-06 MANHOLE TYPE A 6' (1.8 m) DIAMETER
- 602416-04 MANHOLE TYPE A 8' (2.4 m) DIAMETER
- 602601-03 PRECAST REINFORCED CONCRETE FLAT SLAB TOP
- 604001-04 FRAME AND LIDS TYPE 1
- 604091-03 FRAME AND GRATE TYPE 24
- 606001-06 CONCRETE CURB TYPE B AND COMBINATION CONCRETE CURB AND GUTTER
- 701101-04 OFF-RD OPERATIONS, MULTILANE, 15' (4.5 m) TO 24' (600 mm) FROM PAVEMENT EDGE
- 701106-02 OFF-RD OPERATIONS, MULTILANE, MORE THAN 15' (4.5 m) AWAY
- 701427-03 LANE CLOSURE, MULTILANE, INTERMITTENT OR MOVING OPER., FOR SPEEDS
- 701606-10 URBAN LANE CLOSURE, MULTILANE, 2W WITH MOUNTABLE MEDIAN
- 701701-09 URBAN LANE CLOSURE, MULTILANE INTERSECTION
- 701801-05 SIDEWALK, CORNER OR CROSSWALK CLOSURE
- 701901-04 TRAFFIC CONTROL DEVICES
- 814001-03 HANDHOLES



GENERAL NOTES

BEFORE STARTING ANY EXCAVATION, THE CONTRACTOR SHALL CALL "JULIE AT (800) 892-0123 OR 811 FOR FIELD LOCATIONS OF BURIED ELECTRIC, TELEPHONE AND GAS FACILITIES. (48 HOURS NOTIFICATION IS REQUIRED).

THE CONTRACTOR SHALL COORDINATE CONSTRUCTION ACTIVITIES WITH UTILITY COMPANIES AND THE VILLAGE OF WHEELING.

THE CONTRACTOR WILL NOT BE ALLOWED TO SET UP A YARD OR FIELD OFFICE ON STATE PROPERTY WITHOUT WRITTEN PERMISSION FROM THE DEPARTMENT.

BEFORE BEGINNING ANY WORK, THE CONTRACTOR SHALL RETAIN AND RECORD FOR FUTURE REFERENCE, ALL EXISTING PAVEMENT MARKING LINES (AND RAISED REFLECTIVE PAVEMENT MARKERS) IN ORDER THAT THESE LOCATIONS CAN BE RE-ESTABLISHED FOR STRIPING. EXACT LOCATIONS OF ALL PAVEMENT MARKINGS SHALL BE AS DIRECTED BY THE ENGINEER.

THE THICKNESS OF THE HMA MIXTURE SHOWN ON THE PLANS IS THE NOMINAL THICKNESS. DEVIATIONS FROM THE NOMINAL THICKNESS WILL BE PERMITTED WHEN SUCH DEVIATIONS OCCUR DUE TO IRREGULARITIES IN THE EXISTING SURFACE OR BASE ON WHICH THE HMA MIXTURE IS PLACED.

ANY DAMAGE TO EXISTING PAVEMENT MARKINGS OR RAISED REFLECTIVE PAVEMENT MARKERS OUTSIDE THE REMOVAL LINE SHOWN ON THE PLANS SHALL BE REPLACED AT THE CONTRACTOR'S EXPENSE.

ALL PAVEMENT PATCHING LOCATIONS WILL BE DETERMINED IN THE FIELD BY THE ENGINEER.

LOCATION OF COMBINATION CONCRETE CURB AND GUTTER REMOVAL AND REPLACEMENT (OR COMBINATION CURB AND GUTTER, WITH THE TYPE SPECIFIED ON THE PLANS), WILL BE DETERMINED IN THE FIELD BY THE ENGINEER.

DRAINAGE ADJUSTMENT OR RECONSTRUCTION LOCATIONS WILL BE DETERMINED IN THE FIELD BY THE ENGINEER.

FOR FRAMES AND LIDS ADJUSTMENT WITHOUT MILLING, REUSE EXISTING FRAMES AND LIDS UNLESS OTHERWISE SPECIFIED IN THE PLANS.

FRAMES AND GRATES ADJUSTMENT OF PRIVATE UTILITIES WITHIN THE PROJECT LIMITS SHALL BE DONE BY THEIR RESPECTIVE OWNERS AND ARE NOT PART OF THIS CONTRACT.

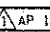
SIDEWALK REMOVAL AND P.C.C. SIDEWALK, 5' LOCATIONS SHALL BE DETERMINED BY THE ENGINEER.

THE CONTRACTOR SHALL CONTACT THE DISTRICT TRAFFIC CONTROL SUPERVISOR AT (847)705-4470 A MINIMUM OF 72 HOURS IN ADVANCE OF BEGINNING WORK.

THE ENGINEER SHALL CONTACT JOE ECKERT, AREA TRAFFIC FIELD ENGINEER (OR TECHNICIAN), AT joe.eckert@illinois.gov A MINIMUM OF TWO (2) WEEKS PRIOR TO THE PLACEMENT OF PERMANENT PAVEMENT MARKINGS.

IT SHALL BE THE CONTRACTOR'S RESPONSIBILITY TO VERIFY ALL DIMENSIONS AND CONDITIONS EXISTING IN THE FIELD PRIOR TO ORDERING MATERIALS AND BEGINNING CONSTRUCTION. THIS SHALL INCLUDE LOCATING THE MAST ARM AND FOUNDATIONS AND VERIFYING THE MAST ARM LENGTHS.

THE CONTRACTOR SHALL BE REQUIRED TO PROVIDE ACCESS TO ADJUTING PROPERTY AT ALL TIMES DURING THE CONSTRUCTION OF THIS PROJECT.

FILE NAME *	USER NAME = perognol	DESIGNED -	REVISED -  12/16/15	STATE OF ILLINOIS DEPARTMENT OF TRANSPORTATION	INDEX OF SHEETS, HIGHWAY STANDARDS & GENERAL NOTES IL. ROUTE 68 AT IL. ROUTE 83 / ELMHURST ROAD	F.A.P. RTE.	SECTION	COUNTY	TOTAL SHEETS	SHEET NO.	
		CHECKED -	REVISED -			343	3D41N-3(12)	COOK	78	2	
		DATE -	REVISED -			SCALE: NONE		SHEET NO. 1 OF 1 SHEETS		STA. TO STA.	
						ILLINOIS FED. AID PROJECT CONTRACT NO. 60V97					

SUMMARY OF QUANTITIES			URBAN CONSTRUCTION TYPE CODE			
CODE NO	ITEM	UNIT	TOTAL QUANTITIES	0004 80% FED 20% STATE STATE URBAN	0021 80% FED 20% STATE TRAFFIC SIGNALS	0021 100% WHEELING EVP
20100110	TREE REMOVAL (6 TO 15 UNITS DIAMETER)	UNIT	45	45		
20100210	TREE REMOVAL (OVER 15 UNITS DIAMETER)	UNIT	20	20		
20101000	TEMPORARY FENCE	FOOT	513	513		
20101100	TREE TRUNK PROTECTION	EACH	6	6		
20200100	EARTH EXCAVATION	CU YD	983	983		
20201200	REMOVAL AND DISPOSAL OF UNSUITABLE MATERIAL	CU YD	167	167		
20800150	TRENCH BACKFILL	CU YD	253	253		
21101505	TOPSOIL EXCAVATION AND PLACEMENT	CU YD	232	232		
21101625	TOPSOIL FURNISH AND PLACE, 6"	SO YD	388	388		
25000400	NITROGEN FERTILIZER NUTRIENT	POUND	16	16		
25000500	PHOSPHORUS FERTILIZER NUTRIENT	POUND	16	16		
25000600	POTASSIUM FERTILIZER NUTRIENT	POUND	16	16		
25200110	SODDING, SALT TOLERANT	SO YD	1271	1271		
25200200	SUPPLEMENTAL WATERING	UNIT	13	13		
28000400	PERIMETER EROSION BARRIER	FOOT	211	211		

SUMMARY OF QUANTITIES			URBAN CONSTRUCTION TYPE CODE			
CODE NO	ITEM	UNIT	TOTAL QUANTITIES	0004 80% FED 20% STATE STATE URBAN	0021 80% FED 20% STATE TRAFFIC SIGNALS	0021 100% WHEELING EVP
28000510	INLET FILTERS	EACH	15	15		
30300112	AGGREGATE SUBGRADE IMPROVEMENT 12"	SQ YD	1260	1260		
35501316	HOT-MIX ASPHALT BASE COURSE, 8"	SQ YD	435	435		
40600400	MIXTURE FOR CRACKS, JOINTS, AND FLANGEWAYS	TON	10	10		
40603335	HOT-MIX ASPHALT SURFACE COURSE, MIX "D", N50	TON	49	49		
42000416	PORTLAND CEMENT CONCRETE PAVEMENT 9 3/4" (JOINTED)	SQ YD	869	869		
42001200	PAVEMENT FABRIC	SO YD	869	869		
42101300	PROTECTIVE COAT	SO YD	1261	1261		
42300400	PORTLAND CEMENT CONCRETE DRIVEWAY PAVEMENT, 8 INCH	SQ YD	261	261		
42400200	PORTLAND CEMENT CONCRETE SIDEWALK 5 INCH	SO FT	4598	4598		
42400410	PORTLAND CEMENT CONCRETE SIDEWALK 8 INCH	SO FT	1461	1461		
44000200	DRIVEWAY PAVEMENT REMOVAL	SQ YD	408	408		
44000400	GUTTER REMOVAL	FOOT	455	455		

SUMMARY OF QUANTITIES			URBAN CONSTRUCTION TYPE CODE			
CODE NO	ITEM	UNIT	TOTAL QUANTITIES	0004 80% FED 20% STATE STATE URBAN	0021 80% FED 20% STATE TRAFFIC SIGNALS	0021 100% WHEELING EVP
X4022000	TEMPORARY ACCESS (COMMERCIAL ENTRANCE)	EACH	7	7		
X5537800	STORM SEWERS TO BE CLEANED 12"	FOOT	100	100		
X6020094	MANHOLES, TYPE A, 6' -DIAMETER, TYPE 1 FRAME, CLOSED LID, RESTRICTOR PLATE	EACH	1	1		
X7010216	TRAFFIC CONTROL AND PROTECTION, (SPECIAL)	L SUM	1	1		
X7030025	WET REFLECTIVE TEMPORARY TAPE, TYPE III - LETTERS AND SYMBOLS	SO FT	292	292		
X7030030	WET REFLECTIVE TEMPORARY TAPE TYPE III, 4 INCH	FOOT	3854	3854		
X7030040	WET REFLECTIVE TEMPORARY TAPE TYPE III, 6 INCH	FOOT	2545	2545		
X7030050	WET REFLECTIVE TEMPORARY TAPE TYPE III, 12 INCH	FOOT	67	67		
X7030055	WET REFLECTIVE TEMPORARY TAPE TYPE III, 24 INCH	FOOT	186	186		
X8620200	UNINTERRUPTABLE POWER SUPPLY, SPECIAL	EACH	1		1	
X8710024	FIBER OPTIC CABLE IN CONDUIT, NO. 62.5/125, MM12F SM24F	FOOT	6892		6892	
X0007510	ENGINEERED BARRIER	SO YD	70	70		

SUMMARY OF QUANTITIES			URBAN CONSTRUCTION TYPE CODE			
CODE NO	ITEM	UNIT	TOTAL QUANTITIES	0004 80% FED 20% STATE STATE URBAN	0021 80% FED 20% STATE TRAFFIC SIGNALS	0021 100% WHEELING EVP
Z0013798	CONSTRUCTION LAYOUT	LSUM	1	1		
Z0030850	TEMPORARY INFORMATION SIGNING	SO FT	102.8	102.8		
Z0033046	RE-OPTIMIZE TRAFFIC SIGNAL SYSTEM LEVEL 2	EACH	1		1	
Z0056668	STORM SEWERS, TYPE 2, WATER MAIN -QUALITY PIPE, 12"	FOOT	50	50		
Z0056672	STORM SEWERS, TYPE 2, WATER MAIN QUALITY PIPE, 24"	FOOT	158	158		
Z0073510	TEMPORARY TRAFFIC SIGNAL TIMING	EACH	1		1	

NON-PARTICIPATING

*-SPECIALTY ITEMS

FILE NAME :	USER NAME = STREATERJR	DESIGNED -	REVISED -
OFFICE: 21101101	PROJECTS: P12492 CAD0000	CHECKED -	REVISED -
PLOT SCALE = 1000000 / 1"		DATE -	REVISED -
PLOT DATE = 01/22/2015			

STATE OF ILLINOIS
DEPARTMENT OF TRANSPORTATION

SUMMARY OF QUANTITIES

SCALE: SHEET NO. OF SHEETS STA. TO STA.

F.A. RTE.	SECTION	COUNTY	TOTAL SHEETS	SHEET NO.
343	3041N-3 (12)	COOK	78	8
FED. ROAD DIST. NO. 1 ILLINOIS FED. AID PROJECT			CONTRACT NO. 60V97	

EARTHWORK SCHEDULE

1 LOCATION	2 EARTH EXCAVATION (CU. YD)	3 UNSUITABLE OR UNSTABLE MATERIAL (CU. YD)	4 EARTH EXCAVATION ADJUSTED FOR 15% SHRINKAGE (CU. YD)	5 EMBANKMENT (CU. YD)	6 EARTHWORK BALANCE WASTE (+) OR SHORTAGE (-) (CU. YD)	7 TOPSOIL EXCAVATION AND PLACEMENT (CU. YD)	8 TOPSOIL FURNISH AND PLACE, 6" (SQ. YD)
IL. RTE. 68 (WEST LEG)	387	99	329	11	318	139	238
IL. RTE. 68 (EAST LEG)	76	24	65	0	65	32	50
IL. RTE. 83 (SOUTH LEG)	0	0	0	0	0	0	0
IL. RTE. 68 (NORTH LEG)	520	44	442	0	442	61	100
TOTAL	983	167	836	11	825	232	388

COLUMNS 1, 2, & 4 LOCATION AND QUANTITIES FROM CROSS SECTIONS:
CUT = EARTH EXCAVATION, FILL = EMBANKMENT

COLUMN 3 QUANTITY OF EARTH EXCAVATION (CUT) ADJUSTED FOR SHRINKAGE FACTOR OF 15%.

COLUMN 5 EARTHWORK REQUIRED:
(-) = QUANTITY OF FILL OR EMBANKMENT NEEDED (FURNISHED OR BORROW EXCAVATION)
(+) = QUANTITY TO BE WASTED.

HOT-MIX ASPHALT MIXTURE REQUIREMENTS

THE FOLLOWING MIXTURE REQUIREMENTS ARE APPLICABLE FOR THIS PROJECT

MIXTURE TYPE	AIR VOIDS (%) @ Ndes	OMP
PARKING LOT		
HMA SURFACE COURSE MIX "D", N50, (IL-9.5mm), 2"	4% @ 50 CYR.	OC / OA

OMP Designation: Quality Control/Quality Assurance (OC/OA); Quality Control for Performance (QCP).

NOTES:

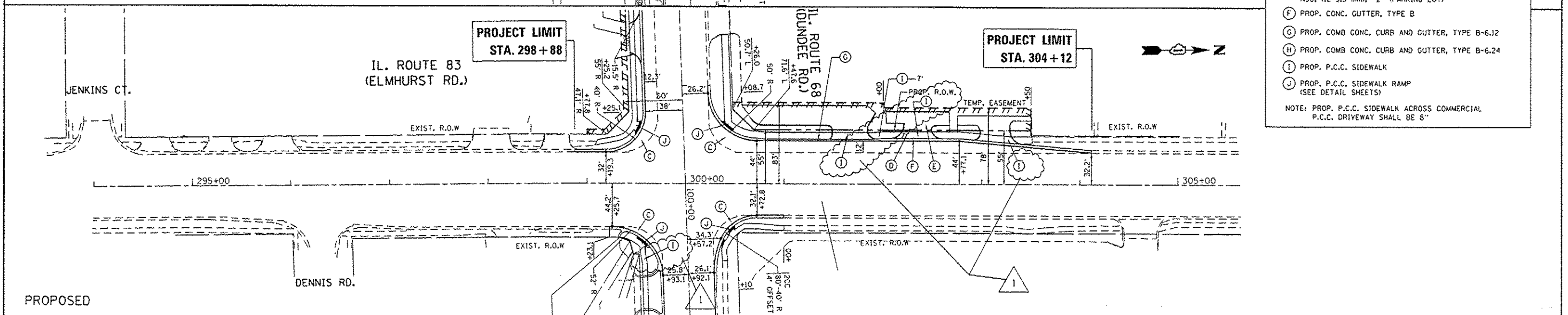
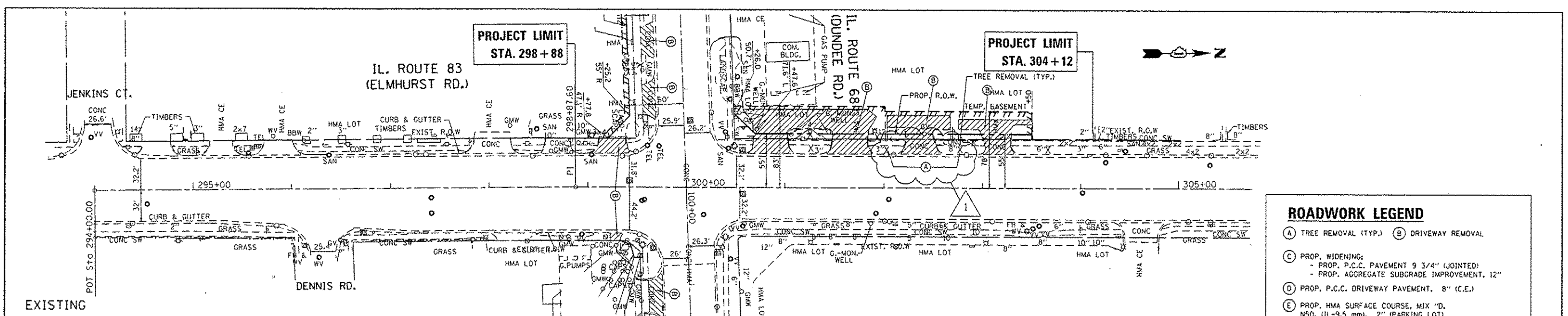
THE UNIT WEIGHT USED TO CALCULATE ALL HMA SURFACE MIXTURE QUANTITIES IS 112 LBS/SQ YD/IN.
FOR NON-POLYMERIZED HMA THE "AC TYPE" SHALL BE "PG 64-22" UNLESS MODIFIED BY DISTRICT ONE SPECIAL PROVISIONS.
FOR USE OF RECYCLED MATERIALS SEE SPECIAL PROVISIONS. QUALITY MANAGEMENT PROGRAM (QMP) IDENTIFIES THE PARTICULAR QUALITY CONTROL SPECIFICATION THAT APPLIES TO THE MIXTURE.

TREE REMOVAL SCHEDULE

ROADWAY	STATION AND OFFSET	6 TO 15 UNITS	OVER 15 UNITS
IL. RTE. 68 / DUNDEE ROAD	97+03 / 46.2 RT	6	
	97+64.4 / 32.8 RT	7	
	98+02.8 / 32.7 RT	6	
	98+74.0 / 42.7 RT		20
IL. RTE. 83 / ELMHURST ROAD	302+02.6 / 39 LT	12	
IL. RTE. 83 / ELMHURST ROAD	302+76.8 / 39.4 LT	8	
IL. RTE. 83 / ELMHURST ROAD	303+66.5 / 39.6 LT	6	
TOTAL:		45	20

DATE	
BY	
REVISIONS	
NO.	
DESCRIPTION	
DATE	
BY	
PLANNING	
NO.	
DESCRIPTION	
DATE	
BY	
NO.	
DESCRIPTION	
DATE	
BY	

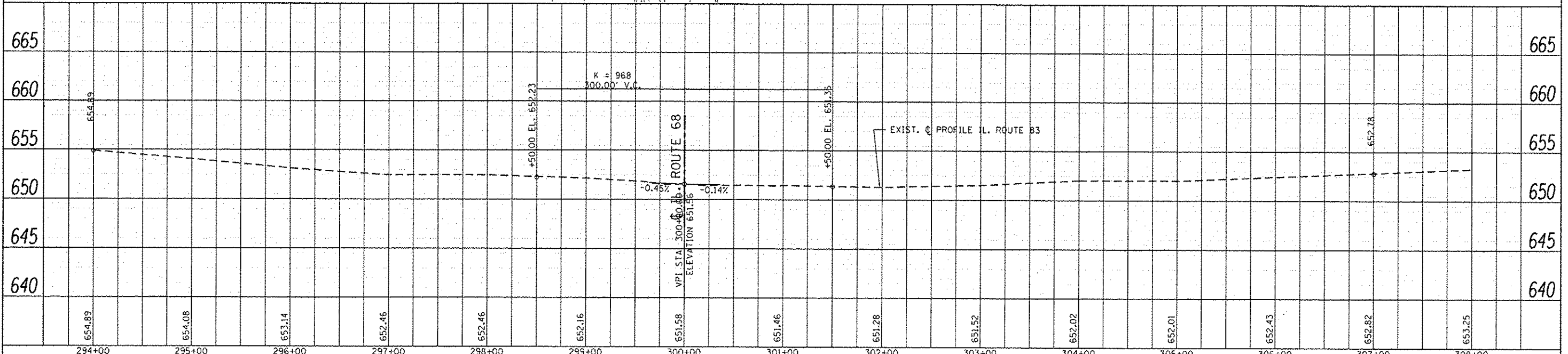
DATE	
BY	
REVISIONS	
NO.	
DESCRIPTION	
DATE	
BY	
NO.	
DESCRIPTION	
DATE	
BY	
NO.	
DESCRIPTION	
DATE	
BY	



ROADWORK LEGEND

- (A) TREE REMOVAL (TYP.)
- (B) DRIVEWAY REMOVAL
- (C) PROP. WIDENING:
 - PROP. P.C.C. PAVEMENT 9 3/4" (JOINTED)
 - PROP. AGGREGATE SUBGRADE IMPROVEMENT, 12"
- (D) PROP. P.C.C. DRIVEWAY PAVEMENT, 8" (C.E.)
- (E) PROP. HMA SURFACE COURSE, MIX 'D, NSO, (IL-9.5 mm), 2" (PARKING LOT)
- (F) PROP. CONC. GUTTER, TYPE B
- (G) PROP. COMB CONC. CURB AND GUTTER, TYPE B-6.12
- (H) PROP. COMB CONC. CURB AND GUTTER, TYPE B-6.24
- (I) PROP. P.C.C. SIDEWALK
- (J) PROP. P.C.C. SIDEWALK RAMP (SEE DETAIL SHEETS)

NOTE: PROP. P.C.C. SIDEWALK ACROSS COMMERCIAL P.C.C. DRIVEWAY SHALL BE 8"



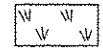
FILE NAME	USER NAME	DESIGNED	REVISOR	STATE OF ILLINOIS	ROADWAY PLAN & PROFILE	F.A.P. RTE.	SECTION	COUNTY	TOTAL SHEETS	SHEET NO.
Default	perapool	AP 12/16/15	REVISOR	DEPARTMENT OF TRANSPORTATION	IL. ROUTE 68 (DUNDEE RD.) AT IL. ROUTE 83 (ELMHURST RD.)	343	304IN-3 (12)	COOK	78	16
	PLT SCALE = 100.0000' / in.	CHECKED	REVISOR		SCALE: 1"=50'	SHEET	OF	SHEETS	STA.	TO STA.
	PLT DATE = 12/17/2015	DATE	REVISOR							
										ILLINOIS FED. AID PROJECT

NORTHWEST CORNER

ROADSIDE WORK LEGEND



DETECTABLE WARNING



LANDSCAPING

② — SIDE CURB

③ — RAMP SIDE FLARE
(CROSS SLOPE = 10% MAX)

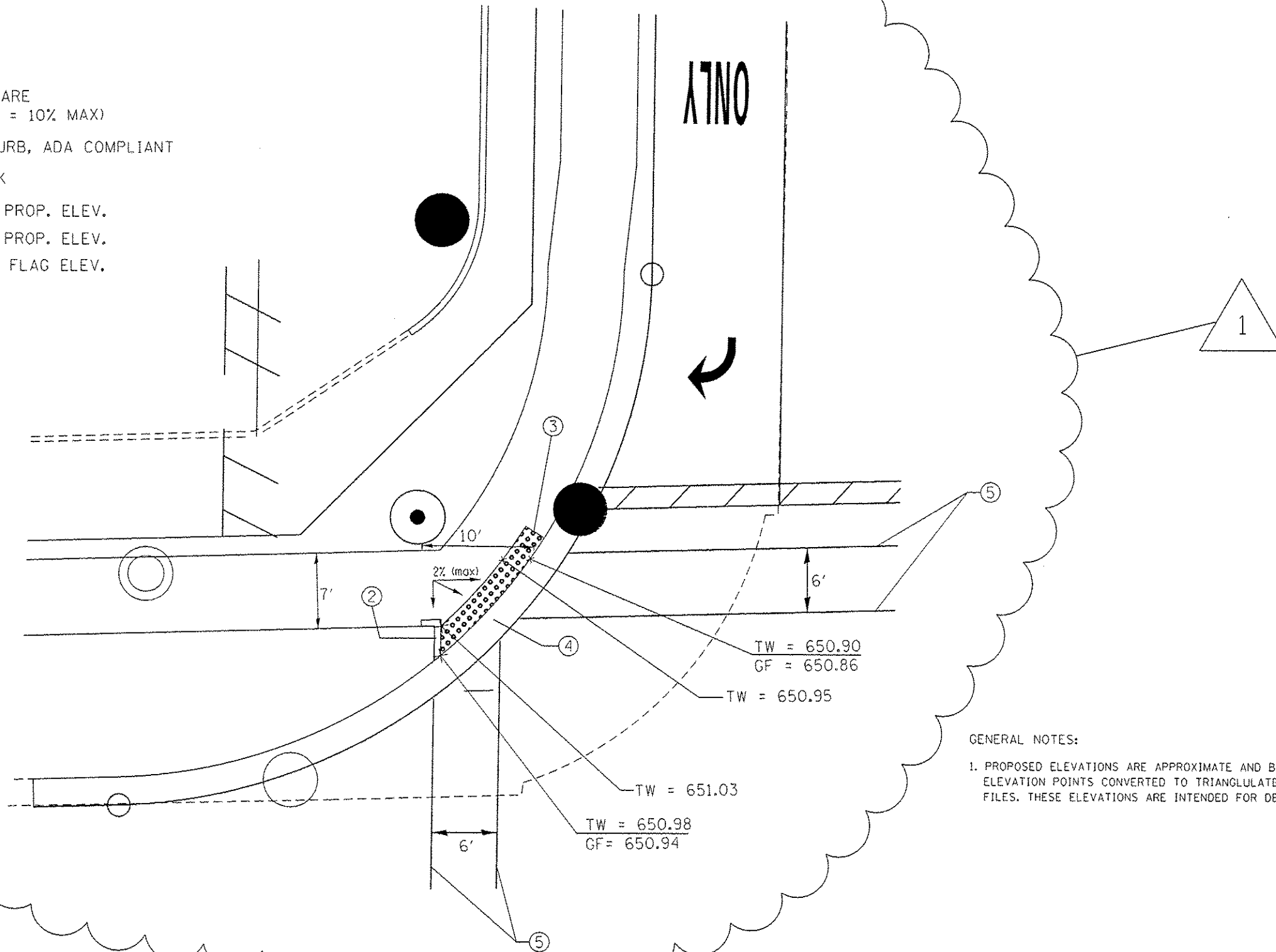
④ — DEPRESSED CURB, ADA COMPLIANT

⑤ — 6" CROSSWALK

TW — TOP OF WALK PROP. ELEV.

TC — TOP OF CURB PROP. ELEV.

GF — PROP. GUTTER FLAG ELEV.



GENERAL NOTES:

1. PROPOSED ELEVATIONS ARE APPROXIMATE AND BASED ON PHASE ONE SURVEY ELEVATION POINTS CONVERTED TO TRIANGULATED IRREGULAR NETWORK (TIN) FILES. THESE ELEVATIONS ARE INTENDED FOR DESIGN PURPOSES ONLY.

FILE NAME :	USER NAME : parajmpol	DESIGNED -	REVISED -	STATE OF ILLINOIS DEPARTMENT OF TRANSPORTATION	IL ROUTE 68 AT IL ROUTE 83 /ELMHURST ROAD SIDEWALK DETAIL	F.A.P. RTE.	SECTION	COUNTY	TOTAL SHEETS	SHEET NO.
			AP 12/16/15			343	3041N-3112)	COOK	78	17
		CHECKED -	REVISED -		SCALE: NONE	SHEET NO. 1 OF 1 SHEETS	STA.	TO STA.	CONTRACT NO. 60V97	
		DATE -	REVISED -		ILLINOIS FED. AID PROJECT					



ROADSIDE WORK LEGEND

DETECTABLE WARNING

LANDSCAPING

② — SIDE CURB

③ — RAMP SIDE FLARE
(CROSS SLOPE = 10% MAX)

④ — DEPRESSED CURB, ADA COMPLIANT

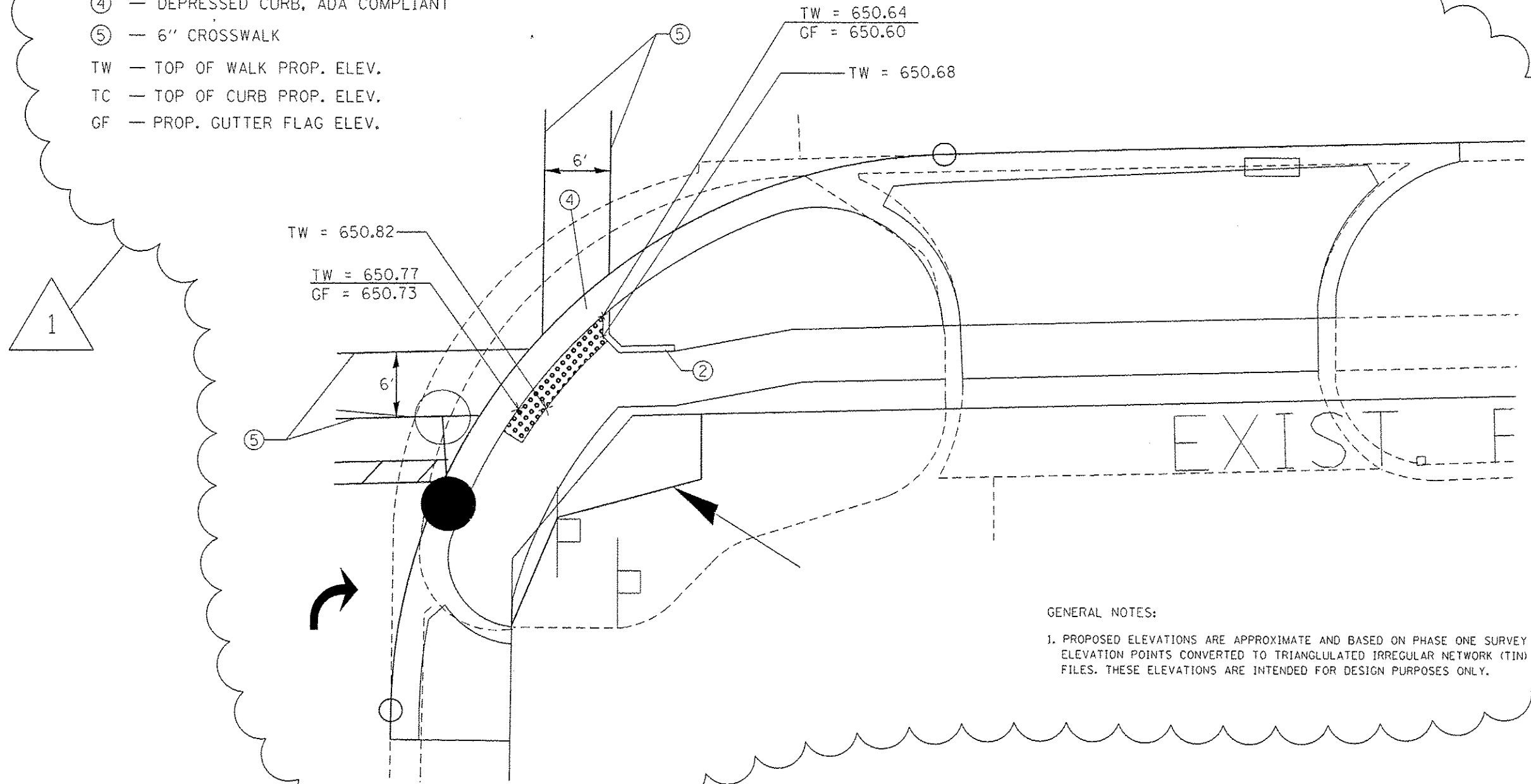
⑤ — 6" CROSSWALK

TW — TOP OF WALK PROP. ELEV.

TC — TOP OF CURB PROP. ELEV.

GF — PROP. GUTTER FLAG ELEV.

SOUTHEAST CORNER

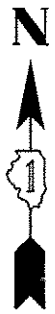


GENERAL NOTES:


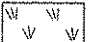
1. PROPOSED ELEVATIONS ARE APPROXIMATE AND BASED ON PHASE ONE SURVEY ELEVATION POINTS CONVERTED TO TRIANGULATED IRREGULAR NETWORK (TIN) FILES. THESE ELEVATIONS ARE INTENDED FOR DESIGN PURPOSES ONLY.

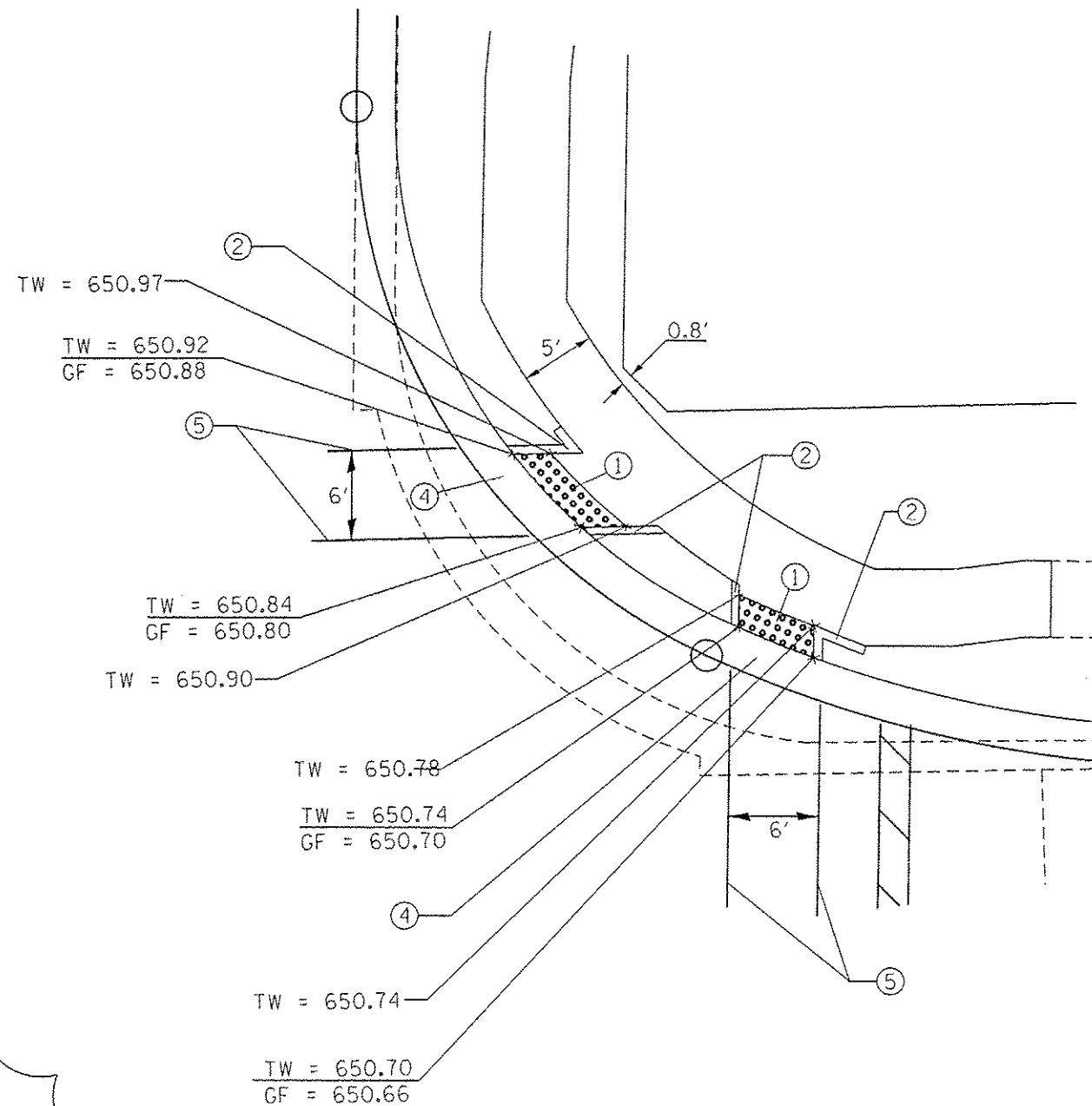
FILE NAME =	USER NAME = parygnol	DESIGNED -	REVISIONS -	STATE OF ILLINOIS DEPARTMENT OF TRANSPORTATION	IL. ROUTE 68 AT IL. ROUTE 83 /ELMHURST ROAD SIDEWALK DETAIL	F.A.P. RTE.	SECTION	COUNTY	TOTAL SHEETS	SHEET NO.	
p:\N\1684E8ID\INTEG\Illinois.gov\PIDOT\Documents\100T Of Files\District 1\Projects\PI24812\Design\PI24812-shr-gennote.dgn	DATE = 12/16/15	CHECKED -	REVISIONS -			343	304IN-3(12)	COOK	78	19	
PLOT SCALE = 10.6408 1/ in.	DATE -	REVISIONS -	REVISIONS -			CONTRACT NO. 60V97		[ILLINOIS] FED. AID PROJECT			
PLOT DATE = 12/17/2015	DATE -	REVISIONS -	REVISIONS -			SCALE: NONE	SHEET NO. 1 OF 1 SHEETS	STA.	TO STA.		

NORTHEAST CORNER



ROADSIDE WORK LEGEND

-  DETECTABLE WARNING
-  LANDSCAPING
- ② — SIDE CURB
- ③ — RAMP SIDE FLARE
(CROSS SLOPE = 10% MAX)
- ④ — DEPRESSED CURB, ADA COMPLIANT
- ⑤ — 6" CROSSWALK
- TW — TOP OF WALK PROP. ELEV.
- TC — TOP OF CURB PROP. ELEV.
- GF — PROP. GUTTER FLAG ELEV.



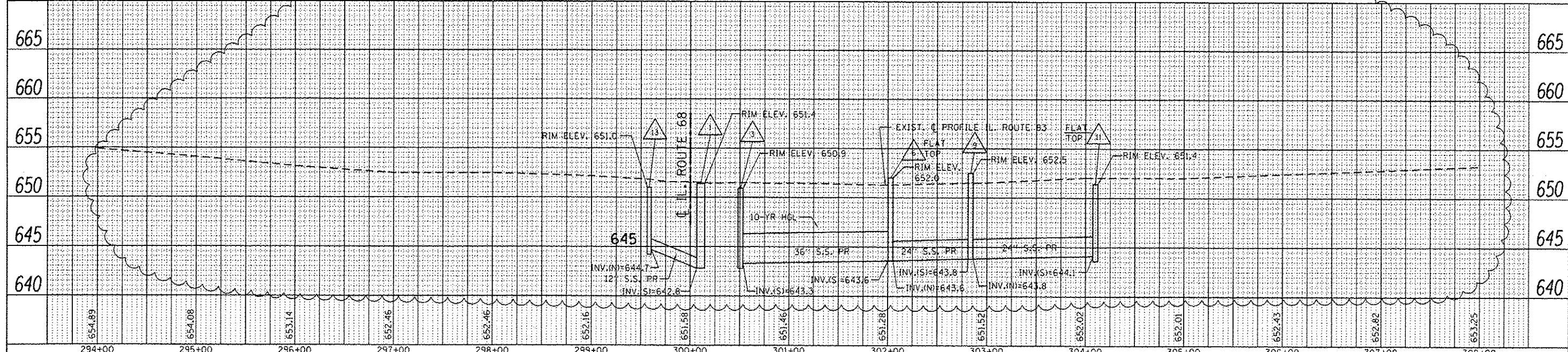
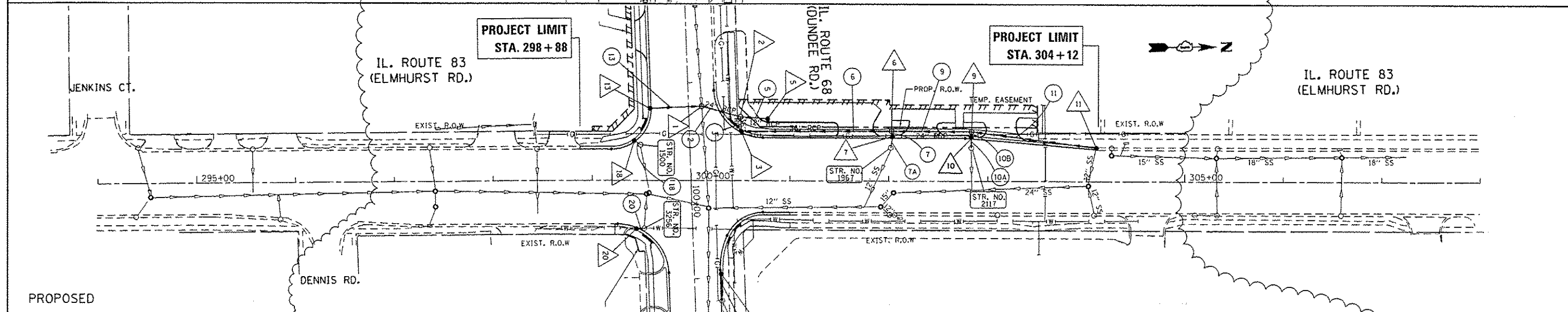
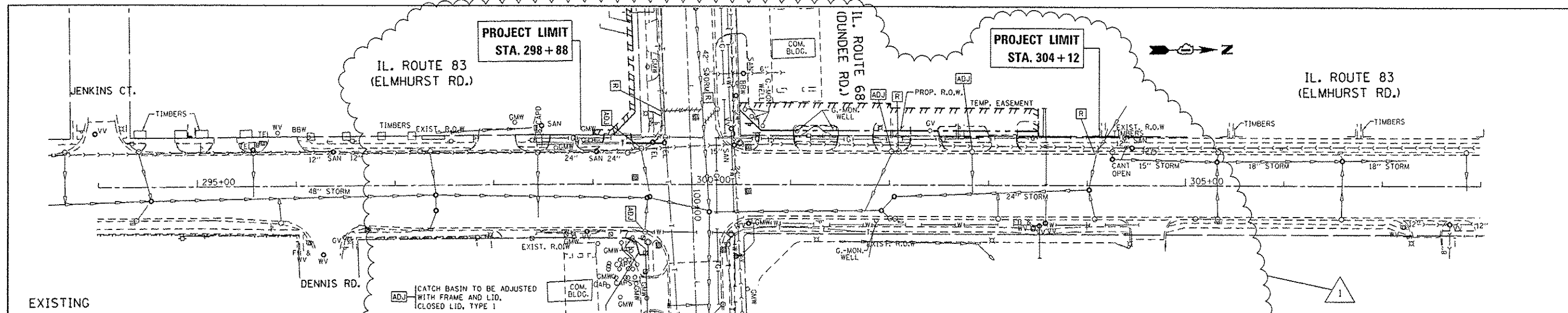
GENERAL NOTES:

1. PROPOSED ELEVATIONS ARE APPROXIMATE AND BASED ON PHASE ONE SURVEY ELEVATION POINTS CONVERTED TO TRIANGULATED IRREGULAR NETWORK (TIN) FILES. THESE ELEVATIONS ARE INTENDED FOR DESIGN PURPOSES ONLY.

FILE NAME * pww\11084EBID\INTEG\11084EBID\007\00	USER NAME * parayncol	DESIGNED - AP 12/16/15	REVISED - AP 12/16/15	STATE OF ILLINOIS DEPARTMENT OF TRANSPORTATION	IL. ROUTE 68 AT IL. ROUTE 83 /ELMHURST ROAD SIDEWALK DETAIL		F.A.P. RTE. 343	SECTION 304IN-3121	COUNTY COOK	TOTAL SHEETS 78	SHEET NO. 20	
PLOT SCALE * 1/8" = 1' / in.					CHECKED -	REVISED -	CONTRACT NO. 60V97		ILLINOIS FED. AID PROJECT			
PLOT DATE * 12/17/2015					DATE -	REVISED -	SCALE: NONE	SHEET NO. 1 OF 1 SHEETS	STA.	TO STA.		

DATE	
BY	
REVISION	
NO.	
DESCRIPTION	
DATE	
BY	
REVISION	
NO.	
DESCRIPTION	
DATE	
BY	
REVISION	
NO.	
DESCRIPTION	
DATE	
BY	
REVISION	
NO.	
DESCRIPTION	

DATE	
BY	
REVISION	
NO.	
DESCRIPTION	
DATE	
BY	
REVISION	
NO.	
DESCRIPTION	
DATE	
BY	
REVISION	
NO.	
DESCRIPTION	
DATE	
BY	
REVISION	
NO.	
DESCRIPTION	



FILE NAME =	USER NAME =	DESIGNED -	REVISOR -	STATE OF ILLINOIS DEPARTMENT OF TRANSPORTATION		DRAINAGE PLAN & PROFILE IL. ROUTE 68 (DUNDEE RD.) AT IL. ROUTE 83 (ELMHURST RD.)		F.A.P. RTE. =	SECTION	COUNTY	TOTAL SHEETS
Default	parahnoal	AP 12/16/15	REVISOR -			SCALE: 1"=50'		343	304IN-3 (12)	COOK	78 27
	PLOT SCALE = 100.0000 / in.	CHECKED -	REVISOR -			SHEET OF SHEETS STA. TO STA.					
	PLOT DATE = 12/17/2015	DATE -	REVISOR -								CONTRACT NO. 60V97
											ILLINOIS FED. AID PROJECT

DRAINAGE STRUCTURES AND STORM SEWER TABLE

DRAINAGE STRUCTURES

- 1 99+24.5 / 13.4 LT (DUNDEE RD)
MH, TYP. A 8' DIA. W/ F&G CL. TYPE 1
T.O.G. = 651.4
INV.(W) = 642.7 (EXIST.)
INV.(E) = 642.7 (EXIST.)
INV.(S) = 642.8
INV.(N) = 642.8
- FLAT TOP 2 99+36.7 / 52.1 LT (DUNDEE RD)
MH, TYP. A 6' DIA. W/ F&G CL. TYPE 1
T.O.G. = 652.2
INV.(S) = 643.0
RESTRICTOR #1 (PLATE RESTRICTOR INV. = 643.00')
INV.(N) = 643.1 INV.(W) = 643.1
NOTE: SEE RESTRICTOR DETAIL SHEET AND DISTRICT DETAIL BD-12 FOR OTHER ELEVATIONS AND REQUIREMENTS
- FLAT TOP 3 300+50.3 / 49.3 LT (ELMHURST RD)
CB, TYP. A 5' DIA. W/ F&G TYPE 24
T.O.G. = 650.9
INV.(S) = 643.1 INV.(N) = 643.3
INV.(W) = 643.2
- 5 300+77.3 / 63.3 LT (ELMHURST RD)
CB, TYP. A 4' DIA. W/ F&G OL. TYPE 1
T.O.G. = 652.5
INV.(E) = 644.0
- FLAT TOP 6 302+02.8 / 50.9 LT (ELMHURST RD)
MH, TYP. A 5' DIA. W/ F&G OL. TYPE 1
T.O.G. = 652.0
INV.(S) = 643.6 INV.(E) = 646.8
INV.(N) = 643.6
- FLAT TOP 7 302+03.9 / 44.0 LT (ELMHURST RD)
CB, TYP. C, 2' DIA. W/ F&G CL. TYPE 24
T.O.G. = 650.7
INV.(W) = 646.9 INV.(E) = 647.0
- EXIST. STR. NO. 1967 302+02.0 / 34.1 LT (ELMHURST RD)
CB (EXISTING; ADJ. FRAME&GRATE, REPLACE LID WITH CL TYPE 1)
T.O.G. = 650.74
INV.(W) = 647.4 (PROP.)
INV.(N) = 647.8 (EXIST.)
INV.(E) = 647.6 (EXIST.)
- 9 302+83.6 / 50.6 LT (ELMHURST RD)
MH, TYP. A 5' DIA. W/ F&G CL. TYPE 1
T.O.G. = 652.5
INV.(S) = 643.8 INV.(N) = 643.8
INV.(E) = 645.3
- FLAT TOP 10 302+83.4 / 43.5 LT (ELMHURST RD)
CB, TYP. C 2' DIA. W/ F&G TYP. 24
T.O.G. = 650.9
INV.(E) = 645.4 INV.(W) = 645.5
- EXIST. STR. NO. 2117 302+83.4 / 32.0 LT (ELMHURST RD)
CB (EXISTING; ADJ. FRAME&GRATE, REPLACE LID WITH CL TYPE 1)
T.O.G. = 650.79
INV.(E) = 645.8 (PROP.)
INV.(W) = 646.0 (EXIST.)
- FLAT TOP 11 304+10.0 34.4 LT (ELMHURST RD)
CB, TYP. A 5' DIA. W/ F&G TYP. 24
T.O.G. = 651.4
INV.(W) = 647.4 (EXIST.)
INV.(E) = 647.4 (EXIST.)
INV.(S) = 644.1
- 13 99+25.1 / 38.0 RT (DUNDEE RD)
CB, TYP. A 4' DIA. W/ F&G TYPE 24
T.O.G. = 651
INV.(N) = 644.7
- 14 97+83.2 / 11.2 RT (DUNDEE RD)
MH, TYP. A 6' DIA. W/ F&G CL. TYP. 1
T.O.G. = 651.5
INV.(E) = 643.1 (EXIST.)
INV.(W) = 643.1 (EXIST.)
INV.(S) = 643.7
- 15 97+81.8 / 38 RT (DUNDEE RD)
CB, TYP. A 4' DIA. W/ F&G TYP. 24
T.O.G. = 651.2
INV.(N) = 645.0 INV.(S) = 645.3
- 16 97+80.7 / 54.7 RT (DUNDEE RD)
CB, TYP. A 4' DIA. W/ F&G OL. TYP. 1
T.O.G. = 650.6
INV.(N) = 645.5
- EXIST. STR. NO. 1500 299+49 / 36.4 LT (ELMHURST RD)
CB (EXISTING; ADJ. FRAME&GRATE, REPLACE LID WITH CL TYPE 1)
T.O.G. = 651.3
INV.(E) = 647.7 (EXIST.)
INV.(W) = 647.9

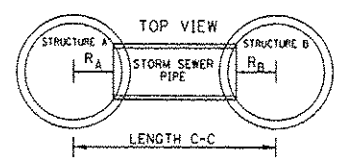
- FLAT TOP 18 299+42.5 / 39.4 LT (ELMHURST RD)
CB, TYP. A 4' DIA. W/ F&G TYP. 24
T.O.G. = 651.3
INV.(E) = 648
- EXIST. STR. NO. 3256 299+52.7 / 48.5 RT (ELMHURST RD)
CB (EXISTING; ADJ. FRAME&GRATE, REPLACE LID WITH CL TYPE 1)
T.O.G. = 650.9
INV.(W) = 645.5 (EXIST.)
INV.(S) = 645.7
- 20 299+44.7 / 47.7 RT (ELMHURST RD)
CB, TYP. A 4' DIA. W/ F&G OL. TYP. 1
T.O.G. = 651.4
INV.(N) = 645.8
- EXIST. STR. NO. 3349 101+23.6 / 27.2 LT (DUNDEE RD)
CB (EXISTING, TO REMAIN)
T.O.G. = 650.2
INV.(E) = 646.6 (EXIST.)
INV.(W) = 646.8 (EXIST.)
- FLAT TOP 22 100+96.2 / 26.1 LT (DUNDEE RD)
CB, TYP. A 4' DIA. W/ F&G TYP. 24
T.O.G. = 650.5
INV.(N) = 647

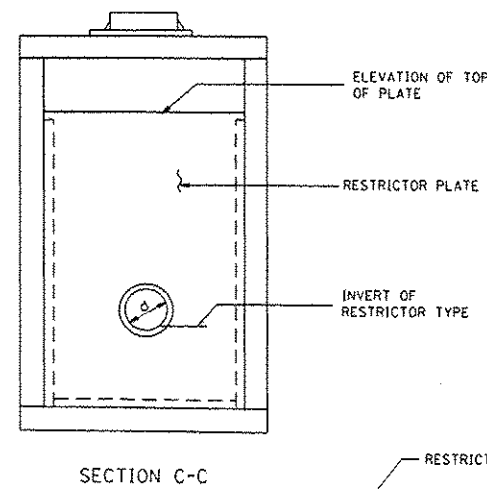
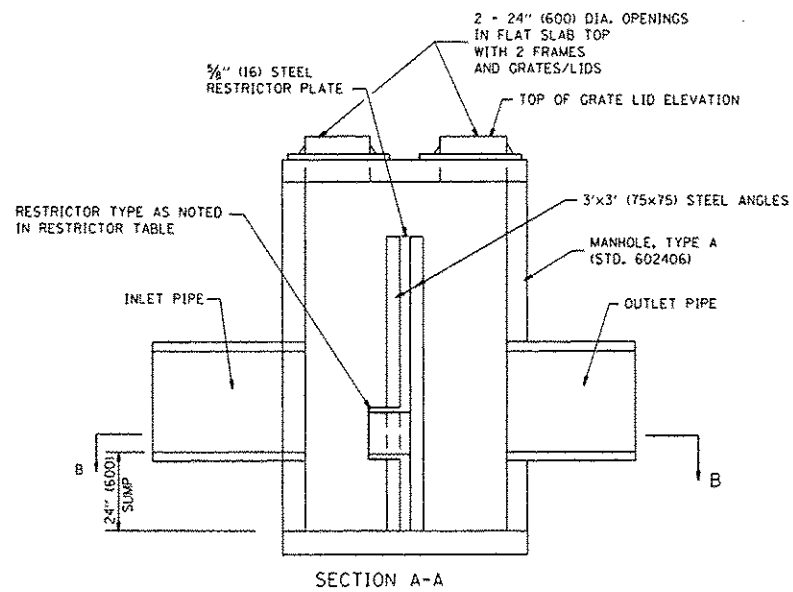
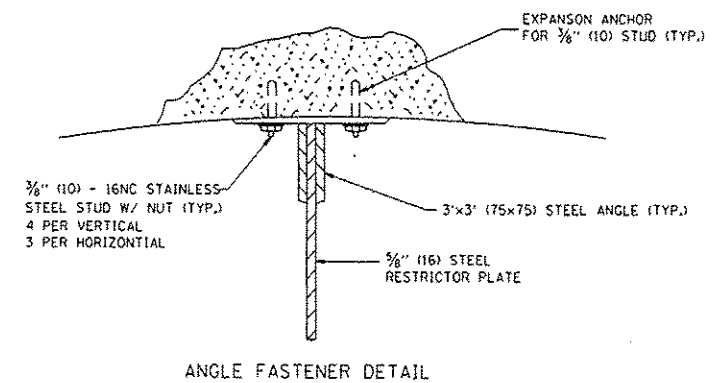
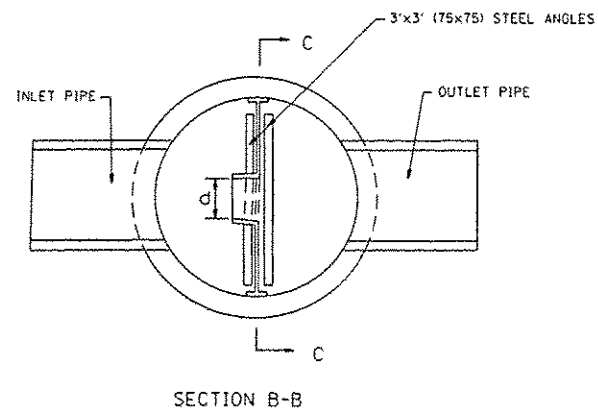
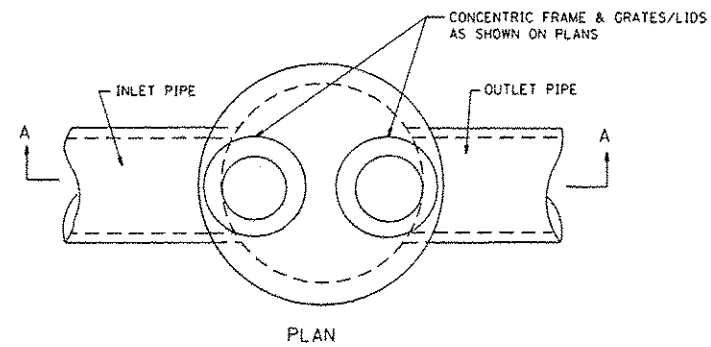
NOTE:
STORM SEWER OFFSET LOCATIONS GIVEN ON THE DETAIL PLANS ARE TO THE FOLLOWING POINTS:
A) STRUCTURES FALLING WITHIN THE CURB LINE ARE MEASURED TO THE EDGE OF PAVEMENT.
B) ALL OTHER STRUCTURES ARE MEASURED TO THE CENTER OF THE STRUCTURE.

ALL PIPE UNDERDRAINS SHALL BE PLACED AT A DEPTH OF 30" BELOW THE TOP OF PROPOSED PAVEMENT OR AS DEEP AS POSSIBLE AND IN ACCORDANCE WITH CHECK SHEET # 19 OF THE SUPPLEMENTAL SPECIFICATIONS AND RECURRING SPECIAL PROVISIONS. THE COST OF MAKING PIPE UNDERDRAINS CONNECTIONS TO DRAINAGE STRUCTURES SHALL BE INCLUDED IN THE COST OF THE PROPOSED PIPE UNDERDRAINS.

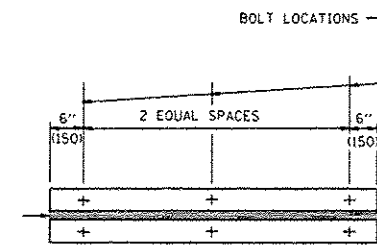
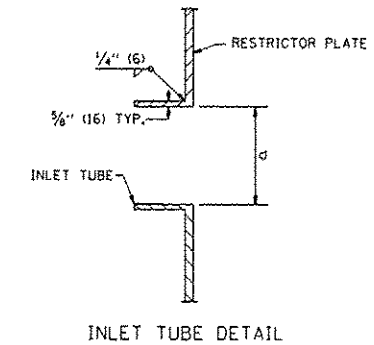
PIPE LOCATION: STRUCTURE (DOWNSTREAM) TO STRUCTURE (UPSTREAM)	ADJUSTED LENGTH	STORM SEWER PIPES	
		PIPE LOCATION: STRUCTURE (DOWNSTREAM) TO STRUCTURE (UPSTREAM)	PIPE LOCATION: STRUCTURE (DOWNSTREAM) TO STRUCTURE (UPSTREAM)
1 TO FLAT TOP 2	34.1'	2	PROP. STORM SEWER, CLASS A, TYPE 2, WATER MAIN QUALITY PIPE, 24" TRENCH BACK FILL = 39.8 CUBIC YARDS
FLAT TOP 2 TO FLAT TOP 3	10.8'	3	PROP. STORM SEWER, CLASS A, TYPE 2, 36" TRENCH BACK FILL = 15.9 CUBIC YARDS
FLAT TOP 2 TO 5	22.8'	5	PROP. STORM SEWER, CLASS A, TYPE 2, 12" TRENCH BACK FILL = 0 CUBIC YARD
FLAT TOP 3 TO FLAT TOP 6	148.7'	6	PROP. STORM SEWER, CLASS A, TYPE 2, 36" TRENCH BACK FILL = 213 CUBIC YARDS
FLAT TOP 6 TO FLAT TOP 7	2.5'	7	PROP. STORM SEWER, CLASS A, TYPE 2, 12" TRENCH BACK FILL = 1 CUBIC YARD
FLAT TOP 7 TO EXIST. STR. NO. 1967	10.1'	7A	PROP. STORM SEWER, CLASS A, TYPE 2, 12" TRENCH BACK FILL = 2.3 CUBIC YARDS
FLAT TOP 6 TO 9	76.5'	9	PROP. STORM SEWER, CLASS A, TYPE 2, 24" TRENCH BACK FILL = 98.7 CUBIC YARDS
FLAT TOP 9 TO FLAT TOP 10	2.6'	10B	PROP. STORM SEWER, CLASS A, TYPE 2, 12" TRENCH BACK FILL = 2.2 CUBIC YARDS
FLAT TOP 10 TO EXIST. STR. NO. 2117	9.3'	10A	PROP. STORM SEWER, CLASS A, TYPE 2, 12" TRENCH BACK FILL = 5.8 CUBIC YARDS
FLAT TOP 9 TO FLAT TOP 11	123.1'	11	PROP. STORM SEWER, CLASS A, TYPE 2, WATER MAIN QUALITY PIPE, 24" TRENCH BACK FILL = 122.4 CUBIC YARDS
1 TO 13	46.7'	13	PROP. STORM SEWER, CLASS A, TYPE 2, 12" TRENCH BACK FILL = 45.7 CUBIC YARDS
14 TO 15	44'	15	PROP. STORM SEWER, CLASS A, TYPE 2, 12" TRENCH BACK FILL = 40.6 CUBIC YARDS
15 TO 16	12.8'	16	PROP. STORM SEWER, CLASS A, TYPE 2, 12" TRENCH BACK FILL = 9.6 CUBIC YARDS
EXIST. STR. NO. 1500 TO FLAT TOP 18	3.8'	18	PROP. STORM SEWER, CLASS A, TYPE 2, 12" TRENCH BACK FILL = 1 CUBIC YARD
EXIST. STR. NO. 3256 TO 20	4.2'	20	PROP. STORM SEWER, CLASS A, TYPE 2, 12" TRENCH BACK FILL = 2.9 CUBIC YARDS
EXIST. STR. NO. 3349 TO FLAT TOP 22	23.7'	22	PROP. STORM SEWER, CLASS A, TYPE 2, 12" TRENCH BACK FILL = 5.7 CUBIC YARD

DESIGNER NOTE: STORM SEWER PIPE ADJUSTED LENGTH:
= LENGTH C-C MINUS R_A MINUS R_B
(SEE SKETCH BELOW)

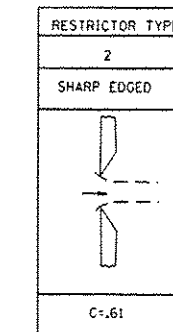
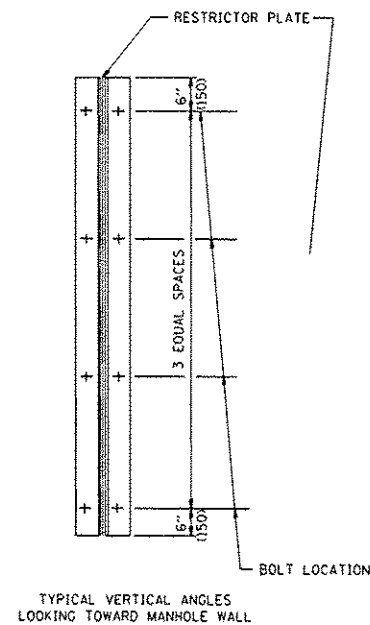




- NOTES:
1. ALL STEEL ANGLES AND PLATES TO BE GALVANIZED AFTER FABRICATION.
 2. ALL RESTRICTOR PLATES, ANGLES AND HARDWARE TO BE INCLUDED IN THE COST OF THE MANHOLE.
 3. BASIS OF PAYMENT: "MANHOLES, TYPE A, 6 FT., 4.8 m-DIAMETER, TYPE 1 FRAME, CLOSED LID, RESTRICTOR PLATE" EACH



- TOTAL BOLTS REQUIRED: 22
- NOTE:
1. ANGLES SHOULD BE 3x3x3/8 (75x75x75)
 2. VERTICAL ANGLES SHOULD EXTEND FROM THE BOTTOM OF THE RESTRICTOR PLATE TO THE TOP.
 3. HORIZONTAL ANGLES SHOULD EXTEND FROM VERTICAL ANGLE TO VERTICAL ANGLE.



STATION	MANHOLE DIAMETER	FRAME AND GRATE	RESTRICTOR TYPE	INSIDE RESTRICTOR TYPE DIAMETER in. (mm)	INVERT OF RESTRICTOR TYPE	ELEVATION OF TOP OF PLATE OVERFLOW
1	6'	TYPE 1	TYPE 2	16"	643.00'	646.68'

NOTE: OUTFLOW OVER-RESTRICTED TO PROVIDE REQUIRED DETENTION STORAGE.

ALL DIMENSIONS ARE IN INCHES (MILLIMETERS) UNLESS OTHERWISE SHOWN.

FILE NAME =	USER NAME = perajnaol	DESIGNED - R. SHAH	REVISED - AP 12/16/15
PROJECT =	PROJECT =	CHECKED -	REVISED -
PLOT SCALE = 100.0000 / in.	DATE = 09-09-94		
PLOT DATE = 12/17/2015			

STATE OF ILLINOIS
DEPARTMENT OF TRANSPORTATION

MANHOLE WITH RESTRICTOR PLATE - DETAIL
IL. ROUTE 68 (DUNDEE RD.) AT IL ROUTE 83 (ELMHURST RD.)

SCALE: NONE SHEET 1 OF 1 SHEETS STA. TO STA.

F.A.P. RTE.	SECTION	COUNTY	TOTAL SHEETS	SHEET NO.
343	304IN-3(12)	COOK	78	29
BD600-04 (BD-12)		CONTRACT NO. 60V97		
ILLINOIS FED. AID PROJECT				

PAVEMENT MARKING LEGEND (THERMOPLASTIC)

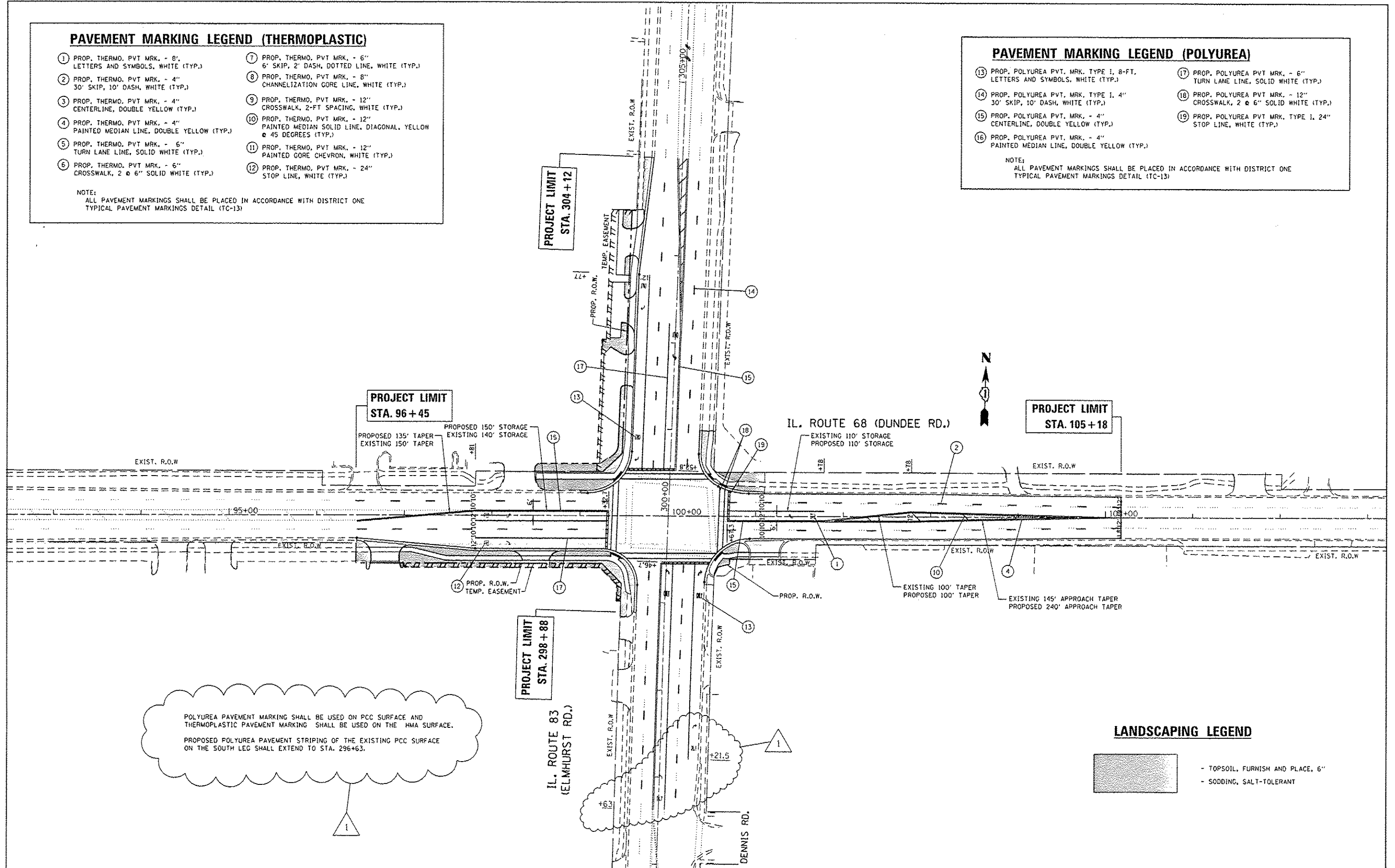
- 1 PROP. THERMO. PVT MRK. - 8" LETTERS AND SYMBOLS, WHITE (TYP.)
- 2 PROP. THERMO. PVT MRK. - 4" 30' SKIP, 10' DASH, WHITE (TYP.)
- 3 PROP. THERMO. PVT MRK. - 4" CENTERLINE, DOUBLE YELLOW (TYP.)
- 4 PROP. THERMO. PVT MRK. - 4" PAINTED MEDIAN LINE, DOUBLE YELLOW (TYP.)
- 5 PROP. THERMO. PVT MRK. - 6" TURN LANE LINE, SOLID WHITE (TYP.)
- 6 PROP. THERMO. PVT MRK. - 6" CROSSWALK, 2 @ 6" SOLID WHITE (TYP.)
- 7 PROP. THERMO. PVT MRK. - 6" 6' SKIP, 2' DASH, DOTTED LINE, WHITE (TYP.)
- 8 PROP. THERMO. PVT MRK. - 8" CHANNELIZATION GORE LINE, WHITE (TYP.)
- 9 PROP. THERMO. PVT MRK. - 12" CROSSWALK, 2-FT SPACING, WHITE (TYP.)
- 10 PROP. THERMO. PVT MRK. - 12" PAINTED MEDIAN SOLID LINE, DIAGONAL, YELLOW @ 45 DEGREES (TYP.)
- 11 PROP. THERMO. PVT MRK. - 12" PAINTED GORE CHEVRON, WHITE (TYP.)
- 12 PROP. THERMO. PVT MRK. - 24" STOP LINE, WHITE (TYP.)

NOTE:
ALL PAVEMENT MARKINGS SHALL BE PLACED IN ACCORDANCE WITH DISTRICT ONE TYPICAL PAVEMENT MARKINGS DETAIL (TC-13)

PAVEMENT MARKING LEGEND (POLYUREA)

- 13 PROP. POLYUREA PVT. MRK. TYPE I, 8-FT, LETTERS AND SYMBOLS, WHITE (TYP.)
- 14 PROP. POLYUREA PVT. MRK. TYPE I, 4" 30' SKIP, 10' DASH, WHITE (TYP.)
- 15 PROP. POLYUREA PVT. MRK. - 4" CENTERLINE, DOUBLE YELLOW (TYP.)
- 16 PROP. POLYUREA PVT. MRK. - 4" PAINTED MEDIAN LINE, DOUBLE YELLOW (TYP.)
- 17 PROP. POLYUREA PVT MRK. - 6" TURN LANE LINE, SOLID WHITE (TYP.)
- 18 PROP. POLYUREA PVT MRK. - 12" CROSSWALK, 2 @ 6" SOLID WHITE (TYP.)
- 19 PROP. POLYUREA PVT MRK. TYPE I, 24" STOP LINE, WHITE (TYP.)

NOTE:
ALL PAVEMENT MARKINGS SHALL BE PLACED IN ACCORDANCE WITH DISTRICT ONE TYPICAL PAVEMENT MARKINGS DETAIL (TC-13)



POLYUREA PAVEMENT MARKING SHALL BE USED ON PCC SURFACE AND THERMOPLASTIC PAVEMENT MARKING SHALL BE USED ON THE HMA SURFACE.
PROPOSED POLYUREA PAVEMENT STRIPING OF THE EXISTING PCC SURFACE ON THE SOUTH LEG SHALL EXTEND TO STA. 296+63.

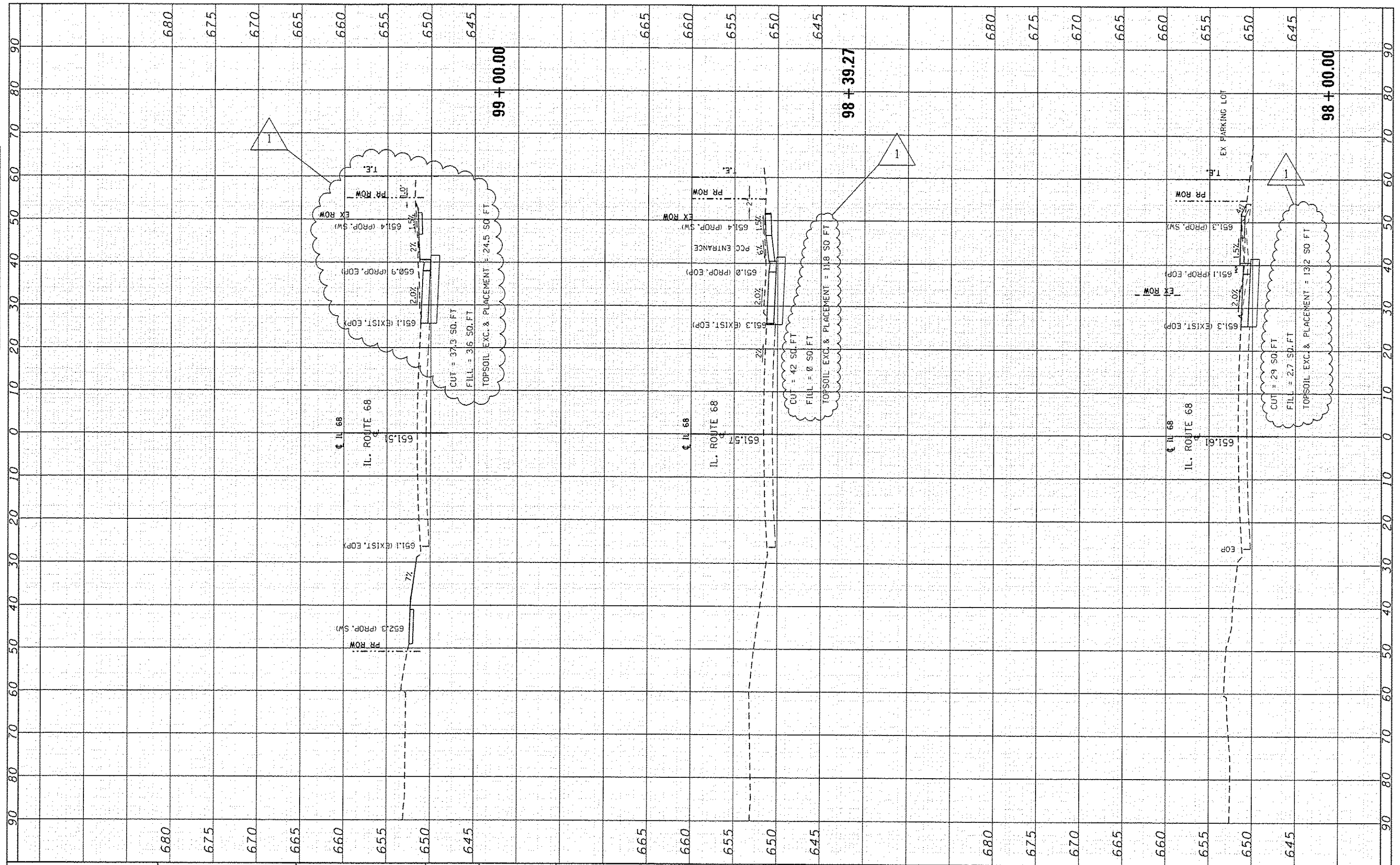
LANDSCAPING LEGEND

- TOPSOIL, FURNISH AND PLACE, 6"
- SODDING, SALT-TOLERANT

FILE NAME =	USER NAME = perognio	DESIGNED -	REVISED - AP 12/16/15	STATE OF ILLINOIS DEPARTMENT OF TRANSPORTATION	LANDSCAPING & PAVEMENT MARKING PLAN IL. ROUTE 68 (DUNDEE RD.) AT IL. ROUTE 83 (ELMHURST RD.)	F.A.P. RTE.	SECTION	COUNTY	TOTAL SHEETS	SHEET NO.	
Default	Projects\DOT Offices\District 1\Projects\PI23\Drawings\Design\PI24812-shr-gemote.dgn	CHECKED -	REVISED -			343	304IN+3 (12)	COOK	78	36	
	PLOT SCALE = 100.0000 / 1 in.	DATE -	REVISED -			SCALE: 1"=50'		SHEET OF SHEETS STA. TO STA.		CONTRACT NO. 60V97	
	PLOT DATE = 12/17/2015					ILLINOIS FED. AID PROJECT					

FINAL	DATE
SHEET	BY
NO.	
CONVERTED	
PROTOD	
TEMPLATE	
NOTE BOOK	
AREAS	
AREAS CHECKED	

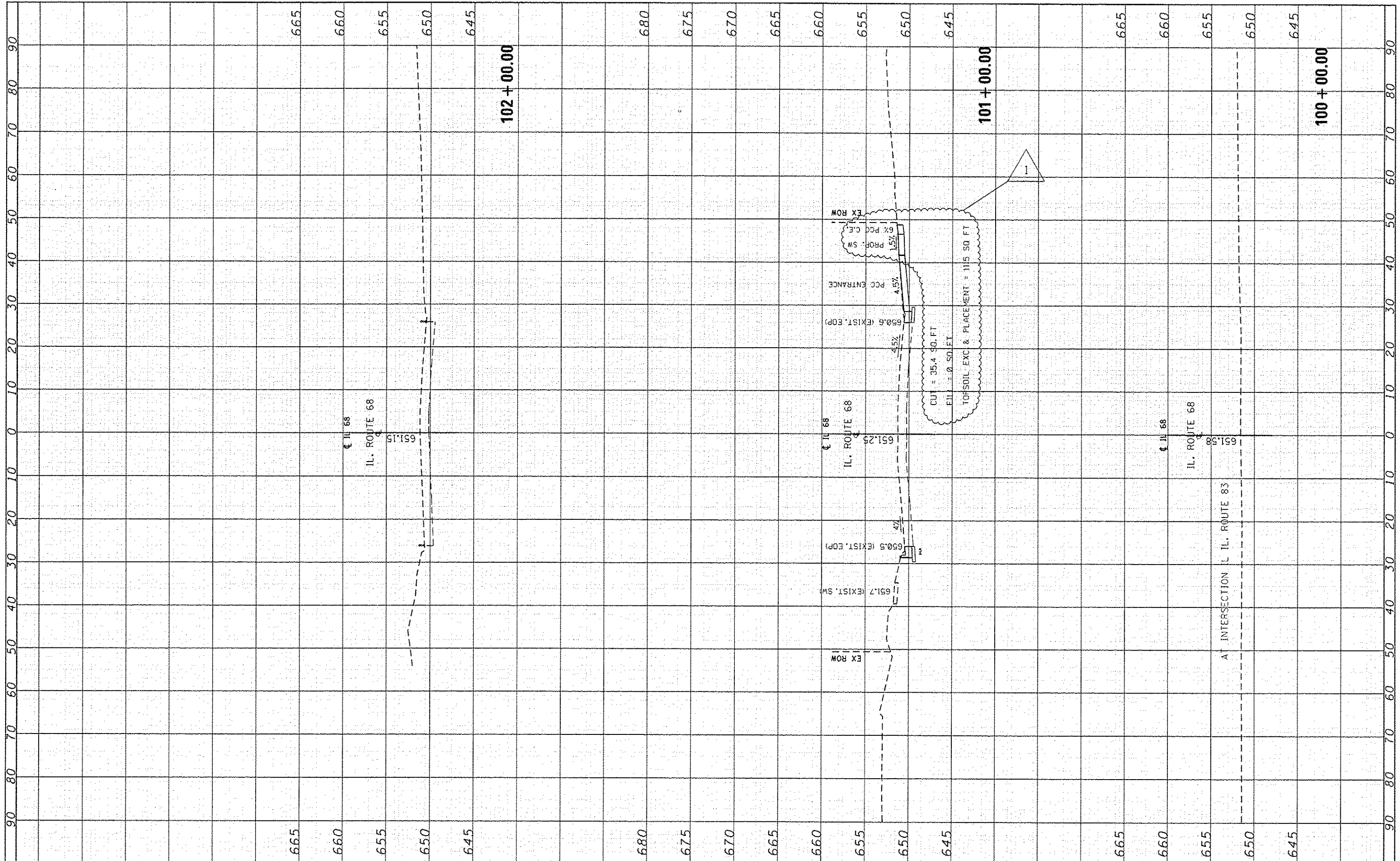
ORIGINAL	DATE
SHEET	BY
NO.	
CONVERTED	
PROTOD	
TEMPLATE	
NOTE BOOK	
AREAS	
AREAS CHECKED	



FILE NAME *	USER NAME = peraymool	DESIGNED -	REVISD - AP 12/18/15	STATE OF ILLINOIS DEPARTMENT OF TRANSPORTATION	CROSS SECTIONS IL. ROUTE 68		F.A.P. RTE.	SECTION	COUNTY	TOTAL SHEETS	SHEET NO.		
p:\11884CBID\INTEG\11\inois.gov\PIWIDOT\Documents\DOT Offices\District 1\Projects\124612\CD\DRAW\sign\124612-ahg-gennote.dgn	CHECKED -	REVISD -	343				3041N-3(12)	COOK	78	74			
Default	DATE -	REVISD -	SCALE:				SHEET	OF	SHEETS	STA. 98+00.00 TO STA. 99+00.00	CONTRACT NO. 60V97		
											ILLINOIS FED. AID PROJECT		

FINN	SURVEY	BY	DATE
NO.	NO.		
NO.	NO.		
NO.	NO.		

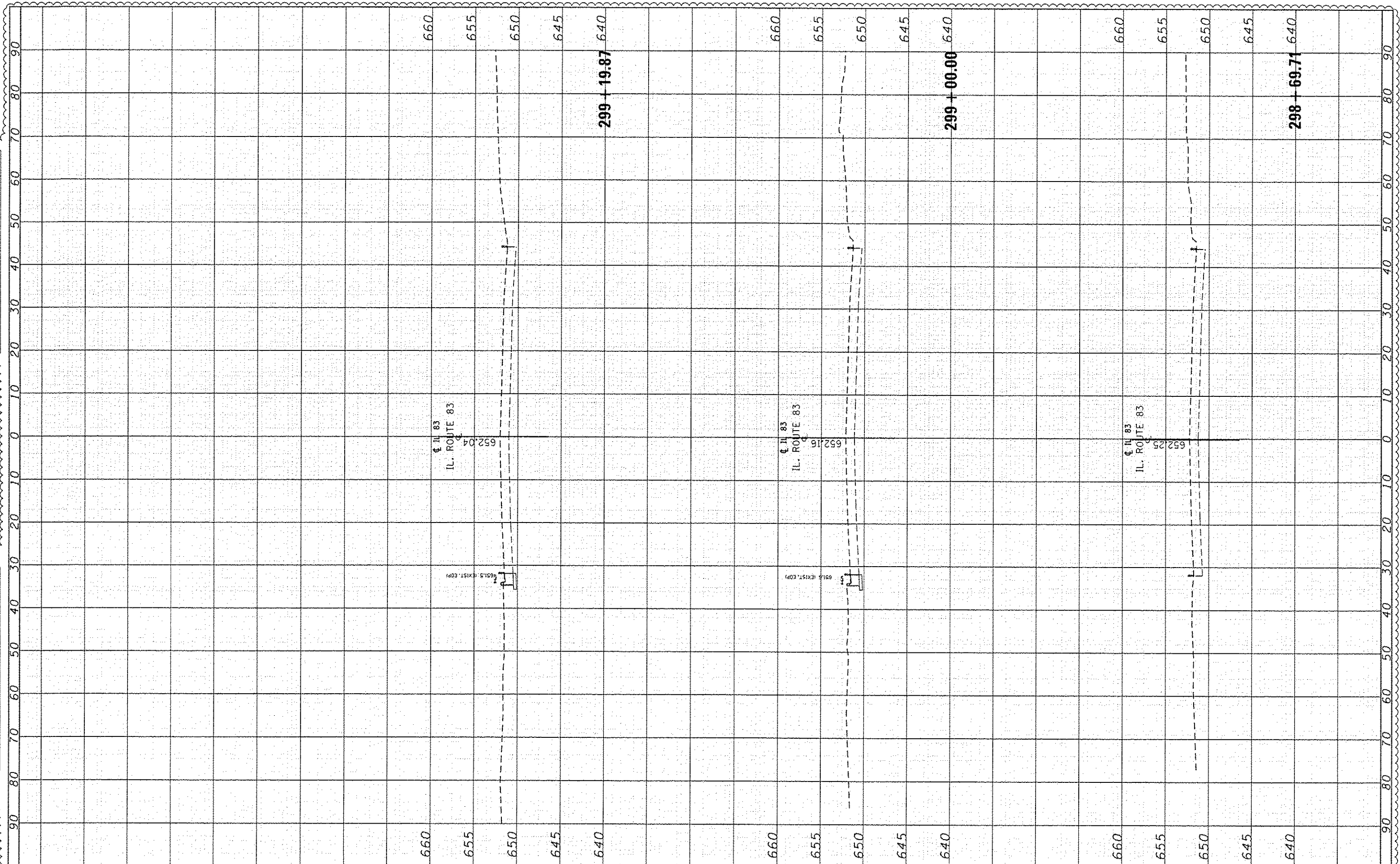
ORIGINAL	SURVEY	BY	DATE
NO.	NO.		
NO.	NO.		
NO.	NO.		



FILE NAME :	USER NAME :	DESIGNED :	REVISED :	STATE OF ILLINOIS DEPARTMENT OF TRANSPORTATION	CROSS SECTIONS IL. ROUTE 68	F.A.P.	SECTION	COUNTY	TOTAL	SHEET
\\N1L884E01DINTEG\Illinois.gov\PI\DOT\Documents\1007 Offices\Dist-rot 1N\Projects\PI\24812\CAD\BAR\design\N24812-shr-gennote.dgn						343	304IN-3(12)	COOK	78	75
PLOT SCALE : 20.0000' / 1"	CHECKED :	REVISED :	REVISED :			CONTRACT NO. 60V97				
PLOT DATE : 12/20/2015	DATE :	REVISED :	REVISED :			ILLINOIS FED. AID PROJECT				
				SCALE: SHEET OF SHEETS STA. 100+00.00 TO STA. 102+00.00						

FINAL SURVEY	DATE
NO. _____	BY _____
DATE _____	BY _____
NO. _____	BY _____
DATE _____	BY _____
NO. _____	BY _____
DATE _____	BY _____

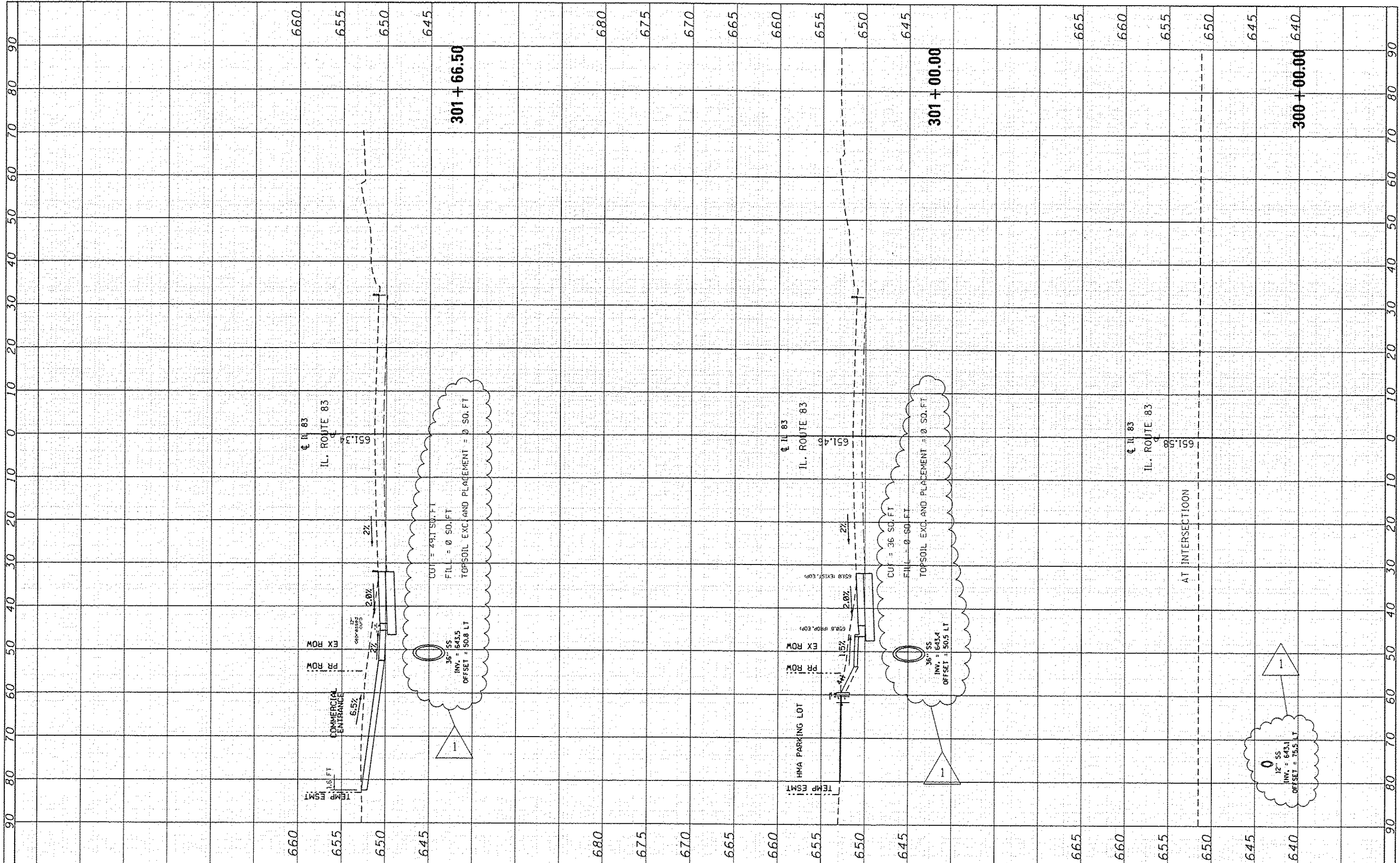
ORIGINAL SURVEY	DATE
NO. _____	BY _____
DATE _____	BY _____
NO. _____	BY _____
DATE _____	BY _____
NO. _____	BY _____
DATE _____	BY _____



FILE NAME =	USER NAME = porajpaul	DESIGNED -	REVISIONS	STATE OF ILLINOIS DEPARTMENT OF TRANSPORTATION	CROSS SECTIONS IL. ROUTE 83	F.A.P. RTE.	SECTION	COUNTY	TOTAL SHEETS	SHEET NO.
p:\11084EBID\INTEG.11\inois.gov\PI\DOT\Documents\DOT Offices\District 1\Projects\P124812\CRAD\BABA\sign\P124812-phr-gennote.dgn	DOT OFFICES\District 1\Projects\P124812\CRAD\BABA\sign\P124812-phr-gennote.dgn	DATE -	AP 12/18/15			343		COOK	78	75A
Default	Default	CHECKED -				SCALE:	SHEET OF SHEETS	CONTRACT NO. 60V97		ILLINOIS FED. AID PROJECT
		DATE -				STA. 298+69.71	TO STA. 299+19.87			

FINAL SURVEY	SURVEYED	BY	DATE
NOTE BOOK	PLOTTED		
	TEMPLATE		
	AREAS CHECKED		

ORIGINAL SURVEY	SURVEYED	BY	DATE
NOTE BOOK	PLOTTED		
	TEMPLATE		
	AREAS CHECKED		



FILE NAME =	USER NAME = poreynool	DESIGNED -	REVISED -
pc:\v\lrb04\EBID\INTEG.\illinois.gov\PI\031\Documents\ICOT Offices\District 1\Projects\P124812\CD\DRAWING\1924812-shtrgennote.dgn		AP 12/18/15	
Default		CHECKED -	REVISED -
		DATE -	REVISED -

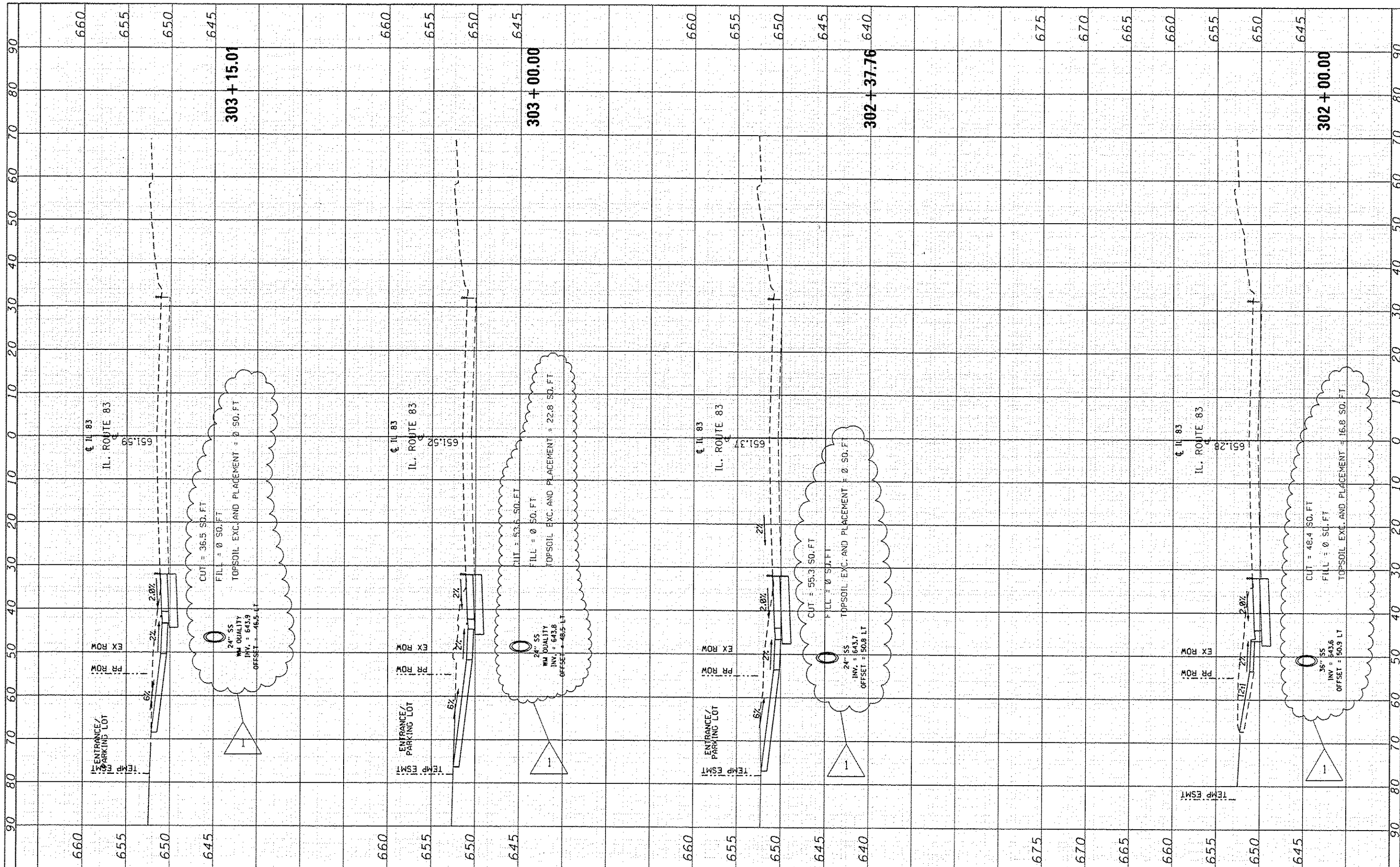
**STATE OF ILLINOIS
DEPARTMENT OF TRANSPORTATION**

CROSS SECTIONS IL. ROUTE 83	
SCALE:	SHEET OF SHEETS STA. 300+00.00 TO STA. 301+66.50

F.A.P. RTE.	SECTION	COUNTY	TOTAL SHEETS	SHEET NO.
343	3041N-3(12)	COOK	78	76
CONTRACT NO. 60V97			ILLINOIS FED. AID PROJECT	

FINL SURVEY	BY	DATE
SURVEYED		
NOTE BOOK		
AREAS CHECKED		
NO.		

ORIGINAL SURVEY	BY	DATE
PLANNED		
NOTE BOOK		
AREAS CHECKED		
NO.		



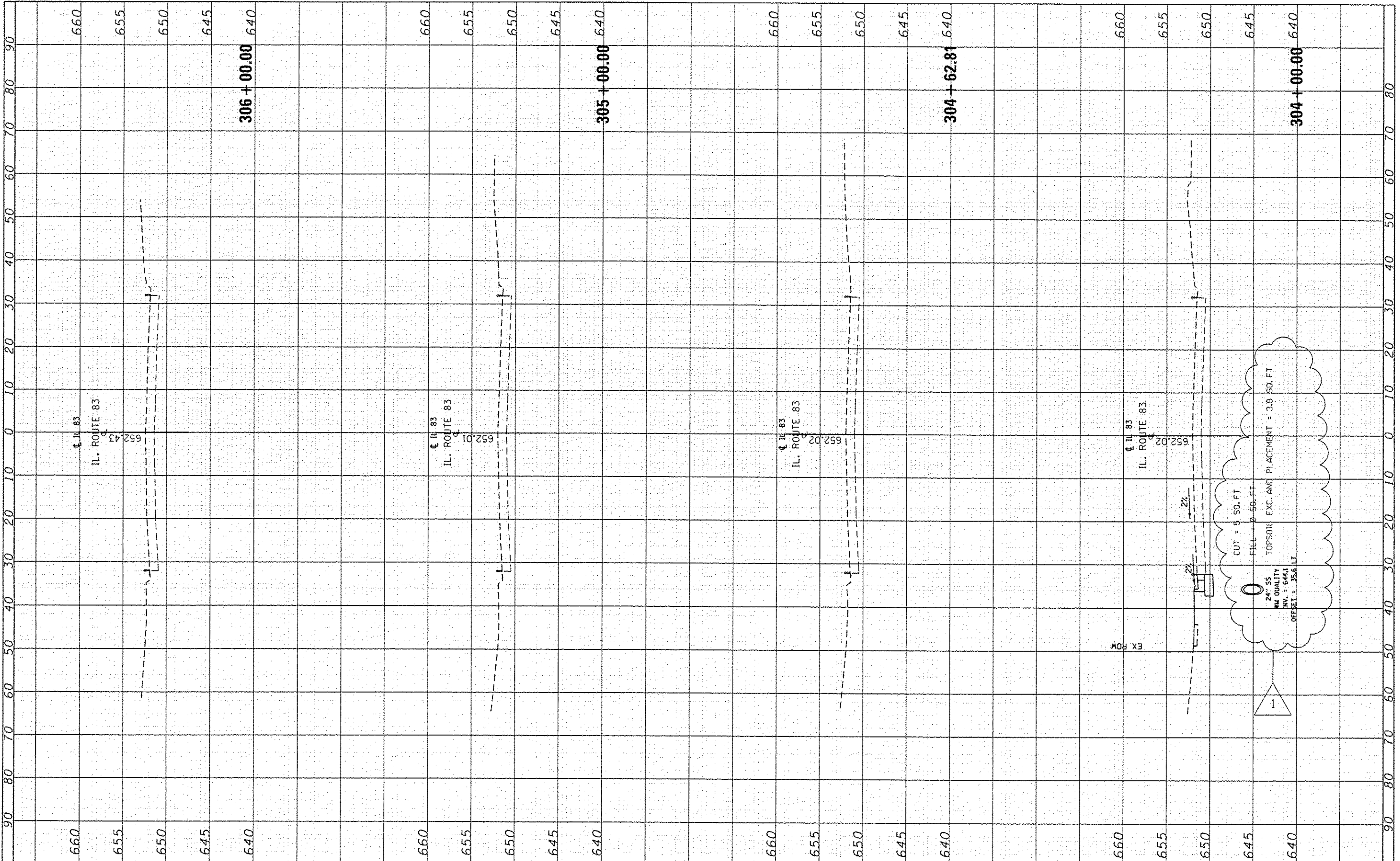
FILE NAME :	USER NAME :	DESIGNED :	REVISED :
p:\11\04\EBID\INT\EG_11\Illinois.gov\PI001\Documents\DOT Offices\District 1\Projects\PI24812\CAD\DRAW\sign\PI24812\ent-genota.dgn	paragonai	AP 12/18/15	AP 12/18/15
PLOT SCALE :	CHECKED :	REVISOR :	REVISOR :
28.0000' / 1"			
PLOT DATE :	DATE :	REVISOR :	REVISOR :
12/28/2015			

**STATE OF ILLINOIS
DEPARTMENT OF TRANSPORTATION**

CROSS SECTIONS		F.A.P. RTE.	SECTION	COUNTY	TOTAL SHEETS	SHEET NO.
IL. ROUTE 83		343	3041N-3(12)	COOK	78	77
SCALE:	SHEET OF SHEETS	STA. 302+00.00	TO STA. 303+15.01		CONTRACT NO. 60V97	
ILLINOIS FED. AID PROJECT						

FINN	SURVEY	DATE
SURVEY	PLOTTED	
NOTE BOOK	NO. DATE	
AREAS CHECKED		

ORIGINAL	DATE
SURVEY	
PLOTTED	
NOTE BOOK	
AREAS CHECKED	



FILE NAME :	USER NAME :	DESIGNED :	REVISOR :	STATE OF ILLINOIS	CROSS SECTIONS	F.A.P. R.T.E.	SECTION	COUNTY	TOTAL SHEETS	SHEET NO.
\\IL08\EBID\INTEG\1\mra.gov\FWIDOT\Documents\DOT Offices\District 1\Projects\PI24812\CAD\BAR\high\PI24812-shs-genote.dgn	parapool	AP 12/18/15	AP 12/18/15	DEPARTMENT OF TRANSPORTATION	IL. ROUTE 83	343	304(N-312)	COOK	78	78
Default	PLOT SCALE = 20.0000 / 1" = 100'	CHECKED :	REVISOR :	SCALE:	SHEET OF SHEETS	STA. 304+00.00 TO STA. 306+00.00		CONTRACT NO. 60V97		
	PLOT DATE = 12/28/2015	DATE :	REVISOR :	ILLINOIS FED. AID PROJECT						