

STATE OF ILLINOIS
DEPARTMENT OF TRANSPORTATION
DIVISION OF HIGHWAYS

**PROPOSED
HIGHWAY PLANS**

VARIOUS ROUTES
SECTION D5 EAB CONTROL 2016-1

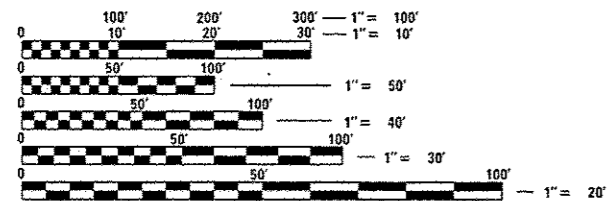
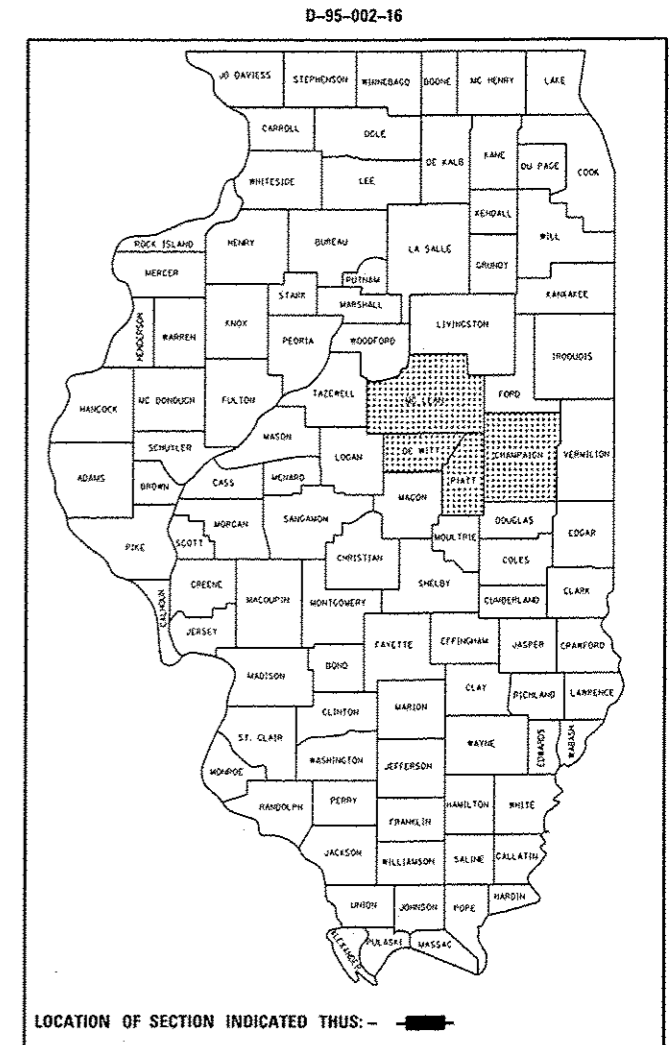
EMERALD ASH BORER CONTROL
VARIOUS COUNTIES

C-95-002-16

FOR LOCATION MAPS, SEE SHEETS 3 - 5

F.A. RTE.	SECTION	COUNTY	TOTAL SHEETS	SHEET NO.
VAR.	D5 EAB CONTROL 2016-1	VARIOUS	11	1
		ILLINOIS	CONTRACT NO. 70B65	

FOR INDEX OF SHEETS, SEE SHEET NO. 2
FOR SUMMARY OF QUANTITIES, SEE SHEET NO. 6



FULL SIZE PLANS HAVE BEEN PREPARED USING STANDARD ENGINEERING SCALES. REDUCED SIZED PLANS WILL NOT CONFORM TO STANDARD SCALES. IN MAKING MEASUREMENTS ON REDUCED PLANS, THE ABOVE SCALES MAY BE USED.

J.U.L.I.E.
JOINT UTILITY LOCATION INFORMATION FOR EXCAVATION
1-800-892-0123
OR 811

PROJECT ENGINEER: NANCY FASIG
PHONE NO. (217)465-4181

CONTRACT NO. 70B65

STATE OF ILLINOIS
DEPARTMENT OF TRANSPORTATION
DIVISION OF HIGHWAYS

SUBMITTED October 15, 2015

Kenneth A. Garnett
DEPUTY DIRECTOR OF HIGHWAYS, REGION ENGINEER *AKS*

Dec 4, 2015
John D. Baranzelli, P.E.
ENGINEER OF DESIGN AND ENVIRONMENT

Dec 4, 2015
Omer Osman, P.E.
DIRECTOR OF HIGHWAYS, CHIEF ENGINEER

PRINTED BY THE AUTHORITY
OF THE STATE OF ILLINOIS

INDEX OF SHEETS

- 1 COVER
- 2 INDEX, STANDARDS, AND GENERAL NOTES
- 3-5 LOCATION MAPS
- 6 SUMMARY OF QUANTITIES
- 7-11 SCHEDULE OF QUANTITIES

LIST OF STANDARDS

- 001006 DECIMAL OF AN INCH AND OF A FOOT
- 701101-04 OFF-ROAD OPERATIONS, MULTILANE, 15' (4.5M) TO 24" (600MM) FROM PAVEMENT EDGE
- 701106-02 OFF-ROAD OPERATIONS, MULTILANE, MORE THAN 15' (4.5 M) AWAY
- 701456-03 PARTIAL EXIT RAMP CLOSURE FREEWAY/EXPRESSWAY
- 701901-04 TRAFFIC CONTROL DEVICES

GENERAL NOTES

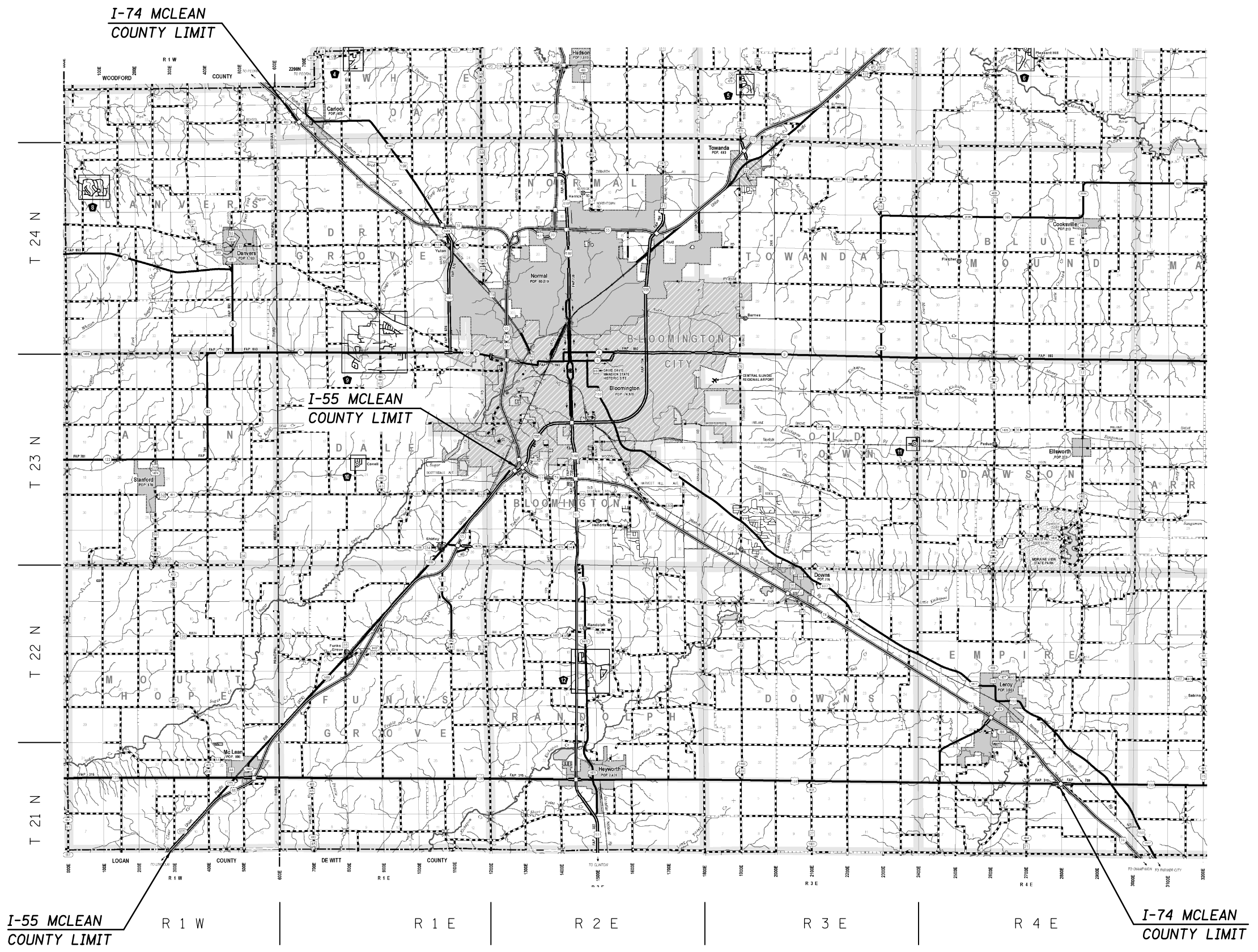
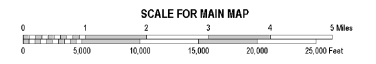
G.N.-100
 ENGLISH UNITS OF MEASUREMENT SHALL GOVERN OVER AND SUPERSEDE
 ANY METRIC UNITS SHOWN IN THIS CONTRACT. WHERE INCLUDED,
 METRIC UNITS ARE FOR INFORMATION ONLY.

NO COMMITMENTS.

FILE NAME *	USER NAME = piereabr	DESIGNED -	REVISED -	STATE OF ILLINOIS DEPARTMENT OF TRANSPORTATION	INDEX OF SHEETS, LIST OF STANDARDS & GENERAL NOTES	F.A. RTE.	SECTION	COUNTY	TOTAL SHEETS	SHEET NO.
p:\11\084EB\INTEG.illinois.gov\PI\DOT\Documents\DOT Offices\District 5\Projects\0570865\0570865-shr-genote.dwg	H:\A\00Data\Design\0570865-shr-genote.dwg	CHECKED -	REVISED -			VAR	DS EAB CONTROL 2016-1	VARIOUS	11	2
#MODELNAME#	PLOT SCALE = 48.0000' / 1".	DATE -	REVISED -			SCALE: NONE	SHEET 1 OF 1 SHEETS	STA.	TO STA.	CONTRACT NO. 70865
	PLOT DATE = 10/15/2010					ILLINOIS FED. AID PROJECT				

LOCATION MAP

MCLEAN COUNTY



FILE NAME =	USER NAME = piersonbr	DESIGNED -	REVISED -	STATE OF ILLINOIS DEPARTMENT OF TRANSPORTATION	LOCATION MAP MCLEAN COUNTY	F.A. RTE.	SECTION	COUNTY	TOTAL SHEETS	SHEET NO.
<p style="font-size: small;">p:\11\084EBID\INTEG.illinois.gov\PI\DOT\Documents\DOT Offices\District 5\Projects\057\DRAWING\Design\0570865-shr-loc.mxd</p>				SCALE: NONE	SHEET 1 OF 1 SHEETS	STA.	TO STA.	VAR	D5 EAB CONTROL 2016-1	ILLINOIS FED. AID PROJECT
<p style="font-size: small;">\$MODELNAME\$</p>				PLOT SCALE = 40.0000' / in.	CHECKED -	REVISED -	REVISED -	COUNTY	TOTAL SHEETS	SHEET NO.
				DATE -	REVISED -	REVISED -	REVISED -	COUNTY	TOTAL SHEETS	SHEET NO.
				PLOT DATE = 10/15/2015	DATE -	REVISED -	REVISED -	COUNTY	TOTAL SHEETS	SHEET NO.
								VARIOUS	11	3
								CONTRACT NO. 70B65		

SUMMARY OF QUANTITIES

LOCATION OF WORK:

VARIOUS ROUTES VARIOUS COUNTIES RURAL 100% STATE 0031	VARIOUS ROUTES VARIOUS COUNTIES URBAN 100% STATE 0031
---	---

CONSTRUCTION TYPE CODE:

CODE NO	ITEM	UNIT	TOTAL QUANTITY		
20100110	TREE REMOVAL (6 TO 15 UNITS DIAMETER)	UNIT	3,624.0	1,868.0	1,756.0
20100210	TREE REMOVAL (OVER 15 UNITS DIAMETER)	UNIT	1,287.0	911.0	376.0
67100100	MOBILIZATION	LSUM	1.0	0.6	0.4
70100825	TRAFFIC CONTROL AND PROTECTION, STANDARD 701456	LSUM	1.0	0.6	0.4

4

SCHEDULE OF QUANTITIES

MCLEAN COUNTY

SHEET 1 OF 3

ROUTE	COUNTY	LOCATION	MARKED NUMBER	6 TO 15 UNITS DIAMETER (UNITS)	OVER 15 UNITS DIAMETER (UNITS)	URBAN/RURAL
McLEAN INTERCHANGE						
I-55	McLEAN	SE QUADRANT	1	12		RURAL
I-55	McLEAN	SE QUADRANT	2	14		RURAL
I-55	McLEAN	SE QUADRANT	3		17	RURAL
I-55	McLEAN	SE QUADRANT	4	10		RURAL
I-55	McLEAN	SE QUADRANT	5	15		RURAL
I-55	McLEAN	SE QUADRANT	6	10		RURAL
I-55	McLEAN	SE QUADRANT	7	14		RURAL
I-55	McLEAN	SE QUADRANT	8		16.5	RURAL
I-55	McLEAN	SE QUADRANT	9		15.5	RURAL
I-55	McLEAN	SE QUADRANT	10	13		RURAL
I-55	McLEAN	SE QUADRANT	11	12		RURAL
I-55	McLEAN	SE QUADRANT	12	13		RURAL
I-55	McLEAN	SE QUADRANT	13		20	RURAL
I-55	McLEAN	SE QUADRANT	14		18	RURAL
I-55	McLEAN	SE QUADRANT	15		17	RURAL
I-55	McLEAN	SE QUADRANT	16	10		RURAL
I-55	McLEAN	SE QUADRANT	17	7.5		RURAL
I-55	McLEAN	SE QUADRANT	18		16	RURAL
I-55	McLEAN	SE QUADRANT	19	7		RURAL
I-55	McLEAN	NE QUADRANT	20	14.5		RURAL
I-55	McLEAN	NE QUADRANT	21	14.5		RURAL
I-55	McLEAN	NE QUADRANT	22	15		RURAL
I-55	McLEAN	NE QUADRANT	23	11		RURAL
I-55	McLEAN	NE QUADRANT	24		15.5	RURAL
I-55	McLEAN	NE QUADRANT	25	6.5		RURAL
I-55	McLEAN	NE QUADRANT	26	15		RURAL
I-55	McLEAN	NE QUADRANT	27	15		RURAL
I-55	McLEAN	NE QUADRANT	28	13		RURAL
I-55	McLEAN	NE QUADRANT	29	14		RURAL
I-55	McLEAN	NE QUADRANT	30	12		RURAL
I-55	McLEAN	NE QUADRANT	31	14		RURAL
I-55	McLEAN	NE QUADRANT	32	11		RURAL
I-55	McLEAN	NE QUADRANT	33	12		RURAL
I-55	McLEAN	NE QUADRANT	34	15		RURAL
I-55	McLEAN	NE QUADRANT	35	14		RURAL
I-55	McLEAN	NW QUADRANT	36	10		RURAL
I-55	McLEAN	NW QUADRANT	37	12		RURAL
I-55	McLEAN	NW QUADRANT	38	13		RURAL
I-55	McLEAN	NW QUADRANT	39	15		RURAL
I-55	McLEAN	NW QUADRANT	40	14		RURAL
I-55	McLEAN	NW QUADRANT	41		17	RURAL
I-55	McLEAN	NW QUADRANT	42		15.5	RURAL
I-55	McLEAN	NW QUADRANT	43	14		RURAL
I-55	McLEAN	NW QUADRANT	44	15		RURAL
I-55	McLEAN	NW QUADRANT	45		18	RURAL
I-55	McLEAN	NW QUADRANT	46		16	RURAL
I-55	McLEAN	NW QUADRANT	47	14		RURAL
I-55	McLEAN	NW QUADRANT	48	15		RURAL
I-55	McLEAN	NW QUADRANT	49	10		RURAL
I-55	McLEAN	NW QUADRANT	50	13		RURAL
I-55	McLEAN	NW QUADRANT	51		19	RURAL
I-55	McLEAN	NW QUADRANT	52		18	RURAL
I-55	McLEAN	NW QUADRANT	53	15		RURAL
I-55	McLEAN	NW QUADRANT	54	15		RURAL
SUBTOTAL				458	222	

FUNKS GROVE REST AREA

I-55	McLEAN	N/A		48		RURAL
SUBTOTAL					48	

NOTE: MARKED NUMBER ARE TREES
AS MARKED IN THE FIELD

ROUTE	COUNTY	LOCATION	MARKED NUMBER	6 TO 15 UNITS DIAMETER (UNITS)	OVER 15 UNITS DIAMETER (UNITS)	URBAN/RURAL
SHIRLEY INTERCHANGE						
I-55	McLEAN	NE QUADRANT	1	10		URBAN
I-55	McLEAN	NE QUADRANT	2	12		URBAN
I-55	McLEAN	NE QUADRANT	3	7		URBAN
I-55	McLEAN	NE QUADRANT	4	9		URBAN
I-55	McLEAN	NE QUADRANT	5	14		URBAN
I-55	McLEAN	NE QUADRANT	6	8		URBAN
I-55	McLEAN	NE QUADRANT	7	7		URBAN
I-55	McLEAN	NE QUADRANT	8	13		URBAN
I-55	McLEAN	NW QUADRANT	1	8		URBAN
I-55	McLEAN	NW QUADRANT	2	8		URBAN
I-55	McLEAN	NW QUADRANT	3	14		URBAN
I-55	McLEAN	NW QUADRANT	4		16	URBAN
I-55	McLEAN	NW QUADRANT	5		20	URBAN
I-55	McLEAN	NW QUADRANT	6	14		URBAN
I-55	McLEAN	NW QUADRANT	7	13		URBAN
I-55	McLEAN	NW QUADRANT	8	8		URBAN
I-55	McLEAN	NW QUADRANT	9	14		URBAN
I-55	McLEAN	NW QUADRANT	10	14		URBAN
I-55	McLEAN	NW QUADRANT	11	14		URBAN
I-55	McLEAN	NW QUADRANT	12	9		URBAN
I-55	McLEAN	NW QUADRANT	13	8		URBAN
I-55	McLEAN	NW QUADRANT	14	7		URBAN
I-55	McLEAN	NW QUADRANT	15	11		URBAN
I-55	McLEAN	NW QUADRANT	16	14		URBAN
I-55	McLEAN	NW QUADRANT	17	9		URBAN
I-55	McLEAN	NW QUADRANT	18	8		URBAN
I-55	McLEAN	NW QUADRANT	19	10		URBAN
I-55	McLEAN	NW QUADRANT	20	13		URBAN
I-55	McLEAN	NW QUADRANT	21	12		URBAN
I-55	McLEAN	NW QUADRANT	22	10		URBAN
I-55	McLEAN	NW QUADRANT	23	10		URBAN
I-55	McLEAN	NW QUADRANT	23	9		URBAN
I-55	McLEAN	NW QUADRANT	24	14		URBAN
I-55	McLEAN	SW QUADRANT	1	8		URBAN
I-55	McLEAN	SW QUADRANT	2	8		URBAN
I-55	McLEAN	SW QUADRANT	3	10		URBAN
I-55	McLEAN	SW QUADRANT	4	9		URBAN
I-55	McLEAN	SW QUADRANT	5	11		URBAN
I-55	McLEAN	SW QUADRANT	6	8		URBAN
I-55	McLEAN	SW QUADRANT	7	8		URBAN
I-55	McLEAN	SW QUADRANT	8	12		URBAN
I-55	McLEAN	SW QUADRANT	9	9		URBAN
I-55	McLEAN	SE QUADRANT	1-35*	385		URBAN
I-55	McLEAN	SE QUADRANT	36		17	URBAN
SUBTOTAL				799	53	
*35 @ AVG. 10-12 UNITS						

MARKET STREET INTERCHANGE

I-55	McLEAN		1		30	URBAN
SUBTOTAL					30	

I-55 NB/I-74 WB NORTH INTERCHANGE

55/74	McLEAN		1	12		URBAN
55/74	McLEAN		2	14		URBAN
55/74	McLEAN		3	13		URBAN
55/74	McLEAN		4	12		URBAN
55/74	McLEAN		5	12		URBAN
55/74	McLEAN		6	14		URBAN
55/74	McLEAN		7	13		URBAN
55/74	McLEAN		8	10		URBAN
55/74	McLEAN		9	14		URBAN
55/74	McLEAN		10	12		URBAN
SUBTOTAL				126		

SCHEDULE OF QUANTITIES

MCLEAN COUNTY

SHEET 2 OF 3

ROUTE	COUNTY	LOCATION	MARKED NUMBER	6 TO 15 UNITS DIAMETER (UNITS)	OVER 15 UNITS DIAMETER (UNITS)	URBAN/RURAL
I-55 SB/I-74 EB NORTH INTERCHANGE						
55/74	McLEAN		1	10		URBAN
55/74	McLEAN		2	12		URBAN
55/74	McLEAN		3	8		URBAN
55/74	McLEAN		4	8		URBAN
55/74	McLEAN		5	10		URBAN
55/74	McLEAN		6	14		URBAN
55/74	McLEAN		7	13		URBAN
55/74	McLEAN		8	14		URBAN
55/74	McLEAN		9	12		URBAN
SUBTOTAL				101		

ROUTE	COUNTY	LOCATION	MARKED NUMBER	6 TO 15 UNITS DIAMETER (UNITS)	OVER 15 UNITS DIAMETER (UNITS)	URBAN/RURAL
I-74 WESTBOUND						
I-74	McLEAN	MM 126.25 NEAR SN 0105	1	14		URBAN
I-74	McLEAN	MM 126.25 NEAR SN 0105	2		24	URBAN
I-74	McLEAN	MM 126.25 NEAR SN 0105	3	7		URBAN
I-74	McLEAN	MM 126.25 NEAR SN 0105	4	7		URBAN
I-74	McLEAN	MM 126.25 NEAR SN 0105	5	10		URBAN
I-74	McLEAN	MM 126.25 NEAR SN 0105	6	7		URBAN
I-74	McLEAN	MM 126.25 NEAR SN 0105	7	8		URBAN
I-74	McLEAN	MM 126.25 NEAR SN 0105	8		28	URBAN
I-74	McLEAN	MM 126.25 NEAR SN 0105	9	7		URBAN
I-74	McLEAN	MM 126.25 NEAR SN 0105	10	10		URBAN
I-74	McLEAN	MM 126.25 NEAR SN 0105	11	10		URBAN
I-74	McLEAN	MM 126.25 NEAR SN 0105	12	10		URBAN
I-74	McLEAN	MM 126	1	8		URBAN
I-74	McLEAN	MM 126	2	9		URBAN
I-74	McLEAN	MM 126	3	8		URBAN
I-74	McLEAN	MM 126	4	10		URBAN
I-74	McLEAN	MM 126	5	11		URBAN
I-74	McLEAN	MM 126	6	12		URBAN
I-74	McLEAN	MM 126	7	8		URBAN
I-74	McLEAN	MM 126	8	9		URBAN
I-74	McLEAN	MM 126	9	9		URBAN
I-74	McLEAN	MM 126	10	10		URBAN
I-74	McLEAN	MM 126	11	11		URBAN
I-74	McLEAN	MM 126	12	9		URBAN
I-74	McLEAN	MM 126	13	9		URBAN
I-74	McLEAN	MM 126	14	10		URBAN
I-74	McLEAN	MM 126	15	11		URBAN
I-74	McLEAN	MM 126	16	9		URBAN
I-74	McLEAN	MM 126	17	9		URBAN
I-74	McLEAN	MM 126	18	11		URBAN
I-74	McLEAN	MM 126	19	12		URBAN
I-74	McLEAN	MM 126	20	14		URBAN
I-74	McLEAN	MM 125.25 (DEAD TREE)	1		16	RURAL
I-74	McLEAN	MM 125.25	2	8		RURAL
I-74	McLEAN	MM 125.25	3	10		RURAL
I-74	McLEAN	MM 125.25	4	8		RURAL
I-74	McLEAN	MM 125.25	5	8		RURAL
I-74	McLEAN	MM 125.25	6	7		RURAL
I-74	McLEAN	MM 125.25	7	10		RURAL
I-74	McLEAN	MM 125.25	8	10		RURAL
I-74	McLEAN	MM 125.25	9	7		RURAL
I-74	McLEAN	MM 125.25	10	7		RURAL
I-74	McLEAN	MM 125.25	11	12		RURAL
I-74	McLEAN	MM 125.25	12	7		RURAL
I-74	McLEAN	MM 125.25	13	8		RURAL
I-74	McLEAN	MM 125.25	14	8		RURAL
SUBTOTAL				399	68	

ROUTE	COUNTY	LOCATION	MARKED NUMBER	6 TO 15 UNITS DIAMETER (UNITS)	OVER 15 UNITS DIAMETER (UNITS)	URBAN/RURAL
I-74 EASTBOUND						
I-74	McLEAN	MM 126.25 NEAR SN 0105	1		22	URBAN
I-74	McLEAN	MM 126.25 NEAR SN 0105	2		17	URBAN
I-74	McLEAN	MM 126.25 NEAR SN 0105	3	10		URBAN
SUBTOTAL				10	39	

ROUTE	COUNTY	LOCATION	MARKED NUMBER	6 TO 15 UNITS DIAMETER (UNITS)	OVER 15 UNITS DIAMETER (UNITS)	URBAN/RURAL
CARLOCK INTERCHANGE						
I-74	McLEAN	NW QUADRANT	1		19	RURAL
I-74	McLEAN	OUTSIDE EB ON RAMP	2	7		RURAL
I-74	McLEAN	OUTSIDE EB ON RAMP	3	9		RURAL
I-74	McLEAN	OUTSIDE EB ON RAMP	4	6		RURAL
I-74	McLEAN	OUTSIDE EB ON RAMP	5	6		RURAL
I-74	McLEAN	OUTSIDE EB ON RAMP	6	8		RURAL
I-74	McLEAN	OUTSIDE EB ON RAMP	7	11		RURAL
I-74	McLEAN	OUTSIDE EB ON RAMP	8	10		RURAL
SUBTOTAL				57	19	

ROUTE	COUNTY	LOCATION	MARKED NUMBER	6 TO 15 UNITS DIAMETER (UNITS)	OVER 15 UNITS DIAMETER (UNITS)	URBAN/RURAL
I-55/I-74 SOUTH INTERCHANGE						
I-55/I-74	McLEAN		2	13		URBAN
I-55/I-74	McLEAN		3	12		URBAN
I-55/I-74	McLEAN		4	11		URBAN
I-55/I-74	McLEAN		5	12		URBAN
I-55/I-74	McLEAN		6	12		URBAN
I-55/I-74	McLEAN		7	13		URBAN
I-55/I-74	McLEAN		8	14		URBAN
I-55/I-74	McLEAN		9	10		URBAN
I-55/I-74	McLEAN		10	11		URBAN
SUBTOTAL				108		

ROUTE	COUNTY	LOCATION	MARKED NUMBER	6 TO 15 UNITS DIAMETER (UNITS)	OVER 15 UNITS DIAMETER (UNITS)	URBAN/RURAL
BUSN. 51 SOUTH INTERCHANGE						
I-74	McLEAN		1		24	URBAN
I-74	McLEAN		2	12		URBAN
I-74	McLEAN		3	14		URBAN
I-74	McLEAN		4	14		URBAN
I-74	McLEAN		5	12		URBAN
I-74	McLEAN		6	10		URBAN
I-74	McLEAN		7	13		URBAN
SUBTOTAL				75	24	

ROUTE	COUNTY	LOCATION	MARKED NUMBER	6 TO 15 UNITS DIAMETER (UNITS)	OVER 15 UNITS DIAMETER (UNITS)	URBAN/RURAL
DOWNS INTERCHANGE						
I-74	McLEAN	INFIELDS	1	12		URBAN
I-74	McLEAN	INFIELDS	2	10		URBAN
I-74	McLEAN	INFIELDS	3	12		URBAN
I-74	McLEAN	INFIELDS	4	10		URBAN
I-74	McLEAN	INFIELDS	5	12		URBAN
I-74	McLEAN	INFIELDS	6	10		URBAN
I-74	McLEAN	INFIELDS	7	15		URBAN
I-74	McLEAN	INFIELDS	8	15		URBAN
I-74	McLEAN	INFIELDS	9	15		URBAN
I-74	McLEAN	INFIELDS	10	15		URBAN
I-74	McLEAN	INFIELDS	11	8		URBAN
I-74	McLEAN	INFIELDS	12	14		URBAN
I-74	McLEAN	INFIELDS	13	8		URBAN
I-74	McLEAN	INFIELDS	14	10		URBAN
I-74	McLEAN	INFIELDS	15	14		URBAN
I-74	McLEAN	INFIELDS	16	8		URBAN
I-74	McLEAN	INFIELDS	17	13		URBAN
I-74	McLEAN	INFIELDS	18	10		URBAN
I-74	McLEAN	INFIELDS	19	10		URBAN
I-74	McLEAN	INFIELDS	20	12		URBAN
SUBTOTAL				233		

NOTE: MARKED NUMBER ARE TREES AS MARKED IN THE FIELD

SCHEDULE OF QUANTITIES

MCLEAN COUNTY

SHEET 3 OF 3

ROUTE	COUNTY	LOCATION	MARKED NUMBER	6 TO 15 UNITS DIAMETER (UNITS)	OVER 15 UNITS DIAMETER (UNITS)	URBAN/ RURAL
US 136 INTERCHANGE						
I-74	McLEAN	SW QUADRANT	1	15		RURAL
I-74	McLEAN	SW QUADRANT	2	14		RURAL
I-74	McLEAN	SW QUADRANT	3	12		RURAL
I-74	McLEAN	SW QUADRANT	4	13		RURAL
I-74	McLEAN	SW QUADRANT	5	15		RURAL
I-74	McLEAN	SW QUADRANT	6		17	RURAL
I-74	McLEAN	SE QUADRANT	7	14		RURAL
I-74	McLEAN	SE QUADRANT	8		28	RURAL
I-74	McLEAN	SE QUADRANT	9	8		RURAL
I-74	McLEAN	SE QUADRANT	10	10		RURAL
I-74	McLEAN	SE QUADRANT	11	8		RURAL
I-74	McLEAN	SE QUADRANT	12		18	RURAL
I-74	McLEAN	SE QUADRANT	13	8		RURAL
I-74	McLEAN	SE QUADRANT	14		17	RURAL
I-74	McLEAN	SE QUADRANT	15		28	RURAL
I-74	McLEAN	SE QUADRANT	16	15		RURAL
I-74	McLEAN	NW QUADRANT	1	8.5		RURAL
I-74	McLEAN	NW QUADRANT	2	8.5		RURAL
I-74	McLEAN	NW QUADRANT	3	11		RURAL
I-74	McLEAN	NW QUADRANT	4	13		RURAL
I-74	McLEAN	NW QUADRANT	5		19	RURAL
I-74	McLEAN	NW QUADRANT	6		20	RURAL
I-74	McLEAN	NW QUADRANT	7		21	RURAL
I-74	McLEAN	NW QUADRANT	8	11		RURAL
I-74	McLEAN	NW QUADRANT	9	8		RURAL
I-74	McLEAN	NW QUADRANT	10	7		RURAL
I-74	McLEAN	NW QUADRANT	11	8		RURAL
I-74	McLEAN	NW QUADRANT	12	15		RURAL
I-74	McLEAN	NW QUADRANT	13		28	RURAL
I-74	McLEAN	NW QUADRANT	14	13		RURAL
I-74	McLEAN	NW QUADRANT	15	8		RURAL
I-74	McLEAN	NW QUADRANT	16	10		RURAL
I-74	McLEAN	NW QUADRANT	17	12		RURAL
I-74	McLEAN	NW QUADRANT	18	7		RURAL
I-74	McLEAN	NW QUADRANT	19	8		RURAL
I-74	McLEAN	NW QUADRANT	20	8		RURAL
I-74	McLEAN	NW QUADRANT	21	7		RURAL
I-74	McLEAN	NW QUADRANT	22	14		RURAL
SUBTOTAL				309	196	

NOTE: MARKED NUMBER ARE TREES
AS MARKED IN THE FIELD

FILE NAME =	USER NAME = piersonbr	DESIGNED -	REVISED -	STATE OF ILLINOIS DEPARTMENT OF TRANSPORTATION	SCHEDULE OF QUANTITIES MCLEAN COUNTY	F.A. RTE.	SECTION	COUNTY	TOTAL SHEETS	SHEET NO.		
p:\11\084EBIDINTEG.illinois.gov\PIWIDOT\Documents\DOT Offices\District 5\Projects\0577\DRAWING\Design\0570865-shr-schedule.dwg						VAR	D5 EAB CONTROL 2016-1	VARIOUS	11	9		
PLOT SCALE = 40.0000' / in.						CONTRACT NO. 70B65						
PLOT DATE = 10/15/2015						SCALE: NONE		SHEET 3 OF 3 SHEETS		STA. TO STA.		
ILLINOIS FED. AID PROJECT												

SCHEDULE OF QUANTITIES

DEWITT & PIATT COUNTIES

SHEET 1 OF 1

ROUTE	COUNTY	LOCATION	MARKED NUMBER	6 TO 15 UNITS DIAMETER (UNITS)	OVER 15 UNITS DIAMETER (UNITS)	URBAN/RURAL
FARMLAND REST AREA EASTBOUND						
I-74	DEWITT	EB REST AREA	1	8		RURAL
I-74	DEWITT	EB REST AREA	2	10		RURAL
I-74	DEWITT	EB REST AREA	3	7		RURAL
I-74	DEWITT	EB REST AREA	4	8		RURAL
I-74	DEWITT	WB RA AT END OF RAMP	5	10		RURAL
I-74	DEWITT	WB RA AT END OF RAMP	6	10		RURAL
I-74	DEWITT	WB RA AT END OF RAMP	7	10		RURAL
I-74	DEWITT	WB RA AT END OF RAMP	8	10		RURAL
I-74	DEWITT	WB RA AT END OF RAMP	9	11		RURAL
I-74	DEWITT	WB RA AT END OF RAMP	10	11		RURAL
SUBTOTAL				95		

ROUTE	COUNTY	LOCATION	MARKED NUMBER	6 TO 15 UNITS DIAMETER (UNITS)	OVER 15 UNITS DIAMETER (UNITS)	URBAN/RURAL
EASTBOUND 1500 FT. W OF FARMER CITY EXIT						
I-74	DEWITT	N/A	1		18	RURAL
I-74	DEWITT	N/A	2	8		RURAL
I-74	DEWITT	N/A	3	8		RURAL
I-74	DEWITT	N/A	4	15		RURAL
I-74	DEWITT	N/A	5		24	RURAL
I-74	DEWITT	N/A	6	8		RURAL
I-74	DEWITT	N/A	7	14		RURAL
I-74	DEWITT	N/A	8		21	RURAL
I-74	DEWITT	N/A	9	6		RURAL
I-74	DEWITT	N/A	10	6		RURAL
I-74	DEWITT	N/A	11	8		RURAL
I-74	DEWITT	N/A	12		24	RURAL
I-74	DEWITT	N/A	13	8		RURAL
I-74	DEWITT	N/A	14		21	RURAL
SUBTOTAL				81	108	

NOTE: MARKED NUMBER ARE TREES AS MARKED IN THE FIELD

ROUTE	COUNTY	LOCATION	MARKED NUMBER	6 TO 15 UNITS DIAMETER (UNITS)	OVER 15 UNITS DIAMETER (UNITS)	URBAN/RURAL
FARMER CITY INTERCHANGE						
I-74	DEWITT	N/A	1*	10		RURAL
I-74	DEWITT	N/A	2*		23	RURAL
I-74	DEWITT	N/A	3*	15		RURAL
I-74	DEWITT	N/A	4*		17	RURAL
I-74	DEWITT	N/A	5	9		RURAL
I-74	DEWITT	N/A	6	15		RURAL
I-74	DEWITT	N/A	7	15		RURAL
I-74	DEWITT	N/A	8	13		RURAL
I-74	DEWITT	N/A	9	11		RURAL
I-74	DEWITT	N/A	10		20	RURAL
I-74	DEWITT	N/A	11	13		RURAL
I-74	DEWITT	N/A	12	15		RURAL
I-74	DEWITT	N/A	13	12		RURAL
I-74	DEWITT	N/A	14	15		RURAL
I-74	DEWITT	N/A	15	14		RURAL
SUBTOTAL				157	60	

*PREVIOUSLY PLANTED MITIGATION TREES AND EXISTING CRAB APPLE TREES WILL REQUIRE PROTECTION DURING REMOVAL

ROUTE	COUNTY	LOCATION	MARKED NUMBER	6 TO 15 UNITS DIAMETER (UNITS)	OVER 15 UNITS DIAMETER (UNITS)	URBAN/RURAL
MANSFIELD INTERCHANGE						
I-74	PIATT		*	450		RURAL
SUBTOTAL				450		

*THICKET OF ~45 TREES @ 10 UNITS

ROUTE	COUNTY	LOCATION	MARKED NUMBER	6 TO 15 UNITS DIAMETER (UNITS)	OVER 15 UNITS DIAMETER (UNITS)	URBAN/RURAL
I-74 MAINLINE						
I-74	PIATT	MM 164.2 @ SN 0041	1		17	RURAL
I-74	PIATT	MM 164.2 @ SN 0041	2	7		RURAL
I-74	PIATT	MM 164.2 @ SN 0041	3	12		RURAL
I-74	PIATT	MM 164.2 @ SN 0041	4	10		RURAL
I-74	PIATT	MM 164.2 @ SN 0041	5		20	RURAL
I-74	PIATT	MM 168.1WB	1		16	RURAL
I-74	PIATT	MM 168	2	10		RURAL
I-74	PIATT	MM 168	3	8		RURAL
I-74	PIATT	MM 168	4	10		RURAL
I-74	PIATT	MM 168	5	15		RURAL
I-74	PIATT	MM 168	6	8		RURAL
SUBTOTAL				80	53	

SCHEDULE OF QUANTITIES

CHAMPAIGN COUNTY

SHEET 1 OF 1

ROUTE	COUNTY	LOCATION	MARKED NUMBER	6 TO 15 UNITS DIAMETER (UNITS)	OVER 15 UNITS DIAMETER (UNITS)	URBAN/RURAL
I-74 MAINLINE						
I-74	CHAMPAIGN	MM 178	1		21	URBAN
I-74	CHAMPAIGN	MM 178	2		20	URBAN
I-74	CHAMPAIGN	MM 178	3		32	URBAN
I-74	CHAMPAIGN	MM 178	4		26	RURAL
I-74	CHAMPAIGN	MM 176	5		23	URBAN
I-74	CHAMPAIGN	PRAIRIE VIEW RD ON-RAMP INFIELD	6		18	URBAN
I-74	CHAMPAIGN	MM 169.3	7		22	URBAN
I-74	CHAMPAIGN	MM 169.3	8		23	URBAN
I-74	CHAMPAIGN	MM 169.4	9	15		URBAN
I-74	CHAMPAIGN	MM 169.2	10		19	URBAN
SUBTOTAL				15	204	

I-57 - MARKET STREET INTERCHANGE						
I-57	CHAMPAIGN	INTERCHANGE - MM 240	1	14		RURAL
I-57	CHAMPAIGN	INTERCHANGE - MM 240	2	14		RURAL
I-57	CHAMPAIGN	INTERCHANGE - MM 240	3		42	RURAL
I-57	CHAMPAIGN	INTERCHANGE - MM 240	4	15		RURAL
I-57	CHAMPAIGN	INTERCHANGE - MM 240	5		32	RURAL
I-57	CHAMPAIGN	INTERCHANGE - MM 240	6		20	RURAL
I-57	CHAMPAIGN	INTERCHANGE - MM 240	7		17	RURAL
I-57	CHAMPAIGN	INTERCHANGE - MM 240	8		17	RURAL
I-57	CHAMPAIGN	INTERCHANGE - MM 240	9		16	RURAL
I-57	CHAMPAIGN	INTERCHANGE - MM 240	10		19	RURAL
I-57	CHAMPAIGN	INTERCHANGE - MM 240	11	14		RURAL
I-57	CHAMPAIGN	INTERCHANGE - MM 240	12	14		RURAL
SUBTOTAL				71	163	

SUMMARY:		
I-55 McLEAN CO.	1257	353
55/74 McLEAN CO.	335	0
I-74 McLEAN CO.	1083	346
I-74 DEWITT CO.	333	168
I-74 PIATT CO.	530	53
I-74 CHAMPAIGN CO.	15	204
I-57 CHAMPAIGN CO.	71	163
TOTAL:	3624	1287

NOTE: MARKED NUMBER ARE TREES
AS MARKED IN THE FIELD