

F.A.U. RTE.	SECTION	COUNTY	TOTAL SHEETS	SHEET NO.
	14-00008-01-SW	WOODFORD	16	1
FED. ROAD DIST. NO.	ILLINOIS	CONTRACT NO. 89688		

VILLAGE OF GERMANTOWN HILLS

FANDEL ROAD SIDEWALK IMPROVEMENTS

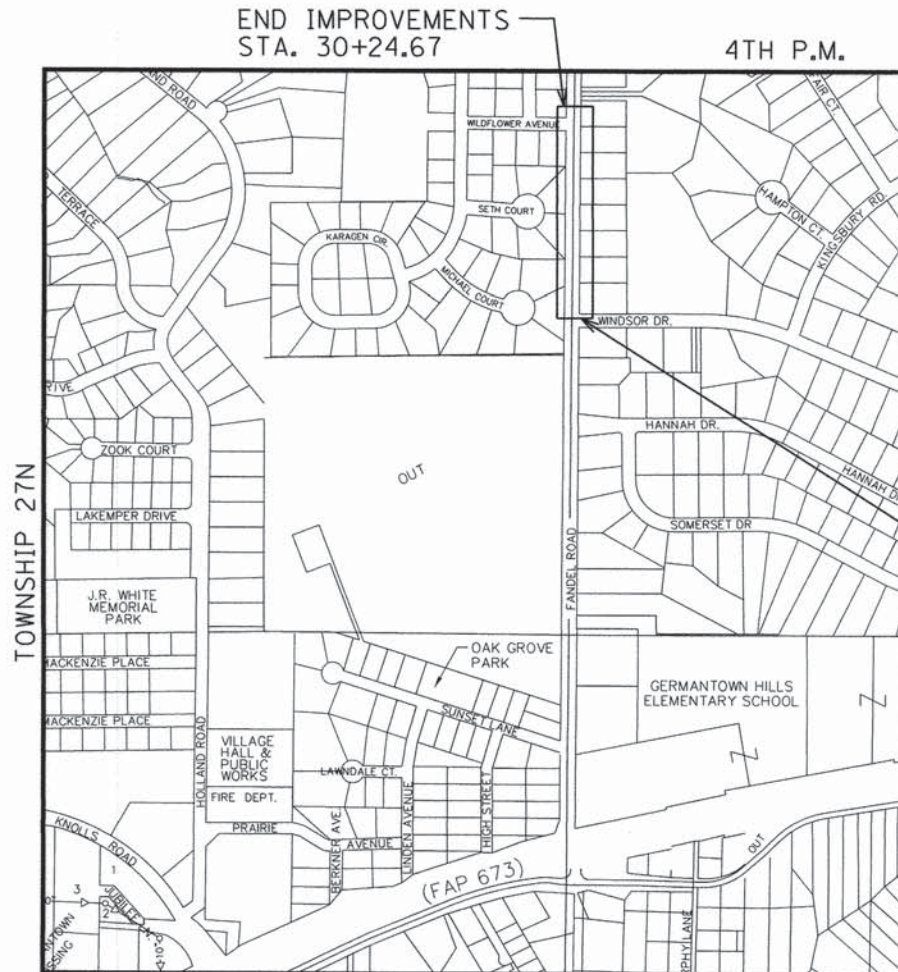
SECTION 14-00008-01-SW
PROJECT SRTS-4009(333)
JOB C-94-065-15
WOODFORD COUNTY, ILLINOIS

INDEX TO SHEETS

SHEET NO.	DESCRIPTION
1	COVER SHEET
2	GENERAL NOTES & SUMMARY OF QUANTITIES
3	SCHEDULE OF QUANTITIES
4-5	TYPICAL SECTION
6-7	PLAN AND PROFILE
8-9	DRAINAGE PLAN & PROFILE
10-16	CROSS SECTIONS

HIGHWAY STANDARD DETAIL PLANS

000001-06	ABBREVIATIONS, SYMBOLS AND PATTERNS
280001-07	TEMPORARY EROSION CONTROL SYSTEMS
424001-08	PERPENDICULAR CURB RAMPS FOR SIDEWALKS
424011-02	CORNER PARALLEL CURB RAMPS FOR SIDEWALKS
424021-03	DEPRESSED CORNER FOR SIDEWALKS
442201-03	CLASS C AND D PATCHES
602301-04	INLET - TYPE A
602306-03	INLET - TYPE B
602601-03	PRECAST REINFORCED CONCRETE FLAT SLAB TOP
604001-04	FRAME AND LID TYPE 1
604036-03	GRATE TYPE 8
604051-04	FRAME AND GRATE TYPE N 3V
606001-06	CONCRETE CURB TYPE B AND COMBINATION CONCRETE CURB AND GUTTER
701006-05	OFF-RD OPERATIONS, 2W, 2L, 15' TO 24" FROM PAVEMENT EDGE
701011-04	OFF-RD MOVING OPERATIONS, 2L, 2W, DAY ONLY
701301-04	LANE CLOSURE, 2L, 2W, SHORT TIME OPERATIONS
701326-04	LANE CLOSURE, 2L, 2W, PAVEMENT WIDENING, FOR SPEEDS OVER 45 MPH
701901-04	TRAFFIC CONTROL DEVICES
780001-05	TYPICAL PAVEMENT MARKINGS
701801-05	LANE CLOSURE, MULTILANE 1W OR 2W CROSSWALK OR SIDEWALK CLOSURE

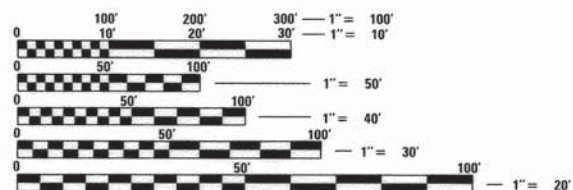


BEGIN IMPROVEMENTS
STA. 20+85.10

END IMPROVEMENTS
STA. 30+24.67

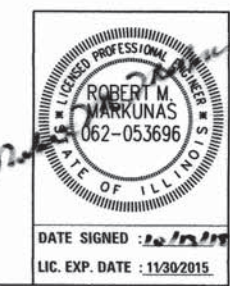
LOCATION MAP

FANDEL ROAD GROSS/NET LENGTH : = 940 L.F. (0.18 MILES)



FULL SIZE PLANS HAVE BEEN PREPARED USING STANDARD ENGINEERING SCALES. REDUCED SIZED PLANS WILL NOT CONFORM TO STANDARD SCALES. IN MAKING MEASUREMENTS ON REDUCED PLANS, THE ABOVE SCALES MAY BE USED.

J.U.L.I.E.
JOINT UTILITY LOCATION INFORMATION FOR EXCAVATION
1-800-892-0123
OR 811



AGENCY RESPONSIBLE FOR LETTING	
APPROVED <i>10/13/15</i> 2015	
<i>Paul Bruch</i> VILLAGE OF GERMANTOWN HILLS, SUPERINTENDENT OF PUBLIC WORKS	
PASSED <i>Oct. 23</i> 2015	
<i>Ray Gassio</i> DISTRICT 4 ENGINEER OF LOCAL ROADS AND STREETS	
RELEASING FOR BID BASED ON LIMITED REVIEW	<i>10/23</i> 2015
<i>Kenneth G. Garnett</i> DEPUTY DIRECTOR OF HIGHWAYS, REGION 3 ENGINEER	

CONTRACT NO. 89688
CATALOG NO. 033865

GENERAL NOTES

1. THE LOCATION OF DRAINAGE STRUCTURES, STORM SEWERS, WATER MAINS, SANITARY SEWERS, AND OTHER PUBLIC OR PRIVATE UTILITIES AS SHOWN ON THE PLANS IS APPROXIMATE AND THEIR EXACT LOCATION IS TO BE DETERMINED IN THE FIELD BY THE CONTRACTOR. THIS WORK SHALL BE PERFORMED AT NO ADDITIONAL COST TO THE CONTRACT.
2. THE CONTRACTOR SHALL NOTIFY ALL UTILITY COMPANIES OF THE CONSTRUCTION SCHEDULE PRIOR TO BEGINNING CONSTRUCTION. UTILITY OWNERS SHALL BE REQUESTED TO RELOCATE THEIR FACILITIES IN COOPERATION WITH THE CONTRACTORS ACTIVITIES. THE CONTRACTOR IS RESPONSIBLE FOR PROTECTING THESE FACILITIES FROM DAMAGE DURING CONSTRUCTION OF THE ROADWAY IMPROVEMENTS. ALL UTILITY LOCATIONS SHOWN MUST BE VERIFIED BY THE CONTRACTOR IN THE FIELD.
3. ALL AREAS DISTURBED DURING CONSTRUCTION OPERATIONS AND NOT PART OF THE WORK AS SHOWN HEREIN SHALL BE RESTORED TO ORIGINAL CONDITION TO THE SATISFACTION OF THE ENGINEER AT NO ADDITIONAL COST. IT IS INCUMBENT UPON THE CONTRACTOR TO SHOW THAT DAMAGED AREAS WERE NOT DISTURBED BY CONSTRUCTION OPERATIONS.
4. THE CONTRACTOR SHALL TAKE ALL NECESSARY SAFETY PRECAUTIONS TO PROTECT CONSTRUCTION WORKERS, ABUTTING PROPERTY, UTILITIES, PEDESTRIANS, AND VEHICLES.
5. THE CONTRACTOR IS RESPONSIBLE FOR COORDINATING WITH UTILITY COMPANIES TO CAUSE THE ADJUSTMENT, RELOCATION, OR REMOVAL OF EXISTING UTILITIES AS NECESSARY TO ALLOW CONSTRUCTION OF THE PROPOSED IMPROVEMENTS IDENTIFIED IN THESE PLANS.
6. CONTRACTOR IS RESPONSIBLE FOR REMOVAL, STORAGE, AND RE-INSTALLATION OF ALL EXISTING SIGNAGE AND OTHER ITEMS THAT ARE IMPACTED BY THIS CONTRACT AND ARE NOT SHOWN AS BEING REPLACED. THE LOCATION OF RE-INSTALLED SIGNAGE IS TO BE DETERMINED BY THE ENGINEER. THE CONTRACTOR IS RESPONSIBLE FOR REPLACING ANY OF THESE ITEMS THAT ARE DAMAGED AS A RESULT OF THIS CONTRACT AT NO ADDITIONAL COST. THE REMOVAL AND RE-INSTALLATION OF THESE ITEMS SHALL BE PERFORMED AT NO ADDITIONAL COST TO THE CONTRACT.
7. THE CONTRACTOR SHALL MAINTAIN TWO-WAY TRAFFIC ON FANDEL ROAD THROUGHOUT THE DURATION OF CONSTRUCTION.
8. CONTRACTOR MUST SAWCUT FOR SIDEWALK AT EXISTING PAVEMENTS AT LOCATIONS SHOWN ON THE PLANS TO AVOID DAMAGE TO ADJACENT ROADWAYS.
9. ANY REFERENCE TO A STANDARD IN THESE PLANS SHALL BE INTERPRETED TO MEAN THE EDITION AS INDICATED BY THE SUBNUMBER SHOWN IN THE LIST OF STANDARDS OR THE COPY INCLUDED IN THESE PLANS.
10. CONTRACTOR SHALL DISPOSE OF ALL CONSTRUCTION DEBRIS IN CONFORMANCE WITH CURRENT IEPA REGULATIONS.
11. EXISTING TRAFFIC CONTROL SIGNS AND DEVICES THAT ARE IN CONFLICT WITH CONSTRUCTION TRAFFIC CONTROL SIGNS AND DEVICES SHALL BE REMOVED OR COVERED BY THE CONTRACTOR ONCE THE CONSTRUCTION TRAFFIC CONTROL SYSTEM IS IN PLACE. ANY SIGNS OR DEVICES LEFT IN PLACE ARE TO BE PROTECTED FROM DAMAGE DURING CONSTRUCTION. ANY DAMAGED SIGNS OR DEVICES SHALL BE REPAIRED OR REPLACED BY THE CONTRACTOR.
12. THE CONTRACTOR MUST CONTACT J.U.L.I.E. AT LEAST 48 HOURS BEFORE EXCAVATING ANY MATERIAL OR BORING OPERATIONS.
13. ALL REMOVED DRIVEWAY CULVERTS SHALL BE RETURNED TO THE VILLAGE OF GERMANTOWN HILLS PUBLIC WORKS GARAGE AT 216 HOLLAND ROAD, GERMANTOWN HILLS, IL.
14. ACCESS TO EACH PROPERTY SHALL BE PROVIDED AT ALL TIMES BY A MINIMUM 10' WIDE DRIVEWAY.

DISTRICT 4 GENERAL NOTES

1. ENVIRONMENTAL REVIEWS - PRIOR TO THE USE OF ANY PROPOSED BORROW AREAS, USE AREAS (TEMPORARY ACCESS ROADS, DETOURS, RUN-AROUNDS, ETC.) AND/OR WASTE AREAS, THE CONTRACTOR SHALL FILE THE REQUIRED ENVIRONMENTAL RESOURCE REQUEST SURVEYS ACCORDING TO SECTION 107.22 OF THE STANDARD SPECIFICATIONS. THESE SURVEYS ARE REQUIRED IN ORDER FOR THE DEPARTMENT TO CONDUCT CULTURAL AND BIOLOGICAL RESOURCE SURVEYS FOR THE PROPOSED SITE.

PRIOR TO ANY WASTE MATERIALS BEING REMOVED FROM THE CONSTRUCTION SITE THE REQUIRED ENVIRONMENTAL RESOURCE SURVEYS WILL NEED TO BE OBTAINED AND FILED BY THE CONTRACTOR. EXCESS WASTE PRODUCTS REMOVED FROM THE CONSTRUCTION SITE SHALL BE DISPOSED OF AS REQUIRED IN SECTION 202.03 OF THE STANDARD SPECIFICATIONS.

ANY PROTRUDING METAL BARS SHALL BE REMOVED PRIOR TO THE DISPOSAL OF BROKEN CONCRETE AT APPROVED DISPOSAL SITES.

THE REQUIRED ENVIRONMENTAL RESOURCE DOCUMENTATION SHALL INCLUDE THE FOLLOWING:

- BDE FORM 2289 (ENVIRONMENTAL SURVEY REQUEST)
- BDE FORM 2290 (WASTE/USE AREA REVIEW)
- A LOCATION MAP SHOWING THE SIZE LIMITS AND LOCATION OF THE USE AREA
- COLOR PHOTOGRAPHS DEPICTING THE USE AREA
- BORROW AREA ENTRY AGREEMENT FORM-D4 P10101

PLEASE NOTE THAT A MINIMUM OF FOUR WEEKS SHALL BE ALLOWED FOR THE DISTRICT TO OBTAIN THE REQUIRED ENVIRONMENTAL CLEARANCES AND SIX WEEKS FOR THE REQUIRED BORROW SITE ENVIRONMENTAL CLEARANCES.

SUMMARY OF QUANTITIES

SP	Code No.	Description	Unit	Total Qty
	20200100	EARTH EXCAVATION	CU YD	104
	20400800	FURNISHED EXCAVATION	CU YD	200
	20800150	TRENCH BACKFILL	CU YD	150
	25000400	NITROGEN FERTILIZER NUTRIENT	POUND	18
	25000500	PHOSPHORUS FERTILIZER NUTRIENT	POUND	18
	25000600	POTASSIUM FERTILIZER NUTRIENT	POUND	18
	25200110	SODDING, SALT TOLERANT	SQ YD	849
	28000400	PERIMETER EROSION BARRIER	FOOT	829
	28000500	INLET AND PIPE PROTECTION	EACH	8
	31100100	SUBBASE GRANULAR MATERIAL, TYPE A	TON	369
	42300200	PORTLAND CEMENT CONCRETE DRIVEWAY PAVEMENT, 6 INCH	SQ YD	251
	42400100	PORTLAND CEMENT CONCRETE SIDEWALK 4 INCH	SQ FT	3,873
	42400800	DETECTABLE WARNINGS	SQ FT	50
	44000200	DRIVEWAY PAVEMENT REMOVAL	SQ YD	268
	44000600	SIDEWALK REMOVAL	SQ FT	42
	44201771	CLASS D PATCHES, TYPE IV, 10 INCH	SQ YD	222
	50105220	PIPE CULVERT REMOVAL	FOOT	212
	60240215	INLETS, TYPE B, TYPE 1 FRAME, CLOSED LID	EACH	1
	60240301	INLETS, TYPE B, TYPE 8 GRATE	EACH	5
	60604400	COMBINATION CONCRETE CURB AND GUTTER, TYPE B-6.18	FOOT	969
	67100100	MOBILIZATION	LSUM	1
	70103815	TRAFFIC CONTROL SURVEILLANCE	CAL DA	10
	72000100	SIGN PANEL - TYPE 1	SQ FT	8
	72800100	TELESCOPING STEEL SIGN SUPPORT	FOOT	30
Δ	78001130	PAINT PAVEMENT MARKING - LINE 6"	FOOT	128
	X6020074	INLETS, TYPE A, TYPE 3V FRAME AND GRATE	EACH	2
*	X7010216	TRAFFIC CONTROL AND PROTECTION, (SPECIAL)	LSUM	1
*	XX006616	LANDSCAPE REMOVAL	EACH	4
*	Z0013798	CONSTRUCTION LAYOUT	LSUM	1
*	Z0056646	STORM SEWERS, TYPE 1, WATER MAIN QUALITY PIPE, 10"	FOOT	2
*	Z0056648	STORM SEWERS, TYPE 1, WATER MAIN QUALITY PIPE, 12"	FOOT	770

Δ SPECIALTY ITEMS

DISTRICT 4 GENERAL NOTES (CONT.)

2. ORDERING LENGTH CONFIRMATION - DRAINAGE ITEMS - THE CONTRACTOR SHALL CONSULT WITH THE ENGINEER IN REGARD TO THE EXACT LENGTH OF THE BOX/PIPE CULVERTS, STORM SEWERS, AND/OR PIPE DRAINS REQUIRED PRIOR TO ORDERING THESE ITEMS.
3. PLAN ELEVATIONS - ALL ELEVATIONS SHOWN REFER TO U.S.G.S. DATUM AT MEAN SEA LEVEL UNLESS OTHERWISE NOTED.
4. COMMITMENTS - COMMITMENTS ARE NOT TO BE ALTERED WITHOUT THE WRITTEN APPROVAL OF ALL PARTIES TO WHICH THE COMMITMENT WAS MADE.
5. PROPERTY OWNER ACCESS REQUIREMENTS - ACCESS MUST BE MAINTAINED TO ALL EXISTING PROPERTIES DURING CONSTRUCTION PER ARTICLE 107.09 UNLESS ARRANGEMENTS ARE MADE IN WRITING BY THE CONTRACTOR WITH THE PROPERTY OWNERS WITH A COPY TO THE ENGINEER FOR SHORT-TERM CLOSURES.

DIRECTORY: I:\Users\mshelton\OneDrive\Documents\CAD_Sheet...
 USER: NAME: Robert L. Markopoulos



MODEL NAME = Default	DESIGNED - RMM	REVISED -
FILE NAME = gen_notes.dgn	DRAWN - AWH	REVISED -
PLOT SCALE = 10.0000 / 1 in = 100 ft	CHECKED - E.JH	REVISED -
PLOT DATE = 10/13/2015 08:14:59 AM	DATE - OCTOBER 2015	REVISED -

**VILLAGE OF GERMANTOWN HILLS
WOODFORD COUNTY, ILLINOIS**

GENERAL NOTES AND SUMMARY OF QUANTITIES

SCALE: SHEET 1 OF 1 SHEETS STA. TO STA.

F.A. RTE.	SECTION	COUNTY	TOTAL SHEETS	SHEET NO.
	14-00008-01-SW	WOODFORD	16	2
CONTRACT NO. 89688			ILLINOIS FED. AID PROJECT	

PROPOSED DRAINAGE PIPE QUANTITIES											
UPSTREAM			DOWNTREAM			LENGTH	SLOPE	DIAMETER	TYPE	TRENCH BACKFILL (CU YD.)	
STRUCTURE		INVERT	STRUCTURE		INVERT						
STATION	O/S		STATION	O/S							
22+50	26.5'	RT	23+70	27.0'	RT	771.37	117'	2.38%	12"	TYPE 1, WATER MAIN QUALITY	22.9
23+70	27.0'	RT	24+80	27.1'	RT	768.82	107'	2.38%	12"	TYPE 1, WATER MAIN QUALITY	20.8
24+80	27.1'	RT	25+90	28.5'	RT	766.27	107'	2.38%	12"	TYPE 1, WATER MAIN QUALITY	20.8
25+90	13.0'	RT	25+90	28.5'	RT	766.27	13'	1.00%	12"	TYPE 1, WATER MAIN QUALITY	2.5
25+90	28.5'	RT	28+00	26.4'	RT	764.84	207'	0.69%	12"	TYPE 1, WATER MAIN QUALITY	40.2
30+21.50	13.0'	RT	30+21.50	17.4'	RT	762.39	2'	2.00%	10"	TYPE 1, WATER MAIN QUALITY	0.4
28+00	26.4'	RT	30+21.50	17.4'	RT	762.39	219'	1.12%	12"	TYPE 1, WATER MAIN QUALITY	42.5

REMOVAL SCHEDULE					
STATION	OFFSET	DRIVEWAY PAVEMENT REMOVAL	SIDEWALK REMOVAL	PIPE CULVERT REMOVAL	LANDSCAPE REMOVAL
		44000200 SQ YD	44000600 SQ FT	50105220 FOOT	XX006616 EACH
20+82	RT		42		
22+67.34	RT	37		26	
23+84.25	RT	34		36	
24+88	RT				1
25+00.59	RT	31		30	
25+12	RT				1
25+72	RT				1
26+11.28	RT	29		34	
26+77	RT				1
27+53.72	RT	43		28	
28+28.96	RT	52		30	
29+60.11	RT	42		28	
TOTAL:		268	42	212	4

INLET AND PIPE PROTECTION SCHEDULE			
STATION	OFFSET		EACH
22+50	26.5'	RT	1.0
23+70	27.0'	RT	1.0
24+80	27.1'	RT	1.0
25+90	13.5'	RT	1.0
25+90	28.5'	RT	1.0
28+00	28.9'	RT	1.0
30+21.5	17.4'	RT	1.0
30+21.5	13.5'	RT	1.0
TOTAL:			8

PAVEMENT MARKING SCHEDULE						
STATION	OFFSET		STATION	OFFSET		PAINT PAVEMENT MARKING - LINE 6"
						78001130 FOOT
29+76.60	12'	RT	29+76.60	15.1'	LT	27.1
29+84.60	12'	RT	29+84.60	16.1'	LT	28.1
29+84.60	16.1'	LT	30+24.70	16.1'	LT	40.1
29+85.72	22.1'	LT	30+18.70	22.1'	LT	33.0
TOTAL:						128

PROPOSED QUANTITIES SCHEDULE								
STATION	OFFSET		STATION	OFFSET	PCC SIDEWALK, 4 INCH	DETECTABLE WARNINGS	CLASS D PATCH, TYPE IV, 10"	COMBINATION CONCRETE CURB AND GUTTER, TYPE B-6.18
					42400100 SQ FT	42400800 SQ FT	44201771 SQ YD	60604400 FOOT
20+70.64	45.3'	RT	30+24.67	12.0'	RT		222.0	969.0
20+85.10	25.4'	RT	22+57.34	16.1'	RT	864.8	10.0	
22+77.34	16.1'	RT	23+74.25	16.1'	RT	484.6		
23+94.25	16.1'	RT	24+90.59	16.1'	RT	481.7		
25+10.59	16.1'	RT	26+01.28	16.1'	RT	453.5		
26+21.28	16.1'	RT	27+43.72	16.1'	RT	612.2		
27+63.72	16.1'	RT	28+18.96	16.1'	RT	276.2		
28+38.96	16.1'	RT	29+50.11	16.1'	RT	555.8		
29+70.11	16.1'	RT	29+83.11	16.1'	RT	75.0	10.0	
29+76.56	15.1'	LT	29+84.55	22.1'	LT	35.6	19.8	
30+19.02	21.7'	LT	30+28.66	16.7'	LT	33.5	10.0	
TOTAL:					3873	50	222	969

PROPOSED DRAINAGE STRUCTURE SCHEDULE						
STATION	O/S	PAY ITEM DESCRIPTION	RIM ELEV.	STRUCTURE INVERT ELEV.	FLAT SLAB TOP	
22+50	26.5'	RT	INLETS TB T8G	776.15	774.15	YES
23+70	27.0'	RT	INLETS TB T8G	773.90	771.37	YES
24+80	27.1'	RT	INLETS TB T8G	771.38	768.82	YES
25+90	13.0'	RT	INLETS TA T3V F&G	770.78	766.40	NO
25+90	28.5'	RT	INLETS TB T8G	769.27	766.27	YES
28+00	26.4'	RT	INLETS TB T8G	768.14	764.84	YES
30+21.50	13.0'	RT	INLETS TA T3V F&G	764.20	762.43	NO
30+21.50	17.4'	RT	INLETS TB T1F CL	765.39	762.39	YES

DIRECTORY: L:\Germantown Hills\15021-05-00\Drawings\Drawings\...
 USER NAME: Rober...
 License No. 181-00013



MODEL NAME = Default
 FILE NAME = schedule of quantities.dgn
 PLOT SCALE = 10.0000' / 1" = 100'
 PLOT DATE = 10/13/2015 2:03:37 PM

DESIGNED - RMM
 DRAWN - AWH
 CHECKED - EJH
 DATE - OCTOBER 2015

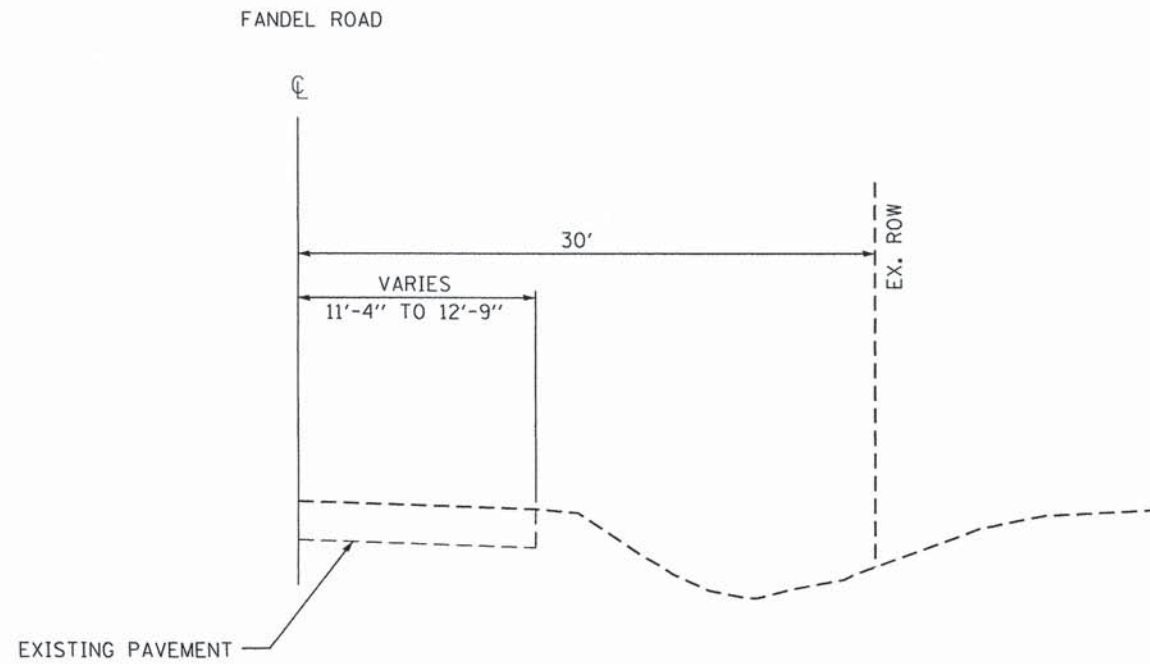
REVISED -
 REVISED -
 REVISED -
 REVISED -

VILLAGE OF GERMANTOWN HILLS
WOODFORD COUNTY, ILLINOIS

SCHEDULE OF QUANTITIES

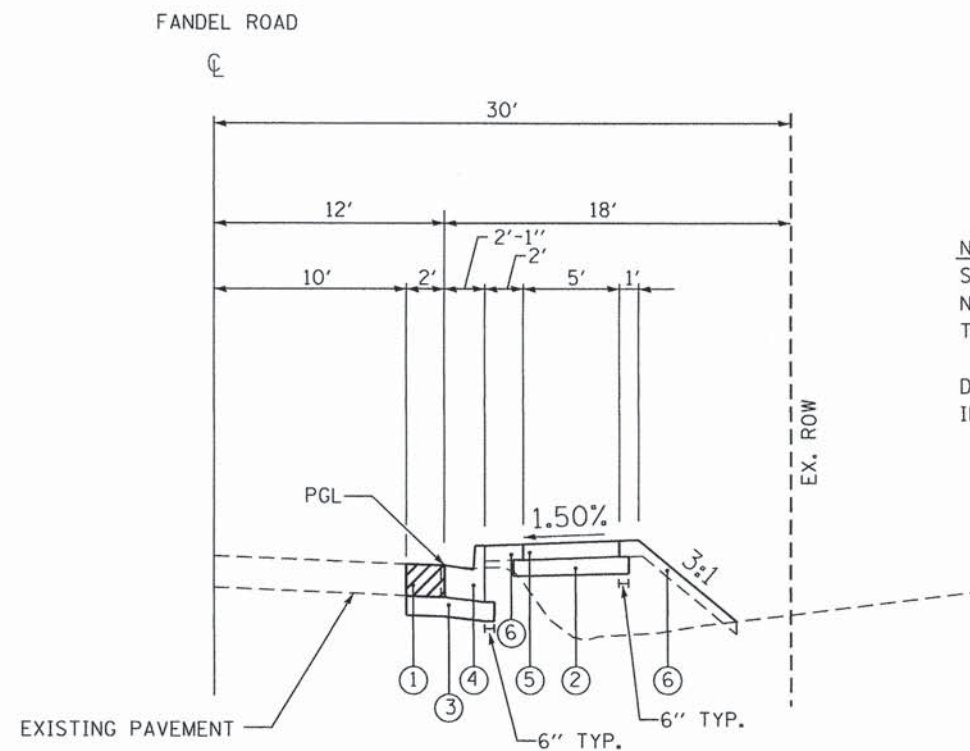
SCALE: SHEET 1 OF 1 SHEETS STA. TO STA.

F.A. RTE.	SECTION	COUNTY	TOTAL SHEETS	SHEET NO.
	14-0008-01-SW	WOODFORD	16	3
ILLINOIS FED. AID PROJECT			CONTRACT NO. 89688	



EXISTING TYPICAL SECTION

STA. 21+14.10 TO STA. 30+24.67



PROPOSED TYPICAL SECTION

STA. 21+14.10 TO STA. 30+24.67

NOTES:
 SIDEWALKS INSTALLED AT A SLOPE GREATER THAN 2.00% OR OTHERWISE NOT MEETING ADA AND PROWAG REQUIREMENTS SHALL BE REMOVED AT THE CONTRACTOR'S EXPENSE.

DISTURBED AREAS BEHIND THE CURB SHALL BE SODDED AND FERTILIZED IN ACCORDANCE WITH THE STANDARD SPECIFICATIONS.

LEGEND

- ① PROPOSED CLASS D PATCH, TYPE IV, 10"
- ② PROPOSED SUBBASE GRANULAR MATERIAL, TYPE A, 4"
- ③ PROPOSED SUBBASE GRANULAR MATERIAL, TYPE A, 6"
- ④ PROPOSED CONCRETE CURB AND GUTTER, TYPE B-6.18
- ⑤ PROPOSED PORTLAND CEMENT CONCRETE SIDEWALK, 4"
- ⑥ PROPOSED SODDING

DIRECTORY USER NAME: Robert, MarKunas



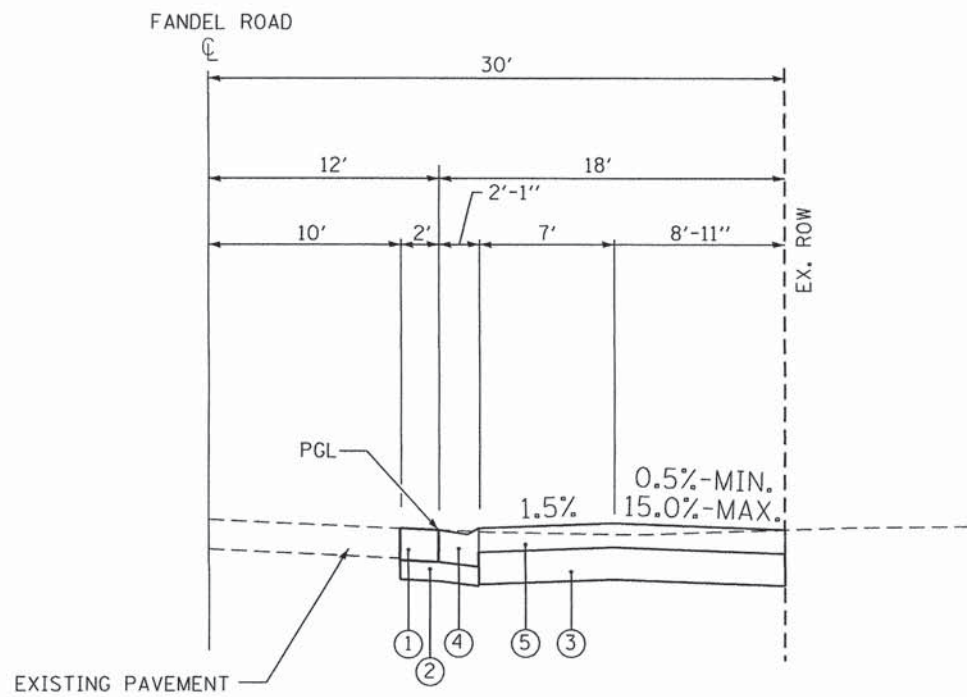
MODEL NAME =	DESIGNED - RMM	REVISED -
FILE NAME =	DRAWN - AWH	REVISED -
PLOT SCALE = 5.0000' / in.	CHECKED - EJH	REVISED -
PLOT DATE = 10/13/2015 8:56:20 AM	DATE - OCTOBER 2015	REVISED -

VILLAGE OF GERMANTOWN HILLS
 WOODFORD COUNTY, ILLINOIS

FANDEL ROAD SIDEWALK
 TYPICAL SECTIONS

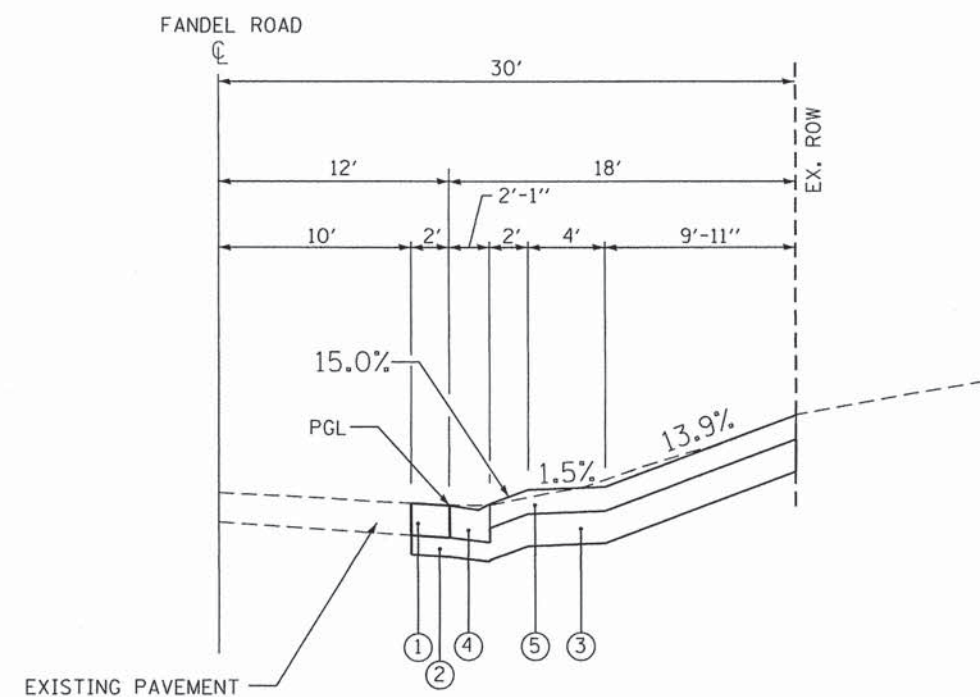
F.A. RTE.	SECTION	COUNTY	TOTAL SHEETS	SHEET NO.
	14-00008-01-SW	WOODFORD	16	4
CONTRACT NO.			B9688	
ILLINOIS FED. AID PROJECT				

SCALE: SHEET 1 OF 2 SHEETS STA. TO STA.



TYPICAL SECTION – PRIVATE ENTRANCE

STA. 22+67.34
 STA. 23+84.25
 STA. 25+00.59
 STA. 27+53.72
 STA. 28+28.96

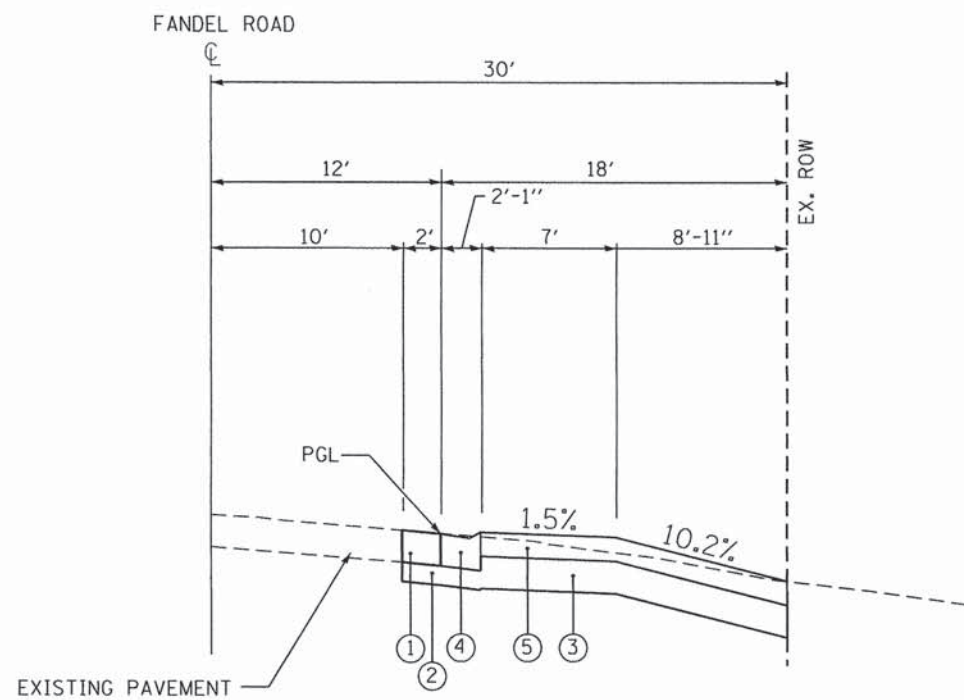


TYPICAL SECTION – PRIVATE ENTRANCE

STA. 29+60.11

LEGEND

- ① PROPOSED CLASS D PATCH, TYPE IV, 10"
- ② PROPOSED SUBBASE GRANULAR MATERIAL, TYPE A, 6"
- ③ PROPOSED SUBBASE GRANULAR MATERIAL, TYPE A, 8"
- ④ PROPOSED CONCRETE CURB AND GUTTER, TYPE B-6.18 (DEPRESSED)
- ⑤ PROPOSED PORTLAND CEMENT CONCRETE DRIVEWAY PAVEMENT, 6"



TYPICAL SECTION – PRIVATE ENTRANCE

STA. 26+11.28

DIRECTORY *
 USER NAME *
 Robert Mar-Kunas



MODEL NAME =	DESIGNED - RMM	REVISED -
FILE NAME =	DRAWN - AWH	REVISED -
PLOT SCALE = 5.0000" / 1"	CHECKED - E.JH	REVISED -
PLOT DATE = 10/12/2015 4:48:34 PM	DATE - OCTOBER 2015	REVISED -

**VILLAGE OF GERMANTOWN HILLS
 WOODFORD COUNTY, ILLINOIS**

**FANDEL ROAD SIDEWALK
 TYPICAL SECTIONS**

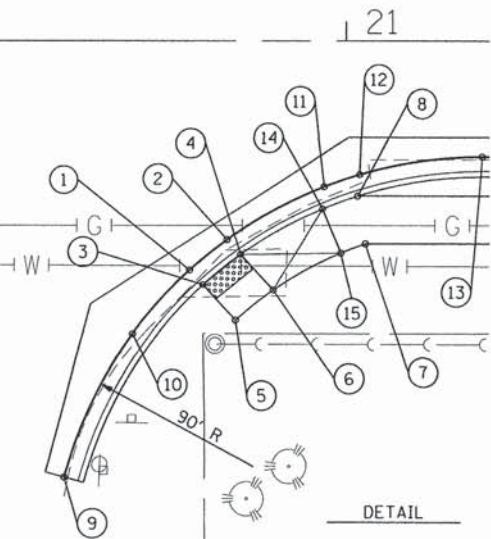
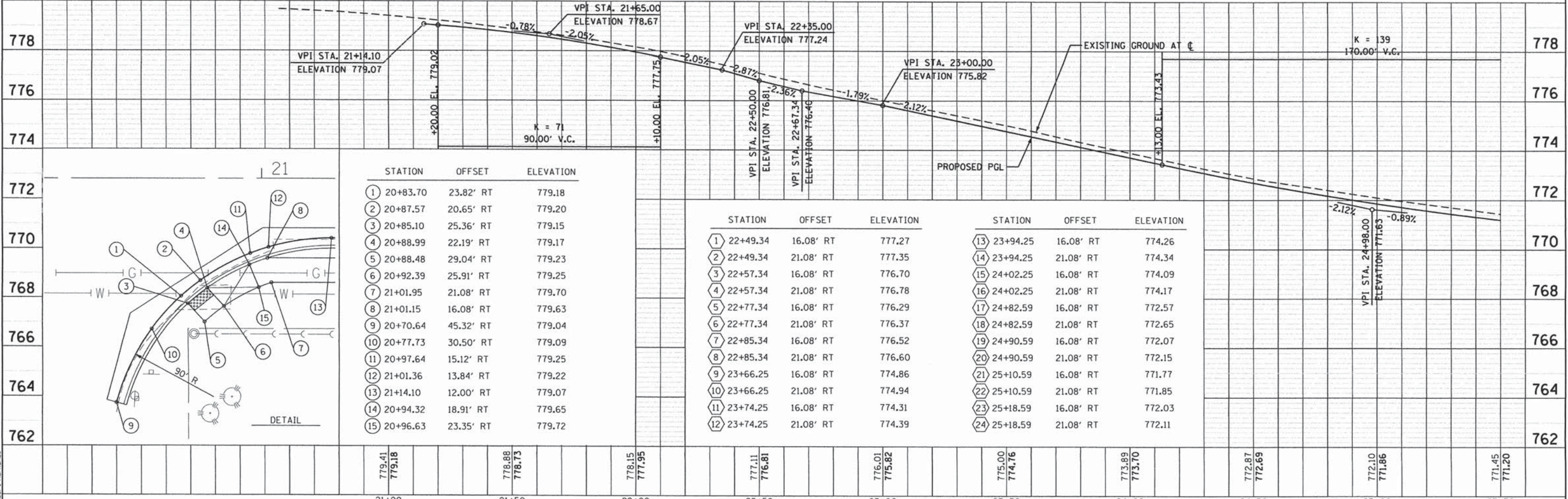
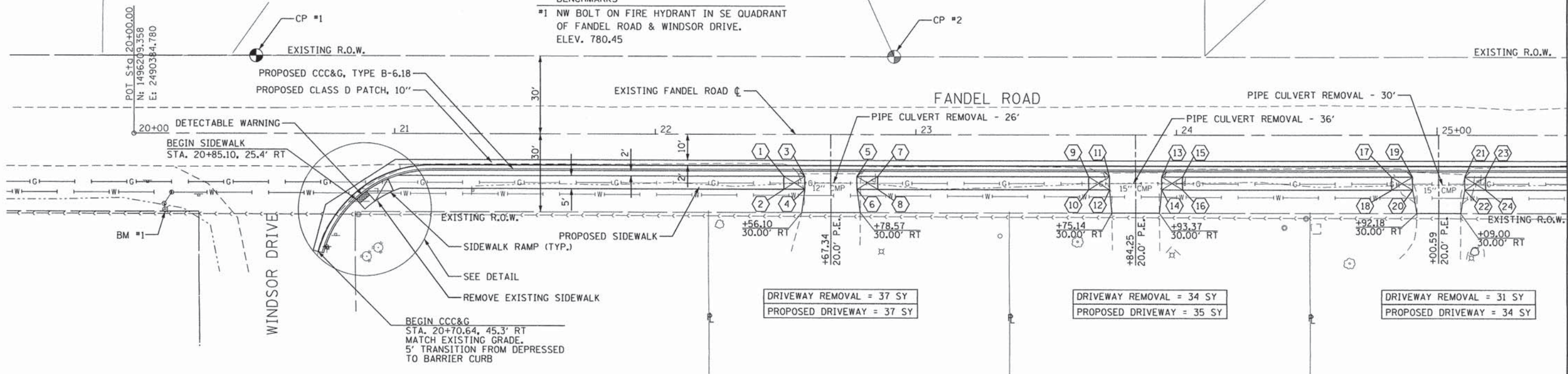
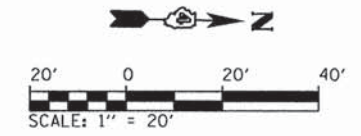
SCALE: SHEET 2 OF 2 SHEETS STA. TO STA.

F.A. RTE.	SECTION	COUNTY	TOTAL SHEETS	SHEET NO.
	14-00008-01-SW	WOODFORD	16	5
CONTRACT NO. 89688			ILLINOIS FED. AID PROJECT	

NOTE: ALL EXISTING MAILBOXES WITHIN THE PROJECT LIMITS SHALL BE REMOVED AND REINSTALLED AS DIRECTED BY THE ENGINEER.

CONTROL POINTS
 #1 N: 1496255.71 E: 2490353.94 STA. 20+46.90 O/S: 30.00' LT
 #2 N: 1496500.42 E: 2490349.50 STA. 22+91.66 O/S: 30.00' LT

BENCHMARKS
 #1 NW BOLT ON FIRE HYDRANT IN SE QUADRANT OF FANDEL ROAD & WINDSOR DRIVE. ELEV. 780.45



STATION	OFFSET	ELEVATION	
1	20+83.70	23.82' RT	779.18
2	20+87.57	20.65' RT	779.20
3	20+85.10	25.36' RT	779.15
4	20+88.99	22.19' RT	779.17
5	20+88.48	29.04' RT	779.23
6	20+92.39	25.91' RT	779.25
7	21+01.95	21.08' RT	779.70
8	21+01.15	16.08' RT	779.63
9	20+70.64	45.32' RT	779.04
10	20+77.73	30.50' RT	779.09
11	20+97.64	15.12' RT	779.25
12	21+01.36	13.84' RT	779.22
13	21+14.10	12.00' RT	779.07
14	20+94.32	18.91' RT	779.65
15	20+96.63	23.35' RT	779.72

STATION	OFFSET	ELEVATION	
1	22+49.34	16.08' RT	777.27
2	22+49.34	21.08' RT	777.35
3	22+57.34	16.08' RT	776.70
4	22+57.34	21.08' RT	776.78
5	22+77.34	16.08' RT	776.29
6	22+77.34	21.08' RT	776.37
7	22+85.34	16.08' RT	776.52
8	22+85.34	21.08' RT	776.60
9	23+66.25	16.08' RT	774.86
10	23+66.25	21.08' RT	774.94
11	23+74.25	16.08' RT	774.31
12	23+74.25	21.08' RT	774.39

STATION	OFFSET	ELEVATION	
13	23+94.25	16.08' RT	774.26
14	23+94.25	21.08' RT	774.34
15	24+02.25	16.08' RT	774.09
16	24+02.25	21.08' RT	774.17
17	24+82.59	16.08' RT	772.57
18	24+82.59	21.08' RT	772.65
19	24+90.59	16.08' RT	772.07
20	24+90.59	21.08' RT	772.15
21	25+10.59	16.08' RT	771.77
22	25+10.59	21.08' RT	771.85
23	25+18.59	16.08' RT	772.03
24	25+18.59	21.08' RT	772.11

DATE	
BY	
DESIGNED	
DRAWN	
CHECKED	
DATE	

DATE	
BY	
DESIGNED	
DRAWN	
CHECKED	
DATE	

DIRECTORY # L:\GermantownHills\1921-01-00\Drawings\Sheet...
 USER NAME: Robert M. Kucenas



MODEL NAME = Sheet1
 FILE NAME = Fandel_Prop.dgn
 PLOT SCALE = 20.00000' / 1" = 20'
 PLOT DATE = 10/13/2015 2:48:49 PM

DESIGNED - RMM
 DRAWN - AWH
 CHECKED - E.JH
 DATE - OCTOBER 2015

REVISED -
 REVISED -
 REVISED -
 REVISED -

VILLAGE OF GERMANTOWN HILLS
 WOODFORD COUNTY, ILLINOIS

FANDEL ROAD SIDEWALK
 PLAN AND PROFILE

SCALE: 1" = 20' SHEET 1 OF 2 SHEETS STA. TO STA.

F.A.U. RTE.	SECTION	COUNTY	TOTAL SHEETS	SHEET NO.
	14-00008-01-SW	WOODFORD	16	6
CONTRACT NO. 89688			ILLINOIS FED. AID PROJECT	

DATE	
BY	
REVISIONS	
NO.	
DESCRIPTION	
DATE	
BY	
DATE	
BY	

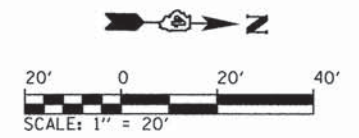
DATE	
BY	
REVISIONS	
NO.	
DESCRIPTION	
DATE	
BY	
DATE	
BY	

DIRECTORY = L:\Germantown Hills\1001-00-00\Draw\0000_Sheet1.dwg
 USER NAME = Robert M. Rucinas

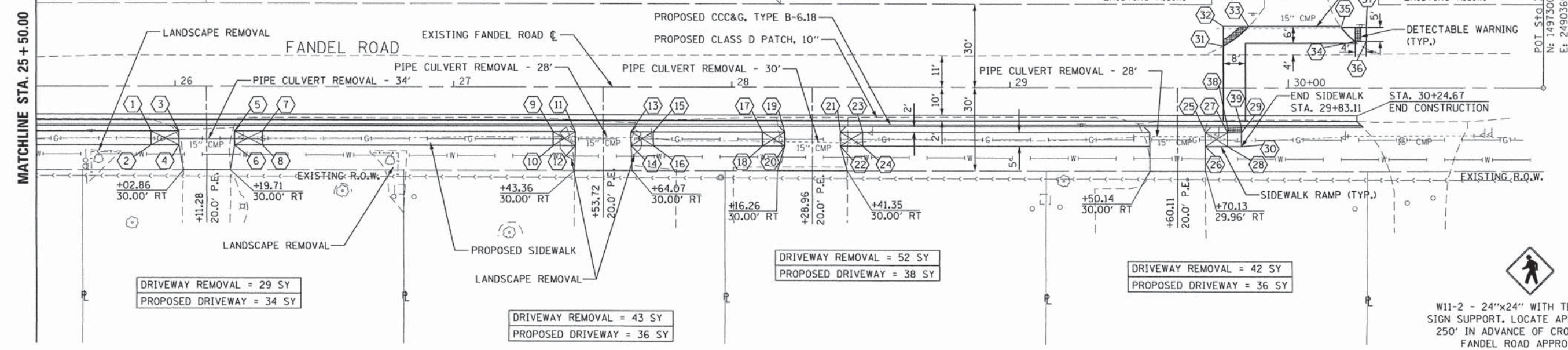
NOTE: ALL EXISTING MAILBOXES WITHIN THE PROJECT LIMITS SHALL BE REMOVED AND REINSTALLED AS DIRECTED BY THE ENGINEER.

NOTE: ALL LANDSCAPING FEATURES LOCATED WITHIN THE RIGHT-OF-WAY SHALL BE REMOVED AND RETURNED TO THE ADJACENT PROPERTY OWNER.

BENCHMARKS
 #2 BOLT IN WORD "MUELLER" ON HYDRANT IN SW QUADRANT OF FANDEL ROAD & WILDFLOWER AVE.
 ELEV. 766.91



MATCHLINE STA. 25 + 50.00



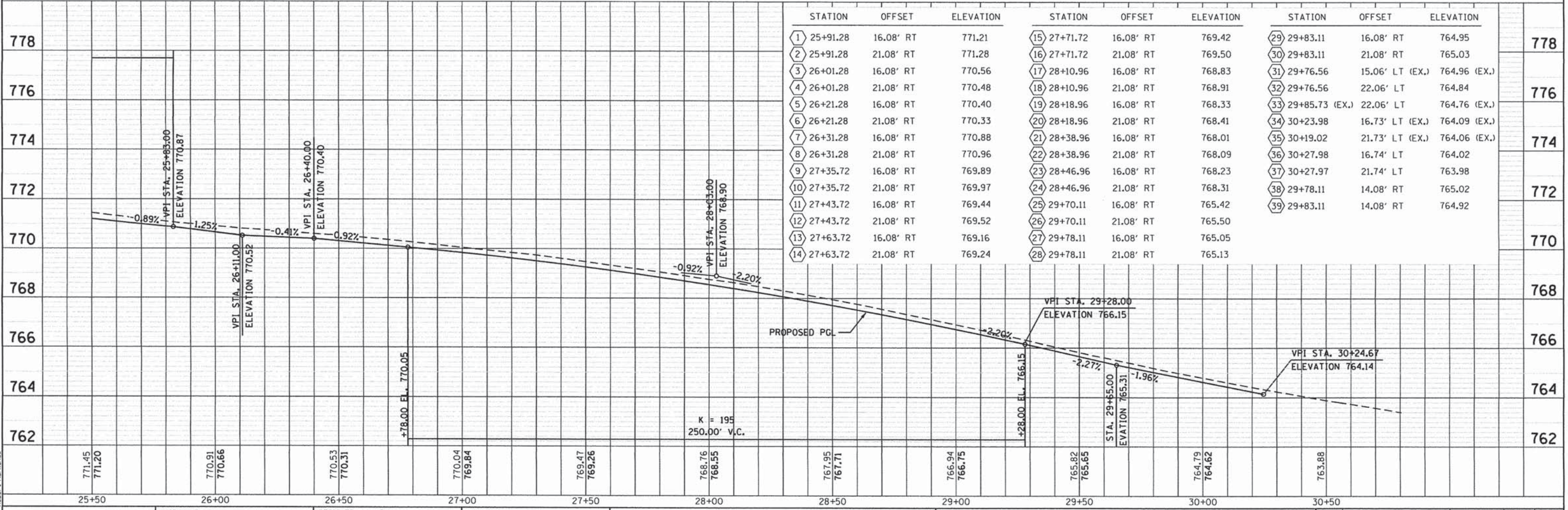
DRIVEWAY REMOVAL = 29 SY
 PROPOSED DRIVEWAY = 34 SY

DRIVEWAY REMOVAL = 43 SY
 PROPOSED DRIVEWAY = 36 SY

DRIVEWAY REMOVAL = 52 SY
 PROPOSED DRIVEWAY = 38 SY

DRIVEWAY REMOVAL = 42 SY
 PROPOSED DRIVEWAY = 36 SY


 W11-2 - 24"x24" WITH TELESCOPING SIGN SUPPORT. LOCATE APPROXIMATELY 250' IN ADVANCE OF CROSSWALK ON FANDEL ROAD APPROACHES.



STATION	OFFSET	ELEVATION	STATION	OFFSET	ELEVATION	STATION	OFFSET	ELEVATION			
1	25+91.28	16.08' RT	771.21	15	27+71.72	16.08' RT	769.42	29	29+83.11	16.08' RT	764.95
2	25+91.28	21.08' RT	771.28	16	27+71.72	21.08' RT	769.50	30	29+83.11	21.08' RT	765.03
3	26+01.28	16.08' RT	770.56	17	28+10.96	16.08' RT	768.83	31	29+76.56	15.06' LT (EX.)	764.96 (EX.)
4	26+01.28	21.08' RT	770.48	18	28+10.96	21.08' RT	768.91	32	29+76.56	22.06' LT	764.84
5	26+21.28	16.08' RT	770.40	19	28+18.96	16.08' RT	768.33	33	29+85.73 (EX.)	22.06' LT	764.76 (EX.)
6	26+21.28	21.08' RT	770.33	20	28+18.96	21.08' RT	768.41	34	30+23.98	16.73' LT (EX.)	764.09 (EX.)
7	26+31.28	16.08' RT	770.88	21	28+38.96	16.08' RT	768.01	35	30+19.02	21.73' LT (EX.)	764.06 (EX.)
8	26+31.28	21.08' RT	770.96	22	28+38.96	21.08' RT	768.09	36	30+27.98	16.74' LT	764.02
9	27+35.72	16.08' RT	769.89	23	28+46.96	16.08' RT	768.23	37	30+27.97	21.74' LT	763.98
10	27+35.72	21.08' RT	769.97	24	28+46.96	21.08' RT	768.31	38	29+78.11	14.08' RT	765.02
11	27+43.72	16.08' RT	769.44	25	29+70.11	16.08' RT	765.42	39	29+83.11	14.08' RT	764.92
12	27+43.72	21.08' RT	769.52	26	29+70.11	21.08' RT	765.50				
13	27+63.72	16.08' RT	769.16	27	29+78.11	16.08' RT	765.05				
14	27+63.72	21.08' RT	769.24	28	29+78.11	21.08' RT	765.13				



MODEL NAME = Sheet2
 FILE NAME = Fandel_Prop.dgn
 PLOT SCALE = 20.0000' / 1" = 20'
 PLOT DATE = 10/13/2015 2:45:42 PM

DESIGNED - RMM
 DRAWN - AWH
 CHECKED - E.JH
 DATE - OCTOBER 2015

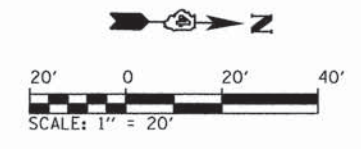
REVISED -
 REVISED -
 REVISED -
 REVISED -

VILLAGE OF GERMANTOWN HILLS
 WOODFORD COUNTY, ILLINOIS

FANDEL ROAD SIDEWALK
 PLAN AND PROFILE

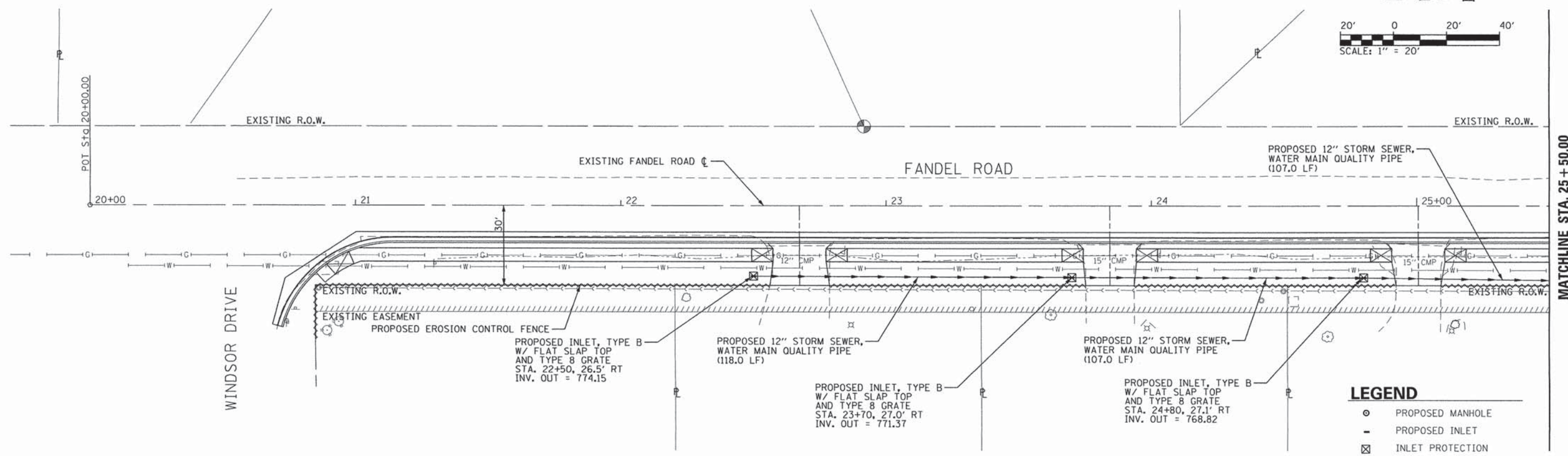
SCALE: 1" = 20' SHEET 2 OF 2 SHEETS STA. TO STA.

F.A.U. RTE.	SECTION	COUNTY	TOTAL SHEETS	SHEET NO.
	14-00008-01-SW	WOODFORD	16	7
CONTRACT NO. 89688			ILLINOIS FED. AID PROJECT	

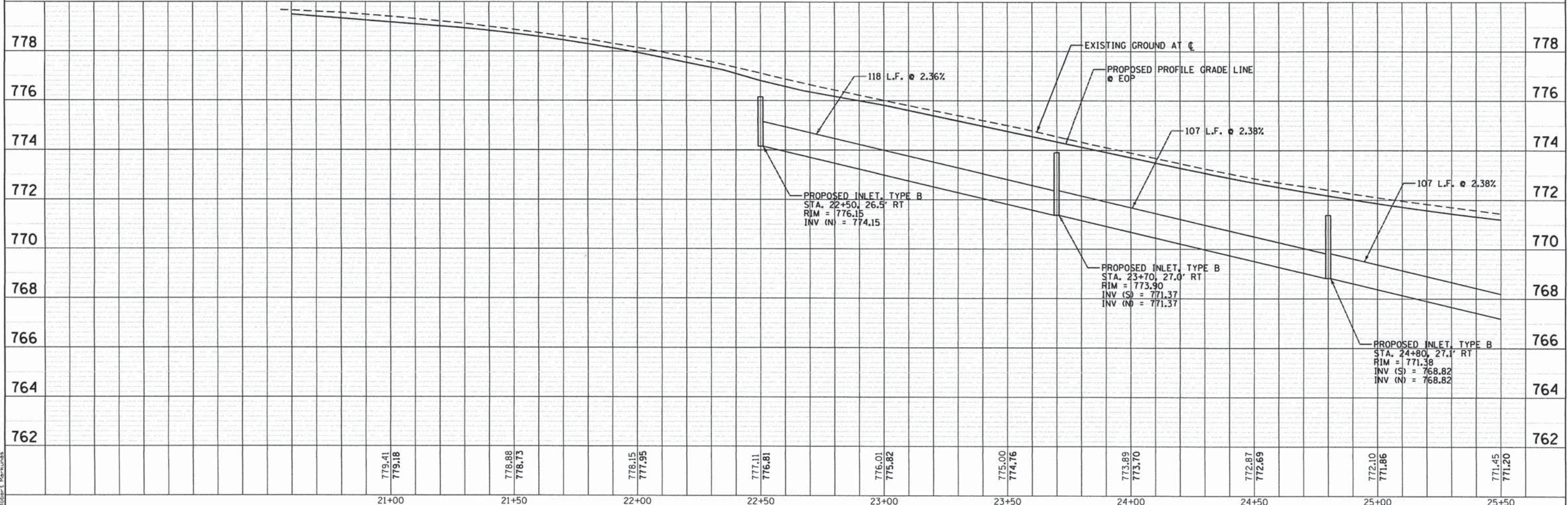


DATE	
BY	
PLAN	
NO.	
NOTE BOOK	
NO.	
REVISIONS	
DATE	
BY	
DESCRIPTION	

DATE	
BY	
PROFILE	
NO.	
NOTE BOOK	
NO.	
REVISIONS	
DATE	
BY	
DESCRIPTION	



- LEGEND**
- PROPOSED MANHOLE
 - PROPOSED INLET
 - ⊗ INLET PROTECTION
 - ~ EROSION CONTROL FENCE



DIRECTORY: I:\GIS\Projects\14-00008-01-SW\14-00008-01-SW_Sheet1.dwg
 USER NAME: R. Miller
 License No. 184-000613

MODEL NAME = Sheet	DESIGNED - RMM	REVISED -
FILE NAME = Fandel_DrainagePrp.dgn	DRAWN - AWH	REVISED -
PLOT SCALE = 20.0000' / 1" =	CHECKED - EJH	REVISED -
PLOT DATE = 10/12/2015 4:51:54 PM	DATE - OCTOBER 2015	REVISED -

**VILLAGE OF GERMANTOWN HILLS
WOODFORD COUNTY, ILLINOIS**

**FANDEL ROAD SIDEWALK
DRAINAGE PLAN AND PROFILE**

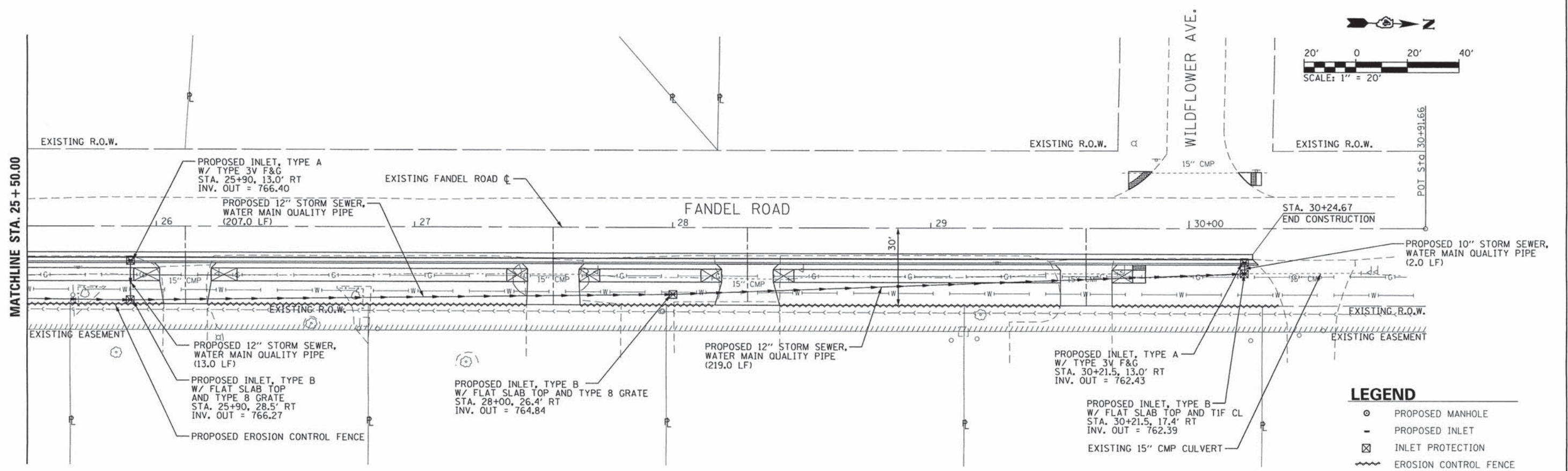
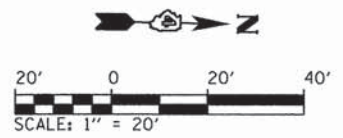
SCALE: 1" = 20' SHEET 1 OF 2 SHEETS STA. TO STA.

F.A.U. RTE.	SECTION	COUNTY	TOTAL SHEETS	SHEET NO.
	14-00008-01-SW	WOODFORD	16	8
CONTRACT NO. 89688			ILLINOIS FED. AID PROJECT	

DATE	
BY	
SURVEYED	
ALIGNED	
CHECKED	
NO. OF W.A. CHECKED	
NO. OF S.D. FILE NAME	
PLAN	
NOTE BOOK	
NO.	

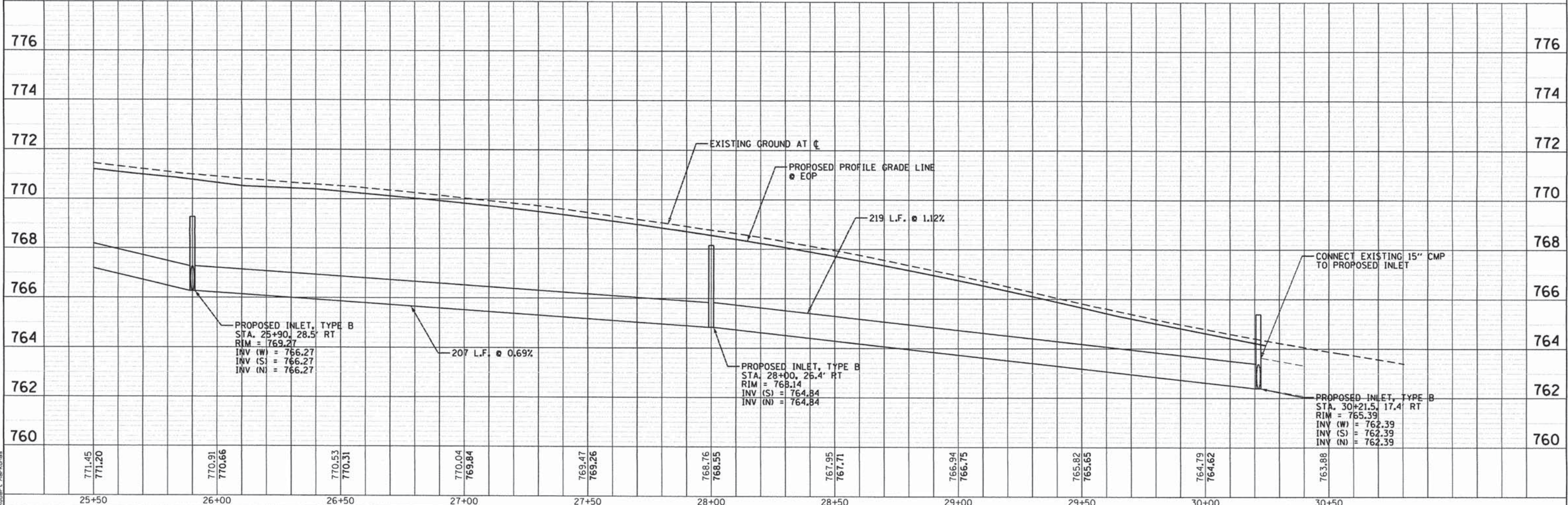
DATE	
BY	
SURVEYED	
GRADES CHECKED	
NO. NOTED	
STRUCTURE	
NOTATION	
PROFILE	
NOTE BOOK	
NO.	

DIRECTORY
 USER NAME
 * L:\Germantown\181921-00\DWG\CADD_Sheet1.dwg
 * Robb, T. Mar-2015



LEGEND

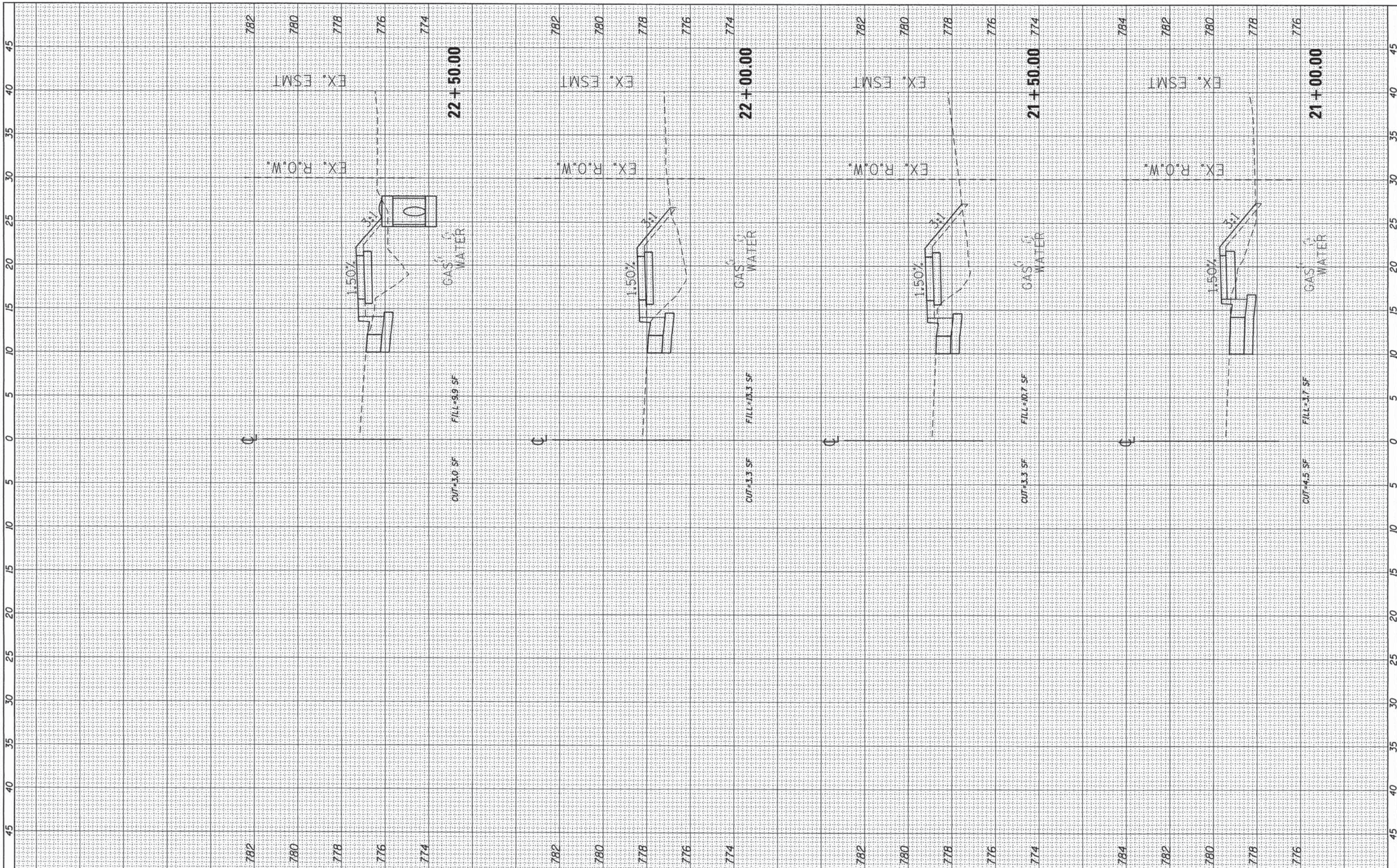
- PROPOSED MANHOLE
- PROPOSED INLET
- ⊠ INLET PROTECTION
- ~ EROSION CONTROL FENCE



776	774	772	770	768	766	764	762	760																																					
771.45	771.20	770.91	770.66	770.53	770.31	770.04	769.84	769.47	769.26	768.76	768.55	767.95	767.71	766.94	766.75	765.82	765.65	764.79	764.62	763.88																									
25+50	26+00	26+50	27+00	27+50	28+00	28+50	29+00	29+50	30+00	30+50																																			
<table border="1"> <tr><td>MODEL NAME</td><td>= Sheet2</td><td>DESIGNED</td><td>- RMM</td><td>REVISED</td><td>-</td></tr> <tr><td>FILE NAME</td><td>= Fandel_Drainage.dwg</td><td>DRAWN</td><td>- AWH</td><td>REVISED</td><td>-</td></tr> <tr><td>PLOT SCALE</td><td>= 20,0000' / 1" = 20'</td><td>CHECKED</td><td>- EJH</td><td>REVISED</td><td>-</td></tr> <tr><td>PLOT DATE</td><td>= 10/13/2015 1:39:01 PM</td><td>DATE</td><td>= OCTOBER 2015</td><td>REVISED</td><td>-</td></tr> </table>										MODEL NAME	= Sheet2	DESIGNED	- RMM	REVISED	-	FILE NAME	= Fandel_Drainage.dwg	DRAWN	- AWH	REVISED	-	PLOT SCALE	= 20,0000' / 1" = 20'	CHECKED	- EJH	REVISED	-	PLOT DATE	= 10/13/2015 1:39:01 PM	DATE	= OCTOBER 2015	REVISED	-	VILLAGE OF GERMANTOWN HILLS WOODFORD COUNTY, ILLINOIS					FANDEL ROAD SIDEWALK DRAINAGE PLAN AND PROFILE					F.A.U. RTE. SECTION COUNTY TOTAL SHEETS SHEET NO. 14-00008-01-SW WOODFORD 16 9	
MODEL NAME	= Sheet2	DESIGNED	- RMM	REVISED	-																																								
FILE NAME	= Fandel_Drainage.dwg	DRAWN	- AWH	REVISED	-																																								
PLOT SCALE	= 20,0000' / 1" = 20'	CHECKED	- EJH	REVISED	-																																								
PLOT DATE	= 10/13/2015 1:39:01 PM	DATE	= OCTOBER 2015	REVISED	-																																								
SCALE: 1" = 20' SHEET 2 OF 2 SHEETS STA. TO STA.										CONTRACT NO. 89688 ILLINOIS FED. AID PROJECT																																			

FINAL SURVEY	SURVEYED	BY	DATE
NOTE BOOK NO.	PLOTTED		
	TEMPLATE		
	AREAS		
	CHECKED		

ORIGINAL SURVEY	SURVEYED	BY	DATE
NOTE BOOK NO.	PLOTTED		
	TEMPLATE		
	AREAS		
	CHECKED		



FILE NAME =
L:\GermantownHills\15021-03-00\Draw\CA00_Sheets\X-Sections.dgn

USER NAME = Robert Markunas
DRAWN - RMM
CHECKED - E.JH
DATE - OCTOBER 2015

DESIGNED - RMM
REVISOR -
REVISOR -
REVISOR -

REVISOR -
REVISOR -
REVISOR -

**VILLAGE OF GERMANTOWN HILLS
WOODFORD COUNTY, ILLINOIS**

**FANDEL ROAD SIDEWALK
CROSS SECTIONS**

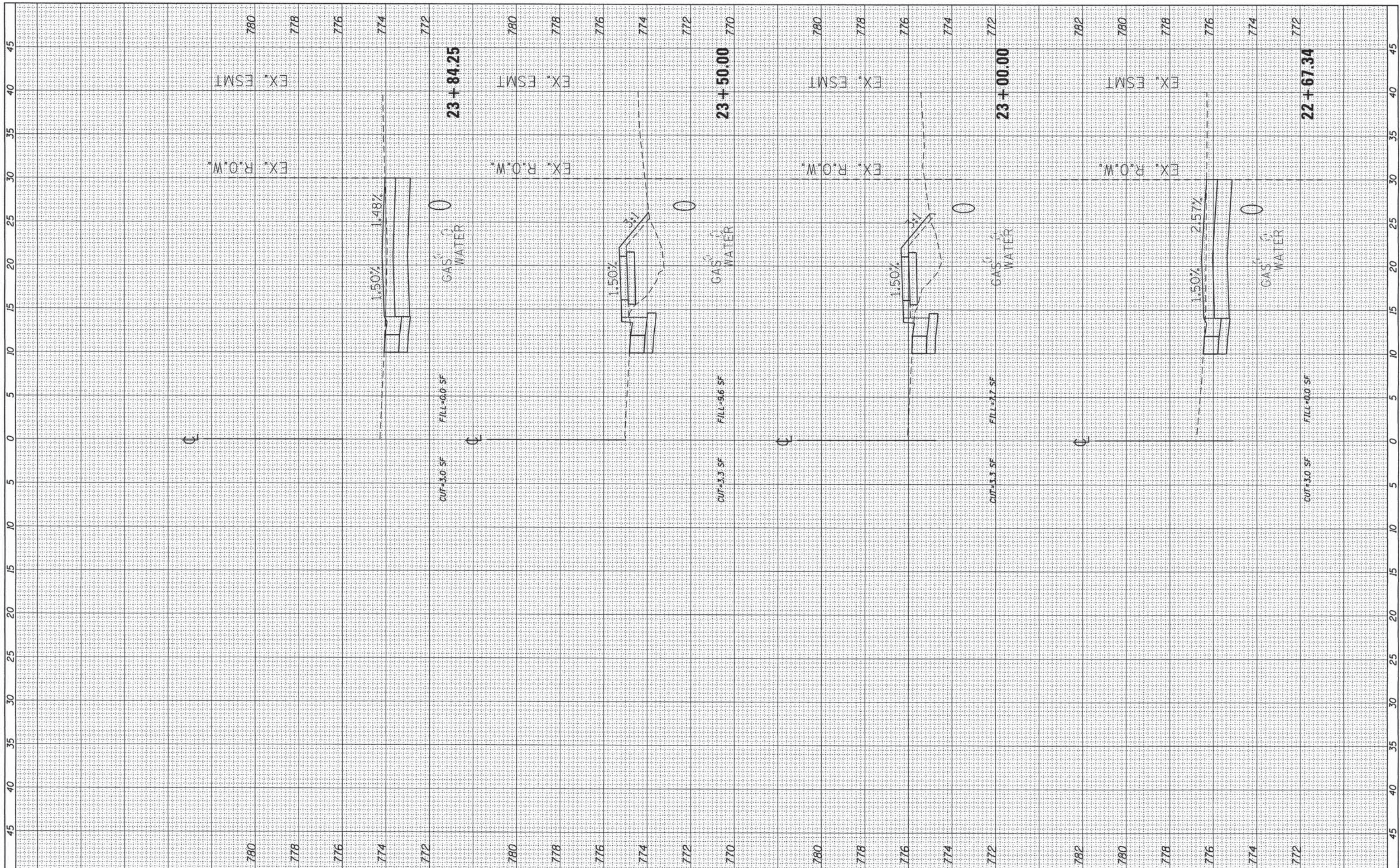
SCALE: SHEET 1 OF 7 SHEETS STA. 21+00.00 TO STA. 22+50.00

F.A. RTE.	SECTION	COUNTY	TOTAL SHEETS	SHEET NO.
	14-00008-01-SW	WOODFORD	16	10
			CONTRACT NO. 89688	

ILLINOIS FED. AID PROJECT

FINAL SURVEY	BY	DATE
SURVEYED		
NOTE BOOK		
NO.		
AREAS CHECKED		

ORIGINAL SURVEY	BY	DATE
SURVEYED		
NOTE BOOK		
NO.		
AREAS CHECKED		



FILE NAME = L:\GermantownHills\15021-03-00\Draw\CADD_Sheets\X-Sections.dgn
 Default

USER NAME = Robert Markunas
 DESIGNED - RMM
 DRAWN - RMM
 CHECKED - EJH
 DATE - OCTOBER 2015

REVISED -
 REVISED -
 REVISED -
 REVISED -

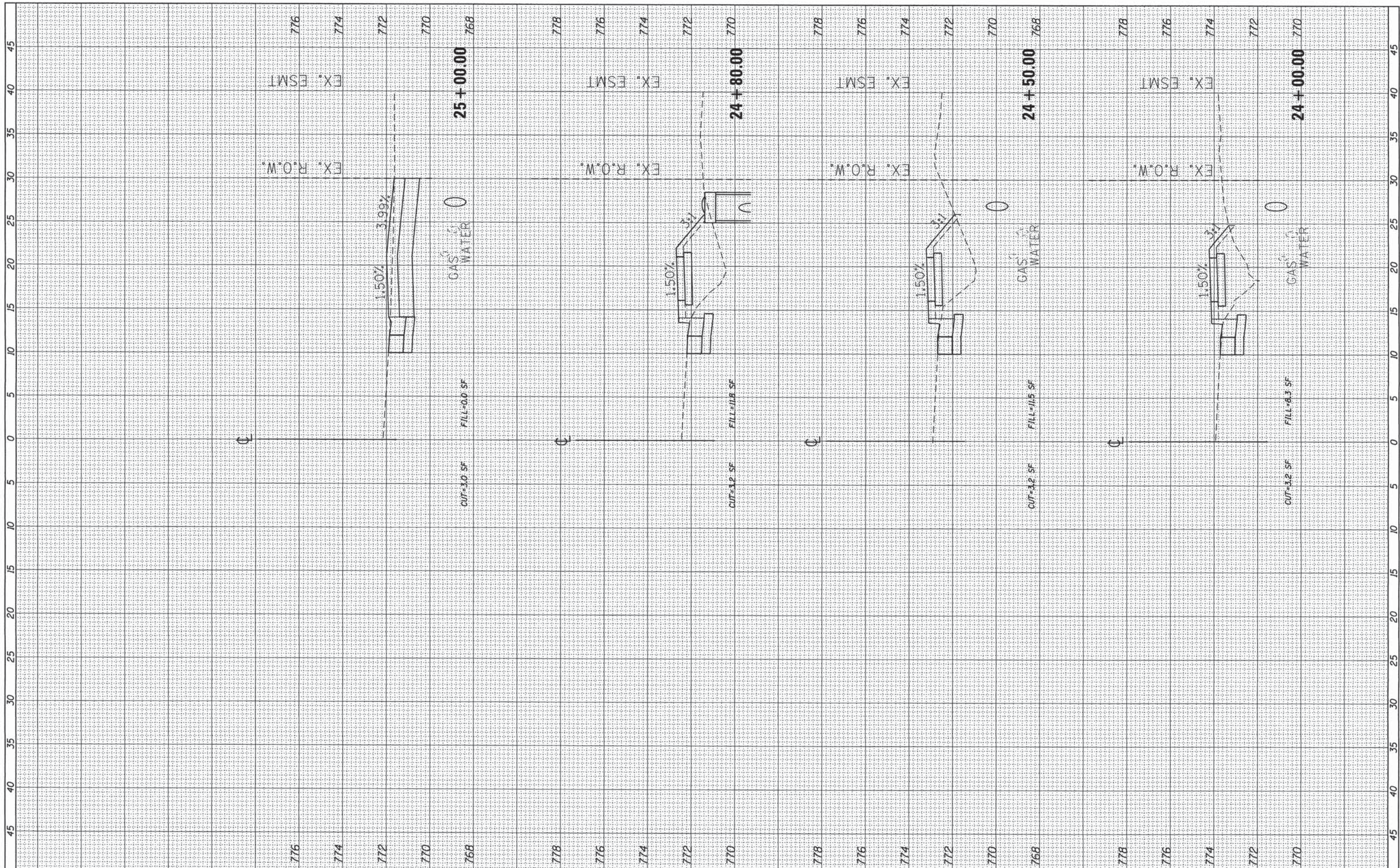
**VILLAGE OF GERMANTOWN HILLS
 WOODFORD COUNTY, ILLINOIS**

**FANDEL ROAD SIDEWALK
 CROSS SECTIONS**
 SCALE: SHEET 2 OF 7 SHEETS STA. 22+67.34 TO STA. 23+84.25

F.A. RTE.	SECTION	COUNTY	TOTAL SHEETS	SHEET NO.
	14-00008-01-SW	WOODFORD	16	11
			CONTRACT NO. 89688	
ILLINOIS FED. AID PROJECT				

FINAL SURVEY	BY	DATE
SURVEYED		
NOTE BOOK		
NO.		
TEMPLATE		
AREAS		
CHECKED		

ORIGINAL SURVEY	BY	DATE
SURVEYED		
NOTE BOOK		
NO.		
TEMPLATE		
AREAS		
CHECKED		



FILE NAME = L:\GermantownHills\15021-03-00\Draw\CADD_Sheets\X-Sections.dgn

USER NAME = Robert Markunas
 DESIGNED - RMM
 DRAWN - RMM
 CHECKED - EJH
 DATE - OCTOBER 2015

REVISIONS:
 REVISED -
 REVISED -
 REVISED -
 REVISED -

**VILLAGE OF GERMANTOWN HILLS
 WOODFORD COUNTY, ILLINOIS**

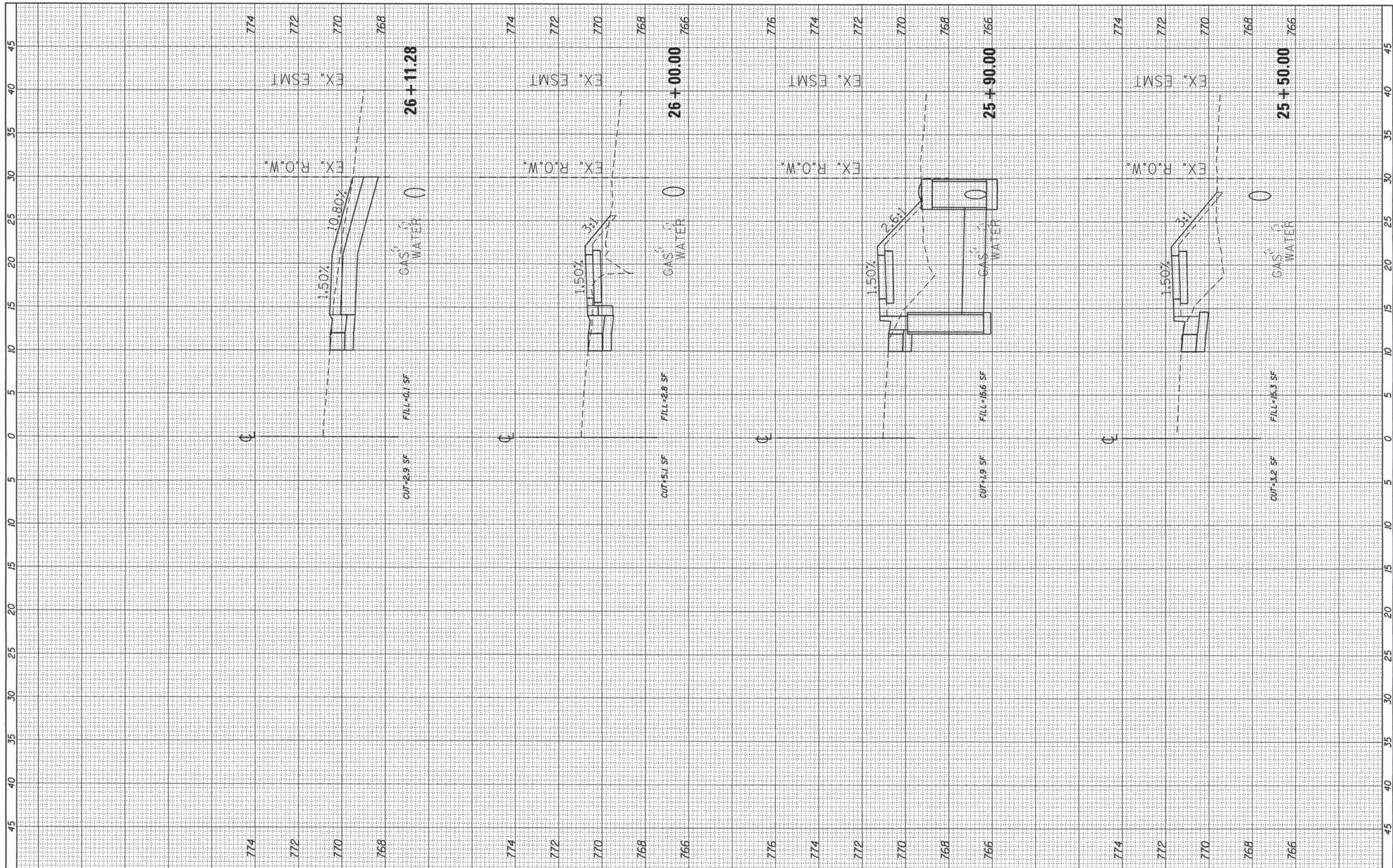
**FANDEL ROAD SIDEWALK
 CROSS SECTIONS**

SCALE: SHEET 3 OF 7 SHEETS STA. 24+00.00 TO STA. 25+00.59

F.A. RTE.	SECTION	COUNTY	TOTAL SHEETS	SHEET NO.
	14-00008-01-SW	WOODFORD	16	12
CONTRACT NO. 89688			ILLINOIS FED. AID PROJECT	

FINAL SURVEY	BY	DATE
SURVEYED		
PLOTTED		
NOTE BOOK		
AREAS		
AREAS CHECKED		
NO.		

ORIGINAL SURVEY	BY	DATE
SURVEYED		
PLOTTED		
NOTE BOOK		
AREAS		
AREAS CHECKED		
NO.		



FILE NAME = L:\GermantownHills\15021-03-00\Draw\CADD_Sheets\X-Sections.dgn

USER NAME = Robert Markunas
 DESIGNED - RMM
 DRAWN - RMM
 CHECKED - E.JH
 DATE - OCTOBER 2015
 PLOT SCALE = 5.0000' / in.
 PLOT DATE = 10/12/2015 4:54:45 PM

REVISIED -
 REVISIED -
 REVISIED -
 REVISIED -

**VILLAGE OF GERMANTOWN HILLS
 WOODFORD COUNTY, ILLINOIS**

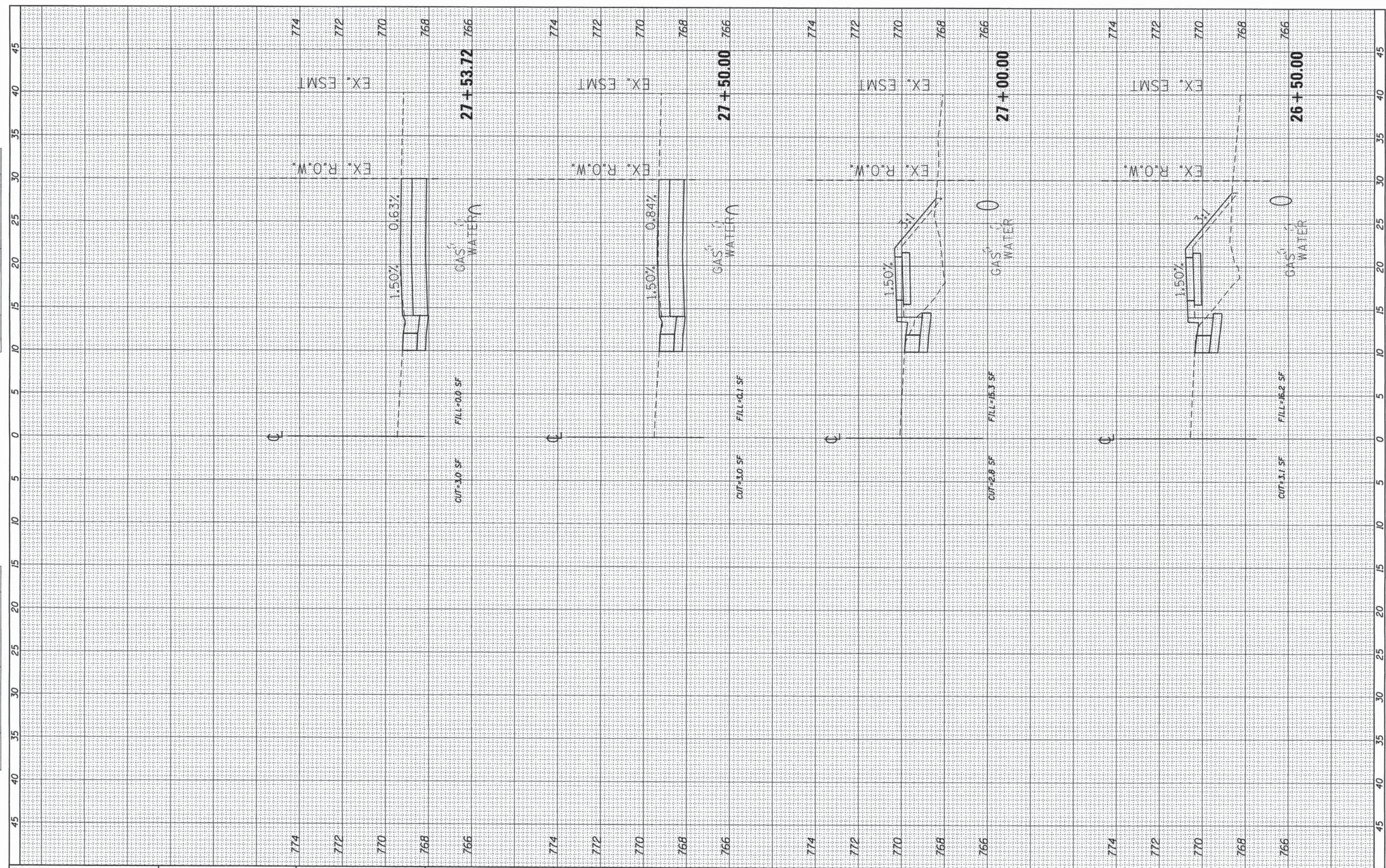
**FANDEL ROAD SIDEWALK
 CROSS SECTIONS**

SCALE: SHEET 4 OF 7 SHEETS STA. 25+50.00 TO STA. 26+11.28

F.A. RTE.	SECTION	COUNTY	TOTAL SHEETS	SHEET NO.
	14-00008-01-SW	WOODFORD	16	13
			CONTRACT NO. 89688	
ILLINOIS FED. AID PROJECT				

FINAL SURVEY	BY	DATE
SURVEYED		
NOTE BOOK		
NO.		
AREAS CHECKED		

ORIGINAL SURVEY	BY	DATE
SURVEYED		
NOTE BOOK		
NO.		
AREAS CHECKED		



FILE NAME :
 L:\GermantownHills\15021-03-00\Draw\CADD_Sheets\X-Sections.dgn
 Default

USER NAME = Robert Merkunas
 DESIGNED - RMM
 DRAWN - RMM
 CHECKED - EJH
 DATE - OCTOBER 2015
 PLOT SCALE = 5.0000' / in.
 PLOT DATE 10/12/2015 4:55:08 PM

REVISED -
 REVISED -
 REVISED -
 REVISED -

**VILLAGE OF GERMANTOWN HILLS
 WOODFORD COUNTY, ILLINOIS**

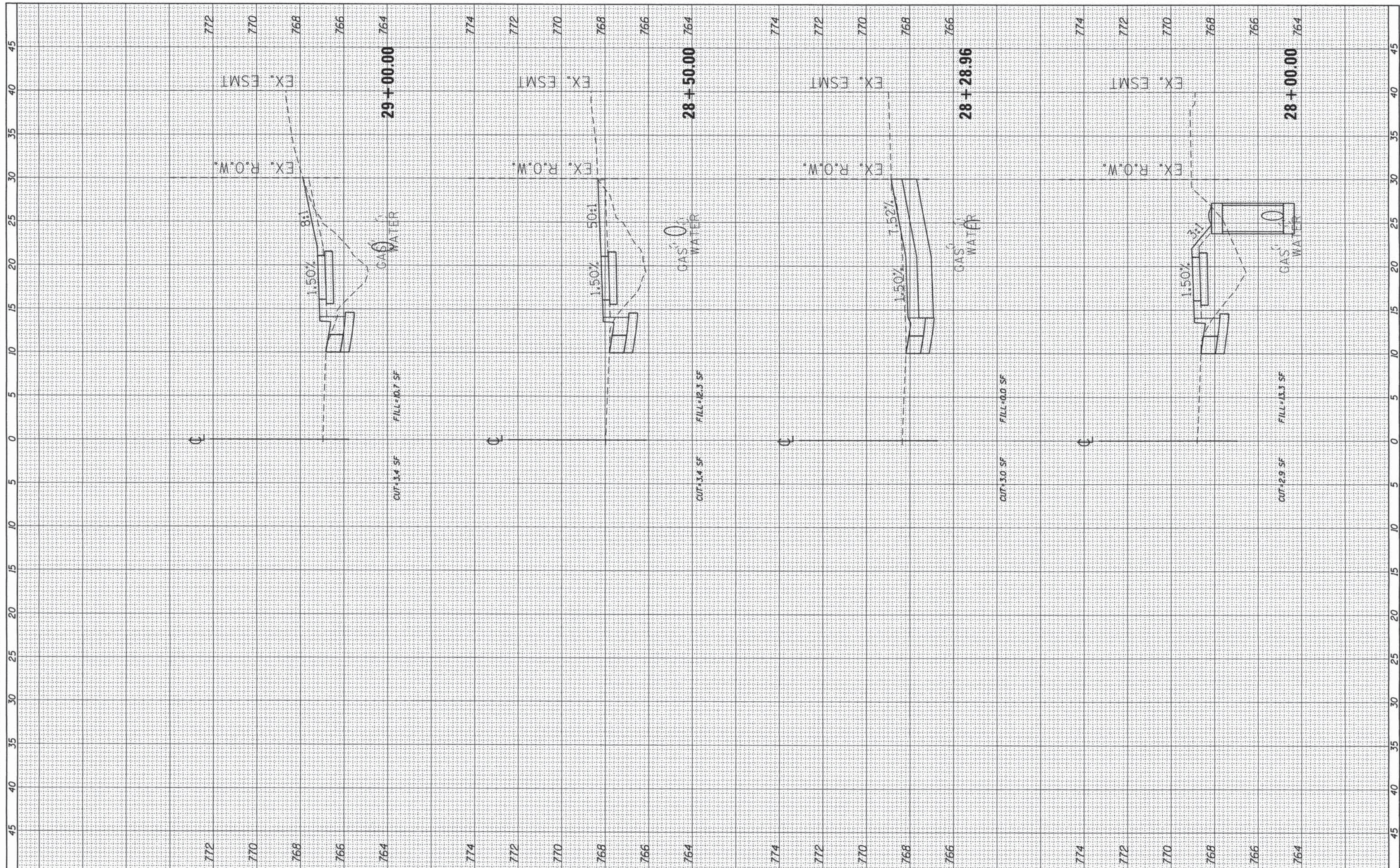
**FANDEL ROAD SIDEWALK
 CROSS SECTIONS**

SCALE: SHEET 5 OF 7 SHEETS STA. 26+50.00 TO STA. 27+53.72

F.A. RTE.	SECTION	COUNTY	TOTAL SHEETS	SHEET NO.
	14-00008-01-SW	WOODFORD	16	14
CONTRACT NO. 89688			ILLINOIS FED. AID PROJECT	

FINAL SURVEY	BY	DATE
SURVEYED		
PLOTTED		
DATE		
AREAS		
CHECKED		
NO.		

ORIGINAL SURVEY	BY	DATE
SURVEYED		
PLOTTED		
DATE		
AREAS		
CHECKED		
NO.		



FILE NAME = L:\GermantownHills\15021-03-00\Draw\CADD_Sheets\X-Sections.dgn
 USER NAME = Robert Markunas
 PLOT SCALE = 5.0000' / 1" = 1:125
 PLOT DATE = 10/12/2015 4:55:29 PM

DESIGNED - RMM	REVISED -
DRAWN - RMM	REVISED -
CHECKED - E.JH	REVISED -
DATE - OCTOBER 2015	REVISED -

DESIGNED - RMM	REVISED -
DRAWN - RMM	REVISED -
CHECKED - E.JH	REVISED -
DATE - OCTOBER 2015	REVISED -

**VILLAGE OF GERMANTOWN HILLS
WOODFORD COUNTY, ILLINOIS**

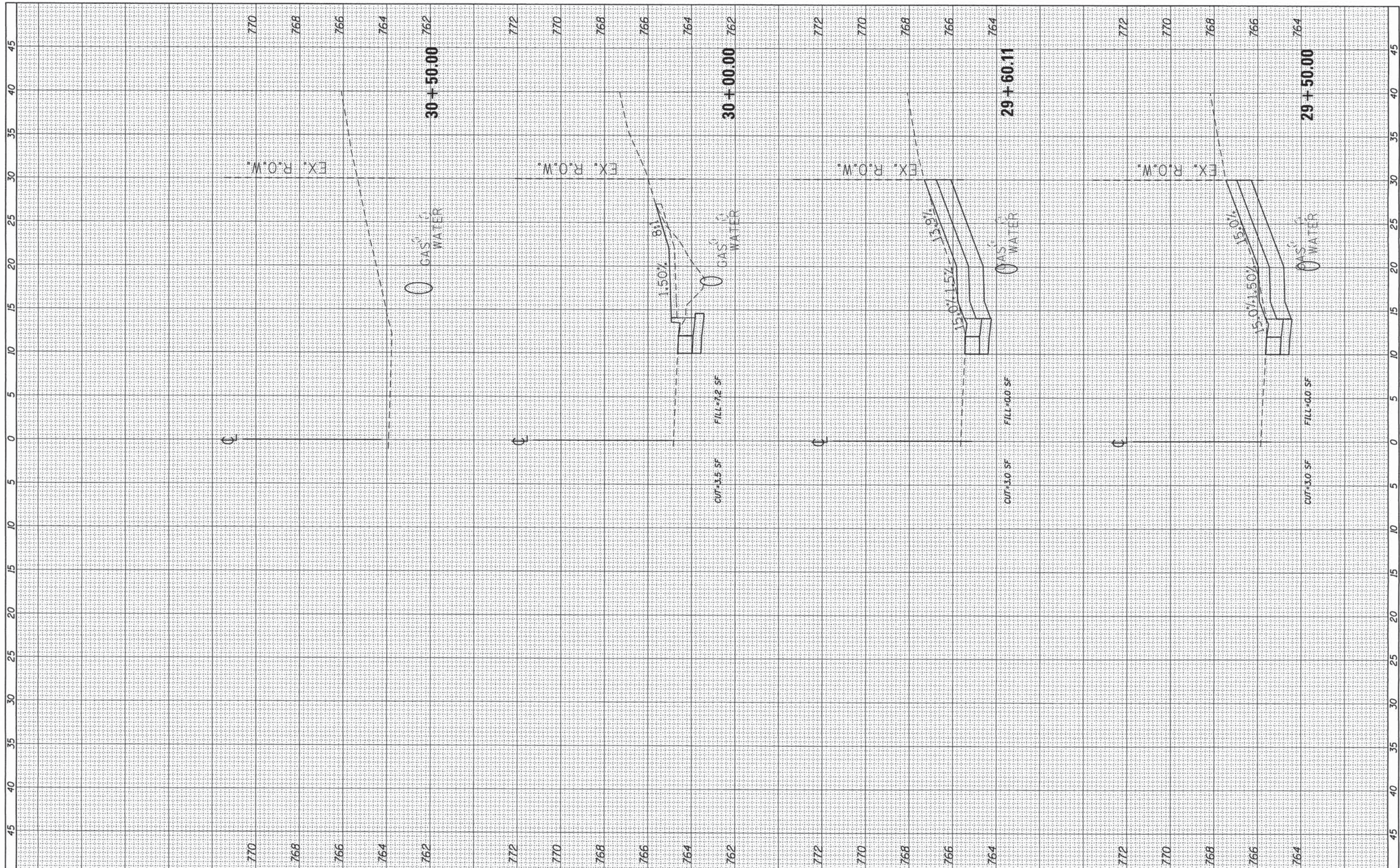
**FANDEL ROAD SIDEWALK
CROSS SECTIONS**

SCALE: SHEET 6 OF 7 SHEETS STA. 28+00.00 TO STA. 29+00.00

F.A. RTE.	SECTION	COUNTY	TOTAL SHEETS	SHEET NO.
	14-00008-01-SW	WOODFORD	16	15
			CONTRACT NO. 89688	
ILLINOIS FED. AID PROJECT				

FINAL SURVEY	BY	DATE
SURVEYED		
REVISIONS		
NOTE BOOK		
NO.		
AREAS CHECKED		

ORIGINAL SURVEY	BY	DATE
SURVEYED		
REVISIONS		
NOTE BOOK		
NO.		
AREAS CHECKED		



FILE NAME =
 L:\GermantownHills\15021-03-00\Draw\CADD_Sheets\X-Sections.dgn
 Default

USER NAME = Robert Markunas
 DESIGNED - RMM
 DRAWN - RMM
 CHECKED - EJH
 DATE - OCTOBER 2015
 PLOT SCALE = 5.0000' / in.
 PLOT DATE 10/12/2015 4:55:48 PM

REVISED -
 REVISED -
 REVISED -
 REVISED -

**VILLAGE OF GERMANTOWN HILLS
 WOODFORD COUNTY, ILLINOIS**

**FANDEL ROAD SIDEWALK
 CROSS SECTIONS**

SCALE: SHEET 7 OF 7 SHEETS STA. 29+50.00 TO STA. 30+50.00

F.A. RTE.	SECTION	COUNTY	TOTAL SHEETS	SHEET NO.
	14-00008-01-SW	WOODFORD	16	16
			CONTRACT NO. 89688	
ILLINOIS FED. AID PROJECT				