

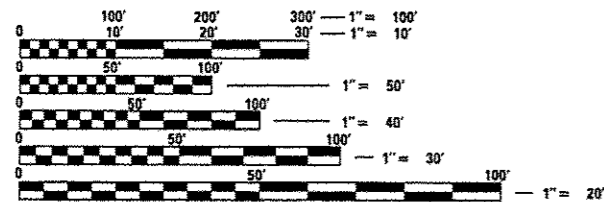
**STATE OF ILLINOIS**  
**DEPARTMENT OF TRANSPORTATION**  
**DIVISION OF HIGHWAYS**  
**PROPOSED**  
**HIGHWAY PLANS**

F.A.S. RTE.	SECTION	COUNTY	TOTAL SHEETS	SHEET NO.
775	(M-LN)RS-5	MADISON	6	1
		ILLINOIS	CONTRACT NO. 76J05	

**INDEX OF SHEETS**

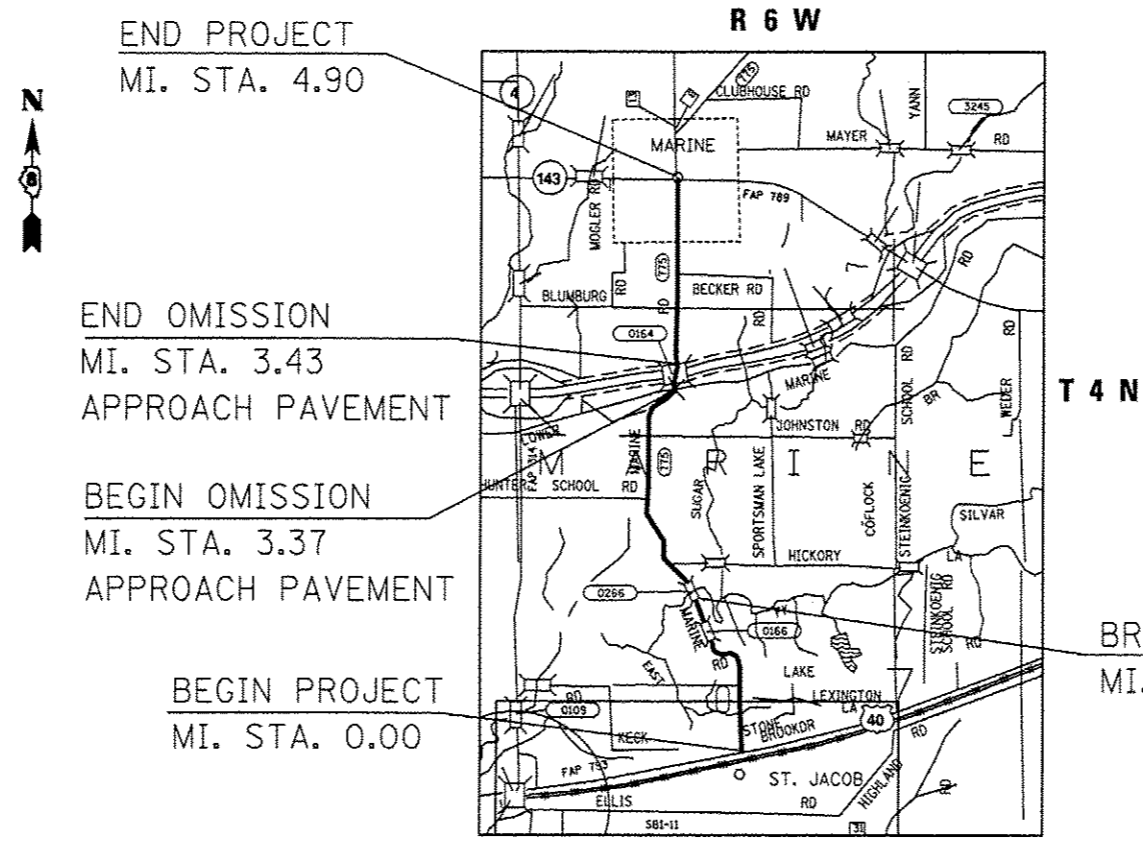
1. COVER SHEET
2. GENERAL NOTES, COMMITMENTS, AND HIGHWAY STANDARDS
3. SUMMARY OF QUANTITIES
4. TYPICAL SECTIONS
5. SCHEDULES
6. SURVEY MONUMENT COVER ASSEMBLY

**FAS ROUTE 775 (MARINE RD)**  
**SECTION (M-LN)RS-5**  
**OIL AND CHIP**  
**MADISON COUNTY**  
**C-98-055-15**



FULL SIZE PLANS HAVE BEEN PREPARED USING STANDARD ENGINEERING SCALES. REDUCED SIZED PLANS WILL NOT CONFORM TO STANDARD SCALES. IN MAKING MEASUREMENTS ON REDUCED PLANS, THE ABOVE SCALES MAY BE USED.

J.U.L.I.E.  
 JOINT UTILITY LOCATION INFORMATION FOR EXCAVATION  
 1-800-892-0123  
 OR 811



**PROJECT LEADER: BILLIE OWEN (618) 346-3209**  
**SQUAD CONTACT: KEVIN LEWIS (618) 346-3145**

**CONTRACT NO. 76J05**

GROSS LENGTH = 25,872 FT. = 4.90 MILE  
 NET LENGTH = 25,450 FT. = 4.82 MILE

STATE OF ILLINOIS  
 DEPARTMENT OF TRANSPORTATION  
 DIVISION OF HIGHWAYS

SUBMITTED Oct. 30 2015  
Jeffrey Z. Kamars  
 DEPUTY DIRECTOR OF HIGHWAYS, REGION 5 ENGINEER

Dec 4 2015  
John D. Baranzelli PE  
 ENGINEER OF DESIGN AND ENVIRONMENT

Dec 4 2015  
Omer Osman PE  
 DIRECTOR OF HIGHWAYS, CHIEF ENGINEER

**PRINTED BY THE AUTHORITY**  
**OF THE STATE OF ILLINOIS**

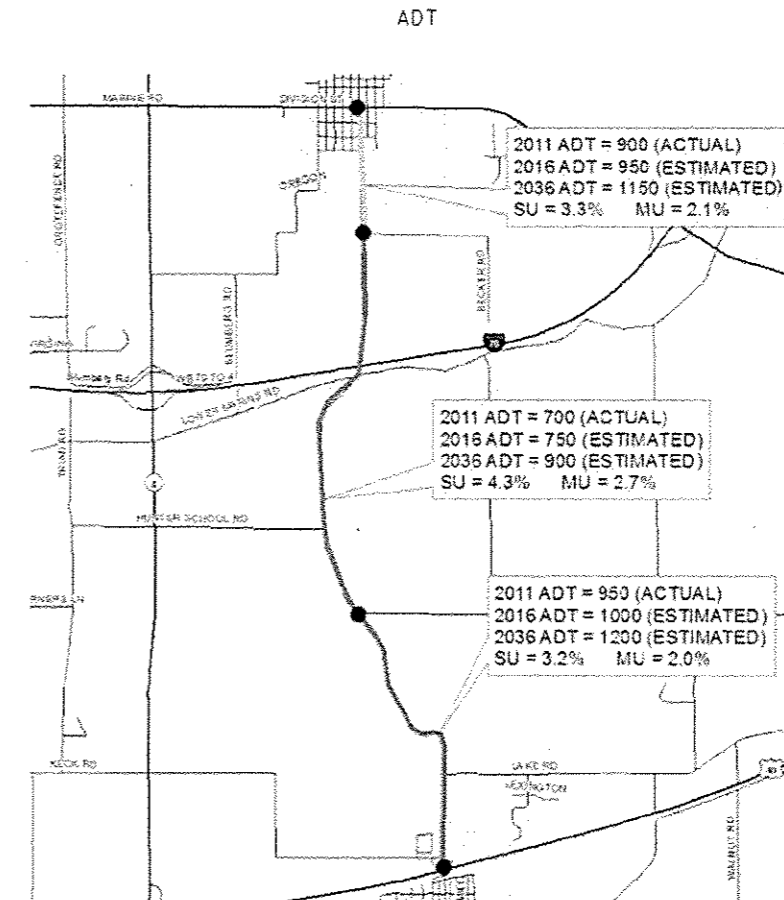
GENERAL NOTES

- ILLINOIS STATE LAW REQUIRES A 48-HOUR NOTICE TO BE GIVEN TO UTILITIES BEFORE DIGGING. FIELD MARKING OF FACILITIES MAY BE OBTAINED BY CONTACTING J.U.L.I.E. (1-800-892-0123 OR 811) OR FOR NON-MEMBERS THE UTILITY COMPANY DIRECTLY.
- THE CONTRACTOR AND THE ENGINEER SHALL BE AWARE THAT NO SURVEY WAS PERFORMED FOR THIS PROJECT. THE STATIONING, TOPOGRAPHY, AND QUANTITIES SHOWN IN THE PLANS WERE CREATED USING MICROFILM AND FIELD MEASUREMENTS. ALL SHALL BE ASSUMED TO BE APPROXIMATE. THE CONTRACTOR SHALL VERIFY DIMENSIONS AND CONDITIONS IN THE FIELD PRIOR TO CONSTRUCTION AND ORDERING OF MATERIALS.
- THE CONTRACTOR SHALL POST THE ROADWAY WITH "LOOSE GRAVEL" AND "SPEED LIMIT 35" SIGNS IN ACCORDANCE WITH APPLICABLE ARTICLES OF DIVISION 700 OF THE STANDARD SPECIFICATIONS. THESE SIGNS SHALL BE PLACED AT THE START OF WORK, NEAR INTERSECTING ROADWAYS AND THEN AT AN AVERAGE SPACING OF 0.5 MILES (0.8 KM). THE SIGNS MAY BE REMOVED AS SOON AS THE SWEEPING OPERATION HAS BEEN COMPLETED.
- SIDERoadS AND ENTRANCES SHALL BE OPEN TO TRAFFIC AT ALL TIMES.
- NO OVERNIGHT LANE CLOSURES WILL BE PERMITTED.
- 'ROAD CONSTRUCTION AHEAD' SIGNS SHALL BE PLACED AT THE BEGINNING OF THE PROJECT PLUS THE INTERSECTING SIDERoadS, AND WILL BE CONSIDERED INCLUDED IN THE TRAFFIC CONTROL PAY ITEMS. ALL CONSTRUCTION SIGNS SHALL BE 48" X 48" FLUORESCENT ORANGE.

- THE FINAL WEARING SURFACE SHALL CURE FOR A MINIMUM OF SEVEN DAYS BEFORE PLACEMENT OF THE PERMANENT PAVEMENT MARKINGS.
- THE PROPOSED PAVEMENT MARKING SHALL MATCH THE LOCATIONS OF THE EXISTING PAVEMENT MARKING, AS DIRECTED BY THE ENGINEER.
- THE DEPARTMENT STRONGLY ENCOURAGES THE PRIME CONTRACTOR AND THEIR APPROVED SUB-CONTRACTORS TO HIRE MINORITY, WOMEN AND DISADVANTAGED INDIVIDUALS FROM ITS FEDERALLY FUNDED HIGHWAY CONSTRUCTION CAREERS TRAINING PROGRAM (HCCTP) TO HELP MEET WORKFORCE AND TRAINEE GOALS. THIS PROGRAM IS TRAINING MINORITIES, WOMEN AND DISADVANTAGED INDIVIDUALS IN HIGHWAY CONSTRUCTION-RELATED SKILLS, E.G., MATH FOR THE TRADES, JOB READINESS, TECHNICAL SKILLS COURSEWORK (CARPENTRY, CONCRETE FLATWORK, BLUEPRINT READING, SITE PLANS, SITE WORK, TOOLS USE, ETC.) AND OSHA 10 HOUR CERTIFICATION, TO PREPARE THEM FOR A CAREER IN THE HIGHWAY CONSTRUCTION TRADES. GRADUATES ARE WELL-TRAINED AND READY TO BECOME PRODUCTIVE ENTRY-LEVEL CONSTRUCTION WORKERS. CONTACT THE DISTRICT 8 EEO OFFICE AT 618-346-3360 AND/OR THE HCCTP COORDINATOR AT 618-874-6528 TO LEARN MORE ABOUT THE PROGRAM AND FOR ASSISTANCE IN MEETING WORKFORCE AND TRAINEE GOALS.

COMMITMENTS  
NONE

STANDARDS  
000001-06  
701006-05  
701306-03  
701311-03  
701501-06  
701901-04  
780001-05

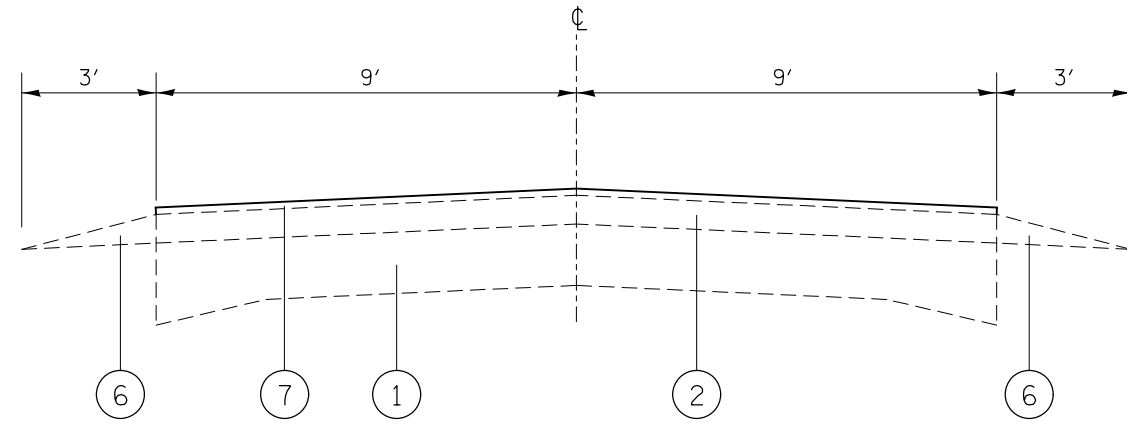


FILE NAME * p:\11\084E810INTEG\Illinois.gov\PI\DOT\Do	USER NAME * jawiako	DESIGNED -	REVISED -	<b>STATE OF ILLINOIS DEPARTMENT OF TRANSPORTATION</b>	<b>GENERAL NOTES, STANDARDS, ADT, AND COMMITMENTS</b>			F.A.S. RTE. 775	SECTION IM-LNRS-5	COUNTY MADISON	TOTAL SHEETS 6	SHEET NO. 2
PLLOT SCALE * 100.0000 ' / in.	CHECKED -	REVISED -	REVISED -					SCALE:	SHEET	OF	SHEETS	STA.
Default	PLLOT DATE * 10/30/2015	DATE -	REVISED -									

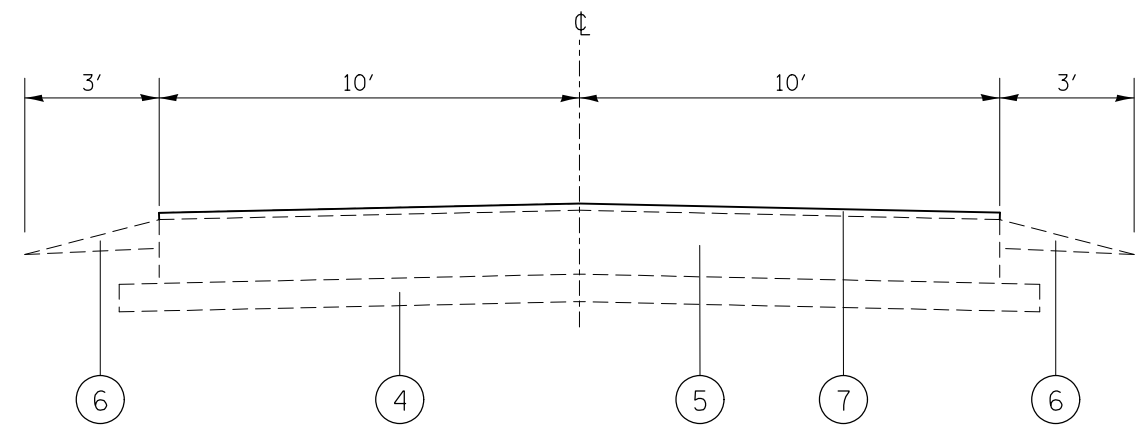
CODE NO.	ITEM	UNIT	TOTAL QUANTITY	CONSTR. CODE	
				ROADWAY	RURAL
40300400	BITUMINOUS MATERIALS (COVER AND SEAL COATS)	TON	172	172	
40300500	COVER COAT AGGREGATE	TON	588	588	
40300600	SEAL COAT AGGREGATE	TON	588	588	
67100100	MOBILIZATION	LSUM	1	1	
70100460	TRAFFIC CONTROL AND PROTECTION, STANDARD 701306	LSUM	1	1	
70102620	TRAFFIC CONTROL AND PROTECTION, STANDARD 701501	LSUM	1	1	
70300100	SHORT TERM PAVEMENT MARKING	FOOT	7018	7018	
70300220	TEMPORARY PAVEMENT MARKING - LINE 4"	FOOT	83394	83394	
70300280	TEMPORARY PAVEMENT MARKING - LINE 24"	FOOT	34	34	
70301000	WORK ZONE PAVEMENT MARKING REMOVAL	SQ FT	780	780	
* 78001110	PAINT PAVEMENT MARKING - LINE 4"	FOOT	83394	83394	
* 78001180	PAINT PAVEMENT MARKING - LINE 24"	FOOT	34	34	
X3000001	RRPM PROTECTION	EACH	322	322	
Z0070100	SURVEY MONUMENT COVER ASSEMBLY	EACH	1	1	

\* SPECIALTY ITEM

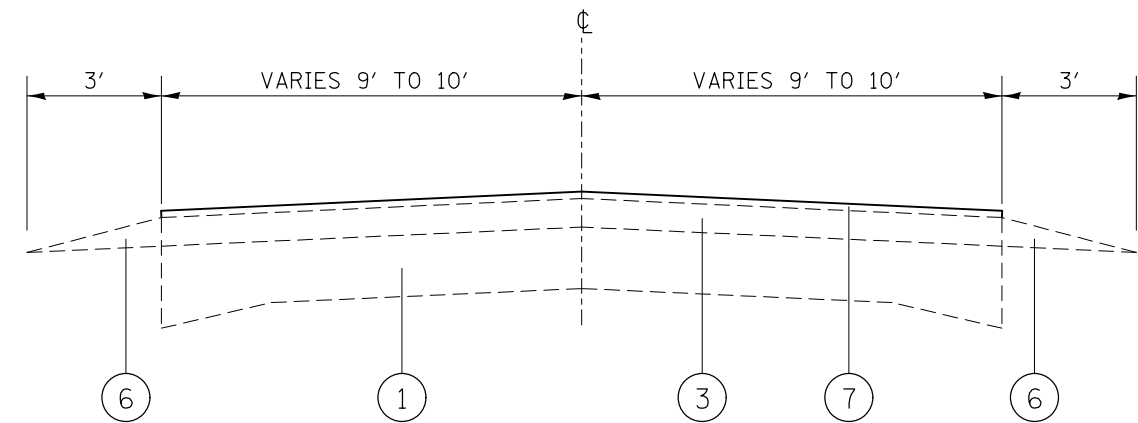
FILE NAME :	USER NAME : lewiskn	DESIGNED -	REVISED -	<b>STATE OF ILLINOIS DEPARTMENT OF TRANSPORTATION</b>	<b>SUMMARY OF QUANTITIES</b>				F.A.S. RTE.	SECTION	COUNTY	TOTAL SHEETS	SHEET NO.
pw\11884EBIDINTEG\illinois.gov\PI00T\Do	Documents\DOT Office\District B\Projects\087	087	087						775	IM-LNIRS-5	MADISON	6	3
PLOT SCALE = 100.0000' / in.	CHECKED -	REVISED -	REVISED -		SCALE: SHEET NO. OF SHEETS STA. TO STA.				FED. ROAD DIST. NO. ILLINOIS FED. AID PROJECT				
PLOT DATE = 10/30/2015	DATE -	REVISED -	REVISED -								CONTRACT NO. 76J05		



TYPICAL SECTION  
MILE STA 0.00 TO 2.90



TYPICAL SECTION  
MILE STA 2.90 TO 3.54



TYPICAL SECTION  
MILE STA 3.54 TO 4.90

**LEGEND**

- ① EXISTING PCC PAVEMENT (9"-7"-9")
- ② EXISTING BITUMINOUS OVERLAY, 5 1/4"
- ③ EXISTING BITUMINOUS OVERLAY, 4 1/2"
- ④ EXISTING SUB-BASE GRANULAR MATERIAL
- ⑤ EXISTING PCC PAVEMENT, 9"
- ⑥ EXISTING AGGREGATE SHOULDER
- ⑦ PROPOSED BITUMINOUS SURFACE TREATMENT, CLASS A-2

FILE NAME =	USER NAME = lewiska	DESIGNED -	REVISED -
pw:\11084EBIDINTEG.illinois.gov\PWIDOT\Documents\IDOT Offices\District 8\Projects\0876-DRAWING\DATA\EA0sheets\0876J05-sht-pln.dgn		CHECKED -	REVISED -
		DATE -	REVISED -

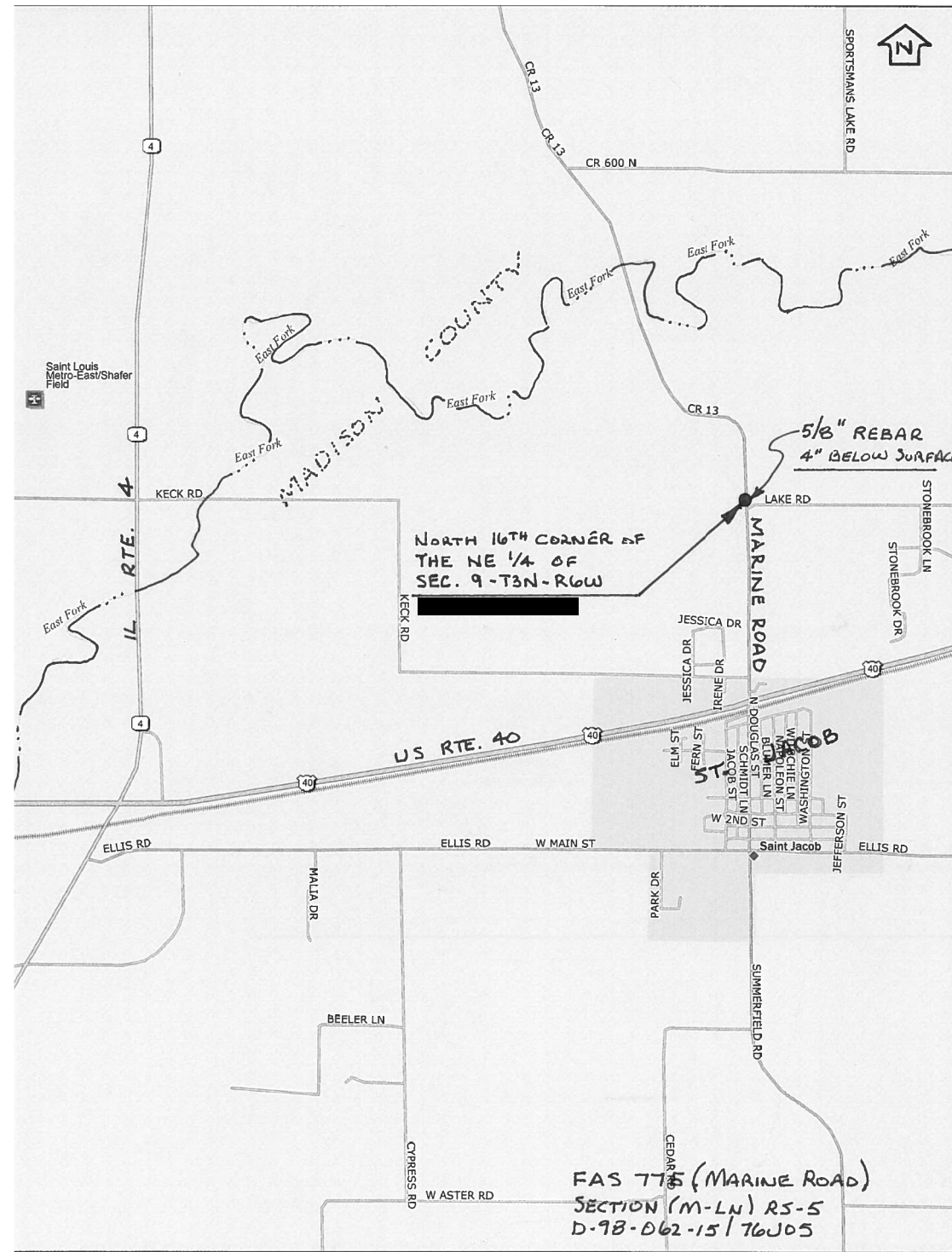
**STATE OF ILLINOIS  
DEPARTMENT OF TRANSPORTATION**

**TYPICALS**

SCALE: SHEET NO. OF SHEETS STA. TO STA.

F.A.S RTE.	SECTION	COUNTY	TOTAL SHEETS	SHEET NO.
775	(M-LNRS-5)	MADISON	6	4
FED. ROAD DIST. NO. ILLINOIS FED. AID PROJECT			CONTRACT NO. 76J05	

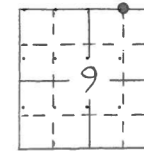




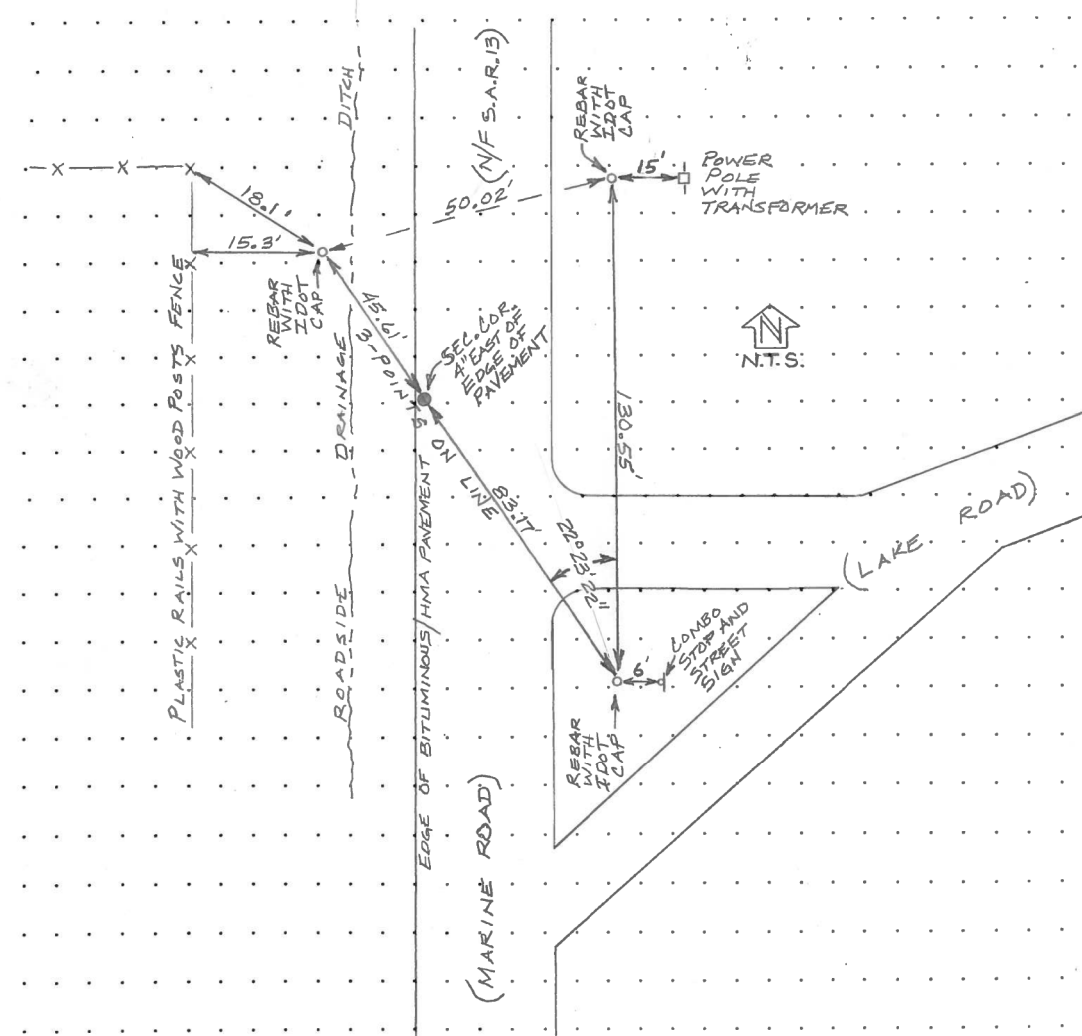
Location: MARINE ROAD @ LAKE ROAD  
APPROXIMATELY 0.6 MI. NORTH OF US 40 Job#: D-98-062-15 C#: 76J05

CP# \_\_\_\_\_ Crew: QD, TR Date: 8-12-15

NORTH 16TH CORNER OF THE  
N.E. 1/4 OF SEC. 9-T3N-R6W



5/8" REBAR  
4" BELOW  
BITUMINOUS  
SURFACE



FILE NAME =	USER NAME = lewiska	DESIGNED -	REVISED -
pw:\IL\084EBID\INTEG\illinois.gov\PIWIDOT\Documents\IDOT Offices\District 8\Projects\0876-DRAWING\DATA\EA0\Sheets\0876J05-sht-pln.dgn		DRAWN -	REVISED -
	PLOT SCALE = 100.0000' / 1" =	CHECKED -	REVISED -
	PLOT DATE = 10/30/2015	DATE -	REVISED -

STATE OF ILLINOIS  
DEPARTMENT OF TRANSPORTATION

SURVEY MONUMENT COVER ASSEMBLY

SCALE: SHEET NO. OF SHEETS STA. TO STA.

F.A.S. RTE.	SECTION	COUNTY	TOTAL SHEETS	SHEET NO.
775	(M-LN)R5-5	MADISON	6	6
CONTRACT NO. 76J05				
FED. ROAD DIST. NO. ILLINOIS FED. AID PROJECT				