

STATE OF ILLINOIS  
DEPARTMENT OF TRANSPORTATION  
DIVISION OF HIGHWAYS

**PROPOSED  
HIGHWAY PLANS**

F.A.P. ROUTE 383: OHIO ST. FEEDER  
1) OVER KINGSBURY ST. (SN 016-1053)  
2) OVER RR-UP & TRIBUNE PARKING (SN 016-1061)  
SECTION: (3030.1&.4)BR  
BRIDGE REPAIR (FORMED CONCRETE REPAIRS)  
COOK COUNTY

C-91-090-16

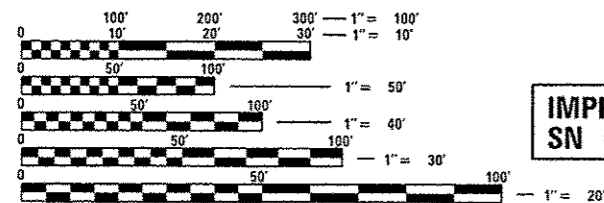
F.A.P. RTE.	SECTION	COUNTY	TOTAL SHEETS	SHEET NO.
383	(3030.1&.4)BR	COOK	23	1
		ILLINOIS	CONTRACT NO. 62B67	

FOR INDEX OF SHEETS, SEE SHEET NO. 2

IMPROVEMENT IS LOCATED IN THE CITY OF CHICAGO.

**TRAFFIC DATA**

2010 ADT = 39,600  
POSTED SPEED LIMIT = 45 MPH

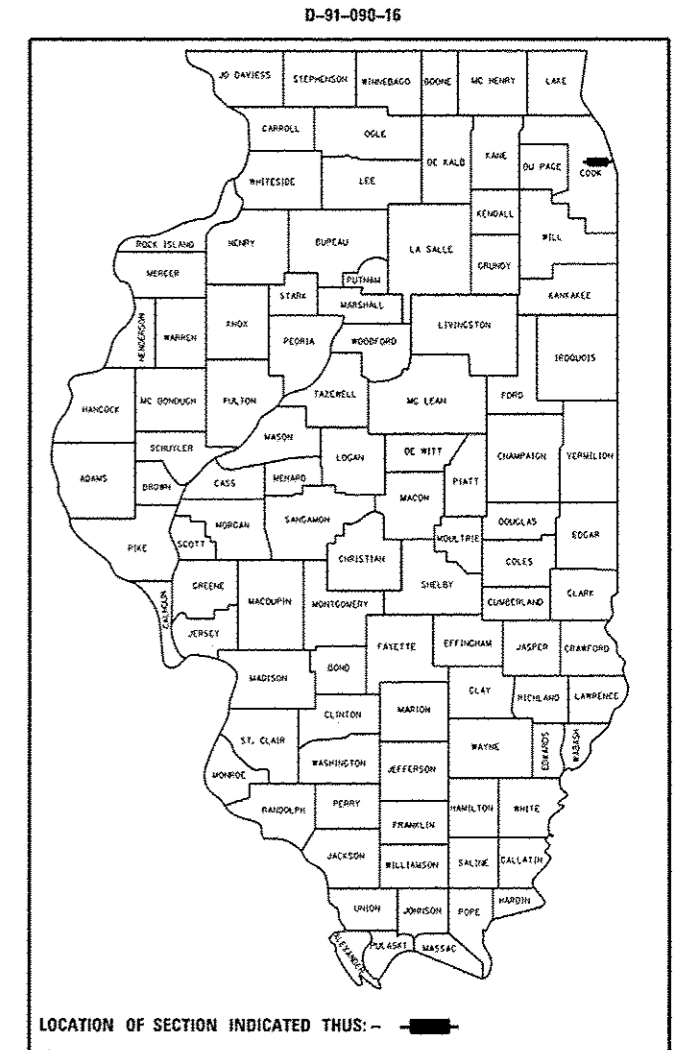
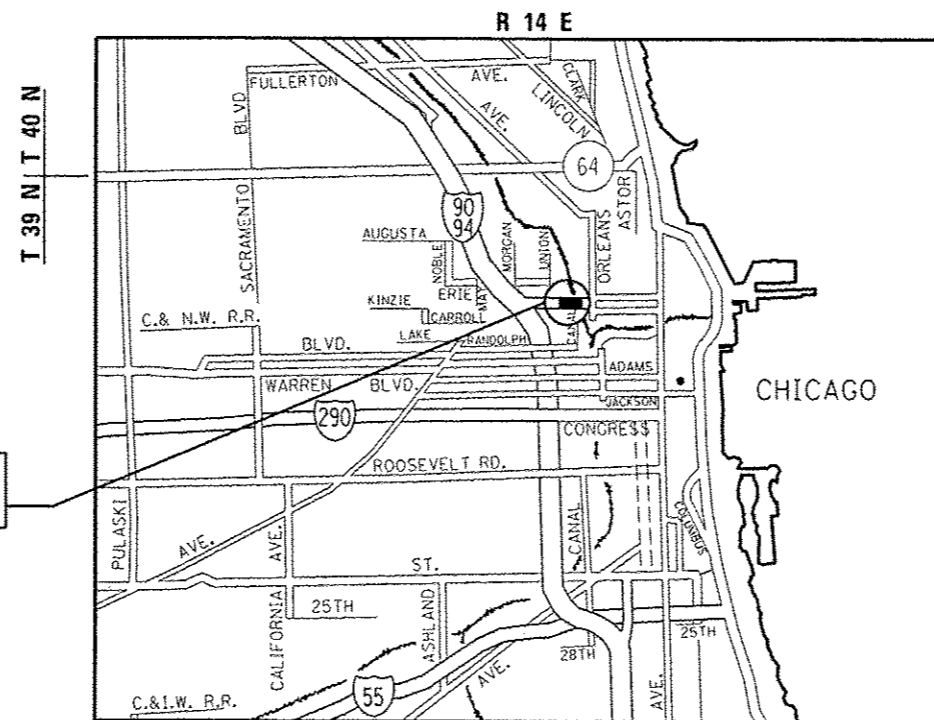


FULL SIZE PLANS HAVE BEEN PREPARED USING STANDARD ENGINEERING SCALES. REDUCED SIZED PLANS WILL NOT CONFORM TO STANDARD SCALES. IN MAKING MEASUREMENTS ON REDUCED PLANS, THE ABOVE SCALES MAY BE USED.

C.U.A.N.  
CHICAGO UTILITY ALERT NETWORK  
1-312-744-7000

PROJECT ENGINEER J. ALAIN MIDY (847) 221-3056  
PROJECT MANAGER ISSAM RAYYAN (847) 705-4178

CONTRACT NO. 62B67



LOCATION OF SECTION INDICATED THIS: - [black rectangle]

STATE OF ILLINOIS  
DEPARTMENT OF TRANSPORTATION  
DIVISION OF HIGHWAYS

SUBMITTED October 22, 2015

*John F. ...*  
DEPUTY DIRECTOR OF HIGHWAYS, REGION ENGINEER

Dec 4, 2015  
*John D. Baranzoli PE*  
ENGINEER OF DESIGN AND ENVIRONMENT

Dec 20, 2015  
*Omer Osman PE*  
DIRECTOR OF HIGHWAYS, CHIEF ENGINEER

PRINTED BY THE AUTHORITY  
OF THE STATE OF ILLINOIS

**INDEX OF SHEETS**

1.	TITLE SHEET
2.	INDEX OF SHEETS, STATE STANDARDS, AND GENERAL NOTES
3.	SUMMARY OF QUANTITIES
4-22.	BRIDGE REHABILITATION PLANS (SN 016-1053 & SN 016-1061)
23.	ARTERIAL ROAD INFORMATION SIGN (TC-22)

**STATE STANDARDS**

STANDARD NO.	DESCRIPTION
701101-04	OFF ROAD OPERATIONS, MULTILANE, 15' TO 24" FROM PAVEMENT EDGE
701501-06	URBAN LANE CLOSURE, 2L, 2W, UNDIVIDED
701801-05	SIDEWALK, CORNER OR CROSSWALK CLOSURE
701901-04	TRAFFIC CONTROL DEVICES

**GENERAL NOTES**

BEFORE STARTING ANY EXCAVATION, THE CONTRACTOR SHALL CALL "C.U.A.N." AT (312) 744-7000 FOR FIELD LOCATIONS OF BURIED ELECTRIC, TELEPHONE AND GAS FACILITIES. (48 HOUR NOTIFICATION REQUIRED).

THE CONTRACTOR SHALL COORDINATE CONSTRUCTION ACTIVITIES WITH UTILITY COMPANIES AND THE CITY OF CHICAGO.

THE CONTRACTOR WILL NOT BE ALLOWED TO SET UP A YARD OR FIELD OFFICE ON STATE PROPERTY WITHOUT WRITTEN PERMISSION FROM THE DEPARTMENT.

PLAN DIMENSIONS AND DETAILS RELATIVE TO EXISTING PLANS ARE SUBJECT TO NOMINAL CONSTRUCTION VARIATIONS. THE CONTRACTOR SHALL FIELD VERIFY EXISTING DIMENSIONS AND DETAILS AFFECTING NEW CONSTRUCTION AND MAKE NECESSARY APPROVED ADJUSTMENTS PRIOR TO CONSTRUCTION OR ORDERING MATERIALS. SUCH VARIATIONS SHALL NOT BE CAUSE FOR ADDITIONAL COMPENSATION FOR A CHANGE IN SCOPE OF WORK, HOWEVER, THE CONTRACTOR WILL BE PAID FOR THE QUANTITY ACTUALLY FURNISHED BASED AT THE UNIT PRICE BID FOR THE WORK.

THE CONTRACTOR SHALL CONTACT THE DISTRICT ONE TRAFFIC CONTROL SUPERVISOR AT (847) 705-4470 A MINIMUM OF 72 HOURS IN ADVANCE OF BEGINNING WORK.

DO NOT SCALE PLANS FOR CONSTRUCTION DIMENSIONS.

THESE PLANS HAVE BEEN PREPARED FROM NOTES RECEIVED FROM THE BUREAU OF MAINTENANCE BRIDGE INSPECTORS.

ACCESS TO THE TRIBUNE PARKING LOT SHALL BE COORDINATED THROUGH THE FOLLOWING NUMBER: 312-222-2159

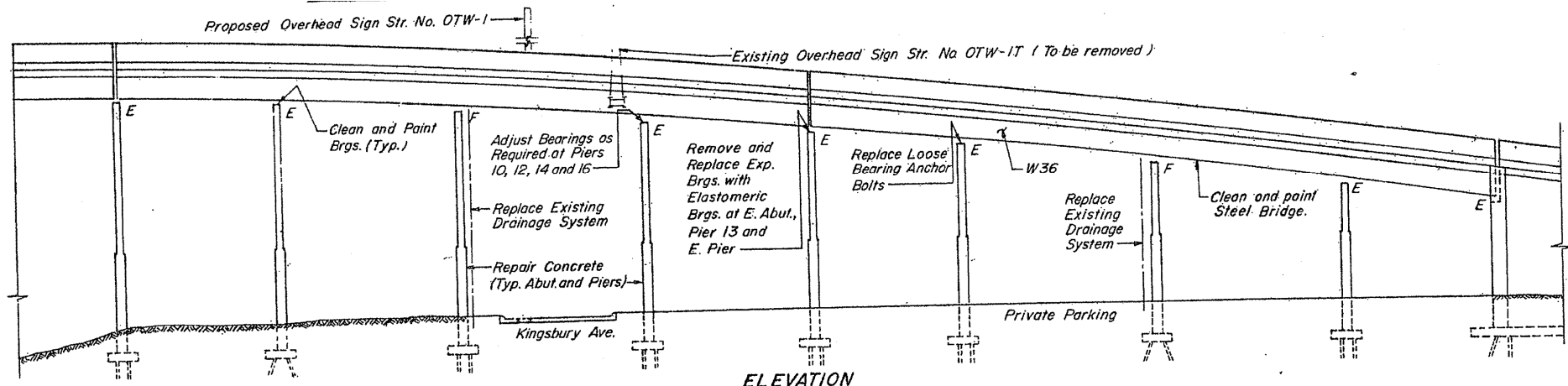
PLAN DIMENSIONS AND DETAILS RELATIVE TO EXISTING PLANS ARE SUBJECT TO NOMINAL CONSTRUCTION VARIATIONS. THE CONTRACTOR SHALL FIELD VERIFY EXISTING DIMENSIONS AND DETAILS AFFECTING NEW CONSTRUCTION AND MAKE NECESSARY APPROVED ADJUSTMENTS PRIOR TO CONSTRUCTION OR ORDERING OF MATERIALS. SUCH VARIATIONS SHALL NOT BE CAUSE FOR ADDITIONAL COMPENSATION FOR A CHANGE IN SCOPE OF THE WORK, HOWEVER, THE CONTRACTOR WILL BE PAID FOR THE QUANTITY ACTUALLY FURNISHED BASED AT THE UNIT PRICE BID FOR THE WORK.

THE CONTRACTOR SHALL BE REQUIRED TO PROVIDE ACCESS TO ABUTTING PROPERTIES AT ALL TIMES DURING THE CONSTRUCTION OF THIS PROJECT.

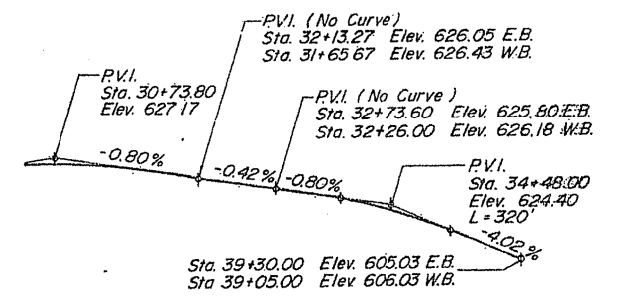
ACCESS TO THE BRIDGE TENDER HOUSES SHALL BE COORDINATED WITH DARRYL ROUSE OF THE CHICAGO DEPARTMENT OF TRANSPORTATION AT 312-745-3115 OR AT DARRYL.ROUSE@CITYOFCHICAGO.ORG

FILE NAME :	USER NAME : midya	DESIGNED -	REVISED -	<b>STATE OF ILLINOIS DEPARTMENT OF TRANSPORTATION</b>	<b>INDEX OF SHEETS, STATE STANDARDS AND GENERAL NOTES</b>		F.A.P. RTE.	SECTION	COUNTY	TOTAL SHEETS	SHEET NO.
p:\11084EBIDINTEG\Illinois.gov\WIDOT\Documents\IDOT Offices\District 1\Projects\IDIB\BROWDato\Design\DI04B16-1kt-plan.dgn	CHECKED -	REVISED -	383				13030.18.41BR	COOK	23	2	
PLOT SCALE = 100.0000 1" = 10'	CHECKED -	REVISED -	CONTRACT NO. 62867								
PLOT DATE = 10/27/2015	DATE -	REVISED -	ILLINOIS FED. AID PROJECT								
Scale:	SHEET	OF	SHEETS	STA.	TO	STA.					

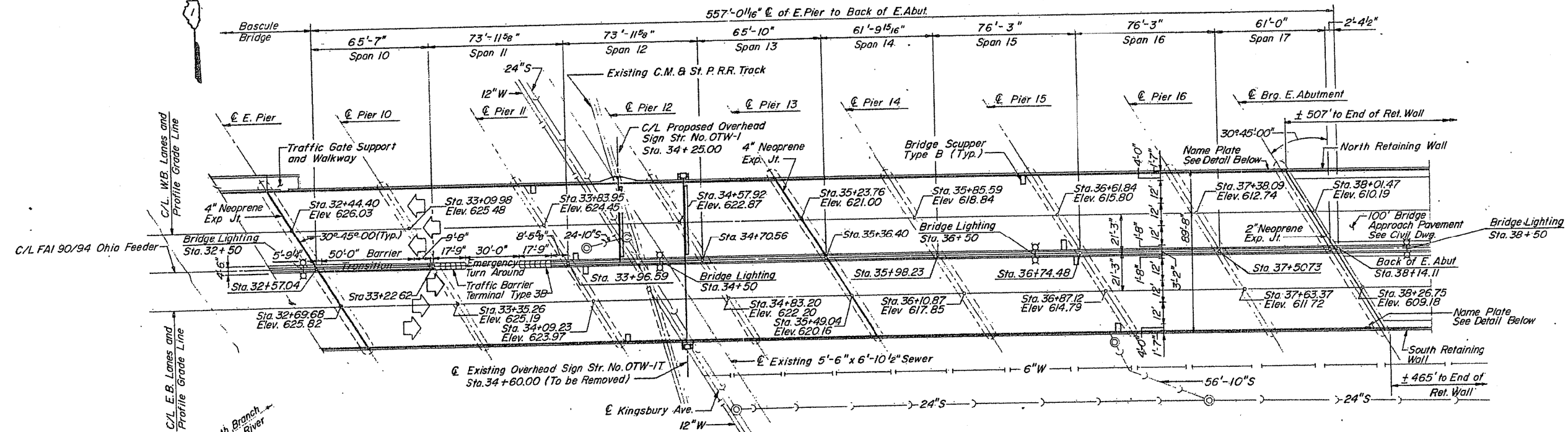




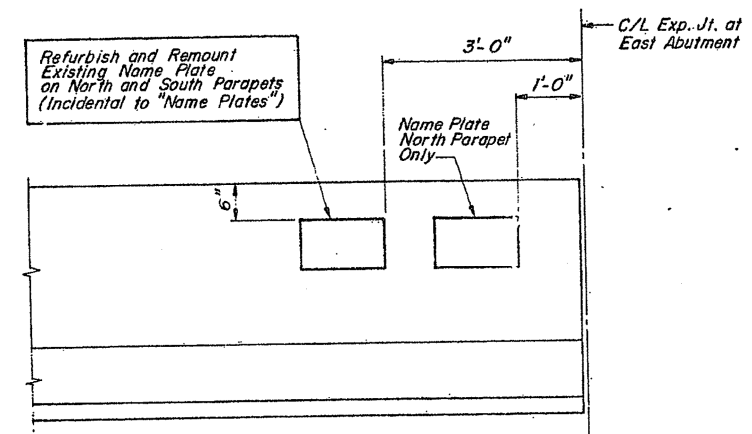
**ELEVATION**



**PROPOSED PROFILE**



**PLAN**



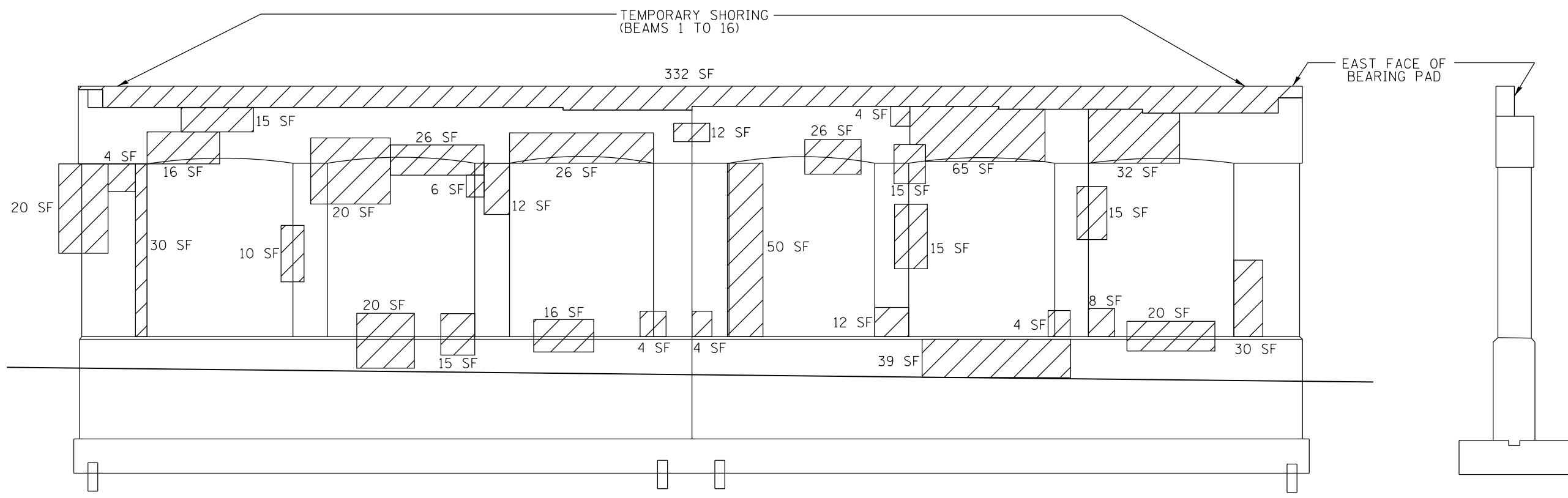
**NAME PLATE LOCATION DETAIL**  
NORTH PARAPET ELEVATION SHOWN  
SOUTH PARAPET ELEVATION (Similar Without Name Plate)

STATION 35+36.40  
REBUILT 199... BY  
STATE OF ILLINOIS  
SECTION  
F.A. PROJ.  
LOADING HS 20  
STR. NO. 016-1053

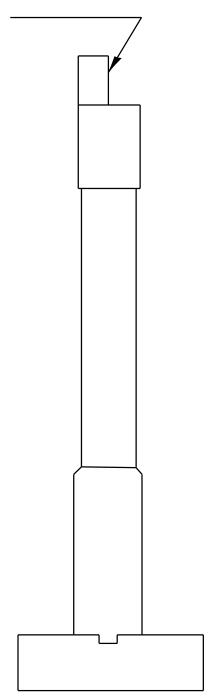
**NAME PLATE**  
(See Std. 2113)

**FOR INFORMATION ONLY**

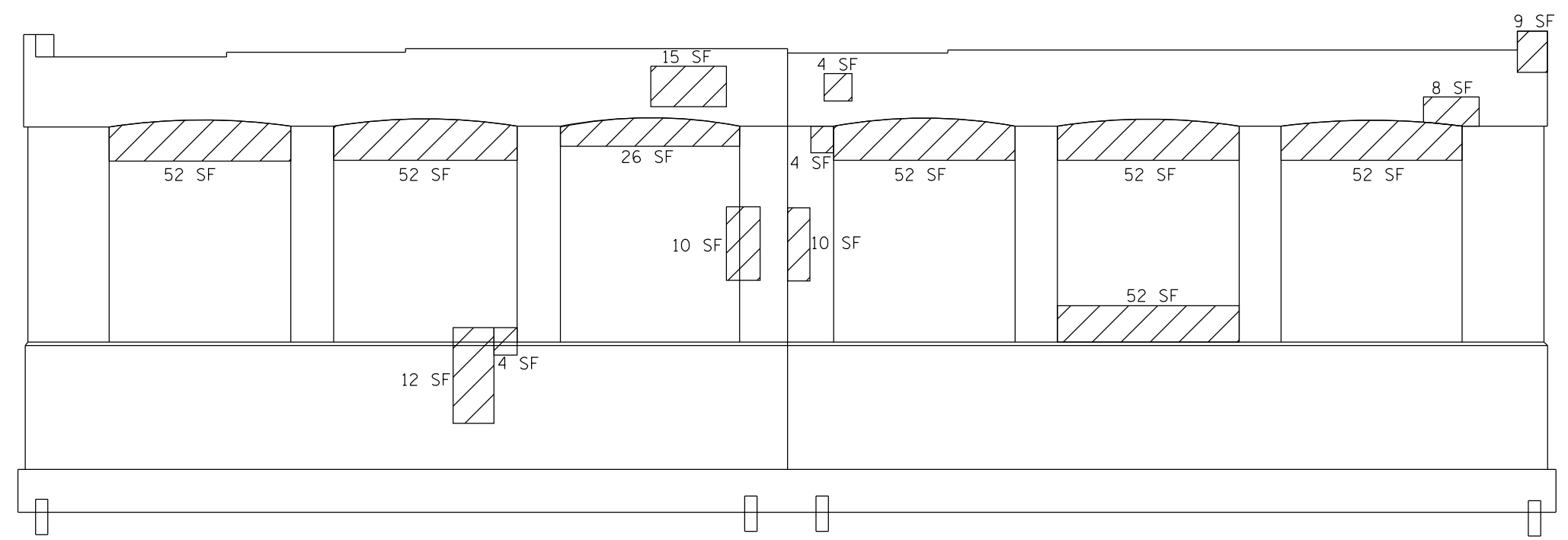
FILE NAME =	USER NAME = pyzenowskirb	DESIGNED -	REVISED -	<b>STATE OF ILLINOIS DEPARTMENT OF TRANSPORTATION</b>	<b>GENERAL PLAN &amp; ELEVATION SN 016-1053</b>				F.A.P. RTE.	SECTION	COUNTY	TOTAL SHEETS	SHEET NO.
pw:\IL084EBIDINTEG\illinois.gov\PIWIDOT\Documents\IDOT Offices\District 1\Projects\DI04816\Design\DI04816-shr-plan.dgn		CHECKED -	REVISED -		383	(3030.18.4)BR	COOK	23	4				
Default		PLOT SCALE = 100.0000' / in.	REVISED -		SCALE: SHEET OF SHEETS STA. TO STA.				CONTRACT NO. 62B67				
		PLOT DATE = 10/22/2015	REVISED -		ILLINOIS FED. AID PROJECT								



ELEVATION  
(Looking East)



EAST FACE OF  
BEARING PAD



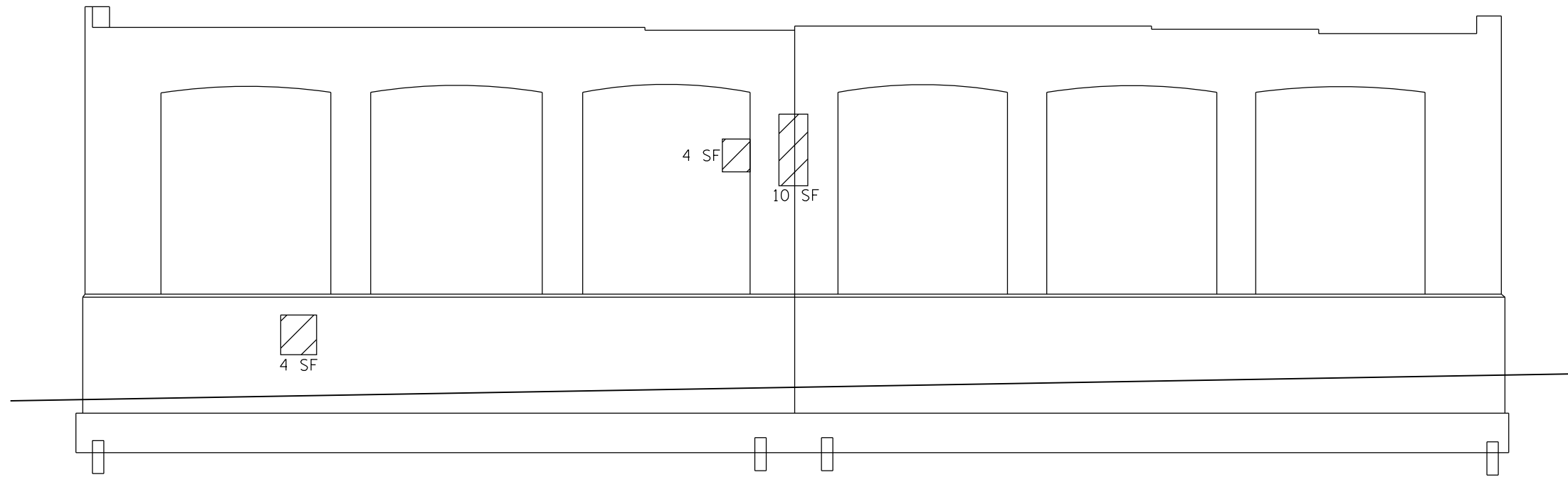
ELEVATION  
(Looking West)

**LEGEND:**

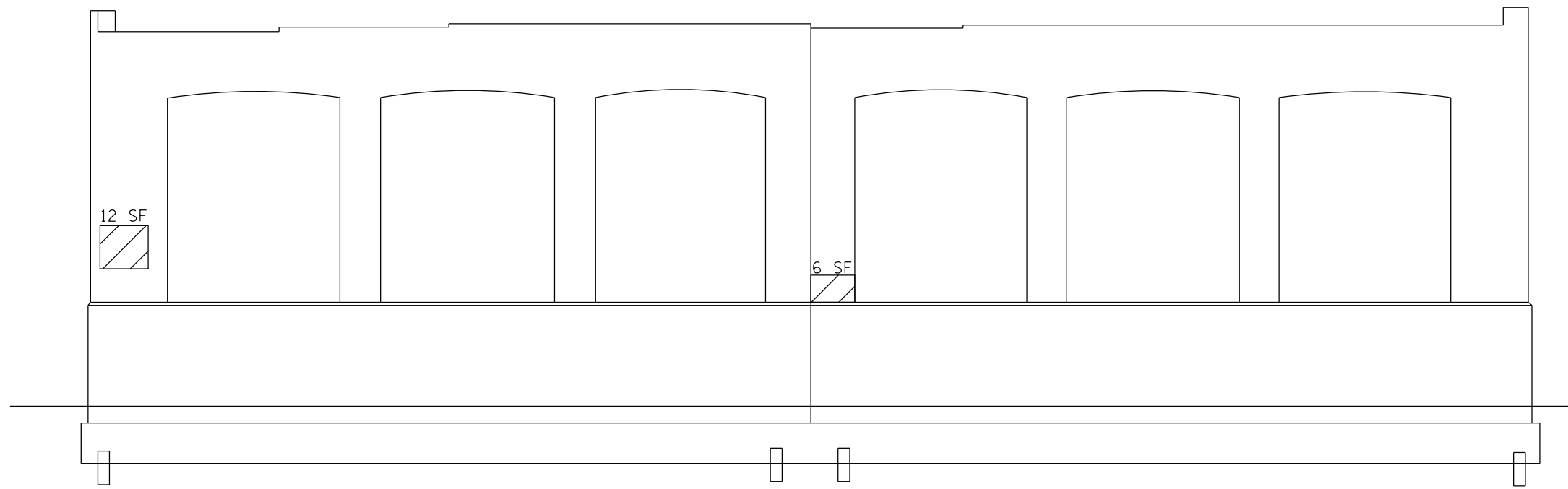
STRUCTURAL REPAIR OF CONCRETE  
(DEPTH EQUAL TO OR LESS THAN 5")

**BILL OF MATERIALS – EAST PIER**

ITEM	UNIT	QUANTITY
STRUCTURAL REPAIR OF CONCRETE (DEPTH EQUAL TO OR LESS THAN 5")	SO. FT.	1291
TEMPORARY SHORING AND CRIBBING	EACH	16

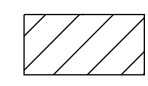


ELEVATION  
(Looking East)



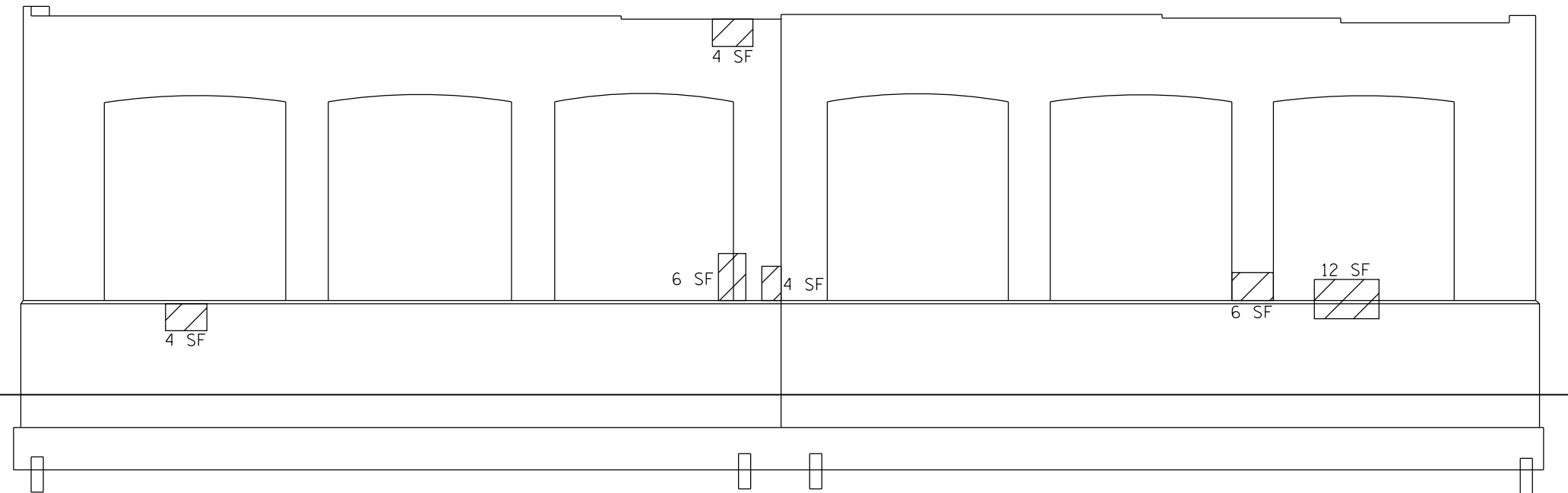
ELEVATION  
(Looking West)

**LEGEND:**

 STRUCTURAL REPAIR OF CONCRETE  
(DEPTH EQUAL TO OR LESS THAN 5")

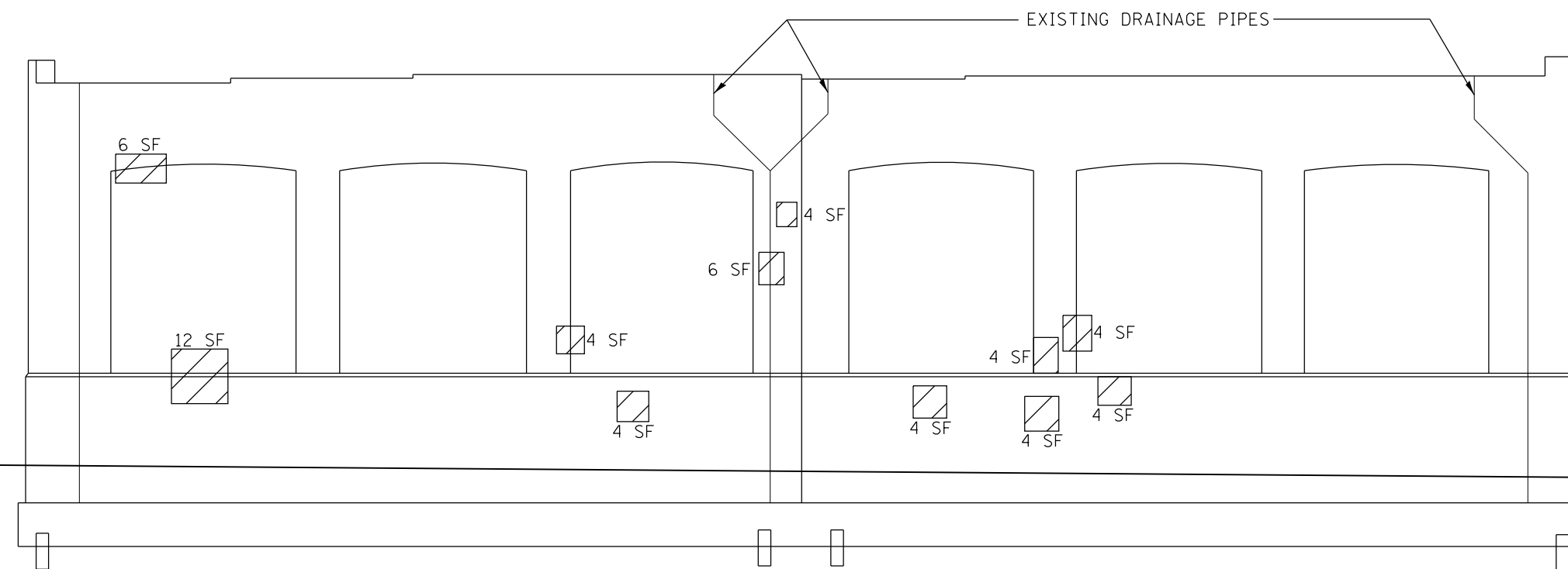
**BILL OF MATERIALS – PIER 10**

ITEM	UNIT	QUANTITY
STRUCTURAL REPAIR OF CONCRETE (DEPTH EQUAL TO OR LESS THAN 5")	SQ. FT.	36




ELEVATION  
(Looking East)

**NOTE:**  
REMOVAL AND RECONNECT OF EXISTING DRAINAGE PIPES  
IF NECESSARY INCLUDED IN COST OF STRUCTURAL REPAIR  
OF CONCRETE (DEPTH EQUAL TO OR LESS THAN 5")



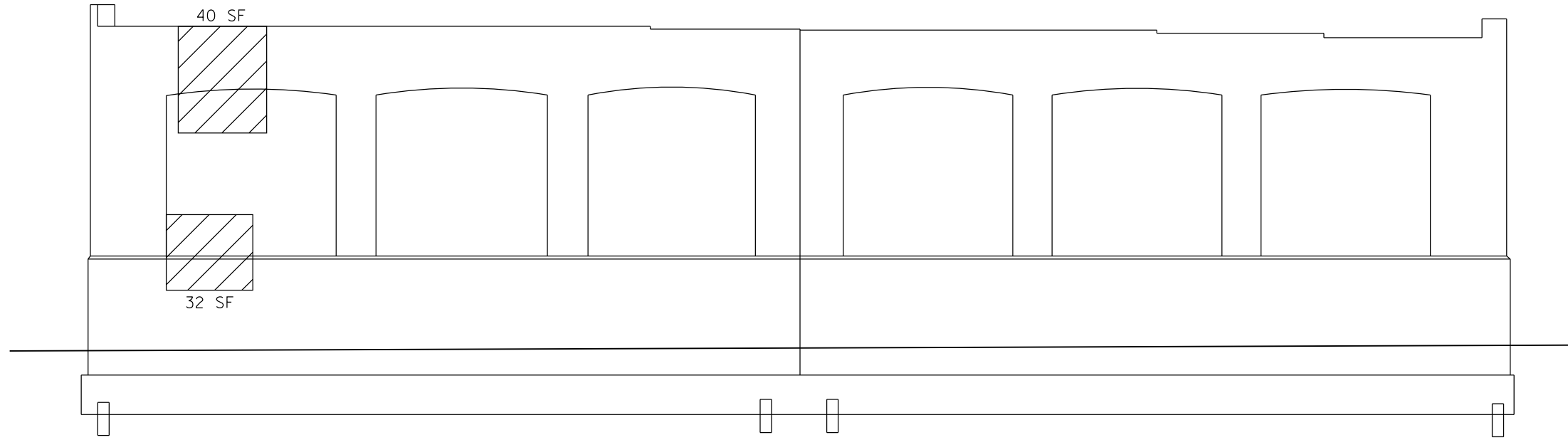
ELEVATION  
(Looking West)

**LEGEND:**

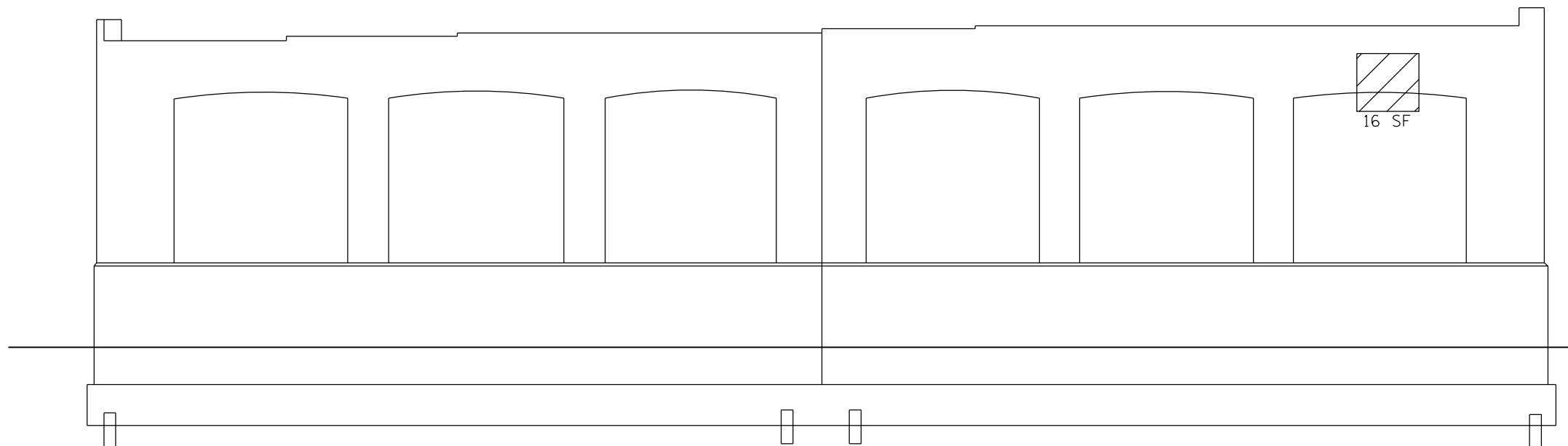
 STRUCTURAL REPAIR OF CONCRETE  
(DEPTH EQUAL TO OR LESS THAN 5")

**BILL OF MATERIALS – PIER 11**

ITEM	UNIT	QUANTITY
STRUCTURAL REPAIR OF CONCRETE (DEPTH EQUAL TO OR LESS THAN 5")	SO. FT.	92




ELEVATION  
( Looking East)



ELEVATION  
( Looking West)

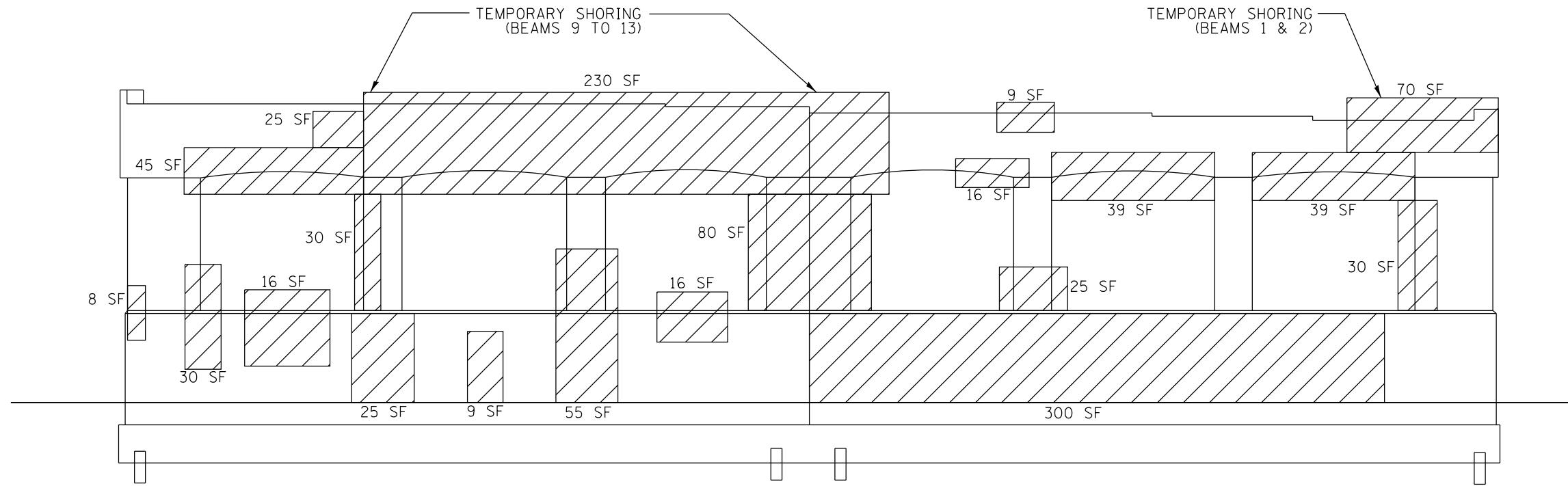
**LEGEND:**

 STRUCTURAL REPAIR OF CONCRETE  
(DEPTH EQUAL TO OR LESS THAN 5")

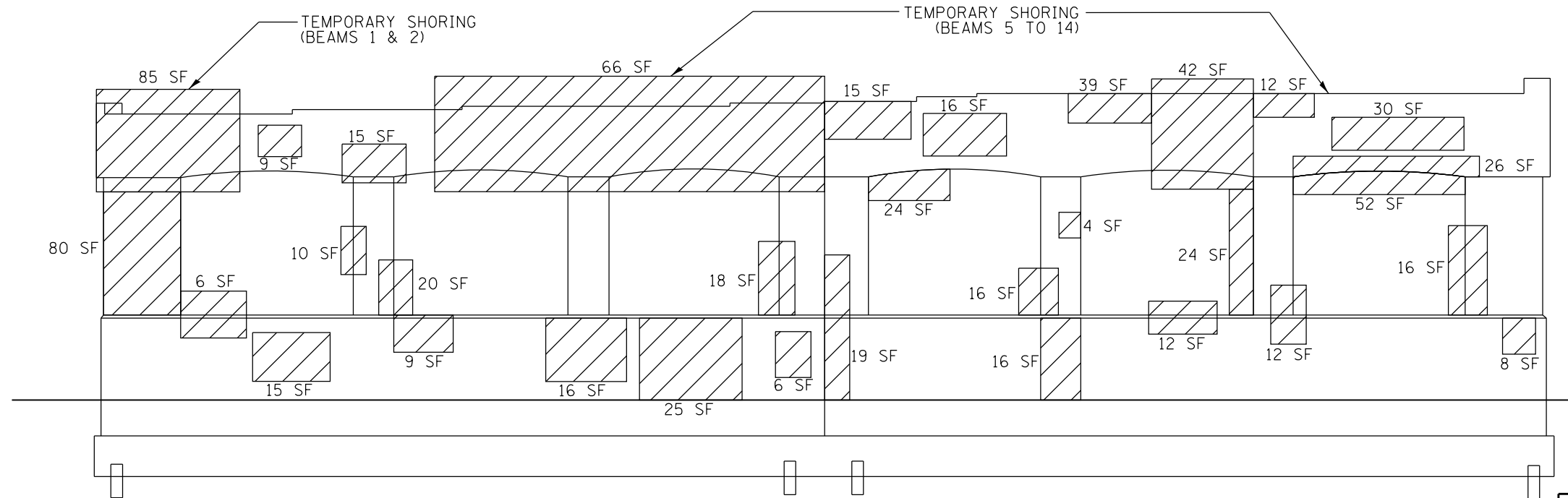
**BILL OF MATERIALS – PIER 12**

ITEM	UNIT	QUANTITY
STRUCTURAL REPAIR OF CONCRETE (DEPTH EQUAL TO OR LESS THAN 5")	SQ. FT.	88



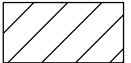


ELEVATION  
(Looking East)



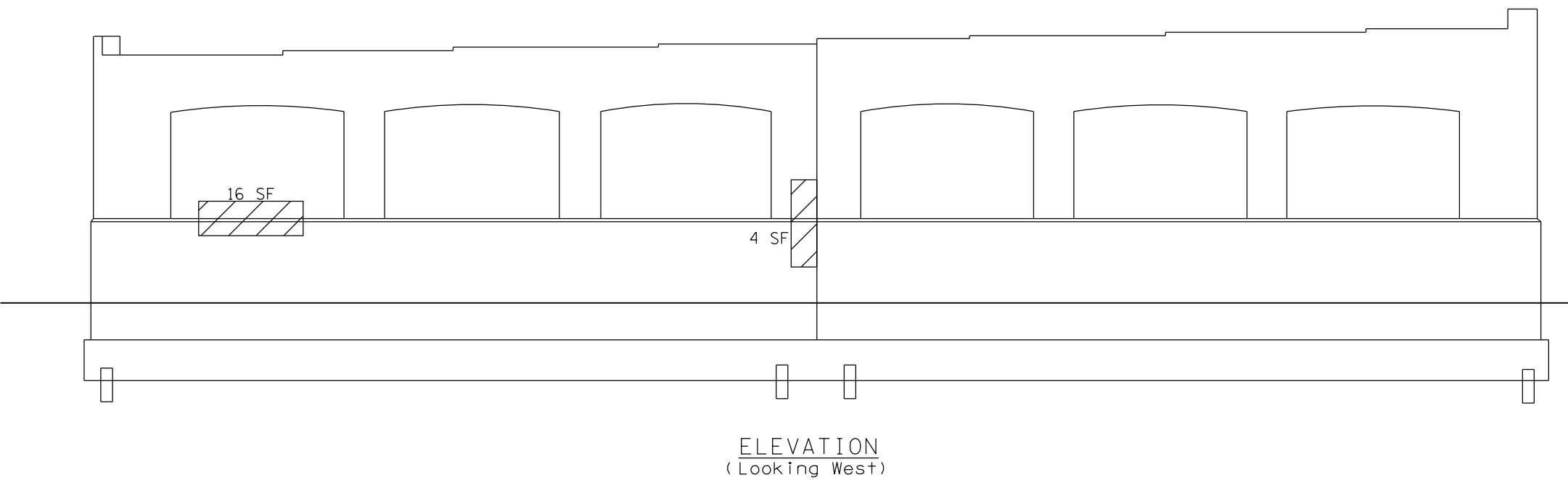
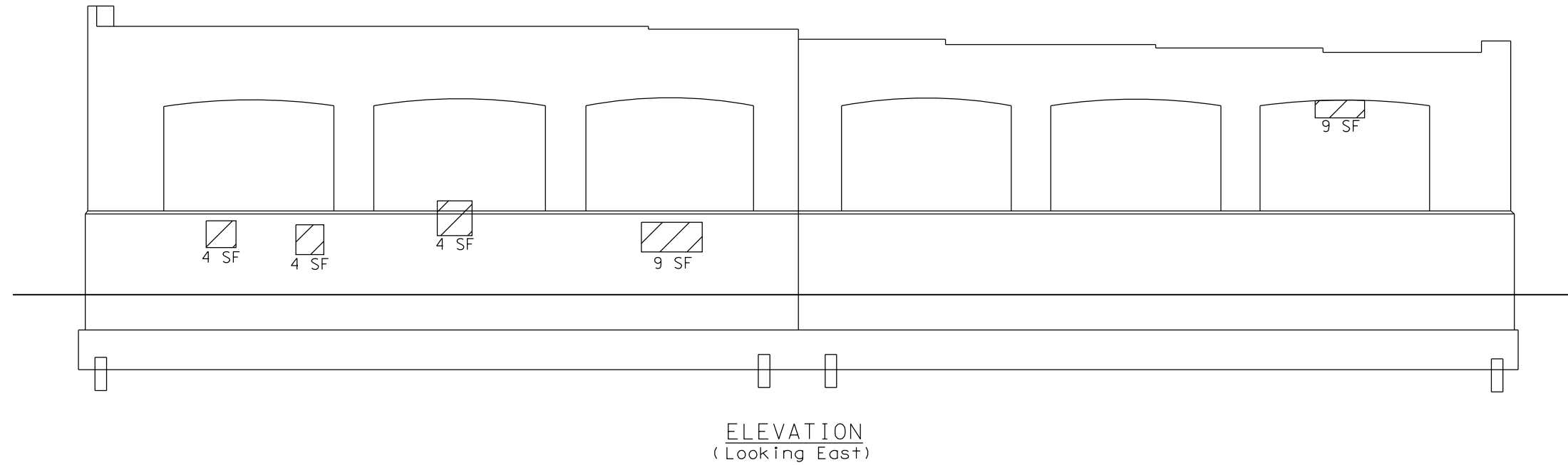
ELEVATION  
(Looking West)

**LEGEND:**

 STRUCTURAL REPAIR OF CONCRETE  
(DEPTH EQUAL TO OR LESS THAN 5")

**BILL OF MATERIALS – PIER 13**

ITEM	UNIT	QUANTITY
STRUCTURAL REPAIR OF CONCRETE (DEPTH EQUAL TO OR LESS THAN 5")	SQ. FT.	2017
TEMPORARY SHORING AND CRIBBING	EACH	19



**LEGEND:**

STRUCTURAL REPAIR OF CONCRETE  
(DEPTH EQUAL TO OR LESS THAN 5'')

**BILL OF MATERIALS – PIER 14**

ITEM	UNIT	QUANTITY
STRUCTURAL REPAIR OF CONCRETE (DEPTH EQUAL TO OR LESS THAN 5'')	SQ. FT.	50

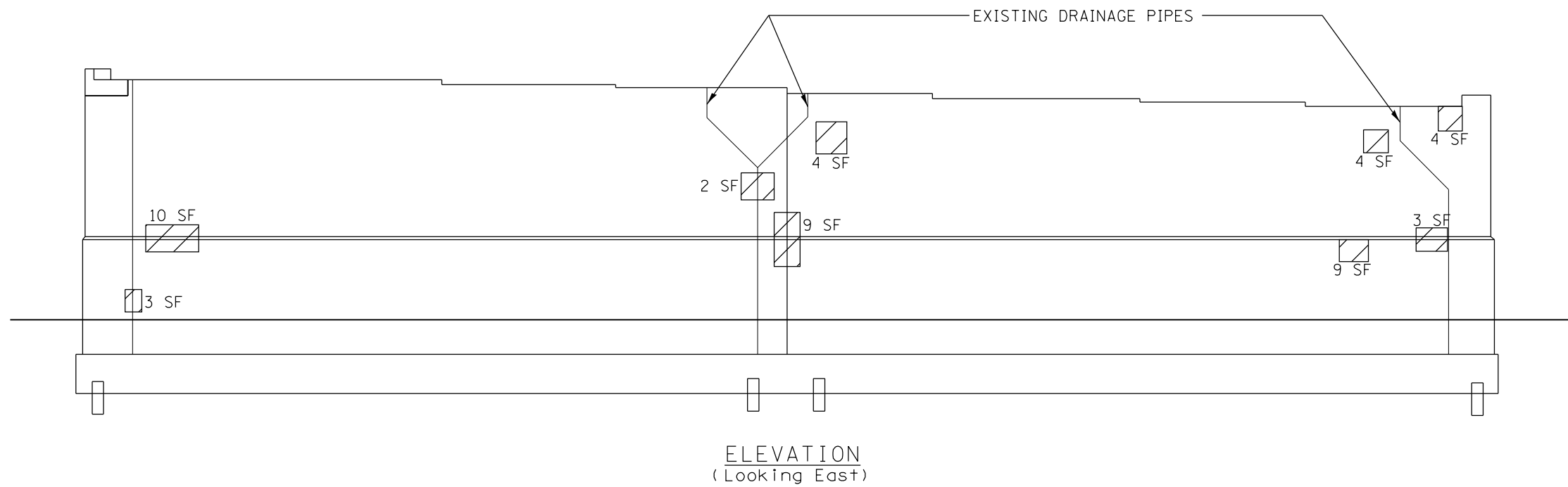
FILE NAME =	USER NAME = pyzenowski	DESIGNED -	REVISED -
p:\11\084EBIDINTEG.illinois.gov\PIWIDOT\Documents\IDOT Offices\District 1\Projects\DI04816\Design\DI04816-sht-plan.dgn		CHECKED -	REVISED -
Default	PLOT DATE = 10/22/2015	DATE -	REVISED -

**STATE OF ILLINOIS  
DEPARTMENT OF TRANSPORTATION**

**PIER 14  
SN 016-1053**

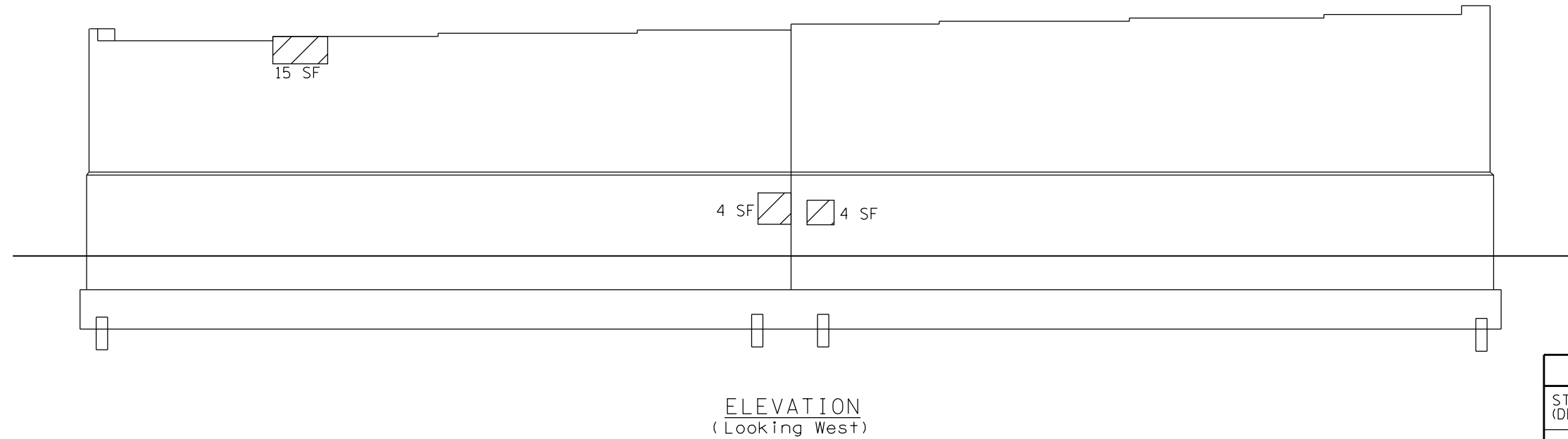
SCALE: SHEET OF SHEETS STA. TO STA.

F.A.P. RTE.	SECTION	COUNTY	TOTAL SHEETS	SHEET NO.
383	(3030.1&.4)BR	COOK	23	10
CONTRACT NO. 62B67				
ILLINOIS FED. AID PROJECT				



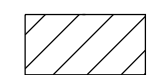
ELEVATION  
(Looking East)

NOTE:  
REMOVAL AND RECONNECT OF EXISTING DRAINAGE PIPES  
IF NECESSARY INCLUDED IN COST OF STRUCTURAL REPAIR  
OF CONCRETE (DEPTH EQUAL TO OR LESS THAN 5")



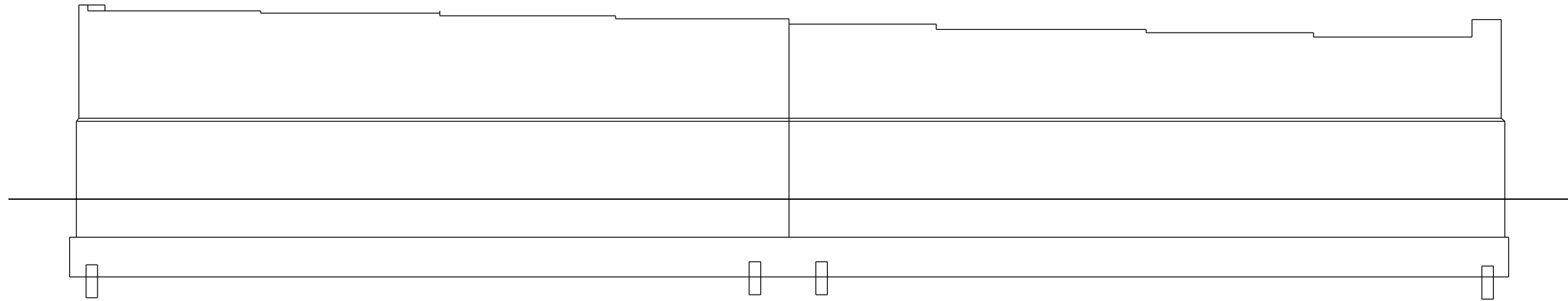
ELEVATION  
(Looking West)

**LEGEND:**

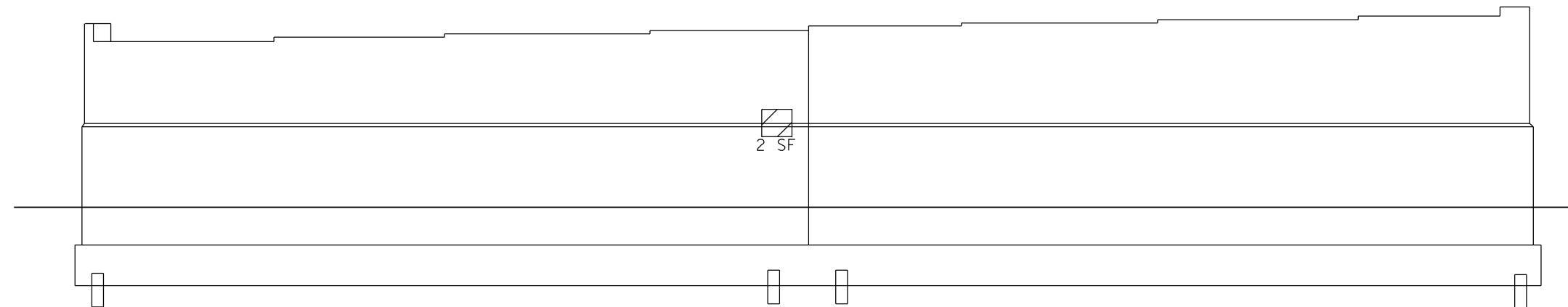
 STRUCTURAL REPAIR OF CONCRETE  
(DEPTH EQUAL TO OR LESS THAN 5")

**BILL OF MATERIALS – PIER 15**

ITEM	UNIT	QUANTITY
STRUCTURAL REPAIR OF CONCRETE (DEPTH EQUAL TO OR LESS THAN 5")	SQ. FT.	71



ELEVATION  
(Looking East)



ELEVATION  
(Looking West)

**LEGEND:**



STRUCTURAL REPAIR OF CONCRETE  
(DEPTH EQUAL TO OR LESS THAN 5")

**BILL OF MATERIALS – PIER 16**

ITEM	UNIT	QUANTITY
STRUCTURAL REPAIR OF CONCRETE (DEPTH EQUAL TO OR LESS THAN 5")	SO. FT.	2

FILE NAME =	USER NAME = pyrzezowski	DESIGNED -	REVISED -
pw:\IL\084EBIDINTEG.illinois.gov\PWIDOT\Documents\IDOT Offices\District 1\Projects\DI04816\Design\DI04816-sht-plan.dgn		CHECKED -	REVISED -
Default	PLOT SCALE = 100.0000' / in.	DATE -	REVISED -
	PLOT DATE = 10/22/2015		

**STATE OF ILLINOIS  
DEPARTMENT OF TRANSPORTATION**

<b>PIER 16</b>			
<b>SN 016-1053</b>			
SCALE:	SHEET	OF	SHEETS
		STA.	TO STA.

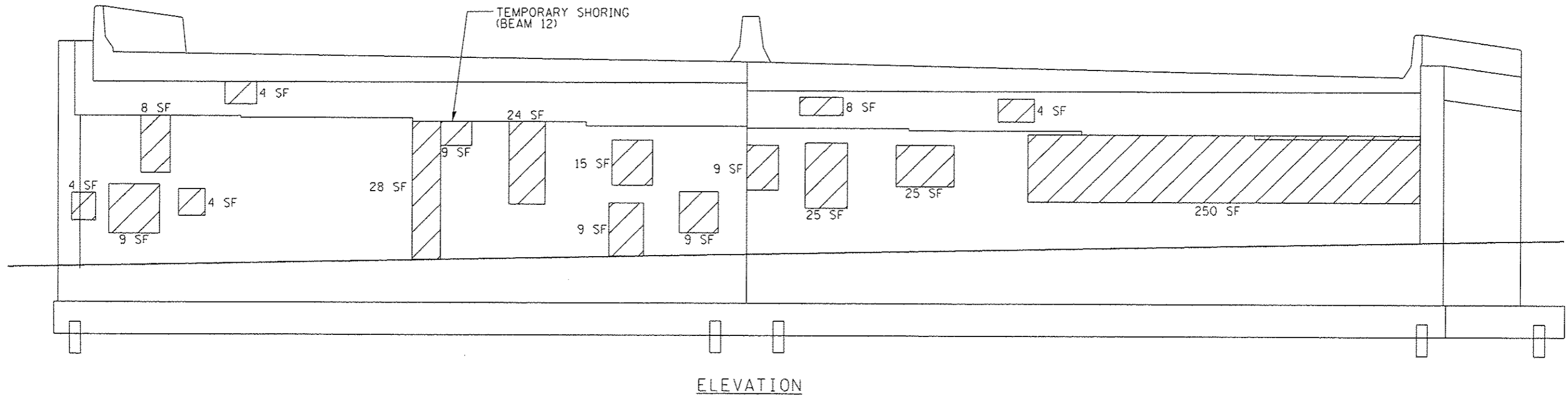
F.A.P. RTE.	SECTION	COUNTY	TOTAL SHEETS	SHEET NO.
383	(3030.1&.4)BR	COOK	23	12
CONTRACT NO. 62B67				
ILLINOIS FED. AID PROJECT				

**REACTION TABLE**

	E. Pier	Pier 10	Pier 11	Pier 12	W. Brg.	E. Brg.	Pier 14	Pier 15	Pier 16	E Abut.
R DL (kips)	25.7	80.7	75.3	80.8	25.8	23.9	80.1	80.6	80.2	23.9
R LL (kips)	35.5	48.1	48.2	48.2	35.6	35.1	44.8	49	47.7	35
R Imp (kips)	9.2	9.1	8.8	9.1	9.2	9.5	12	8.8	9.1	9.4
R total Kips	70.4	137.9	132.3	138.1	70.6	68.5	136.9	138.4	137	68.3

**BILL OF MATERIALS – EAST ABUTMENT**

ITEM	UNIT	QUANTITY
STRUCTURAL REPAIR OF CONCRETE (DEPTH EQUAL TO OR LESS THAN 5")	SQ. FT.	444
TEMPORARY SHORING AND CRIBBING	EACH	1



**TOTAL BILL OF MATERIALS (SN 016-1053)**

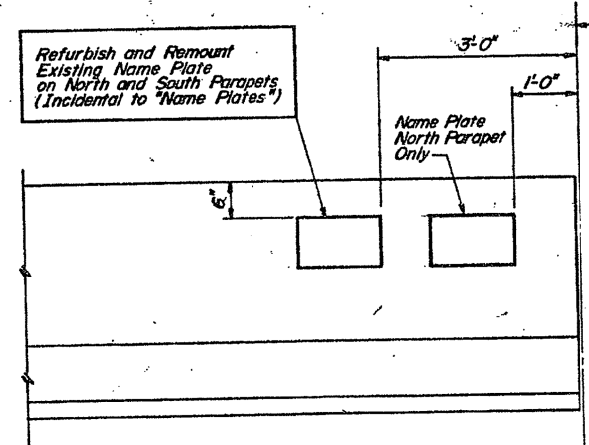
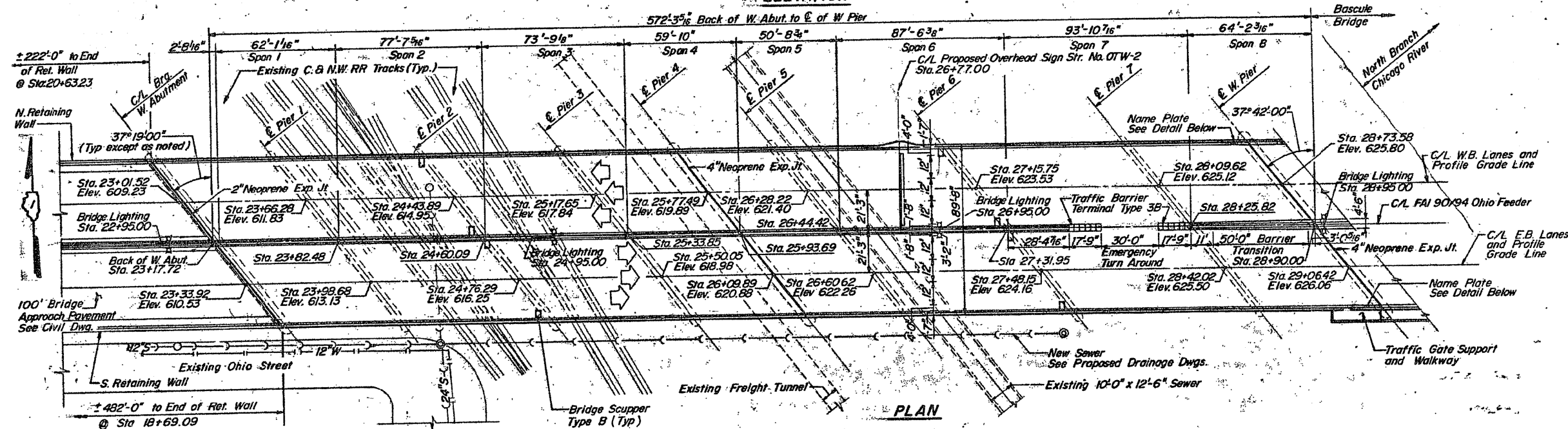
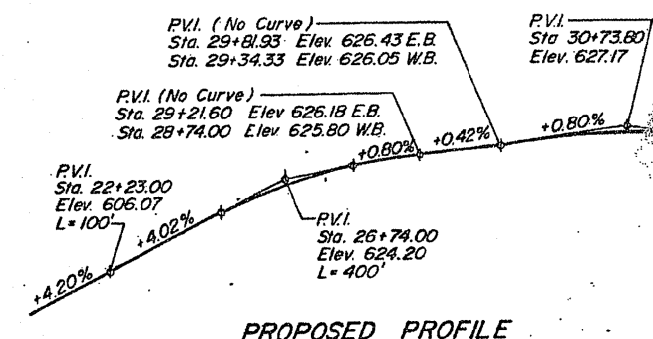
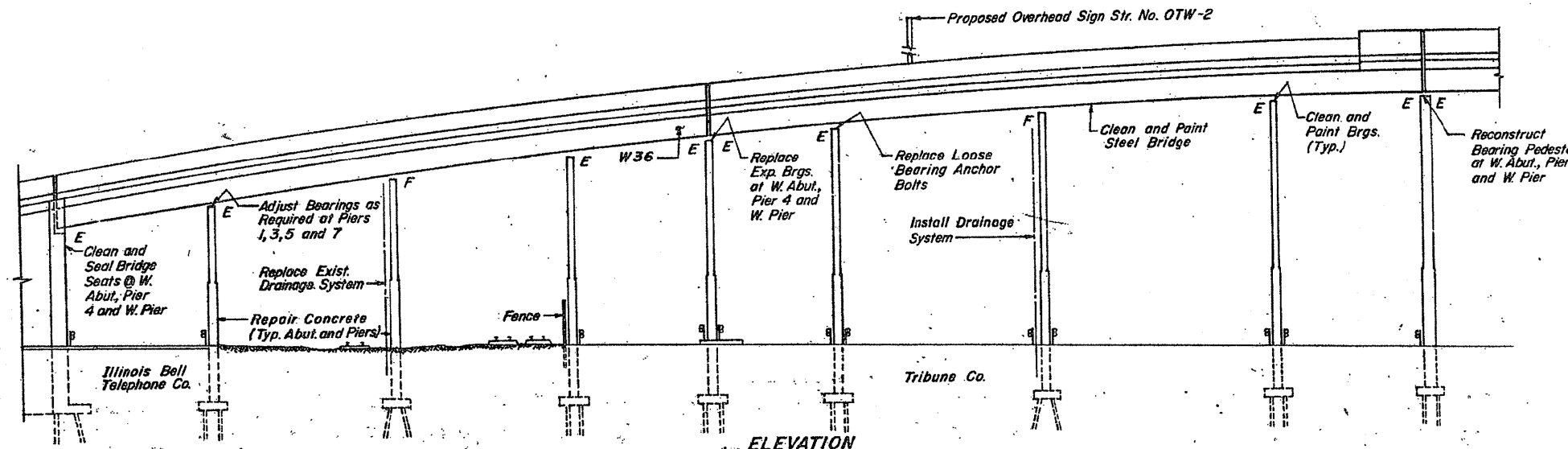
ITEM	UNIT	QUANTITY
STRUCTURAL REPAIR OF CONCRETE (DEPTH EQUAL TO OR LESS THAN 5")	SQ. FT.	4091
TEMPORARY SHORING AND CRIBBING	EACH	34

**LEGEND:**

STRUCTURAL REPAIR OF CONCRETE (DEPTH EQUAL TO OR LESS THAN 5")



*David Carl Puzey 11/19/15  
Expires 11/30/16*



STATION 25+93.69  
REBUILT 199\_ BY  
STATE OF ILLINOIS  
SECTION  
F.A. PROJ.  
LOADING HS 20  
STR. NO. 016-1061

**NAME PLATE**  
(See Std. 2113)

**NAME PLATE LOCATION DETAIL**  
NORTH PARAPET ELEVATION SHOWN  
SOUTH PARAPET ELEVATION (Similar  
Without Name Plate)

**FOR INFORMATION ONLY**

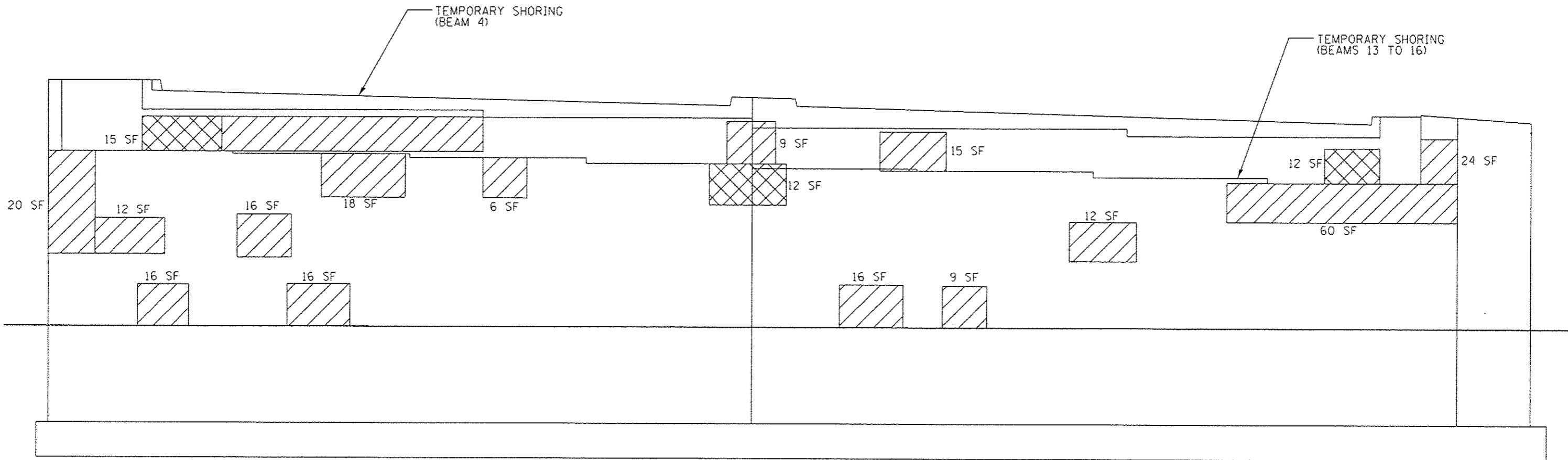
FILE NAME =	USER NAME = pyrzanowski	DESIGNED -	REVISED -	<b>STATE OF ILLINOIS DEPARTMENT OF TRANSPORTATION</b>	<b>GENERAL PLAN &amp; ELEVATION SN 016-1061</b>	F.A.P. RTE.	SECTION	COUNTY	TOTAL SHEETS	SHEET NO.	
pw\11084EBIDINTEG\illinois.gov\PIWIDOT\Documents\DOT Offices\District 1\Projects\DI04816\Design\DI04816-shr-plan.dgn		CHECKED -	REVISED -			383	(3030.18.4)BR	COOK	23	14	
PLOT SCALE = 100.0000' / in.		DATE -	REVISED -			CONTRACT NO. 62B67					
Default						ILLINOIS FED. AID PROJECT					

**REACTION TABLE**

	W. Abut.	Pier 1	Pier 2	Pier 3	W. Brg.	E. Brg.	Pier 5	Pier 6	Pier 7	Pier 8 (W. Pier)
R DL (kips)	24.2	82.1	80.1	76.9	23.2	17.4	84.5	106.3	97.9	24.5
R LL (kips)	35.3	48.1	48.8	46.8	34.7	33.7	47.5	54	51	35.1
R Imp (kips)	9.4	9.1	8.8	9.1	9.5	9.6	9.1	8.8	9.1	9.3
R total Kips	68.9	139.3	137.7	132.8	67.4	60.7	141.1	169.1	158	68.9

**BILL OF MATERIALS – EAST ABUTMENT**

ITEM	UNIT	QUANTITY
STRUCTURAL REPAIR OF CONCRETE (DEPTH EQUAL TO OR LESS THAN 5")	SO. FT.	242
STRUCTURAL REPAIR OF CONCRETE (DEPTH GREATER THAN 5")	SO. FT.	42
TEMPORARY SHORING AND CRIBBING	EACH	5




ELEVATION

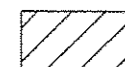
**TOTAL BILL OF MATERIALS (SN 016-1061)**

ITEM	UNIT	QUANTITY
STRUCTURAL REPAIR OF CONCRETE (DEPTH EQUAL TO OR LESS THAN 5")	SO. FT.	3412
STRUCTURAL REPAIR OF CONCRETE (DEPTH GREATER THAN 5")	SO. FT.	42
TEMPORARY SHORING AND CRIBBING	EACH	24
RAILROAD PROTECTIVE LIABILITY INSURANCE	L SUM	1

**LEGEND:**

 STRUCTURAL REPAIR OF CONCRETE (DEPTH GREATER THAN 5")

**LEGEND:**

 STRUCTURAL REPAIR OF CONCRETE (DEPTH EQUAL TO OR LESS THAN 5")



*David Carl Puzey 11/19/15*  
*Expires 11/30/16*

STATE OF ILLINOIS  
DEPARTMENT OF TRANSPORTATION

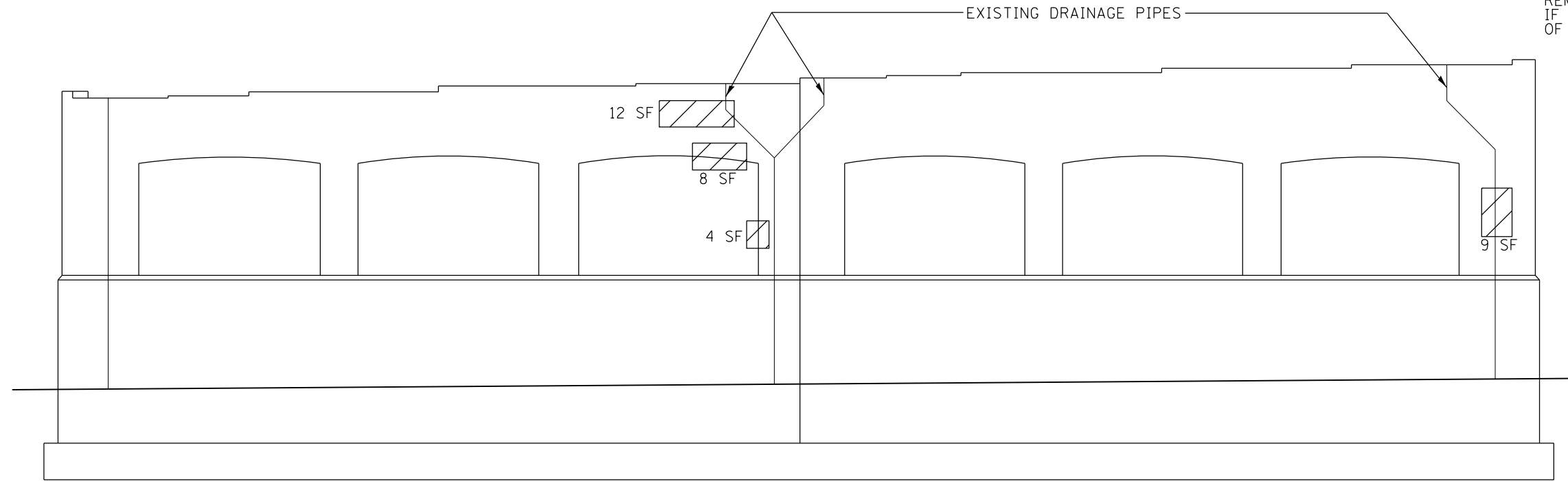
WEST ABUTMENT  
SN 016-1061

F.A.P. RTE.	SECTION	COUNTY	TOTAL SHEETS	SHEET NO.
383	(3030.18, 418R)	COOK	23	15
			CONTRACT NO. 62867	
ILLINOIS FED. AID PROJECT				

FILE NAME	USER NAME	DESIGNED	REVISIONS
p:\V\1084EBID\INTEG\Illinois.gov\PIDOT\Documents\IDOT Offices\District 1\Projects\0184EBID\0184EBID\Design\0184EBID-shr-plan.dgn	pyzzenowshrb	JAH	REVISIONS
			REVISIONS
			REVISIONS
			REVISIONS


SCALE: SHEET OF SHEETS STA. TO STA.

**NOTE:**  
 REMOVAL AND RECONNECT OF EXISTING DRAINAGE PIPES  
 IF NECESSARY INCLUDED IN COST OF STRUCTURAL REPAIR  
 OF CONCRETE (DEPTH EQUAL TO OR LESS THAN 5")



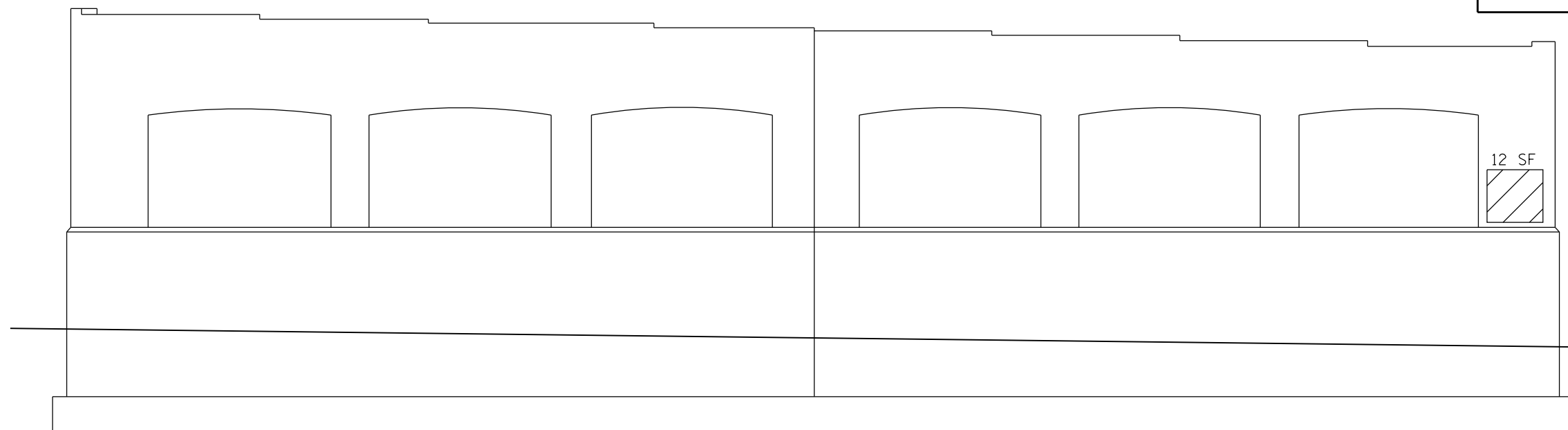
**ELEVATION**  
 (Looking East)

**LEGEND:**

 STRUCTURAL REPAIR OF CONCRETE  
 (DEPTH EQUAL TO OR LESS THAN 5")

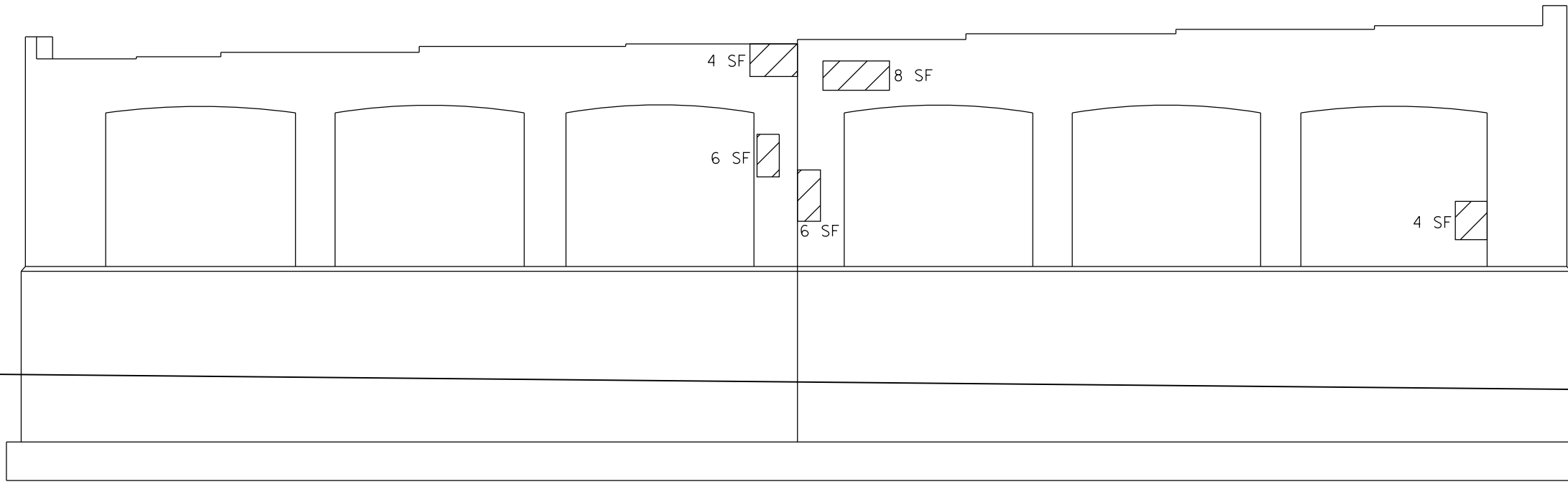
**BILL OF MATERIALS – PIER 2**

ITEM	UNIT	QUANTITY
STRUCTURAL REPAIR OF CONCRETE (DEPTH EQUAL TO OR LESS THAN 5")	SO. FT.	45
RAILROAD PROTECTIVE LIABILITY INSURANCE	L SUM	1




**ELEVATION**  
 (Looking West)





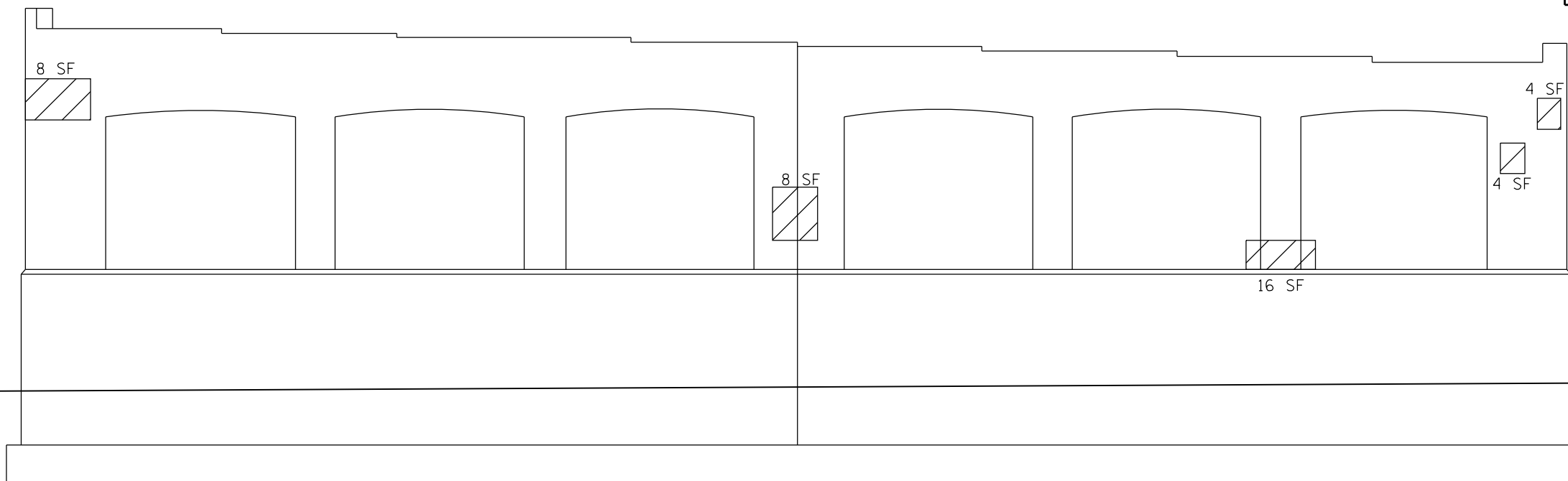
ELEVATION  
(Looking East)

**LEGEND:**

 STRUCTURAL REPAIR OF CONCRETE  
(DEPTH EQUAL TO OR LESS THAN 5")

**BILL OF MATERIALS – PIER 3**

ITEM	UNIT	QUANTITY
STRUCTURAL REPAIR OF CONCRETE (DEPTH EQUAL TO OR LESS THAN 5")	SQ. FT.	68



ELEVATION  
(Looking West)

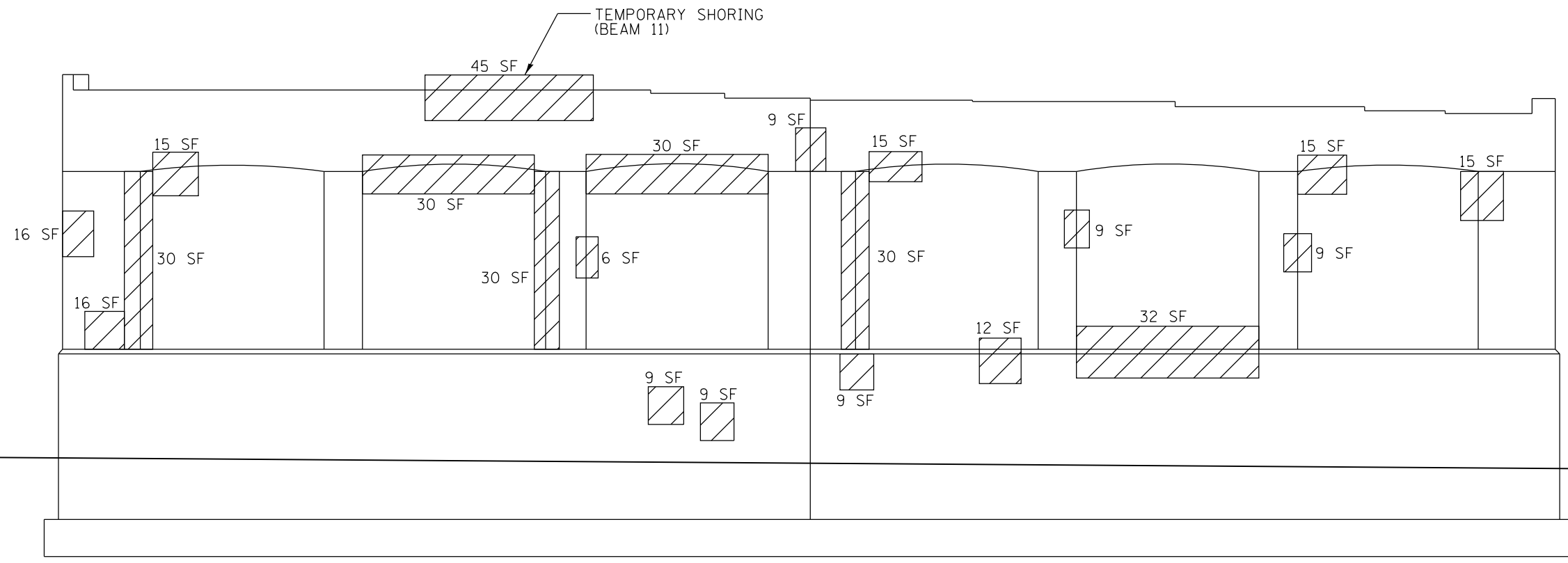
FILE NAME =	USER NAME = pyzenowski	DESIGNED -	REVISED -
p:\11\084EBID\INTEG\illinois.gov\PI\DOT\Documents\DOT Offices\District 1\Projects\DI04816\Design\DI04816-sht-plan.dgn		CHECKED -	REVISED -
Default	PLOT DATE = 10/22/2015	DATE -	REVISED -

**STATE OF ILLINOIS  
DEPARTMENT OF TRANSPORTATION**

**PIER 3  
SN 016-1061**


SCALE: SHEET OF SHEETS STA. TO STA.

F.A.P. RTE.	SECTION	COUNTY	TOTAL SHEETS	SHEET NO.
383	(3030.1&.4)BR	COOK	23	17
				CONTRACT NO. 62B67
ILLINOIS FED. AID PROJECT				



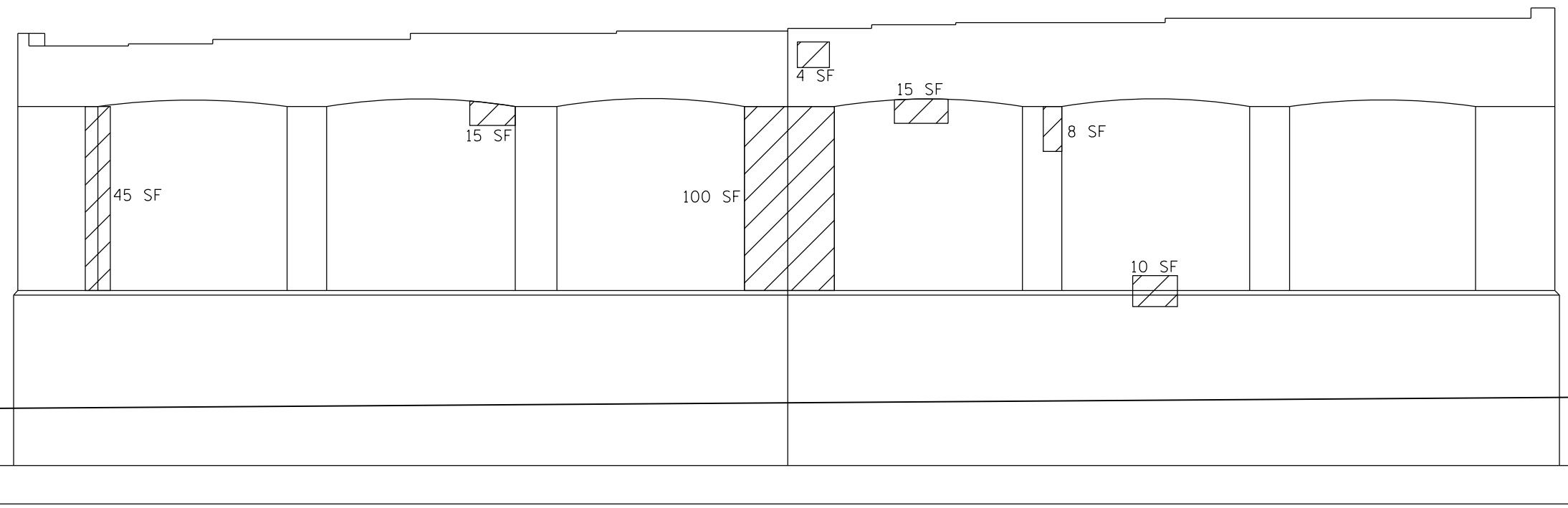
ELEVATION  
(Looking East)

**LEGEND:**

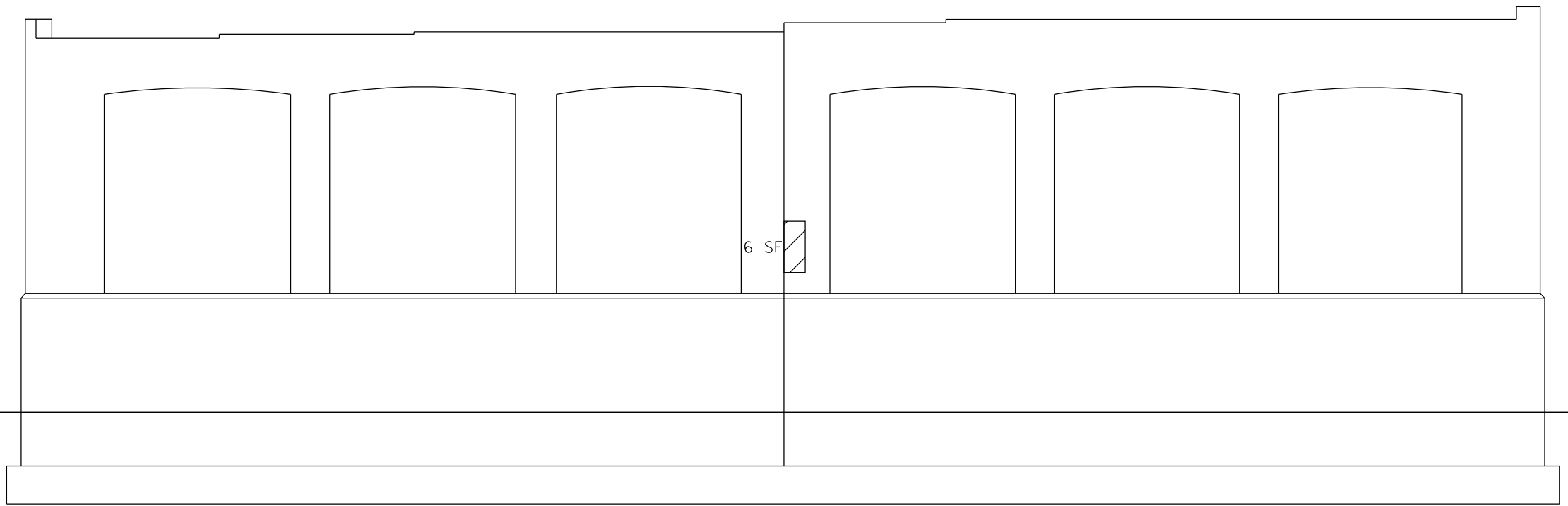
 STRUCTURAL REPAIR OF CONCRETE  
(DEPTH EQUAL TO OR LESS THAN 5")

**BILL OF MATERIALS – PIER 4**

ITEM	UNIT	QUANTITY
STRUCTURAL REPAIR OF CONCRETE (DEPTH EQUAL TO OR LESS THAN 5")	SQ. FT.	587
TEMPORARY SHORING AND CRIBBING	EACH	1




ELEVATION  
(Looking West)



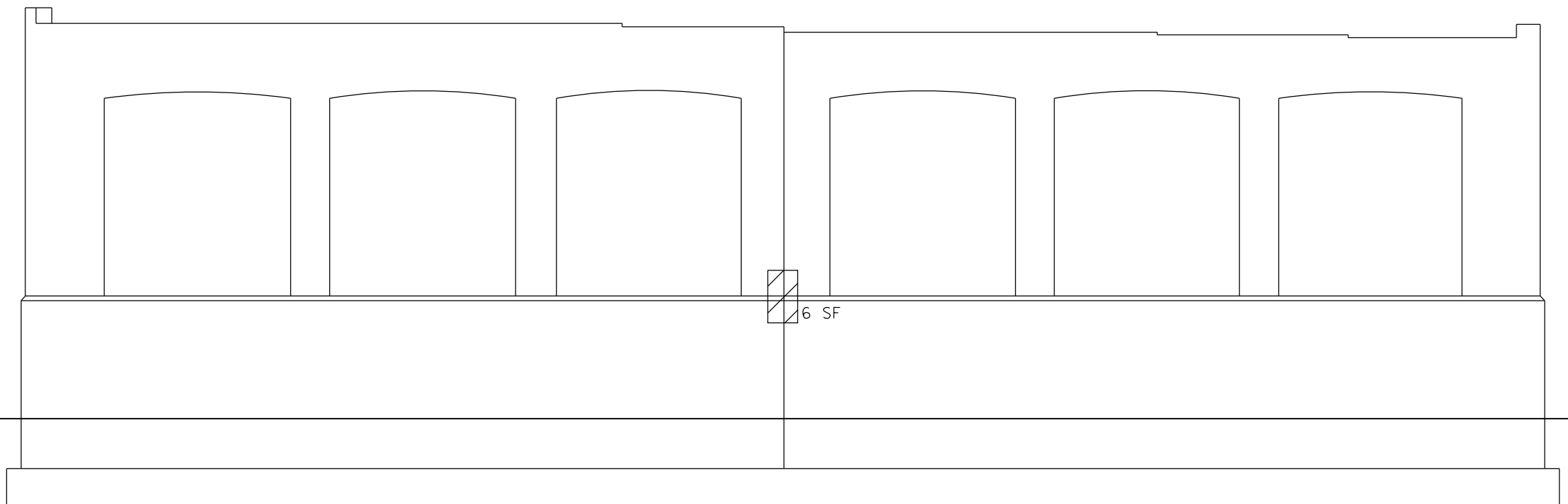
ELEVATION  
(Looking East)

**LEGEND:**

 STRUCTURAL REPAIR OF CONCRETE  
(DEPTH EQUAL TO OR LESS THAN 5")

**BILL OF MATERIALS – PIER 5**

ITEM	UNIT	QUANTITY
STRUCTURAL REPAIR OF CONCRETE (DEPTH EQUAL TO OR LESS THAN 5")	SO. FT.	12



ELEVATION  
(Looking West)

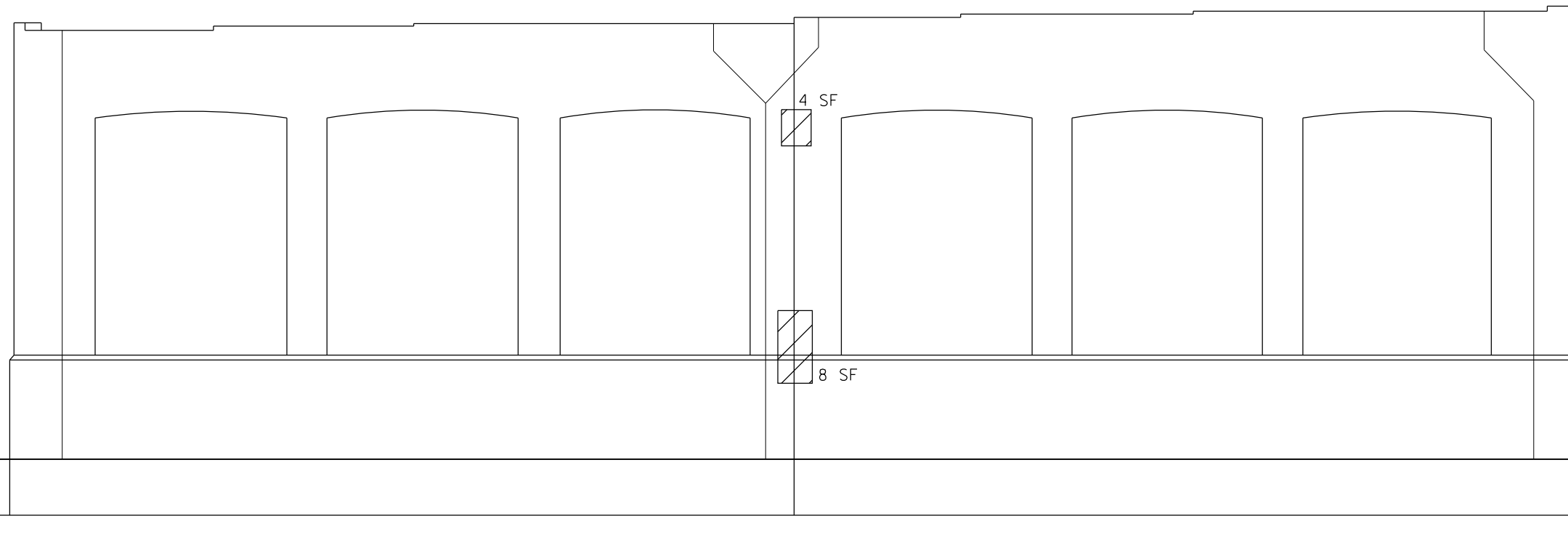
FILE NAME =	USER NAME = pyzzenowski	DESIGNED -	REVISED -
p:\11\084EBIDINTEG.illinois.gov\PIWIDOT\Documents\IDOT Offices\District 1\Projects\DI04816\Design\DI04816-sht-plan.dgn		CHECKED -	REVISED -
Default	PLOT DATE = 10/22/2015	DATE -	REVISED -

**STATE OF ILLINOIS  
DEPARTMENT OF TRANSPORTATION**

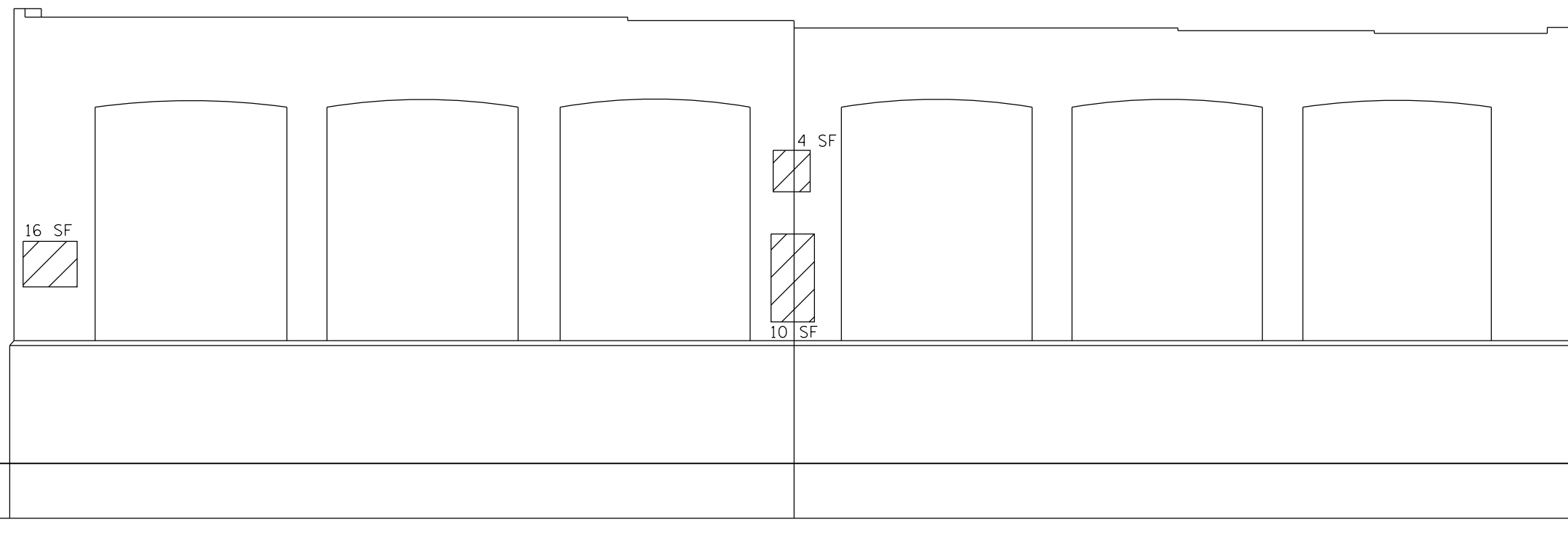
**PIER 5  
SN 016-1061**

SCALE: SHEET OF SHEETS STA. TO STA.

F.A.P. RTE.	SECTION	COUNTY	TOTAL SHEETS	SHEET NO.
383	(3030.1&.4)BR	COOK	23	19
CONTRACT NO. 62B67			ILLINOIS FED. AID PROJECT	

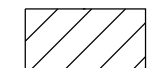


ELEVATION  
(Looking East)



ELEVATION  
(Looking West)

**LEGEND:**

 STRUCTURAL REPAIR OF CONCRETE  
(DEPTH EQUAL TO OR LESS THAN 5")

**BILL OF MATERIALS – PIER 6**

ITEM	UNIT	QUANTITY
STRUCTURAL REPAIR OF CONCRETE (DEPTH EQUAL TO OR LESS THAN 5")	SQ. FT.	32

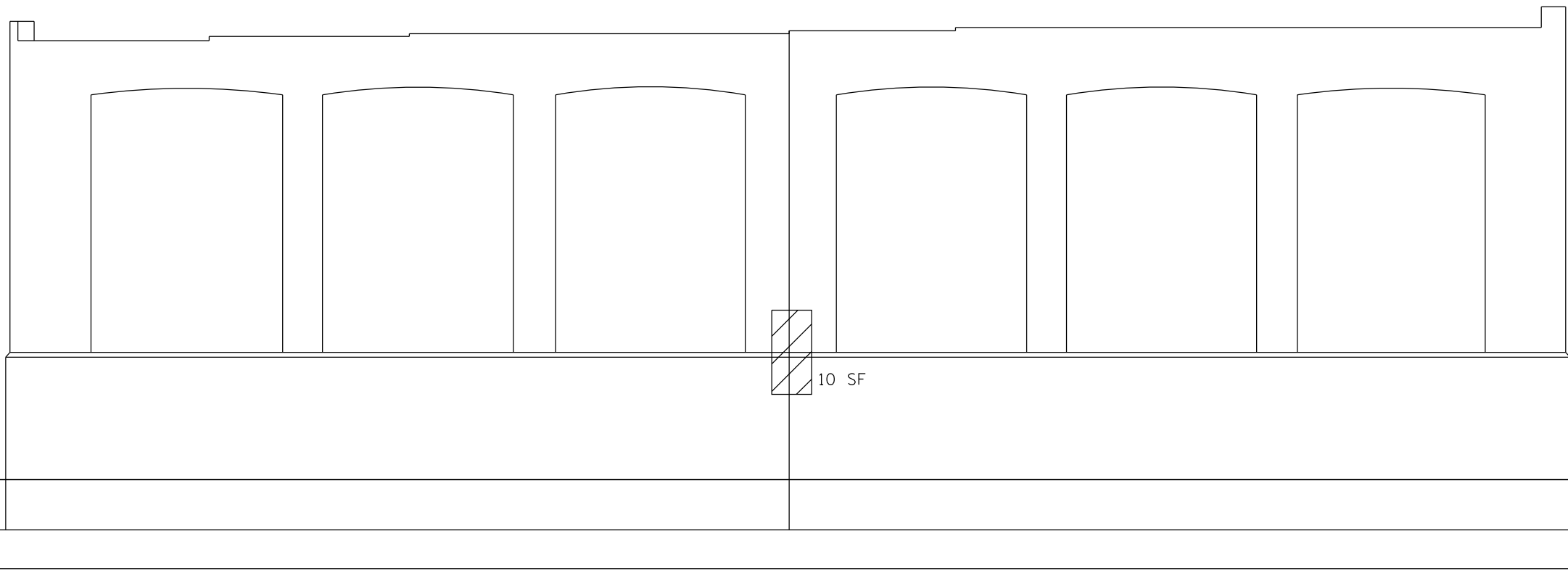
FILE NAME =	USER NAME = pyrzezowski	DESIGNED -	REVISED -
p:\11\084EBID\TEG\illinois.gov\PI\DOT\Documents\DOT Offices\District 1\Projects\DI04816\Design\DI04816-sht-plan.dgn		CHECKED -	REVISED -
Default	PLOT DATE = 10/22/2015	DATE -	REVISED -

**STATE OF ILLINOIS  
DEPARTMENT OF TRANSPORTATION**

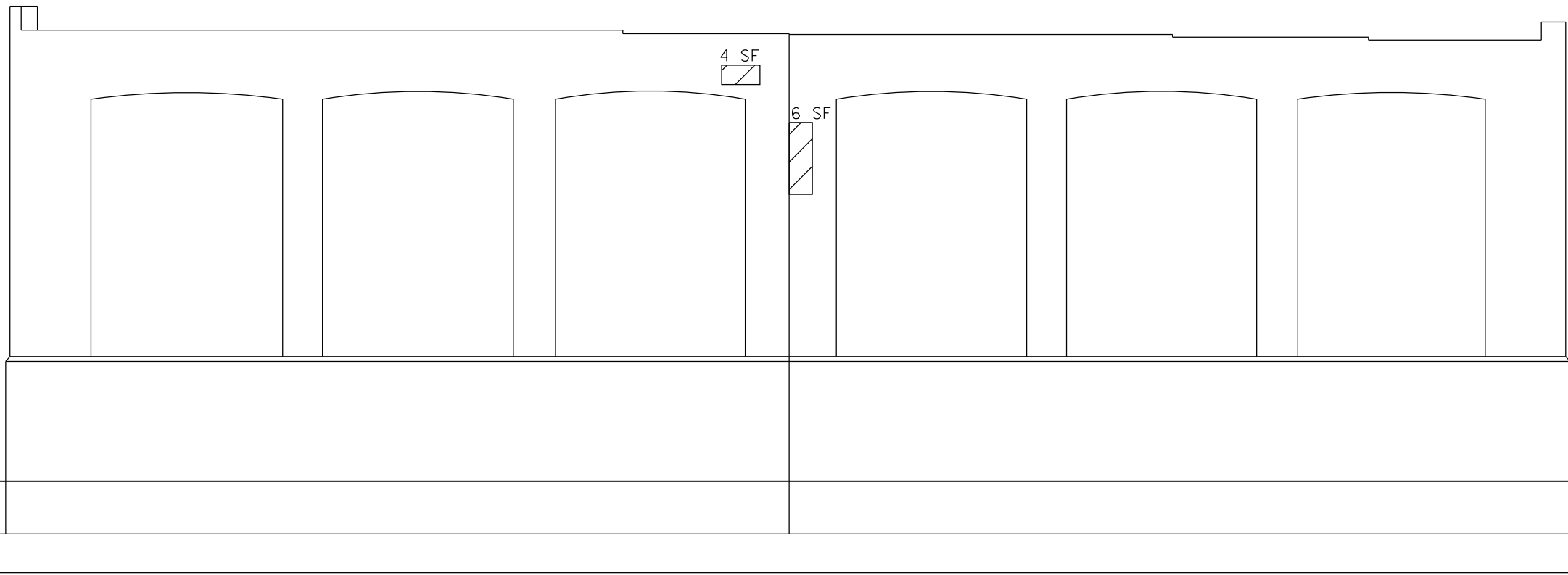
**PIER 6  
SN 016-1061**

SCALE: SHEET OF SHEETS STA. TO STA.

F.A.P. RTE.	SECTION	COUNTY	TOTAL SHEETS	SHEET NO.
383	(3030.1&.4)BR	COOK	23	20
CONTRACT NO. 62B67			ILLINOIS FED. AID PROJECT	

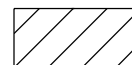


ELEVATION  
(Looking East)



ELEVATION  
(Looking West)

**LEGEND:**

 STRUCTURAL REPAIR OF CONCRETE  
(DEPTH EQUAL TO OR LESS THAN 5")

**BILL OF MATERIALS – PIER 7**

ITEM	UNIT	QUANTITY
STRUCTURAL REPAIR OF CONCRETE (DEPTH EQUAL TO OR LESS THAN 5")	SQ. FT.	20

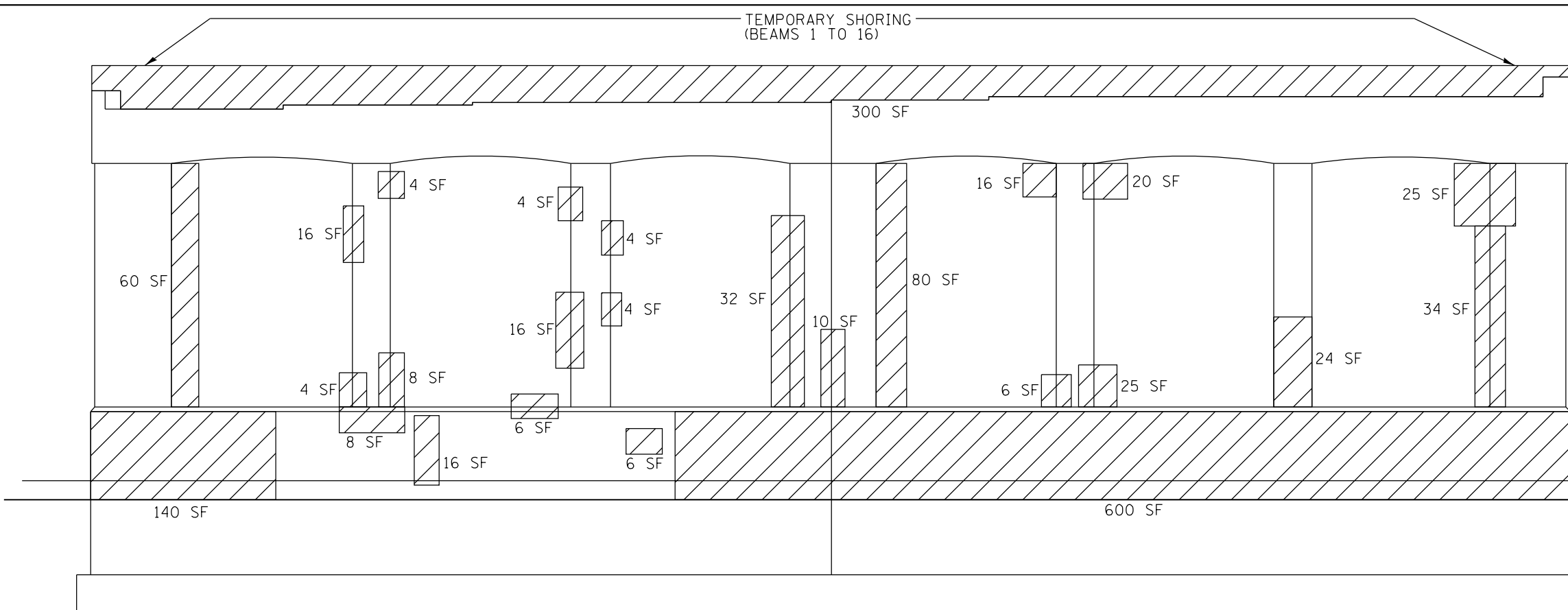
FILE NAME =	USER NAME = pyznowskirb	DESIGNED -	REVISED -
p:\11\084EBID\INTEG\illinois.gov\PIWIDOT\Documents\IDOT Offices\District 1\Projects\DI04816\Design\DI04816-sht-plan.dgn		CHECKED -	REVISED -
Default	PLOT DATE = 10/22/2015	DATE -	REVISED -

**STATE OF ILLINOIS  
DEPARTMENT OF TRANSPORTATION**

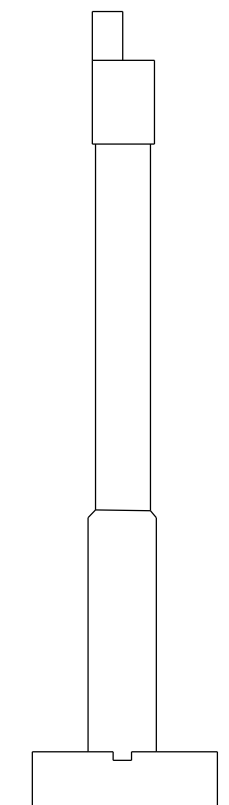
**PIER 7  
SN 016-1061**

SCALE: SHEET OF SHEETS STA. TO STA.

F.A.P. RTE.	SECTION	COUNTY	TOTAL SHEETS	SHEET NO.
383	(3030.1&.4)BR	COOK	23	21
CONTRACT NO. 62B67				
ILLINOIS FED. AID PROJECT				



ELEVATION  
(Looking East)



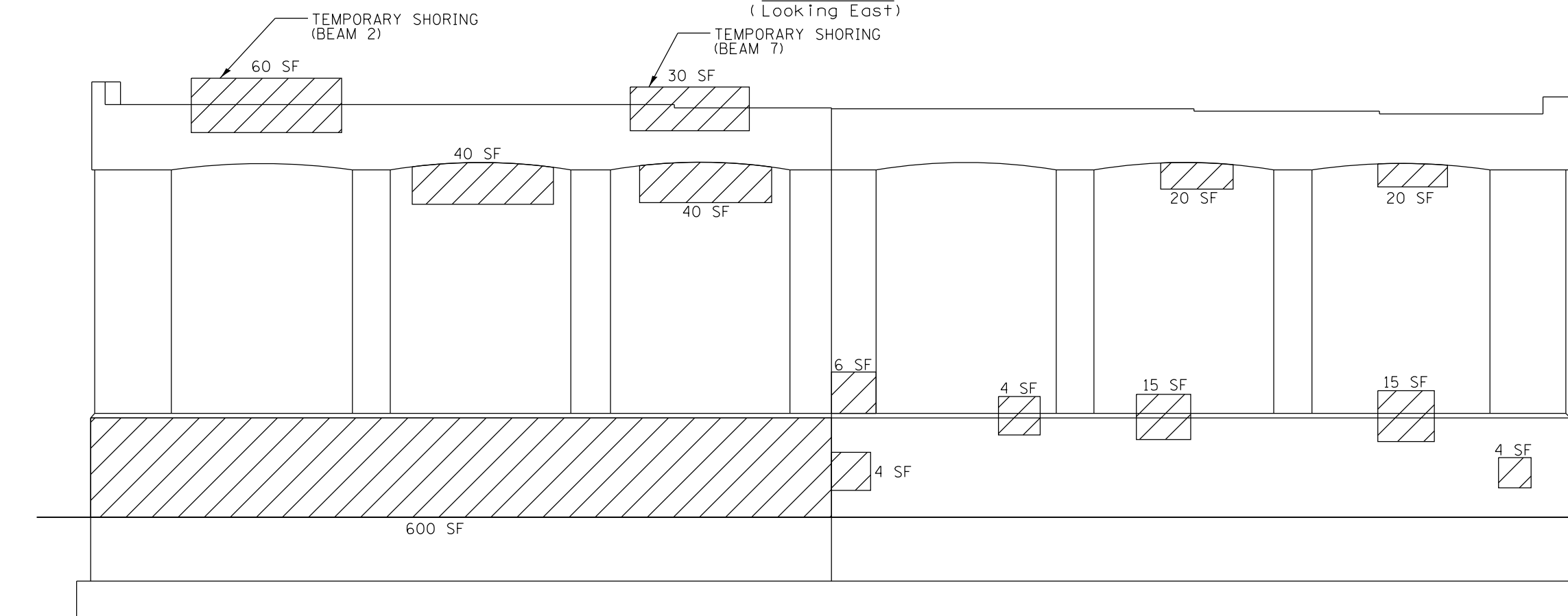
**LEGEND:**

STRUCTURAL REPAIR OF CONCRETE  
(DEPTH EQUAL TO OR LESS THAN 5")

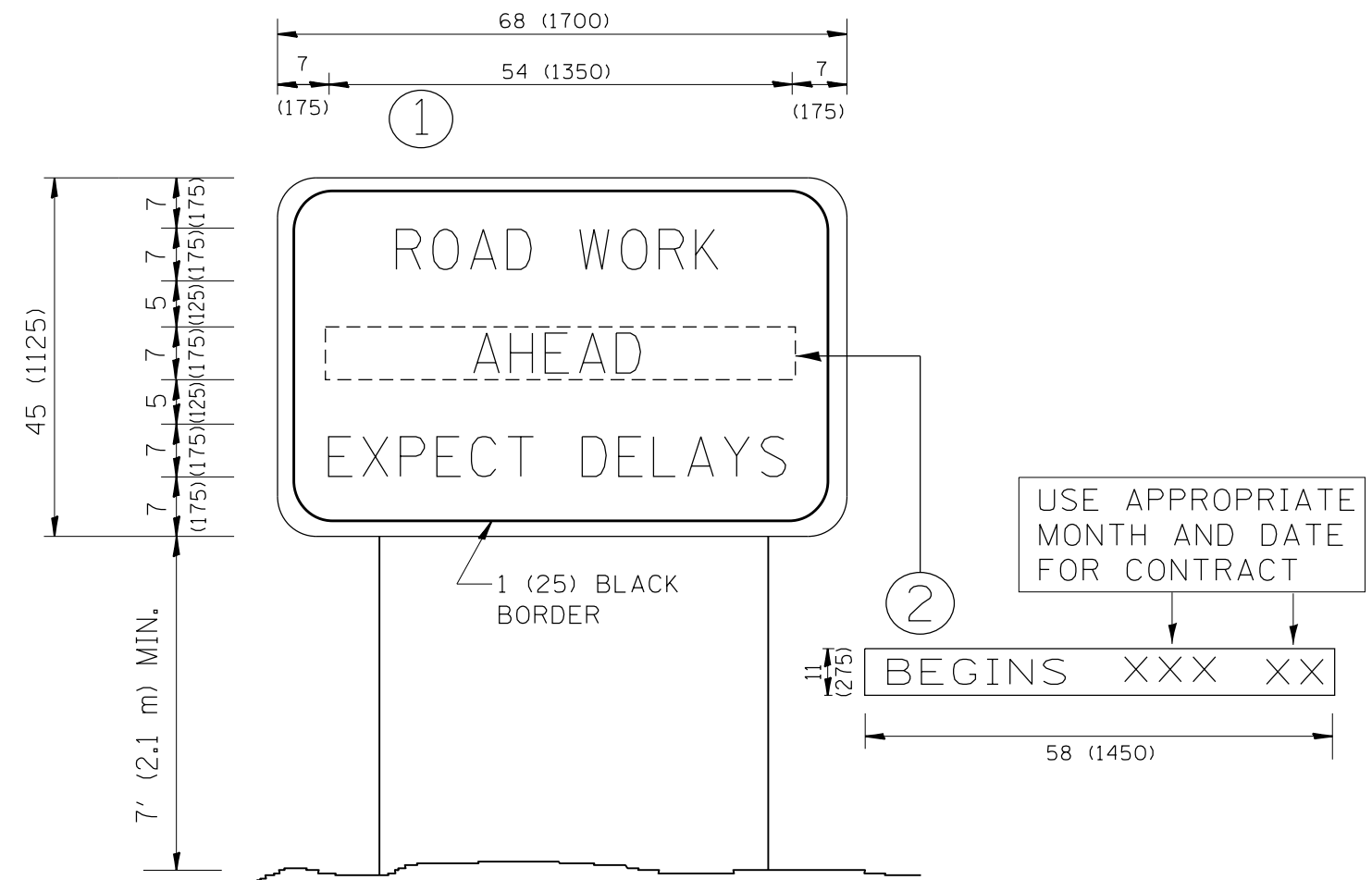
**BILL OF MATERIALS – WEST PIER**

ITEM	UNIT	QUANTITY
STRUCTURAL REPAIR OF CONCRETE (DEPTH EQUAL TO OR LESS THAN 5")	SQ. FT.	2406
TEMPORARY SHORING AND CRIBBING	EACH	18

**NOTE:**  
REMOVAL AND REATTACH EXISTING GUARDRAIL  
INCLUDED IN COST OF STRUCTURAL REPAIR  
OF CONCRETE (DEPTH EQUAL TO OR LESS THAN 5")



ELEVATION  
(Looking West)



**NOTES:**

1. USE BLACK LETTERING ON ORANGE BACKGROUND.
2. ERECT SIGNS IN ADVANCE OF THE LOCATION FOR THE "ROAD CONSTRUCTION AHEAD" SIGN AT LOCATIONS AS DIRECTED BY THE ENGINEER.
3. ERECT SIGN ① WITH INSTALLED PANEL ② ONE WEEK PRIOR TO THE START OF CONSTRUCTION.
4. REMOVE PANEL ② SOON AFTER THE START OF CONSTRUCTION.
5. SEE SPECIAL PROVISION FOR "TEMPORARY INFORMATION SIGNING" FOR ADDITIONAL INFORMATION.
6. ONE SIGN ASSEMBLY EQUALS 25.70 SQ. FT. (2.3 SQ. M.)
7. SHALL BE PAID FOR AS TEMPORARY INFORMATION SIGNING.

ALL DIMENSIONS ARE IN INCHES (MILLIMETERS) UNLESS OTHERWISE SHOWN.

FILE NAME =	USER NAME = pyznowskirb	DESIGNED -	REVISED - R. MIRS 09-15-97
p:\11\084EBIDINTEG.illinois.gov\PIWIDOT\Documents\IDOT Offices\District 1\Projects\DI04816\DRWING\Design\DI04816-sht-plan.dgn		CHECKED -	REVISED - R. MIRS 12-11-97
		PLOT SCALE = 100.0000' / 1in.	REVISED - T. RAMMACHER 02-02-99
		PLOT DATE = 10/22/2015	REVISED - C. JUCIUS 01-31-07

**STATE OF ILLINOIS  
DEPARTMENT OF TRANSPORTATION**

**ARTERIAL ROAD  
INFORMATION SIGN**

SCALE: NONE SHEET NO. 1 OF 1 SHEETS STA. TO STA.

F.A. RTE.	SECTION	COUNTY	TOTAL SHEETS	SHEET NO.
383	(3030.1&.4)BR	COOK	23	23
TC-22		CONTRACT NO. 62B67		
FED. ROAD DIST. NO. 1 ILLINOIS FED. AID PROJECT				