

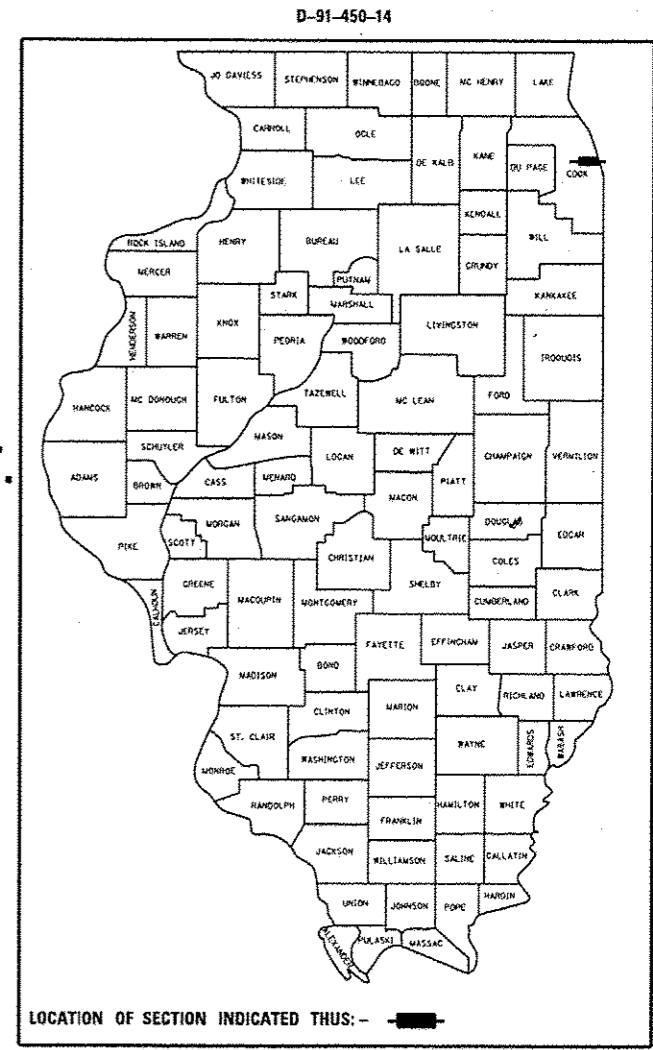
STATE OF ILLINOIS  
DEPARTMENT OF TRANSPORTATION  
DIVISION OF HIGHWAYS

F.A.J. RTE.	SECTION	COUNTY	TOTAL SHEETS	SHEET NO.
90/94/290	2014-051LS	COOK	15	1
ILLINOIS CONTRACT NO. 60Y67				

FOR INDEX OF SHEETS, SEE SHEET NO. 2

# PROPOSED HIGHWAY PLANS

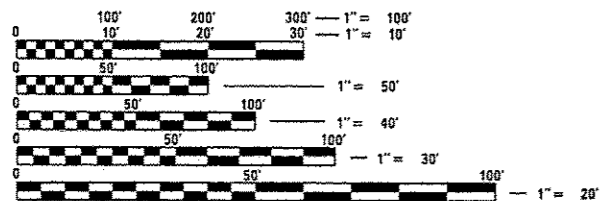
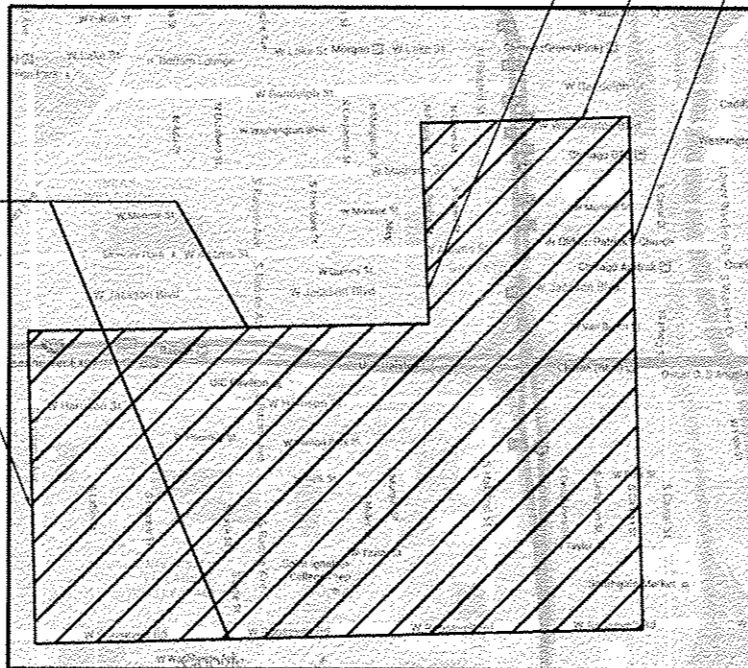
FAI 90 /94 /290 ROUTE (JANE BYRNE INTERCHANGE)  
 I-90/94: ROOSEVELT RD. TO WASHINGTON BLVD. & PEORIA ST. TO CLINTON ST.  
 I-290: ROOSEVELT RD. TO VAN BUREN ST. & ASHLAND AVE. TO CLINTON ST.  
 SECTION 2014-051LS  
 LANDSCAPING  
 COOK COUNTY  
 C-91-450-14



LIMITS ALONG I-90/94:  
ROOSEVELT RD. TO WASHINGTON BLVD. &  
PEORIA ST. TO CLINTON ST.

IMPROVEMENT LOCATED IN THE CITY OF CHICAGO

LIMITS ALONG I-290:  
ROOSEVELT RD. TO VAN BUREN ST. &  
ASHLAND AVE. TO CLINTON ST.



FULL SIZE PLANS HAVE BEEN PREPARED USING STANDARD ENGINEERING SCALES. REDUCED SIZED PLANS WILL NOT CONFORM TO STANDARD SCALE, IN MAKING MEASUREMENTS ON REDUCED PLANS, THE ABOVE SCALES MAY BE USED.

48 HOURS PRIOR TO START OF CONSTRUCTION, THE CONTRACTOR MUST TELEPHONE C.U.A.N. (CHICAGO UTILITY ALERT NETWORK) AT (312) 744-7000 FOR UNDERGROUND UTILITY LOCATIONS

PROJECT ENGINEER: MELISSA DEL ROSARIO (847) 705-4391  
 FABIOLA QUIROZ (847) 705-4596  
 PROJECT MANAGER: JAMES STUMPNER  
 CONTRACT NO. 60Y67

STATE OF ILLINOIS  
 DEPARTMENT OF TRANSPORTATION  
 DIVISION OF HIGHWAYS

SUBMITTED August 11, 2015  
 John F. ... DEPUTY DIRECTOR OF HIGHWAYS, REGION ENGINEER  
 Oct 2, 2015  
 ... ENGINEER OF DESIGN AND ENVIRONMENT  
 Oct 2, 2015  
 ... DIRECTOR OF HIGHWAYS, CHIEF ENGINEER

PRINTED BY THE AUTHORITY  
OF THE STATE OF ILLINOIS

**INDEX OF SHEETS**

SHEET NO.	DESCRIPTION
1	COVER SHEET
2	INDEX OF SHEETS, GENERAL NOTES, & STATE STANDARDS
3-4	SUMMARY OF QUANTITIES
5	SCHEDULE OF LANDSCAPE ITEMS
6	TREE DETAILS
7	WORK ORDER
8-9	CDOT - TREE PLANTING LOCATIONS
10	UIC - TREE PLANTING LOCATIONS
11-12	CDOT - TREE WATERING & TREE CARE LOCATIONS
13	UIC - TREE WATERING & TREE CARE LOCATIONS
14-15	DISTRICT DETAILS

**HIGHWAY STANDARDS**

701501-06	URBAN LANE CLOSURE, 2L, 2W, UNDIVIDED
701601-09	URBAN LANE CLOSURE, MULTILANE, 1W OR 2W WITH NON TRAVERSABLE MEDIAN
701701-09	URBAN LANE CLOSURE, MULTILANE INTERSECTION
701801-05	SIDEWALK, CORNER OR CROSSWALK CLOSURE
701901-04	TRAFFIC CONTROL DEVICES

**GENERAL NOTES**

PRIOR TO THE START OF CONSTRUCTION, THE CONTRACTOR MUST SUBMIT A PROPOSED CONSTRUCTION SCHEDULE IN A FORMAT APPROVED BY THE ENGINEER. NO WORK WILL BE PERMITTED TO PROCEED UNTIL THE PROPOSED SCHEDULE IS REVIEWED AND APPROVED BY THE ENGINEER.

IN AREAS WHERE MULTIPLE LOCATIONS ARE PROPOSED TO BE CONSTRUCTED, THE CONTRACTOR WILL BE REQUIRED TO STAGE WORK SO AS NOT TO ADVERSELY AFFECT THE FLOW OF PEDESTRIAN VEHICULAR TRAFFIC WITHIN THE GENERAL AREA. THE PROPOSED CONSTRUCTION SCHEDULE SHOULD REFLECT A PROGRESSION OF WORK THAT WILL MAINTAIN TRAFFIC TO THE SATISFACTION OF THE ENGINEER.

THE CITY RESERVES THE RIGHT TO ORDER, IN WRITING, CHANGES IN THE WORK OR THE CONTRACT TIME. THESE CHANGES MAY CONSIST OF ADDITIONS, DELETIONS OR OTHER REVISIONS, AT THE DISCRETION OF THE CITY.

WHEN UNFORESEEN CIRCUMSTANCES IMPACT THE CONTRACTOR'S APPROVED CONSTRUCTION SCHEDULE, IT MAY BE NECESSARY TO ADJUST OR REVISE THE SCHEDULE IN ORDER TO MAINTAIN PROGRESS AND PROVIDE FOR PEDESTRIAN AND VEHICULAR SAFETY. THE CONTRACTOR WILL COOPERATE FULLY WITH THE CITY IN THIS REGARD.

LANE CLOSURES, WORK ZONE RESTRICTIONS, REVISED WORK DAY HOURS AND WEEKEND OR HOLIDAY WORK SCHEDULES ARE SUBJECT TO THE APPROVAL OF THE COMMISSIONER. THE CONTRACTOR MUST RECEIVE WRITTEN AUTHORIZATION, EITHER BY PERMIT OR NOTIFICATION BY THE ENGINEER, BEFORE PROCEEDING WITH WORK UNDER THESE CIRCUMSTANCES.

BEFORE STARTING ANY EXCAVATION ON CDOT R.O.W., THE CONTRACTOR SHALL CALL C.U.A.N. (CHICAGO UTILITY ALERT NETWORK) AT 312-744-7000 FOR FIELD LOCATIONS OF BURIED ELECTRICAL, TELEPHONE, AND GAS FACILITIES. (48 HOUR NOTIFICATION IS REQUIRED).

BEFORE STARTING ANY EXCAVATION ON THE UIC R.O.W., THE CONTRACTOR SHALL CALL 312-996-2883 FOR FIELD LOCATIONS OF BURIED ELECTRICAL FACILITIES, 312-996-2816 FOR FIELD LOCATIONS OF BURIED IRRIGATION, AND 312-996-0746 FOR FIELD LOCATIONS OF BURIED FIBER OPTIC FACILITIES. THE CONTRACTOR SHALL CALL 312-413-5800 BEFORE STARTING ANY WORK ON UIC PARKING LOTS. SEVEN (7) DAY NOTIFICATION IS REQUIRED.

THE CONTRACTOR SHALL COORDINATE ACTIVITIES WITH UTILITY COMPANIES, THE CITY OF CHICAGO, AND THE UIC CAMPUS.

THE CONTRACTOR WILL NOT BE ALLOWED TO SET UP A YARD OR FIELD OFFICE ON STATE PROPERTY WITHOUT WRITTEN PERMISSION FROM I.D.O.T. OR THE CITY OF CHICAGO.

PAY ITEMS IN THE SUMMARY OF QUANTITIES HAVE BEEN ESTIMATED, IF, IN THE ENGINEER'S OPINION, THE WORK IS NOT REQUIRED, THE ITEM WILL BE DEDUCTED FROM THE CONTRACT AND NO ADDITIONAL COMPENSATION TO THE CONTRACTOR WILL BE ALLOWED.

ANY WORK WITHIN A LANDSCAPED MEDIAN REQUIRES A LANE CLOSURE AND USE OF AN ARROW BOARD PER IDOT SPECIFICATIONS.

CONTRACTOR MUST ACQUIRE PERMITS FROM CHICAGO DEPARTMENT OF TRANSPORTATION (CDOT), CHICAGO BUREAU OF FORESTRY (BOF), AND CHICAGO DEPARTMENT OF WATER MANAGEMENT. THE PERMITS ARE DETAILED IN CDOT BOOK 3, PAGE DS-16, SUBMITTALS ITEM 7.

THE CONTRACTOR SHALL COORDINATE ALL ACTIVITIES WITH IDOT CONTRACT 60Y66 (LANDSCAPE).

THE CONTRACTOR SHALL ORDER PLANT MATERIAL AND SUBMIT COMPLETED PLANT INSPECTION SHEETS TO IDOT BY JANUARY 31, 2016 TO ASSURE PLANT AVAILABILITY FOR THE SPRING PLANTING SEASON.

CONTRACTOR SHALL PERFORM DUE DILIGENCE IN LOCATING SPECIFIED PLANT MATERIAL.

NO SUBSTITUTIONS OF PLANT MATERIAL, QUANTITIES OR SIZES SHALL BE ALLOWED UNLESS APPROVED BY THE ENGINEER.

EXCAVATION BY AUGER OR OTHER MECHANICAL MEANS IS NOT ACCEPTABLE. HAND DIGGING OF ALL PLANT HOLES IS REQUIRED.

THE CONTRACTOR SHALL USE CARE IN GRADING OR EXCAVATING NEAR ANY AND ALL EXISTING ITEMS THAT WILL NOT BE REMOVED. ANY DAMAGE DONE TO EXISTING ITEMS BY THE CONTRACTOR SHALL BE REPAIRED AT THE CONTRACTOR'S OWN EXPENSE TO THE SATISFACTION OF THE ENGINEER.

WHENEVER, DURING CONSTRUCTION OPERATIONS, ANY LOOSE MATERIAL IS DEPOSITED IN THE FLOW LINE OF DRAINAGE STRUCTURES SUCH THAT THE NATURAL FLOW OF WATER IS OBSTRUCTED, IT SHALL BE REMOVED AT THE CLOSE OF EACH WORKING DAY. AT THE CONCLUSION OF CONSTRUCTION OPERATIONS, ALL UTILITY STRUCTURES SHALL BE FREE FROM DIRT AND DEBRIS. THE WORK SPECIFIED ABOVE WILL NOT BE PAID FOR SEPARATELY BUT SHALL BE INCLUDED IN THE COST FOR CATCH BASINS AND MANHOLES TO BE ADJUSTED IN THIS CONTRACT.

ANY EXISTING STORM SEWER DAMAGED BY THE CONTRACTOR DURING CONSTRUCTION SHALL BE REPLACED BY THE CONTRACTOR AT NO COST TO THE CITY.

WATERING METHOD WILL BE APPROVED BY THE ENGINEER PRIOR TO WATERING.

**COMMITMENT**

NO WORK SHALL BE DONE PAST FRIDAY, MAY 6TH BY THE UIC FORUM AND THE UIC PAVILLION DUE TO SPECIAL SCHOOL EVENTS. ALL INSTALLATION AND RESTORATION WORK WITHIN THESE AREAS SHALL BE COMPLETED BY FRIDAY, MAY 6TH.

URBAN

URBAN

SUMMARY OF QUANTITIES				CONSTRUCTION TYPE CODE					
CODE NO	ITEM	UNIT	TOTAL QUANTITIES	100%					
				STATE					
				0031					
B2002410	TREE, MAGNOLIA LOEBNERI MERRIL (MERRIL LOEBNER MAGNOLIA), 8' HEIGHT, CLUMP FORM, BALLED AND BURLAPPED	EACH	2	2					
B2004586	TREE, MALUS RED PEACOCK (RED PEACOCK CRABAPPLE), 7' HEIGHT, CLUMP FORM, BALLED AND BURLAPPED	EACH	8	8					
C2012774	SHRUB, VIBURNUM PRUNIFOLIUM (BLACKHAW VIBURNUM), 7' HEIGHT, BALLED AND BURLAPPED	EACH	42	42					
D2001676	EVERGREEN, JUNIPERUS VIRGINIANA CANAERTII (CANAERTI RED CEDAR), 8' HEIGHT, BALLED AND BURLAPPED	EACH	2	2					
D2003674	EVERGREEN, PINUS SYLVESTRIS (SCOTCH PINE), 7' HEIGHT, BALLED AND BURLAPPED	EACH	2	2					
25200200	SUPPLEMENTAL WATERING	UNIT	130	130					
67100100	MOBILIZATION	LSUM	1	1					
A2000118	TREE, ACER X FREEMANII AUTUMN BLAZE (AUTUMN BLAZE FREEMAN MAPLE), 3" CALIPER, BALLED AND BURLAPPED	EACH	1	1					
A2002824	TREE, CATALPA SPECIOSA (NORTHERN CATALPA), 3" CALIPER, BALLED AND BURLAPPED	EACH	4	4					

SUMMARY OF QUANTITIES				CONSTRUCTION TYPE CODE					
CODE NO	ITEM	UNIT	TOTAL QUANTITIES	100%					
				STATE					
				0031					
A2002920	TREE, CELTIS OCCIDENTALIS (COMMON HACKBERRY), 2-1/2" CALIPER, BALLED AND BURLAPPED	EACH	7	7					
A2004514	TREE, GINKGO BILOBA AUTUMN GOLD (AUTUMN GOLD GINKGO), 2-1/2" CALIPER BALLED AND BURLAPPED	EACH	2	2					
A2004720	TREE, GLEDITSIA TRIACANTHOS INERMIS SHADEMASTER (SHADEMASTER THORNLESS COMMON HONEYLOCUST), 2-1/2" CALIPER, BALLED AND BURLAPPED	EACH	22	22					
A2005020	TREE, GYMNOCLADUS DIOICUS (KENTUCKY COFFEETREE), 2-1/2" CALIPER, BALLED AND BURLAPPED	EACH	38	38					
A2006420	TREE, QUERCUS ALBA (WHITE OAK), 2-1/2" CALIPER, BALLED AND BURLAPPED	EACH	1	1					
A2006520	TREE, QUERCUS BICOLOR (SWAMP WHITE OAK), 2-1/2" CALIPER, BALLED AND BURLAPPED	EACH	21	21					
A2006820	TREE, QUERCUS MUEHLENBERGII (CHINKAPIN OAK), 2-1/2" CALIPER, BALLED AND BURLAPPED	EACH	3	3					
A2007251	TREE, ROBINIA PSEUDOACACIA CHICAGO BLUE, (CHICAGO BLUE BLACK LOCUST), 2-1/2" CALIPER, BALLED AND BURLAPPED	EACH	3	3					

FILE NAME: ... USER NAME: ... DESIGNED: ... REVISION: ...  
 PLOT SCALE: 1/8" = 1'-0" PLOT DATE: 8/6/2008  
 CHECKED: ... DATE: ...

STATE OF ILLINOIS  
DEPARTMENT OF TRANSPORTATION

SUMMARY OF QUANTITIES

F.A.I. RTE. 90/94/290 SECTION 2014-0515 COUNTY COOK TOTAL SHEETS 15 SHEET NO. 3 CONTRACT NO. 60Y67  
 FED. ROAD DIST. NO. 1 (ILLINOIS) FED. AID PROJECT

URBAN

URBAN

SUMMARY OF QUANTITIES			TOTAL QUANTITIES	CONSTRUCTION TYPE CODE				
CODE NO	ITEM	UNIT		100% STATE				
A2007620	TREE, TAXODIUM DISTICHUM (COMMON BALD CYPRESS), 2-1/2" CALIPER, BALLED AND BURLAPPED	EACH	3	3				
A2018620	TREE, ULMUS CARPINIFOLIA MORTON, (ACCOLADE ELM HYBRID), 3" CALIPER, BALLED AND BURLAPPED	EACH	8	8				
A2018730	TREE, ULMUS CARPINIFOLIA NEW HORIZON (NEW HORIZON SMOOTHLEAF ELM), 3" CALIPER, BALLED AND BURLAPPED	EACH	12	12				
B2000120	TREE, ACER CAMPESTRE (HEDGE MAPLE), 2-1/2" CALIPER, TREE FORM, BALLED AND BURLAPPED	EACH	1	1				
B2000767	TREE, AMELANCHIER X GRANDIFLORA AUTUMN BRILLIANCE (AUTUMN BRILLIANCE SERVICE BERRY), 8' HEIGHT, CLUMP FORM, BALLED AND BURLAPPED	EACH	18	18				
B2001468	TREE, CORNUS MAS 'GOLDEN GLORY' (GOLDEN GLORY CORNELIAN CHERRY DOGWOOD), 6' HEIGHT, CLUMP FORM, BALLED AND BURLAPPED	EACH	16	16				
B2001668	TREE, CRATAEGUS CRUGALLI INERMIS (THORN LESS COCKSPUR HAWTHORN), 7' HEIGHT, SHRUB FORM, BALLED AND BURLAPPED	EACH	23	23				

SUMMARY OF QUANTITIES			TOTAL QUANTITIES	CONSTRUCTION TYPE CODE				
CODE NO	ITEM	UNIT		100% STATE				
B2006220	TREE, SYRINGA RETICULATA (JAPANESE TREE LILAC), 2-1/2" CALIPER, TREE FORM, BALLED AND BURLAPPED	EACH	8	8				
B2006270	TREE, SYRINGA RETICULATA (JAPANESE TREE LILAC), 8' HEIGHT, CLUMP FORM, BALLED AND BURLAPPED	EACH	5	5				
C2003260	SHRUB, HAMAMELIS VERNALIS (VERNAL WITCH HAZEL), 5' HEIGHT, BALLED AND BURLAPPED	EACH	7	7				
D2003072	EVERGREEN, PINUS SYLVESTRIS (SCOTCH PINE), 6' HEIGHT, BALLED AND BURLAPPED	EACH	2	2				
K0026700	TREE CARE	EACH	90	90				
X0322998	TREE PLANTING IN URBAN STRUCTURES	EACH	98	98				
X0327800	TREE PLANTING IN CITY PARKWAYS	EACH	93	93				

# 60Y67 - CALENDAR OF LANDSCAPE CONSTRUCTION AND ESTABLISHMENT WORK

ITEM	2015		2016										2017					
	November	December	January	February	March	April	May	June	July	August	September	October	November	December	January	February	March	April

**PLANT MATERIAL INSPECTIONS**

Submit completed plant inspection forms to IDOT by Jan 31 for spring planting season & Sept 30 for fall planting season	Submit completed plant inspection sheets to IDOT for SPRING plantings	IDOT inspects SPRING plant material at various nurseries		Submit completed plant inspection sheets to IDOT for FALL 2016 replacement plantings	Submit completed plant inspection sheets to IDOT for SPRING 2017 plantings		
---	---	--	--	--	--	--	--

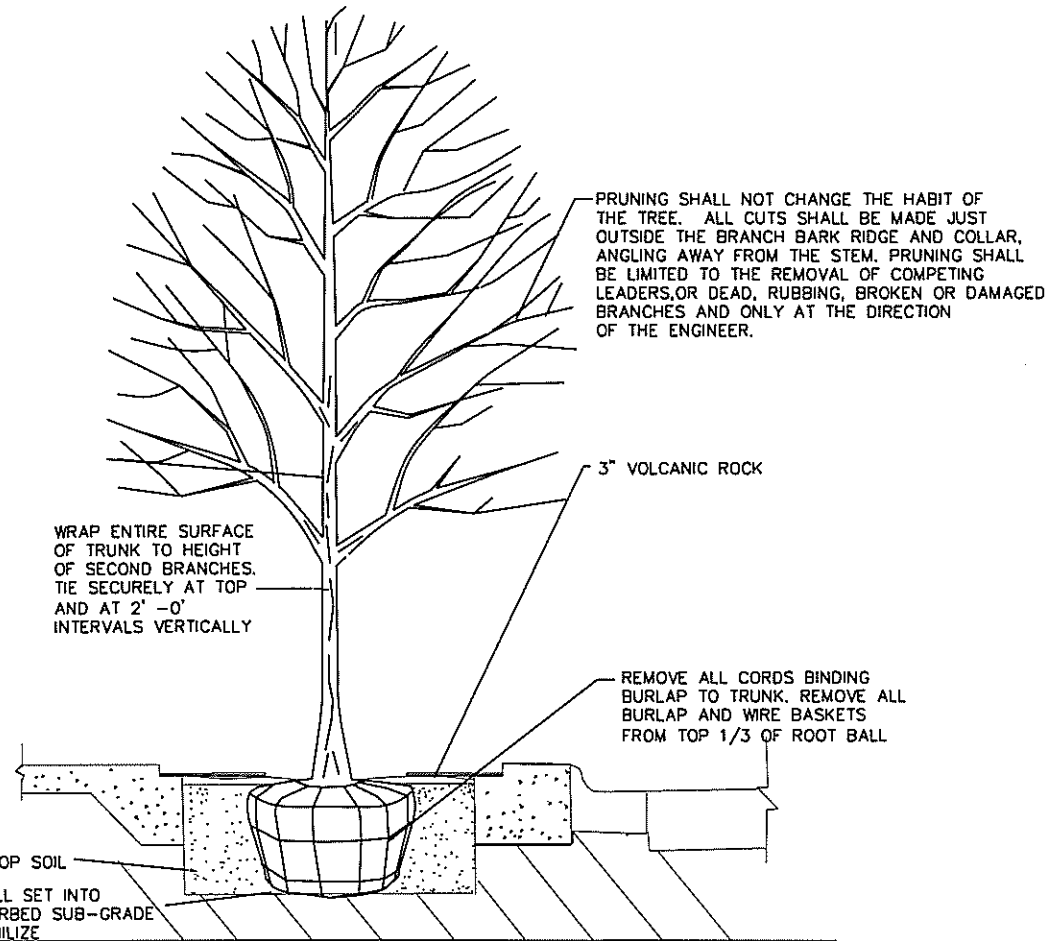
**TREE PLANTING**

Layout shall be performed by the Resident Engineer, the Contractor, and a representative from either CDOT or UIC  Spring plantings of balled and burlapped: March 15 - May 30  Fall (ONLY) plantings of balled and burlapped: Nov 1 - Nov 30  Period of Establishment Plant Care: Weed & Water (Included in cost of tree installation)			layout  spring planting		Period of Establishment Inspection by IDOT		fall (ONLY) replacement plantings		spring planting - replacements & clean-up work (see checklist)
			4	4	4	4	4	4	4

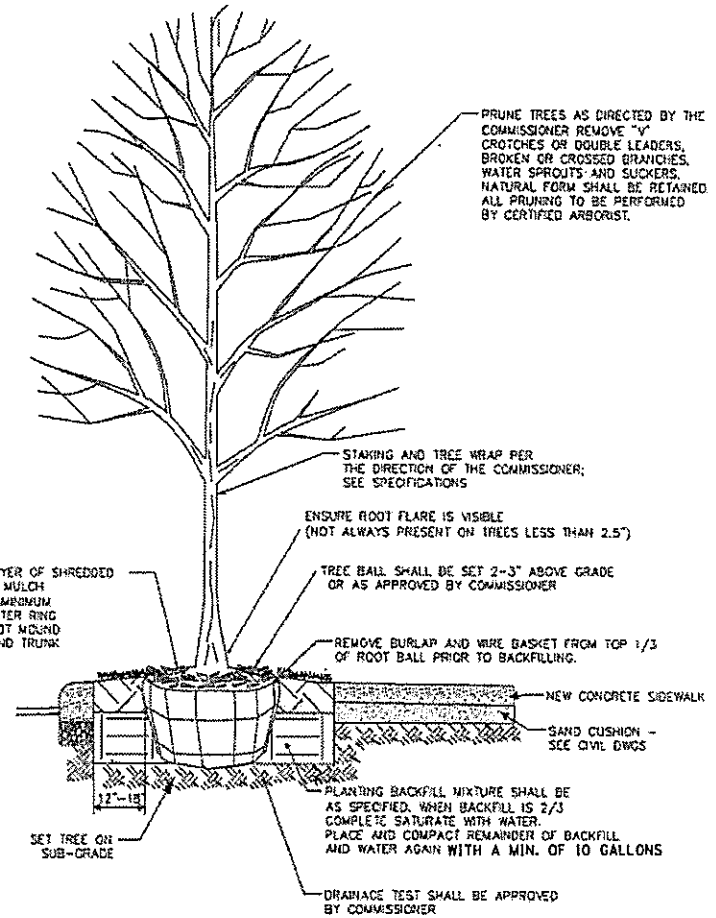
**SUPPLEMENTAL TREE CARE**

Supplemental Watering for Trees Installed in 2015 (See Special Provision)			4	4	4	4	4	4	4		
Tree Care for Trees Installed in 2015 (See Special Provision)											tree care: see special provision

TREE PIT OPENING (VARIES)



TREE PIT - TREE PLANTING DETAIL  
N.T.S.



① PARKWAY TREE PLANTING DETAIL

NTS

FILE NAME =	USER NAME = del-cas-ions	DESIGNED -	REVISED -	<b>STATE OF ILLINOIS DEPARTMENT OF TRANSPORTATION</b>	<b>TREE PLANTING DETAILS</b>	F.A.I. RTE.	SECTION	COUNTY	TOTAL SHEETS	SHEET NO.	
Default	Documents\DOT Offices\District 1\Projects\01078\Drawings\Structures\0107814-ght-Landscape	DRAWN -	REVISED -			90/94/290	2014-051S	COOK	15	6	
	PLOT SCALE = 1/8" = 1' / 1"	CHECKED -	REVISED -			CONTRACT NO. 60Y67					
	PLOT DATE = 8/8/2015	DATE -	REVISED -			ILLINOIS FED. AID PROJECT					



Illinois Department of Transportation

TREE PLANTING AND ESTABLISHMENT  
WORK ORDER  
CONTRACT 60Y67

Work Order Number:	Date Work Order Issued:		
Location:		CDOT	
		UIC	

THIS WORK ORDER IS A SAMPLE FORM ONLY.

WORK ORDER SUMMARY

PAY CODE	PAY ITEM	QUANTITIES AND UNITS	(X0322998) TREE PLANTING IN URBAN STRUCTURES - EACH

SPECIAL INSTRUCTIONS

AUTHORIZATION OF WORK ORDER

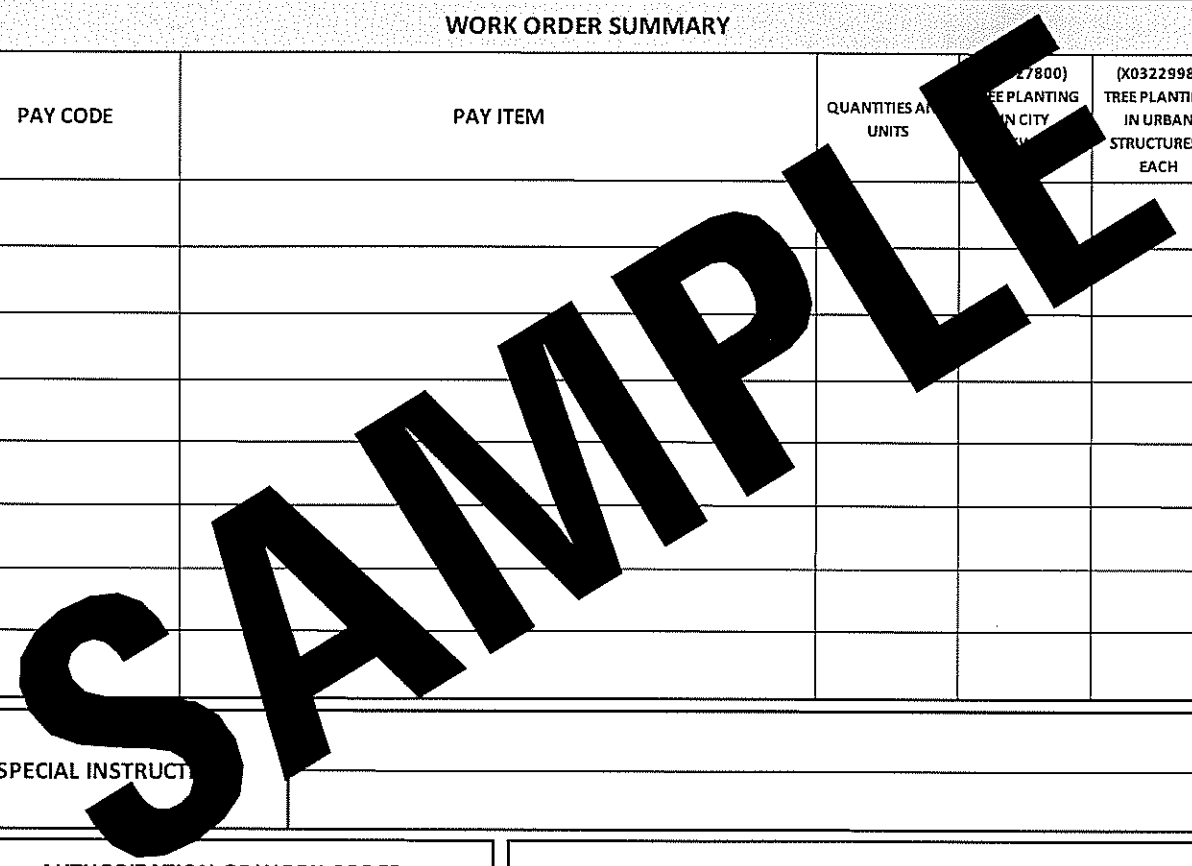
AGREEMENT TO WORK

IDOT Resident Engineer/Technician Signature _____ Date _____	Contractor Name (Printed) _____
CDOT/UIC Representative Signature _____ Date _____	Contractor Signature _____ Date _____

**CERTIFICATION OF COMPLETED WORK**  
I certify that the work order has been completed in conformance with contract requirements.

INSPECTION AND ACCEPTANCE OF COMPLETED WORK

Contractor Signature _____ Date _____	IDOT Resident Engineer/Technician Signature _____ Date _____
---------------------------------------	--



## 60Y67 (CDOT - TREE PLANTING LOCATIONS)

ADDRESS NUMBER	DIRECTION	STREET	TYPE			SIZE	SCIENTIFIC NAME	COMMON NAME	QTY
			OPEN PIT	PARKWAY	MEDIAN				
805	W	ADAMS	1			2.5"	QUERCUS BICOLOR	SWAMP WHITE OAK	1
1229	W	ARTHINGTON		1		2.5"	GYMNOCLADUS DIOICUS	KENTUCKY COFFEE TREE	1
720	S	ASHLAND	1			3"	ULMUS X 'NEW HORIZON'	NEW HORIZON ELM	1
752	S	ASHLAND	1			2.5"	GYMNOCLADUS DIOICUS	KENTUCKY COFFEE TREE	1
859	S	ASHLAND	1			2.5"	GLEDITSIA TRIACANTHOS INERMIS 'SHADEMASTER'	SHADEMASTER HONEYLOCUST	1
901	S	ASHLAND	1			3"	ULMUS X 'NEW HORIZON'	NEW HORIZON ELM	1
903	S	ASHLAND	1			2.5"	GYMNOCLADUS DIOICUS	KENTUCKY COFFEE TREE	1
904	S	ASHLAND	1			2.5"	GLEDITSIA TRIACANTHOS INERMIS 'SHADEMASTER'	SHADEMASTER HONEYLOCUST	1
957	S	ASHLAND	1			3"	ULMUS X 'NEW HORIZON'	NEW HORIZON ELM	1
1004	S	ASHLAND	1			2.5"	GYMNOCLADUS DIOICUS	KENTUCKY COFFEE TREE	1
1100	S	ASHLAND	1			2.5"	GLEDITSIA TRIACANTHOS INERMIS 'SHADEMASTER'	SHADEMASTER HONEYLOCUST	1
1124	S	ASHLAND	1			3"	ULMUS X 'NEW HORIZON'	NEW HORIZON ELM	1
1210	W	CABRINI	1			2.5"	GYMNOCLADUS DIOICUS	KENTUCKY COFFEE TREE	1
918	S	CARPENTER	1			2.5"	QUERCUS BICOLOR	SWAMP WHITE OAK	1
153	S	CLINTON		2		2.5"	GYMNOCLADUS DIOICUS	KENTUCKY COFFEE TREE	2
1132	S	CLINTON	1			2.5"	SYRINGA RETICULATA	JAPANESE TREE LILAC	1
403	S	DESPLAINES	1			2.5"	GLEDITSIA TRIACANTHOS INERMIS 'SHADEMASTER'	SHADEMASTER HONEYLOCUST	1
421	S	DESPLAINES	1			2.5"	GLEDITSIA TRIACANTHOS INERMIS 'SHADEMASTER'	SHADEMASTER HONEYLOCUST	1
611	S	DESPLAINES	3			2.5"	GYMNOCLADUS DIOICUS	KENTUCKY COFFEE TREE	3
831	S	DESPLAINES	2			2.5"	GYMNOCLADUS DIOICUS	KENTUCKY COFFEE TREE	2
900	S	DESPLAINES	1			2.5"	GYMNOCLADUS DIOICUS	KENTUCKY COFFEE TREE	1
1007	S	DESPLAINES	2			2.5"	GYMNOCLADUS DIOICUS	KENTUCKY COFFEE TREE	2
1107	S	DESPLAINES	1			2.5"	GYMNOCLADUS DIOICUS	KENTUCKY COFFEE TREE	1
1157	S	DESPLAINES	1			2.5"	GLEDITSIA TRIACANTHOS INERMIS 'SHADEMASTER'	SHADEMASTER HONEYLOCUST	1
330	S	GREEN	1			2.5"	GYMNOCLADUS DIOICUS	KENTUCKY COFFEE TREE	1
333	S	GREEN	2			2.5"	GLEDITSIA TRIACANTHOS INERMIS 'SHADEMASTER'	SHADEMASTER HONEYLOCUST	2
1256	W	GRENSHAW		1		3"	CATALPA SPECIOSA	CATALPA	1
1303	W	GRENSHAW		1		3"	CATALPA SPECIOSA	CATALPA	1
1351	W	GRENSHAW		2		3"	CATALPA SPECIOSA	CATALPA	2
956	W	HARRISON			1	2.5"	CELTIS OCCIDENTALIS	HACKBERRY	1
1340	W	HARRISON	1			2.5"	GINKGO BILOBA 'AUTUMN GOLD'	AUTUMN GOLD GINKGO	1



ADDRESS NUMBER	DIRECTION	STREET	TYPE			SIZE	SCIENTIFIC NAME	COMMON NAME	QTY
			OPEN PIT	PARKWAY	MEDIAN				
833	W	JACKSON	1			2.5"	GYMNOCLADUS DIOICUS	KENTUCKY COFFEE TREE	1
730	S	JEFFERSON	1			3"	ULMUS X 'NEW HORIZON'	NEW HORIZON ELM	1
1120	S	JEFFERSON	1			2.5"	GLEDITSIA TRIACANTHOS INERMIS 'SHADEMASTER'	SHADEMASTER HONEYLOCUST	1
1123	S	JEFFERSON	2			2.5"	QUERCUS BICOLOR	SWAMP WHITE OAK	2
720	S	LAFLIN	1			2.5"	QUERCUS BICOLOR	SWAMP WHITE OAK	1
812	S	LAFLIN	1			2.5"	GINKGO BILOBA 'AUTUMN GOLD'	AUTUMN GOLD GINKGO	1
1015	S	LAFLIN	1			3"	ULMUS X 'NEW HORIZON'	NEW HORIZON ELM	1
1021	S	LAFLIN	1			3"	ULMUS X 'NEW HORIZON'	NEW HORIZON ELM	1
1059	W	LEXINGTON	3			2.5"	QUERCUS BICOLOR	SWAMP WHITE OAK	3
623	W	MADISON	1			2.5"	GLEDITSIA TRIACANTHOS INERMIS 'SHADEMASTER'	SHADEMASTER HONEYLOCUST	1
629	W	MADISON	1			2.5"	GYMNOCLADUS DIOICUS	KENTUCKY COFFEE TREE	1
630	W	MADISON	1			2.5"	GYMNOCLADUS DIOICUS	KENTUCKY COFFEE TREE	1
803	S	MILLER	1			2.5"	QUERCUS BICOLOR	SWAMP WHITE OAK	1
410	S	MORGAN	3			2.5"	GYMNOCLADUS DIOICUS	KENTUCKY COFFEE TREE	3
157	S	PEORIA	1			2.5"	QUERCUS BICOLOR	SWAMP WHITE OAK	1
331	S	PEORIA	1			2.5"	GYMNOCLADUS DIOICUS	KENTUCKY COFFEE TREE	1
565	W	QUINCY	2			2.5"	GLEDITSIA TRIACANTHOS INERMIS 'SHADEMASTER'	SHADEMASTER HONEYLOCUST	2
621	W	ROOSEVELT	1			3"	ULMUS X 'NEW HORIZON'	NEW HORIZON ELM	1
1080	W	ROOSEVELT	3			2.5"	GLEDITSIA TRIACANTHOS INERMIS 'SHADEMASTER'	SHADEMASTER HONEYLOCUST	3
1105	W	ROOSEVELT	1			2.5"	GYMNOCLADUS DIOICUS	KENTUCKY COFFEE TREE	1
1422	W	ROOSEVELT	1			2.5"	GYMNOCLADUS DIOICUS	KENTUCKY COFFEE TREE	1
829	W	TAYLOR			2	3"	ULMUS X 'NEW HORIZON'	NEW HORIZON ELM	2
829	W	TAYLOR			3	2.5"	CELTIS OCCIDENTALIS	HACKBERRY	3
855	W	TAYLOR			1	2.5"	QUERCUS BICOLOR	SWAMP WHITE OAK	1
859	W	TAYLOR			1	2.5"	QUERCUS BICOLOR	SWAMP WHITE OAK	1
861	W	TAYLOR			1	2.5"	CELTIS OCCIDENTALIS	HACKBERRY	1
865	W	TAYLOR			2	2.5"	CELTIS OCCIDENTALIS	HACKBERRY	2
867	W	TAYLOR			2	3"	ULMUS X 'NEW HORIZON'	NEW HORIZON ELM	2
1049	W	TAYLOR	1			2.5"	GLEDITSIA TRIACANTHOS INERMIS 'SHADEMASTER'	SHADEMASTER HONEYLOCUST	1
700	W	VAN BUREN	2			2.5"	GLEDITSIA TRIACANTHOS INERMIS 'SHADEMASTER'	SHADEMASTER HONEYLOCUST	2
844	W	VAN BUREN	1			2.5"	GLEDITSIA TRIACANTHOS INERMIS 'SHADEMASTER'	SHADEMASTER HONEYLOCUST	1
900	W	VAN BUREN	1			2.5"	QUERCUS BICOLOR	SWAMP WHITE OAK	1
921	W	VAN BUREN	1			2.5"	SYRINGA RETICULATA	JAPANESE TREE LILAC	1
922	W	VAN BUREN		1		2.5"	GYMNOCLADUS DIOICUS	KENTUCKY COFFEE TREE	1
933	W	VAN BUREN	1			2.5"	SYRINGA RETICULATA	JAPANESE TREE LILAC	1
1001	W	VAN BUREN	5			2.5"	SYRINGA RETICULATA	JAPANESE TREE LILAC	5
1025	W	VAN BUREN	3			2.5"	GLEDITSIA TRIACANTHOS INERMIS 'SHADEMASTER'	SHADEMASTER HONEYLOCUST	3
1025	W	VAN BUREN	4			2.5"	GYMNOCLADUS DIOICUS	KENTUCKY COFFEE TREE	4
1148	W	VAN BUREN	1			2.5"	GYMNOCLADUS DIOICUS	KENTUCKY COFFEE TREE	1
1224	W	VAN BUREN	1			2.5"	GYMNOCLADUS DIOICUS	KENTUCKY COFFEE TREE	1
1430	W	VAN BUREN	3			2.5"	GYMNOCLADUS DIOICUS	KENTUCKY COFFEE TREE	3
563	W	WASHINGTON	2			2.5"	GYMNOCLADUS DIOICUS	KENTUCKY COFFEE TREE	2
			85	8	13				106

## 60Y67 (UIC - TREE PLANTING LOCATIONS)

BUILDING NUMBER	ADDRESS	SIZE	SCIENTIFIC NAME	COMMON NAME	QUANTITY	KEY
604D	LECTURE CENTER D, SOUTH	3" CALIPER	ACER FREEMANII 'AUTUMN BLAZE'	AUTUMN BLAZE FREEMAN MAPLE	1	AF
631	SEO, NORTH SIDE	2.5"	ACER CAMPESTRE	HEDGE MAPLE	1	AC
617	BURNHAM HALL, SE CORNER	8'	AMELANCHIER X GRANDIFLORA	SERVICEBERRY	1	AMG
611	SE SIDE				2	
LOT 1A/B	PERIMETER INFILL PLANTING				15	
624	UIC THEATER	6'	CORNUS MAS 'GOLDEN GLORY'	GOLDEN GLORY CORNELIAN CHERRY	3	CM
655	STUDENT SERVICES				3	
618	WEST - PEDESTRIAN WAY				10	
615	TAFT HALL,SOUTH SIDE	7'	CRATAEGUS TRIACANTHOS 'INERMIS'	THORNLESS COCKSPUR HAWTHORN	2	CT
617	BURNHAM HALL, NE CORNER				1	
648	EAST SIDE				4	
LOT 5	NORTH SIDE				14	
LOT 1B	NW CORNER AT RAMP				2	
619	NE SIDE	5'	HAMAMELIS VERNALIS	VERNAL WITCHHAZEL	7	HV
631	SEO, EAST SIDE	8'	JUNIPERUSVIRGINIANA 'CANAERTII'	CANAERTII JUNIPER	2	JV
615	TAFT, SW CORNER	8'	MAGNOLIA LOEBNERI 'MERRILL'	MERRILL MAGNOLIA	1	ML
611	EAST SIDE				1	
615	TAFT, WEST SIDE	7'	MALUS 'RED PEACOCK'	RED PEACOCK CRABAPPLE	3	MRP
616	ADAMS, NE CORNER				2	
618	WEST - PEDESTRIAN WAY				3	
619	EAST SIDE, HIDE DUMPSTERS	6'	PINUS SYLVESTRIS	SCOTCH PINE	2	PS
		7'			2	
GROVE	EAST SIDE	2.5"	QUERCUS ALBA	WHITE OAK	1	QA
LOT 1A/B	INTERNAL CORNERS	2.5"	QUERCUS BICOLOR	SWAMP WHITE OAK	8	QB
LOT 1A/B	SOUTH PERIMETER	2.5"	QUERCUS MUEHLENBERGII	CHINKAPIN OAK	3	QM
615	TAFT, NORTH SIDE	2.5"	ROBINIA PSEUDOACACIA CHICAGO BLUES	CHICAGO BLUES BLACK LOCUST	3	RP
619	EAST SIDE	8'	SYRINGA RETICULATA	JAPANESE TREE LILAC	1	SR
618	NEAR LOADING DOCK				2	
LOT 1A	NE CORNER IN FENCE				1	
LOT 1B	NW CORNER AT RAMP				1	
631	SEO, NORTH SIDE	2.5"	TAXODIUM DISTICHUM	BALD CYPRESS	3	TD
604F	SOUTH SIDE	3"	ULMUS 'MORTON'	ACCOLADE ELM	1	UM
648	SOUTH SIDE				2	
LOT 1A/B	INTERNAL ISLANDS				5	
LOT 5	SOUTH SIDE	7'	VIBURNUM PRUNIFOLIUM	BLACKHAW VIBURNUM	27	VP
LOT 1A/B	PERIMETER INFILL PLANTING				15	
<b>TOTAL</b>					<b>155</b>	

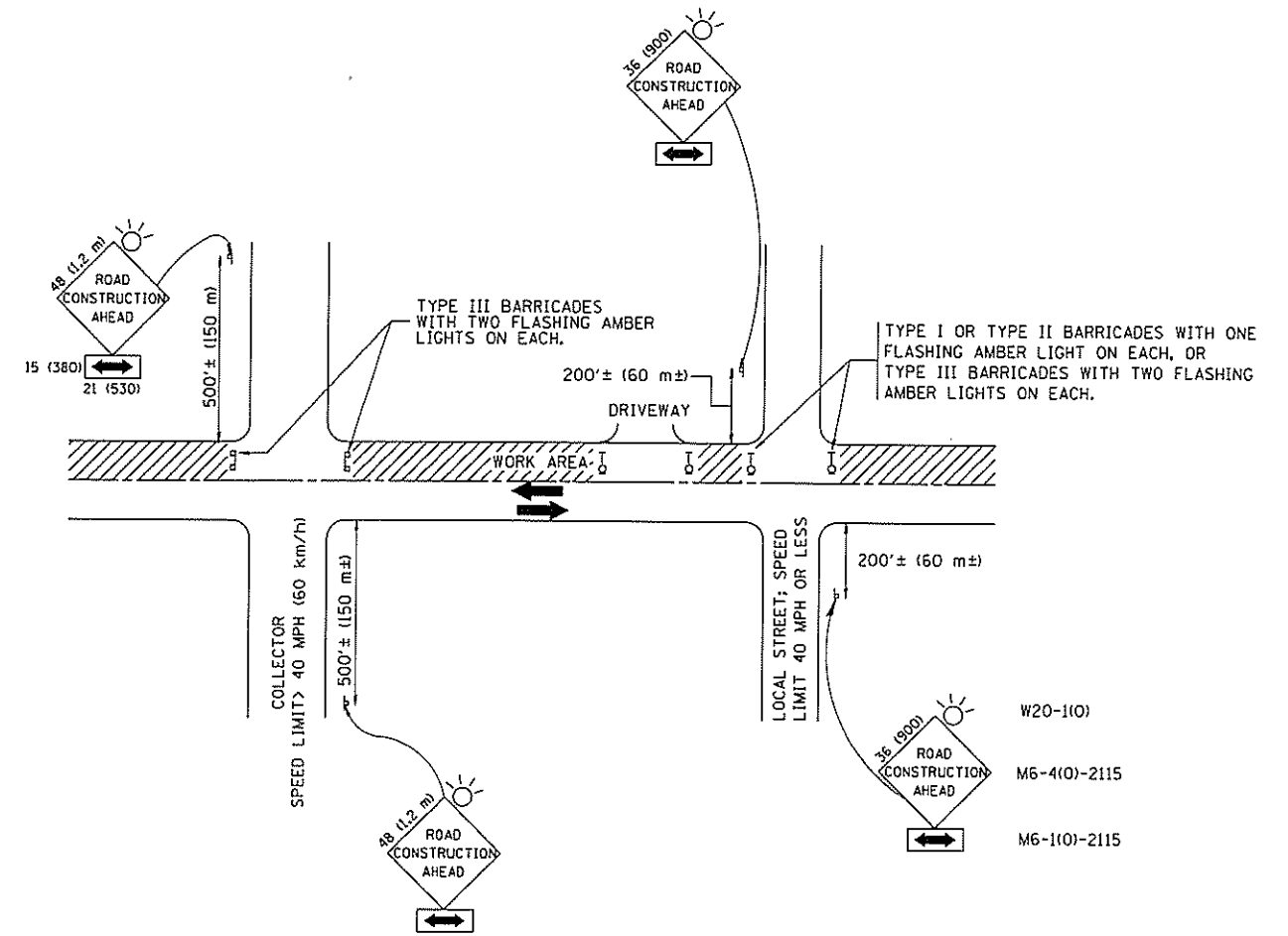
# CDOT - SUPPLEMENTAL WATERING & TREE CARE LOCATIONS

ADDRESS NUMBER	DIRECTION	STREET	TYPE		SIZE	SCIENTIFIC NAME	COMMON NAME	QTY	SUPPLEMENTAL WATERING	TREE CARE
			OPEN PIT	PARKWAY						
901	S	ABERDEEN	1		3.0"	TAXODIUM DISTICHUM 'SHAWNEE BRAVE'	SHAWNEE BRAVE BALD CYPRESS	1	1	1
1111	S	ASHLAND	1		3.0"	GYMNOCLADUS DIOICUS	KENTUCKY COFFEE TREE	1	1	1
401	S	CLINTON	3		3.0"	GLEDITSIA TRIACANTHOS INERMIS 'SHADEMASTER'	SHADEMASTER HONEYLOCUST	3	3	3
1551	W	CONGRESS		1	3.0"	GYMNOCLADUS DIOICUS	KENTUCKY COFFEE TREE	1	1	1
1210	W	GRENSHAW	1		3.0"	GLEDITSIA TRIACANTHOS INERMIS 'SHADEMASTER'	SHADEMASTER HONEYLOCUST	1	1	1
15	S	HALSTED	2		3.0"	GYMNOCLADUS DIOICUS	KENTUCKY COFFEE TREE	2	2	2
128	S	HALSTED	1		3.0"	GYMNOCLADUS DIOICUS	KENTUCKY COFFEE TREE	1	1	1
1351	W	HARRISON	3		3.0"	GYMNOCLADUS DIOICUS	KENTUCKY COFFEE TREE	3	3	3
1353	W	HARRISON	2		2.5"	QUERCUS BICOLOR	SWAMP WHITE OAK	2	2	2
728	W	JACKSON	1		3.0"	GLEDITSIA TRIACANTHOS INERMIS 'SHADEMASTER'	SHADEMASTER HONEYLOCUST	1	1	1
130	S	JEFFERSON	1		3.0"	GYMNOCLADUS DIOICUS	KENTUCKY COFFEE TREE	1	1	1
221	S	JEFFERSON	3		3.0"	GYMNOCLADUS DIOICUS	KENTUCKY COFFEE TREE	3	3	3
231	S	JEFFERSON	3		3.0"	GYMNOCLADUS DIOICUS	KENTUCKY COFFEE TREE	3	3	3
301	S	JEFFERSON	2		3.0"	GYMNOCLADUS DIOICUS	KENTUCKY COFFEE TREE	2	2	2
1123	S	JEFFERSON	1		3.0"	GLEDITSIA TRIACANTHOS INERMIS 'SHADEMASTER'	SHADEMASTER HONEYLOCUST	1	1	1
1132	S	JEFFERSON	1		3.0"	GLEDITSIA TRIACANTHOS INERMIS 'SHADEMASTER'	SHADEMASTER HONEYLOCUST	1	1	1
816	S	LAFLIN		1	2.5"	TILIA MONGOLICA 'HARVEST GOLD'	HARVEST GOLD LINDEN	1	1	1
817	S	LAFLIN		1	2.5"	GINKGO BILOBA 'AUTUMN GOLD'	AUTUMN GOLD GINKGO	1	1	1
819	S	LAFLIN		1	3.0"	MAACKIA AMURENSIS	AMUR MAACKIA	1	1	1
826	S	LAFLIN		1	3.0"	MAACKIA AMURENSIS	AMUR MAACKIA	1	1	1
830	S	LAFLIN		1	3.0"	TAXODIUM DISTICHUM 'SHAWNEE BRAVE'	SHAWNEE BRAVE BALD CYPRESS	1	1	1
831	S	LAFLIN		1	3.0"	CELTIS OCCIDENTALIS	HACKBERRY	1	1	1
832	S	LAFLIN		1	2.5"	TILIA MONGOLICA 'HARVEST GOLD'	HARVEST GOLD LINDEN	1	1	1
835	S	LAFLIN		1	2.5"	GINKGO BILOBA 'AUTUMN GOLD'	AUTUMN GOLD GINKGO	1	1	1
836	S	LAFLIN		1	2.5"	CATALPA SPECIOSA	CATALPA	1	1	1
900	S	LAFLIN		1	2.5"	GINKGO BILOBA 'AUTUMN GOLD'	AUTUMN GOLD GINKGO	1	1	1
901	S	LAFLIN		1	2.5"	QUERCUS MUEHLENBERGII	CHINKAPIN OAK	1	1	1
907	S	LAFLIN		1	2.5"	CELTIS OCCIDENTALIS	HACKBERRY	1	1	1
921	S	LAFLIN		1	2.5"	QUERCUS BICOLOR	SWAMP WHITE OAK	1	1	1
929	S	LAFLIN	1		2.5"	SYRINGA RETICULATA 'SUMMER SNOW'	SUMMER SNOW JAPANESE TREE LILAC	1	1	1
1003	S	LAFLIN	2		3"	GLEDITSIA TRIACANTHOS INERMIS 'SHADEMASTER'	SHADEMASTER HONEYLOCUST	2	2	2

ADDRESS NUMBER	DIRECTION	STREET	TYPE		SIZE	SCIENTIFIC NAME	COMMON NAME	QTY	SUPPLEMENTAL WATERING	TREE CARE
			OPEN PIT	PARKWAY						
1203	W	LEXINGTON	1		2.5"	GINKGO BILOBA 'AUTUMN GOLD'	AUTUMN GOLD GINKGO	1	1	1
1207	W	LEXINGTON	1		2.5"	GINKGO BILOBA 'AUTUMN GOLD'	AUTUMN GOLD GINKGO	1	1	1
1223	W	LEXINGTON	1		2.5"	QUERCUS MUEHLENBERGII	CHINKAPIN OAK	1	1	1
1225	W	LEXINGTON	1		3.0"	CELTIS OCCIDENTALIS	HACKBERRY	1	1	1
1229	W	LEXINGTON	1		2.5"	CATALPA SPECIOSA	CATALPA	1	1	1
1435	W	LEXINGTON	1		2.5"	QUERCUS BICOLOR	SWAMP WHITE OAK	1	1	1
319	S	LOOMIS		4	3"	ULMUS X PATRIOT	PATRIOT ELM	4	4	4
748	S	LOOMIS	1		2.5"	QUERCUS BICOLOR	SWAMP WHITE OAK	1	1	1
801	S	LOOMIS	1		2.5"	QUERCUS MUEHLENBERGII	CHINKAPIN OAK	1	1	1
848	W	MADISON	1		3.0"	GYMNOCLADUS DIOICUS	KENTUCKY COFFEE TREE	1	1	1
1409	W	POLK	1		3.0"	TAXODIUM DISTICHUM 'SHAWNEE BRAVE'	SHAWNEE BRAVE BALD CYPRESS	1	1	1
1501	W	POLK	1		3.0"	CELTIS OCCIDENTALIS	HACKBERRY	1	1	1
200	S	RACINE	1		3.0"	TAXODIUM DISTICHUM 'SHAWNEE BRAVE'	SHAWNEE BRAVE BALD CYPRESS	1	1	1
800	S	RACINE	1		3.0"	GYMNOCLADUS DIOICUS	KENTUCKY COFFEE TREE	1	1	1
808	S	RACINE	1		3.0"	GYMNOCLADUS DIOICUS	KENTUCKY COFFEE TREE	1	1	1
1030	S	RACINE	1		2.5"	CATALPA SPECIOSA	CATALPA	1	1	1
608	W	ROOSEVELT	1		3.0"	GYMNOCLADUS DIOICUS	KENTUCKY COFFEE TREE	1	1	1
612	W	ROOSEVELT	1		3.0"	GYMNOCLADUS DIOICUS	KENTUCKY COFFEE TREE	1	1	1
614	W	ROOSEVELT	1		3.0"	GYMNOCLADUS DIOICUS	KENTUCKY COFFEE TREE	1	1	1
616	W	ROOSEVELT	1		3.0"	GYMNOCLADUS DIOICUS	KENTUCKY COFFEE TREE	1	1	1
1001	W	ROOSEVELT	2		3.0"	GYMNOCLADUS DIOICUS	KENTUCKY COFFEE TREE	2	2	2
1246	W	ROOSEVELT		2	3.0"	GLEDITSIA TRIACANTHOS INERMIS 'SHADEMASTER'	SHADEMASTER HONEYLOCUST	2	2	2
1529	W	ROOSEVELT	1		3.0"	GYMNOCLADUS DIOICUS	KENTUCKY COFFEE TREE	1	1	1
1048	W	TAYLOR	1		3.0"	TAXODIUM DISTICHUM 'SHAWNEE BRAVE'	SHAWNEE BRAVE BALD CYPRESS	1	1	1
1301	W	TAYLOR	1		3.0"	TAXODIUM DISTICHUM 'SHAWNEE BRAVE'	SHAWNEE BRAVE BALD CYPRESS	1	1	1
1508	W	TAYLOR	1		3.0"	GYMNOCLADUS DIOICUS	KENTUCKY COFFEE TREE	1	1	1
1559	W	TAYLOR	1		3.0"	GYMNOCLADUS DIOICUS	KENTUCKY COFFEE TREE	1	1	1
1035	W	VAN BUREN	1		3.0"	GYMNOCLADUS DIOICUS	KENTUCKY COFFEE TREE	1	1	1

## UIC - 2015 TREE PLANTING LOCATIONS

BUILDING NUMBER	ADDRESS	SIZE	SCIENTIFIC NAME	COMMON NAME	QUANTITY	SUPPLEMENTAL WATERING	TREE CARE
Lot 9	501 S. Morgan	3" CALIPER	ACER FREEMANII 'AUTUMN BLAZE'	AUTUMN BLAZE FREEMAN MAPLE	3	3	3
601	601 S. Morgan	3" CALIPER	ACER FREEMANII 'AUTUMN BLAZE'	AUTUMN BLAZE FREEMAN MAPLE	3	3	3
621	728 W. Roosevelt	3" CALIPER	ACER FREEMANII 'AUTUMN BLAZE'	AUTUMN BLAZE FREEMAN MAPLE	1	1	1
627	701 S. Morgan	3" CALIPER	ACER FREEMANII 'AUTUMN BLAZE'	AUTUMN BLAZE FREEMAN MAPLE	2	2	2
604D	804 S. Morgan	3" CALIPER	ACER FREEMANII 'AUTUMN BLAZE'	AUTUMN BLAZE FREEMAN MAPLE	2	2	2
605	750 S. Halsted	3" CALIPER	TAXODIUM DISTICHUM	BALD CYPRESS	3	3	3
Lot 5	1135 S. Morgan	2.5" CALIPER	ULMUS AMERICANA PRINCETON	PRINCETON AMERICAN ELM	3	3	3
618	1007 W. Harrison	7' HEIGHT	AMELANCHIER X GRANDIFLORA 'AUTUMN BRILLIANCE'	AUTUMN BRILLIANCE APPLE SERVICEBERRY	7	7	7
631	851 S. Morgan	7' HEIGHT	AMELANCHIER X GRANDIFLORA 'AUTUMN BRILLIANCE'	AUTUMN BRILLIANCE APPLE SERVICEBERRY	2	2	2
611	1140 S. Morgan	7' HEIGHT	AMELANCHIER X GRANDIFLORA 'AUTUMN BRILLIANCE'	AUTUMN BRILLIANCE APPLE SERVICEBERRY	3	3	3
619	845 W. Taylor	6' HEIGHT	CERCIS CANADENSIS	EASTERN REDBUD	2	2	2
Lot 5	1135 S. Morgan	6' HEIGHT	CERCIS CANADENSIS	EASTERN REDBUD	1	1	1
633	901 W. Roosevelt	2.5" CALIPER	SYRINGA RETICULATA 'SUMMER SNOW'	SUMMER SNOW JAPANESE TREE LILAC	4	4	4
Grove	851 S. Morgan	6' HEIGHT	OSTRYA VIRGINIANA	IRONWOOD	1	1	1
Lot 11	1055 W. Congress Pkwy	3" CALIPER	TILIA CORDATA 'GLENLEVEN'	GLENLEVEN LITTLE LEAF LINDEN	6	6	6
604D	804 S. Morgan	3" CALIPER	ACER FREEMANII 'AUTUMN BLAZE'	AUTUMN BLAZE FREEMAN MAPLE	2	2	2
609	801 S. Morgan	7' HEIGHT	PSEUDOTSUGA MENZIESSI	DOUGLAS FIR	2	2	2
612	703 S. Morgan	2.5" CALIPER	ACER CAMPESTRE	HEDGE MAPLE	1	1	1
621	728 W. Roosevelt	2.5" CALIPER	MALUS PRAIRIFIRE	PRAIRIFIRE CRABAPPLE	1	1	1
Lot 4	761 W. Polk	2.5" CALIPER	MALUS PRAIRIFIRE	PRAIRIFIRE CRABAPPLE	3	3	3
Lot 1A	1109 W. Harrison	2.5" CALIPER	GYMNOCLADUS DIOICUS 'ESPRESSO-JFS'	ESPRESSO KENTUCKY COFFEETREE	1	1	1
617	828 S. Halsted	2.5" CALIPER	MALUS RED JEWEL	RED JEWEL CRABAPPLE	2	2	2
612	703 S. Morgan	2.5" CALIPER	MALUS RED JEWEL	RED JEWEL CRABAPPLE	12	12	12
619	845 W. Taylor	2.5" CALIPER	ULMUS 'MORTON'	ACCOLADE ELM	1	1	1
Lot 4	761 W. Polk	2.5" CALIPER	ULMUS 'MORTON'	ACCOLADE ELM	1	1	1
611	1140 S. Morgan	2.5" CALIPER	ULMUS 'MORTON'	ACCOLADE ELM	1	1	1
618 East	1007 W. Harrison	6' HEIGHT	CORNUS MAS 'GOLDEN GLORY'	GOLDEN GLORY CORNELIAN CHERRY DOGWOOD	7	7	7
623	1040 W. Harrison	3" CALIPER	ACER RUBRUM 'BOWHALL'	BOWHALL RED MAPLE	5	5	5
Lot 11		3" CALIPER	ACER RUBRUM 'BOWHALL'	BOWHALL RED MAPLE	1	1	1



TRAFFIC CONTROL AND PROTECTION FOR SIDE ROADS, INTERSECTIONS, AND DRIVEWAYS

NOTES:

A. FOR NO LANE RESTRICTION ON THE SIDE ROAD OR DRIVEWAYS

- SIDE ROAD WITH A SPEED LIMIT OF 40 MPH (60 km/h) OR LESS AS SHOWN ON THE DRAWING AND AS DIRECTED BY THE ENGINEER:
  - ONE ROAD CONSTRUCTION AHEAD SIGN 36 x 36 (900x900) WITH A FLASHER AND FLAG MOUNTED ON IT APPROXIMATELY 200' (60 m) IN ADVANCE OF THE MAIN ROUTE.
  - THE CLOSED PORTION OF THE MAIN ROUTE SHALL BE PROTECTED BY BLOCKING WITH TYPE I, TYPE II OR TYPE III BARRICADES, 1/3 OF THE CROSS SECTION OF THE CLOSED PORTION.
- SIDE ROAD WITH A SPEED LIMIT GREATER THAN 40 MPH (60 km/h) AS SHOWN ON THE DRAWING AND AS DIRECTED BY THE ENGINEER:
  - ONE ROAD CONSTRUCTION AHEAD SIGN 48 x 48 (1.2 m x 1.2 m) WITH A FLASHER MOUNTED ON IT APPROXIMATELY 500' (150 m) IN ADVANCE OF THE MAIN ROUTE.
  - THE CLOSED PORTION OF THE MAIN ROUTE SHALL BE PROTECTED BY BLOCKING WITH TYPE III BARRICADES, 1/2 OF THE CROSS SECTION OF THE CLOSED PORTION.
- WHEN THE SIDE ROAD LIES BETWEEN THE BEGINNING OF THE MAINLINE SIGNING AND THE WORK ZONE, A SINGLE HEADED ARROW (M6-1) SHALL BE USED IN LIEU OF THE DOUBLE HEADED ARROW (M6-4).

B. FOR A LANE CLOSURE ON A SIDE ROAD OR DRIVEWAY:

USE APPLICABLE PORTIONS OF THE TYPICAL APPLICATION OF TRAFFIC CONTROL DEVICES (STD. 701501, STD. 701606 OR THE APPROPRIATE STANDARD). THE SPACING OF SIGNS AND BARRICADES SHALL BE ADJUSTED FOR FIELD CONDITIONS AS DIRECTED BY THE ENGINEER. THE DIRECTIONAL ARROW SHALL BE COVERED OR REMOVED WHEN NO LONGER CONSISTENT WITH THE SIDE ROAD LANE CLOSURE.

C. ADVANCE WARNING SIGNS ARE TO BE OMITTED ON DRIVEWAY UNLESS OTHERWISE NOTED.

D. THE TRAFFIC CONTROL AND PROTECTION FOR SIDE ROADS, INTERSECTIONS, AND DRIVEWAYS SHALL BE INCIDENTAL TO THE COST OF SPECIFIED TRAFFIC CONTROL STANDARDS OR ITEMS.

All dimensions are in millimeters (inches) unless otherwise shown.

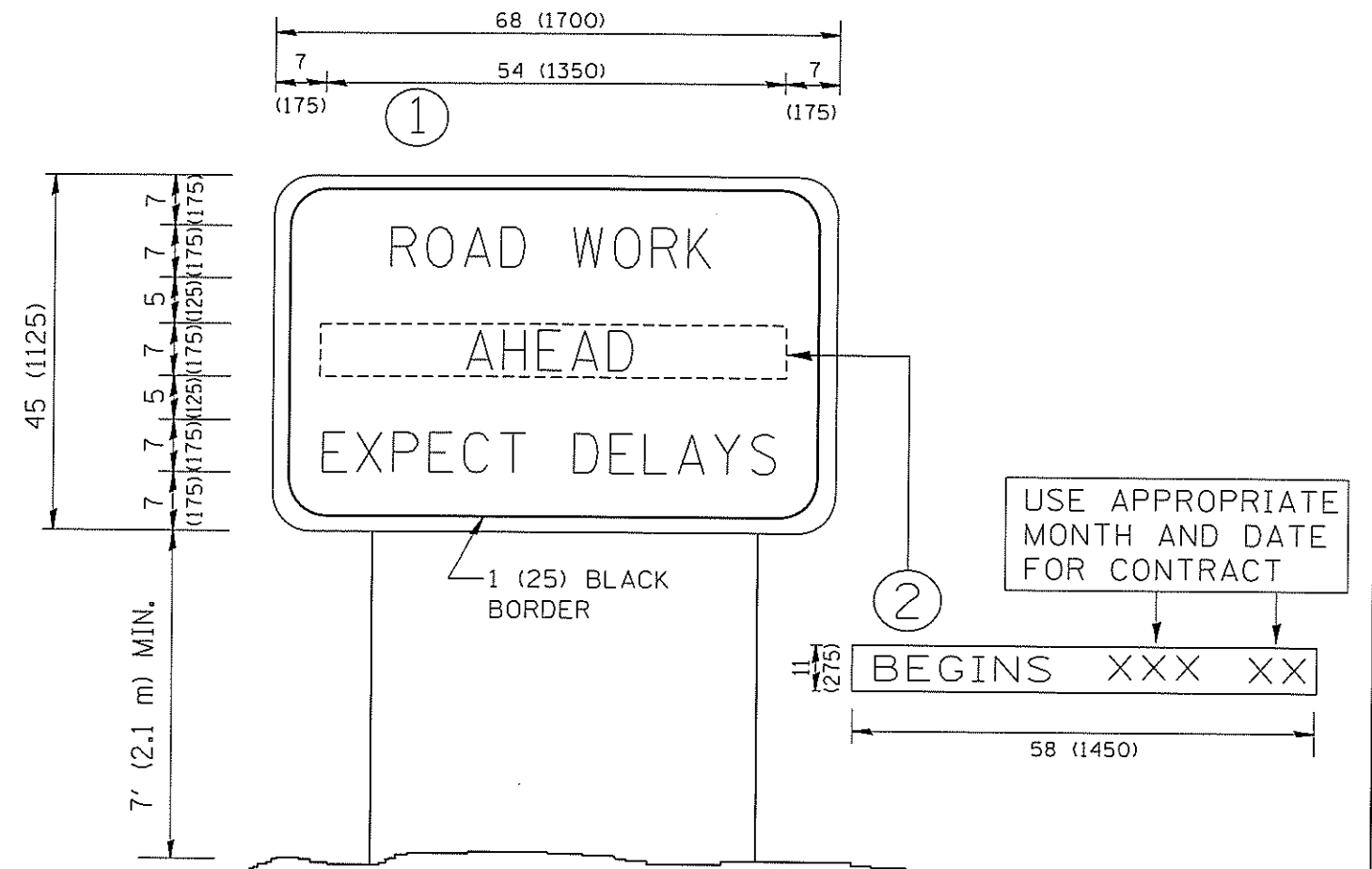
FILE NAME = W:\distsd\22x34\1c10.dgn	USER NAME = goglionebt	DESIGNED - LHA	REVISED - J. OBERLE 10-18-95
		DRAWN -	REVISED - A. HOUSEH 03-06-96
		CHECKED -	REVISED - A. HOUSEH 10-15-96
		DATE - 06-89	REVISED - T. RAMMACHER 01-06-00

STATE OF ILLINOIS  
DEPARTMENT OF TRANSPORTATION

TRAFFIC CONTROL AND PROTECTION FOR  
SIDE ROADS, INTERSECTIONS, AND DRIVEWAYS

SCALE: NONE SHEET NO. 1 OF 1 SHEETS STA. TO STA.

F.A.I. RTE.	SECTION	COUNTY	TOTAL SHEETS	SHEET NO.
90/94	2014-0515	COOK	15	14
	TC-10			
FED. ROAD DIST. NO. 1 [ILLINOIS] FED. AID PROJECT CONTRACT NO. 60Y67				



**NOTES:**

1. USE BLACK LETTERING ON ORANGE BACKGROUND.
2. ERECT SIGNS IN ADVANCE OF THE LOCATION FOR THE "ROAD CONSTRUCTION AHEAD" SIGN AT LOCATIONS AS DIRECTED BY THE ENGINEER.
3. ERECT SIGN ① WITH INSTALLED PANEL ② ONE WEEK PRIOR TO THE START OF CONSTRUCTION.
4. REMOVE PANEL ② SOON AFTER THE START OF CONSTRUCTION.
5. SEE SPECIAL PROVISION FOR "TEMPORARY INFORMATION SIGNING" FOR ADDITIONAL INFORMATION.
6. ONE SIGN ASSEMBLY EQUALS 25.70 SQ. FT. (2.3 SQ. M.)
7. SHALL BE PAID FOR AS TEMPORARY INFORMATION SIGNING.

ALL DIMENSIONS ARE IN INCHES (MILLIMETERS)  
UNLESS OTHERWISE SHOWN.

FILE NAME *	USER NAME * gaglionebt	DESIGNED -	REVISED - R. MIRS 09-15-97
W:\data\std\22x34\to22.dgn		DRAWN -	REVISED - R. MIRS 12-11-97
		PLOT SCALE * 50.000' / IN.	REVISED - T. RAMMACHER 02-02-99
		PLOT DATE * 1/4/2008	REVISED - C. JUCIUS 01-31-07

STATE OF ILLINOIS  
DEPARTMENT OF TRANSPORTATION

ARTERIAL ROAD  
INFORMATION SIGN

SCALE: NONE SHEET NO. 1 OF 1 SHEETS STA. TO STA.

F.A. RTE.	SECTION	COUNTY	TOTAL SHEETS	SHEET NO.
90/94	2014-051LS	COOK	15	15
TC-22			CONTRACT NO. 60Y07	
FED. ROAD DIST. NO. 1 ILLINOIS FED. AID PROJECT				