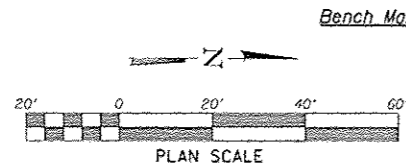




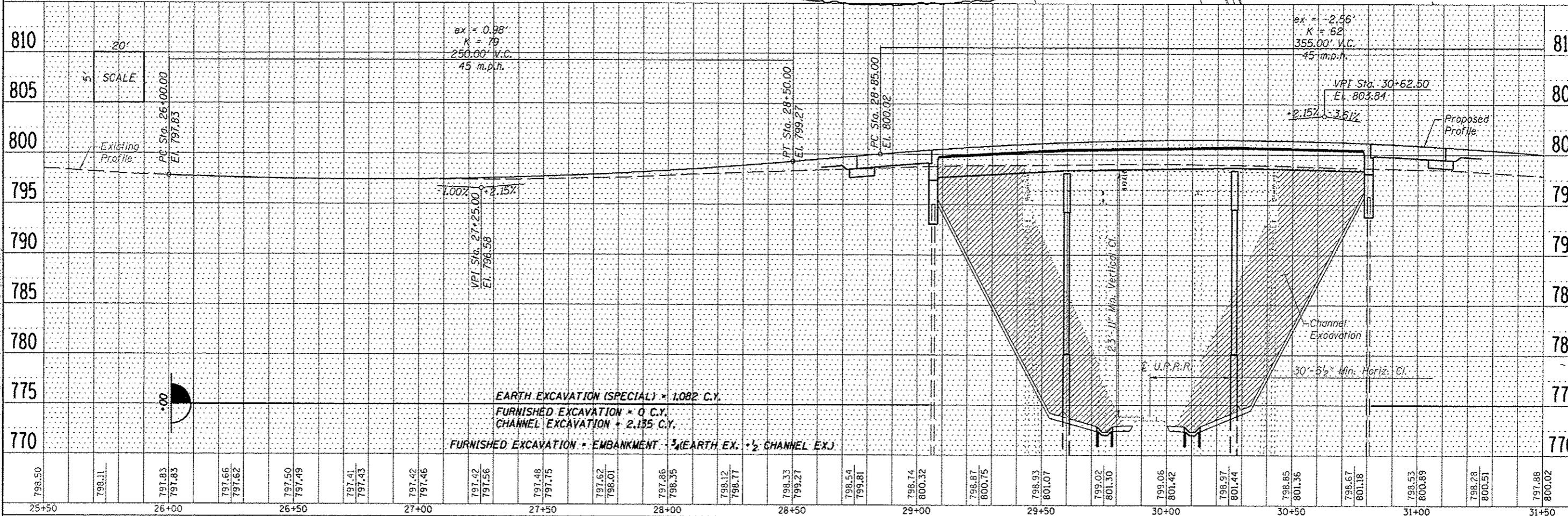
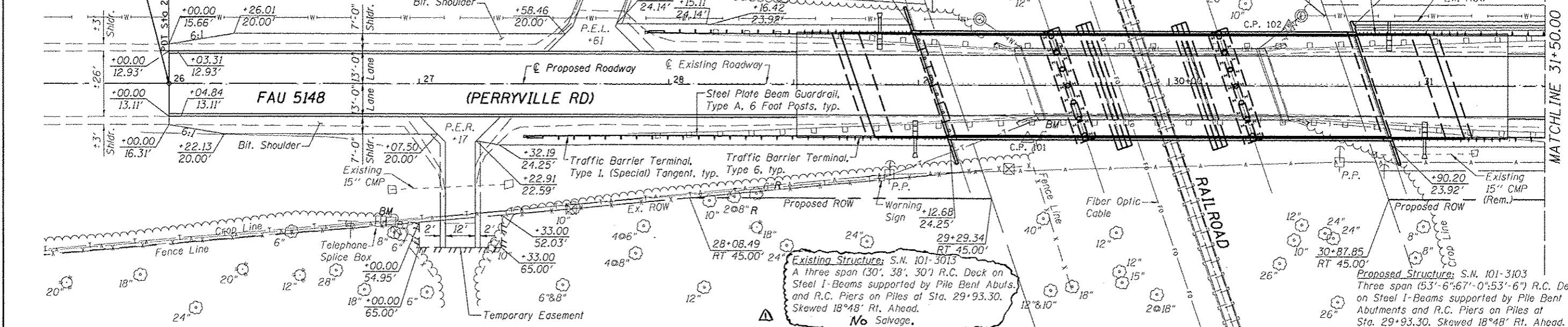
Know what's below.
Call before you dig.



Bench Mark: RR Spike in the 2nd P.P. south of existing RR bridge - east side of Perryville Road +55' Rt. Sta. 26+89, El. 793.47

Bench Mark: Chis. "□" on the east parapet wall of existing railroad bridge - southeast corner of bridge +13' Rt. Sta. 28+49, El. 799.54

Construction Begins Sta. 26+00.00



DATE	
BY	
PLAN	
REVISED	
CHECKED	
DATE	
BY	
NO.	

DATE	
BY	
PROFILE	
REVISED	
CHECKED	
DATE	
BY	
NO.	



DESIGNED - LGN	REVISED - 1/5/2016
CHECKED - GFS	REVISED -
DRAWN - FDL	REVISED -
CHECKED - GFS	REVISED -

WINNEBAGO COUNTY
PERRYVILLE ROAD OVER UNION PACIFIC RAILROAD
STATION 29 + 93.30

PLAN & PROFILE
STRUCTURE NO. 101-3103
SCALE: 1" = 20' SHEET NO. 1 OF 2 SHEETS STA. 25+50.00 TO STA. 31+50.00

F.A.U. RTE.	SECTION	COUNTY	TOTAL SHEETS	SHEET NO.
S148	04-00359-00-BR	WINNEBAGO	45	7
WHA# 1261010		CONTRACT NO. 85599		
ILLINOIS FED. AID PROJECT BRW-5099072				

EXISTING STRUCTURE: S.N. 101-3103

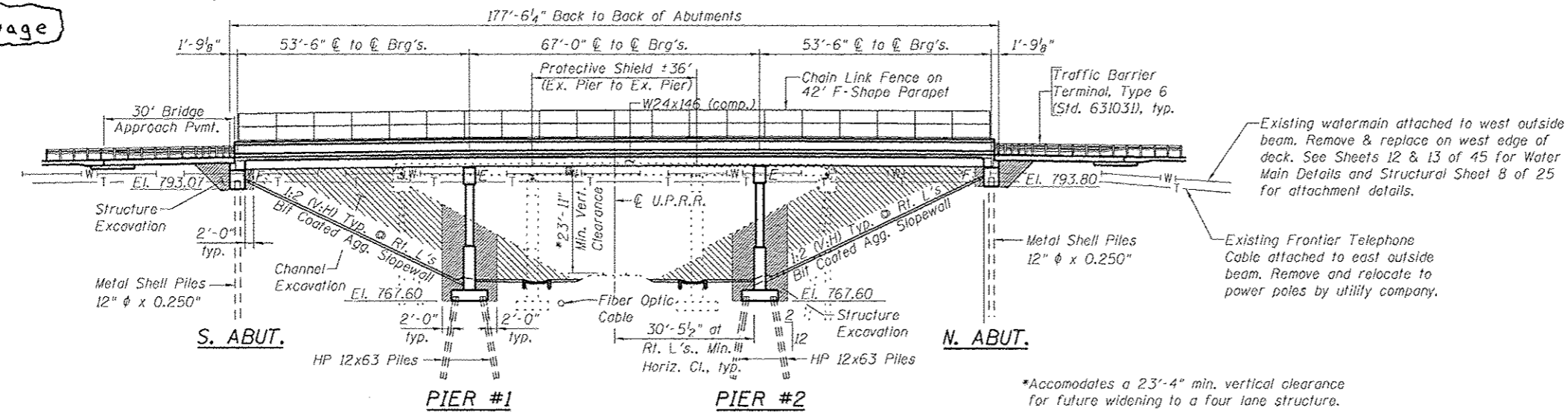
Originally built in 1954 as F.A.S. 1045 under Section 93B. The existing structure consists of three continuous spans (30'-0", 38'-0", 30'-0") with steel I-Beams and a reinforced concrete deck. The structure is 102'-2 3/4" back to back of abutments and 28'-4" out to out bridge width. The structure is on open concrete abutments on precast piles and multi-column piers on spread footings. Structure is skewed 18°-48' right ahead. The structure is to be removed and replaced. Road shall be closed to traffic during construction.

BENCH MARK: Chis. "□" on the east parapet wall of existing railroad bridge - southeast corner of bridge, El. 799.54

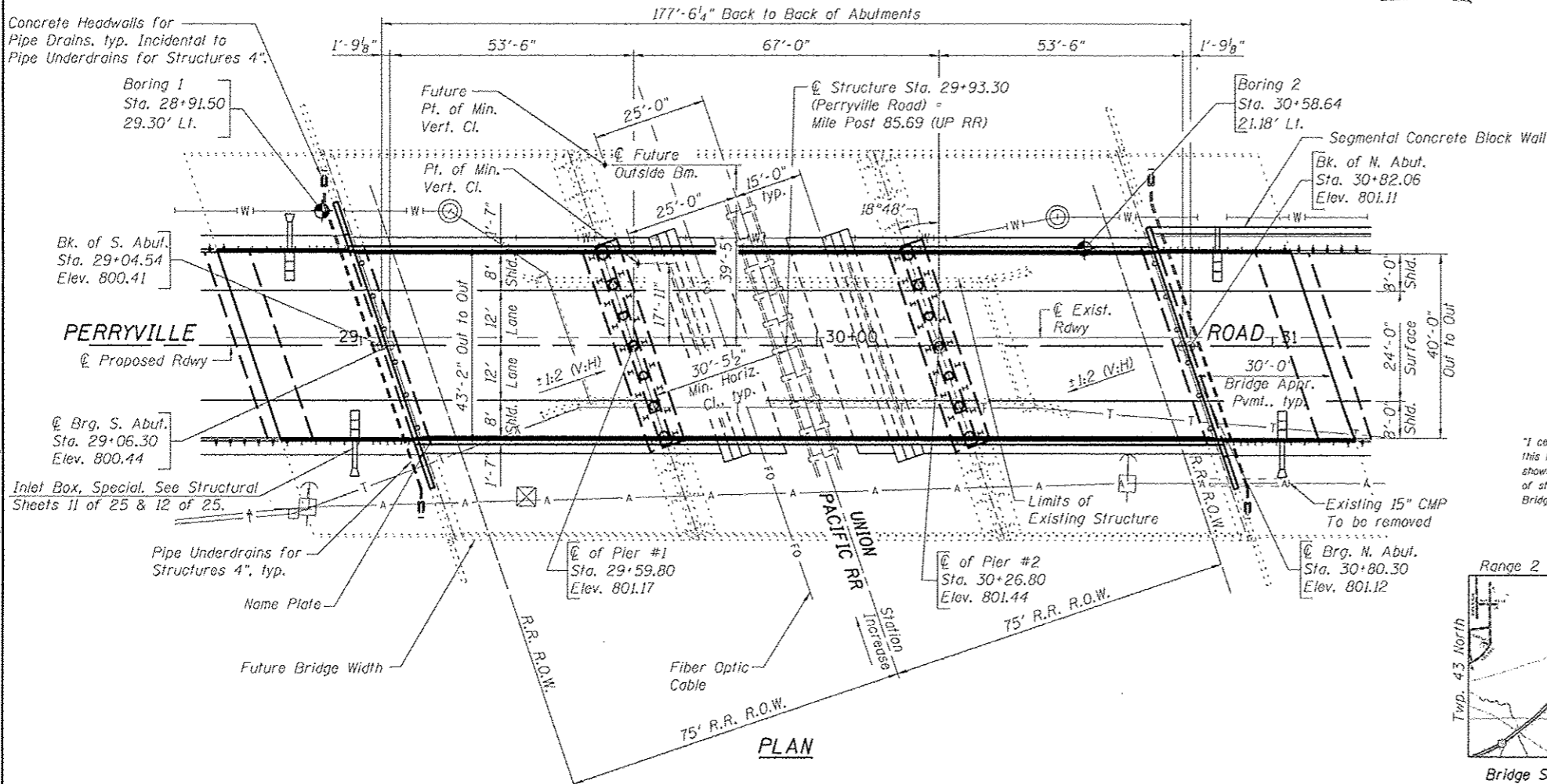
INDEX OF STRUCTURAL SHEETS

1. General Plan and Elevation
2. General Notes and Bill of Material
3. Slopewall and Pile Layout
4. Top of Slab Elevations
5. Top of South Approach Slab Elevations
6. Top of North Approach Slab Elevations
7. Superstructure
8. Superstructure Details
9. Diaphragm Details
10. Bridge Approach Slab Details
11. Inlet Box, Special Details (Sheet 1 of 2)
12. Inlet Box, Special Details (Sheet 2 of 2)
13. Bridge Fence Railing, Parapet Mounted
14. Structural Steel Details
15. Bearing Details
16. South Abutment Details
17. North Abutment Details
18. Segmental Concrete Block Wall Details
19. Pier #1 Details
20. Pier #2 Details
21. Metal Shell Pile Details
22. HP Pile Details
23. Bar Splicer Assembly and Mechanical Splicer Details
24. Cantlover Forming Brackets
25. Boring Logs

No Salvage



ELEVATION

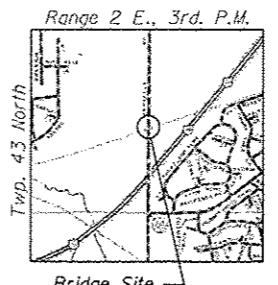


PLAN



Brian K. Conner
DATE: 11/3/2015
EXPIRES 11/30/16

"I certify that to the best of my knowledge, information and belief, this bridge design is structurally adequate for the design loading shown on the plans. The design is an economical one for the style of structure and complies with requirements of the current 'AASHTO Bridge Design Specifications.'"



LOCATION SKETCH

LOADING HL-93 & IDOT 120K PERMIT LOAD
Allow 50#/sq. ft. for future wearing surface

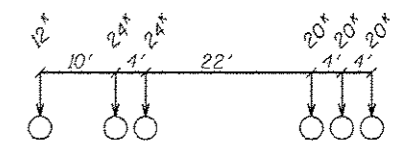
DESIGN SPECIFICATIONS
2012 AASHTO LRFD Bridge Design Specifications, 6th Edition

DESIGN STRESSES

FIELD UNITS
 $f'_c = 3,500$ psi
 $f_y = 60,000$ psi (reinforcement)
 $f_y = 50,000$ psi (#270 Grade 50)

SEISMIC DATA

Seismic Performance Zone (SPZ) = 1
Design Spectral Acceleration at 1.0 sec. (S_{D1}) = 0.079g
Design Spectral Acceleration at 0.2 sec. (S_{D5}) = 0.135g
Soil Site Class = D



120K PERMIT TRUCK CONFIGURATION

UNION PACIFIC RAILROAD
BUILT 2016 BY
WINNEBAGO COUNTY
SEC. 04-00359-00-BR
FAU RTE. 5148 STA. 29+93.30
STR. NO. 101-3103 LOADING HL-93

NAME PLATE
See Std. 515001

GENERAL PLAN AND ELEVATION
PERRYVILLE ROAD OVER UNION PACIFIC RAILROAD
F.A.U. RT. 5148 - SEC. 04-00359-00-BR
WINNEBAGO COUNTY
STATION 29+93.30 - MILE POST 85.68
STRUCTURE NO. 101-3103

WILLET HOPMANN ASSOCIATES INC.
ENGINEERING ARCHITECTURE LAND SURVEYING
809 EAST 2ND STREET, DIXON, IL 61021-0307
T: 815-264-3351 DESIGN FAX: 815-264-3352

DESIGNED - BSK	REVISED - AD 1/5/2016
CHECKED - BKC	REVISED -
DRAWN - FDL	REVISED -
CHECKED - BSK	REVISED -

WINNEBAGO COUNTY
PERRYVILLE ROAD OVER UNION PACIFIC RAILROAD
STATION 29+93.30

STRUCTURAL SHEET NO. 1 OF 25 SHEETS

F.A.U. RTE.	SECTION	COUNTY	TOTAL SHEETS	SHEET NO.
5148	04-00359-00-BR	WINNEBAGO	45	14
WHA* 1261D10			CONTRACT NO. 85599	
ILLINOIS FED. AID PROJECT BRS-5059(072)				