

STATE OF ILLINOIS
DEPARTMENT OF TRANSPORTATION

**PROPOSED
HIGHWAY PLANS**

F.A.U. 1488: 47TH STREET
PLAINFIELD ROAD TO IL ROUTE 43 (HARLEM AVENUE)
SECTION: 2020-054-RS&SW

STANDARD OVERLAY, ADA IMPROVEMENTS

PROJECT: STP-P45F-(785)
COOK COUNTY

C-91-244-20

R 12 E

FOR INDEX OF SHEETS, SEE SHEET NO. 2

THE PROJECT IS LOCATED IN VILLAGES OF BROOKFIELD,
MCCOOK, AND LYONS

TRAFFIC DATA:

2018 ADTS:
PLAINFIELD ROAD TO IL ROUTE 171: 19,600
IL ROUTE 171 TO IL ROUTE 43: 6,400

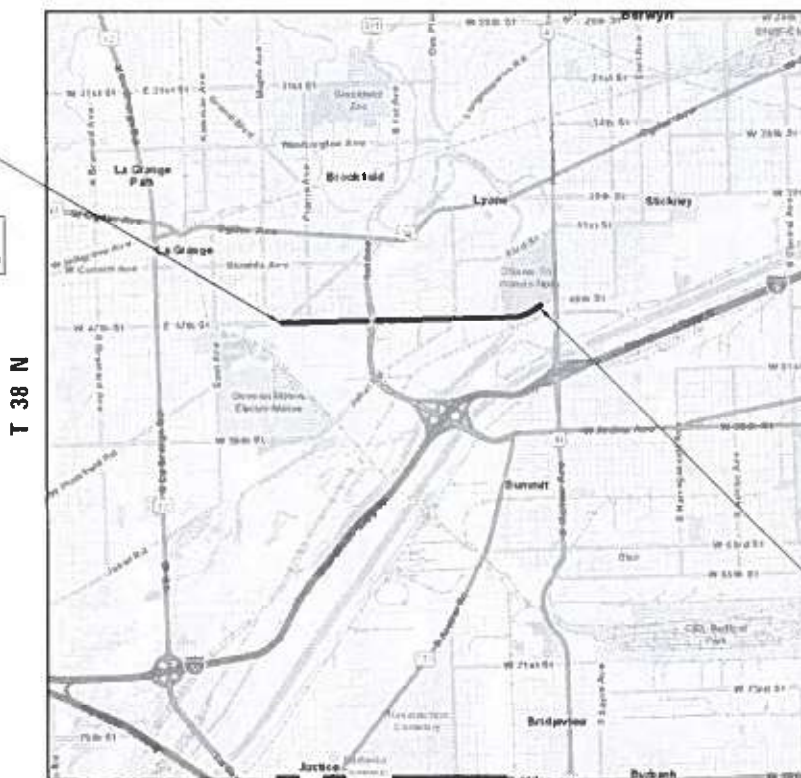
POSTED SPEED LIMIT = 25 - 40 MPH

DESIGN DESIGNATION:

MINOR ARTERIAL (PLAINFIELD ROAD TO IL ROUTE 171)
MAJOR COLLECTOR (IL ROUTE 171 TO IL ROUTE 43)

BEGIN PROJECT:
STA. 13+40.00

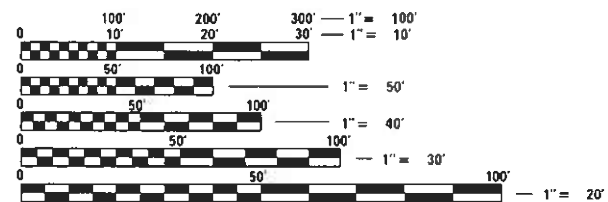
OMISSIONS:
STA. 114+14.20 TO 119+70.10



END PROJECT:
STA. 133+50.00

LYONS TOWNSHIPS

GROSS LENGTH = 12,010.0 FT = 2.275 MILE
NET LENGTH = 11,454.1 FT = 2.169 MILE



FULL SIZE PLANS HAVE BEEN PREPARED USING STANDARD
ENGINEERING SCALES. REDUCED SIZED PLANS WILL NOT
CONFORM TO STANDARD SCALES. IN MAKING MEASUREMENTS
ON REDUCED PLANS, THE ABOVE SCALES MAY BE USED.

J.U.L.I.E.
JOINT UTILITY LOCATION INFORMATION FOR EXCAVATION
1-800-892-0123
OR 811

PROJECT ENGINEER: DAN WILGREEN (847) 705-4240
PROJECT MANAGER: FAWAD AQUEEL (847) 705-4247

CONTRACT NO. 62L26

F.A.U. #	SECTION	COUNTY	TOTAL SHEETS	SHEET NO.
1488	2020-054-RS&SW	COOK	31	1
ILLINOIS CONTRACT NO. 62L26				

* TOTAL SHEETS 31 + 1 = 32

D-91-437-20



LOCATION OF SECTION INDICATED THIS: — [black rectangle] —

STATE OF ILLINOIS
DEPARTMENT OF TRANSPORTATION

SUBMITTED October 6, 2020
Anthony J. Danzig / OHS REGIONAL ENGINEER
December 4, 2020
Scott A. Elk
ENGINEER OF DESIGN AND ENVIRONMENT
December 4, 2020
James J. Gu
DIRECTOR OF HIGHWAYS PROJECT IMPLEMENTATION 13

PRINTED BY THE AUTHORITY
OF THE STATE OF ILLINOIS

INDEX OF SHEETS

SHEET NO.	DESCRIPTION
1	COVERSHEET
2	INDEX OF SHEETS & STANDARDS
3	GENERAL NOTES
4 - 6	SUMMARY OF QUANTITIES
6A	LANDSCAPING CALENDAR
7 - 8	TYPICAL SECTIONS
9 - 13	ROADWAY PLAN
14 - 18	DETECTOR LOOP REPLACEMENT PLANS
19	ADA SIDEWALK CURB RAMP DETAILS
20	BD-08: DETAILS FOR FRAMES AND LIDS ADJUSTEMENT WITH MILLING
21	BD-22: PAVEMENT PATCHING FOR HMA SURFACED PAVEMENT
22	BD-24: CURB OR CURB AND GUTTER REMOVAL AND REPLACEMENT
23	BD-32: BUTT JOINT AND HMA TAPER DETAILS
24	TC-10: TRAFFIC CONTROL AND PROTECTION FOR SIDE ROADS, INTERSECTIONS, AND DRIVEWAYS
25	TC-11: TYPICAL APPLICATIONS RAISED REFLECTIVE PAVEMENT MARKERS (SNOW-PLOW RESISTANT)
26	TC-13: DISTRICT ONE TYPICAL PAVEMENT MARKINGS
27	TC-14: TRAFFIC CONTROL AND PROTECTION AT TURN BAYS (TO REMAIN OPEN TO TRAFFIC)
28	TC-16: SHORT TERM PAVEMENT MARKING LETTERS AND SYMBOLS
29	TC-22: ARTERIAL ROAD INFORMATION SIGN
30	TS-05: STANDARD TRAFFIC SIGNAL DESIGN DETAILS
31	TS-07: DETECTOR LOOP INSTALLATION DETAILS FOR ROADWAY RESURFACING

LIST OF STATE STANDARDS

STANDARD NO.	DESCRIPTION
000001-08	STANDARD SYMBOLS, ABBREVIATIONS AND PATTERNS
420111-04	PCC PAVEMENT ROUNDOUTS
424001-11	PERPENDICULAR CURB RAMPS FOR SIDEWALKS
424006-05	DIAGONAL CURB RAMPS FOR SIDEWALKS
424011-04	CORNER PARALLEL CURB RAMPS FOR SIDEWALKS
424016-05	MID-BLOCK CURB RAMPS FOR SIDEWALKS
424021-06	DEPRESSED CORNER FOR SIDEWALKS
442201-03	CLASS C AND D PATCHES
482011-03	HMA SHOULDER STRIPS/SHOULDERS WITH RESURFACING OR WIDENING AND RESURFACING PROJECTS
602001-02	CATCH BASIN, TYPE A
602011-02	CATCH BASIN, TYPE C
604001-05	FRAME AND LIDS, TYPE 1
604061-03	FRAME AND GRATE, TYPE 12
604091-04	FRAME AND GRATE, TYPE 24
606001-07	CONCRETE CURB TYPE B AND COMBINATION CONCRETE CURB AND GUTTER
606301-04	PC CONCRETE ISLANDS AND MEDIANS
630001-12	STEEL PLATE BEAM GUARDRAIL
635001-02	DELINEATORS
701101-05	OFF-ROAD OPERATIONS, MULTILANE, 15' (4.5 M) TO 24" (600 MM) FROM PAVEMENT EDGE
701427-05	LANE CLOSURE, MULTILANE, INTERMITTENT OR MOVING OPERATION, FOR SPEEDS ? 40 MPH
701606-10	URBAN SINGLE LANE CLOSURE, MULTILANE, 2W WITH MOUNTABLE MEDIAN
701701-10	URBAN LANE CLOSURE, MULTILANE INTERSECTION
701801-06	SIDEWALK, CORNER OR CROSSWALK CLOSURE
701901-08	TRAFFIC CONTROL DEVICES
720006-04	SIGN PANEL ERECTION DETAILS
780001-05	TYPICAL PAVEMENT MARKINGS
782006-01	GUARDRAIL AND BARRIER WALL REFLECTOR MOUNTING DETAILS
814001-03	HANDHOLES
814006-03	DOUBLE HANDHOLES
886001-01	DETECTOR LOOP INSTALLATIONS
886006-01	TYPICAL LAYOUT FOR DETECTION LOOPS

MODEL: Default
FILE: Model: P:\pub\lansroom.dwg
I:\projects\143720\CADD\Drawings\143720-std-01-01-01.dgn

REVISED SHEET 12/20/2020 **REV-SEP**

F.A.U. RTE.	SECTION	COUNTY	TOTAL SHEETS	SHEET NO.
1488	2020-054-R5&SW	COOK	31	2
CONTRACT NO. 62L26				
ILLINOIS FED. AID PROJECT				

USER NAME = rostkowskir	DESIGNED - RR	REVISED -
DRAWN - RR	CHECKED - DW	REVISED -
PLOT SCALE = 100.0000 ' / in.	DATE - 10/16/2020	REVISED -
PLOT DATE = 12/21/2020		

**STATE OF ILLINOIS
DEPARTMENT OF TRANSPORTATION**

**INDEX AND STATE STANDARDS
47TH STREET; PLAINFIELD ROAD TO IL ROUTE 43 (HARLEM AVENUE)**

SCALE: - SHEET 1 OF 1 SHEETS STA. - TO STA. -

SUMMARY OF QUANTITIES			TOTAL QUANTITIES	CONSTRUCTION TYPE CODE			
CODE NO	ITEM	UNIT		0005 ROADWAY 80% FED 20% STATE COOK COUNTY	0005 ROADWAY 100% STATE COOK COUNTY		
* 85000200	MAINTENANCE OF EXISTING TRAFFIC SIGNAL	EACH	3	3			
	INSTALLATION						
* 88600600	DETECTOR LOOP REPLACEMENT	FOOT	2810	2810			
* 89502376	REBUILD EXISTING HANDHOLE	EACH	3	3			
X0320050	CONSTRUCTION LAYOUT (SPECIAL)	L SUM	1	1			
X0327120	WEED CONTROL, NATIVE LANDSCAPE ENHANCEMENT	ACRE	1.66	1.66			
X1700062	BRICK PAVER REMOVAL AND REPLACEMENT	SQ FT	50	50			
X2503110	MOWING (SPECIAL)	ACRE	1.66	1.66			
X4400501	COMBINATION CURB AND GUTTER REMOVAL AND REPLACEMENT LESS THAN OR EQUAL TO 10 FEET	FOOT	401	401			
X5537800	STORM SEWERS TO BE CLEANED 12"	FOOT	400		400		
X6030310	FRAMES AND LIDS TO BE ADJUSTED (SPECIAL)	EACH	108	108			
X7030005	TEMPORARY PAVEMENT MARKING REMOVAL	SQ FT	19138	19138			
Z0004562	COMBINATION CONCRETE CURB AND GUTTER REMOVAL AND REPLACEMENT	FOOT	814	814			
Z0018500	DRAINAGE STRUCTURES TO BE CLEANED	EACH	70		70		

SUMMARY OF QUANTITIES			TOTAL QUANTITIES	CONSTRUCTION TYPE CODE			
CODE NO	ITEM	UNIT		0005 ROADWAY 80% FED 20% STATE COOK COUNTY	0005 ROADWAY 100% STATE COOK COUNTY		
Z0030850	TEMPORARY INFORMATION SIGNING	SQ FT	180	180			
Z0033700	LONGITUDINAL JOINT SEALANT	FOOT	37322	37322			
Z0064600	SELECTIVE CLEARING	ACRE	1.6	1.6			
Z0076600	TRAINEES	HOURS	500	500			
Z0076604	TRAINEES - TRAINING PROGRAM GRADUATE	HOURS	500	500			
2500310	INTERSEEDING, CLASS 4	ACRE	1,659	1,659			1

MODEL: Default
 FILE NAME: p:\highway\com.dpt.illinois.gov.PWD\DOT\Documents\10DOT Office\District 1\Projects\143720\CADD\Design\143720-ent-500.dgn

1 REVISOR SHEET 12/21/2020

Ø 0042
* SPECIALTY ITEMS

REV-SEP

USER NAME = rostkowski	DESIGNED - RR	REVISED -
	DRAWN - RR	REVISED -
PLOT SCALE = 100.0000' / in.	CHECKED - DW	REVISED -
PLOT DATE = 10/16/2020	DATE - 10/16/2020	REVISED -

**STATE OF ILLINOIS
DEPARTMENT OF TRANSPORTATION**

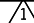
**SUMMARY OF QUANTITIES
47TH STREET; PLAINFIELD ROAD TO IL ROUTE 43 (HARLEM AVENUE)**

F.A.U. RTE. 1488	SECTION 2020-054-R5&SW	COUNTY COOK	TOTAL SHEETS 31	SHEET NO. 6
SCALE: -			SHEET 3 OF 3 SHEETS STA. - TO STA. -	
ILLINOIS FED. AID PROJECT CONTRACT NO. 62L26				

LANDSCAPING OPERATIONS CALENDAR

2021 DATES	DESCRIPTION
FEBRUARY 15 - MARCH 31	SELECTIVE CLEARING
APRIL 1 - APRIL 15	WEED CONTROL, NATIVE LANDSCAPE ENHANCEMENT
MAY 1 - MAY 15	MOWING (SPECIAL)
MAY 15 - JUNE 30	INTERSEEDING, CLASS 4
MAY 15 - JUNE 30	INTERSEEDING, CLASS 5A (MODIFIED)
APRIL 1 - APRIL 15	WEED CONTROL, NATIVE LANDSCAPE ENHANCEMENT
MAY 1 - MAY 15	MOWING (SPECIAL)
MAY 15 - JUNE 30	INTERSEEDING, CLASS 4
MAY 15 - JUNE 30	INTERSEEDING, CLASS 5A (MODIFIED)

MODEL: Default
FILE: 62L26.dwg

USER NAME = rostkowski	DESIGNED - RR	REVISED -  12/29/2020
	DRAWN - RR	REVISED -
PLOT SCALE = 100,0000' / in.	CHECKED - DW	REVISED -
PLOT DATE = 12/21/2020	DATE - 12/29/2020	REVISED -

**STATE OF ILLINOIS
DEPARTMENT OF TRANSPORTATION**

**LANDSCAPING CALENDAR
47TH STREET; PLAINFIELD ROAD TO IL ROUTE 43 (HARLEM AVENUE)**

SCALE: - SHEET 1 OF 1 SHEETS STA. - TO STA. -

F.A.U. RTE.	SECTION	COUNTY	TOTAL SHEETS	SHEET NO.
1488	2020-054-R5&SW	COOK	31	6A
				CONTRACT NO. 62L26
ILLINOIS FED. AID PROJECT				



PROJECT LIMIT
13 + 40.00

47th STREET

PLAINFIELD RD.

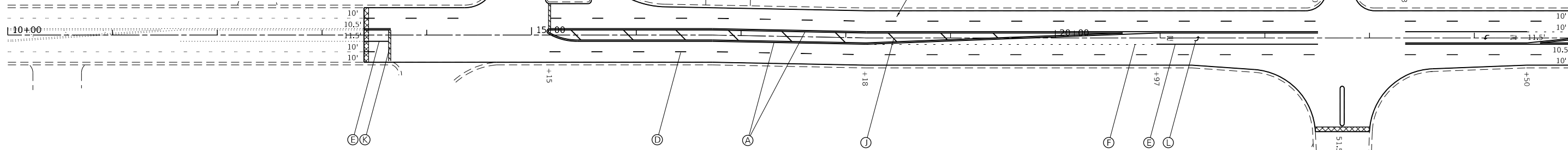
47th STREET

PROPOSED HMA SURFACE REMOVAL, 2.5"
PROPOSED POLYMERIZED HMA SURFACE COURSE, IL-9.5, MIX "E", N70, 1.75"
PROPOSED POLYMERIZED HMA BINDER COURSE, IL-4.75, N50, 0.75"

VERNON AVE.

VERNON AVE.

MATCH LINE STA. 25+00



PAVEMENT MARKING LEGEND

- (A) THERMOPLASTIC PAVEMENT MARKING, YELLOW, DOUBLE 4" SOLID, 11" C-C
- (B) THERMOPLASTIC PAVEMENT MARKING, WHITE, 4" SOLID
- (C) THERMOPLASTIC PAVEMENT MARKING, YELLOW, 4" SOLID
- (D) THERMOPLASTIC PAVEMENT MARKING, WHITE, 4" DASHED, 10' DASH 30' SKIP
- (E) THERMOPLASTIC PAVEMENT MARKING, WHITE, 6" SOLID
- (F) THERMOPLASTIC PAVEMENT MARKING, WHITE, 6" DASHED, 2' DASH, 6' SKIP
- (G) THERMOPLASTIC PAVEMENT MARKING, WHITE, 8" SOLID
- (H) THERMOPLASTIC PAVEMENT MARKING, WHITE, 12" SOLID
- (J) THERMOPLASTIC PAVEMENT MARKING, YELLOW, 12" SOLID
- (K) THERMOPLASTIC PAVEMENT MARKING, WHITE, 24" SOLID
- (L) THERMOPLASTIC PAVEMENT MARKING, LETTERS AND SYMBOLS

PAVEMENT MARKINGS AND RAISED REFLECTIVE PAVEMENT MARKINGS TO BE INSTALLED ACCORDING TO DISTRICT DETAILS TC-11 AND TC-13



CUSTER AVE.

PRAIRIE AVE.

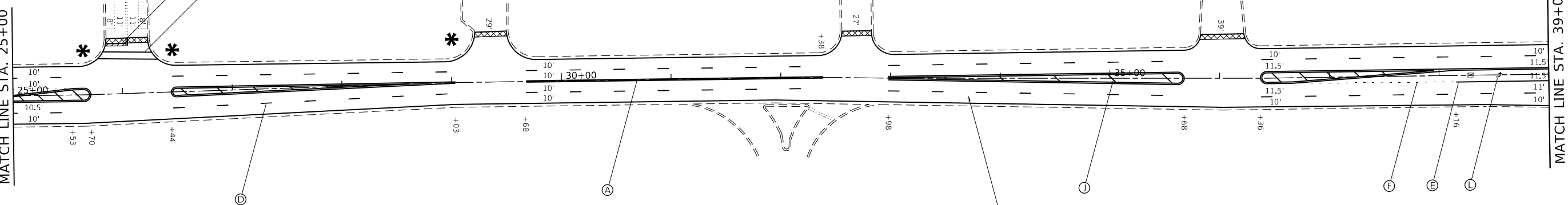
FOREST AVE.

47th STREET

GROVE AVE.

MATCH LINE STA. 25+00

MATCH LINE STA. 39+00



NOTES:

SURFACE REMOVAL - BUTT JOINT (4.5' WIDE, TYP)

PROPOSED ADA SIDEWALK RAMP. SEE ADA DETAIL SHEETS



SELECTIVE CLEARING
MOWING (SPECIAL)
WEED CONTROL, NATIVE LANDSCAPE ENHANCEMENT
INTERSEEDING, CLASS 5A & CLASS 4



MOWING (SPECIAL)
WEED CONTROL, NATIVE LANDSCAPE ENHANCEMENT
INTERSEEDING, CLASS 5A & CLASS 4

PROPOSED HMA SURFACE REMOVAL, 2.5"
PROPOSED POLYMERIZED HMA SURFACE COURSE, IL-9.5, MIX "E", N70, 1.75"
PROPOSED POLYMERIZED HMA BINDER COURSE, IL-4.75, N50, 0.75"

REVISED SHEET 12/21/2020

REV-SEP

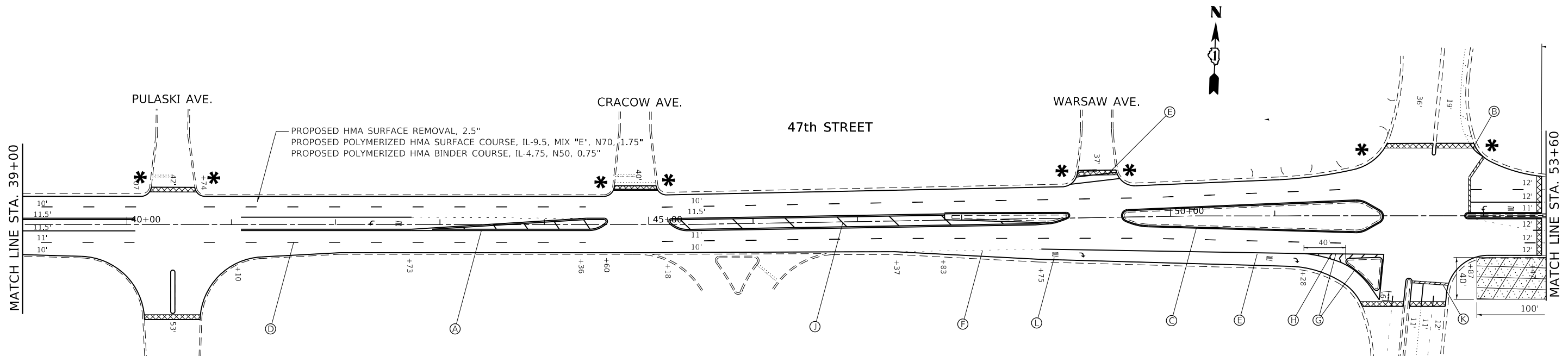
MODEL: Default
FILE: h:\mhc\pub\barroom.dwg
PROJECT: 143720\CD\DATA\Design\143720-sh-c-lbr.dgn

USER NAME = rostkawski	DESIGNED - RR	REVISED -
	DRAWN - RR	REVISED -
PLOT SCALE = 100.0000' / in.	CHECKED - DW	REVISED -
PLOT DATE = 12/21/2020	DATE - 10/16/2020	REVISED -

STATE OF ILLINOIS
DEPARTMENT OF TRANSPORTATION

ROADWAY PLAN
47TH STREET; PLAINFIELD ROAD TO IL ROUTE 43 (HARLEM AVENUE)
SCALE: 1"=50' SHEET 1 OF 5 SHEETS STA. 10+00 TO STA. 39+00

F.A.U. RTE.	SECTION	COUNTY	TOTAL SHEETS	SHEET NO.
1488	2020-054-R5&SW	COOK	31	9
CONTRACT NO. 62L26				
ILLINOIS FED. AID PROJECT				

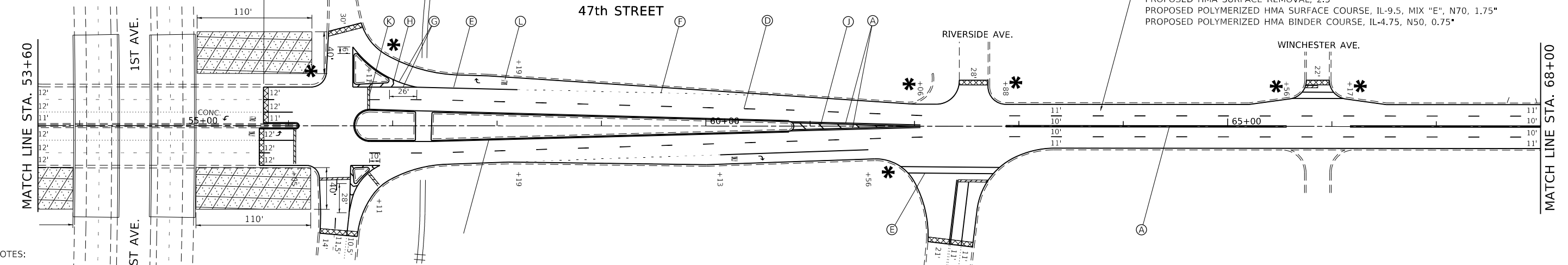


PAVEMENT MARKING LEGEND

- (A) THERMOPLASTIC PAVEMENT MARKING, YELLOW, DOUBLE 4" SOLID, 11" C-C
- (B) THERMOPLASTIC PAVEMENT MARKING, WHITE, 4" SOLID
- (C) THERMOPLASTIC PAVEMENT MARKING, YELLOW, 4" SOLID
- (D) THERMOPLASTIC PAVEMENT MARKING, WHITE, 4" DASHED, 10' DASH 30' SKIP
- (E) THERMOPLASTIC PAVEMENT MARKING, WHITE, 6" SOLID
- (F) THERMOPLASTIC PAVEMENT MARKING, WHITE, 6" DASHED, 2' DASH, 6' SKIP
- (G) THERMOPLASTIC PAVEMENT MARKING, WHITE, 8" SOLID
- (H) THERMOPLASTIC PAVEMENT MARKING, WHITE, 12" SOLID
- (I) THERMOPLASTIC PAVEMENT MARKING, YELLOW, 12" SOLID
- (K) THERMOPLASTIC PAVEMENT MARKING, WHITE, 24" SOLID
- (L) THERMOPLASTIC PAVEMENT MARKING, LETTERS AND SYMBOLS

PAVEMENT MARKINGS AND RAISED REFLECTIVE PAVEMENT MARKINGS TO BE INSTALLED ACCORDING TO DISTRICT DETAILS TC-11 AND TC-13

RESURFACING OMISSION
STATION 53+56 TO STATION 55+76
CLASS C PATCHES ONLY



NOTES:

- SURFACE REMOVAL - BUTT JOINT (4.5' WIDE, TYP)
- PROPOSED ADA SIDEWALK RAMP. SEE ADA DETAIL SHEETS
- SELECTIVE CLEARING MOWING (SPECIAL) WEED CONTROL, NATIVE LANDSCAPE ENHANCEMENT INTERSEEDING, CLASS 5A & CLASS 4
- MOWING (SPECIAL) WEED CONTROL, NATIVE LANDSCAPE ENHANCEMENT INTERSEEDING, CLASS 5A & CLASS 4

MODEL: Default
FILE: Model: P:\pub\baronm.dwg
PROJECT: 143720\CD\Drawings\DOT - Office\District - 1\Project\143720\CD\Drawings\Design\143720-sh-c-lb-01.dwg

USER NAME = rostkawskir	DESIGNED - RR	REVISED -
	DRAWN - RR	REVISED -
PLOT SCALE = 100.0000' / in.	CHECKED - DW	REVISED -
PLOT DATE = 12/21/2020	DATE - 10/16/2020	REVISED -

**STATE OF ILLINOIS
DEPARTMENT OF TRANSPORTATION**

**ROADWAY PLAN
47TH STREET; PLAINFIELD ROAD TO IL ROUTE 43 (HARLEM AVENUE)**

SCALE: 1"=50' SHEET 2 OF 5 SHEETS STA. 39+00 TO STA. 68+00

REVISED SHEET 12/21/2020		REV-SEP
F.A.U. RTE.	SECTION	COUNTY
1488	2020-054-R5&SW	COOK
TOTAL SHEETS		SHEET NO.
31		10
CONTRACT NO. 62L26		
ILLINOIS FED. AID PROJECT		

