

01-15-2021 LETTING ITEM 016

STATE OF ILLINOIS
DEPARTMENT OF TRANSPORTATION

F.A. RTE.	SECTION	COUNTY	TOTAL SHEETS	SHEET NO.
VAR.	2020-231-BP	VARIOUS	35	1
			CONTRACT NO. 62M91	

* 35 + 2 = 37 TOTAL SHEETS

D-91-018-21



PROPOSED HIGHWAY PLANS

VARIOUS ROUTES
VARIOUS LOCATIONS
SECTION: 2020-231-BP
BRIDGE PAINTING
LAKE & MCHENRY COUNTY
C-91-017-21

SEE LOCATION MAPS
SHEET 4

FOR INDEX OF SHEETS, SEE SHEET NO. 2

IMPROVEMENT ARE LOCATED IN THE
VILLAGES OF LIBERTYVILLE, HARVARD,
PARK CITY, AND FOX LAKE

J.U.L.I.E.
JOINT UTILITY LOCATION INFORMATION FOR EXCAVATORS
1-800-892-0123
OR 811

PROJECT MANAGER: J. ALAIN MIDY (847) 221-3056

CONTRACT NO. 62M91

STATE OF ILLINOIS
DEPARTMENT OF TRANSPORTATION

SUBMITTED October 6, 2020
Anthony J. D'Amico / OES
REGIONAL ENGINEER

December 4, 2020
Scott A. Etkin
ENGINEER OF DESIGN AND ENVIRONMENT

December 4, 2020
James J. Guerin
DIRECTOR OF HIGHWAYS PROJECT IMPLEMENTATION

PRINTED BY THE AUTHORITY
OF THE STATE OF ILLINOIS

INDEX OF SHEETS

1. TITLE SHEET
2. INDEX OF SHEETS AND GENERAL NOTES
3. SUMMARY OF QUANTITIES
4. LOCATION MAPS
- 5-7. LOCATION 1 (SN 049-0019)
- 8-11. LOCATION 2 (SN 049-0111)
- 12-17. LOCATION 3 (SN 049-0127)
- 18-24. LOCATION 4 (SN 049-0167)
- 25-30. LOCATION 5 (SN 056-0007)
31. FREEWAY ENTRANCE AND EXISTING RAMP CLOSURE DETAILS (TC-08)
32. TRAFFIC CONTROL DETAILS FOR FREEWAY SINGLE AND MULTI-LANE WEAVE (TC-09)
33. TRAFFIC CONTROL AND PROTECTION FOR SIDE ROADS, INTERSECTIONS, AND DRIVEWAYS (TC-10)
34. TRAFFIC CONTROL DETAILS FOR FREEWAY SHOULDER CLOSURES AND PARTIAL RAMP CLOSURES (TC-17)
35. ARTERIAL ROAD INFORMATION SIGN (TC-22)

STATE HIGHWAY STANDARDS

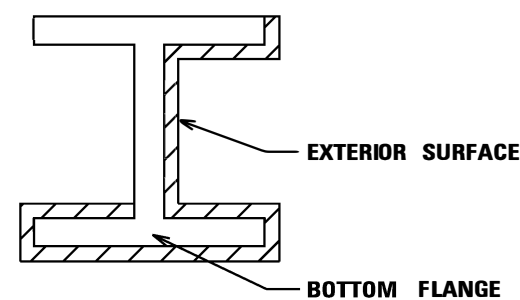
STD NO.	DESCRIPTION
701101-05	OFF-ROAD OPERATIONS, MULTILANE, 15'-24" FROM PAVEMENT EDGE
701401-12	LANE CLOSURE, MULTILANE, AT ENTRANCE OR EXIT RAMP FOR SPEED >45
701411-09	LANE CLOSURE, MULTILANE, AT ENTRANCE OR EXIT RAMP, FOR SPEEDS > 45 MPH
701801-06	SIDEWALK, CORNER, OR CROSSWALK CLOSURE
701901-08	TRAFFIC CONTROL DEVICES

GENERAL NOTES

1. BEFORE STARTING ANY EXCAVATION, THE CONTRACTOR SHALL CALL "J.U.L.I.E." (800) 892-0123 OR 811 FOR FIELD LOCATIONS OF BURIED ELECTRIC, TELEPHONE AND GAS UTILITIES. (48 HOUR NOTIFICATION IS REQUIRED).
2. THE CONTRACTOR SHALL COORDINATE CONSTRUCTION ACTIVITIES WITH UTILITY COMPANIES, THE VILLAGES OF LIBERTYVILLE, FOX LAKE AND THE CITIES OF HARVARD, AND PARK CITY
3. IT SHALL BE THE CONTRACTOR'S RESPONSIBILITY TO PROTECT AND PRESERVE THE EXISTING BRIDGE LIGHTING AT ANY LOCATIONS THAT LIGHTING IS ENCOUNTERED ADJACENT TO AN AREA TO BE CLEANED AND PAINTED.
4. IT SHALL BE THE CONTRACTOR'S RESPONSIBILITY TO VERIFY ALL THE DIMENSIONS & CONDITIONS EXISTING IN THE FIELD PRIOR TO CONSTRUCTION & ORDERING OF MATERIALS.
5. THE CONTRACTOR WILL NOT BE ALLOWED TO SET UP A YARD OR FIELD OFFICE ON STATE PROPERTY WITHOUT WRITTEN PERMISSION FROM THE DEPARTMENT.
6. THESE PLANS HAVE BEEN PREPARED FROM NOTES RECEIVED FROM THE BUREAU OF MAINTENANCE BRIDGE INSPECTORS.
7. THE CONTRACTOR SHALL CONTACT THE DISTRICT ONE TRAFFIC CONTROL SUPERVISOR AT (847) 705-4470 FOR ARTERIALS AND (847) 705-4151 FOR EXPRESSWAYS AT MINIMUM OF 72 HOURS IN ADVANCE OF BEGINNING WORK.
8. THE CONTRACTOR SHALL BE REQUIRED TO PROVIDE ACCESS TO ABUTTING PROPERTY AT ALL TIMES DURING THE CONSTRUCTION OF THIS PROJECT.
9. THE "ARTERIAL ROAD INFORMATION SIGN (TC-22)" IS APPLICABLE ONLY TO ARTERIAL ROADS AND SHALL NOT BE APPLIED TO EXPRESSWAYS.
10. PLAN DIMENSIONS AND DETAILS RELATIVE TO EXISTING PLANS ARE SUBJECT TO NOMINAL CONSTRUCTION VARIATIONS. THE CONTRACTOR SHALL FIELD VERIFY EXISTING DIMENSIONS AND DETAILS AFFECTING NEW CONSTRUCTION AND MAKE NECESSARY APPROVED ADJUSTMENTS PRIOR TO CONSTRUCTION OR ORDERING OF MATERIALS. SUCH VARIATIONS SHALL NOT BE CAUSED FOR ADDITIONAL COMPENSATION FOR A CHANGE IN SCOPE OF THE WORK. HOWEVER, THE CONTRACTOR WILL BE PAID FOR THE QUANTITY ACTUALLY FURNISHED BASED AT THE UNIT PRICE BID FOR THE WORK.
11. DO NOT SCALE PLANS FOR CONSTRUCTION DIMENSIONS.
12. THE CONTRACTOR SHALL REQUEST AND GAIN APPROVAL FROM THE ILLINOIS DEPARTMENT OF TRANSPORTATION'S EXPRESSWAY TRAFFIC OPERATIONS ENGINEER AT (847-705-4151 OR 4155) OR WWW.IDOTLCS.COM AT LEAST (24) HOURS IN ADVANCE OF ALL DAILY LANE, AND RAMP AND SHOULDER CLOSURES.
13. THE CONTRACTOR SHALL TAKE NECESSARY PRECAUTIONS TO INSURE THAT NO DEBRIS WILL ENDANGER OR INTERFERE WITH TRAFFIC ON THE ROADWAY BENEATH THE BRIDGE ACCORDING TO ARTICLE 107.09 OF THE STANDARD SPECIFICATIONS. THIS WORK WILL NOT BE PAID FOR SEPARATELY, BUT SHALL BE INCLUDED IN THE CONTRACT UNIT PRICE FOR THE APPROPRIATE PAY ITEM INVOLVED AND NO ADDITIONAL COMPENSATION WILL BE ALLOWED.

GENERAL PAINT NOTES

1. CLEANING AND PAINTING OF THE EXISTING STRUCTURAL STEEL SHALL BE AS SPECIFIED IN THE SPECIAL PROVISION FOR "CLEANING AND PAINTING EXISTING STEEL STRUCTURES".
2. LOCATION 3 - SN 049-0127, LOCATION 1 (SN 049-0019)
ALL BEAMS, BEARING AND OTHER STRUCTURAL STEEL SHALL BE CLEANED PER NEAR WHITE BLAS CLEANING SSPC-SP10. THE AREAS DESIGNATED SHALL BE PAINTED ACCORDING TO THE REQUIREMENTS OF PAINT SYSTEM 1 -02/E/U. THE COLOR OF THE FINAL FINISH COAT FOR ALL INTERIOR STEEL SURFACES SHALL BE GRAY, MUNSELL NO 5B 7/1. THE COLOR OF THE FINAL FINISH COAT FOR EXTERIOR AND BOTTOM FLANGE OF THE FASCIA BEAMS SHALL BE REDDISH BROWN, MUNSELL NO. 2.5YR 3/4. LOCATION 1 (SN 049-0019) TO HAVE COMPLETE PAINT REMOVAL AND REPLACEMENT.
3. TWO (2) AIR MONITORS FOR LOCATION 2 AND ONE (1) AT LOCATIONS 1 AND 3 WILL BE REQUIRED TO MONITOR ABRASIVE BLASTING OPERATIONS. SEE SPECIAL PROVISIONS FOR "CONTAINMENT AND DISPOSAL OF LEAD PAINT CLEANING RESIDUES" AND "CONTAINMENT AND DISPOSAL OF NON-LEAD PAINT CLEANING RESIDUES".
4. ALL ITEMS (SUCH AS, BUT NOT LIMITED TO: CONDUITS, BRACKETS AND DECK DRAINS) ATTACHED TO OUTSIDE OF THE FASCIA BEAMS SHOULD BE CLEANED AND PAINTED.
5. LOCATION 2 (SN 049-0111), 4 (SN 049-0167), AND 5 (SN 056-0007):
ALL BEAMS, BEARINGS AND OTHER STRUCTURAL STEEL WITHIN 5 FEET (MEASURED ALONG THE BEAM) OF EITHER SIDE OF ALL DECK JOINTS, SHALL BE CLEANED PER NEAR WHITE BLAST CLEANING SSPC-SP10. THE EXTERIOR SURFACES AND TOP AND BOTTOM OF THE BOTTOM FLANGE OF THE FASCIA BEAMS (SEE FIGURE 1) SHALL BE CLEANED PER NEAR WHITE BLAST CLEANING SSPC-SP10.
6. LOCATION 4 (SN 049-0167): ALONG WITH THE STEEL BEAM PORTIONS TO BE PAINTED, THIS INCLUDES PAINTING THE PPCI BEAM BEARINGS AT BOTH ABUTMENTS, PIER 8 AND 10.



FASCIA BEAM PAINTING DETAIL

FIGURE 1

SURFACE TO BE CLEANED AND PAINTED

MODEL: Default
 FILE NAME: p:\gis\workroom.dwg
 PROJECT: 2020-231-BP
 SHEET: 35 OF 35
 DATE: 10/8/2020

USER NAME = somooi	DESIGNED -	REVISED -
	DRAWN -	REVISED -
PLOT SCALE = 100.0000' / in.	CHECKED -	REVISED -
PLOT DATE = 10/8/2020	DATE -	REVISED -

**STATE OF ILLINOIS
DEPARTMENT OF TRANSPORTATION**

**INDEX OF SHEETS, STATE HIGHWAY STANDARDS,
GENERAL NOTES, GENERAL PAINT NOTES**

SCALE: SHEET OF SHEETS STA. TO STA.

F.A. RTE.	SECTION	COUNTY	TOTAL SHEETS	SHEET NO.
VAR.	2020-231-BP	VARIOUS	35	2
			CONTRACT NO. 62M91	
ILLINOIS F.E.D AID PROJECT				

REV-SEP

SUMMARY OF QUANTITIES			URBAN TOTAL QUANTITIES	CONSTRUCTION TYPE CODE					SUMMARY OF QUANTITIES			URBAN TOTAL QUANTITIES	CONSTRUCTION TYPE CODE				
CODE NO	ITEM	UNIT		100% STATE 0013 BRIDGE 1 049-0019	100% STATE 0013 BRIDGE 2 049-0111	100% STATE 0013 BRIDGE 3 049-0127	100% STATE 0013 BRIDGE 4 049-0167	100% STATE 0013 BRIDGE 5 056-0007	CODE NO	ITEM	UNIT		100% STATE 0013 BRIDGE 1 049-0019	100% STATE 0013 BRIDGE 2 049-0111	100% STATE 0013 BRIDGE 3 049-0127	100% STATE 0013 BRIDGE 4 049-0167	100% STATE 0013 BRIDGE 5 056-0007
67000400	ENGINEER'S FIELD OFFICE, TYPE A	CAL MO	10	2	2	2	2	2									
67100100	MOBILIZATION	L SUM	1	0.2	0.2	0.2	0.2	0.2									
70100310	TRAFFIC CONTROL AND PROTECTION, STANDARD 701421	L SUM	1		1												
70102620	TRAFFIC CONTROL AND PROTECTION, STANDARD 701501	L SUM	1					1									
70102622	TRAFFIC CONTROL AND PROTECTION, STANDARD 701502	L SUM	1					1									
70102625	TRAFFIC CONTROL AND PROTECTION, STANDARD 701606	L SUM	1		0.5	0.5											
70102632	TRAFFIC CONTROL AND PROTECTION, STANDARD 701602	L SUM	1	0.5			0.5										
70102640	TRAFFIC CONTROL AND PROTECTION, STANDARD 701801	L SUM	1	0.25			0.25	0.5									
X5060601	CONTAINMENT AND DISPOSAL OF NON-LEAD PAINT CLEANING RESIDUES NO. 1	L SUM	1	1													
X5060602	CONTAINMENT AND DISPOSAL OF NON-LEAD PAINT CLEANING RESIDUES NO. 2	L SUM	1				1										
X5060603	CONTAINMENT AND DISPOSAL OF NON-LEAD PAINT CLEANING RESIDUES NO. 3	L SUM	1					1									
Z0007104	CONTAINMENT AND DISPOSAL OF LEAD PAINT CLEANING RESIDUES NO. 4	L SUM	1								1						
Z0007105	CONTAINMENT AND DISPOSAL OF LEAD PAINT CLEANING RESIDUES NO. 5	L SUM	1								1						
Z0010501	CLEANING AND PAINTING STEEL BRIDGE NO. 1	L SUM	1								1						
Z0010502	CLEANING AND PAINTING STEEL BRIDGE NO. 2	L SUM	1								1						
Z0010503	CLEANING AND PAINTING STEEL BRIDGE NO. 3	L SUM	1									1					
Z0010504	CLEANING AND PAINTING STEEL BRIDGE NO. 4	L SUM	1										1				
Z0010505	CLEANING AND PAINTING STEEL BRIDGE NO. 5	L SUM	1											1			
Z0030850	TEMPORARY INFORMATION SIGNING	SO FT	257								51.4	51.4	51.4	51.4	51.4		
Z0048665	RAILROAD PROTECTIVE LIABILITY INSURANCE	L SUM	1										0.5		0.5		
70200100	NIGHTTIME WORKZONE LIGHTING	L SUM	1								1						

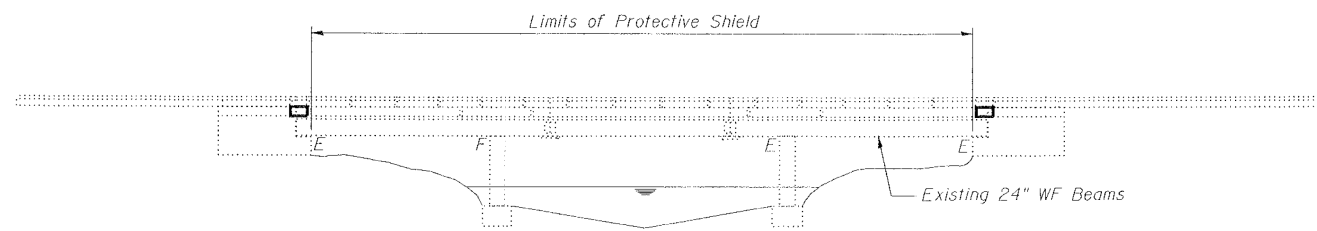
REV-SEP

BENCH MARK:

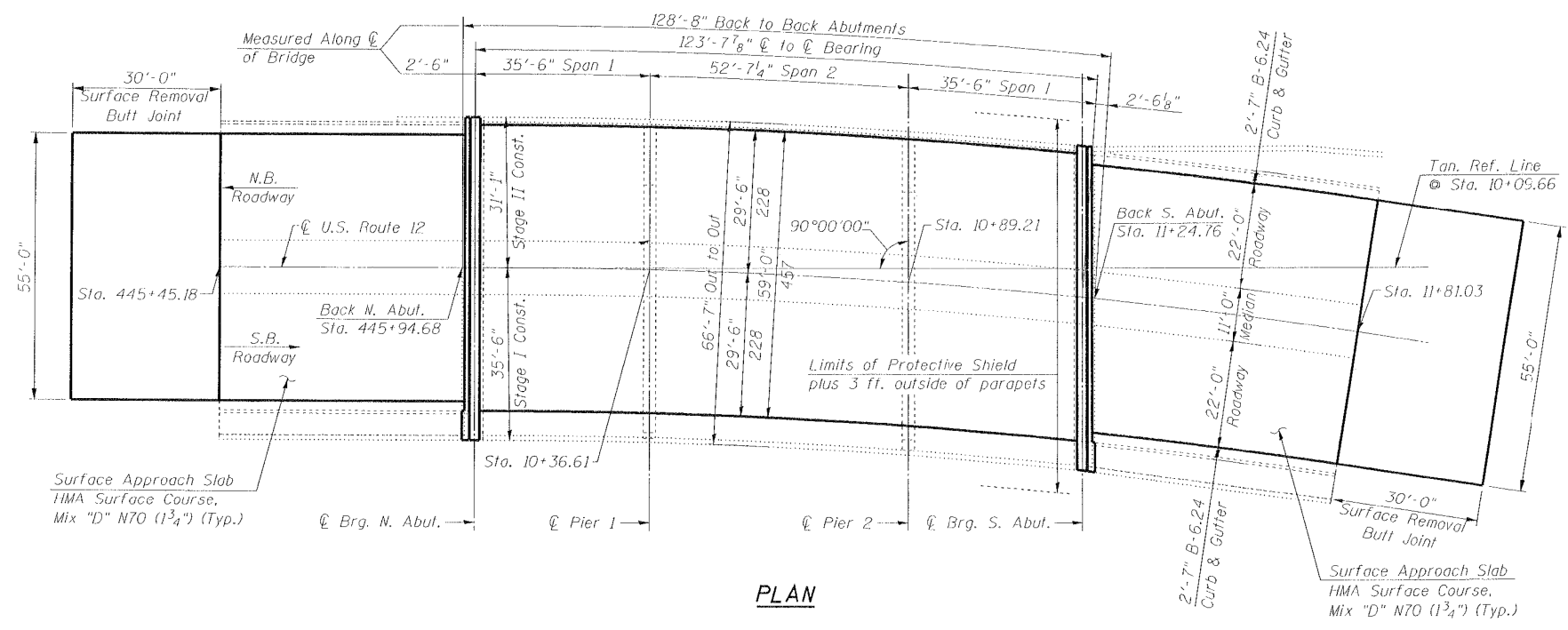
B.M. EE-304. Elev. 748.25 Square cut top of wing wall S.E. corner of East Road Bridge over Pistakee Lake. Station 11+35.00 23' LT.

EXISTING STRUCTURE:

The existing Bridge has an overall length of 128'-8". The Superstructure consists of a reinforced concrete deck composite with 24" steel wide flange beams. There are three spans 35'-6", 52'-7 1/4", and 35'-6 5/8". The Superstructure is supported by two reinforced concrete piers and two reinforced concrete abutments.



ELEVATION



PLAN

FOR INFORMATION ONLY

MODEL: Default
FILE: \\blm\c:\pub\blm\room\dat\illinois\pwr\pwr\DOT\Documents\DOT - Office\blm\blm\1\Projects\101821\CADD\Drawings\Design\101821-xx-xx-xx-xx-xx.dgn

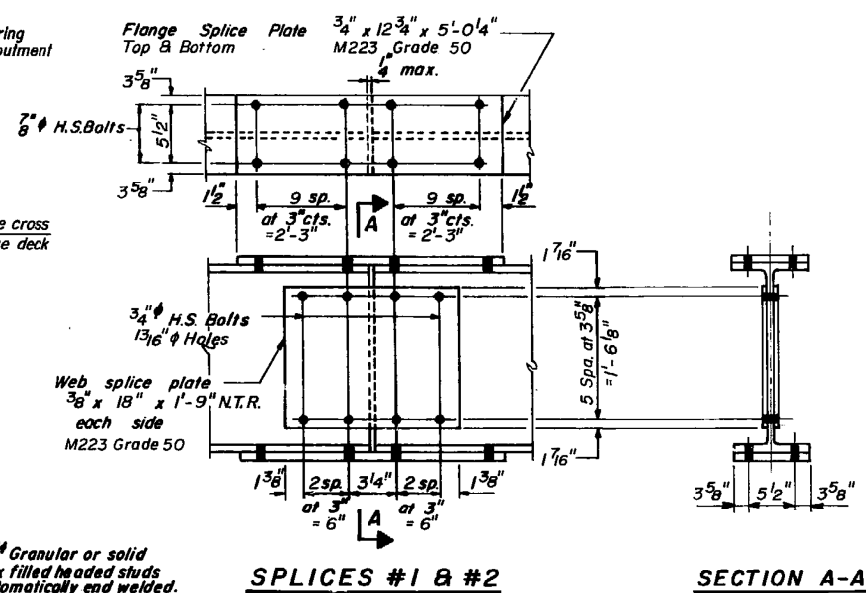
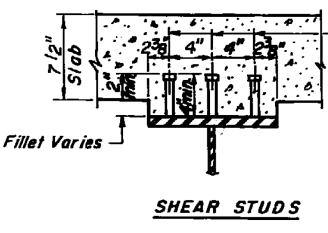
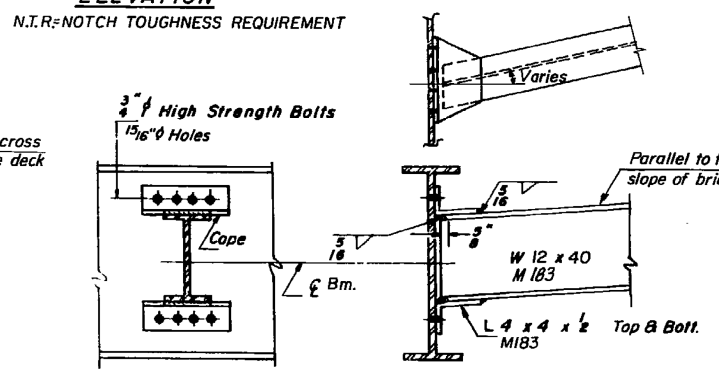
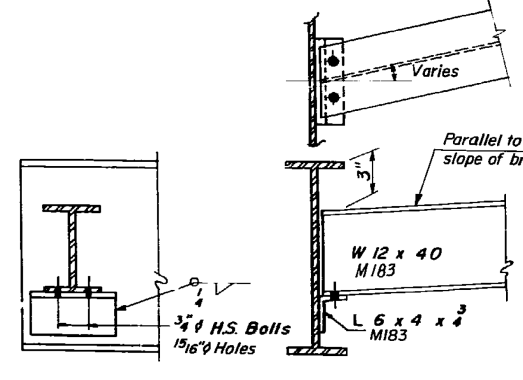
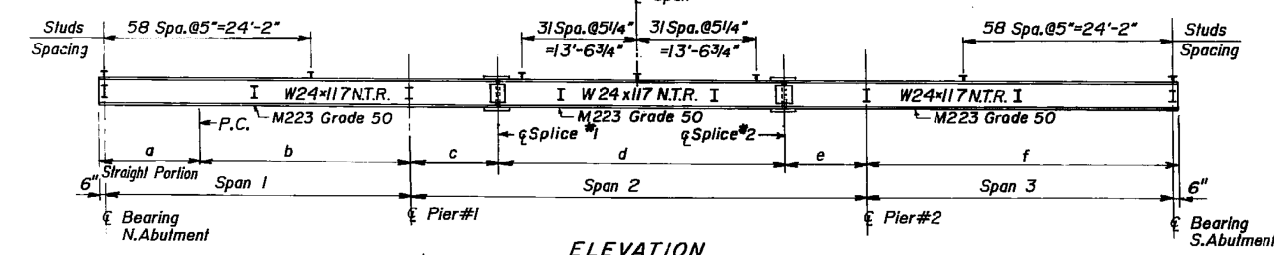
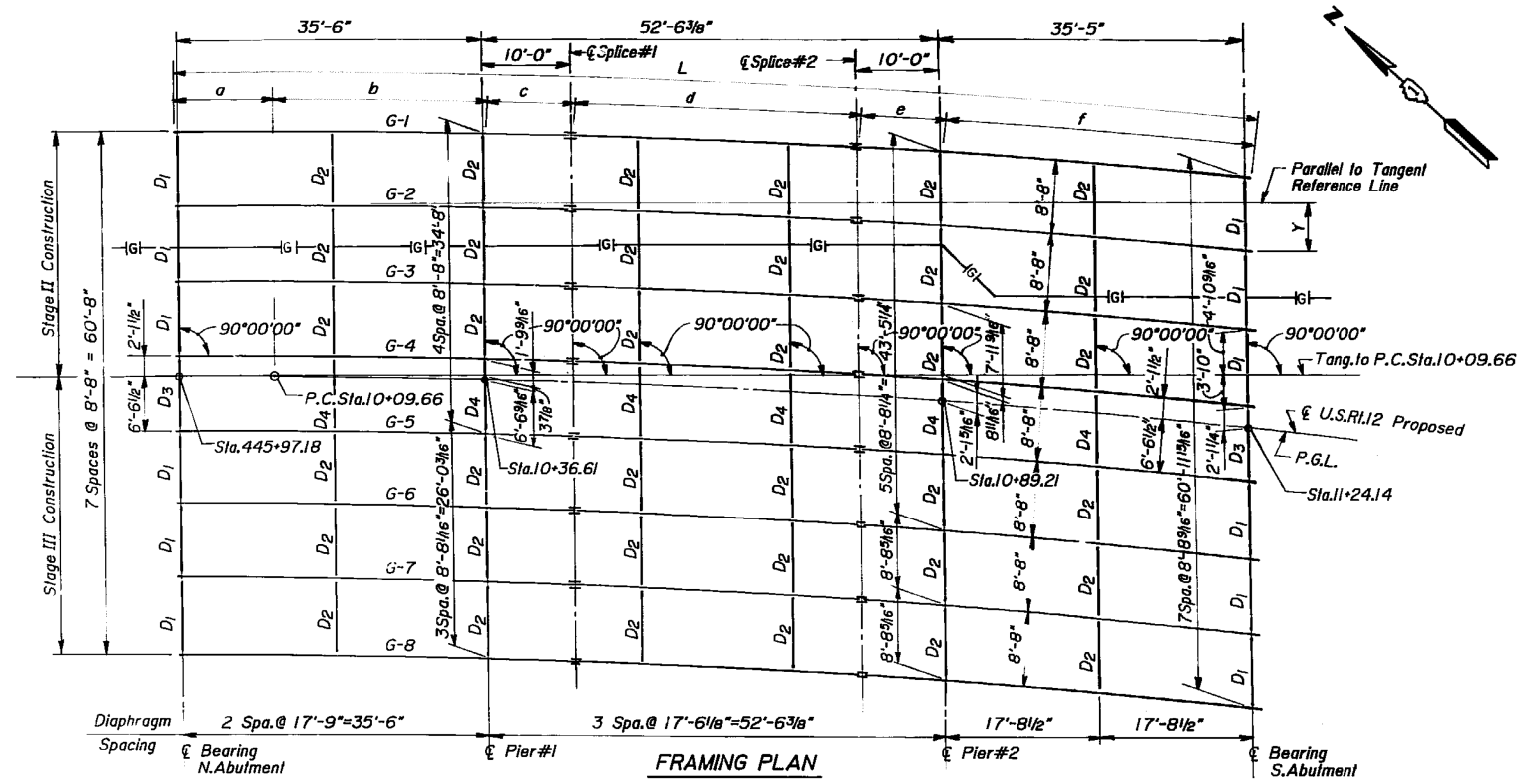
USER NAME = somool	DESIGNED -	REVISED -
	DRAWN -	REVISED -
PLOT SCALE = 100,0000' / in.	CHECKED -	REVISED -
PLOT DATE = 10/8/2020	DATE -	REVISED -

STATE OF ILLINOIS
DEPARTMENT OF TRANSPORTATION

LOCATION 1) SN 049-0019
GENERAL PLAN AND ELEVATION

SCALE: SHEET OF SHEETS STA. TO STA.

F.A. RTE.	SECTION	COUNTY	TOTAL SHEETS	SHEET NO.
	2020-231-BP	VARIOUS	35	5
			CONTRACT NO. 62M91	
		ILLINOIS	FED. AID PROJECT	



Note: Two hardened washers shall be required over all 1 5/16" holes in diaphragm connections.

FOR INFORMATION ONLY

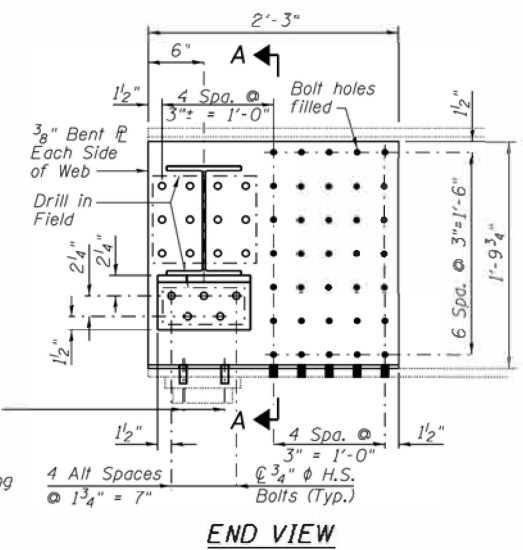
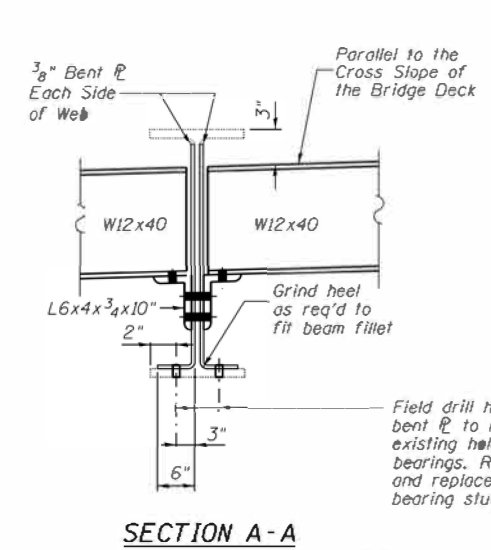
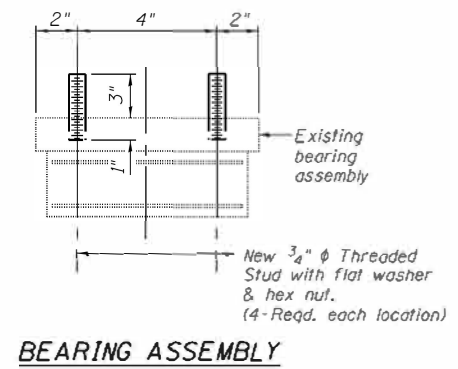
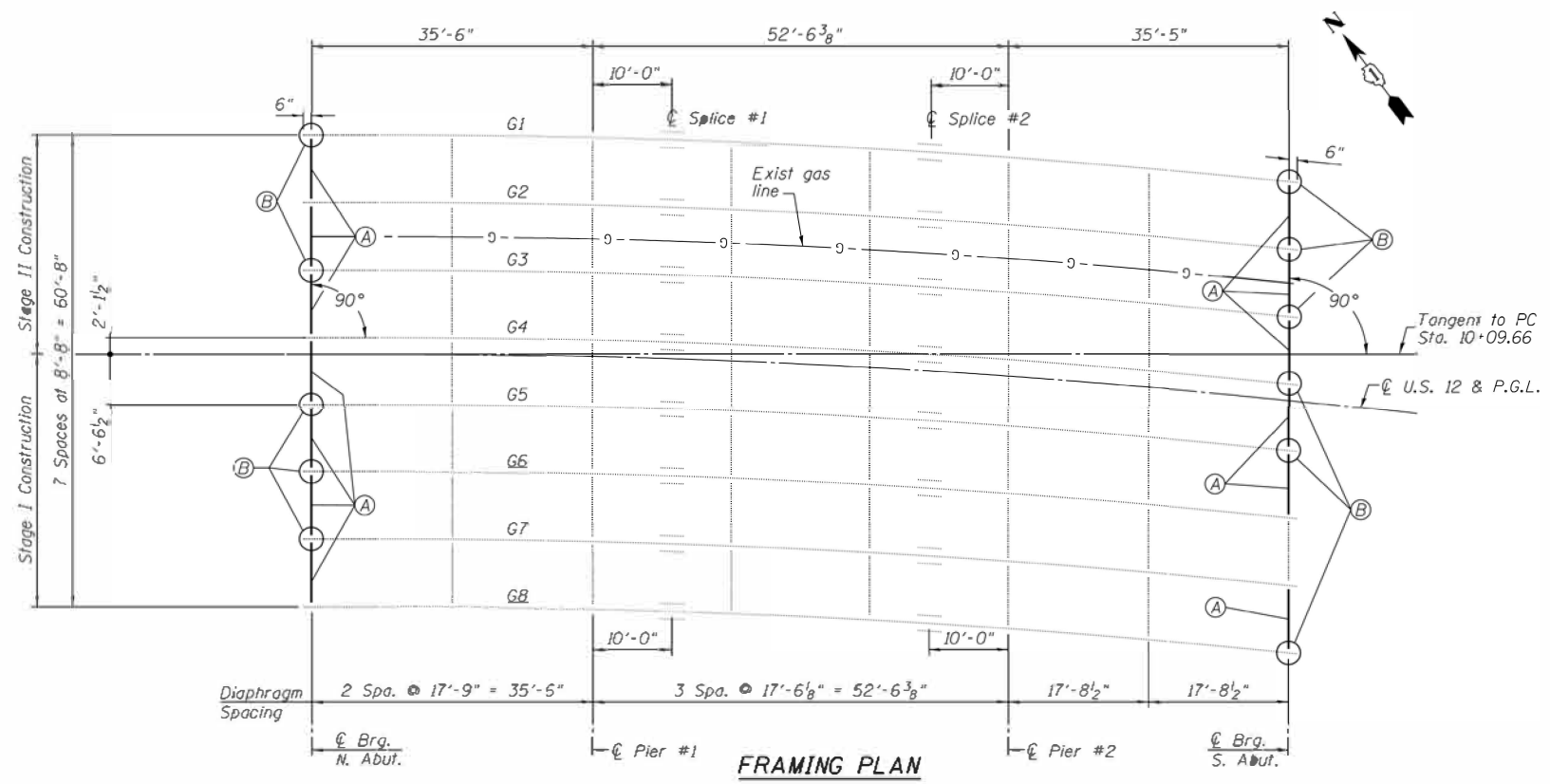
MODEL: Default
 FILE: Abutment_Plan.dwg
 PROJECT: 2020-231-BP
 DATE: 10/8/2020

USER NAME = somoo	DESIGNED -	REVISED -
PLOT SCALE = 100,0000' / in.	DRAWN -	REVISED -
PLOT DATE = 10/8/2020	CHECKED -	REVISED -
	DATE -	REVISED -

STATE OF ILLINOIS
DEPARTMENT OF TRANSPORTATION

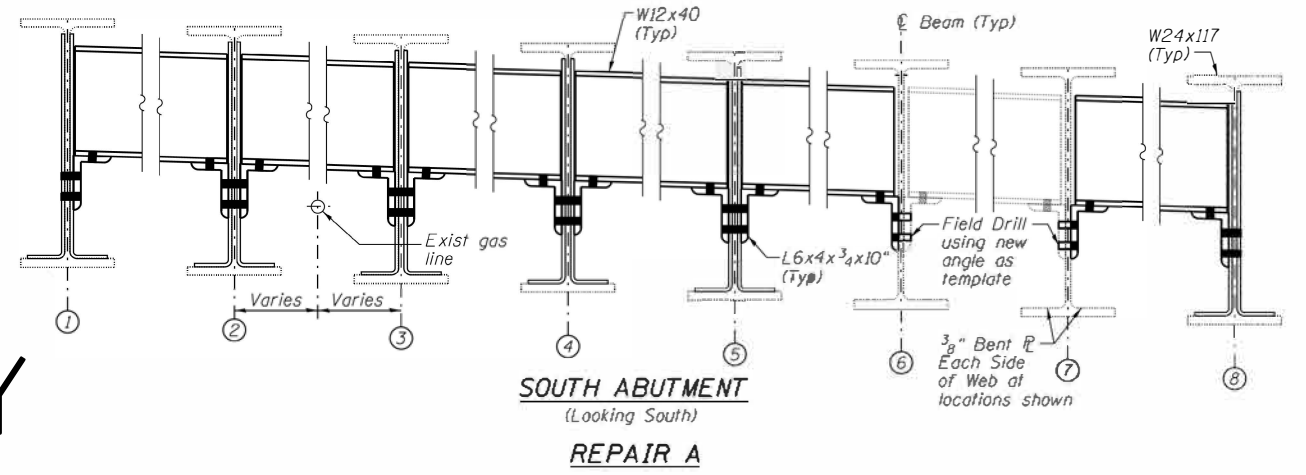
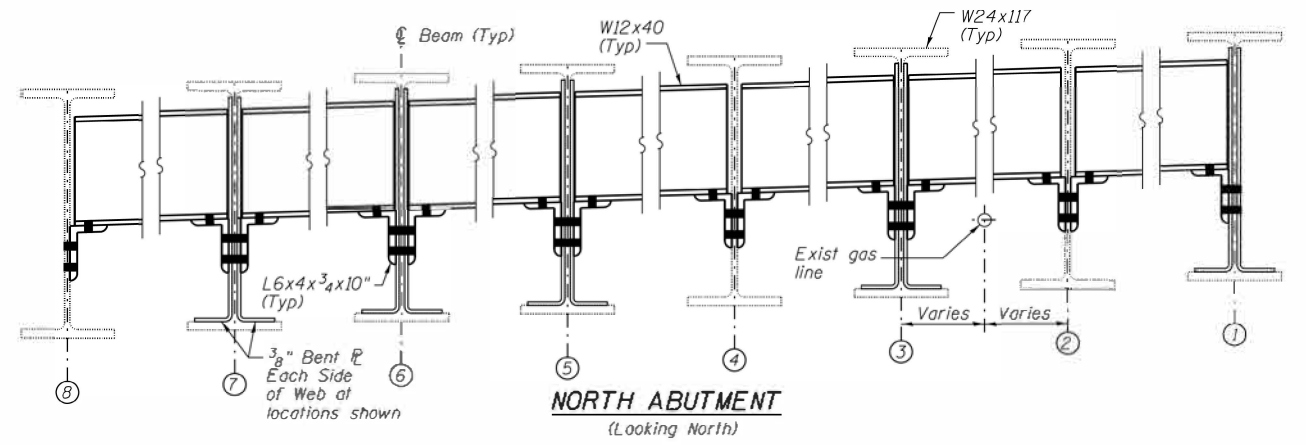
LOCATION 1) SN 049-0019	F.A. RTE.	SECTION	COUNTY	TOTAL SHEETS	SHEET NO.
FRAMING PLAN AND BEAM DETAILS		2020-231-BP	VARIOUS	35	6
SCALE:	SHEET	OF	SHEETS	STA.	TO STA.

CONTRACT NO. 62M91	
ILLINOIS	FED. AID PROJECT



Note:
Remove existing threaded rods that connect beam to bearing. Install new longer threaded rods so as to bolt repair plates.

REPAIR B



FOR INFORMATION ONLY

MODEL: Default
 FILE NAME: P:\P\DOT\Documents\DOT - Offices\District 1\Projects\101821\CADD\Drawings\101821-SS-Steel-Repair.dgn
 PLOT SCALE = 100.0000' / in.
 PLOT DATE = 10/30/2020

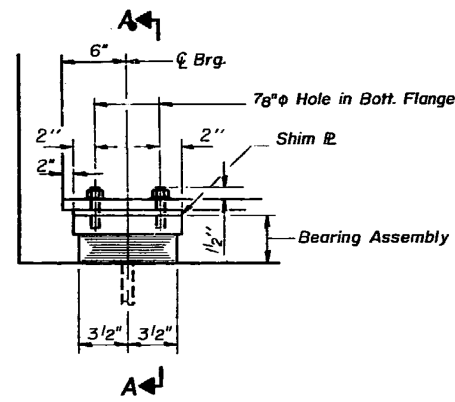
USER NAME = som001	DESIGNED -	REVISED -
	DRAWN -	REVISED -
	CHECKED -	REVISED -
	DATE -	REVISED -

**STATE OF ILLINOIS
DEPARTMENT OF TRANSPORTATION**

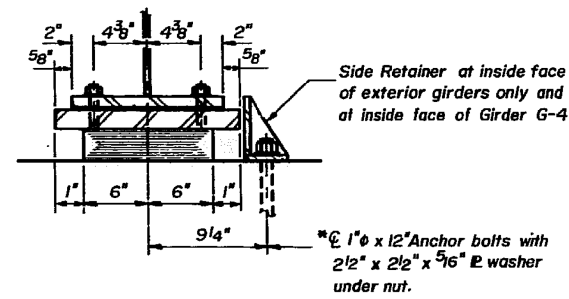
**LOCATION 1) SN 049-0019
STRUCTURAL STEEL**

SCALE: SHEET OF SHEETS STA. TO STA.

F.A. RTE.	SECTION	COUNTY	TOTAL SHEETS	SHEET NO.
	2020-231-BP	VARIOUS	35	6a
CONTRACT NO. 62M91				
ILLINOIS FED. AID PROJECT				



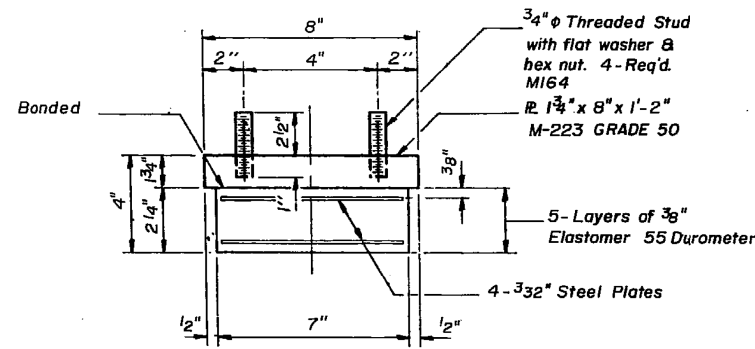
ELEVATION AT ABUT.



SECTION A-A

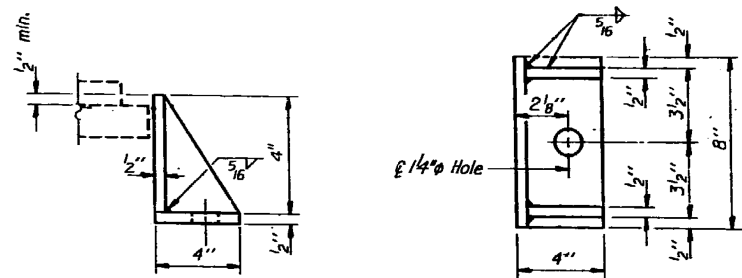
TYPE I ELASTOMERIC EXP. BRG.

16 Required



BEARING ASSEMBLY

NOTE: Shim plates shall not be placed under Bearing Assembly.



SIDE RETAINER

6 Required M183
Equivalent rolled angle with stiffeners will be allowed in lieu of welded plates.

FOR INFORMATION ONLY

MODEL: Default
 FILE: \\nrcs\p\pub\baroncom.d\at\illinois.gov\PI\DOT\Documents\IBDOT_Offices\District 1\Projects\2101821\CAD\Drawings\Design\1\xxxxxx-repair.dgn

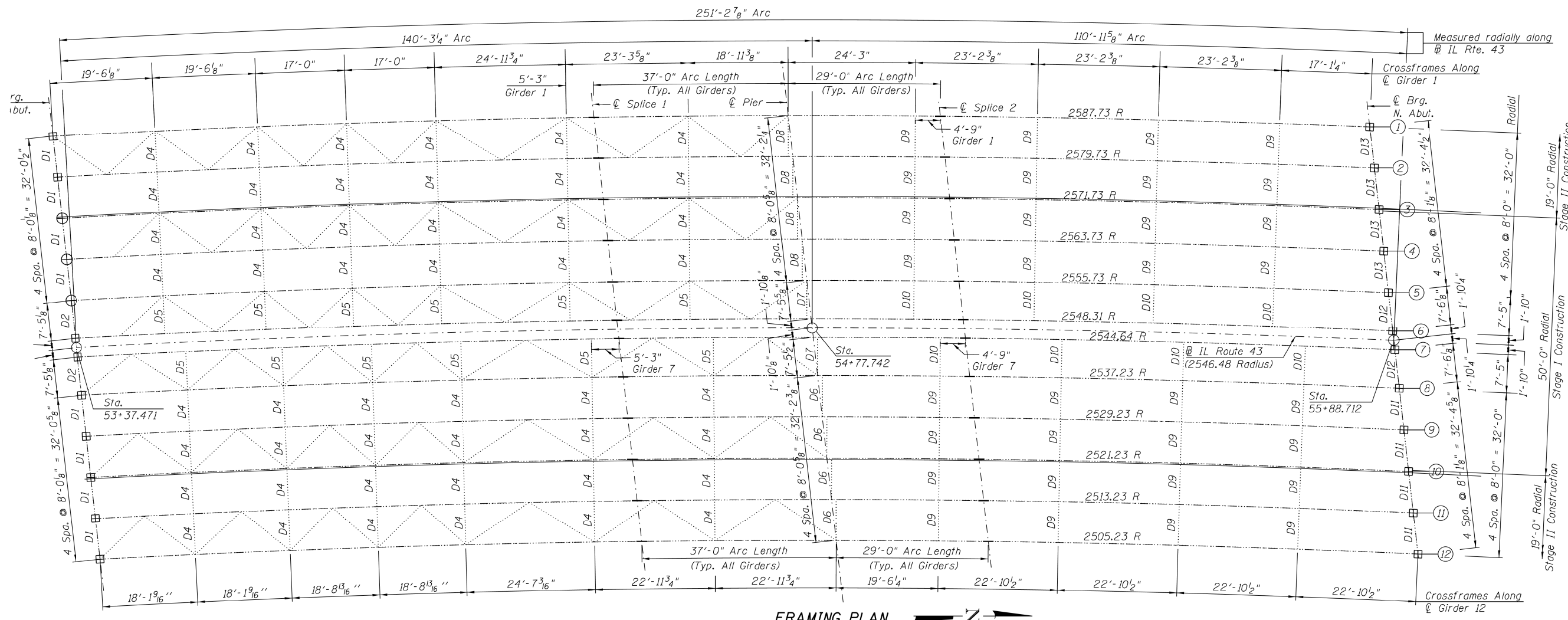
USER NAME = somool	DESIGNED -	REVISED -
PLOT SCALE = 100.0000' / in.	DRAWN -	REVISED -
PLOT DATE = 10/8/2020	CHECKED -	REVISED -
	DATE -	REVISED -

STATE OF ILLINOIS
DEPARTMENT OF TRANSPORTATION

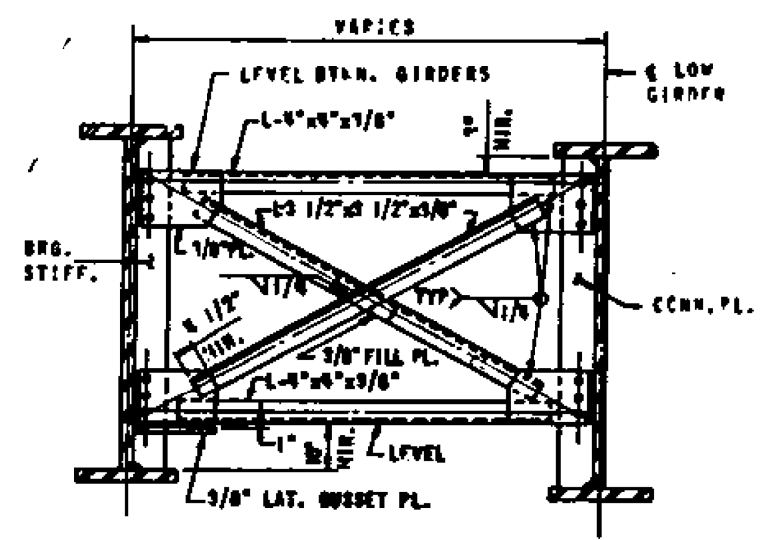
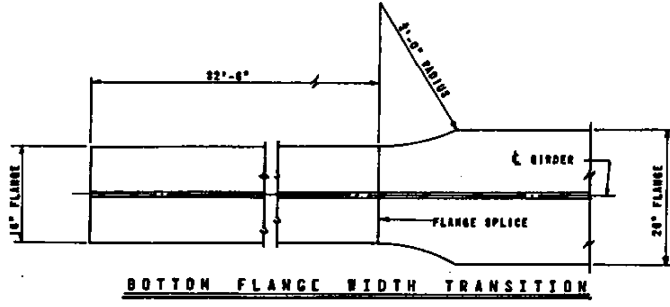
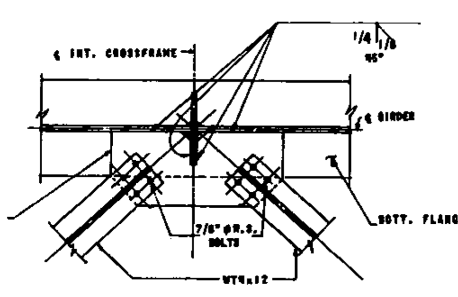
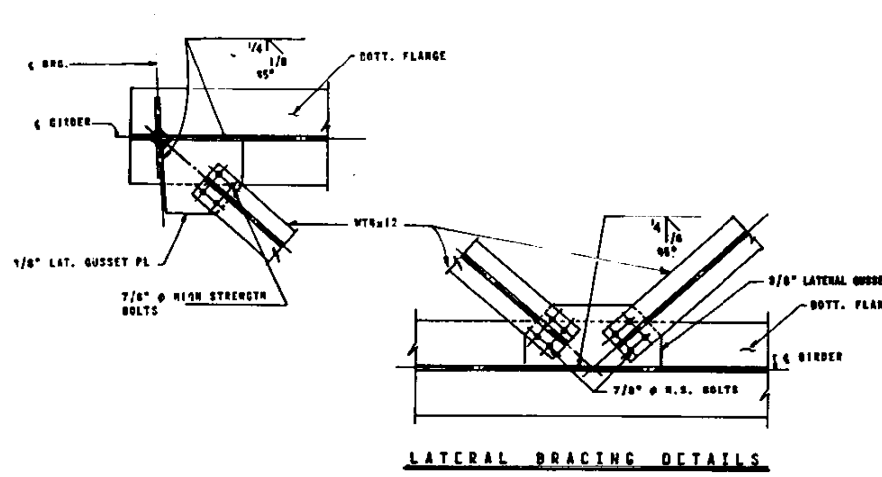
LOCATION 1) SN 049-0019
BEARING DETAILS

SCALE: SHEET OF SHEETS STA. TO STA.

F.A. RTE.	SECTION	COUNTY	TOTAL SHEETS	SHEET NO.
	2020-231-BP	VARIOUS	35	7
			CONTRACT NO. 62M91	
			ILLINOIS FED. AID PROJECT	



FRAMING PLAN



TYPE D6, D7 & D8 CROSSFRAME (TYP. @ PIER)

FOR INFORMATION ONLY

MODEL: Default
 FILE: Model2 - ProjectRoom.dwg
 PROJECT: 2020-231-BP
 PROJECT NO.: 2020-231-BP
 SHEET NO.: 9
 CONTRACT NO.: 62M91

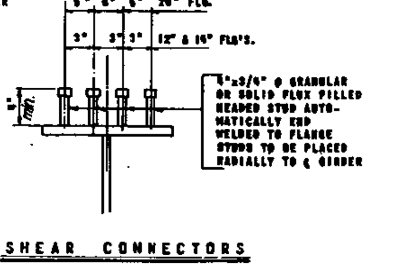
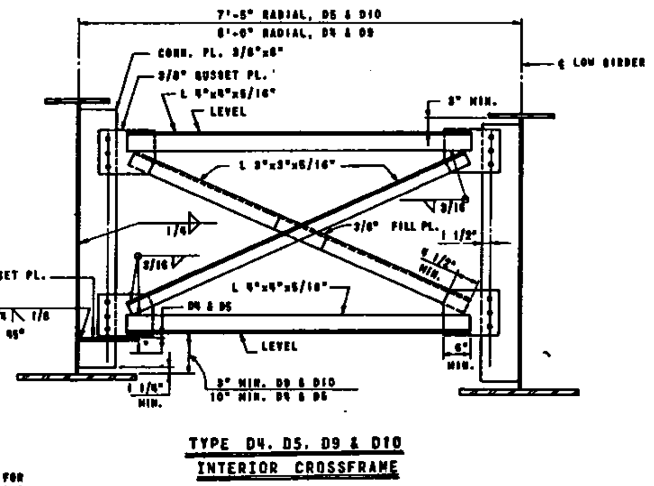
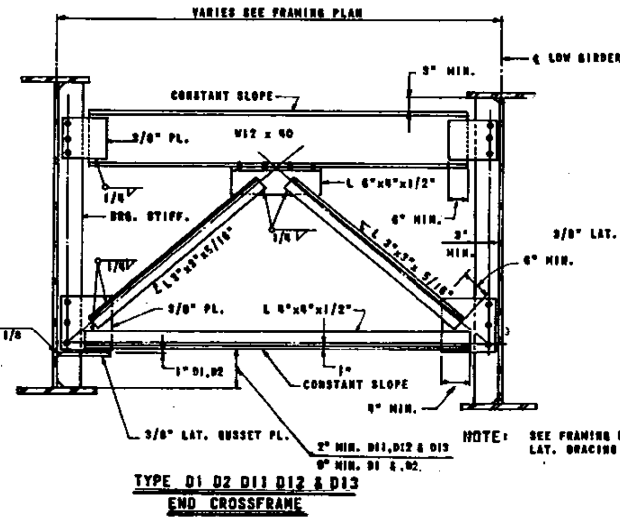
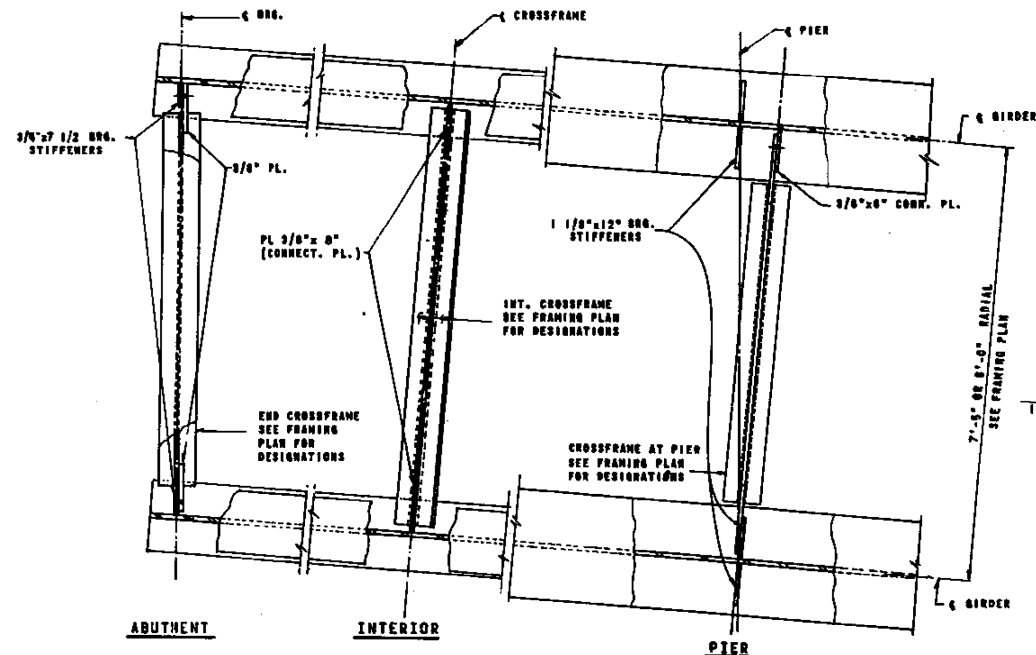
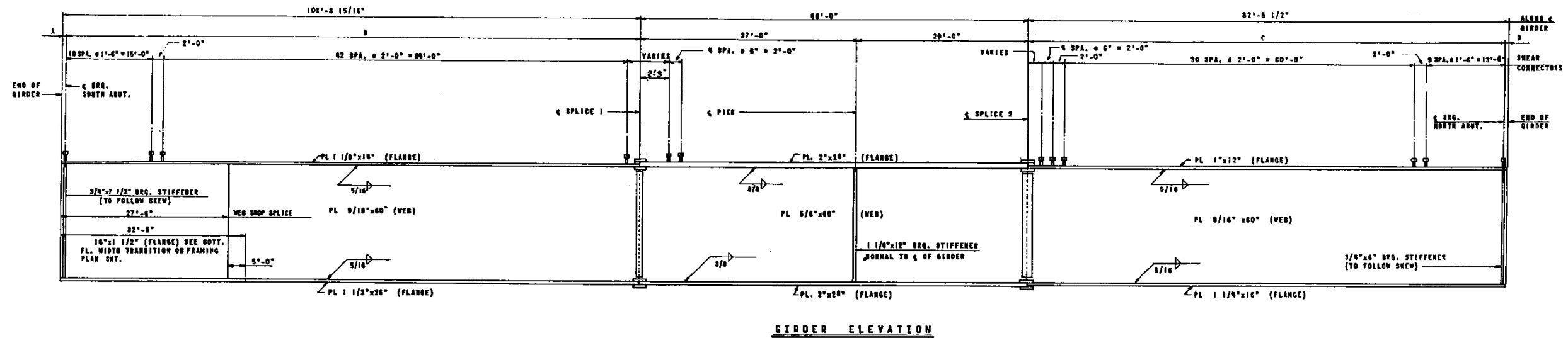
USER NAME = somool	DESIGNED -	REVISED -
PLOT SCALE = 100.0000' / in.	DRAWN -	REVISED -
PLOT DATE = 11/6/2020	CHECKED -	REVISED -
	DATE -	REVISED -

STATE OF ILLINOIS
DEPARTMENT OF TRANSPORTATION

LOCATION 2) SN 049-0111
FRAMING PLAN

SCALE:	SHEET	OF	SHEETS	STA.	TO	STA.
--------	-------	----	--------	------	----	------

F.A. RTE.	SECTION	COUNTY	TOTAL SHEETS	SHEET NO.
	2020-231-BP	VARIOUS	35	9
ILLINOIS FED. AID PROJECT			CONTRACT NO. 62M91	



GIRDER	A	B	C	D
1	6 7/8"	100'-0 1/16"	81'-11 1/2"	6 1/8"
2	6 12/16"	100'-0 1/8"	81'-11 5/16"	6 9/16"
3	6 19/16"	100'-0 1/4"	81'-11 7/16"	6 1/16"
4	6 9/8"	100'-0 3/16"	81'-11 1/2"	6"
5	6 3/4"	100'-0 5/16"	81'-11 3/16"	6 15/16"
6	6 11/16"	100'-0 1/2"	81'-11 5/8"	6 7/8"
7	6 11/16"	100'-0 1/2"	81'-11 1/2"	6 15/16"
8	6 5/8"	100'-0 3/16"	81'-11 9/16"	6 9/8"
9	6 5/8"	100'-0 3/16"	81'-11 9/16"	6 11/16"
10	6 9/16"	100'-0 5/16"	81'-11 7/8"	6 5/8"
11	6 1/2"	100'-0 7/16"	81'-11 15/16"	6 9/16"
12	6 1/2"	100'-0 7/16"	82'-0"	5 1/2"

FOR INFORMATION ONLY

MODEL: Default
 FILE: Model - 2020-231-BP-GIRDER CROSSFRAMES.dwg
 PROJECT: 2020-231-BP-GIRDER CROSSFRAMES.dwg
 USER: jason@illinois.gov
 DATE: 11/6/2020

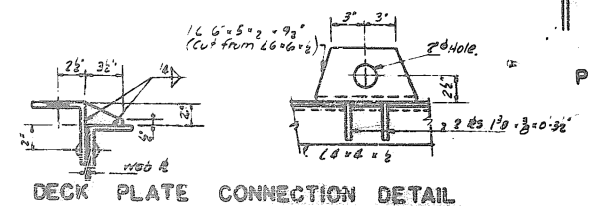
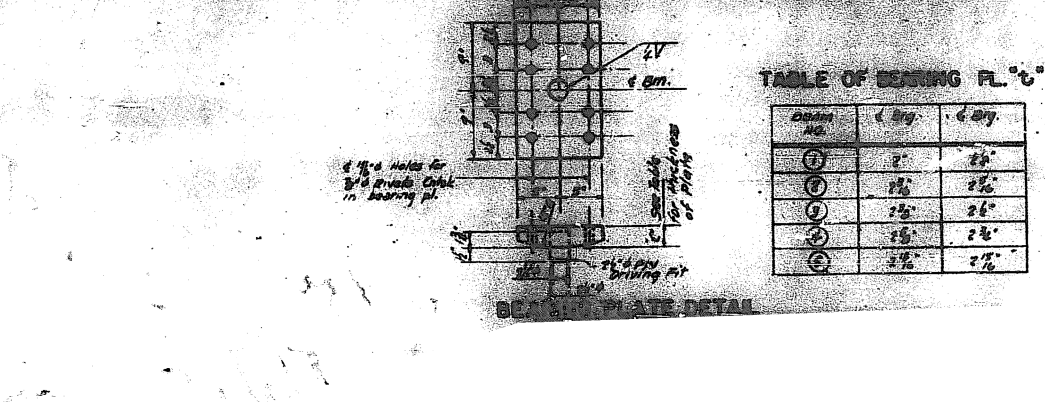
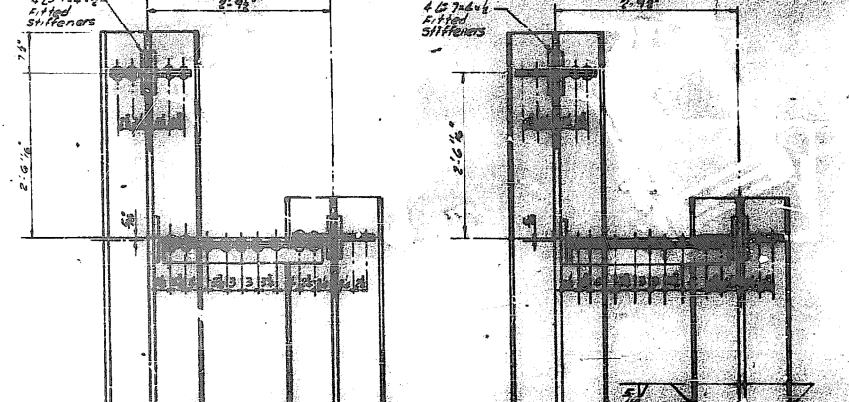
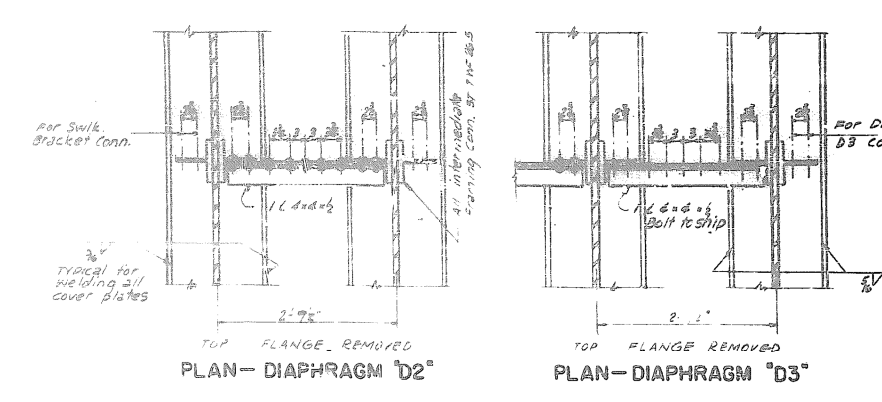
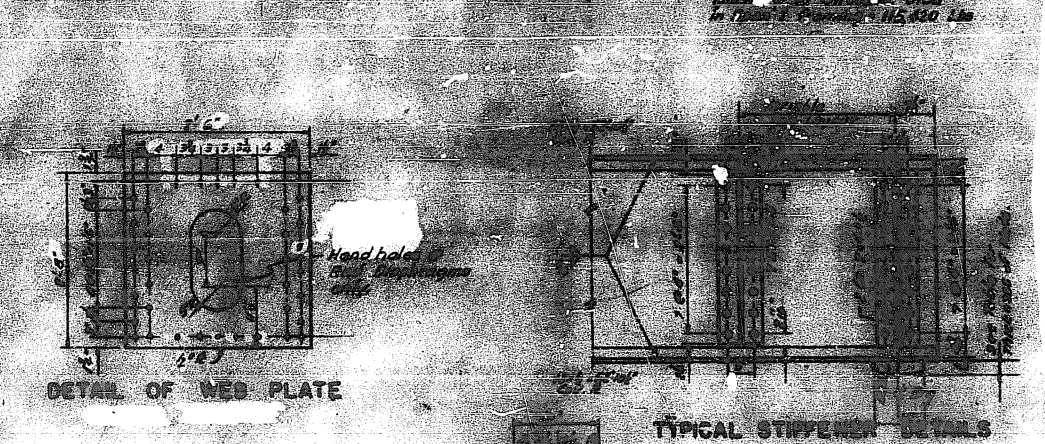
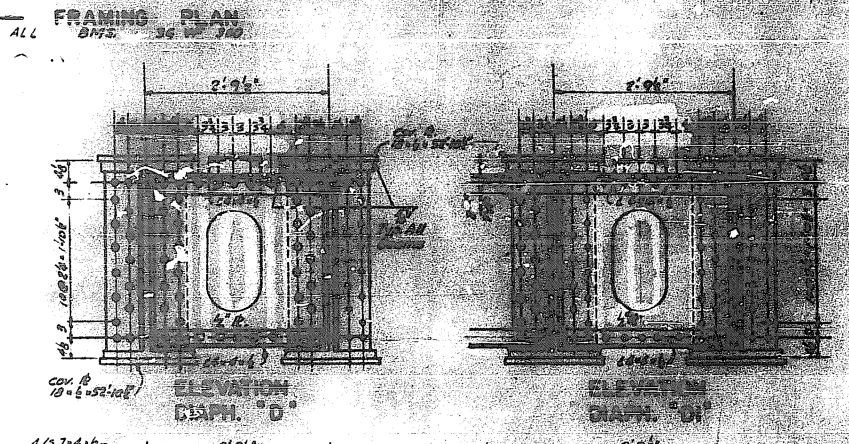
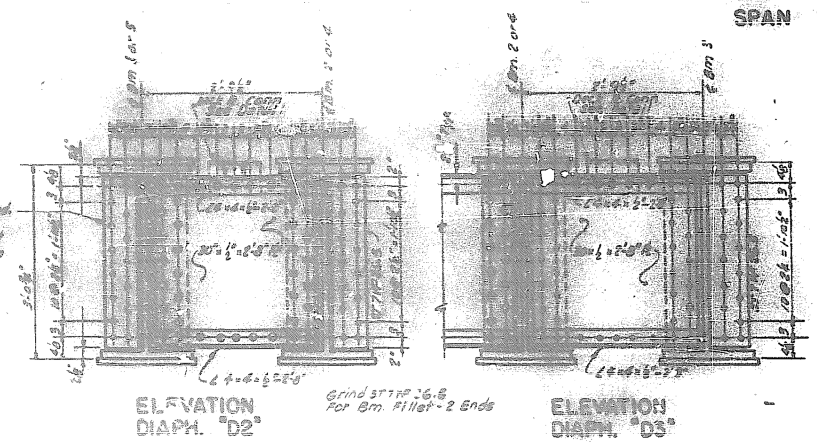
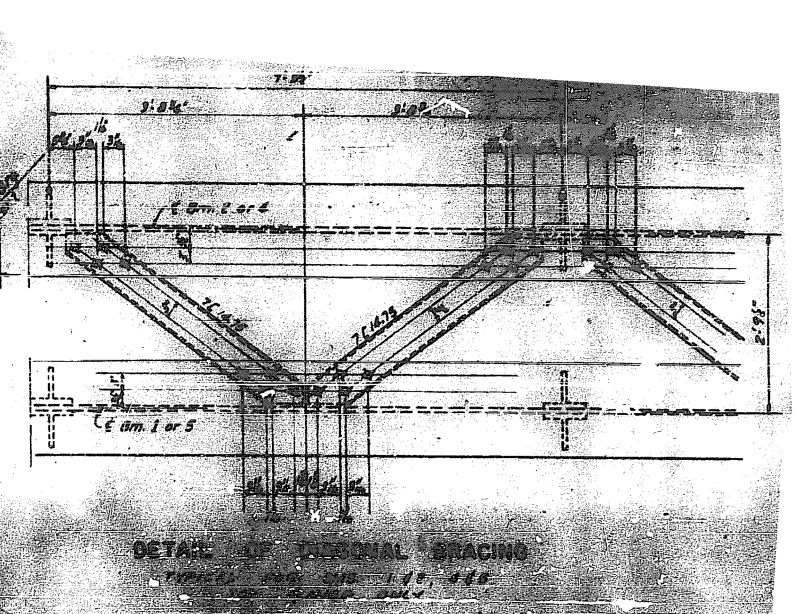
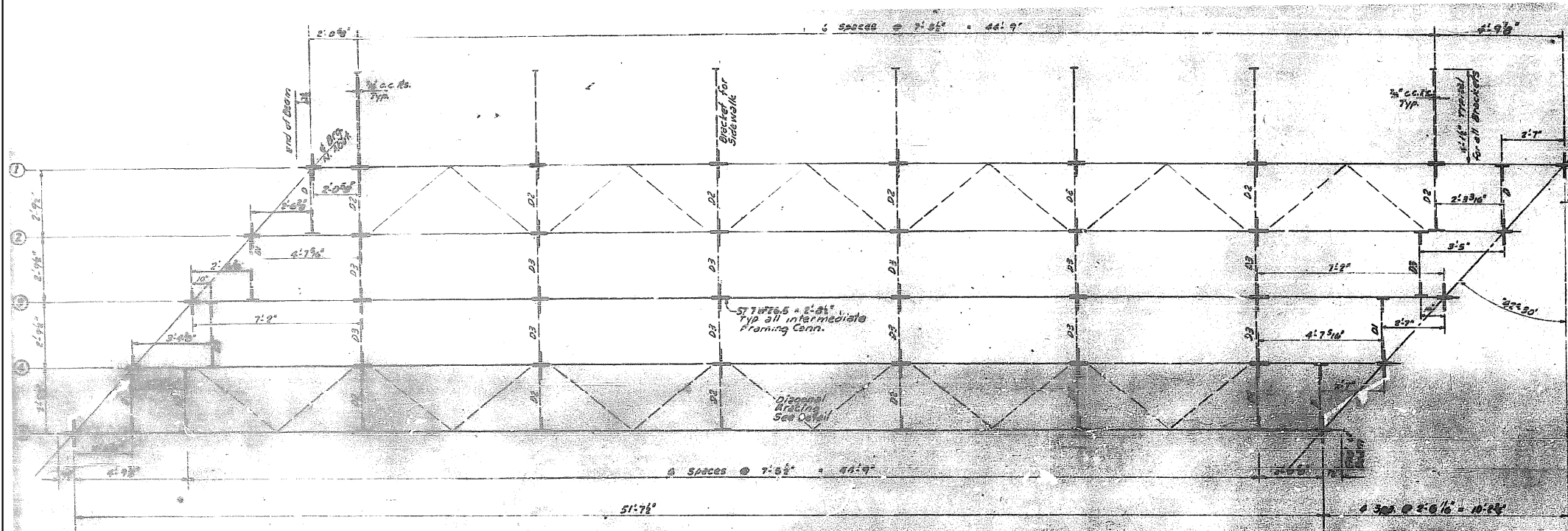
USER NAME = somool	DESIGNED -	REVISED -
PLOT SCALE = 100.0000' / in.	DRAWN -	REVISED -
PLOT DATE = 11/6/2020	CHECKED -	REVISED -
	DATE -	REVISED -

STATE OF ILLINOIS
DEPARTMENT OF TRANSPORTATION

LOCATION 2) SN 049-0111
GIRDER CROSSFRAMES

SCALE: SHEET OF SHEETS STA. TO STA.

F.A. RTE.	SECTION	COUNTY	TOTAL SHEETS	SHEET NO.
	2020-231-BP	VARIOUS	35	9a
CONTRACT NO. 62M91				
ILLINOIS FED. AID PROJECT				



FOR INFORMATION ONLY

MODEL: Default
 FILE: \\p:\pub\room\da\illinois\pwr\DOT\Documents\DOT - Offices\Illinet 1\Project\101821\CADD\Drawings\Design\1\xxxxxx-reg\plg.dgn

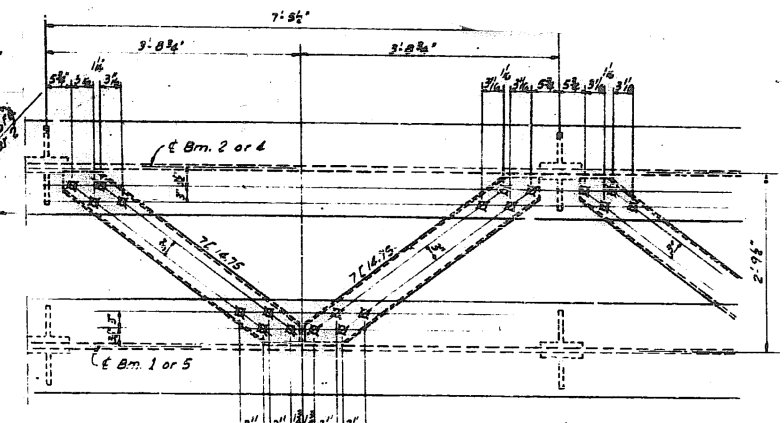
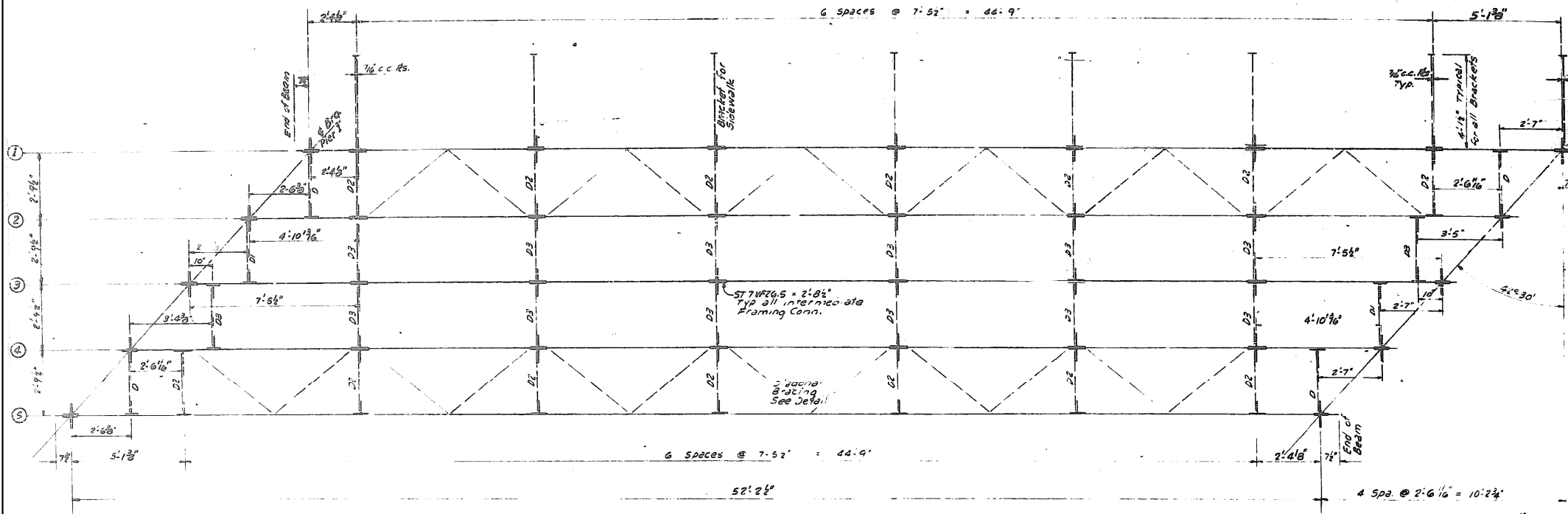
USER NAME = somool	DESIGNED -	REVISED -
	DRAWN -	REVISED -
PLOT SCALE = 100.0000' / in.	CHECKED -	REVISED -
PLOT DATE = 10/8/2020	DATE -	REVISED -

STATE OF ILLINOIS
 DEPARTMENT OF TRANSPORTATION

LOCATION 3) SN 049-0127
 FRAMING PLAN (SPAN 1)

SCALE: SHEET OF SHEETS STA. TO STA.

F.A. RTE.	SECTION	COUNTY	TOTAL SHEETS	SHEET NO.
	2020-231-BP	VARIOUS	35	13
			CONTRACT NO. 62M91	
		ILLINOIS FED. AID PROJECT		



DETAIL OF DIAGONAL BRACING
TYPICAL FOR BMS. #2, 4 & 5
TOP FLANGE ONLY

Quantity of Structural Steel
in Span 2 Framing = 116,480 Lbs.

SPAN 2 - FRAMING PLAN
A.L. BMS 36 WF 300

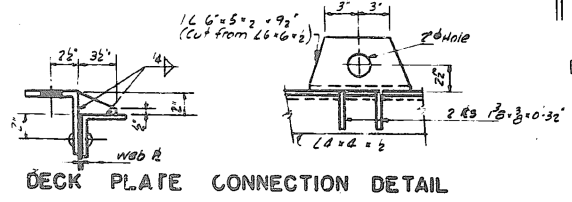
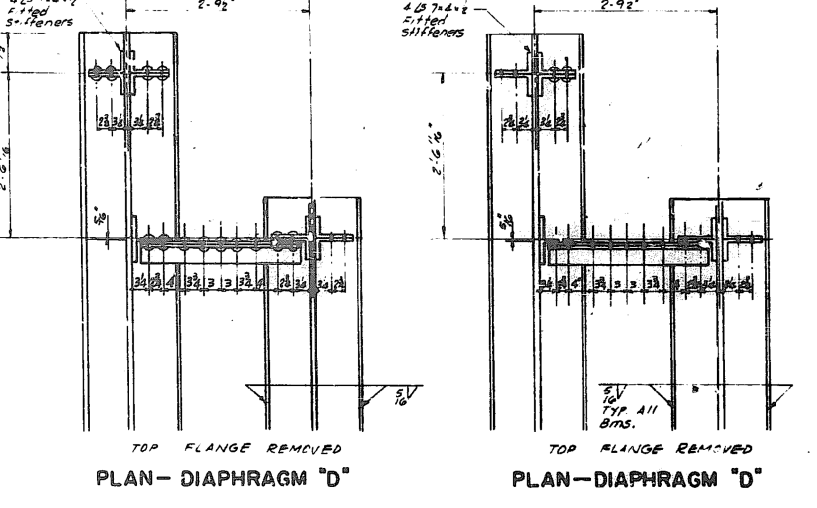
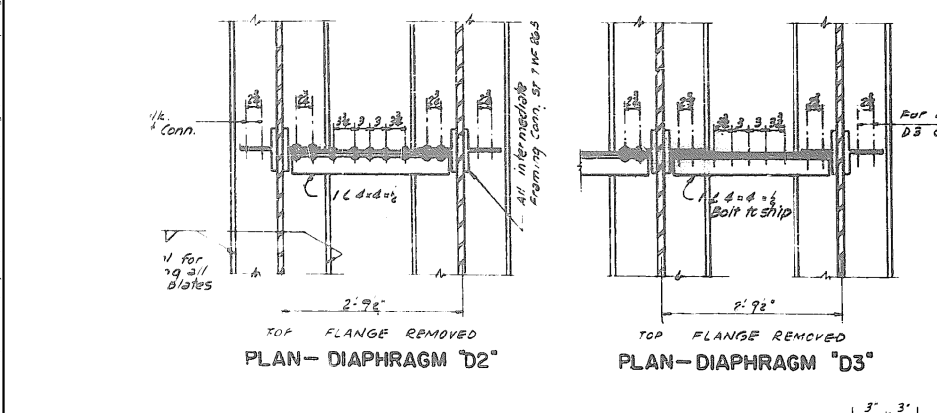
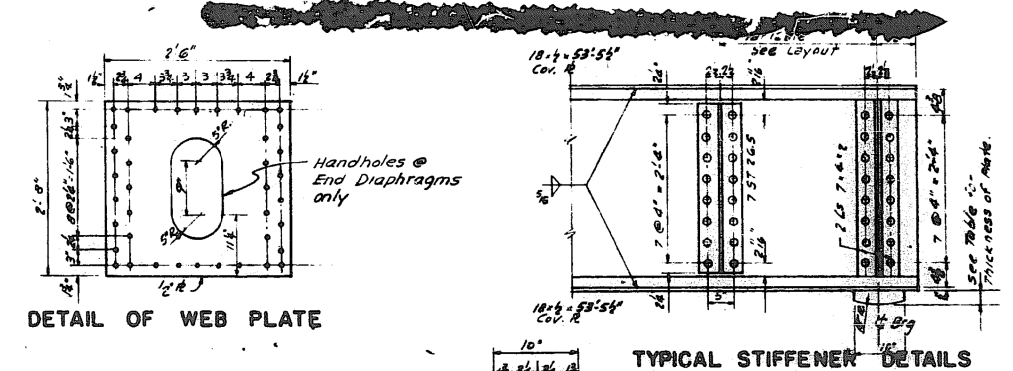
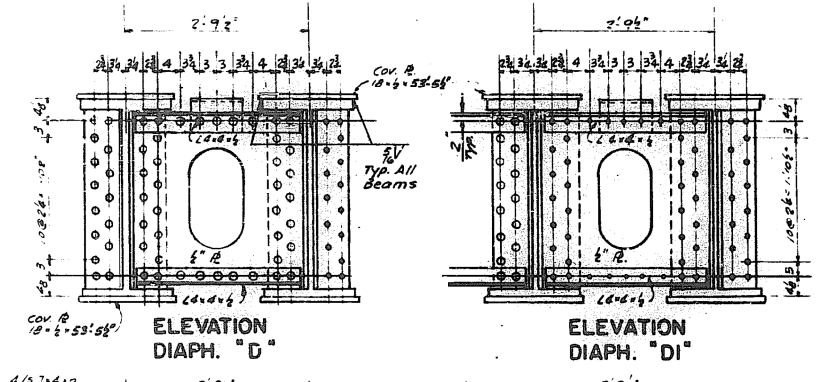
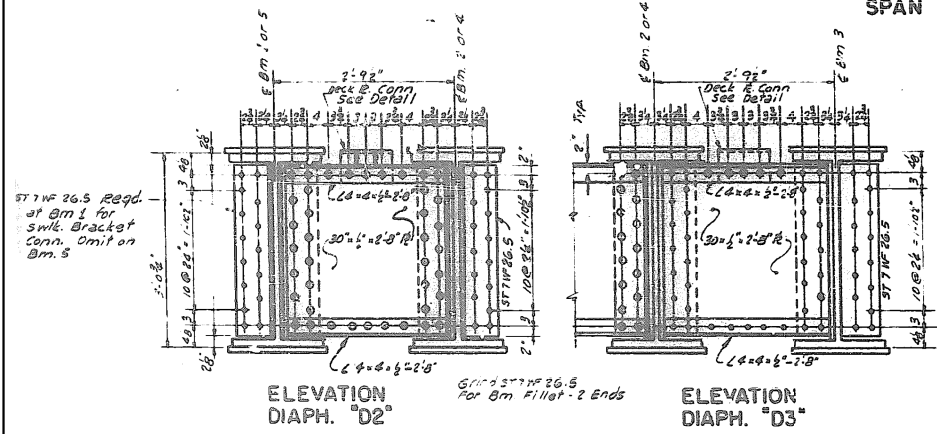


TABLE OF BEARING PL. "C"

BEAM NO.	← Brg	← Brg
1	2'	2 1/2'
2	2 1/2'	2 3/4'
3	2 3/4'	2 3/4'
4	2 3/4'	2 3/4'
5	2 1/2'	2 1/2'

FOR INFORMATION ONLY

MODEL: Default
FILE: Model: p:\pub\p\room\da\illinois\gov\PHOTO\Documents\DOT Office\Drawings\1\Project\201012\1\CD\Drawings\Design\1\xxxxxx-rep.dwg

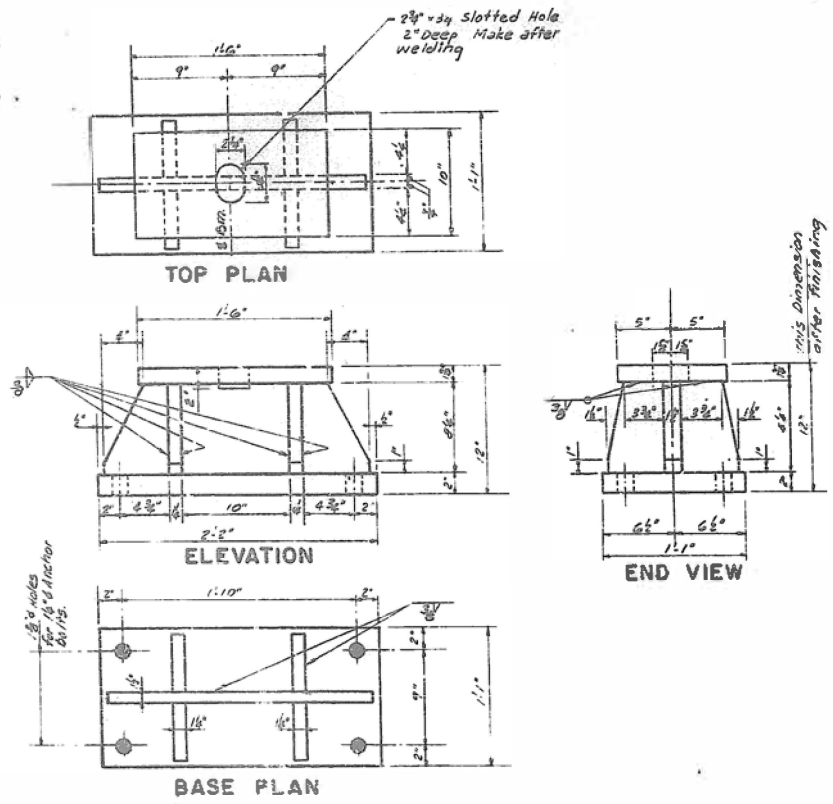
USER NAME = somoo	DESIGNED -	REVISED -
	DRAWN -	REVISED -
PLOT SCALE = 100.0000' / in.	CHECKED -	REVISED -
PLOT DATE = 10/8/2020	DATE -	REVISED -

STATE OF ILLINOIS
DEPARTMENT OF TRANSPORTATION

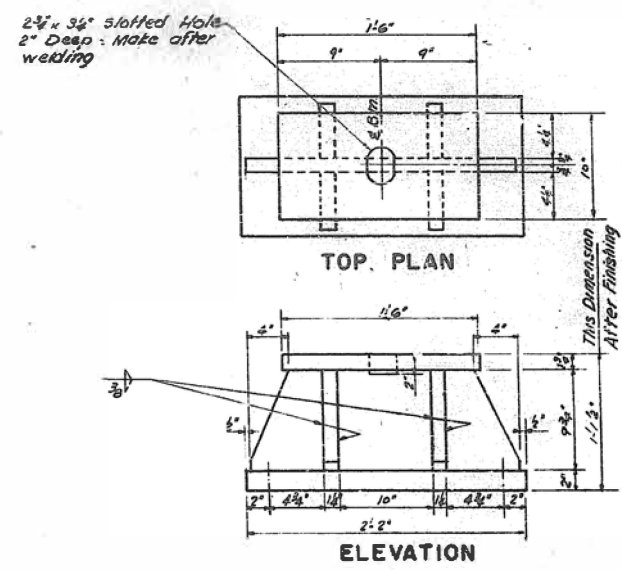
LOCATION 3) SN 049-0127
FRAMING PLAN (SPAN 2)

SCALE: SHEET OF SHEETS STA. TO STA.

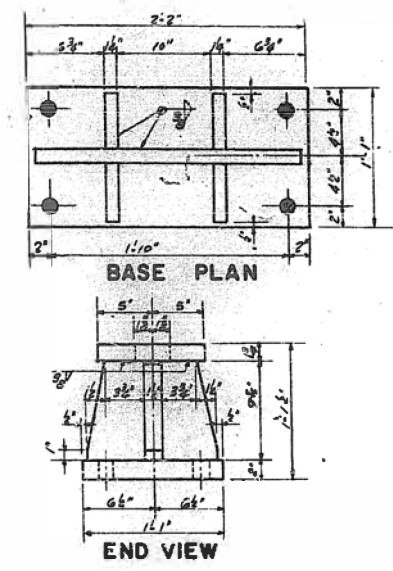
F.A. RTE.	SECTION	COUNTY	TOTAL SHEETS	SHEET NO.
	2020-231-BP	VARIOUS	35	14
			CONTRACT NO. 62M91	
		ILLINOIS	FED. AID PROJECT	



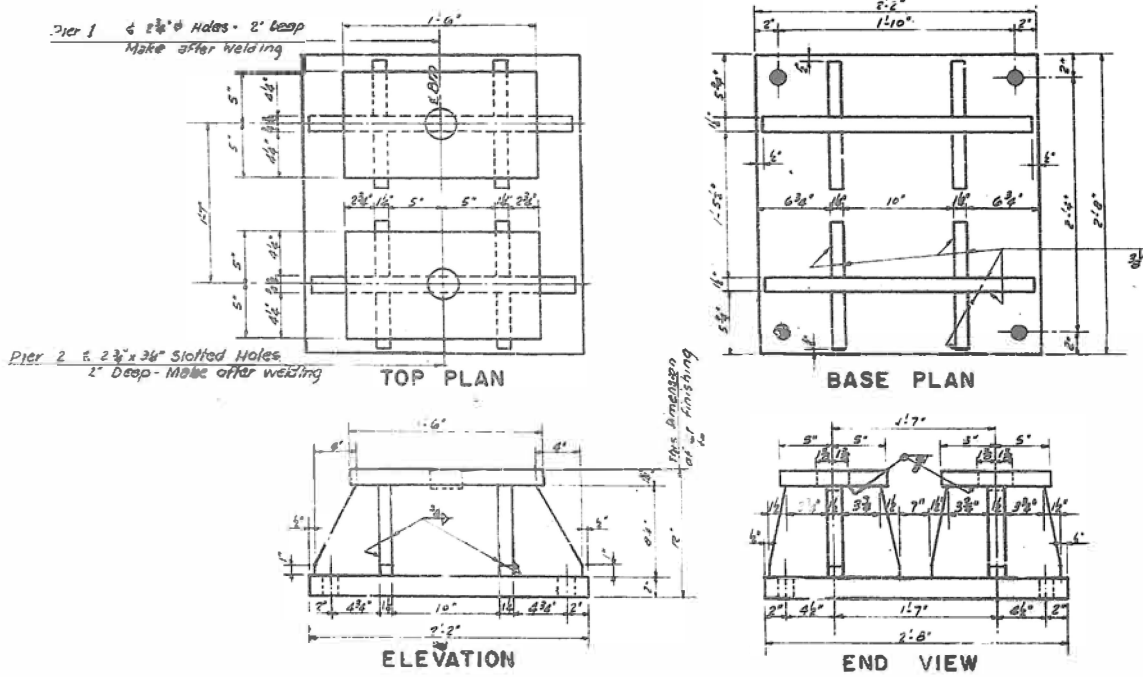
NORTH ABUT. BEARING - 5 REQD.



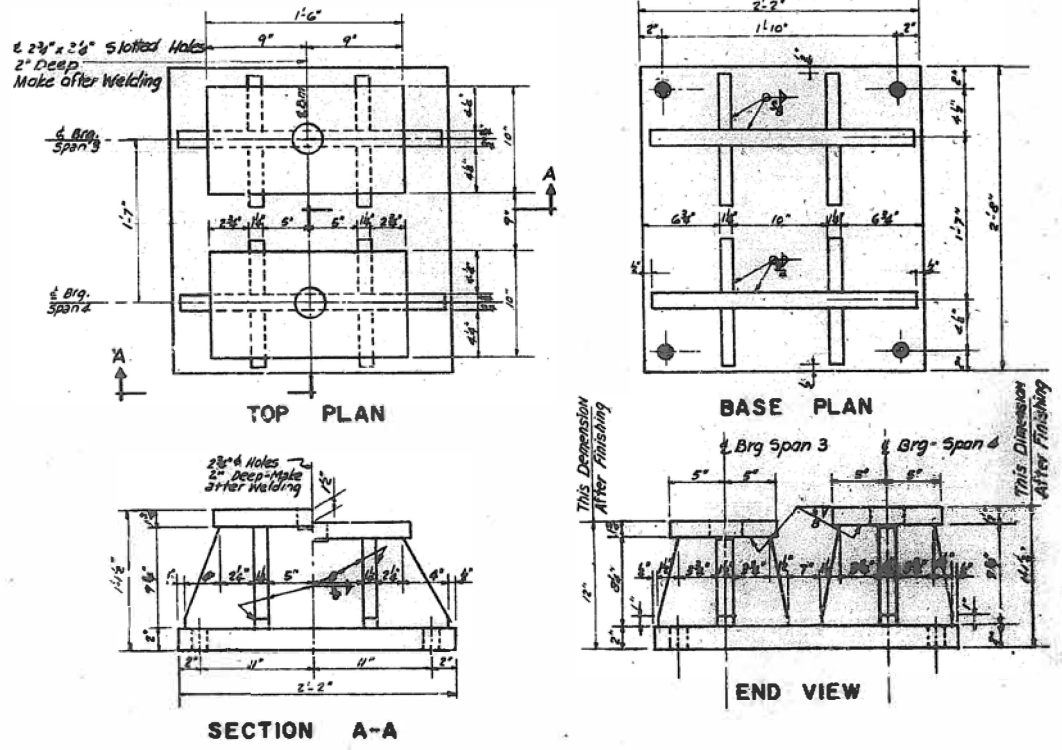
SOUTH ABUT. BEARING - 5 REQD.



PIER 3 BEARINGS - 5 REQD.



PIER 1 BEARINGS - AS SHOWN (5 REQD.)
PIER 2 BEARINGS - AS NOTED (5 REQD.)



FOR INFORMATION ONLY

MODEL: Default
 FILE NAME: P:\p1planroom.dwt\illinois.gov-PWD\DOT\Documents\DOT - Offices\District 1\Project\011821\CADD\Bearing\Design\11xxxx-espall.dgn

USER NAME = somooi	DESIGNED -	REVISED -
	DRAWN -	REVISED -
PLOT SCALE = 100.0000' / in.	CHECKED -	REVISED -
PLOT DATE = 10/30/2020	DATE -	REVISED -

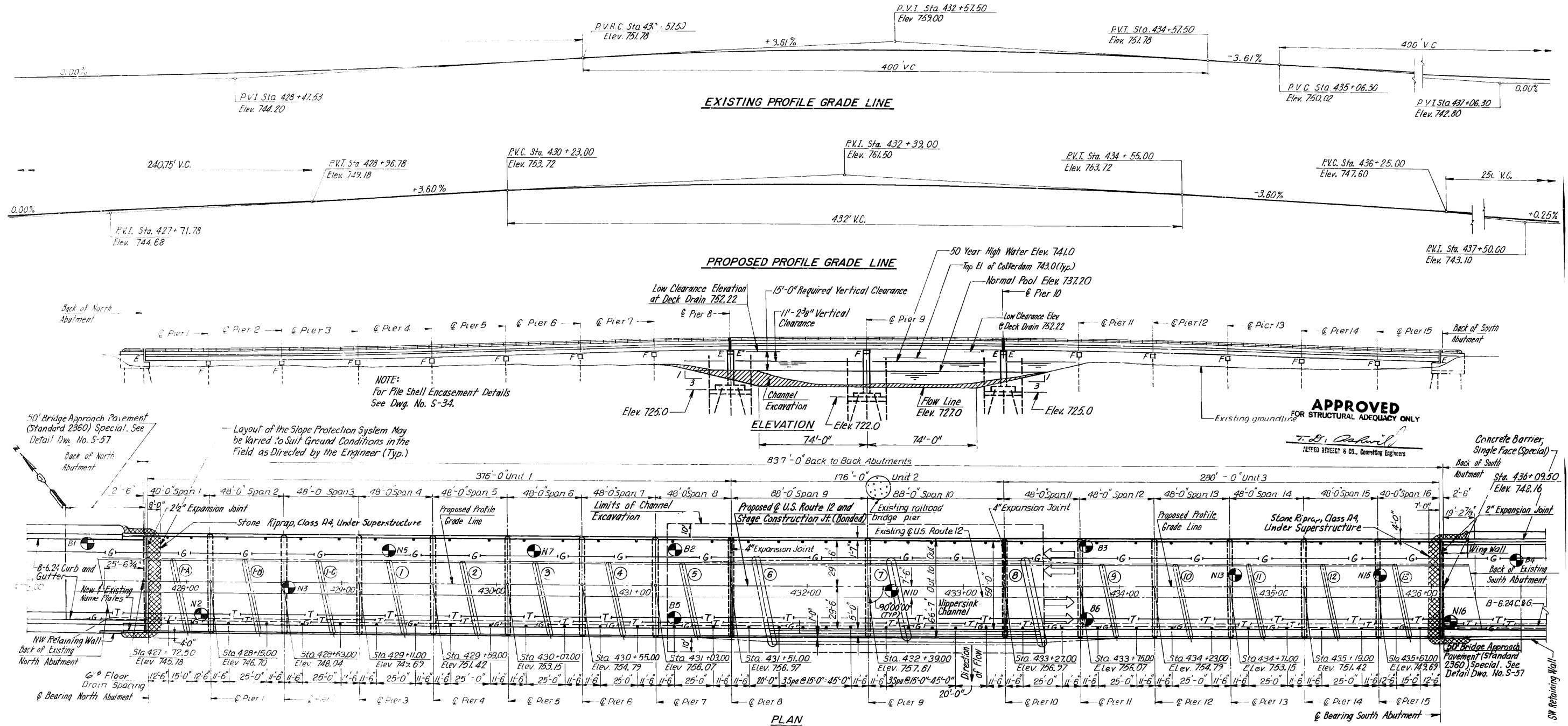
STATE OF ILLINOIS
DEPARTMENT OF TRANSPORTATION

LOCATION 3) SN 049-0127
BEARING DETAILS

SCALE: SHEET OF SHEETS STA. TO STA.

F.A. RTE.	SECTION	COUNTY	TOTAL SHEETS	SHEET NO.
	2020-231-BP	VARIOUS	35	17
ILLINOIS FED. AID PROJECT			CONTRACT NO. 62M91	

FOR INFORMATION ONLY



MODEL: Default
 FILE: \\nas01\proj\planningroom\dat\illinois\pww\DOT\Documents\DOT - Offices\District 1\Projects\2101821\CD\Drawings\Design\DWG\231-01-01-01.dwg
 PROJECT: 2101821

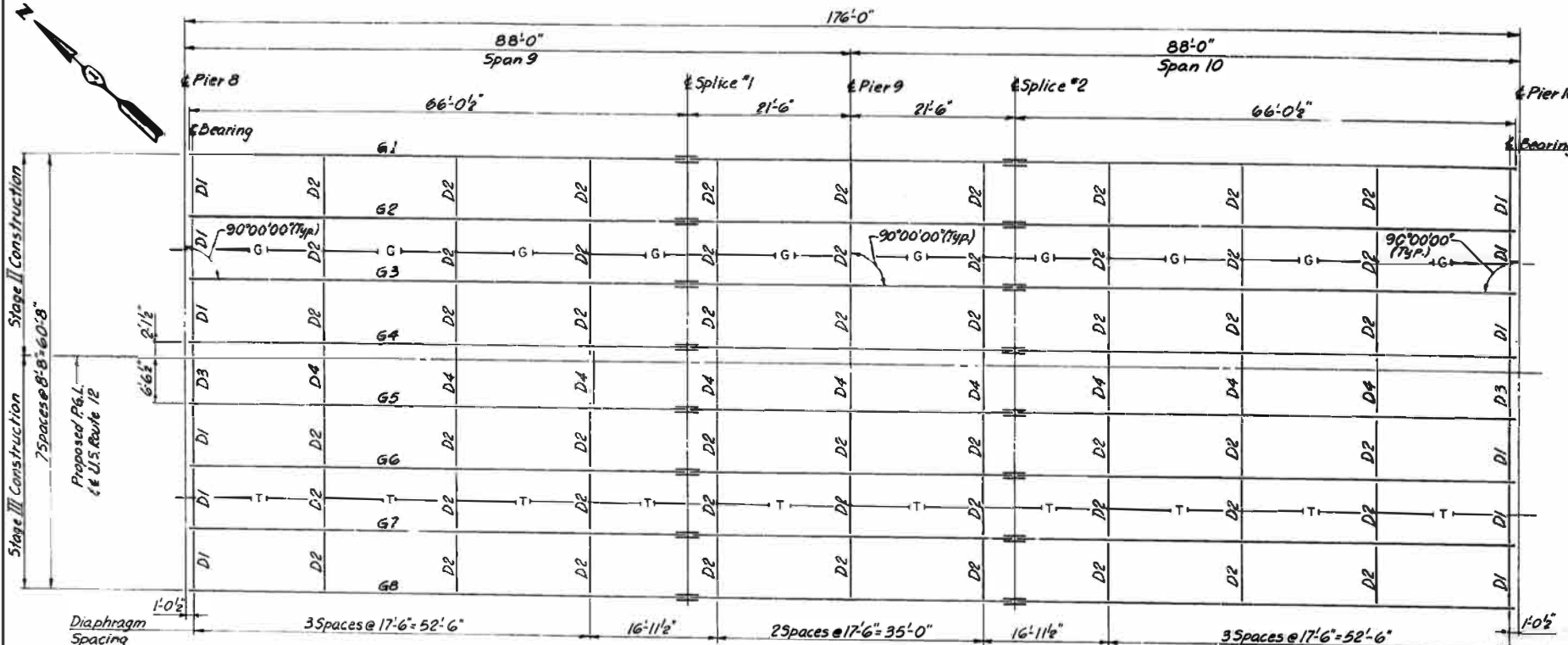
USER NAME = somool	DESIGNED -	REVISED -
	DRAWN -	REVISED -
PLOT SCALE = 100,0000' / in.	CHECKED -	REVISED -
PLOT DATE = 10/8/2020	DATE -	REVISED -

STATE OF ILLINOIS
DEPARTMENT OF TRANSPORTATION

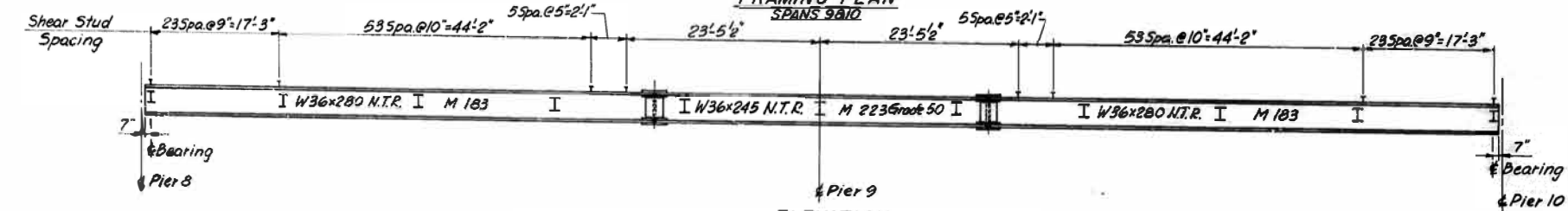
LOCATION 4) 049-0167
GENERAL PLAN AND ELEVATION

SCALE: SHEET OF SHEETS STA. TO STA.

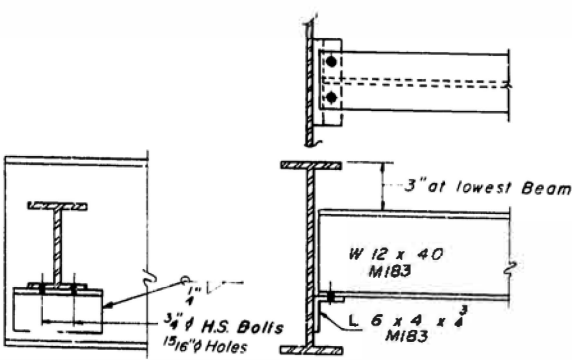
F.A. RTE.	SECTION	COUNTY	TOTAL SHEETS	SHEET NO.
	2020-231-BP	VARIOUS	35	18
ILLINOIS			CONTRACT NO. 62M91	



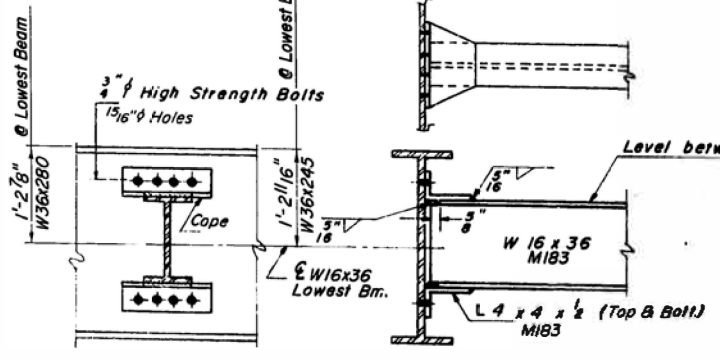
FRAMING PLAN
SPANS 9&10



ELEVATION
N.T.R.: Notch Toughness Requirement

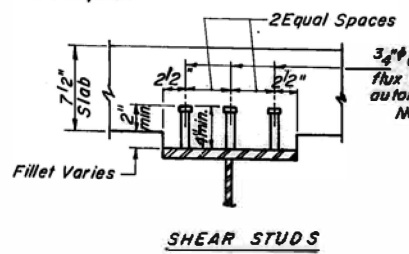


DIAPHRAGM D1
12 Required

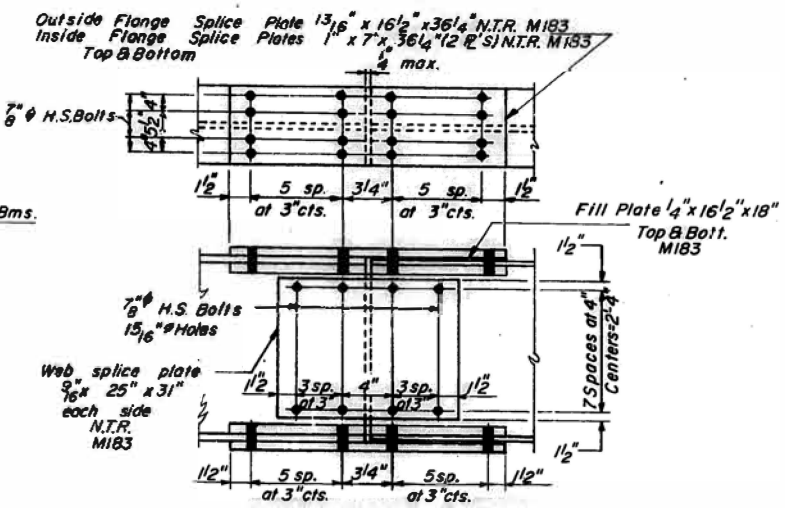


DIAPHRAGM D2
54 Required

Note: Two hardened washers shall be required over all 15/16" holes in diaphragm connections.



SHEAR STUDS



SPICES #1&2

FOR INFORMATION ONLY

MODEL: Defout
 FILE: M:\GIS\proj\planroom\dot\illinois.gov\p\w\DOT\Documents\DOT - Offices\District 1\Projects\101821\CADD\Drawings\DOT - Offices\reg\plan.dgn
 PROJECT: 101821\CADD\Drawings\DOT - Offices\reg\plan.dgn

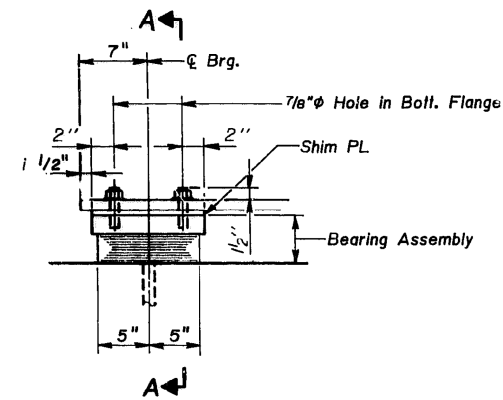
USER NAME = som001	DESIGNED -	REVISED -
	DRAWN -	REVISED -
PLOT SCALE = 100.0000' / in.	CHECKED -	REVISED -
PLOT DATE = 10/30/2020	DATE -	REVISED -

STATE OF ILLINOIS
DEPARTMENT OF TRANSPORTATION

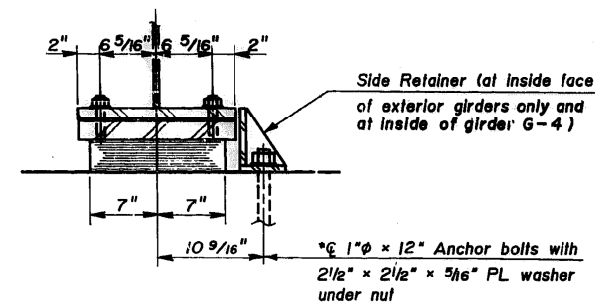
LOCATION 4) 049-0167
FRAMING PLAN

SCALE: SHEET OF SHEETS STA. TO STA.

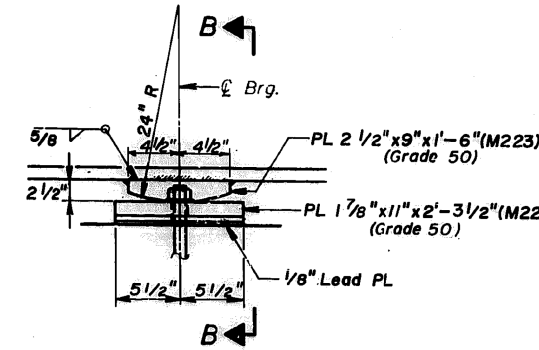
F.A. RTE.	SECTION	COUNTY	TOTAL SHEETS	SHEET NO.
	2020-231-BP	VARIOUS	35	19
			CONTRACT NO. 62M91	
		ILLINOIS FED. AID PROJECT		



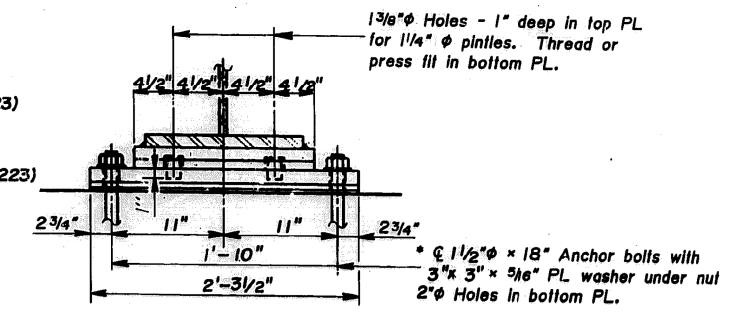
ELEVATION AT PIERS 8 & 10



SECTION A-A



**ELEVATION AT PIER 9
(8 Req'd.)**

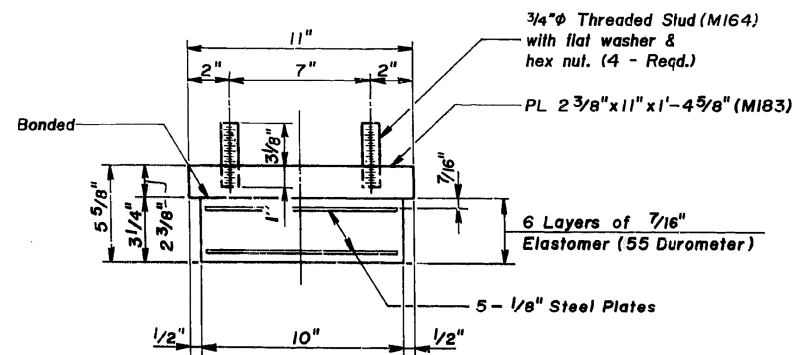


SECTION B-B

TYPE I ELASTOMERIC EXP. BRG.

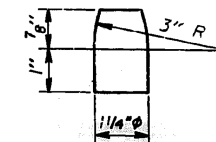
* Notes: Anchor bolts at fixed bearings may be built into the masonry. See Dwg. No. S-31 for Anchor Bolt Installation.

FIXED BEARING

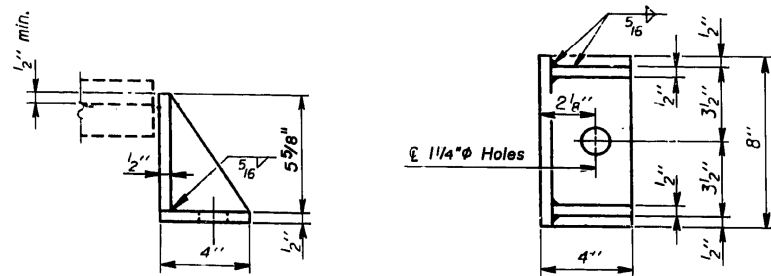


**BEARING ASSEMBLY
(16 Req'd.)**

Note: Shim plates shall not be placed under Bearing Assembly.



PINTLE



**SIDE RETAINER
(6 Req'd.)**

Equivalent rolled angle with stiffeners will be allowed in lieu of welded plates

FOR INFORMATION ONLY

MODEL: Default
FILE: h:\a\c\p\pub\haronom.dwg
PROJECT: 101821\CD\Drawings\DOT Office\Drawings\1\Project\101821\CD\Drawings\Design\1\xxxxx\reg\p\kz.dwg

USER NAME = somool	DESIGNED -	REVISED -
	DRAWN -	REVISED -
PLOT SCALE = 100.0000' / in.	CHECKED -	REVISED -
PLOT DATE = 10/8/2020	DATE -	REVISED -

STATE OF ILLINOIS
DEPARTMENT OF TRANSPORTATION

LOCATION 4) 049-0167
BEARING DETAILS

SCALE: SHEET OF SHEETS STA. TO STA.

F.A. RTE.	SECTION	COUNTY	TOTAL SHEETS	SHEET NO.
	2020-231-BP	VARIOUS	35	20
			CONTRACT NO. 62M91	
		ILLINOIS	FED. AID PROJECT	

THIS PAGE INTENTIONALLY LEFT BLANK

MODEL: Default
FILE: \\nashville.pva\pub\lancorn.dwg; Illinois.gov; PWIDOT\Documents\DOT_Offices\District_1\Projects\101821\CADData\Design\101821-xx-xx-repairs.dgn

USER NAME = somooi	DESIGNED -	REVISED -
	DRAWN -	REVISED -
PLOT SCALE = 100,0000 ' / in.	CHECKED -	REVISED -
PLOT DATE = 11/5/2020	DATE -	REVISED -

**STATE OF ILLINOIS
DEPARTMENT OF TRANSPORTATION**

LOCATION 4) 049-0167

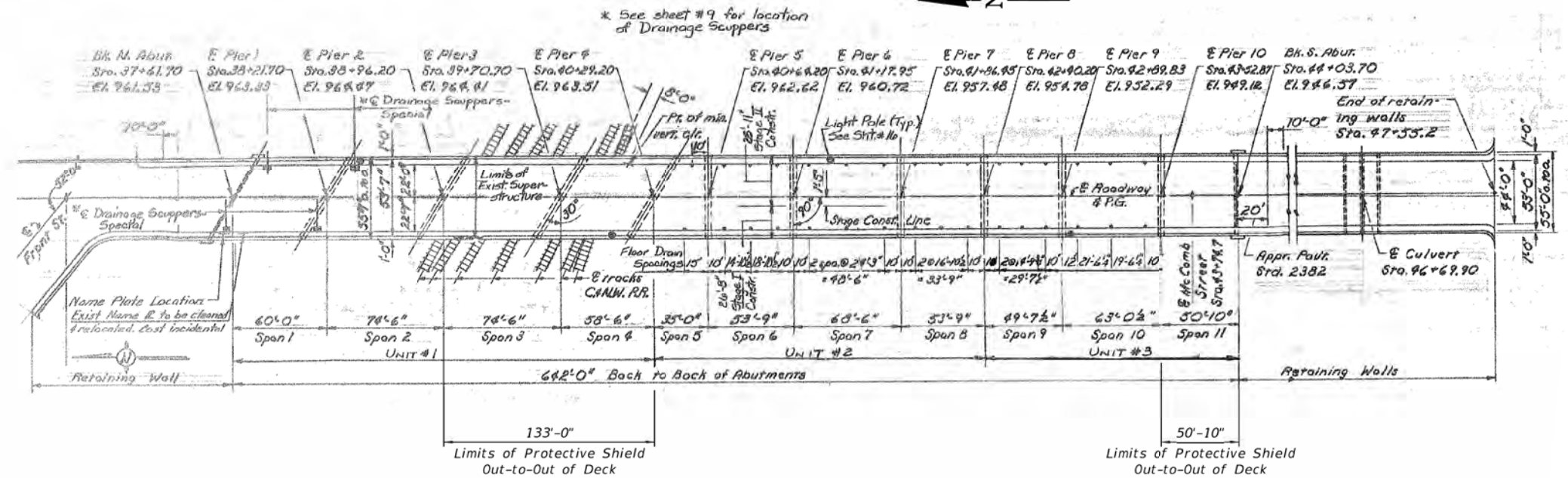
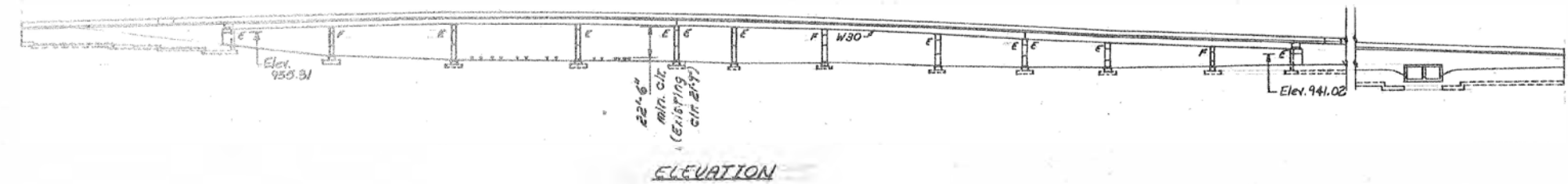
SCALE: SHEET OF SHEETS STA. TO STA.

F.A. RTE.	SECTION	COUNTY	TOTAL SHEETS	SHEET NO.
	2020-231-BP	VARIOUS	35	22
				CONTRACT NO. 62M91
		ILLINOIS	FED. AID PROJECT	

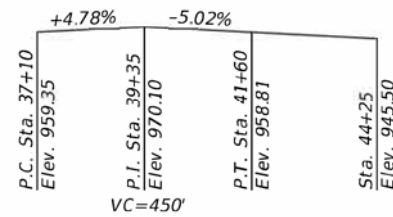
Existing Structure: S.N. 056-0007 was originally built in 1940 and reconstructed in 1970. The existing structure consists of eleven span steel beams with reinforced concrete deck at a skew of 30°. The out-to-out width of deck is 55'-7".

Traffic to be maintained utilizing stage construction.

No Salvage.



EXISTING PROFILE GRADE



EXISTING CURVE DATA

P.I. Sta. = 46+70.7
 $\Delta = 0^{\circ}-27'$
 $D = 0^{\circ}-12'$
 $T = 112.5$
 $L = 225.0$
 $R = 28,647.9$

DESIGN SPECIFICATIONS

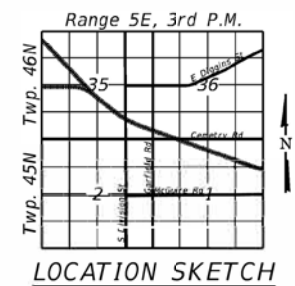
2002 AASHTO Standard Specifications for Highway Bridges, 17th Edition

EXISTING LOADING HS 20-44
Allow 50#/sq. ft. for future wearing surface.

EXISTING DESIGN STRESSES

FIELD UNITS

$f'_c = 3,500$ psi
 $f_y = 60,000$ psi (Reinforcement)
 $f_y = 50,000$ psi (AASHTO M-229) (Str. Steel)
 $f_y = 36,000$ psi (AASHTO M-185) (Str. Steel)
 $f_y = 50,000$ psi (AASHTO M-222) (Brg. Plates)



FOR INFORMATION ONLY

MODEL: Default
 FILE: Model2 - Project\BIDD\Documents\BIDD - Office\BID\Draw - 1\Project\210182\1\CD\Draw\Design\1\xxxx-erep\pld.dgn

USER NAME = somool	DESIGNED -	REVISED -
	DRAWN -	REVISED -
PLOT SCALE = 100,0000' / in.	CHECKED -	REVISED -
PLOT DATE = 10/30/2020	DATE -	REVISED -

**STATE OF ILLINOIS
DEPARTMENT OF TRANSPORTATION**

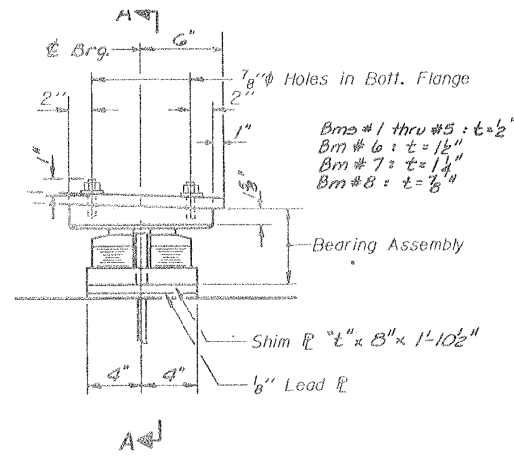
**LOCATION 5) 056-0007
GENERAL PLAN AND ELEVATION**

SCALE: SHEET OF SHEETS STA. TO STA.

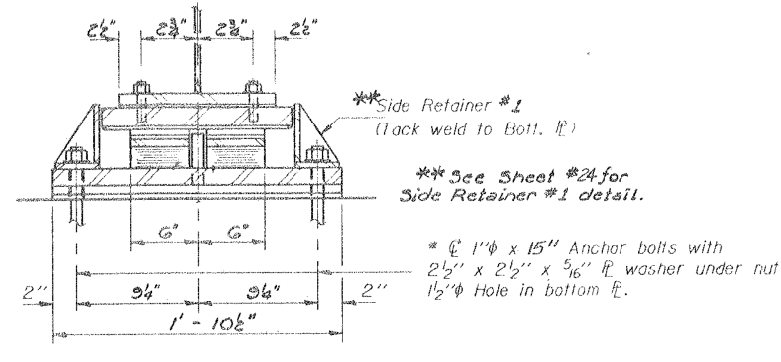
F.A. RTE.	SECTION	COUNTY	TOTAL SHEETS	SHEET NO.
	2020-231-BP	VARIOUS	35	25
CONTRACT NO. 62M91				
ILLINOIS FED. AID PROJECT				

STATE OF ILLINOIS
DEPARTMENT OF TRANSPORTATION

FOR INFORMATION ONLY

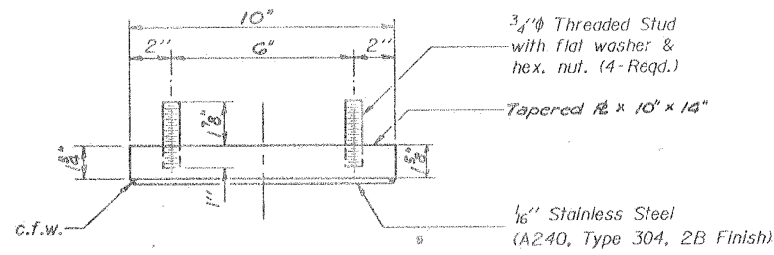


ELEVATION AT N. BRG. - PIER #4
(Looking East)
TYPE III ELASTOMERIC EXP. BRG.

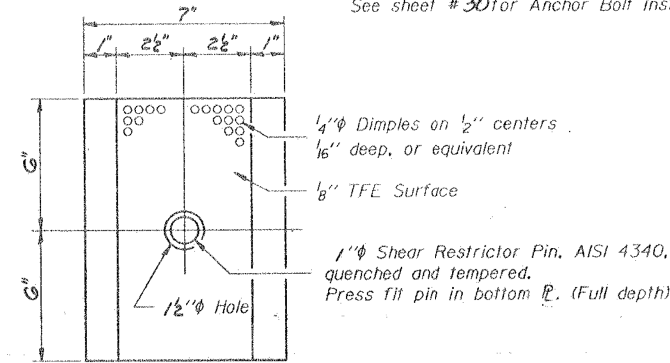


SECTION A-A

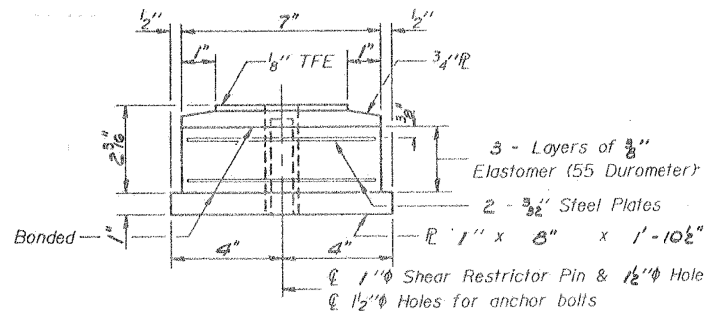
* Notes: Anchor bolts at fixed bearings may be built into the masonry.
See sheet #30 for Anchor Bolt Installation.



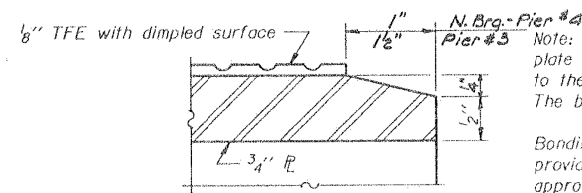
TOP BEARING ASSEMBLY



PLAN-TFE ELASTOMERIC BRG.



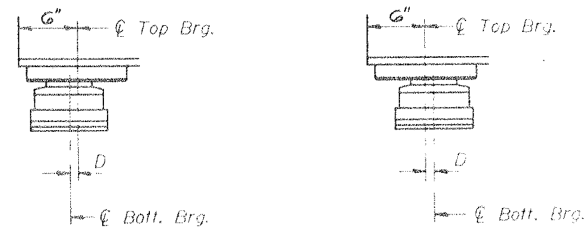
BOTTOM BEARING ASSEMBLY



SECTION THRU TFE

Note: The 1/8" TFE sheet shall be bonded directly to the top steel plate with a two-component, medium viscosity epoxy resin, conforming to the requirements of the Federal Specification MMM-A-134, Type I. The bond agent shall be applied on the full area of the contact surfaces.

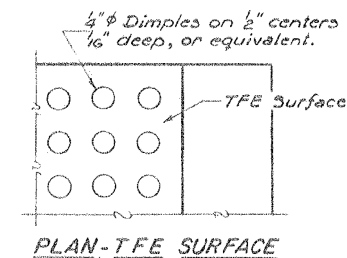
Bonding of 1/8" TFE sheet during warmup process will be permitted provided the process and method of adjusting assembly height is approved by the Engineer.



SETTING ANCHOR BOLTS AT EXP. BRG.

D = 1/8" per each 100' of expansion for every 15° temp. change from the normal temp. of 50° F.

(Showing N. Brg. - Pier #4 - Looking West)



PIER #3 AND N. BRG. - PIER #4
 BEARING DETAILS
 FA. RTE. 68 SEC. 29VB-R(83)
 McHENRY COUNTY
 STA. 40+82.90

MODEL: Default
FILE: h:\mhc\p\pub\anrcom.d\at\links\gov\PIWDOT\Documents\DOT_Offices\Distrc\1\Projects\101821\CAD\Bearing\Design\1\xxxxx-rep\plc.dgn

USER NAME = somool	DESIGNED -	REVISED -
	DRAWN -	REVISED -
PLOT SCALE = 100.0000' / in.	CHECKED -	REVISED -
PLOT DATE = 10/8/2020	DATE -	REVISED -

STATE OF ILLINOIS
DEPARTMENT OF TRANSPORTATION

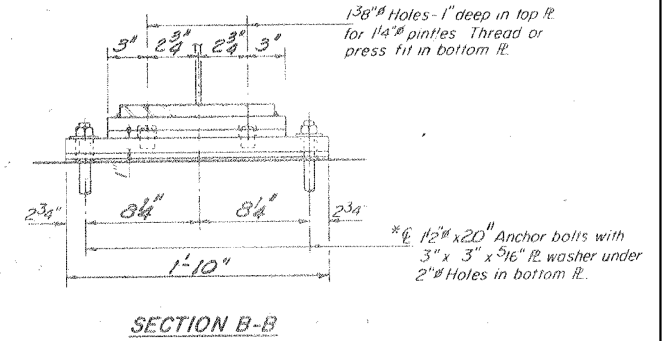
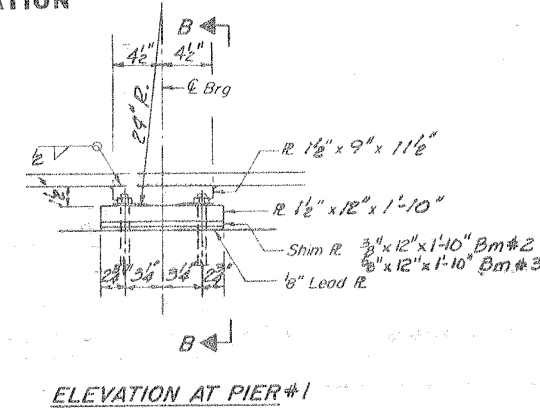
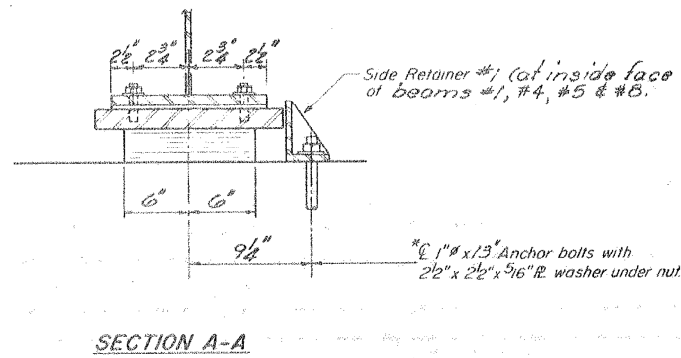
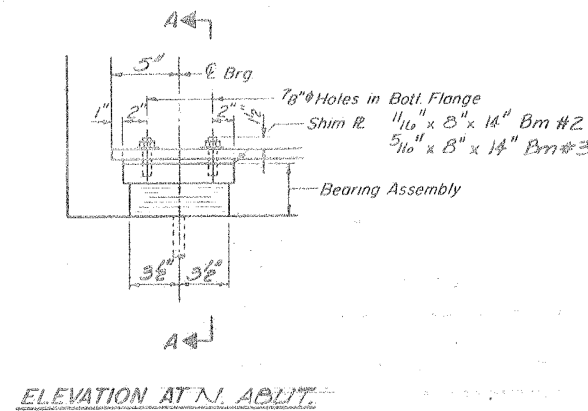
LOCATION 5) 056-0007
BEARING DETAILS

SCALE: SHEET OF SHEETS STA. TO STA.

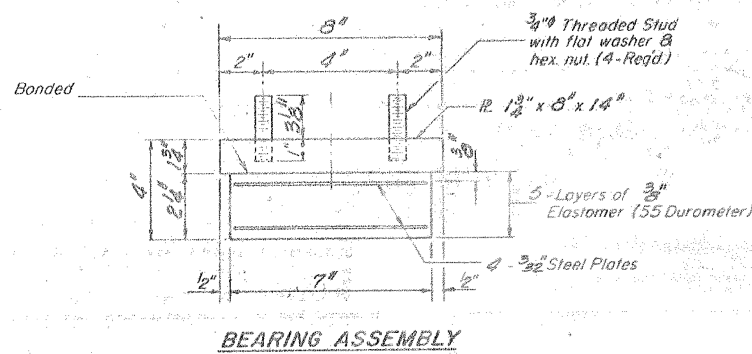
F.A. RTE.	SECTION	COUNTY	TOTAL SHEETS	SHEET NO.
	2020-231-BP	VARIOUS	35	29
			CONTRACT NO. 62M91	
ILLINOIS		FED. AID PROJECT		

FOR INFORMATION ONLY

STATE OF ILLINOIS
DEPARTMENT OF TRANSPORTATION

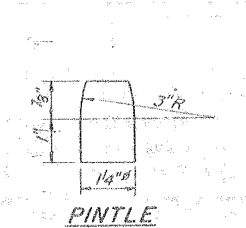


TYPE I ELASTOMERIC EXP. BRG.

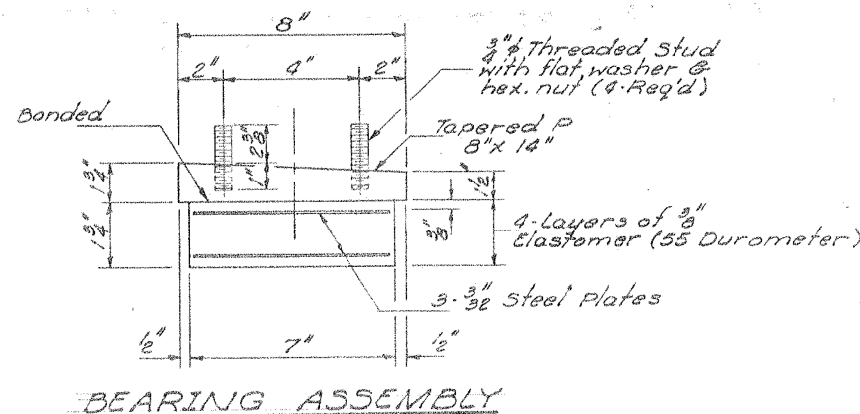
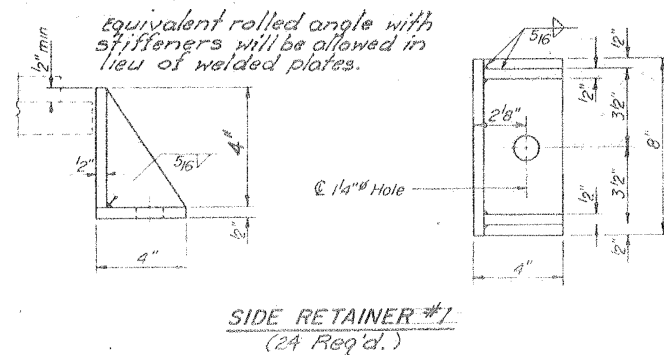
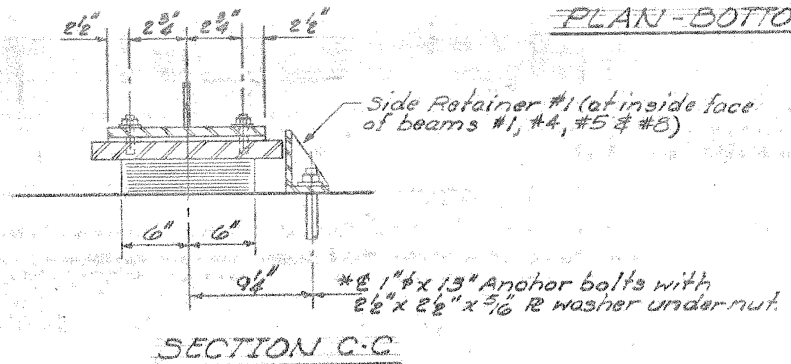
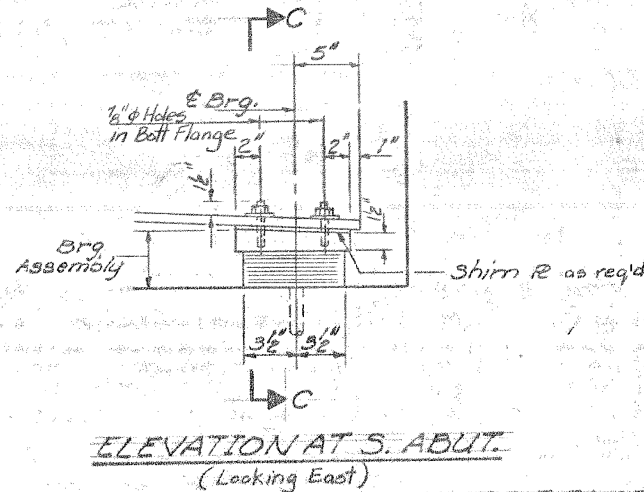
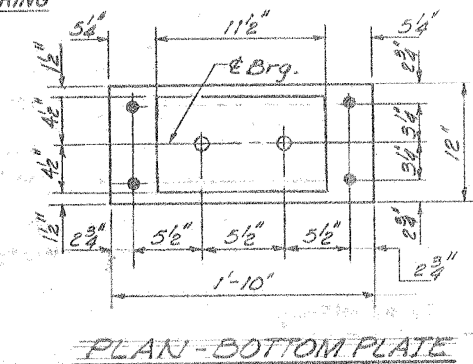


Note: Shim plates shall not be placed under Bearing Assembly.

* Note: Anchor bolts at fixed bearings may be built into the masonry. See sheet #30 for drilled anchor bolt detail.



FIXED BEARING



Note: Shim plates shall not be placed under Bearing Assembly.

N. ABUT., PIER #1 & S. ABUT.
BEARING DETAILS
FA. RT. 68 SEC. 29VB-R(E)
MC HENRY COUNTY
STA. 40+82.90

MODEL: Default
FILE: \\hpc\p\pub\hpc\room\dat\illinois\gov\PIWDOT\Documents\DOT - Offices\District 1\Projects\101821\CD\Drawings\Design\11\xxxxx-repair.dgn

USER NAME = somool	DESIGNED -	REVISED -
	DRAWN -	REVISED -
PLOT SCALE = 100.0000' / in.	CHECKED -	REVISED -
PLOT DATE = 10/8/2020	DATE -	REVISED -

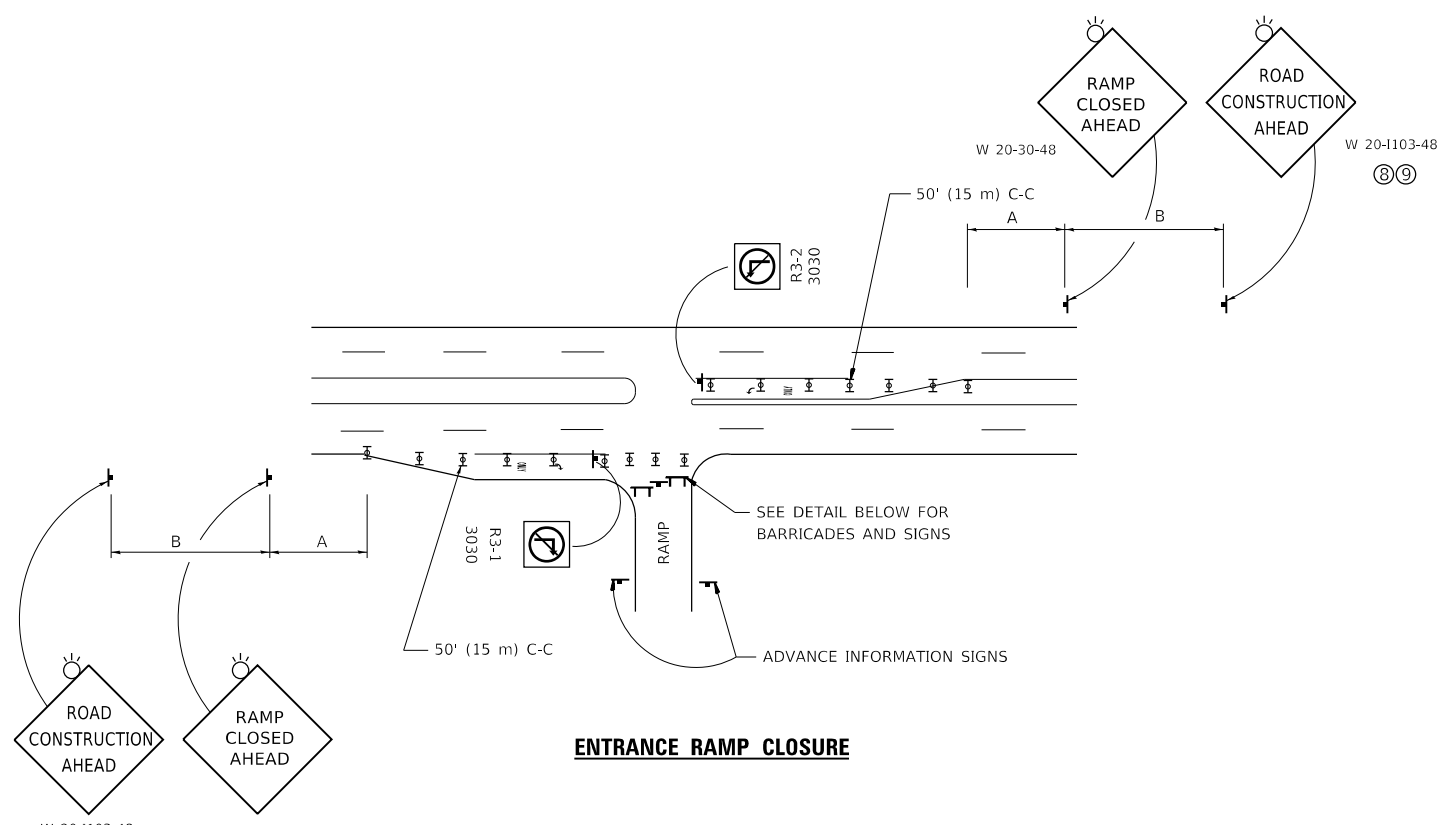
STATE OF ILLINOIS
DEPARTMENT OF TRANSPORTATION

LOCATION 5) 056-0007
BEARING DETAILS

SCALE: SHEET OF SHEETS STA. TO STA.

F.A. RTE.	SECTION	COUNTY	TOTAL SHEETS	SHEET NO.
	2020-231-BP	VARIOUS	35	30
ILLINOIS FED. AID PROJECT			CONTRACT NO. 62M91	

MODEL: Default
 FILE: \\nas01c.pw.state.il.us\pub\baronm\ad\illinois.gov\PW\DOT\Documents\DOT_Offices\Dir\et_1\Projects\101821\CAD\Drawings\Design\DRS\4.dgn

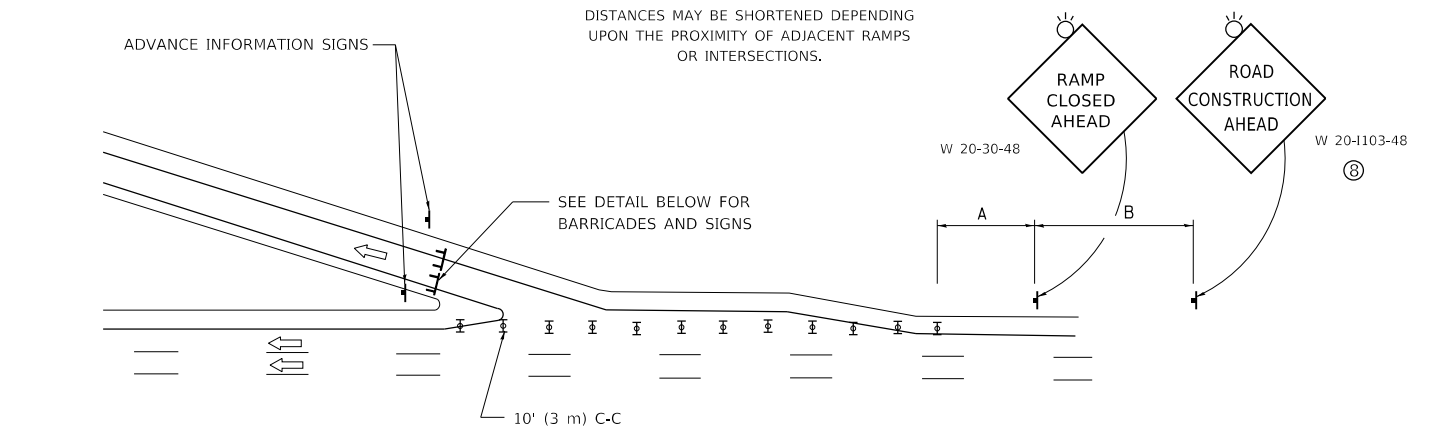


ENTRANCE RAMP CLOSURE

SIGN SPACING TABLE

FACILITY	DISTANCE BETWEEN SIGNS	
	A	B
EXPRESSWAY >24 HOURS	1000' (300 m)	1500' (450 m)
EXPRESSWAY ≤24 HOURS	500' (150 m)	500' (150 m)
ARTERIAL 55 MPH	500' (150 m)	500' (150 m)
ARTERIAL 50-45 MPH	350' (100 m)	350' (100 m)
ARTERIAL <45 MPH	200' (60 m)	200' (60 m)

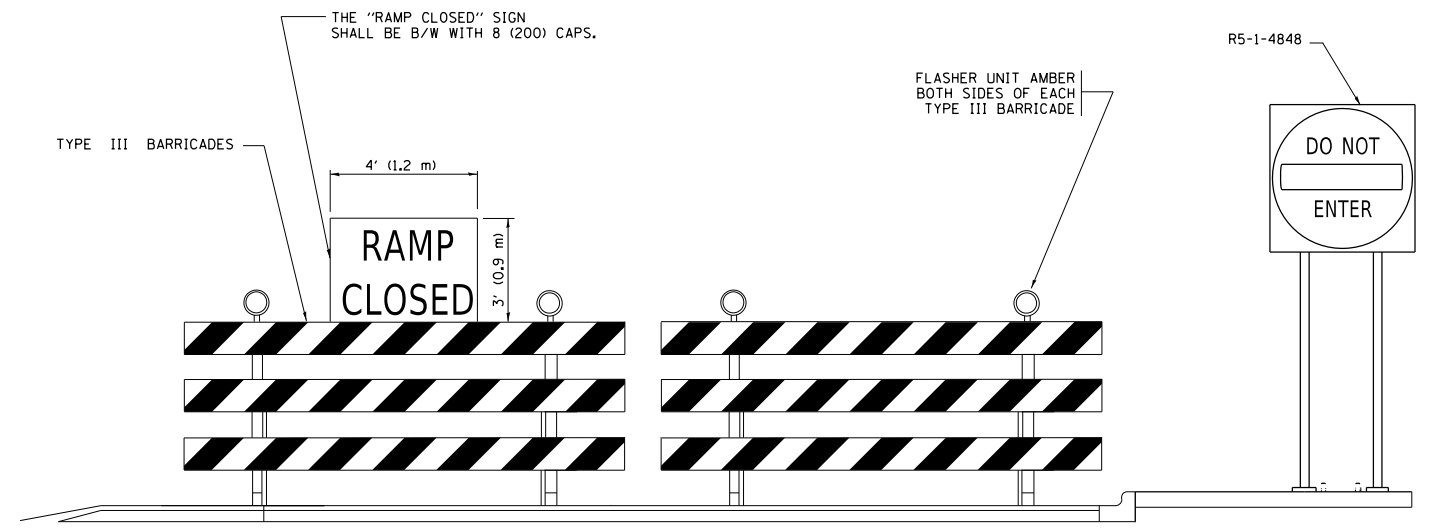
DISTANCES MAY BE SHORTENED DEPENDING UPON THE PROXIMITY OF ADJACENT RAMPS OR INTERSECTIONS.



EXIT RAMP CLOSURE

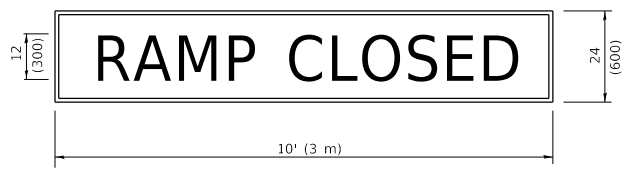
SYMBOLS

- TYPE II BARRICADE OR DRUM
- TYPE III BARRICADE WITH 2 FLASHING LIGHTS



DETAIL FOR REQUIRED BARRICADES & SIGNS

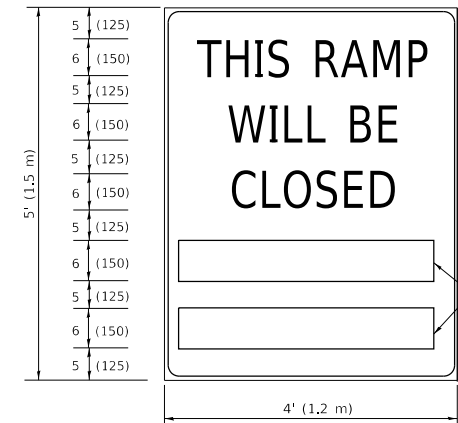
RAMP CLOSURE ADVANCE WARNING SIGN



BLACK LEGEND ON ORANGE BACKGROUND MOUNTED DIAGONALLY
E MOD FONT
1 (25) BORDER

THESE SIGNS ARE REQUIRED ON ALL THE EXIT GUIDE SIGNS FOR EXIT RAMPS THAT WILL BE CLOSED FOR MORE THAN FOUR (4) CONSECUTIVE DAYS.

RAMP CLOSURE ADVANCE INFORMATION SIGN



BLACK LEGEND ON WHITE BACKGROUND

1/2 (12) BORDER

E MOD FONT

THESE BLANK AREAS SHALL BE FILLED WITH THE DATES AND THE TIME THAT THE RAMP WILL BE CLOSED.

THESE SIGNS ARE REQUIRED ON BOTH SIDES OF THE RAMP, MINIMUM OF 1 WEEK IN ADVANCE OF THE CLOSURE.

THESE SIGNS SHALL BE FABRICATED AND PAID FOR ACCORDING TO THE TEMPORARY INFORMATION SIGNING SPECIAL PROVISION

GENERAL NOTES:

- ① CONES MAY BE SUBSTITUTED FOR DRUMS OR TYPE II BARRICADES DURING DAY OPERATIONS. CONES SHALL BE A MINIMUM OF 28 (700) HIGH.
- ② VERTICAL BARRICADES SHALL NOT BE USED FOR RAMP CLOSURES.
- ③ A FLAGGER SHALL BE POSITIONED AT EACH CLOSED RAMP THAT IS OPEN TO CONSTRUCTION VEHICLES, PRECEDED BY A W20-7 FLAGGER WARNING SIGN.
- ④ ALL ROUTE MARKERS AND TRAILBLAZER ASSEMBLIES WHICH DIRECT MOTORISTS TO A CLOSED ENTRANCE RAMP SHALL BE COVERED WHEN THE RAMP IS CLOSED FOR MORE THAN FOUR (4) DAYS.
- ⑤ THE SIGNING AND BARRICADING WHICH IS REQUIRED BY THIS DETAIL SHALL BE INCLUDED IN THE COST OF TRAFFIC CONTROL AND PROTECTION (EXPRESSWAYS).
- ⑥ AUTHORIZATION FROM THE DISTRICT'S BUREAU OF TRAFFIC IS REQUIRED FOR ALL RAMP CLOSURES.
- ⑦ THE RAMP CLOSURE ADVANCE INFORMATION SIGNS SHALL BE ERECTED IF THE CLOSURE TIME EXCEEDS TWENTY-FOUR (24) HOURS. ADDITIONAL ADVANCE WARNING SIGNS ON EXIT GUIDE SIGNING WILL BE REQUIRED FOR EXIT RAMP CLOSURES THAT EXCEED FOUR (4) DAYS IN LENGTH.
- ⑧ ROAD CONSTRUCTION AHEAD SIGNS MAY BE OMITTED WHEN THIS DETAIL IS USED IN CONJUNCTION WITH OTHER TRAFFIC CONTROL THAT ALREADY INCLUDES A ROAD CONSTRUCTION AHEAD SIGN.
- ⑨ ARTERIAL ROAD CONSTRUCTION AHEAD SIGNS SHALL BE INSTALLED ON THE LEFT SIDE OF TRAFFIC IF THE MEDIAN IS MORE THAN 10 FT WIDE.

ALL DIMENSIONS ARE IN INCHES (MILLIMETERS) UNLESS OTHERWISE SHOWN.

USER NAME = somool	DESIGNED - D.W.S.	REVISED - S.P.B._01-07
	DRAWN -	REVISED - S.P.B._12-09
PLOT SCALE = 100.0000' / in.	CHECKED -	REVISED - M.D._06-13
PLOT DATE = 10/8/2020	DATE - 02-83	REVISED - M.D._01-18

**STATE OF ILLINOIS
DEPARTMENT OF TRANSPORTATION**

**ENTRANCE_AND_EXIT_RAMP
CLOSURE_DETAILS**

SCALE: NONE SHEET 1 OF 1 SHEETS STA. TO STA.

F.A. RTE.	SECTION	COUNTY	TOTAL SHEETS	SHEET NO.
VAR.	2020-231-BP	VARIOUS	35	31
	TC-08	CONTRACT NO. 62M91		
		ILLINOIS	FED. AID PROJECT	

THIS PAGE INTENTIONALLY LEFT BLANK

MODEL: Default
FILE: \\mfrs-pw\plannerom.dat\illinois.gov\PWIDOT\Documents\DOT_Offices\District_1\Project\1D101821\CADD\Drawings\Design\1Dxxxx-erepair.dgn

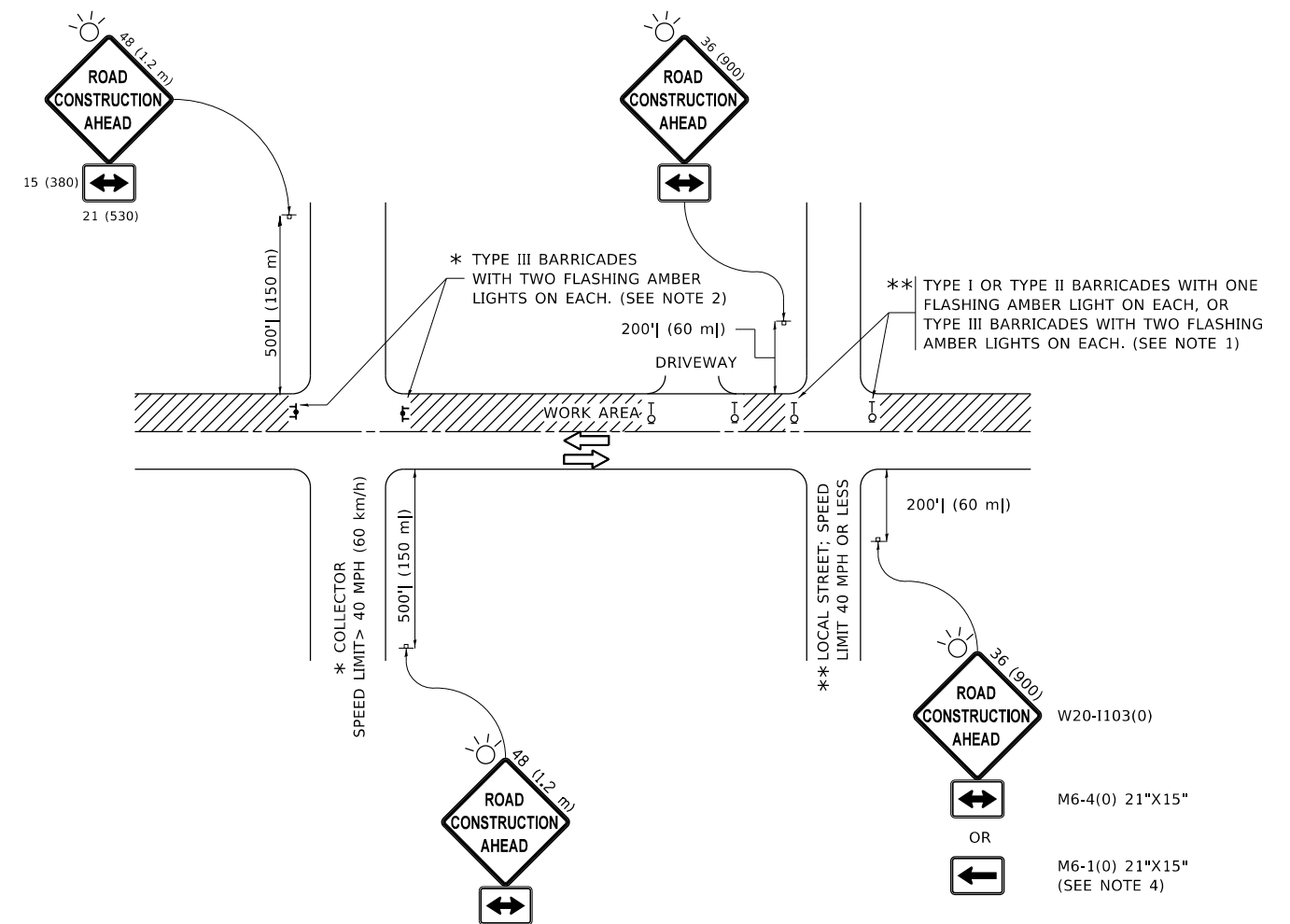
USER NAME = somooi	DESIGNED -	REVISED -
	DRAWN -	REVISED -
PLOT SCALE = 100.0000 ' / in.	CHECKED -	REVISED -
PLOT DATE = 11/5/2020	DATE -	REVISED -

**STATE OF ILLINOIS
DEPARTMENT OF TRANSPORTATION**

THIS PAGE INTENTIONALLY LEFT BLANK

SCALE: SHEET OF SHEETS STA. TO STA.

F.A. RTE.	SECTION	COUNTY	TOTAL SHEETS	SHEET NO.
	2020-231-BP	VARIOUS	35	32
CONTRACT NO. 62M91				
ILLINOIS FED. AID PROJECT				



NOTES:

1. SIDE ROAD WITH A SPEED LIMIT OF 40 MPH (60 km/h) OR LESS AS SHOWN ON THE DRAWING AND AS DIRECTED BY THE ENGINEER:
 - a) ONE "ROAD CONSTRUCTION AHEAD" SIGN 36 x 36 (900x900) WITH A FLASHER MOUNTED ON IT APPROXIMATELY 200' (60 m) IN ADVANCE OF THE MAIN ROUTE.
 - b) THE CLOSED PORTION OF THE MAIN ROUTE SHALL BE PROTECTED BY BLOCKING WITH TYPE I, TYPE II OR TYPE III BARRICADES, 1/3 OF THE CROSS SECTION OF THE CLOSED PORTION.
2. SIDE ROAD WITH A SPEED LIMIT GREATER THAN 40 MPH (60 km/h) AS SHOWN ON THE DRAWING AND AS DIRECTED BY THE ENGINEER:
 - a) ONE "ROAD CONSTRUCTION AHEAD" SIGN 48 x 48 (1.2 m x 1.2 m) WITH A FLASHER MOUNTED ON IT APPROXIMATELY 500' (150 m) IN ADVANCE OF THE MAIN ROUTE.
 - b) BLOCKING WITH TYPE III BARRICADES, 1/2 OF THE CROSS SECTION OF THE CLOSED PORTION.
3. CONES MAY BE SUBSTITUTED FOR BARRICADES OR DRUMS AT HALF THE SPACING DURING DAY OPERATIONS. CONES SHALL BE A MINIMUM OF 28 (710) IN HEIGHT.
4. SIGNING AND THE WORK ZONE, A SINGLE HEADED ARROW (M6-1) SHALL BE USED IN LIEU OF THE DOUBLE HEADED ARROW (M6-4).
5. WHEN WORK IS BEING PERFORMED ON A SIDE ROAD OR DRIVEWAY, FOLLOW THE APPLICABLE STANDARD(S). THE DIRECTIONAL ARROW (M6-1 OR M6-4) SHALL BE COVERED OR REMOVED WHEN NO LONGER CONSISTENT WITH THE TRAFFIC CONTROL SET-UP.
6. ADVANCE WARNING SIGNS ARE TO BE OMITTED ON DRIVEWAYS UNLESS OTHERWISE SPECIFIED IN THE PLANS OR BY THE ENGINEER.
7. THE TRAFFIC CONTROL AND PROTECTION FOR SIDE ROADS, INTERSECTIONS, AND DRIVEWAYS SHALL BE INCLUDED IN THE COST OF SPECIFIED TRAFFIC CONTROL STANDARDS OR ITEMS.

All dimensions are in inches (millimeters) unless otherwise shown.

MODEL: Default
 FILE: \\nashville-prod\planroom\dat\illinois.gov\PWIDOT\Documents\DOT_Offices\Director_1\Projects\101821\CADD\Drawings\Design\DRS\4.dgn

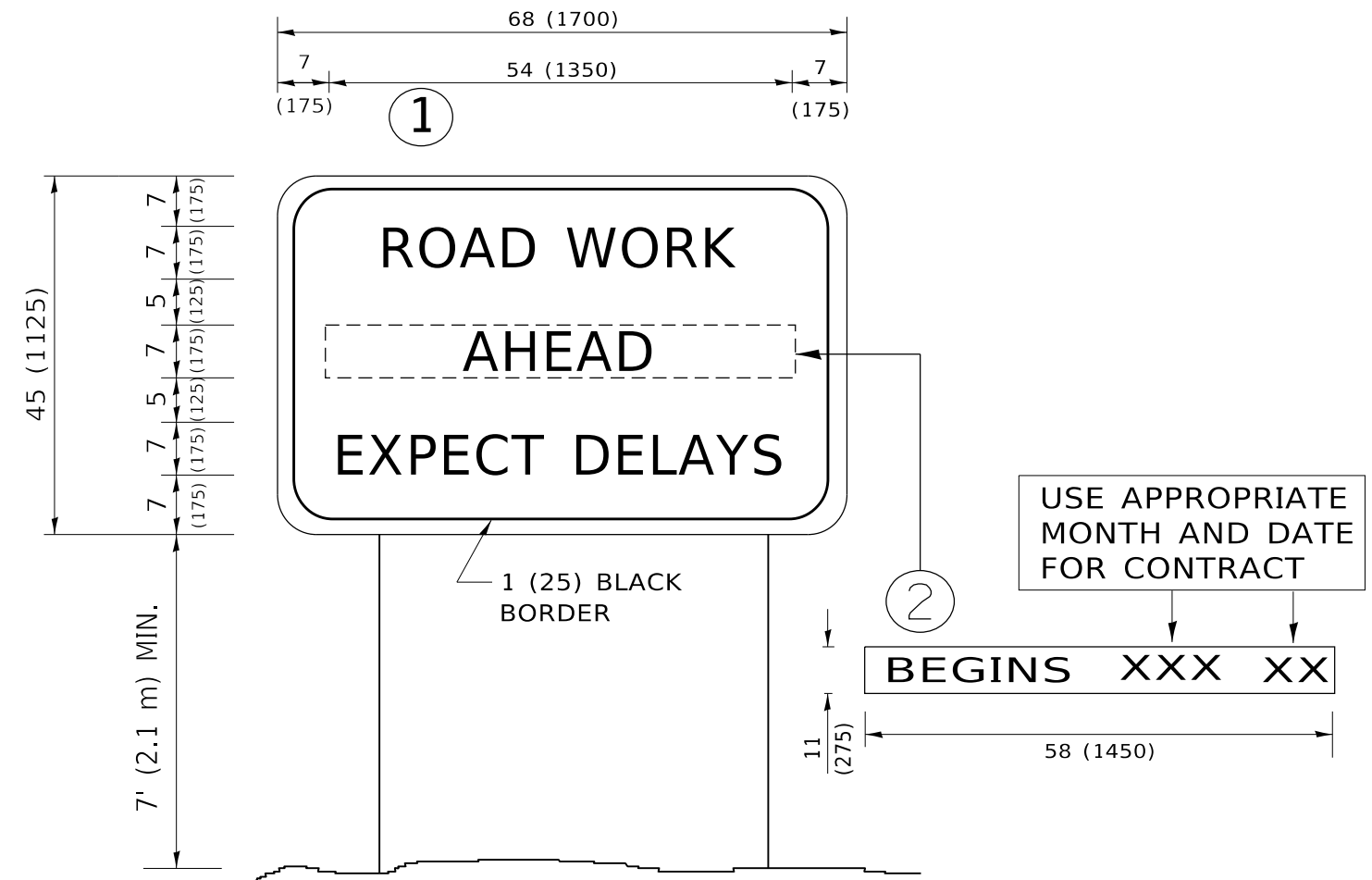
USER NAME = somool	DESIGNED - L.H.A.	REVISED - A. HOUSEH 10-15-96
PLOT SCALE = 100.0000' / in.	CHECKED -	REVISED - T. RAMMACHER 01-06-00
PLOT DATE = 10/8/2020	DATE - 06-89	REVISED - A. SCHUETZE 07-01-13
		REVISED - A. SCHUETZE 09-15-16

**STATE OF ILLINOIS
DEPARTMENT OF TRANSPORTATION**

**TRAFFIC CONTROL AND PROTECTION FOR
SIDE ROADS, INTERSECTIONS, AND DRIVEWAYS**

SCALE: NONE SHEET 1 OF 1 SHEETS STA. TO STA.

F.A. RTE.	SECTION	COUNTY	TOTAL SHEETS	SHEET NO.
VAR.	2020-231-BP	VARIOUS	35	33
	TC-10		CONTRACT NO. 62M91	
		ILLINOIS	FED. AID PROJECT	



NOTES:

1. USE BLACK LETTERING ON ORANGE BACKGROUND.
2. ERECT SIGNS IN ADVANCE OF THE LOCATION FOR THE "ROAD CONSTRUCTION AHEAD" SIGN AT LOCATIONS AS DIRECTED BY THE ENGINEER.
3. ERECT SIGN ① WITH INSTALLED PANEL ② ONE WEEK PRIOR TO THE START OF CONSTRUCTION.
4. REMOVE PANEL ② SOON AFTER THE START OF CONSTRUCTION.
5. SEE SPECIAL PROVISION FOR "TEMPORARY INFORMATION SIGNING" FOR ADDITIONAL INFORMATION.
6. ONE SIGN ASSEMBLY EQUALS 25.70 SQ. FT. (2.3 SQ. M.)
7. SHALL BE PAID FOR AS TEMPORARY INFORMATION SIGNING.

ALL DIMENSIONS ARE IN INCHES (MILLIMETERS) UNLESS OTHERWISE SHOWN.

MODEL: Default
FILE: \\nas01c.psu.edu\lanroom\data\illinois.gov\PWIDOT\Documents\DOT_Offices\Dir\etec_1\Project\101821\CADData\Design\DRS\4.dgn

USER NAME = somool	DESIGNED -	REVISED - R. MIRS 09-15-97
	DRAWN -	REVISED - R. MIRS 12-11-97
PLOT SCALE = 100.0000 ' / in.	CHECKED -	REVISED - T. RAMMACHER 02-02-99
PLOT DATE = 10/8/2020	DATE -	REVISED - C. JUCIUS 01-31-07

**STATE OF ILLINOIS
DEPARTMENT OF TRANSPORTATION**

**ARTERIAL ROAD
INFORMATION SIGN**

SCALE: NONE SHEET 1 OF 1 SHEETS STA. TO STA.

F.A. RTE.	SECTION	COUNTY	TOTAL SHEETS	SHEET NO.
VAR.	2020-231-BP	VARIOUS	35	35
	TC-22			CONTRACT NO. 62M91
		ILLINOIS		FED. AID PROJECT