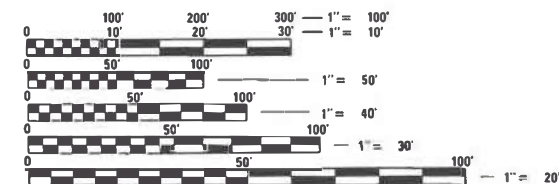


1	COVER SHEET
2	GENERAL NOTES
3 - 10	SUMMARY OF QUANTITIES
11	TYPICAL SECTIONS
12 - 16	SCHEDULES
17 - 18	PLAN & PROFILE
19	REMOVAL PLANS
20	STAGING PLANS
21	EROSION CONTROL & LANDSCAPING PLANS
22 - 55	SN 032-0075 PLANS
56 - 62	DETAILS
63 - 85	CROSS SECTIONS

LIST OF ILLINOIS DOT HIGHWAY STANDARDS

000001-08	STANDARD SYMBOLS, ABBREVIATIONS AND PATTERNS
001001-02	AREAS OF REINFORCEMENT BARS
001006	DECIMAL OF AN INCH AND OF A FOOT
280001-07	TEMPORARY EROSION CONTROL SYSTEMS
420001-09	PAVEMENT JOINTS
420401-13	PAVEMENT CONNECTOR (PCC) FOR BRIDGE APPROACH SLAB
420701-03	PAVEMENT WELDED WIRE REINFORCEMENT
442201-03	CLASS C AND D PATCHES
515001-04	NAME PLATE FOR BRIDGES
610001-09	SHOULDER INLET WITH CURB
630001-12	STEEL PLATE BEAM GUARDRAIL
630201-07	PCC/HMA STABILIZATION AT STEEL PLATE BEAM GUARDRAIL
631031-17	TRAFFIC BARRIER TERMINAL, TYPE 6
635001-02	DELINEATORS
667101-02	PERMANENT SURVEY MARKERS
701001-02	OFF-ROAD OPERATIONS 2L, 2W, MORE THAN 15' (4.5 m) AWAY
701006-05	OFF-ROAD OPERATIONS 2L, 2W, 15' (4.5 m) TO 24" (600 mm) FROM PAVEMENT EDGE
701011-04	OFF-ROAD MOVING OPERATIONS 2L, 2W, DAY ONLY
701201-05	LANE CLOSURE, 2L, 2W, DAY ONLY, FOR SPEEDS ≥ 45 MPH
701301-04	LANE CLOSURE, 2L, 2W, SHORT TIME OPERATIONS
701306-04	LANE CLOSURE, 2L, 2W, SLOW MOVING OPERATIONS DAY ONLY, FOR SPEEDS ≥ 45 MPH
701311-03	LANE CLOSURE, 2L, 2W, MOVING OPERATIONS - DAY ONLY
701321-18	LANE CLOSURE, 2L, 2W, BRIDGE REPAIR WITH BARRIER
701901-08	TRAFFIC CONTROL DEVICES
704001-08	TEMPORARY CONCRETE BARRIER
725001-01	OBJECT AND TERMINAL MARKERS
780001-05	TYPICAL PAVEMENT MARKINGS
781001-04	TYPICAL APPLICATIONS RAISED REFLECTIVE PAVEMENT MARKERS
782006-01	GUARDRAIL AND BARRIER WALL REFLECTOR MOUNTING DETAILS



FULL SIZE PLANS HAVE BEEN PREPARED USING STANDARD ENGINEERING SCALES. REDUCED SIZED PLANS WILL NOT CONFORM TO STANDARD SCALES. IN MAKING MEASUREMENTS ON REDUCED PLANS, THE ABOVE SCALES MAY BE USED.

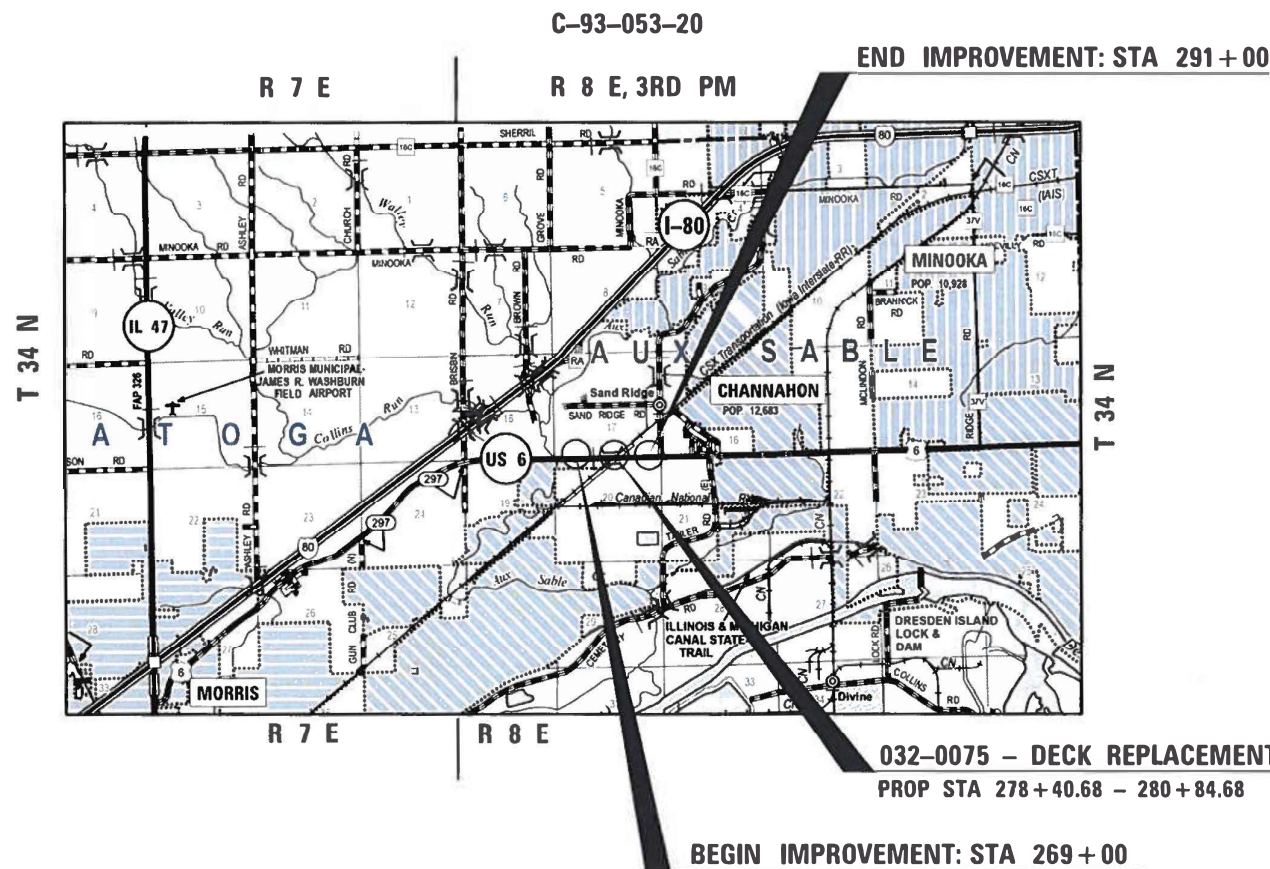
J.U.L.I.E.
JOINT UTILITY LOCATION INFORMATION FOR EXCAVATION
1-800-892-0123
OR 811

PROJECT ENGINEER: BRAD DUNCAN, P.E.
UNIT CHIEF: LUIS CALDERON, P.E.
DISTRICT 3 NO. (815) 434-6131
CONTRACT NO. 66E45

STATE OF ILLINOIS
DEPARTMENT OF TRANSPORTATION

**PROPOSED
HIGHWAY PLANS**

FAU ROUTE 392 (US 6)
SECTION (G)VB-1
PROJECT STP-5FZO(460)
DECK REPLACEMENT &
SUBSTRUCTURE REPAIRS
GRUNDY COUNTY



GROSS LENGTH = 2200 FT. = 0.417 MILES
NET LENGTH = 2000 FT. = 0.417 MILES

F.A.U. RTE.	SECTION	COUNTY	TOTAL SHEETS	SHEET NO.
392	(G)VB-1	GRUNDY	85*	1
ILLINOIS			CONTRACT NO. 66E45	

*85 + 1 = 86 TOTAL SHEETS
D-93-023-20



FUNCTIONAL CLASSIFICATION
URBAN MINOR ARTERIAL
ADT (2019): 5,950
SU = 4.2% MU = 4.2% PV = 91.6%

STATE OF ILLINOIS
DEPARTMENT OF TRANSPORTATION

SUBMITTED October 15, 2020
James Howard REGIONAL ENGINEER
December 4, 2020
Scott A. Elk ENGINEER OF DESIGN AND ENVIRONMENT
December 4, 2020
James J. ... DIRECTOR OF HIGHWAYS PROJECT IMPLEMENTATION

PRINTED BY THE AUTHORITY
OF THE STATE OF ILLINOIS

CODE NO.	ITEM	UNIT	TOTAL QUANTITY	CONSTRUCTION CODE	
				STP-URB 80% FED/20% STATE ROADWAY	STP-URB 80% FED/20% STATE BRIDGE
				0005	0013
				GRUNDY	032-0075
20100110	TREE REMOVAL (6 TO 15 UNITS DIAMETER)	UNIT	600	600	
20100210	TREE REMOVAL (OVER 15 UNITS DIAMETER)	UNIT	423	423	
20101000	TEMPORARY FENCE	FOOT	163	163	
20200100	EARTH EXCAVATION	CU YD	177	177	
20400800	FURNISHED EXCAVATION	CU YD	6	6	
21400100	GRADING AND SHAPING DITCHES	FOOT	1120	1120	
25000210	SEEDING, CLASS 2A	ACRE	0.6	0.6	
25000300	SEEDING, CLASS 3	ACRE	0.8	0.8	
25000400	NITROGEN FERTILIZER NUTRIENT	POUND	127	127	
25000500	PHOSPHORUS FERTILIZER NUTRIENT	POUND	127	127	
25000600	POTASSIUM FERTILIZER NUTRIENT	POUND	127	127	
25100115	MULCH, METHOD 2	ACRE	0.5	0.5	
25100630	EROSION CONTROL BLANKET	SQ YD	4271	4271	
28000250	TEMPORARY EROSION CONTROL SEEDING	POUND	141	141	

* SPECIALTY ITEM

FILE NAME =	USER NAME = calderon1	DESIGNED -	REVISED -
et:\pwork\pwork\calderon1\0419536\0366E45-sh1-500.dgn		DRAWN -	REVISED -
PLOT SCALE = 100.0000' / in.		CHECKED -	REVISED -
PLOT DATE = 8/19/2020		DATE -	REVISED -

**STATE OF ILLINOIS
DEPARTMENT OF TRANSPORTATION**

SUMMARY OF QUANTITIES

SCALE: SHEET OF SHEETS STA. TO STA.

F.A.U. RTE.	SECTION	COUNTY	TOTAL SHEETS	SHEET NO.
392	(G)VB-1	GRUNDY	85	3
			CONTRACT NO. 66E45	
ILLINOIS FED. AID PROJECT				

CODE NO.	ITEM	UNIT	TOTAL QUANTITY	CONSTRUCTION CODE	
				STP-URB 80% FED/20% STATE	STP-URB 80% FED/20% STATE
				ROADWAY	BRIDGE
				0005 GRUNDY	0013 032-0075
* 78100100	RAISED REFLECTIVE PAVEMENT MARKER	EACH	28	28	
* 78200005	GUARDRAIL REFLECTORS, TYPE A	EACH	28	28	
78300200	RAISED REFLECTIVE PAVEMENT MARKER REMOVAL	EACH	28	28	
X0326649	LINEAR DELINEATOR PANELS, 6 INCH	EACH	6	6	
X0327809	LINEAR DELINEATOR PANELS, 4 INCH	EACH	48	48	
X0327980	PAVEMENT MARKING REMOVAL - WATER BLASTING	SQ FT	799	799	
X4401198	HOT-MIX ASPHALT SURFACE REMOVAL, VARIABLE DEPTH	SQ YD	2514	2514	
X6050700	REMOVE INLET BOX	EACH	8	8	
Z0073100	TEMPORARY SHORING	EACH	5		5
Z0001899	JACK AND REMOVE EXISTING BEARINGS	EACH	16		16
Z0004552	APPROACH SLAB REMOVAL	SQ YD	196	196	
Z0005216	HOT-MIX ASPHALT STABILIZATION 6" AT STEEL PLATE BEAM GUARD RAIL	SQ YD	1288	1288	
Z0007112	CONTAINMENT AND DISPOSAL OF LEAD PAINT CLEANING RESIDUES	L SUM	1		1
Z0013798	CONSTRUCTION LAYOUT	L SUM	1	1	

* SPECIALTY ITEM

FILE NAME =	USER NAME = calderon1	DESIGNED -	REVISED -	STATE OF ILLINOIS DEPARTMENT OF TRANSPORTATION	SUMMARY OF QUANTITIES				F.A.U. RTE.	SECTION	COUNTY	TOTAL SHEETS	SHEET NO.
c:\pwwork\pwwork\calderon1\0419536\0366E45-sh1-500.dgn	DRAWN -	REVISED -	REVISED -						392	(G)VB-1	GRUNDY	85	9
PLOT SCALE = 100.0000' / 1in.	CHECKED -	REVISED -	REVISED -		SCALE: SHEET OF SHEETS STA. TO STA.				CONTRACT NO. 66E45				
PLOT DATE = 8/19/2020	DATE -	REVISED -	REVISED -		ILLINOIS FED. AID PROJECT								

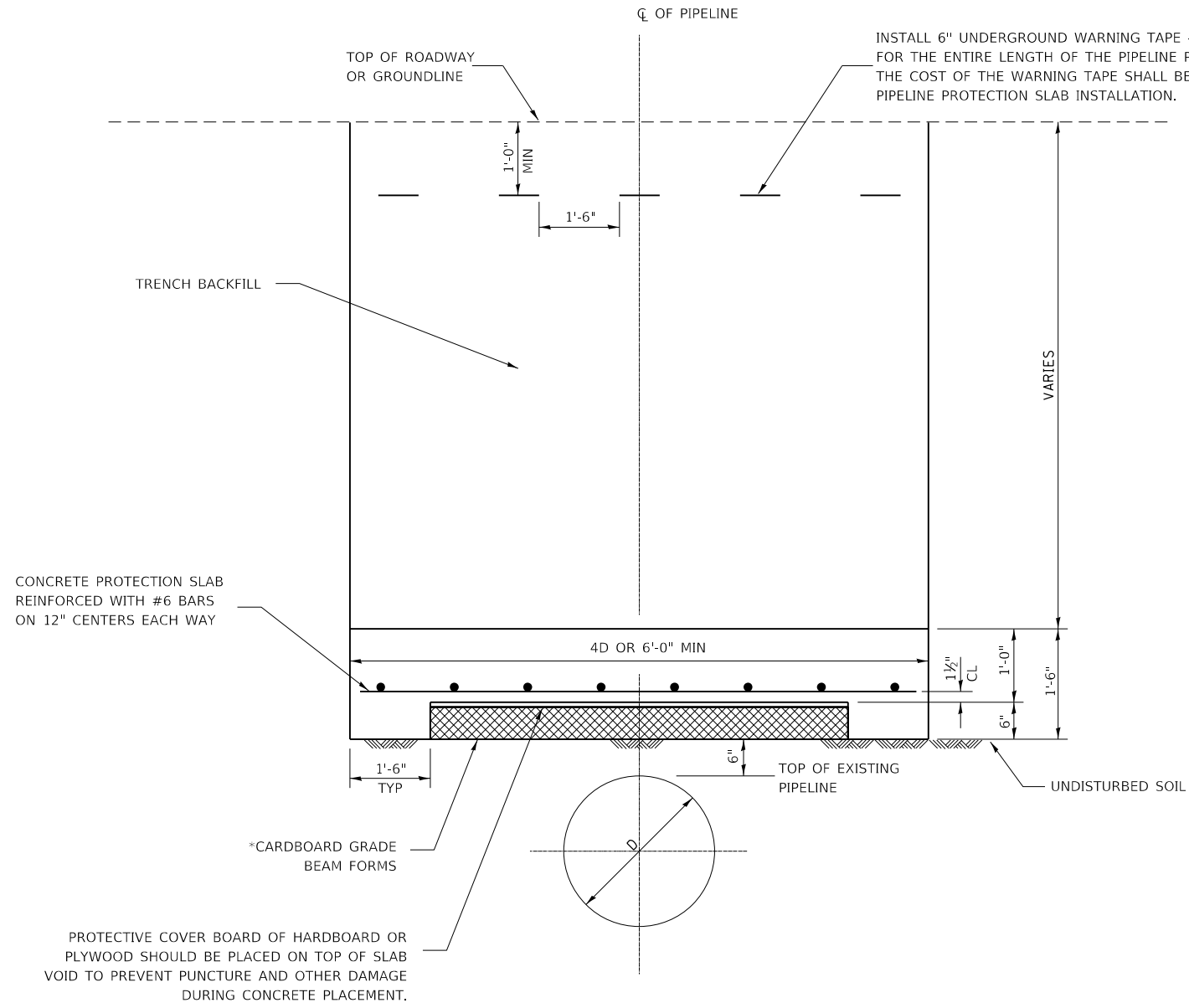
TRAFFIC CONTROL & STAGING SCHEDULE									
	TEMP PAVT MARK 4"	TEMP PAVT MARK 24"	PAVT MARK REM WATER BLAST	TEMPORARY CONCRETE BARRIER WALL		IMPACT ATTENUATOR TEMPORARY NON-REDIRECTIVE TEST LVL 3		TEMP RUMBLE STRIPS	TEMP BRIDGE TRAFF SIGNALS
	W	W		INSTALL	RELOCATE	INSTALL	RELOCATE		
	FOOT	FOOT	SQ FT	FOOT	FOOT	EACH	EACH	EACH	EACH
STAGE 1									
274+90 TO 284+85	995	24	380						0.5
276+44 TO 282+82				662.5		2			
SEE HWY STND 701321								6	
STAGE 1	995	24	380	662.5	0	2	0	6	0.5
STAGE 2									
274+32 TO 285+45	1,113	24	419						0.5
276+33 TO 282+92				662.5		2			
SEE HWY STND 701321								6	
STAGE 2	1,113	24	419	0	662.5	0	2	6	0.5
GRAND TOTALS	2,108	48	799	662.5	662.5	2	2	12	1

DRAINAGE SCHEDULE						
LOCATION		SIDE LT/RT	GRADING & SHAPING DITCHES FOOT	STONE DUMPED RIPRAP CL A3 (1) SQ YD	FILTER FABRIC SQ YD	DIRECTION OF FLOW (2)
FROM	TO					
271+00	276+50	LT	550			EAST
273+00	276+50	RT	350			EAST
NW BRIDGE EMBANKMENT		LT	25			NORTH
NE BRIDGE EMBANKMENT		LT	80			NORTH
SW BRIDGE EMBANKMENT		RT	90			SOUTH
SE BRIDGE EMBANKMENT		RT	25			SOUTH
269+55		LT		110	110	
269+55		RT		120	120	
290+00		LT		120	120	
290+00		RT		120	120	
TOTALS			1120	470	470	

(1) - RIPRAP THICKNESS SHALL BE OF 18 INCHES (SEE DETAILS)
(2) - GRADING & SHAPING DITCHES AT BRIDGE EMBANKMENT CONES SHALL REMOVE SURPLUS SILT/EARTHEN MATERIAL TO RESTORE DRAINAGE FROM EXISTING PIERS TO NEARBY DITCHES (SEE ORIGINAL BRIDGE CONSTRUCTION DRAINAGE PLAN)

REMOVAL ITEMS SCHEDULE								
LOCATION	LENGTH	PAVT REMOVAL	APPROACH SLAB REMOVAL	GR REM	CURB REMOVAL (HMA)	PAVED SHLDR REMOVAL (1)	REMOVE INLET BOX	EARTH EX (2)
		FOOT	SQ YD	SQ YD	FOOT	FOOT	SQ YD	EACH
WEST OF STRUCTURE								
269+00.00 TO 278+41.48	941.5			1,844		299		
277+69.00 TO 278+21.48	52.5	256.6						
278+21.48 TO 278+41.48	20.0		97.8					
269+60.00 TO 277+69.00	809.0				1,618			
269+55.00	LT & RT						2	92
273+60.00	LT & RT						2	
EAST OF STRUCTURE								
280+83.88 TO 291+00.00	1016.1			1,992		324		
280+83.88 TO 281+03.88	20.0		97.8					
281+03.88 TO 281+56.36	52.5	256.6						
281+56.00 TO 289+95.00	839.0				1,678			
286+60.00	LT & RT						2	
290+00.00	LT & RT						2	86
TOTALS		513	196	3,836	3,296	623	8	177

(1) - PAVED SHOULDER REMOVAL TO REMOVE EXIST HMA STABILIZATION FROM GUARDRAIL
(2) - SEE SPECIAL PROVISION
(3) - ENVIRONMENTAL RESTRICTONS EXIST FOR EARTHEN MATERIALS - PLEASE SEE SP



DIAMETER OF PIPE (D)	WIDTH OF SLAB (4D)
2" - 20"	6'-0"
24"	8'-0"
28"	9'-4"
36"	12'-0"
42"	14'-0"

DESIGNED IN ACCORDANCE WITH TITLE 49-PART 192 MINIMUM FEDERAL SAFETY STANDARDS AND ASME GUIDE FOR GAS PIPING SYSTEMS, LATEST EDITION.

* SureVoid Products
 SLAB VOID HEAVY DUTY STRENGTH
 WORKING LOAD OF 1500 PSF.
 END CAPS REQUIRED.

UTILITY PROTECTION PAD SCHEDULE					
PIPELINE	SIZE	STATION	SLAB SIZE	SQ YD	NOTE
ONEOK	16"	282+00-283+00 LT (ditch)	6' x 20'	13	Size may be adjusted with approval of the Engineer
TOTALS				13	

FILE NAME =	USER NAME = calderon1	DESIGNED -	REVISED -
es:\pwork\pwork\calderon1\0419536\0366E45-shit-details.dgn		DRAWN -	REVISED -
	PLOT SCALE = 100.0000' / 1in.	CHECKED -	REVISED -
	PLOT DATE = 12/4/2020	DATE -	REVISED -

STATE OF ILLINOIS
 DEPARTMENT OF TRANSPORTATION

UTILITY PROTECTION PAD DETAILS			
SCALE:	SHEET	OF SHEETS	STA. TO STA.

F.A.U. RTE.	SECTION	COUNTY	TOTAL SHEETS	SHEET NO.
392	(G)VB-1	GRUNDY	86	56B
ILLINOIS FED. AID PROJECT			CONTRACT NO. 68-45	