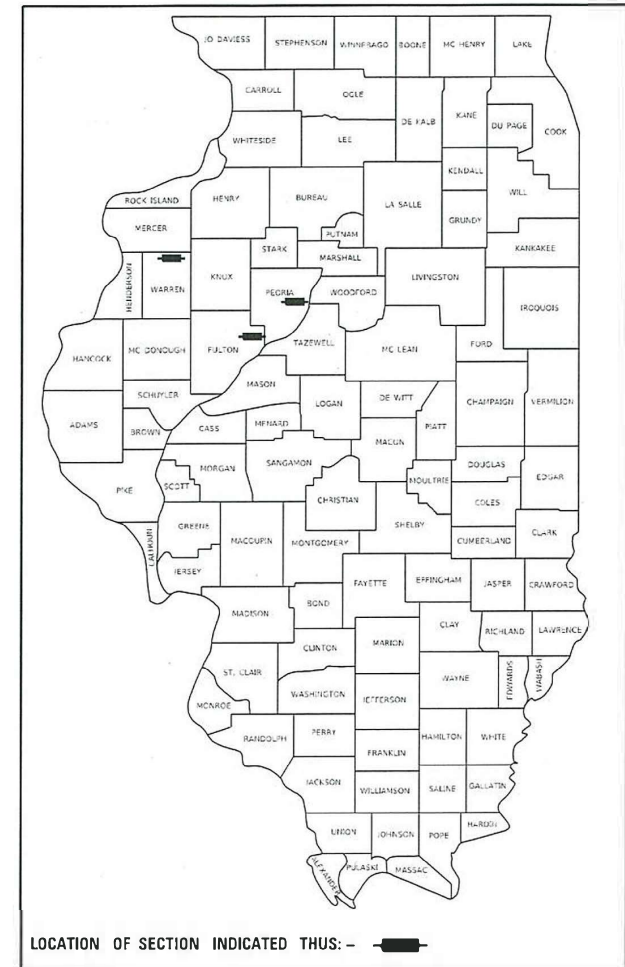


STATE OF ILLINOIS  
DEPARTMENT OF TRANSPORTATION

F.A. RTE.	SECTION	COUNTY	TOTAL SHEETS	SHEET NO.
VAR.	D4 TREE REMOVAL 2021	VARIOUS	21	1
		ILLINOIS	CONTRACT NO. 68G07	

D-94-009-21



**INDEX OF SHEETS**

- 1 COVER SHEET
- 2 GENERAL NOTES & JOBSITE SCHEDULE
- 3 STATUS OF UTILITIES
- 4 SUMMARY OF QUANTITIES
- 5-7 TREE REMOVAL LOCATION 1
- 8-9 TREE REMOVAL LOCATION 2
- 10-21 TREE REMOVAL LOCATION 3

**PROPOSED  
HIGHWAY PLANS**

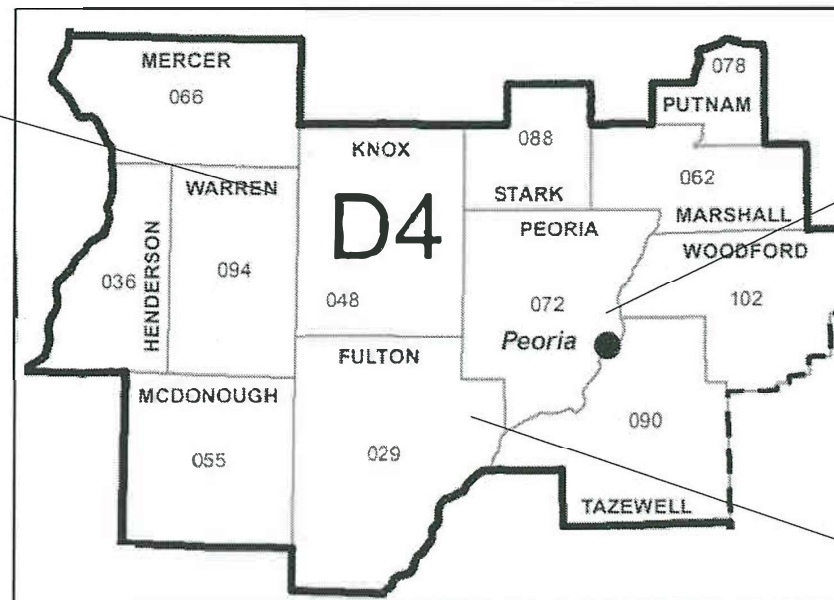
F.A.P. ROUTES 317 (US 24), 646 (IL 40), 310 (US 67)  
D4 TREE REMOVAL 2021  
FULTON, PEORIA, WARREN COUNTIES

**HIGHWAY STANDARDS**

- 701001-02
- 701006-05
- 701101-05
- 701201-05
- 701606-10
- 701801-06
- 701901-08
- 720011-01

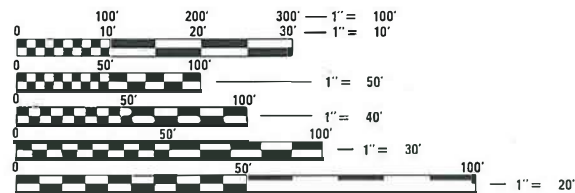
C-94-013-21

LOCATION #3 US 67  
NORTH OF MONMOUTH



LOCATION #2 IL 40  
@ KNOXVILLE AVE.  
& MT. HAWLEY RD

LOCATION #1 US 24  
@ COPPERAS CREEK



FULL SIZE PLANS HAVE BEEN PREPARED USING STANDARD ENGINEERING SCALES. REDUCED SIZED PLANS WILL NOT CONFORM TO STANDARD SCALES. IN MAKING MEASUREMENTS ON REDUCED PLANS, THE ABOVE SCALES MAY BE USED.

J.U.L.I.E.  
JOINT UTILITY LOCATION INFORMATION FOR EXCAVATORS  
1-800-892-0123  
OR 811

PROJECT ENGINEER RICH DOTSON (309-671-3455)  
PROJECT MANAGER RON NOLTE (309-671-3470)

CONTRACT NO. 68G07

**PROJECT DESCRIPTION**  
TREE REMOVAL IN VARIOUS ROUTES AND COUNTIES.

STATE OF ILLINOIS  
DEPARTMENT OF TRANSPORTATION

SUBMITTED Oct 23 2020  
Ronald A. Garnett RSG  
REGIONAL ENGINEER

December 4, 2020  
[Signature]  
ENGINEER OF DESIGN AND ENVIRONMENT

December 4, 2020  
[Signature]  
DIRECTOR OF HIGHWAYS PROJECT IMPLEMENTATION

**PRINTED BY THE AUTHORITY  
OF THE STATE OF ILLINOIS**

**GENERAL NOTES**

**105.06 AVAILABILITY OF ELECTRONIC FILES**

MicroStation and GEOPAK files of this project will be made available to the Contractor after contract award. If there is a conflict between the electronic files and the printed contract plans and documents, the printed contract plans and documents shall take precedence over the electronic files. The Contractor shall accept all risk associated with using the electronic files and shall hold the Department harmless for any errors or omissions in the electronic files and the data contained therein. Errors or delays resulting from the use of the electronic files by the Contractor shall not result in an extension of time for any interim or final completion date or shall not be considered cause for additional compensation. The Contractor shall not use, share, or distribute these electronic files except for the purpose of constructing this contract. Any claims by third parties due to use or errors shall be the responsibility of the Contractor. The Contractor shall include this disclaimer with the transfer of these electronic files to any other parties and shall include appropriate language binding them to similar responsibilities.

**204.00 ENVIRONMENTAL REVIEWS**

Prior to the use of any proposed borrow areas, use areas (temporary access roads, detours, run-arounds, etc.) and/or waste areas, the Contractor shall file the required environmental resource request surveys according to Section 107.22 of the Standard Specifications. These surveys are required in order for the Department to conduct cultural and biological resource surveys for the proposed site.

The required environmental resource documentation shall include the following:

- \* BDE Form 2289 (Borrow Site Review)
- \* BDE Form 2290 (Waste/Use Area Review)
- \* A location map showing the size limits and location of the use area
- \* Color photographs depicting the use area
- \* Borrow Area Entry Agreement form – D4 PI0101

Prior to any waste materials being removed from the construction site the required environmental resource surveys shall be obtained and filed by the Contractor. Excess waste products removed from the construction site shall be disposed of as required in Section 202.03 of the Standard Specifications.

Any protruding metal bars shall be removed prior to the disposal of broken concrete at approved disposal sites.

Please note that a minimum of four weeks shall be allowed for the District to obtain the required waste site environmental clearances and six weeks for the required borrow site environmental clearances.

	67100100	Z0013798	X7010216
LOCATION	MOBILIZATION	CONSTRUCTION LAYOUT	TRAFFIC CONTROL AND PROTECTION, (SPECIAL)
	L SUM	L SUM	LSUM
LOCATION 1, 2, AND 3	1.0	1.0	1.0

\*SEE SUMMARY OF QUANTITIES FOR BREAKDOWN OF QUANTITIES FOR EACH LOCATION

MODEL: Default  
FILE NAME: p:\161600\m00\04\Illinois\gov\FWIDOT\Documents\1007\_Offices\District\_4\Projects\Squad\_6\_616607\_Tree\_Removal\Plan\_details.dgn

USER NAME = elderzsl	DESIGNED -	REVISED -	<b>STATE OF ILLINOIS DEPARTMENT OF TRANSPORTATION</b>	<b>GENERAL NOTES &amp; JOBSITE SCHEDULE</b>	F.A. RTE.	SECTION	COUNTY	TOTAL SHEETS	SHEET NO.
PLOT SCALE = 2.0306 ' / in.	DRAWN -	REVISED -			VAR.	D4 TREE REMOVAL 2021	VARIOUS	21	2
PLOT DATE = 10/22/2020	CHECKED -	REVISED -			CONTRACT NO. 68G07				
	DATE -	REVISED -			SCALE:	SHEET	OF	SHEETS	STA.

MODEL: Default  
 FILE NAME: p:\p1\planroom\fa\_illinois\proj\WDDOT\Documents\DOT\_Offices\BStierich\_4\Projects\Squad\_6\_2016\G07\_Tree Removal\Plan\_details.dgn

Route	Utility	Contact	Phone	Status
<b>US 24</b>	Ameren Illinois (Electric)	Quinton Snyder	217-653-1439	Caution
	Ameren Illinois (Gas)	Quinton Snyder	217-653-1439	Caution
	AT & T (Distribution)	Nathan Ciota	309-530-6844	Relocate
<b>US 67</b>	Ameren Illinois (Electric)	Paul Reinertsen	309-368-6607	Caution
	Comcast	Mark Wabel	309-303-2037	Caution
	Frontier Communications	Craig Young	309-373-9350	Caution
	Geneseo Communications	Ted Mattan	309-944-8030	Caution
<b>IL 40</b>	Ameren Illinois (Electric)	Jon Reick	309-258-3901	Caution
	Comcast	Mark Wabel	309-303-2037	Caution
	Bluebird	Brian Art	847-650-1348	Caution
	GPSD	John Boyle	309-678-9035	To Be Determined
	Windstream	Mark Mills	217-460-0002	Caution

USER NAME = elderzist	DESIGNED -	REVISED -
	DRAWN -	REVISED -
PLOT SCALE = 2.0380" / In.	CHECKED -	REVISED -
PLOT DATE = 10/23/2020	DATE -	REVISED -

**STATE OF ILLINOIS**  
**DEPARTMENT OF TRANSPORTATION**

STATUS OF UTILITIES	
SCALE:	SHEET OF SHEETS STA. TO STA.

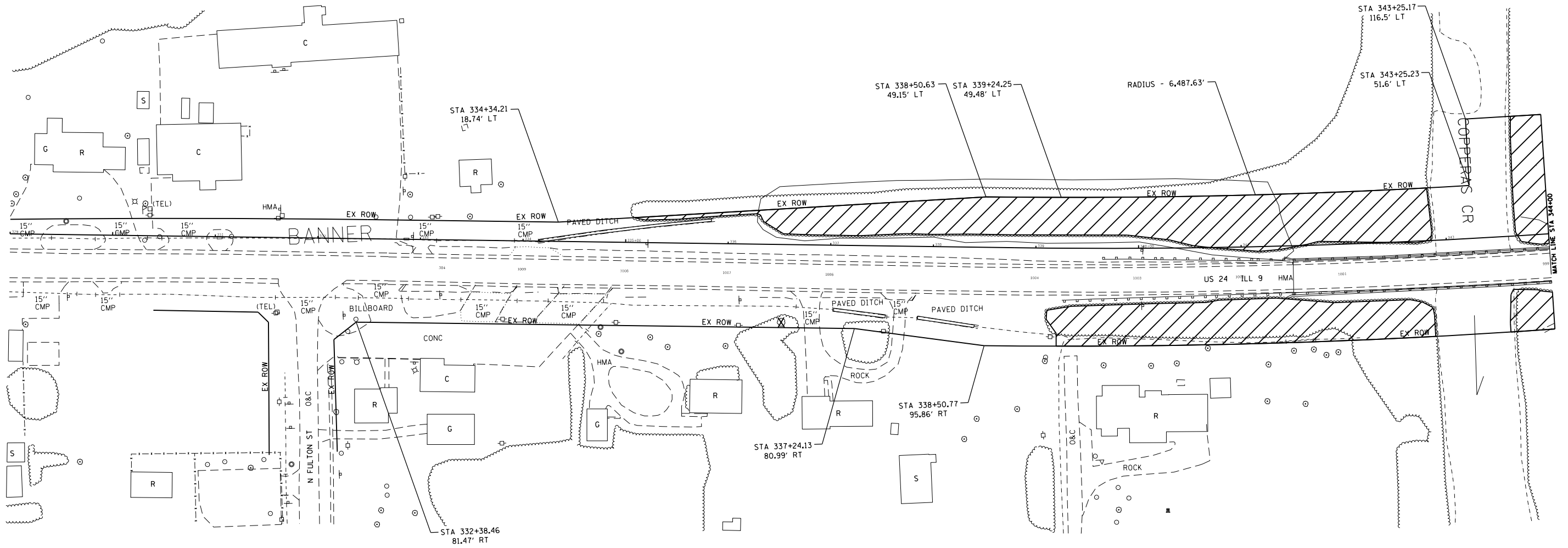
F.A. RTE.	SECTION	COUNTY	TOTAL SHEETS	SHEET NO.
VAR.	D4 TREE REMOVAL 2021	VARIOUS	21	3
CONTRACT 68G07				
ILLINOIS FED. AID PROJECT				

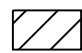



MODEL: Default  
 FILE NAME: p:\w\planroom\dtd\illinois\p\WIDOT\Documents\DOT\_Offices\District\_4\Projects\Squad\_6\_6168G07\_Tree\_Removal\US24\_Plan.dgn

LOCATION 1					
X2010350 - TREE REMOVAL, ACRES (SPECIAL)					
LOCATION	STA	TO	STA		ACRES
US 24					
1	335+08.34	TO	342+86.17	LT/RT	0.61
2	339+10.55	TO	342+85.14	RT	0.34
3	343+57.7	TO	344+79.5	RT	0.07
4	343+67.87	TO	344+37.74	LT/RT	0.16
5	344+82.1	TO	355+06.35	LT	1.14
6	350+90.95		352+97.1	RT	0.02
ROSKAMP ROAD					
7	62+41.58	TO	63+40.29	LT	0.03
8	62+82.43	TO	63.44.4	RT	0.01
SUBTOTAL					2.39
TOTAL					2.50

LOCATION 1		
LOCATION	X2010310 - TREE REMOVAL (SPECIAL)	
STATION	OFFSET	UNIT
336+52.7	76' RT	16.0
346+28	87.3' RT	6.0
346+29	87.3' RT	6.0
346+30	87.3' RT	7.0
346+31	87.3' RT	7.0
346+32	87.3' RT	7.0
347+53.5	87.6' RT	6.0
347+53.6	87.6' RT	6.0
347+53.7	87.6' RT	6.0
349+97	85' RT	6.0
349+98	85' RT	6.0
357+55	85' LT	17.0
357+56	85' LT	7.0
357+57	85' LT	12.0
357+58	85' LT	10.0
357+59	85' LT	18.0
TOTAL		143.0



 TREE REMOVAL, ACRES (SPECIAL)  
 TREE REMOVAL (SPECIAL)

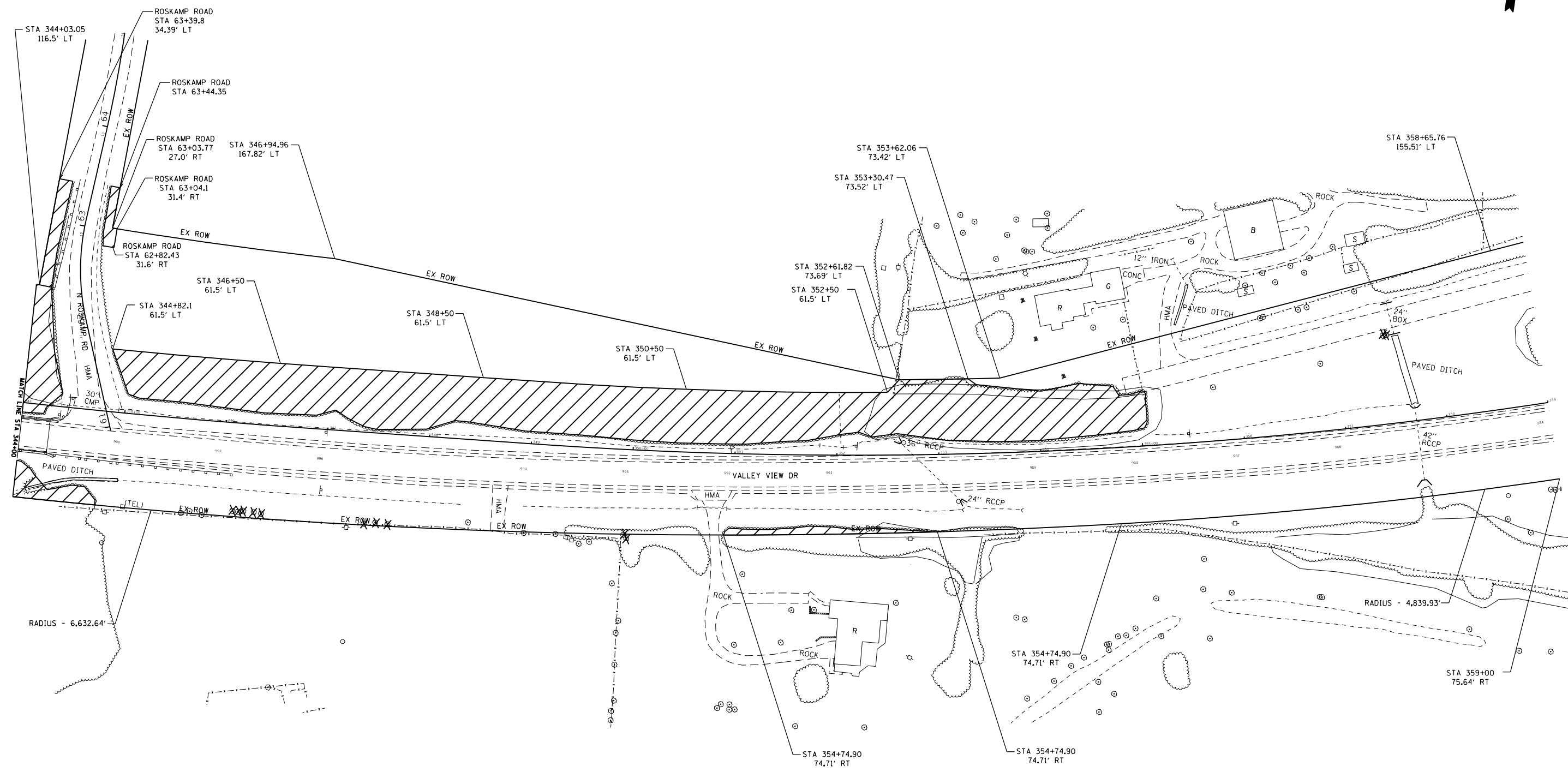
MODEL: Default  
 FILE NAME: p:\gplntroom\del\illinois\gpr\p\DOT\Documents\DOT\_Offices\District 4\Projects\Squad 6\_a\68G07\_Tree Removal\US24\_Plan.dgn

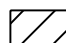

USER NAME = elderzsl	DESIGNED -	REVISED -
PLOT SCALE = 102.7184' / in.	DRAWN -	REVISED -
PLOT DATE = 10/22/2020	CHECKED -	REVISED -
	DATE -	REVISED -

**STATE OF ILLINOIS**  
**DEPARTMENT OF TRANSPORTATION**

<b>LOCATION 1 TREE REMOVAL</b>	
SCALE:	SHEET OF SHEETS STA. TO STA.

F.A. RTE.	SECTION	COUNTY	TOTAL SHEETS	SHEET NO.
VAR.	D4 TREE REMOVAL 2021	ILLINOIS	21	6
CONTRACT NO. 68G07				
ILLINOIS FED. AID PROJECT				



 TREE REMOVAL, ACRES (SPECIAL)  
 TREE REMOVAL (SPECIAL)

MODEL: Del.dwg  
 FILE NAME: s:\projects\illinois\p1\mtdot\documents\dot\offices\del\del\_4\projects\illinois\p1\mtdot\documents\dot\p1\mtdot.dwg

USER NAME = eklerzsl	DESIGNED -	REVISED -
	DRAWN -	REVISED -
PLOT SCALE = 102.7184' / in.	CHECKED -	REVISED -
PLOT DATE = 10/22/2020	DATE -	REVISED -

**STATE OF ILLINOIS**  
**DEPARTMENT OF TRANSPORTATION**

**LOCATION 1 TREE REMOVAL**

SCALE: SHEET OF SHEETS STA. TO STA.

F.A. RTE.	SECTION	COUNTY	TOTAL SHEETS	SHEET NO.
VAR.	D4 TREE REMOVAL 2021	VARIOUS	21	7
CONTRACT NO. 68G07				
ILLINOIS FED. AID PROJECT				



SCHEDULE OF QUANTITIES

LOCATION	CHANGEABLE MESSAGE SIGN*	DETOUR SIGNING	TREE REMOVAL, ACRES (SPECIAL)**
	CAL DA	L SUM	ACRES
LOCATION 2	15.0	1.0	0.27
TOTAL	15.0	1.0	0.25

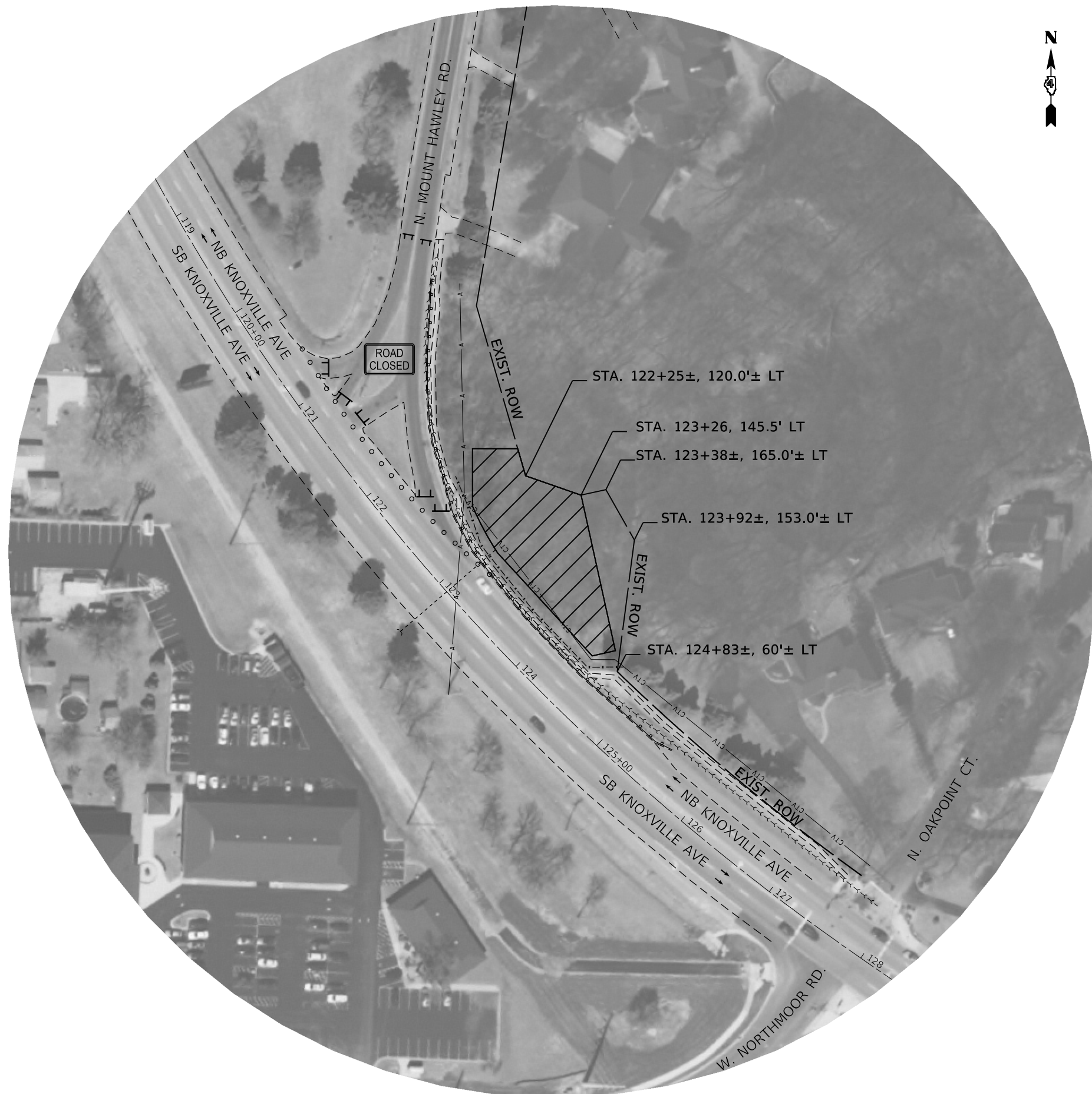
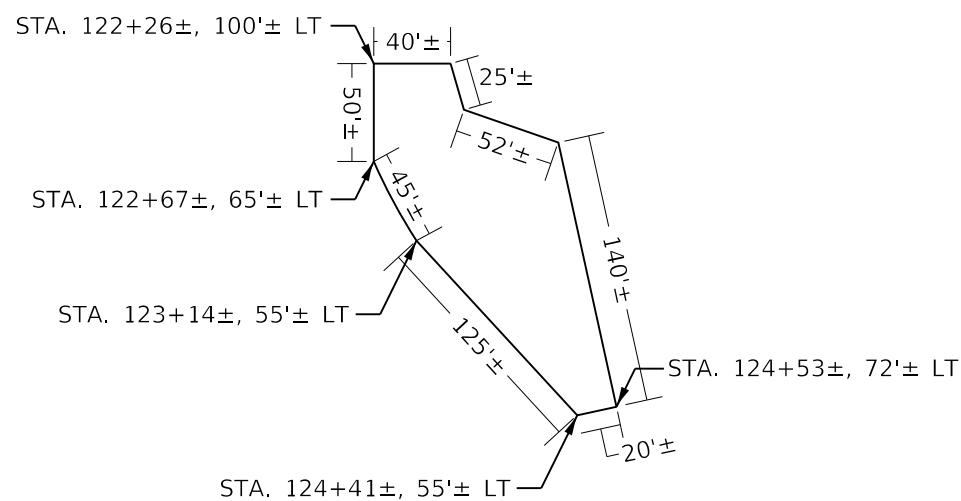
\*3 Boards @ 5 days each

\*\*Acres rounded to the nearest 0.25 ACRES



TREE REMOVAL, ACRES (SPECIAL) = 0.27 ACRES  
(SEE DETAIL A FOR APPROX. DIMENSIONS)

DETAIL A



MODEL: Default  
 FILE: \\blairc:\pub\blairroom\dat\links\gov\PIWDOT\Documents\DOT\_Offices\Director\_ofProjects\SQUAD\_4\Devine\Mt.Hawley-KnoxAve\Shr\_TreeRemoval.dgn

USER NAME = devineae	DESIGNED -	REVISED -
	DRAWN -	REVISED -
PLOT SCALE = 100.0000' / in.	CHECKED -	REVISED -
PLOT DATE = 10/23/2020	DATE -	REVISED -

STATE OF ILLINOIS  
DEPARTMENT OF TRANSPORTATION

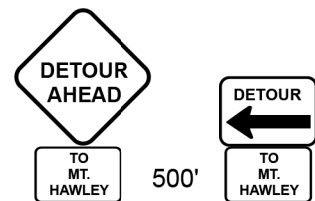
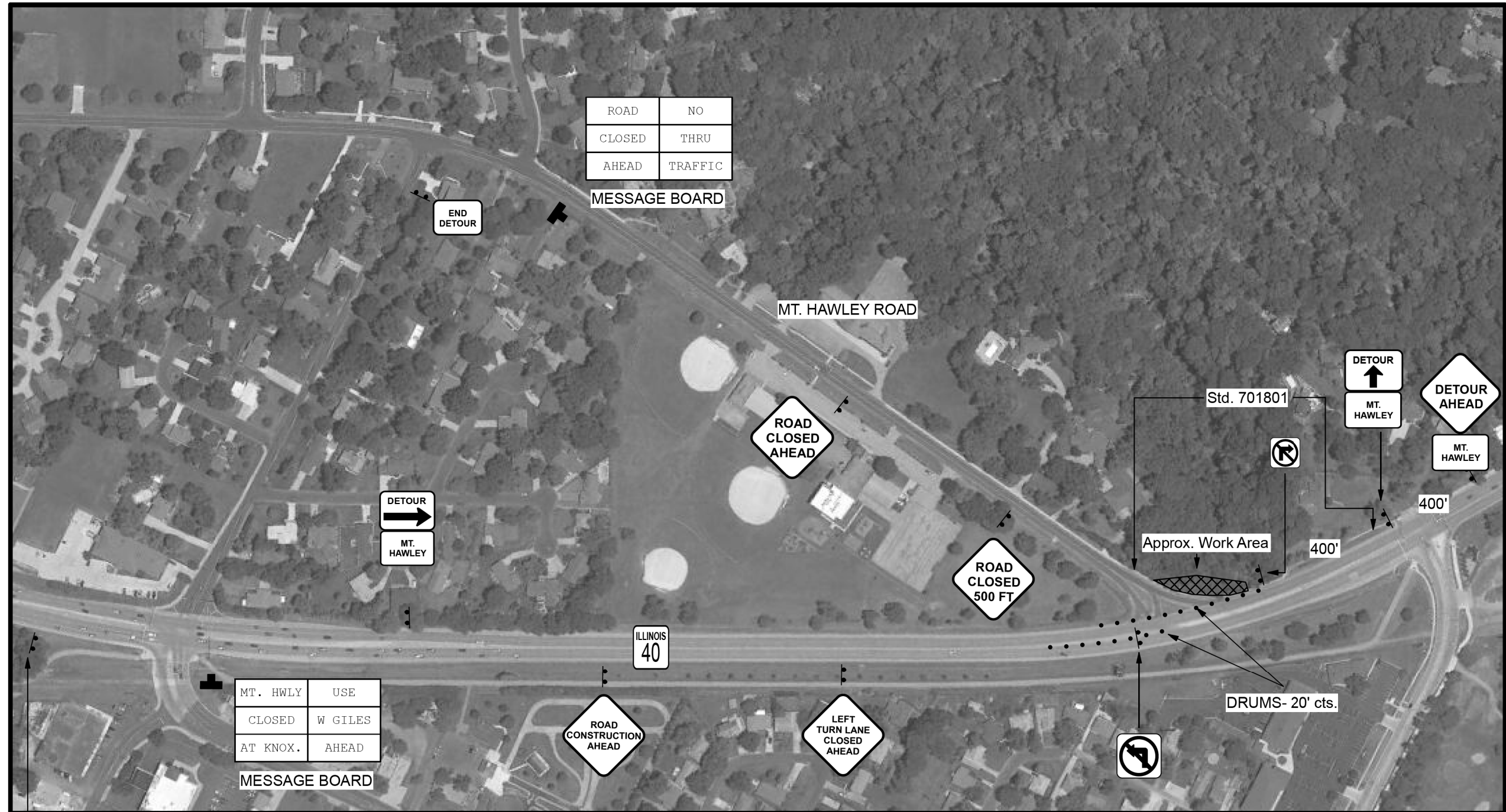
LOCATION 2  
KNOXVILLE AVE. AND N. MOUNT HAWLEY RD.

SCALE: SHEET OF SHEETS STA. TO STA.

F.A. RTE.	SECTION	COUNTY	TOTAL SHEETS	SHEET NO.
VAR.	D4 TREE REMOVAL 2021	VARIOUS	21	8
			CONTRACT NO. 68G07	
		ILLINOIS FED. AID PROJECT		



# MT. HAWLEY CLOSURE AT IL 40 DETAILS



MT. HWLY	USE
CLOSED	W GILES
AT KNOX.	AHEAD

PLACE 1000' IN ADVANCE OF W. GILES ON SB IL 40  
(NOT SHOWN ON PLANS)

MESSAGE BOARD

MESSAGE BOARDS ON MT. HAWLEY AND SB IL 40 SHALL BE IN PLACE THREE DAYS PRIOR TO CLOSURE TO ADVANCE NOTIFY THE PUBLIC.

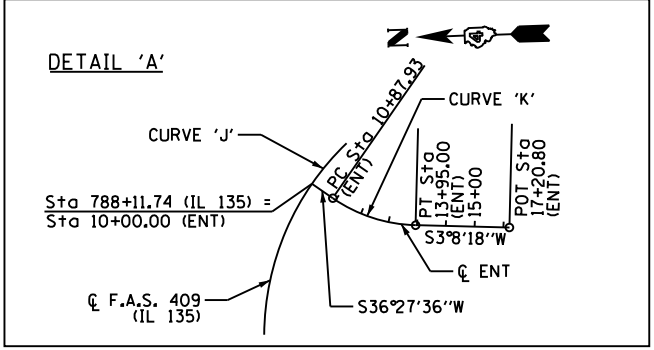
MODEL: Default  
 FILE: \\harc\p\pub\baronm.d\at\illinois\p\WIDOT\Documents\DOT\_Offices\Director\_of\Projects\Mt.Hawley-KnoxAve\Shr\_TreeRemoval.dgn

USER NAME = devineae	DESIGNED -	REVISED -
	DRAWN -	REVISED -
PLOT SCALE = 100,0000' / in.	CHECKED -	REVISED -
PLOT DATE = 10/23/2020	DATE -	REVISED -

**STATE OF ILLINOIS  
DEPARTMENT OF TRANSPORTATION**

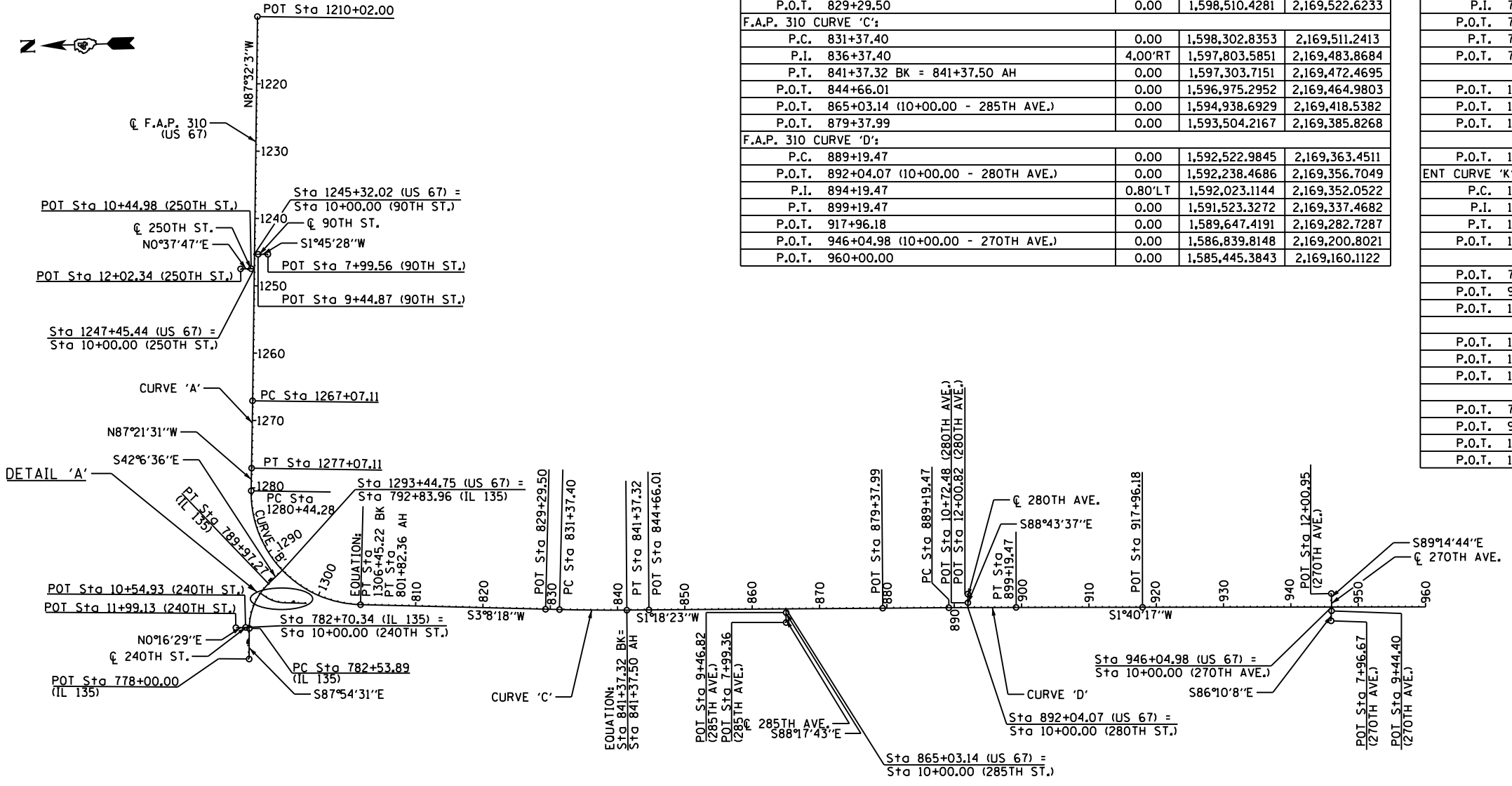
<b>LOCATION 2</b>			
<b>KNOXVILLE AVE. AND N. MOUNT HAWLEY RD.</b>			
SCALE:	SHEET	OF SHEETS	STA. TO STA.

F.A. RTE.	SECTION	COUNTY	TOTAL SHEETS	SHEET NO.
VAR.	D4 TREE REMOVAL 2021	VARIOUS	21	9
CONTRACT NO. 68G07				
ILLINOIS FED. AID PROJECT				



COORDINATE TABLE - MAINLINE			
STATION	OFFSET	NORTHING	EASTING
F.A.P. 310 (US 67)			
P.O.T. 1210+02.00	0.00	1,602,519.9752	2,178,447.9002
P.O.T. 1245+32.02 (10+00.00 - 90TH ST.)	0.00	1,602,671.8531	2,174,921.1465
P.O.T. 1247+45.44 (10+00.00 - 250TH ST.)	0.00	1,602,681.0352	2,174,707.9289
F.A.P. 310 CURVE 'A':			
P.C. 1267+07.11	0.00	1,602,765.4354	2,172,748.0723
P.I. 1272+07.11	0.38'LT	1,602,786.9477	2,172,248.5353
P.T. 1277+07.11	0.00	1,602,809.9911	2,171,749.0666
F.A.P. 310 CURVE 'B':			
P.C. 1280+44.28	0.00	1,602,825.5302	2,171,412.2558
P.O.T. 1293+44.75 (792+83.96 - IL135)	0.00	1,602,397.4923	2,170,219.0430
P.I. 1296+94.91	679.52'RT	1,602,901.6023	2,169,763.3832
P.T. 1306+45.22 BK = 801+82.36 AH	0.00	1,601,253.4513	2,169,673.0181
P.O.T. 829+29.50	0.00	1,598,510.4281	2,169,522.6233
F.A.P. 310 CURVE 'C':			
P.C. 831+37.40	0.00	1,598,302.8353	2,169,511.2413
P.I. 836+37.40	4.00'RT	1,597,803.5851	2,169,483.8684
P.T. 841+37.32 BK = 841+37.50 AH	0.00	1,597,303.7151	2,169,472.4695
P.O.T. 844+66.01	0.00	1,596,975.2952	2,169,464.9803
P.O.T. 865+03.14 (10+00.00 - 285TH AVE.)	0.00	1,594,938.6929	2,169,418.5382
P.O.T. 879+37.99	0.00	1,593,504.2167	2,169,385.8268
F.A.P. 310 CURVE 'D':			
P.C. 889+19.47	0.00	1,592,522.9845	2,169,363.4511
P.O.T. 892+04.07 (10+00.00 - 280TH AVE.)	0.00	1,592,238.4686	2,169,356.7049
P.I. 894+19.47	0.80'LT	1,592,023.1144	2,169,352.0522
P.T. 899+19.47	0.00	1,591,523.3272	2,169,337.4682
P.O.T. 917+96.18	0.00	1,589,647.4191	2,169,282.7287
P.O.T. 946+04.98 (10+00.00 - 270TH AVE.)	0.00	1,586,839.8148	2,169,200.8021
P.O.T. 960+00.00	0.00	1,585,445.3843	2,169,160.1122

COORDINATE TABLE - SIDEROADS			
STATION	OFFSET	NORTHING	EASTING
90TH STREET			
P.O.T. 7+99.56	0.00	1,602,471.5111	2,174,914.9985
P.O.T. 9+44.87	0.00	1,602,616.7517	2,174,919.4556
P.O.T. 10+00.00 (1245+32.02 - US 67)	0.00	1,602,671.8531	2,174,921.1465
250TH STREET			
P.O.T. 10+00.00 (1247+45.44 - US 67)	0.00	1,602,681.0352	2,174,707.9289
P.O.T. 10+44.98	0.00	1,602,726.0172	2,174,708.4232
P.O.T. 12+02.34	0.00	1,602,883.3612	2,174,710.1523
F.A.S. 409 (IL 135)			
P.O.T. 778+00.00	0.00	1,602,932.5039	2,168,917.2294
F.A.S. 409 CURVE 'J':			
P.C. 782+53.89	0.00	1,602,915.9390	2,169,370.8130
P.O.T. 782+70.34 (10+00.00 - 240TH ST.)	0.00	1,602,915.2396	2,169,387.2468
P.I. 786+46.72	79.56'LT	1,602,901.6023	2,169,763.3832
P.O.T. 788+11.74 (10+00.00 - ENT)	0.00	1,602,734.5318	2,169,889.5347
P.T. 789+97.27	0.00	1,602,610.1770	2,170,026.7995
P.O.T. 792+83.96 (1293+44.75 - US 67)	0.00	1,602,397.4923	2,170,219.0430
240TH STREET			
P.O.T. 10+00.00 (782+70.34 - IL 135)	0.00	1,602,915.2396	2,169,387.2466
P.O.T. 10+54.93	0.00	1,602,970.1651	2,169,387.5102
P.O.T. 11+99.13	0.00	1,603,114.3683	2,169,388.2018
ENTRANCE OFF IL 135			
P.O.T. 10+00.00 (788+11.74 - IL 135)	0.00	1,602,734.5318	2,169,889.5347
ENT CURVE 'K':			
P.C. 10+87.93	0.00	1,602,663.8094	2,169,837.2793
P.I. 12+45.95	23.14'RT	1,602,536.7228	2,169,743.3775
P.T. 13+95.00	0.00	1,602,378.9454	2,169,734.7269
P.O.T. 17+20.80	0.00	1,602,053.6429	2,169,716.8911
285TH AVENUE			
P.O.T. 7+99.36	0.00	1,594,944.6618	2,169,217.9829
P.O.T. 9+46.82	0.00	1,594,940.2750	2,169,365.3786
P.O.T. 10+00.00 (865+03.14 - 285TH AVE.)	0.00	1,594,938.6929	2,169,418.5382
280TH AVENUE			
P.O.T. 10+00.00 (892+04.07 - US 67)	0.00	1,592,238.4686	2,169,356.7049
P.O.T. 10+72.48	0.00	1,592,236.8583	2,169,429.1667
P.O.T. 12+00.82	0.00	1,592,234.0069	2,169,557.4799
270TH AVENUE			
P.O.T. 7+96.67	0.00	1,586,853.3999	2,168,997.9313
P.O.T. 9+44.40	0.00	1,586,843.5296	2,169,145.3270
P.O.T. 10+00.00 (946+04.98 - US 67)	0.00	1,586,839.8148	2,169,200.8021
P.O.T. 12+00.95	0.00	1,586,837.1688	2,169,401.7339



- TEMPORARY BENCHMARKS:
- TBM #10: (SET BY OTHERS) N.E. CORNER OF CONC. SLAB AT LAKE WARREN GUARDHOUSE (NO MARK) ELEV. = 707.55
  - TBM #11: APEX DR R.O.W. MON WEST SIDE US HWY 67 AT STA 1026+00, ADJACENT TO N.E. FENCE COR.
  - TBM #12: CHIS. "a" ON W. HALF OF S. HEADWALL FOR CULV. UNDER 260TH AVE., E. SIDE OF U.S. 67.
  - TBM #13: CHIS. "a" ON S.E. COR. OF S. HEADWALL FOR CULV. UNDER AGG. P.E. FOR #2681, E. SIDE OF U.S. 67.
  - TBM #14: CHIS. "a" IN CENTER OF N. HEADWALL FOR CULV. UNDER F.E., 213' S. OF P.E. FOR #2729, E. SIDE OF U.S. 67.
  - TBM #14A: (USED AS NEW) BRASS CAP @ S.E. COR. BRIDGE OVER HENDERSON CREEK & HWY 67 "STAMPED "NAVD 1929" ELEV. = 626.09" IDOT.
  - TBM #15: CHIS. "a" ON TOP OF CONC. GUTTER @ STA. 894+00, E. SIDE OF U.S. 67, ACROSS P.E. FOR 2776.
  - TBM #16: CHIS. "+" ON TOP OF 12" CMP, N. SIDE OF CONC. P.E. TO #2872, W. SIDE OF US 67.
  - TBM #17A: (USED AS NEW) EXISTING BRASS CAP TOP WALL BRIDGE @ N.W. COR. BRIDGE #0940002 OVER MIDDLE HENDERSON CREEK & HWY 67 (NO ELEV. MARKED, ONLY STAMPING IS IDOT) STA 829+24.
  - TBM #17: DESCRIPTION CALLS OUT "CHIS. "+" ON TOP OF 24" CMP, S. SIDE OF F.E., 1 MILE S. OF ENTR. TO "HUNTER FARM", E. SIDE OF U.S. 67."
  - TBM #19: CHIS. "L" ON S. END OF 2'X2' BOX STA 787+85± RTE. 135 & US 67 Y.
  - TBM #20: CHISELED "a" ON N.W. COR. OF E. CONC. HEADWALL FOR CULV. UNDER F.E., S. SIDE OF U.S. 67, 0.7 MI. E. OF U.S. 67 & IL. 135 WYE.
  - TBM #21: E. COR. (HIGH POINT) OF LEANING R.O.W. MON. NEXT TO LONE WOOD F.P. S. SIDE OF U.S. 67, 1.2 MI. E. OF U.S. 67 & IL. 135 WYE.
  - TBM #21A: (USED AS NEW) BRASS DISK IN TOP WALL AT S.W. COR. NEW BRIDGE OVER TOMS CREEK STA 73+02± STR. NO. 094-0049 (NO NUMBER OR ELEV. MARKED ON DISK AT TIME OF LEVELS)
  - TBM #22: APEX OF R.O.W. MON., S.E. QUAD OF INTERSECTION OF IL 135 & 100TH ST., W. OF ALEXIS.

F.A.P. 310 CURVE 'A' PI STA. = 1272+07.11 Δ = 0° 10' 32" (RT) D = 0° 01' 03" R = 326,232.95' T = 500.00' L = 1,000.00' E = 0.38' S.E. = N/A P.C. STA. = 1267+07.11 P.T. STA. = 1277+07.11	F.A.P. 310 CURVE 'B' PI STA. = 1296+94.91 Δ = 89° 30' 12" (LT) D = 3° 26' 28" R = 1,665.00' T = 1,650.63' L = 2,600.94' E = 679.52' S.E. = 6.0% P.C. STA. = 1280+44.28 P.T. STA. = 1306+45.22	F.A.P. 310 CURVE 'C' PI STA. = 836+37.40 Δ = 1° 49' 55" (LT) D = 0° 11' 00" R = 31,273.20' T = 500.00' L = 999.91' E = 4.00' S.E. = N/A P.C. STA. = 831+37.40 P.T. STA. = 841+37.32	F.A.P. 310 CURVE 'D' PI STA. = 894+19.47 Δ = 0° 21' 54" (RT) D = 0° 02' 11" R = 156,930.41' T = 500.00' L = 1,000.00' E = 0.80' S.E. = N/A P.C. STA. = 889+19.47 P.T. STA. = 899+19.47	F.A.P. 409 CURVE 'J' PI STA. = 786+46.72 Δ = 45° 47' 54" (RT) D = 6° 09' 39" R = 930.00' T = 392.83' L = 743.38' E = 79.56' S.E. = 4.0% P.C. STA. = 782+53.89 P.T. STA. = 789+97.27	ENT CURVE 'K' PI STA. = 12+45.95 Δ = 33° 19' 18" (LT) D = 10° 51' 05" R = 528.00' T = 158.01' L = 307.07' E = 23.14' S.E. = N/A P.C. STA. = 10+87.93 P.T. STA. = 13+95.00
---	---	---	--	---	---

	USER NAME = hudelsonme	DESIGNED - JRD	REVISED -	<b>STATE OF ILLINOIS DEPARTMENT OF TRANSPORTATION</b>	<b>LOCATION #3 - ALIGNMENT, TIES, AND BENCHMARKS</b>	F.A.P. RTE.	SECTION	COUNTY	TOTAL SHEETS	SHEET NO.
	PLOT SCALE = 2000.00' / in.	CHECKED - SLD	REVISED -			VAR	D4 TREE REMOVAL 2021	VARIOUS	21	10
	PLOT DATE = 10/22/2020	DATE - 10/22/2020	REVISED -			CONTRACT NO. 68G07			ILLINOIS FED. AID PROJECT	

SCALE: N.T.S. SHEET 1 OF 1 SHEETS STA. 1210+00.00 TO STA. 1030+00.00

MODEL: D:\efk\...  
 FILE NAME: S:\CADD\PROJECTS\US67\US67\003\_0168636-8r-21E.dgn  
 Tree Removal\003\_0168636-8r-21E.dgn

LOCATION #3 TREE REMOVAL				
LOCATION				TREE REMOVAL, ACRES (SPECIAL)
				ACRE
<b>US 67 EAST-WEST</b>				
1243+10	TO	1243+87	LT	0.07
1252+23	TO	1252+57	LT	0.02
1270+38	TO	1270+72	RT	0.01
1271+72	TO	1272+84	RT	0.05
<b>IL 135</b>				
787+27	TO	787+57	LT	0.03
785+12	TO	785+70	RT	0.04
786+39	TO	787+32	RT	0.13
<b>ENTRANCE</b>				
10+20	TO	10+99	LT	0.03
13+49	TO	14+75	LT	0.12
11+67	TO	12+11	RT	0.04
<b>US 67 NORTH-SOUTH</b>				
810+71	TO	810+90	LT	0.01
812+49	TO	812+66	LT	0.01
833+17	TO	834+74	LT	0.01
835+68	TO	836+61	LT	0.04
859+77	TO	860+66	LT	0.04
879+16	TO	880+33	LT	0.06
882+97	TO	883+72	LT	0.06
883+95	TO	884+68	LT	0.06
885+65	TO	886+45	LT	0.08
886+74	TO	887+26	LT	0.04
888+00	TO	888+53	LT	0.02
889+15	TO	890+91	LT	0.20
926+23	TO	926+51	LT	0.02
927+22	TO	927+55	LT	0.02
943+31	TO	943+81	LT	0.03
946+13	TO	946+99	LT	0.04
947+70	TO	955+40	LT	0.30
807+16	TO	807+27	RT	0.01
808+72	TO	809+68	RT	0.03
810+42	TO	810+53	RT	0.01
877+84	TO	879+42	RT	0.03
889+23	TO	890+12	RT	0.02
910+64	TO	911+12	RT	0.02
947+10	TO	951+17	RT	0.32
<b>SUBTOTAL</b>				2.02
<b>ROUNDED TOTAL</b>				2

MODEL: D:\efk\IT\GEN\DRAWING\US67\US67.DWG  
 FILE NAME: US67.DWG  
 USER: JRD  
 DATE: 10/22/2020  
 PLOT DATE: 10/22/2020



USER NAME = hudelsonme	DESIGNED - JRD	REVISED -
	DRAWN - JRD	REVISED -
PLOT SCALE = 100.0000' / in.	CHECKED - XXX	REVISED -
PLOT DATE = 10/22/2020	DATE - 10/22/2020	REVISED -

**STATE OF ILLINOIS**  
**DEPARTMENT OF TRANSPORTATION**

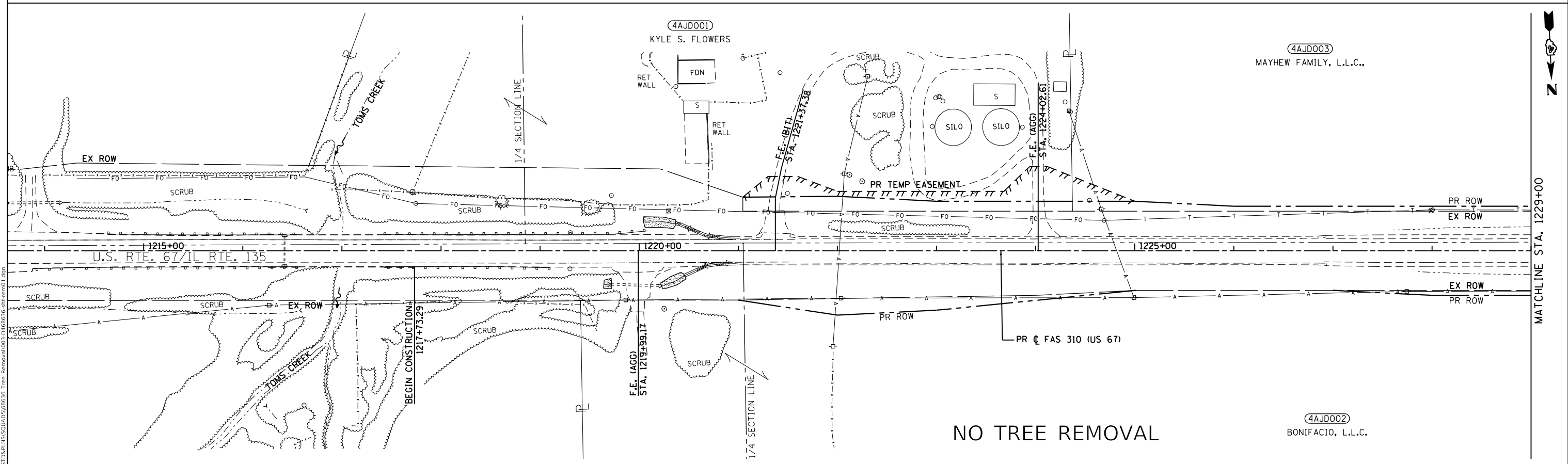
**LOCATION #3 - SCHEDULES**

SCALE: 1"=50'      SHEET      OF      SHEETS      STA.      TO      STA.

F.A.P. RTE.	SECTION	COUNTY	TOTAL SHEETS	SHEET NO.
VAR	D4 TREE REMOVAL 2021	VARIOUS	21	11
			CONTRACT NO. 68G07	
			ILLINOIS FED. AID PROJECT	

**LEGEND**

 TREE REMOVAL, ACRES



NO TREE REMOVAL

MODEL: D:\efk\IT\SCHEMATIC\4AJD003\US67\6636\_Tree Removal\4AJD003.DWG  
 FILE NAME: SCHEMATIC\4AJD003\US67\6636\_Tree Removal\4AJD003.dwg

**EFK Moen**  
Civil Engineering Design

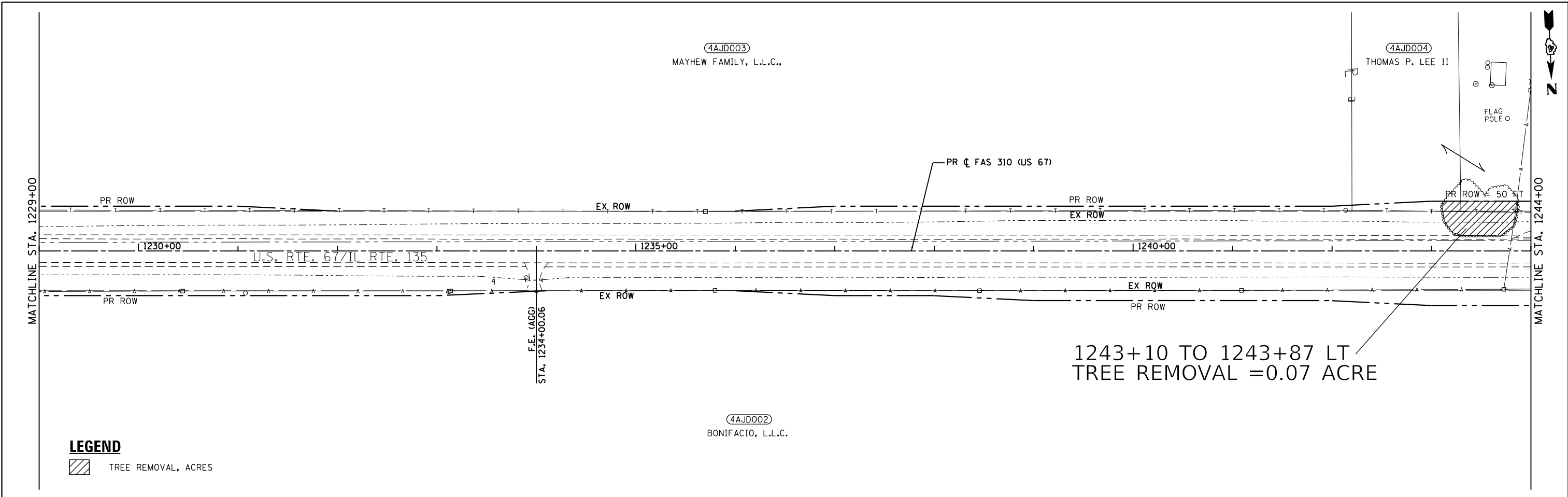
USER NAME = hudelsonme	DESIGNED - JRD	REVISED -
PLOT SCALE = 100,0000' / in.	DRAWN - JRD	REVISED -
PLOT DATE = 10/22/2020	CHECKED - XXX	REVISED -
	DATE - 10/22/2020	REVISED -

**STATE OF ILLINOIS  
DEPARTMENT OF TRANSPORTATION**

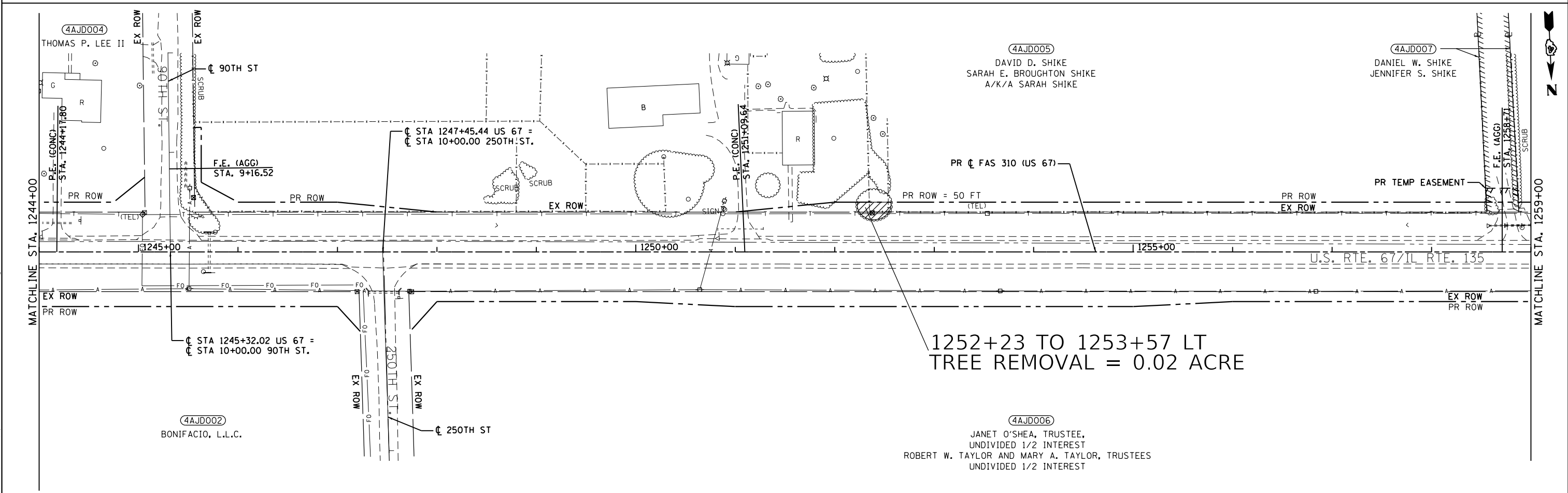
**LOCATION #3 - TREE REMOVAL**

SCALE: 1"=50' SHEET 1 OF 10 SHEETS STA. 1214+00 TO STA. 1229+00

F.A.P. RTE.	SECTION	COUNTY	TOTAL SHEETS	SHEET NO.
VAR	D4 TREE REMOVAL 2021	VARIOUS	21	12
CONTRACT NO. 68G07				
ILLINOIS		FED. AID PROJECT		



**LEGEND**  
 TREE REMOVAL, ACRES



MODEL: D:\efk\11...  
 FILE NAME: S:\CADD\RAFT\13\DRP\US67\US67\_6636\_Tree Removal\1004\1468636-ctb-rem02.dgn

**EFK Moen**  
 Civil Engineering Design

USER NAME = hudelsonme	DESIGNED - JRD	REVISED -
PLOT SCALE = 100,0000' / in.	DRAWN - JRD	REVISED -
PLOT DATE = 10/22/2020	CHECKED - XXX	REVISED -
	DATE - 10/22/2020	REVISED -

**STATE OF ILLINOIS**  
**DEPARTMENT OF TRANSPORTATION**

**LOCATION #3 - TREE REMOVAL**  
 SCALE: 1"=50' SHEET 2 OF 10 SHEETS STA. 1229+00 TO STA. 1259+00

F.A.P. RTE.	SECTION	COUNTY	TOTAL SHEETS	SHEET NO.
VAR	D4 TREE REMOVAL 2021	VAR	21	13
CONTRACT NO. 68G07				
ILLINOIS FED. AID PROJECT				

F.A.P. 310 CURVE 'A'  
 PI STA. = 1272+07.11  
 $\Delta = 0^\circ 10' 32''$  (RT)  
 D = 0' 01' 03"  
 R = 326,232.95'  
 T = 500.00'  
 L = 1,000.00'  
 E = 0.38'  
 S.E. = N/A  
 P.C. STA. = 1267+07.11  
 P.T. STA. = 1277+07.11

4AJD008  
 DARYL D. SHIKE, TRUSTEE

4AJD008  
 DARYL D. SHIKE, TRUSTEE

1271+72 TO 1272+84 RT  
 TREE REMOVAL = 0.05 ACRE

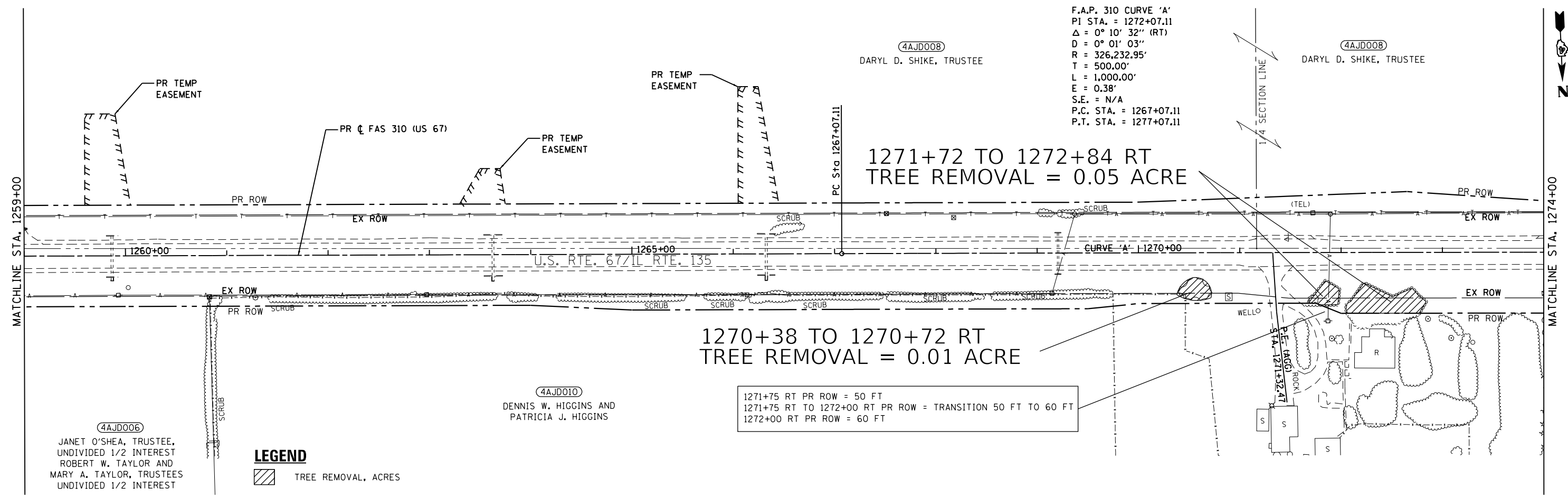
1270+38 TO 1270+72 RT  
 TREE REMOVAL = 0.01 ACRE

1271+75 RT PR ROW = 50 FT  
 1271+75 RT TO 1272+00 RT PR ROW = TRANSITION 50 FT TO 60 FT  
 1272+00 RT PR ROW = 60 FT

4AJD010  
 DENNIS W. HIGGINS AND  
 PATRICIA J. HIGGINS

4AJD006  
 JANET O'SHEA, TRUSTEE,  
 UNDIVIDED 1/2 INTEREST  
 ROBERT W. TAYLOR AND  
 MARY A. TAYLOR, TRUSTEES  
 UNDIVIDED 1/2 INTEREST

**LEGEND**  
 TREE REMOVAL, ACRES



F.A.P. 310 CURVE 'B'  
 PI STA. = 1296+94.91  
 $\Delta = 89^\circ 30' 12''$  (LT)  
 D = 3' 26' 28"  
 R = 1,665.00'  
 T = 1,650.63'  
 L = 2,600.94'  
 E = 679.52'  
 S.E. = 6.0%  
 P.C. STA. = 1280+44.28  
 P.T. STA. = 1306+45.22

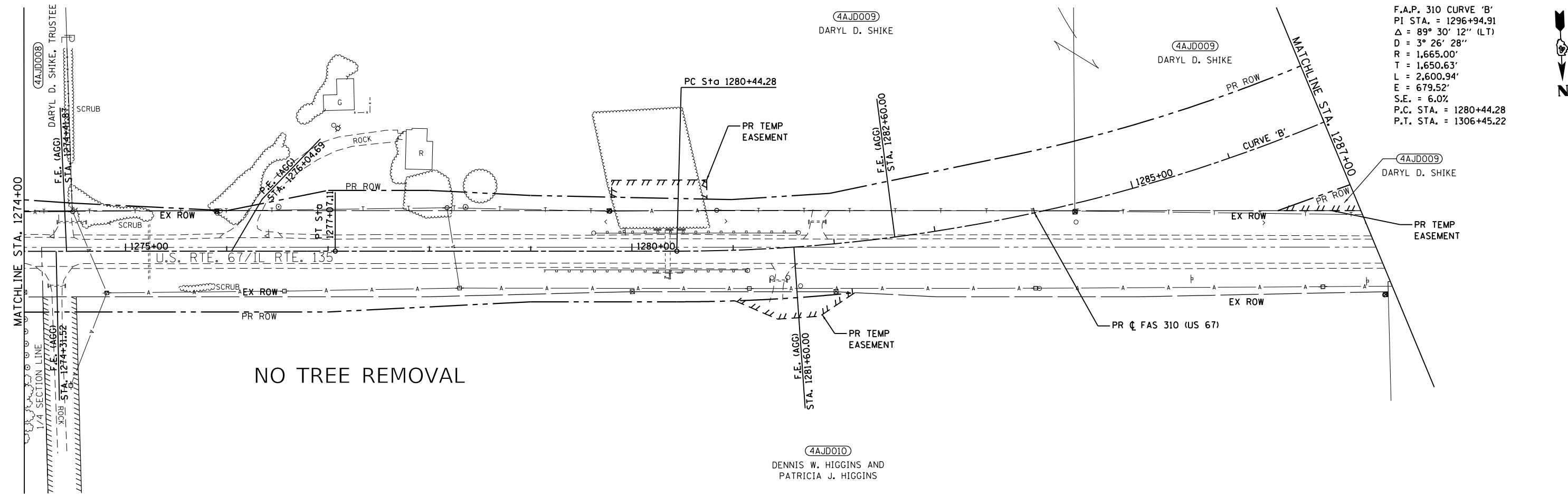
4AJD009  
 DARYL D. SHIKE

4AJD009  
 DARYL D. SHIKE

4AJD009  
 DARYL D. SHIKE

NO TREE REMOVAL

4AJD010  
 DENNIS W. HIGGINS AND  
 PATRICIA J. HIGGINS



MODEL: D:\46411...  
 FILE NAME: S:\CADD\DRAWING\PROJECTS\US50\405\68636\_Tree Removal\1005-D468636-ctc-rem03.dgn

**EFK Moen**  
 Civil Engineering Design

USER NAME = hudelsonme	DESIGNED - JRD	REVISED -
PLOT SCALE = 100,0000' / in.	DRAWN - JRD	REVISED -
PLOT DATE = 10/22/2020	CHECKED - XXX	REVISED -
	DATE - 10/22/2020	REVISED -

**STATE OF ILLINOIS  
 DEPARTMENT OF TRANSPORTATION**

**LOCATION #3 - TREE REMOVAL**  
 SCALE: 1"=50'    SHEET 3 OF 10 SHEETS    STA. 1259+00 TO STA. 1287+00

F.A.P. RTE.	SECTION	COUNTY	TOTAL SHEETS	SHEET NO.
VAR	D4 TREE REMOVAL 2021	VARIOUS	21	14
CONTRACT NO. 68G07				
ILLINOIS FED. AID PROJECT				





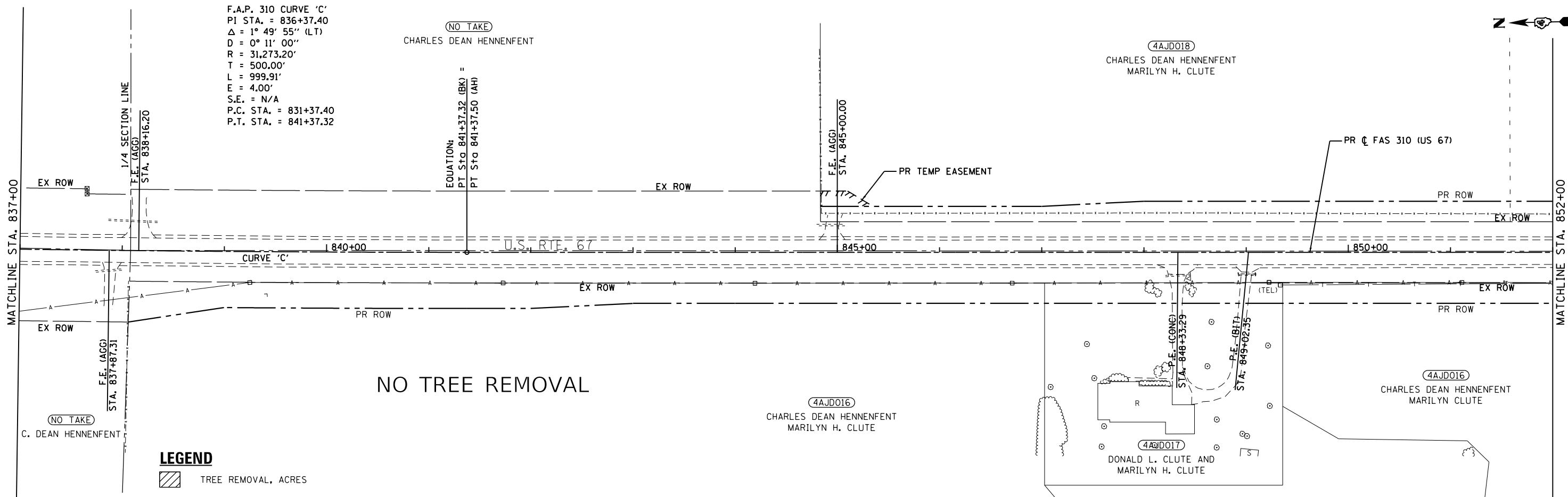


F.A.P. 310 CURVE 'C'  
 PI STA. = 836+37.40  
 $\Delta = 1^\circ 49' 55''$  (LT)  
 $D = 0^\circ 11' 00''$   
 $R = 31,273.20'$   
 $T = 500.00'$   
 $L = 999.91'$   
 $E = 4.00'$   
 $S.E. = N/A$   
 P.C. STA. = 831+37.40  
 P.T. STA. = 841+37.32

(NO TAKE)  
 CHARLES DEAN HENNENFENT

EQUATION:  
 PT Sta 841+37.32 (BK) =  
 PT Sta 841+37.50 (AH)

4AJD018  
 CHARLES DEAN HENNENFENT  
 MARILYN H. CLUTE

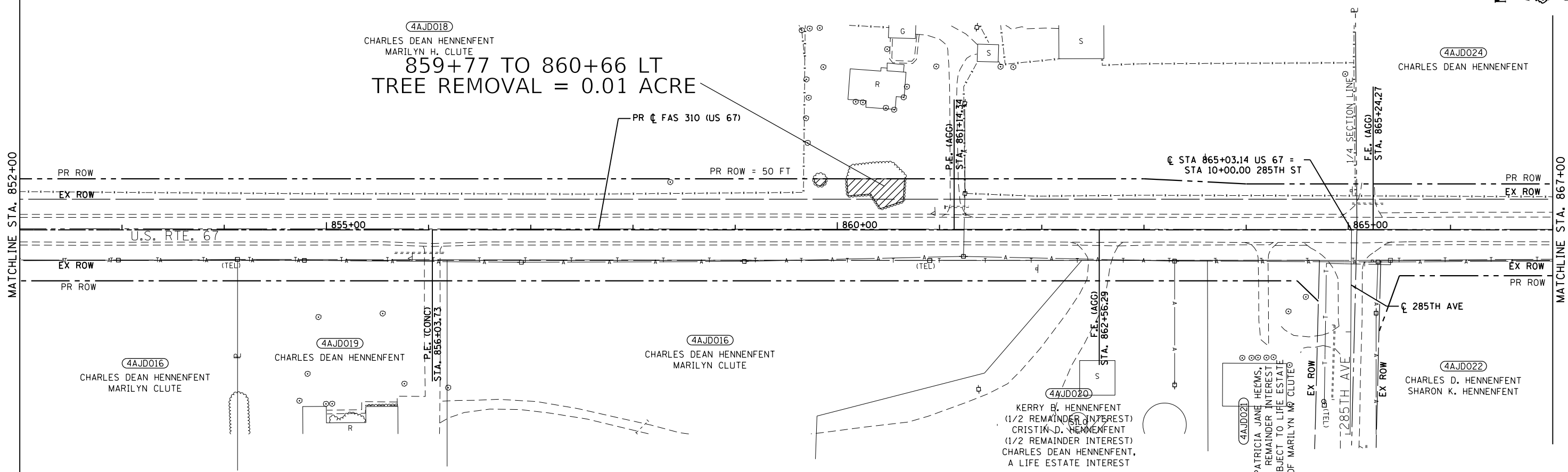


NO TREE REMOVAL

**LEGEND**

TREE REMOVAL, ACRES

4AJD018  
 CHARLES DEAN HENNENFENT  
 MARILYN H. CLUTE  
 859+77 TO 860+66 LT  
 TREE REMOVAL = 0.01 ACRE



STATE OF ILLINOIS  
 DEPARTMENT OF TRANSPORTATION

LOCATION #3 - TREE REMOVAL

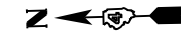
SCALE: 1"=50' SHEET 6 OF 10 SHEETS STA. 837+00 TO STA. 867+00

F.A.P. RTE.	SECTION	COUNTY	TOTAL SHEETS	SHEET NO.
VAR	D4 TREE REMOVAL 2021	VARIOUS	21	17
			CONTRACT NO. 68G07	
ILLINOIS FED. AID PROJECT				

MODEL: D:\m4\1  
 FILE NAME: S:\CEN\DRIFT\STDRP\US50\405\866536\_Tree Removal\1005-D468636-shc-rem06.dgn

**EFK Moen**  
 Civil Engineering Design

USER NAME = hudelsonme	DESIGNED - JRD	REVISED -
PLOT SCALE = 100,0000' / in.	DRAWN - JRD	REVISED -
PLOT DATE = 10/22/2020	CHECKED - XXX	REVISED -
	DATE - 10/22/2020	REVISED -



4AJD024  
CHARLES DEAN HENNENFENT

879+16 TO 880+33 LT  
TREE REMOVAL = 0.06 ACRE

877+84 TO 879+42 RT  
TREE REMOVAL = 0.03 ACRE

4AJD022  
CHARLES D. HENNENFENT  
SHARON K. HENNENFENT

4AJD023  
CHRISTOPHER WETZEL  
DENISE WETZEL

4AJD022  
CHARLES D. HENNENFENT  
SHARON K. HENNENFENT

**LEGEND**  
[Hatched Box] TREE REMOVAL, ACRES

F.A.P. 310 CURVE 'D'  
PI STA. = 894+19.47  
 $\Delta = 0^\circ 21' 54''$  (RT)  
D = 0' 02' 11"  
R = 156,930.41'  
T = 500.00'  
L = 1,000.00'  
E = 0.80'  
S.E. = N/A  
P.C. STA. = 889+19.47  
P.T. STA. = 899+19.47



886+74 TO 887+26 LT  
TREE REMOVAL = 0.04 ACRE

889+15 TO 890+91 LT  
TREE REMOVAL = 0.20 ACRE

4AJD024  
CHARLES DEAN HENNENFENT

885+65 TO 886+45 LT  
TREE REMOVAL = 0.08 ACRE

888+00 TO 888+53 LT  
TREE REMOVAL = 0.02 ACRE

4AJD024  
CHARLES DEAN HENNENFENT

883+95 TO 884+68 LT  
TREE REMOVAL = 0.06 ACRE

882+97 TO 883+72 LT  
TREE REMOVAL = 0.06 ACRE

4AJD022  
CHARLES D. HENNENFENT  
SHARON K. HENNENFENT

889+23 TO 890+12 RT  
TREE REMOVAL = 0.02 ACRE

4AJD025  
JOSEPH A. YOUNG  
DARCY M. YOUNG

MODEL: D:\m\h\...  
FILE NAME: S:\CEN\DR\A\T\TSD\PR\US\50\405\66536\_Tree Removal\1009-D\168636-btc-rem07.dgn

**EFK Moen**  
Civil Engineering Design

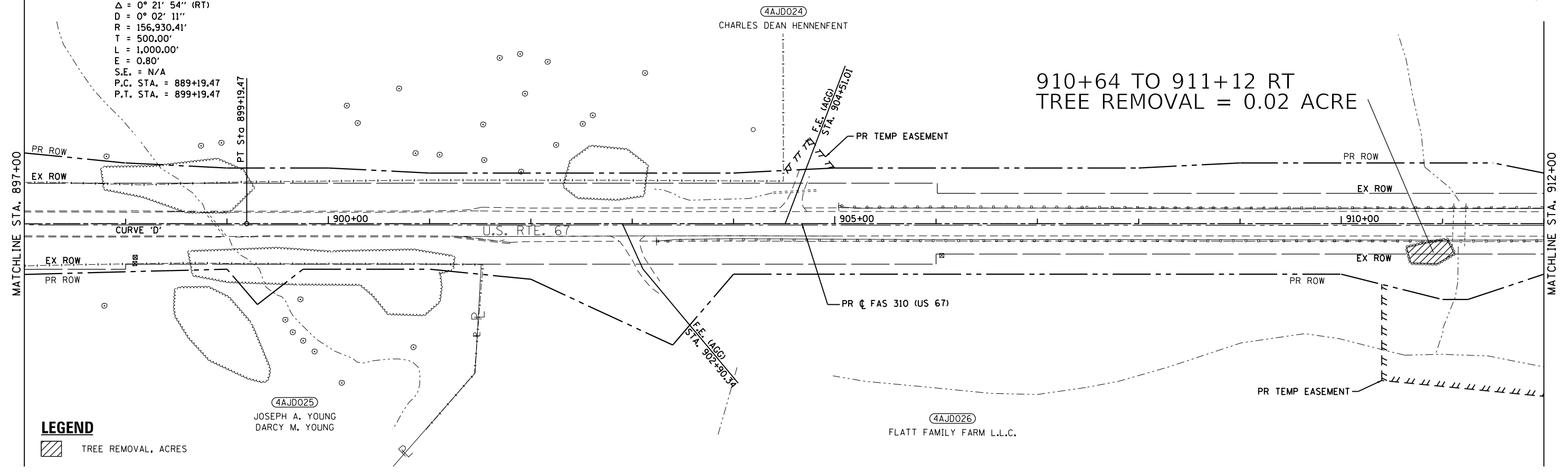
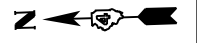
USER NAME = hudelsonme	DESIGNED - JRD	REVISED -
PLOT SCALE = 100,0000' / in.	DRAWN - JRD	REVISED -
PLOT DATE = 10/22/2020	CHECKED - XXX	REVISED -
	DATE - 10/22/2020	REVISED -

STATE OF ILLINOIS  
DEPARTMENT OF TRANSPORTATION

LOCATION #3 - TREE REMOVAL  
SCALE: 1"=50'  
SHEET 7 OF 10 SHEETS  
STA. 867+00 TO STA. 897+00

F.A.P. RTE.	SECTION	COUNTY	TOTAL SHEETS	SHEET NO.
VAR	D4 TREE REMOVAL 2021	VARIOUS	21	18
CONTRACT NO. 68G07				
ILLINOIS FED. AID PROJECT				

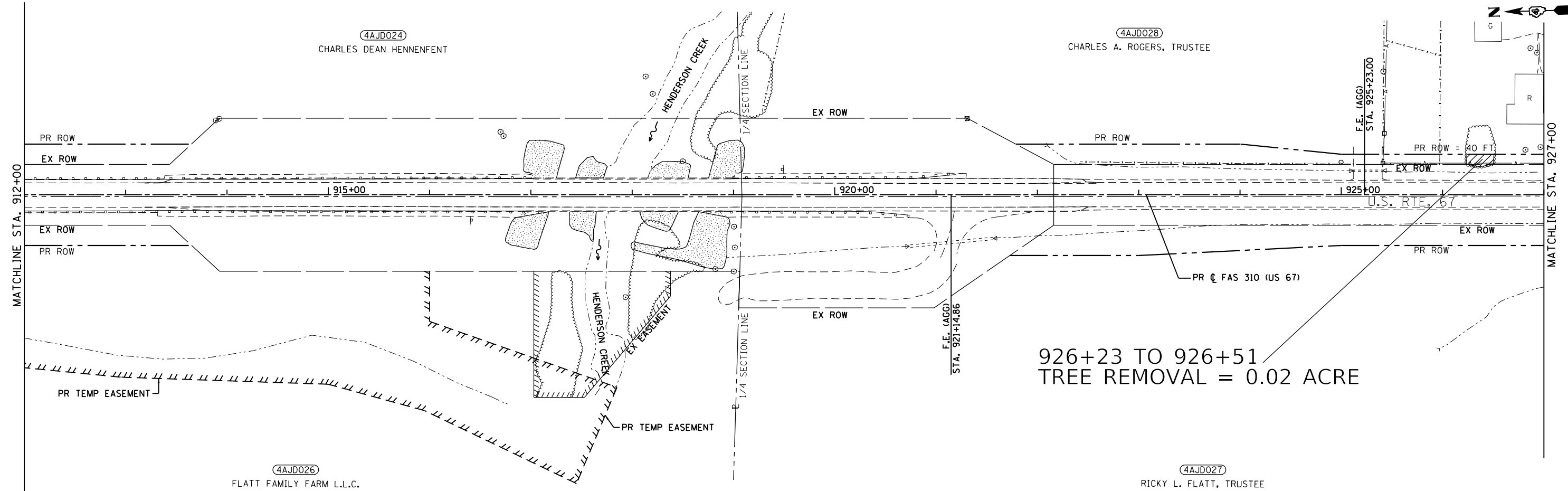
F.A.P. 310 CURVE 'D'  
 PI STA. = 894+19.47  
 $\Delta = 0^\circ 21' 54''$  (RT)  
 $D = 0^\circ 02' 11''$   
 $R = 156,930.41'$   
 $T = 500.00'$   
 $L = 1,000.00'$   
 $E = 0.80'$   
 $S.E. = N/A$   
 $P.C. STA. = 889+19.47$   
 $P.T. STA. = 899+19.47$



910+64 TO 911+12 RT  
 TREE REMOVAL = 0.02 ACRE

**LEGEND**

TREE REMOVAL, ACRES



926+23 TO 926+51  
 TREE REMOVAL = 0.02 ACRE

MODEL: D:\46411...  
 FILE NAME: S:\CADD\DRAWING\US67\US67\_036 Tree Removal\1010101468636-ctc-rem03.dgn

**EFK Moen**  
 Civil Engineering Design

USER NAME = hudelsonme	DESIGNED - JRD	REVISED -
	DRAWN - JRD	REVISED -
PLOT SCALE = 100,0000' / in.	CHECKED - XXX	REVISED -
PLOT DATE = 10/22/2020	DATE - 10/22/2020	REVISED -

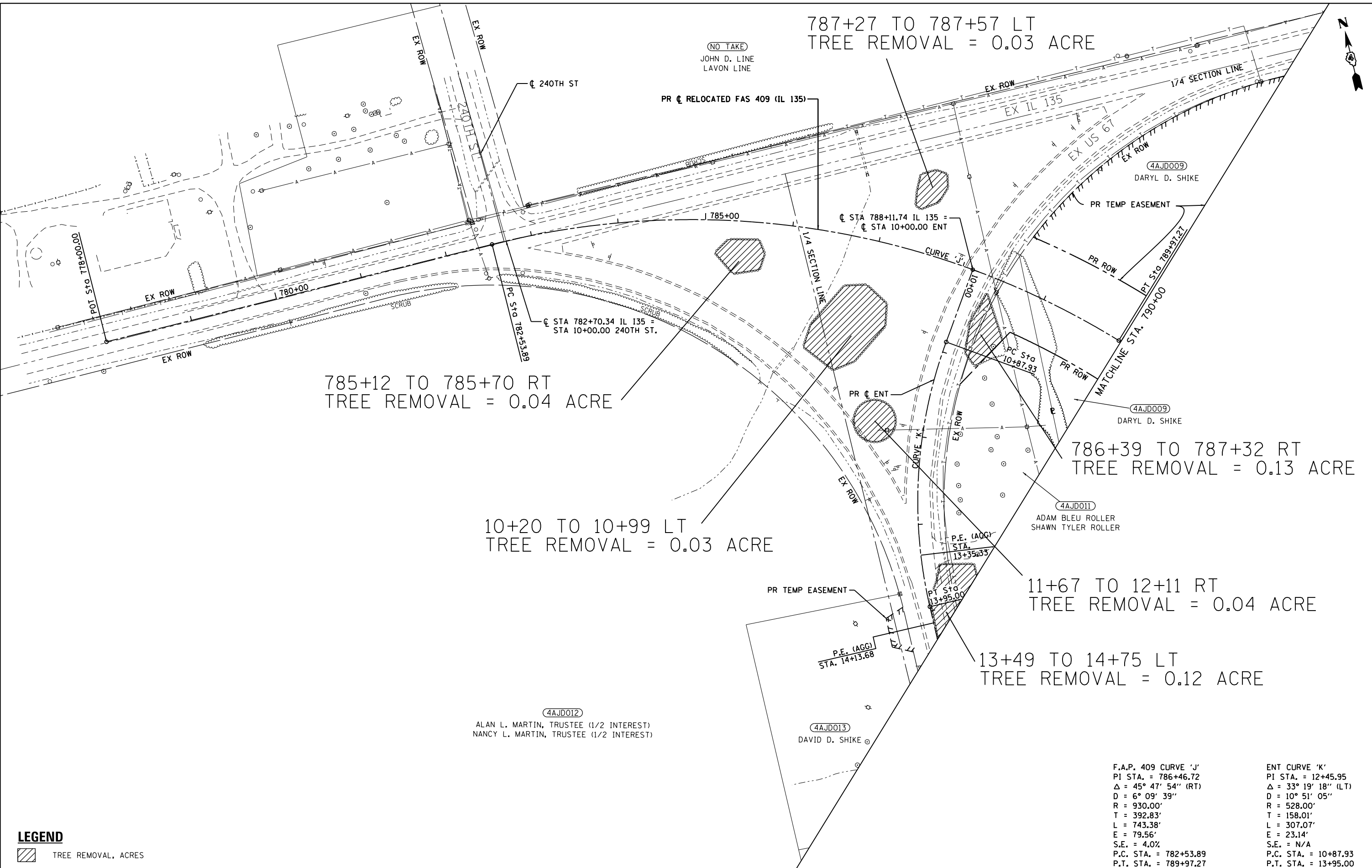
**STATE OF ILLINOIS  
 DEPARTMENT OF TRANSPORTATION**

**LOCATION #3 - TREE REMOVAL**

SCALE: 1"=50' SHEET 8 OF 10 SHEETS STA. 897+00 TO STA. 927+00

F.A.P. RTE.	SECTION	COUNTY	TOTAL SHEETS	SHEET NO.
VAR	D4 TREE REMOVAL 2021	VARIOUS	21	19
CONTRACT NO. 68G07				
ILLINOIS FED. AID PROJECT				





787+27 TO 787+57 LT  
TREE REMOVAL = 0.03 ACRE

785+12 TO 785+70 RT  
TREE REMOVAL = 0.04 ACRE

10+20 TO 10+99 LT  
TREE REMOVAL = 0.03 ACRE

786+39 TO 787+32 RT  
TREE REMOVAL = 0.13 ACRE

11+67 TO 12+11 RT  
TREE REMOVAL = 0.04 ACRE

13+49 TO 14+75 LT  
TREE REMOVAL = 0.12 ACRE

F.A.P. RTE. = 409	SECTION = 'J'	COUNTY = CO. JEFFERSON	TOTAL SHEETS = 21	SHEET NO. = 10
PI STA. = 786+46.72	ENT CURVE 'K'	VARIOUS	21	21
$\Delta = 45^\circ 47' 54''$ (RT)	PI STA. = 12+45.95	CONTRACT NO. 68G07		
D = 6° 09' 39"	$\Delta = 33^\circ 19' 18''$ (LT)	ILLINOIS FED. AID PROJECT		
R = 930.00'	D = 10° 51' 05"			
T = 392.83'	R = 528.00'			
L = 743.38'	T = 158.01'			
E = 79.56'	L = 307.07'			
S.E. = 4.0%	E = 23.14'			
P.C. STA. = 782+53.89	S.E. = N/A			
P.T. STA. = 789+97.27	P.C. STA. = 10+87.93			
	P.T. STA. = 13+95.00			

**LEGEND**  
 TREE REMOVAL, ACRES

MODEL: D:\efk\11\GEN\DRAWING\GEN\USQUAD\05\066536\_Tree Removal\1013\_0468636-dtc-rem10.dwg  
 FILE NAME: S:\GEN\DRAWING\GEN\USQUAD\05\066536\_Tree Removal\1013\_0468636-dtc-rem10.dwg

**EFK Moen**  
Civil Engineering Design

USER NAME = hudelsonme	DESIGNED - JRD	REVISED -
PLOT SCALE = 100,0000' / in.	DRAWN - JRD	REVISED -
PLOT DATE = 10/22/2020	CHECKED - XXX	REVISED -
	DATE - 10/22/2020	REVISED -

**STATE OF ILLINOIS**  
**DEPARTMENT OF TRANSPORTATION**

**LOCATION #3 - TREE REMOVAL**  
 SCALE: 1"=50'    SHEET 10 OF 10 SHEETS    STA. 778+00 TO STA. 790+00