

INDEX OF SHEETS

1	COVER
2	INDEX OF SHEETS, HIGHWAY STANDARDS, AND GENERAL NOTES
3-9	SUMMARY OF QUANTITIES
10-12	SCHEDULE OF QUANTITIES
13	ALIGNMENT, TIES, & BENCHMARKS
14	SOUTHBOUND FAI-55 ROADWAY PLAN
15	NORHTBOUND FAI-55 ROADWAY PLAN
16	MEDIAN CROSSOVER REMOVAL
17	SOUTH MEDIAN CROSSOVER
18	NORTH MEDIAN CROSSOVER
19-20	SOUTHBOUND FAI-55 TRAFFIC CONTROL
21-22	NORTHBOUND FAI-55 TRAFFIC CONTROL
23	TRAFFIC CONTROL-TYPICAL SECTIONS
24	COUNTY HIGHWAY 36 DETOUR ROUTE
25-29	WIDTH RESTRICTION SIGN LOCATION DETAIL
30	MEDIAN GUARD POST DETAIL
31	DETAIL FOR TEMPORARY RUMBLE STRIPS (SPECIAL)
32	DISTRICT 5 DETAIL NO. 70103710 TRAFFIC CONTROL FOR RAMP
33	DISTRICT 5 DETAIL NO. 70200000 TRAFFIC CONTROL & PROTECTION DEVICES (ROAD & SIDEROAD/STREET CLOSURES)
34	DISTRICT 5 DETAIL NO. 7800BBBB PAVEMENT MARKING (INTERSTATE & MULTI-LANE APPLICATIONS)
35	DISTRICT 5 DETAIL NO. X7200201 WIDTH RESTRICTION SIGNING
36-59	STRUCTURE PLANS
60-67	MEDIAN CROSSOVER CROSS SECTIONS

HIGHWAY STANDARDS

000001-07	STANDARD SYMBOLS, ABBREVIATIONS AND PATTERNS
001001-02	AREAS OF REINFORCEMENT BARS
001006	DECIMAL OF AN INCH AND OF A FOOT
280001-07	TEMPORARY EROSION CONTROL SYSTEMS
420001-09	PAVEMENT JOINTS
442201-03	CLASS C AND D PATCHES
482001-02	HMA SHOULDER ADJACENT TO FLEXIBLE PAVEMENT
483001-05	PCC SHOULDER
542001-06	CONCRETE END SECTIONS FOR PIPE CULVERTS 15" (375 MM) THRU 84" (2100 MM) DIAMETER
542526-03	INLET BOX TYPE 24 (600) F
602401-06	PRECAST MANHOLE, TYPE A, 4' (1.22 M) DIAMETER
602411-09	PRECAST MANHOLE, TYPE A, 7' (2.13 M) DIAMETER
602601-06	PRECAST REINFORCED CONCRETE FLAT SLAB TOP
602701-02	MANHOLE STEPS
604001-05	FRAME AND LIDS, TYPE 1
604036-03	GRATE TYPE 8
610001-08	SHOULDER INLET WITH CURB
630001-12	STEEL PLATE BEAM GUARDRAIL
630301-09	SHOULDER WIDENING FOR TYPE 1 (SPECIAL) GUARDRAIL TERMINALS
631031-16	TRAFFIC BARRIER TERMINAL, TYPE 6
642001-02	SHOULDER RUMBLE STRIPS, 16 INCH
701001-02	OFF-RD OPERATIONS, 2L, 2W, MORE THAN 15' (4.5 m) AWAY
701006-05	OFF-RD OPERATIONS, 2L, 2W, 15' (4.5 m) TO 24" (600 mm) FROM PAVEMENT EDGE
701101-05	OFF-RD OPERATIONS, MULTILANE, 15' (4.5 m) TO 24" (600 mm) FROM PAVEMENT EDGE
701106-02	OFF-RD OPERATIONS, MULTILANE, MORE THAN 15' (4.5 m) AWAY
701201-05	LANE CLOSURE, 2L, 2W, DAY ONLY, FOR SPEEDS ≥ 45 MPH
701400-09	APPROACH TO LANE CLOSURE, FREEWAY/EXPRESSWAY
701401-12	LANE CLOSURE, FREEWAY/EXPRESSWAY
701406-12	LANE CLOSURE, FREEWAY/EXPRESSWAY, DAY OPERATIONS ONLY
701411-09	LANE CLOSURE, MULTILANE, AT ENTRANCE OR EXIT RAMP, FOR SPEEDS ≥ 45 MPH
701416-11	LANE CLOSURE, FREEWAY/EXPRESSWAY, WITH CROSSOVER AND BARRIER
701428-01	TRAFFIC CONTROL SETUP AND REMOVAL FREEWAY/EXPRESSWAY
701451-05	RAMP CLOSURE FREEWAY/EXPRESSWAY
701456-05	PARTIAL EXIT RAMP CLOSURE FREEWAY/EXPRESSWAY
701901-08	TRAFFIC CONTROL DEVICES
704001-08	TEMPORARY CONCRETE BARRIER
725001-01	OBJECT AND TERMINAL MARKERS

GENERAL NOTES

G.N.-105.09A
ALL ELEVATIONS SHOWN IN THE PLANS ARE BASED ON NORTH AMERICAN VERTICAL DATUM OF 1988. (NAVD 88)

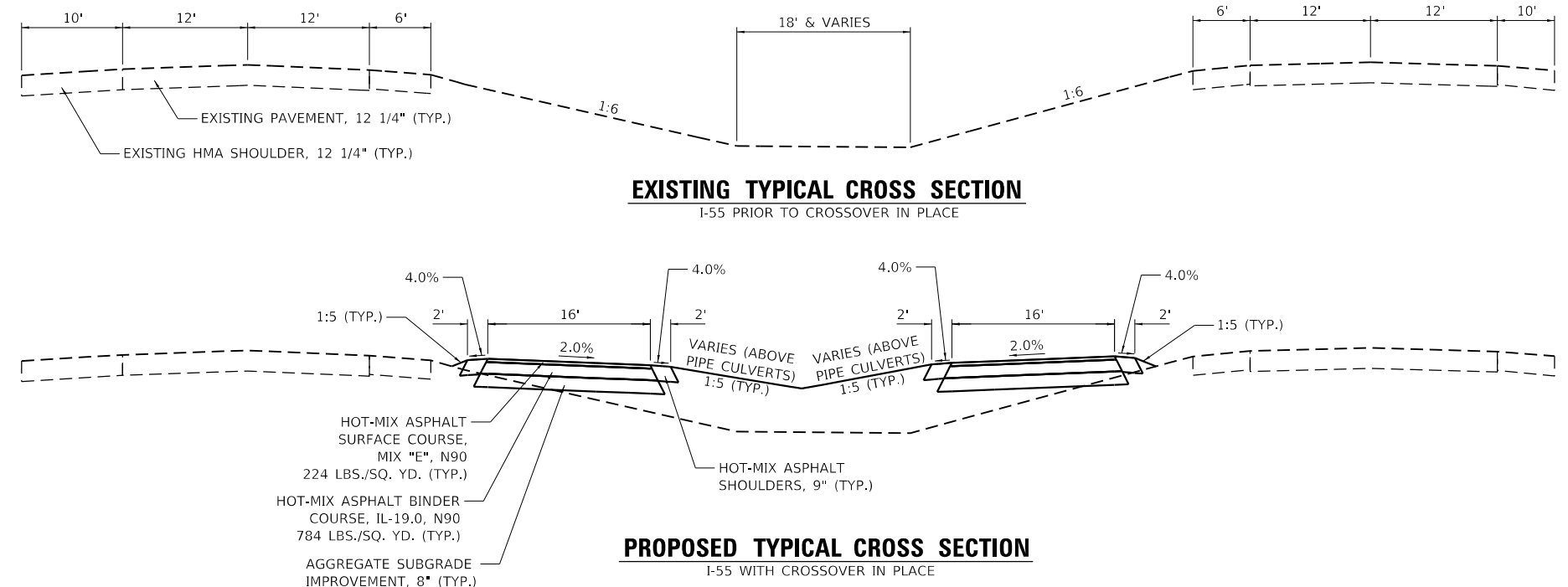
G.N. -406H
MIXTURE REQUIREMENTS
THE FOLLOWING MIXTURE REQUIREMENTS ARE APPLICABLE FOR THIS PROJECT:

Location	Median Crossover	Median Crossover	Median Crossover	Near Approach Pavement	FAI55
Mixture Use	2.0" Surface Course	7" Binder for Crossover / Bottom 7" of Shoulder	Top 2" of Shoulder	Class D Patches	Staged Shoulder
AC/PG	PG 64-22	PG 64-22	PG 64-22	PG 64-22	PG 64-22
Design Air Voids	4.0% @ Ndes=90	4.0% @ Ndes=90	4.0% @ Ndes=50	4.0% @ Ndes=90	4.0% @ Ndes=50
Mix Comp (Gradation)	IL 9.5	IL 19.0	IL 9.5	IL 19.0	IL 9.5
Friction Aggregate	Mix E	N.A.	Mix C	N.A.	Mix C
Mixture Weight	112	112	112	112	112
Quality Management Program	QC/QA	QC/QA	QC/QA	QC/QA	QC/QA
Sublot Size	N.A.	N.A.	N.A.	N.A.	N.A.

G.N.-440B
THE EXISTING TIE BARS BETWEEN THE EXISTING PAVEMENT AND EXISTING MEDIANS, GUTTERS AND/OR COMBINATION CURB AND GUTTERS THAT ARE FOUND SUITABLE FOR REUSE SHALL BE CLEANED, STRAIGHTENED AND INCORPORATED INTO THE NEW CONSTRUCTION. ANY EXISTING TIE BARS THAT ARE FOUND UNSUITABLE TO BE INCORPORATED INTO THE PROPOSED CONSTRUCTION DUE TO EXCESSIVE RUSTING OR DISTRESS SHALL BE REMOVED FLUSH WITH THE FACE OF THE EXISTING CONCRETE AND DISPOSED OF OUTSIDE THE LIMITS OF THE RIGHT-OF-WAY IN ACCORDANCE WITH ARTICLE 202.03 OF THE STANDARD SPECIFICATIONS.

THIS WORK WILL NOT BE PAID FOR SEPARATELY BUT SHALL BE CONSIDERED INCLUDED IN THE VARIOUS REMOVAL PAY ITEMS AND NO ADDITIONAL COMPENSATION WILL BE ALLOWED.

G.N.- 781
THE FINAL PAVEMENT MARKINGS SHALL BE IN PLACE PRIOR TO PLACING THE RAISED REFLECTIVE PAVEMENT MARKERS.



COMMITMENTS

NONE.

MODEL: D:\p4\11\CADD\CADD_Sheets\0570016-shc-General_Notes.dgn
FILE NAME: 202371018237100110014.01 (189-024 DS Work Order 11\CADD\CADD_Sheets\0570016-shc-General_Notes.dgn)

	USER NAME = jdspller	DESIGNED - JDS	REVISED - 12/16/2020
	PLOT SCALE = 2.0000' / in.	DRAWN - WLL	REVISED -
	PLOT DATE = 12/16/2020	CHECKED - JDS	REVISED -
		DATE -	REVISED -

STATE OF ILLINOIS
DEPARTMENT OF TRANSPORTATION

FUNKS GROVE STRUCTURE REHABILITATION
INDEX OF SHEETS, HIGHWAY STANDARDS, AND GENERAL NOTES

F.A.I. RTE.	SECTION	COUNTY	TOTAL SHEETS	SHEET NO.
55	(57-9HB)BR	MCLEAN	67	2
CONTRACT NO. 70D16				
ILLINOIS FED. AID PROJECT				

SCALE: SHEET 1 OF 1 SHEETS STA. TO STA.

LOCATION:	FAI 55 INTERSTATE RURAL BRIDGE STA. 253+80.00 TO STA. 334+00.00
COUNTY:	MCLEAN
FUNDING BREAKOUT:	90% FED/10% ST
CONSTRUCTION CODE:	0059

CODE NO.	ITEM	UNIT	TOTAL QUANTITY	QUANTITY
20100500	TREE REMOVAL, ACRES	ACRE	0.25	0.25
20200100	EARTH EXCAVATION	CU YD	735	735
20400800	FURNISHED EXCAVATION	CU YD	2335	2335
20800150	TRENCH BACKFILL	CU YD	100	100
25000210	SEEDING, CLASS 2A	ACRE	1.25	1.25
25000400	NITROGEN FERTILIZER NUTRIENT	POUND	95	95
25000500	PHOSPHORUS FERTILIZER NUTRIENT	POUND	95	95
25000600	POTASSIUM FERTILIZER NUTRIENT	POUND	95	95
25100115	MULCH, METHOD 2	ACRE	1.25	1.25
28000500	INLET AND PIPE PROTECTION	EACH	9	9
28000510	INLET FILTERS	EACH	15	15
28100107	STONE RIPRAP, CLASS A4	SQ YD	56	56
28100801	STONE DUMPED RIPRAP, CLASS A1	TON	38	38



* SPECIALTY ITEMS

MODEL: 05/6/21
FILE NAME: S:\2020\70D16\70D16.dwg
USER: JLS
DATE: 10/15/2020



USER NAME = willewis	DESIGNED - JDS	REVISED -
	DRAWN - WLL	REVISED -
PLOT SCALE = 100.0000' / in.	CHECKED - JDS	REVISED -
PLOT DATE = 10/15/2020	DATE -	REVISED -

**STATE OF ILLINOIS
DEPARTMENT OF TRANSPORTATION**

**FUNKS GROVE STRUCTURE REHABILITATION
SUMMARY OF QUANTITIES**

F.A.I. RTE.	SECTION	COUNTY	TOTAL SHEETS	SHEET NO.
55	(57-9HB)BR	MCLEAN	67	3
CONTRACT NO. 70D16				
SCALE:		SHEET 1	OF 7 SHEETS	STA. T O STA.

LOCATION:	FAI 55 INTERSTATE RURAL BRIDGE STA. 253+80.00 TO STA. 334+00.00
COUNTY:	MCLEAN
FUNDING BREAKOUT:	90% FED/10% ST
CONSTRUCTION CODE:	0059

CODE NO.	ITEM	UNIT	TOTAL QUANTITY	QUANTITY
48203033	HOT-MIX ASPHALT SHOULDERS, 9"	SQ YD	1098	1098
48300605	PORTLAND CEMENT CONCRETE SHOULDERS 11 1/4"	SQ YD	143	143
50102400	CONCRETE REMOVAL	CU YD	158.5	158.5
50300225	CONCRETE STRUCTURES	CU YD	62.4	62.4
50300255	CONCRETE SUPERSTRUCTURE	CU YD	101.5	101.5
50300300	PROTECTIVE COAT	SQ YD	326	326
50800205	REINFORCEMENT BARS, EPOXY COATED	POUND	28200	28200
52000110	PREFORMED JOINT STRIP SEAL	FOOT	186	186
54213453	END SECTIONS 10"	EACH	6	6
54246205	INLET NOX, STANDARD 542526	EACH	6	6
54262712	METAL FLARED END SECTIONS 12"	EACH	6	6
542A0213	PIPE CULVERTS, CLASS A, TYPE 1 8"	FOOT	86	86
542A0223	PIPE CULVERTS, CLASS A, TYPE 1 18"	FOOT	970	970
58700300	CONCRETE SEALER	SQ FT	2111	2111

* SPECIALTY ITEMS

MODEL: 056501
 FILE NAME: S:\2020\11\11\1189-024.DWG
 USER: JDS
 DATE: 10/15/2020



USER NAME = willewis	DESIGNED - JDS	REVISED -
PLLOT SCALE = 100.0000 ' / in.	DRAWN - WLL	REVISED -
PLLOT DATE = 10/15/2020	CHECKED - JDS	REVISED -
	DATE -	REVISED -

**STATE OF ILLINOIS
DEPARTMENT OF TRANSPORTATION**

**FUNKS GROVE STRUCTURE REHABILITATION
SUMMARY OF QUANTITIES**

SCALE: SHEET 3 OF 7 SHEETS STA. T0 STA.

F.A.I. RTE.	SECTION	COUNTY	TOTAL SHEETS	SHEET NO.
55	(57-9HB)BR	MCLEAN	67	5
CONTRACT NO. 70D16			ILLINOIS FED. AID PROJECT	

LOCATION:	FAI 55 INTERSTATE RURAL BRIDGE STA. 253+80.00 TO STA. 334+00.00
COUNTY:	MCLEAN
FUNDING BREAKOUT:	90% FED/10% ST
CONSTRUCTION CODE:	0059

CODE NO.	ITEM	UNIT	TOTAL QUANTITY	QUANTITY
63700805	CONCRETE BARRIER TRANSITION	FOOT	160	160
63800920	MODULAR GLARE SCREEN SYSTEM, TEMPORARY	FOOT	1970	1970
64200116	SHOULDER RUMBLE STRIPS, 16 INCH	FOOT	1955	1955
67000500	ENGINEER'S FIELD OFFICE, TYPE B	CAL MO	12	12
67100100	MOBILIZATION	L SUM	1	1
70103815	TRAFFIC CONTROL SURVEILLANCE	CAL DA	154	154
70107005	PAVEMENT MARKING BLACKOUT TAPE, 5"	FOOT	5874	5874
70107025	CHANGEABLE MESSAGE SIGN	CAL DA	328	328
70300220	TEMPORARY PAVEMENT MARKING - LINE 4"	FOOT	33382	33382
70400100	TEMPORARY CONCRETE BARRIER	FOOT	2736	2736
70400200	RELOCATE TEMPORARY CONCRETE BARRIER	FOOT	2736	2736
70500100	TEMPORARY STEEL PLATE BEAM GUARDRAIL, TYPE A	FOOT	412.5	412.5
70500615	TEMPORARY TRAFFIC BARRIER TERMINAL, TYPE 1	EACH	2	2

* SPECIALTY ITEMS

MODEL: 156638
FILE NAME: S:\23\23010B3710014.01.1189-024.DS_Work_Civil\1\CAD\05\CADD_5m\0405720D16-164-Summary.dgn

	USER NAME = willewis	DESIGNED - JDS	REVISED -
	DRAWN - WLL	CHECKED - JDS	REVISED -
	PLLOT SCALE = 100.0000 ' / in.	DATE -	REVISED -
	PLLOT DATE = 10/16/2020		

**STATE OF ILLINOIS
DEPARTMENT OF TRANSPORTATION**

FUNKS GROVE STRUCTURE REHABILITATION SUMMARY OF QUANTITIES			
SCALE:	SHEET 5	OF 7 SHEETS	STA. T O STA.

F.A.I. RTE.	SECTION	COUNTY	TOTAL SHEETS	SHEET NO.
55	(57-9HB)BR	MCLEAN	67	7
			CONTRACT NO. 70D16	
ILLINOIS FED. AID PROJECT				



REV. 12/22/20 REV. 10/29/20

LOCATION:	FAI 55 INTERSTATE RURAL BRIDGE STA. 253+80.00 TO STA. 334+00.00
COUNTY:	MCLEAN
FUNDING BREAKOUT:	90% FED/10% ST
CONSTRUCTION CODE:	0059

CODE NO.	ITEM	UNIT	TOTAL QUANTITY	QUANTITY
X7030005	TEMPORARY PAVEMENT MARKING REMOVAL	SQ FT	11128	11128
X7050167	TEMPORARY TRAFFIC BARRIER TERMINAL, TYPE 1, SPECIAL (TANGENT)	EACH	2	2
X7200201	WIDTH RESTRICTION SIGNING	L SUM	1	1
Z0001495	BRIDGE APPROACH SHOULDER REMOVAL	SQ YD	84	84
Z0004556	HOT-MIX ASPHALT SURFACE REMOVAL (DECK)	SQ YD	292	292
Z0006012	BRIDGE DECK LATEX CONCRETE OVERLAY, 2 1/4 INCHES	SQ YD	292	292
Z0006018	BRIDGE DECK LATEX CONCRETE OVERLAY, 3 INCHES	SQ YD	2154	2154
Z0012146	BRIDGE DECK SCARIFICATION 2 3/4"	SQ YD	2154	2154
Z0012157	BRIDGE DECK SCARIFICATION 1/2"	SQ YD	292	292
Z0012754	STRUCTURAL REPAIR OF CONCRETE (DEPTH EQUAL TO OR LESS THAN 5 INCHES)	SQ FT	1471	1471
Z0013798	CONSTRUCTION LAYOUT	L SUM	1	1
Z0029090	DIAMOND GRINDING (BRIDGE SECTION)	SQ YD	2591	2591
Ø Z0076600	TRAINEES	hour	500	500
Z0043800	PRECAST PRESTRESSED CONCRETE I-BEAM REPAIR	SQ FT	16	16
Ø Z0076604	TRAINEES - TRAINING PROGRAM GRADUATE	hour	500	500
Z0073200	TEMPORARY SHORING AND CRIBBING	EACH	28	28



* SPECIALTY ITEMS Ø 0042

MODEL: 056618
FILE NAME: S:\2020\70D16\70D16-1189-024.DWG
DATE: 10/15/2020
USER: JDS



USER NAME = willewis	DESIGNED - JDS	REVISED -
PLLOT SCALE = 100.0000' / in.	DRAWN - WLL	REVISED -
PLLOT DATE = 10/15/2020	CHECKED - JDS	REVISED -
	DATE -	REVISED -

**STATE OF ILLINOIS
DEPARTMENT OF TRANSPORTATION**

**FUNKS GROVE STRUCTURE REHABILITATION
SUMMARY OF QUANTITIES**

SCALE: SHEET 7 OF 7 SHEETS STA. T0 STA.

F.A.I. RTE.	SECTION	COUNTY	TOTAL SHEETS	SHEET NO.
55	(57-9HB)BR	MCLEAN	67	9
CONTRACT NO. 70D16			ILLINOIS FED. AID PROJECT	

44201807 CLASS D PATCHES, TYPE III, 13 INCH				
LOCATION		SQ YD		REMARKS
296+17.58 TO 296+23.58	LT	16.12		
299+06.20 TO 299+12.20	LT	16.57		
TOTAL		32.7		USE 33

44201809 CLASS D PATCHES, TYPE IV, 13 INCH				
LOCATION		SQ YD		REMARKS
296+31.14 TO 296+37.14	RT	28.38		
299+16.82 TO 299+22.82	RT	24.93		
TOTAL		53.3		USE 54

48203003 HOT-MIX ASPHALT SHOULDERS, 1 1/2"				
LOCATION		SQ YD		REMARKS
289+00.00 TO 293+24.81	RT	188.81		
292+12.27 TO 296+42.07	LT	191.45		
298+80.78 TO 307+00.00	LT	363.62		
304+30.00 TO 307+50.00	RT	142.25		
TOTAL		886.1		USE 887

48203033 HOT-MIX ASPHALT SHOULDERS, 9"				
LOCATION		SQ YD		REMARKS
281+90.00 TO 286+26.68	RT	97.48		INNER SHOULDER
281+90.00 TO 286+26.28	LT	97.92		INNER SHOULDER
285+10.00 TO 288+79.61	RT	83.06		OUTER SHOULDER
285+24.49 TO 288+72.47	LT	78.20		OUTER SHOULDER
287+66.05 TO 292+00.00	RT	97.29		INNER SHOULDER
287+66.05 TO 292+00.00	LT	97.10		INNER SHOULDER
304+00.00 TO 308+31.79	RT	97.04		INNER SHOULDER
304+00.00 TO 308+31.79	LT	96.86		INNER SHOULDER
307+23.25 TO 310+74.11	RT	78.89		OUTER SHOULDER
307+24.46 TO 310+79.93	LT	79.92		OUTER SHOULDER
309+67.74 TO 314+00.00	RT	96.85		INNER SHOULDER
309+67.74 TO 314+00.00	LT	96.78		INNER SHOULDER
TOTAL		1097.4		USE 1098

48300605 PORTLAND CEMENT CONCRETE SHOULDERS 11 1/4"				
LOCATION		SQ YD		REMARKS
296+22.07 TO 296+43.58	LT	23.77		
296+28.29 TO 296+48.31	LT	16.99		
296+36.90 TO 296+57.14	RT	16.35		
296+36.94 TO 296+57.07	RT	15.35		
298+80.78 TO 299+00.78	LT	23.04		
298+86.20 TO 299+07.24	LT	15.73		
298+96.82 TO 299+17.25	RT	15.92		
298+96.82 TO 299+17.21	RT	15.13		
TOTAL		142.3		USE 143

54213453 END SECTIONS 18"				
LOCATION	OFFSET	EACH		REMARKS
285+25.50	2.3	1.00		
285+25.50	2.3	1.00		
288+74.50	2.3	1.00		
288+74.50	2.3	1.00		
307+65.50	0.0	1.00		
310+34.50	0.0	1.00		
TOTAL		6.0		USE 6

54262712 METAL FLARED END SECTIONS 12"				
LOCATION	OFFSET	EACH		REMARKS
296+49.74	153.9	1.00		
296+71.83	160.0	1.00		
296+92.27	0.0	1.00		
298+61.00	0.0	1.00		
298+92.76	187.3	1.00		
299+03.14	131.4	1.00		
TOTAL		6.0		USE 6

542A0213 PIPE CULVERTS, CLASS A, TYPE 1 8"				
LOCATION		FOOT		REMARKS
286+96.18	LT	22.00		
286+96.18	RT	21.00		
309+00.00	LT	22.00		
309+00.00	RT	21.00		
TOTAL		86.0		USE 86

542A0223 PIPE CULVERTS, CLASS A, TYPE 1 18"				
LOCATION		FOOT		REMARKS
285+25.00 TO 286+96.50	LT	171.50		
285+25.00 TO 286+96.50	RT	171.50		
286+96.50 TO 288+75.00	LT	178.50		
286+96.50 TO 288+75.00	RT	178.50		
307+65.00 TO 309+00.00	CL	135.00		
309+00.00 TO 310+35.00	CL	135.00		
TOTAL		970.0		USE 970

60220200 MANHOLES, TYPE A, 4'-DIAMETER				
LOCATION	OFFSET	EACH		REMARKS
309+00.00	0.0	1.00		
TOTAL		1.0		USE 1

60224125 MANHOLES, TYPE A, 7'-DIAMETER				
LOCATION	OFFSET	EACH		REMARKS
286+96.18	0.0	1.00		
TOTAL		1.0		USE 1

60236200 INLETS, TYPE A, TYPE 8 GRATE				
LOCATION	OFFSET	EACH		REMARKS
286+96.18	21.2	1.00		
286+96.18	20.8	1.00		
309+00.00	21.2	1.00		
309+00.00	20.8	1.00		
TOTAL		4.0		USE 4

60300105 FRAMES AND GRATES TO BE ADJUSTED				
LOCATION	OFFSET	EACH		REMARKS
295+00.64	70.8	1.00		
302+55.00	74.8	1.00		
TOTAL		2.0		USE 2

60500060 REMOVING INLETS				
LOCATION	OFFSET	EACH		REMARKS
296+31.02	74.7	1.00		
296+35.06	74.6	1.00		
296+36.13	42.0	1.00		
296+40.35	42.1	1.00		
296+44.76	40.9	1.00		
296+45.52	88.9	1.00		
296+48.58	40.9	1.00		
296+49.05	88.8	1.00		
298+89.23	74.6	1.00		
298+92.98	74.7	1.00		
298+95.43	41.3	1.00		
298+99.52	41.6	1.00		
299+04.88	83.7	1.00		
299+05.10	41.2	1.00		
299+08.78	83.4	1.00		
299+08.99	41.4	1.00		
TOTAL		16.0		USE 16

61000050 CONCRETE THRUST BLOCKS			
LOCATION		EACH	REMARKS
PIPE 1		1.00	
PIPE 2		1.00	
PIPE 6		1.00	
PIPE 7		1.00	
PIPE 13		1.00	
PIPE 15		1.00	
TOTAL		6.0	USE 6

63400105 GUARD POSTS			
LOCATION		EACH	REMARKS
286+26.28 TO 286+88.18		17.00	
287+04.18 TO 287+66.06		17.00	
308+31.79 TO 308+91.76		16.00	
309+07.76 TO 309+67.74		16.00	
TOTAL		66.0	USE 66

63700805 CONCRETE BARRIER TRANSITION			
LOCATION		FOOT	REMARKS
296+22.07 TO 296+42.07	LT	20.00	
296+28.29 TO 296+48.31	LT	20.00	
296+36.94 TO 296+56.94	RT	20.00	
296+37.00 TO 296+57.00	RT	20.00	
298+80.78 TO 299+00.78	LT	20.00	
298+87.24 TO 299+07.24	LT	20.00	
298+96.86 TO 299+16.86	RT	20.00	
298+97.21 TO 299+17.21	RT	20.00	
TOTAL		160.0	USE 160

63800920 MODULAR GLARE SCREEN SYSTEM, TEMPORARY			
LOCATION		FOOT	REMARKS
289+41.01 TO 309+02.79		1969.37	
TOTAL		1969.4	USE 1970

64200116 SHOULDER RUMBLE STRIPS, 16 INCH			
LOCATION		FOOT	REMARKS
289+00.00 TO 293+24.81	RT	425.00	
292+12.27 TO 296+22.07	LT	410.00	
299+00.78 TO 307+00.00	LT	800.00	
304+30.00 TO 307+50.00	RT	320.00	
TOTAL		1955.0	USE 1955

70107005 PAVEMENT MARKING BLACKOUT TAPE, 5"			
LOCATION		FOOT	REMARKS
289+00.00 TO 307+49.72	SKIP-DASH	162.43	SB TRAFFIC CONTROL
281+90.00 TO 314+00.00	SOLID	2567.00	SB TRAFFIC CONTROL
288+50.00 TO 307+00.00	SKIP-DASH	162.50	NB TRAFFIC CONTROL
281+90.00 TO 314+00.00	SOLID	2981.56	NB TRAFFIC CONTROL
TOTAL		5873.5	USE 5874

70107025 CHANGEABLE MESSAGE SIGN			
LOCATION		CAL DA	REMARKS
I-55 NB		161.00	
I-55 SB		161.00	
CH36 NB		3.00	
CH36 SB		3.00	
TOTAL		328.0	USE 328

70300220 TEMPORARY PAVEMENT MARKING - LINE 4"			
LOCATION		FOOT	REMARKS
281+90.00 TO 334+00.00	WHITE	7072.94	SB TRAFFIC CONTROL
253+80.00 TO 324+00.00	YELLOW	9619.35	SB TRAFFIC CONTROL
261+90.00 TO 314+00.00	WHITE	7091.95	NB TRAFFIC CONTROL
271+90.00 TO 342+20.00	YELLOW	9597.58	NB TRAFFIC CONTROL
TOTAL		33381.8	USE 33382

MODEL: D:\p1\11\1189-024.DS\Work Order - 11\CADD\CADD Sheets\057001\6-shr-Schedule.dgn
 FILE NAME: 54262712.dwg
 PLOT SCALE = 2.0000' / in.
 PLOT DATE = 12/16/2020



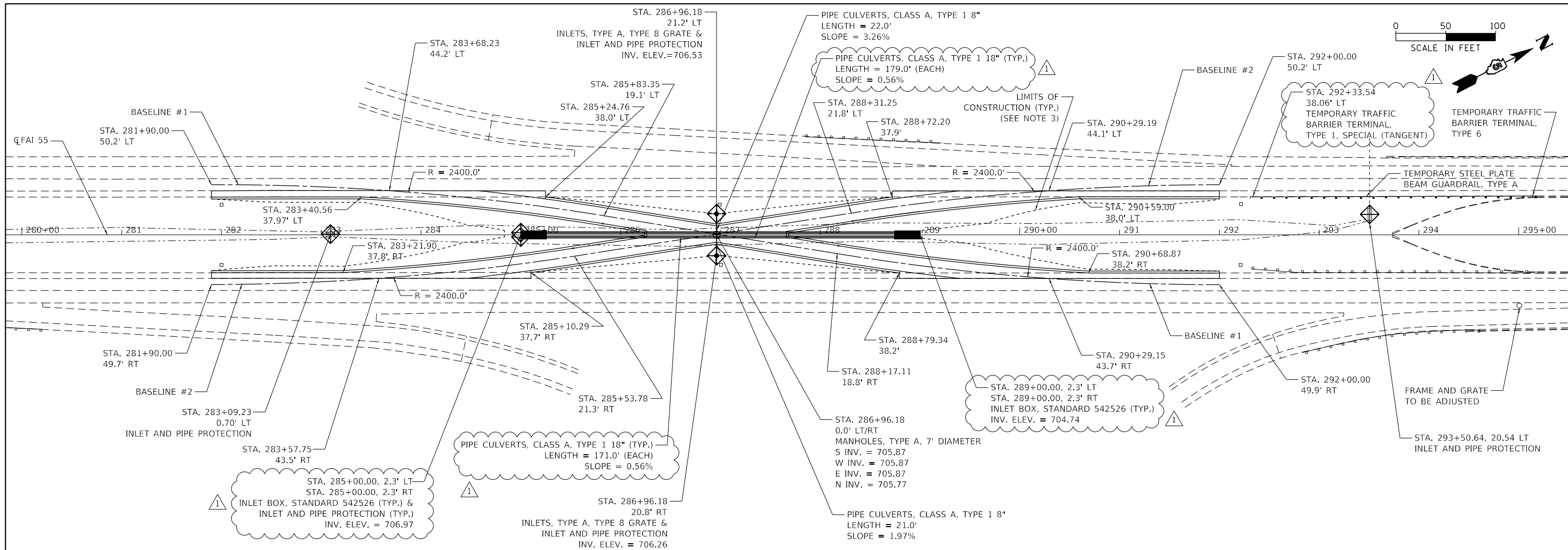
USER NAME = jdspller	DESIGNED - JDS	REVISED - 12/16/2020
	DRAWN - WLL	REVISED -
	CHECKED - JDS	REVISED -
	DATE -	REVISED -

**STATE OF ILLINOIS
DEPARTMENT OF TRANSPORTATION**

**FUNKS GROVE STRUCTURE REHABILITATION
SCHEDULE OF QUANTITIES**

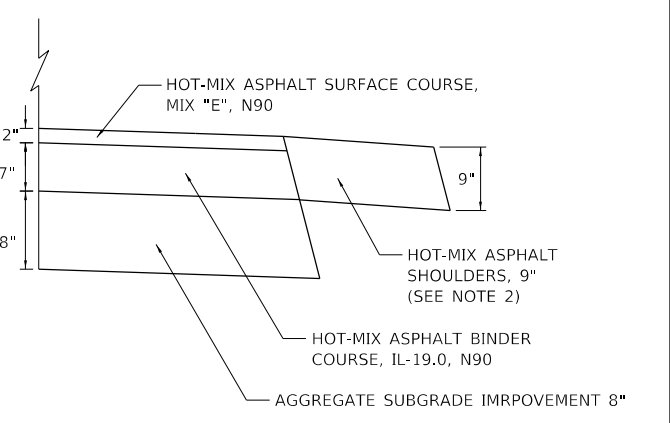
SCALE: SHEET 2 OF 3 SHEETS STA. TO STA.

F.A.I. RTE.	SECTION	COUNTY	TOTAL SHEETS	SHEET NO.
55	(57-9HB)BR	MCLEAN	67	11
CONTRACT NO. 70D16				
ILLINOIS FED. AID PROJECT				



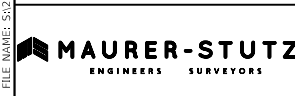
CENTERLINE SURVEY F.A.I. 55 STATION	BASELINE #1		BASELINE #2		OUTSIDE E.O.S. LEFT		E.O.P. FAR LEFT OF CL		E.O.P. NEAR LEFT OF CL		INSIDE E.O.S. LEFT		INSIDE E.O.S. RIGHT		E.O.P. NEAR RIGHT OF CL		E.O.P. FAR RIGHT OF CL		OUTSIDE E.O.S. RIGHT		LOCATION DESCRIPTION										
	OFFSET (FT)		OFFSET (FT)		OFFSET (FT)	ELEVATION	OFFSET (FT)	ELEVATION	OFFSET (FT)	ELEVATION	OFFSET (FT)	ELEVATION	OFFSET (FT)	ELEVATION	OFFSET (FT)	ELEVATION	OFFSET (FT)	ELEVATION	OFFSET (FT)	ELEVATION											
281+90.00	50.18	LT	49.70	RT			44.13	LT	712.48	37.89	LT	712.36	35.89	LT	711.97	35.96	RT	712.12	37.96	RT	712.41	43.66	RT	712.64	South End						
282+50.00	49.64	LT	48.84	RT			44.29	LT	712.13	37.92	LT	712.00	35.92	LT	711.92	35.89	RT	712.12	37.87	RT	712.20	43.53	RT	712.32							
283+00.00	48.05	LT	46.98	RT			44.25	LT	711.87	37.95	LT	711.74	35.95	LT	711.66	35.84	RT	711.87	37.84	RT	711.95	43.52	RT	712.06							
283+57.75			43.53	RT											33.50	RT	711.53	35.51	RT	711.61	43.53	RT	711.77	Baseline 2 cross EOP							
283+68.23	44.18	LT					44.18	LT	711.52	36.16	LT	711.36	34.16	LT	711.28										Baseline 1 cross EOP						
284+00.00	41.72	LT	40.11	RT			44.15	LT	711.36	33.69	LT	711.15	31.68	LT	711.07	30.07	RT	711.24	32.08	RT	711.32	43.53	RT	711.55	EOP Separation						
284+46.38			35.50	RT											25.44	RT	710.92	27.45	RT	711.00	43.55	RT	711.32	EOP Separation							
284+58.66	36.05	LT					44.10	LT	711.06	28.00	LT	710.74	25.99	LT	710.66										EOP Separation						
285+00.00	31.18	LT	29.03	RT			39.24	LT	710.62	23.11	LT	710.30	21.10	LT	710.22	18.94	RT	710.38	20.96	RT	710.46	37.10	RT	710.78	EOS Separation						
285+10.29			27.60	RT											17.55	RT	710.32	19.57	RT	710.40	35.72	RT	710.72	37.70	RT	710.64	EOS Separation				
285+24.76	27.90	LT			38.00	LT	710.42	35.98	LT	710.50	19.83	LT	710.18	17.82	LT	710.10									EOS Separation						
285+53.78			21.30	RT											11.18	RT	710.07	13.21	RT	710.15	29.40	RT	710.47	32.00	RT	710.37	Baseline 2 PC				
285+83.35	19.13	LT			29.26	LT	710.13	27.24	LT	710.21	11.03	LT	709.89	9.00	LT	709.81									Baseline 1 PT						
286+00.00	16.43	LT	14.13	RT	26.56	LT	710.05	24.53	LT	710.13	8.32	LT	709.81	6.30	LT	709.73	4.01	RT	709.81	6.03	RT	709.89	22.23	RT	710.21	24.25	RT	710.13	Inside EOP combine		
286+26.28	12.16	LT	10.05	RT	22.28	LT	709.92	20.26	LT	710.00	4.05	LT	709.68				1.96	RT	709.74	18.15	RT	710.06	20.18	RT	709.98			709.98	Inside EOP combine		
286+50.00	8.30	LT	6.37	RT	18.43	LT	709.81	16.41	LT	709.89												14.47	RT	709.93	16.49	RT	709.84			709.84	Middle of Crossover
286+96.18	0.80	LT	0.80	LT	10.92	LT	709.58	8.90	LT	709.66												7.30	RT	709.63	9.33	RT	709.55			709.55	Inside EOP combine
287+50.00	7.94	RT	9.15	LT	19.27	LT	709.28	17.25	LT	709.36												16.05	RT	709.34	18.07	RT	709.26			709.26	Baseline 1 PC
287+66.08	10.56	RT	11.65	LT	21.76	LT	709.19	19.74	LT	709.27	3.55	LT	708.95									16.05	RT	709.31	20.69	RT	709.22			709.22	Baseline 2 PT
288+17.11	18.85	RT													8.72	RT	708.64	10.74	RT	708.72	27.56	RT	709.06	28.98	RT	709.00			709.00	EOS Separation	
288+31.25			21.76	LT	11.64	LT	709.64	29.86	LT	708.91	13.67	LT	708.59	11.64	LT	708.51														708.51	EOS Separation
288+72.20			27.80	LT	37.90	LT	708.60	35.83	LT	708.68	19.68	LT	708.36	17.66	LT	708.28														708.28	EOS Separation
288+79.34	28.10	RT													18.03	RT	708.32	20.05	RT	708.40	36.19	RT	708.73	38.21	RT	708.65			708.65	EOS Separation	
289+00.00	30.84	RT	31.42	LT			39.48	LT	708.53	23.36	LT	708.21	21.34	LT	708.13	20.75	RT	708.22	22.77	RT	708.30	38.90	RT	708.62						708.62	EOP Separation
289+38.63			35.96	LT			44.00	LT	708.53	27.91	LT	708.21	25.90	LT	708.13															708.13	EOP Separation
289+40.43	35.62	RT													25.56	RT	708.22	27.57	RT	708.30	43.66	RT	708.62						708.62	EOP Separation	
290+00.00	41.40	RT	41.87	LT			44.09	LT	708.23	33.84	LT	708.02	31.83	LT	707.94	31.36	RT	708.04	33.37	RT	708.12	43.67	RT	708.33						708.33	Baseline 1 cross EOP
290+29.15	43.68	RT													33.65	RT	707.95	35.66	RT	708.03	43.68	RT	708.19						708.19	Baseline 2 cross EOP	
290+29.19			44.12	LT			44.12	LT	708.09	36.10	LT	707.93	34.10	LT	707.85															707.85	
291+00.00	47.74	RT	48.11	LT			44.13	LT	707.69	38.04	LT	707.57	36.04	LT	707.49	36.21	RT	707.58	38.21	RT	707.66	43.70	RT	707.81						707.81	
291+50.00	49.35	RT	49.66	LT			44.13	LT	707.41	38.04	LT	707.30	36.04	LT	707.22	36.23	RT	707.29	38.23	RT	707.37	43.71	RT	707.54						707.54	
292+00.00	49.91	RT	50.16	LT			44.13	LT	707.13	38.05	LT	706.93	36.05	LT	706.59	36.24	RT	706.90	38.24	RT	707.09	43.73	RT	707.27						707.27	North End

- NOTE:
1. THE CONTRACTOR SHALL CONSTRUCT THIS MEDIAN CROSSOVER USING THE STATIONS AND OFFSETS FOUND ON THIS SHEET. VALUES SHOWN ARE BASED ON THE ORIGINAL ROADWAY PLANS AND FIELD SURVEY. CONTRACTOR MAY MAKE MINOR ADJUSTMENTS IN THE FIELD AS APPROVED BY THE ENGINEER.
 2. SEE G.N.-406H ON GENERAL NOTES SHEET FOR SHOULDER MIX DESIGN.
 3. SEEDING SHALL BE APPLIED TO ALL FORESLOPES WITHIN THE LIMITS OF CONSTRUCTION FOR THE PROPOSED CROSSOVER.



CROSSOVER PAVEMENT STRUCTURE
TYPICAL SECTION

MODEL: Dwg.dwg
FILE NAME: S:\23703018\23710014\01_1189-024_D5_Work_Order_1\CADD\CADD_Sheets\05180114-1189-024_CrossOver.dwg



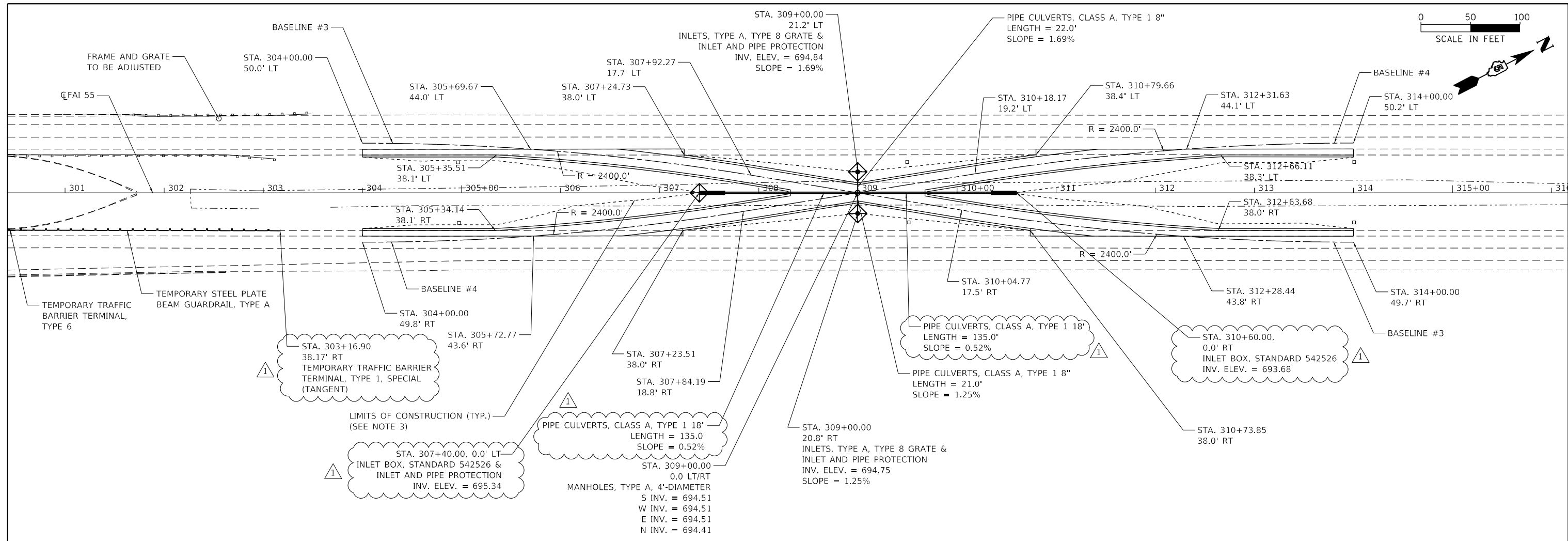
USER NAME = bmrwagehoft	DESIGNED - JDS	REVISED - 12/16/2020
PLOT SCALE = 100.0000' / in.	DRAWN - WLL	REVISED -
PLOT DATE = 12/17/2020	CHECKED - JDS	REVISED -
	DATE -	REVISED -

STATE OF ILLINOIS
DEPARTMENT OF TRANSPORTATION

FUNKS GROVE STRUCTURE REHABILITATION
SOUTH MEDIAN CROSSOVER

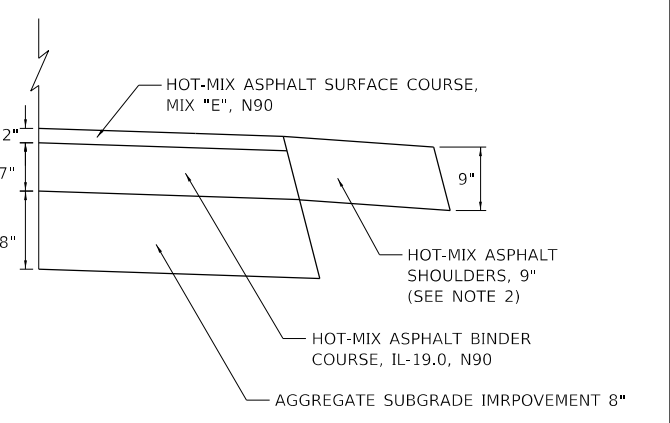
SCALE: SHEET OF SHEETS STA. TO STA.

F.A.I. RTE.	SECTION	COUNTY	TOTAL SHEETS	SHEET NO.
55	(57-9HB)BR	MCLEAN	67	17
CONTRACT NO. 70D16				
ILLINOIS		FED. AID PROJECT		



CENTERLINE SURVEY F.A.J. 55 STATION	BASELINE #3		BASELINE #4		OUTSIDE E.O.S. LEFT		E.O.P. FAR LEFT OF CL		E.O.P. NEAR LEFT OF CL		INSIDE E.O.S. LEFT		INSIDE E.O.S. RIGHT		E.O.P. NEAR RIGHT OF CL		E.O.P. FAR RIGHT OF CL		OUTSIDE E.O.S. RIGHT		LOCATION DESCRIPTION																	
	OFFSET (FT)		OFFSET (FT)		OFFSET (FT)	ELEVATION	OFFSET (FT)	ELEVATION	OFFSET (FT)	ELEVATION	OFFSET (FT)	ELEVATION	OFFSET (FT)	ELEVATION	OFFSET (FT)	ELEVATION	OFFSET (FT)	ELEVATION	OFFSET (FT)	ELEVATION																		
304+00.00	50.00	LT	49.79	RT			43.88	LT	700.76	38.08	LT	700.55	36.08	LT	700.31	36.08	RT	700.35	38.08	RT	700.60	43.68	RT	700.80										South End				
304+50.00	49.49	LT	49.26	RT			43.87	LT	700.50	38.11	LT	700.38	36.11	LT	700.30	36.06	RT	700.38	38.06	RT	700.46	43.74	RT	700.57														
305+00.00	47.93	LT	47.70	RT			43.93	LT	700.25	38.15	LT	700.13	36.14	LT	700.05	36.04	RT	700.13	38.04	RT	700.21	43.66	RT	700.32														
305+69.67	44.01	LT					44.01	LT	699.84	35.99	LT	699.68	33.98	LT	699.60																				Baseline 3 cross EOP			
305+72.77			43.56	RT											33.53	RT	699.72	35.54	RT	699.80	43.66	RT	699.96											Baseline 4 cross EOP				
306+00.00	41.66	LT	41.43	RT			44.04	LT	699.67	33.64	LT	699.46	31.63	LT	699.38	31.40	RT	699.54	33.40	RT	699.62	43.52	RT	699.82														
306+58.44	36.06	LT					44.11	LT	699.35	28.01	LT	699.03	26.00	LT	698.95																					EOP Separation		
306+62.39			35.39	RT											25.33	RT	699.11	27.34	RT	699.19	43.44	RT	699.51												EOP Separation			
307+00.00	31.19	LT	30.95	RT			39.25	LT	698.96	23.13	LT	698.64	21.11	LT	698.56	20.88	RT	698.67	22.89	RT	698.75	39.02	RT	699.07														
307+23.51			27.90	RT											17.78	RT	698.54	19.80	RT	698.62	35.95	RT	698.94	37.96	RT	698.86										EOS Separation		
307+24.73	27.90	LT			38.04	LT	698.76	36.02	LT	698.84	19.87	LT	698.51	17.85	LT	698.43																				EOS Separation		
307+50.00	24.36	LT	24.12	RT	34.47	LT	698.63	32.44	LT	698.71	16.27	LT	698.39	14.25	LT	698.30	14.01	RT	698.39	16.03	RT	698.47	32.20	RT	698.79	34.23	RT	698.71										
307+84.49			18.78	RT											8.65	RT	698.19	10.67	RT	698.27	26.88	RT	698.60	28.91	RT	698.52										Baseline 3 PT		
307+92.27	17.74	LT			27.88	LT	698.41	25.85	LT	698.50	9.63	LT	698.17	7.60	LT	698.09																				Baseline 4 PC		
308+31.79	11.20	LT	11.10	RT	21.33	LT	698.21	19.30	LT	698.30	3.09	LT	697.97																							Inside EOP combine		
308+50.00	8.18	LT	8.14	RT	18.32	LT	698.12	16.29	LT	698.20										16.25	RT	698.23	18.27	RT	698.15											Middle of Crossover		
308+99.76	0.06	LT	0.06	RT	10.07	LT	697.87	10.07	LT	697.95										8.17	RT	697.95	10.20	RT	697.87													
309+50.00	8.39	RT	8.09	LT	18.22	LT	697.60	16.20	LT	697.68										16.50	RT	697.69	18.52	RT	697.61													
309+67.74	11.32	RT	10.97	LT	21.10	LT	697.51	19.07	LT	697.59	2.86	LT	697.26							3.22	RT	697.27	19.43	RT	697.60	21.46	RT	697.52								Inside EOP combine		
310+04.77	17.46	RT													7.32	RT	697.00	9.35	RT	697.08	25.57	RT	697.41	27.59	RT	697.33										Baseline 3 PC		
310+18.17			19.16	LT	29.29	LT	697.24	27.26	LT	697.32	11.05	LT	697.00	9.02	LT	696.91																					Baseline 4 PT	
310+50.00	25.74	RT	22.55	LT	34.21	LT	697.10	32.19	LT	697.18	16.02	LT	696.86	13.99	LT	696.78	14.40	RT	696.74	16.42	RT	696.82	32.59	RT	697.15	34.61	RT	697.07										
310+73.85	27.90	RT													17.78	RT	696.64	19.80	RT	696.72	35.94	RT	697.05	37.96	RT	696.97											EOS Separation	
310+79.66			28.30	LT	38.41	LT	696.91	36.40	LT	696.99	20.25	LT	696.67	18.23	LT	696.59																					EOS Separation	
311+00.00	31.28	RT	31.00	LT			39.06	LT	696.88	22.93	LT	696.56	20.92	LT	696.48	21.20	RT	696.51	23.22	RT	696.59	39.34	RT	696.91														EOP Separation
311+37.15	35.62	RT													25.56	RT	696.55	27.57	RT	696.63	43.66	RT	696.95														EOP Separation	
311+42.52			36.02	LT			44.06	LT	696.85	27.97	LT	696.53	25.96	LT	696.45																							
312+00.00	41.63	RT	41.59	LT			44.06	LT	696.52	33.56	LT	696.31	31.55	LT	696.23	31.59	RT	696.34	33.60	RT	696.42	43.76	RT	696.62														
312+28.44	43.80	RT													33.77	RT	696.23	35.78	RT	696.31	43.80	RT	696.47														Baseline 3 cross EOP	
312+31.63			44.06	LT			44.06	LT	696.35	36.04	LT	696.19	34.03	LT	696.11																							Baseline 4 cross EOP
313+00.00	47.76	RT	47.97	LT			44.08	LT	695.98	38.22	LT	695.86	36.22	LT	695.78	35.98	RT	695.84	37.98	RT	695.92	43.77	RT	696.08														
313+50.00	49.26	RT	49.59	LT			44.10	LT	695.72	38.15	LT	695.60	36.15	LT	695.52	35.94	RT	695.60	37.94	RT	695.68	43.74	RT	695.80														
314+00.00	49.72	RT	50.16	LT			44.12	LT	695.46	38.08	LT	695.24	36.08	LT	694.94	35.91	RT	695.00	37.91	RT	695.27	43.70	RT	695.52														

NOTE:
 1. THE CONTRACTOR SHALL CONSTRUCT THIS MEDIAN CROSSOVER USING THE STATIONS AND OFFSETS FOUND ON THIS SHEET. VALUES SHOWN ARE BASED ON THE ORIGINAL ROADWAY PLANS AND FIELD SURVEY. CONTRACTOR MAY MAKE MINOR ADJUSTMENTS IN THE FIELD AS APPROVED BY THE ENGINEER.
 2. SEE G.N.-406H ON GENERAL NOTES SHEET FOR SHOULDER MIX DESIGN.
 3. SEEDING SHALL BE APPLIED TO ALL FORESLOPES WITHIN THE LIMITS OF CONSTRUCTION FOR THE PROPOSED CROSSOVER.



CROSSOVER PAVEMENT STRUCTURE
TYPICAL SECTION

MODEL: D:\mstz\37103\18\237103.dwg
 FILE NAME: 37103\18\237103.dwg
 USER: bmnwagehoft
 DESIGNED: JDS
 DRAWN: WLL
 CHECKED: JDS
 DATE: 12/17/2020



USER NAME = bmnwagehoft	DESIGNED - JDS	REVISED - 12/16/2020
PLOT SCALE = 100.0000' / in.	DRAWN - WLL	REVISED -
PLOT DATE = 12/17/2020	CHECKED - JDS	REVISED -
	DATE -	REVISED -

STATE OF ILLINOIS
DEPARTMENT OF TRANSPORTATION

FUNKS GROVE STRUCTURE REHABILITATION
NORTH MEDIAN CROSSOVER

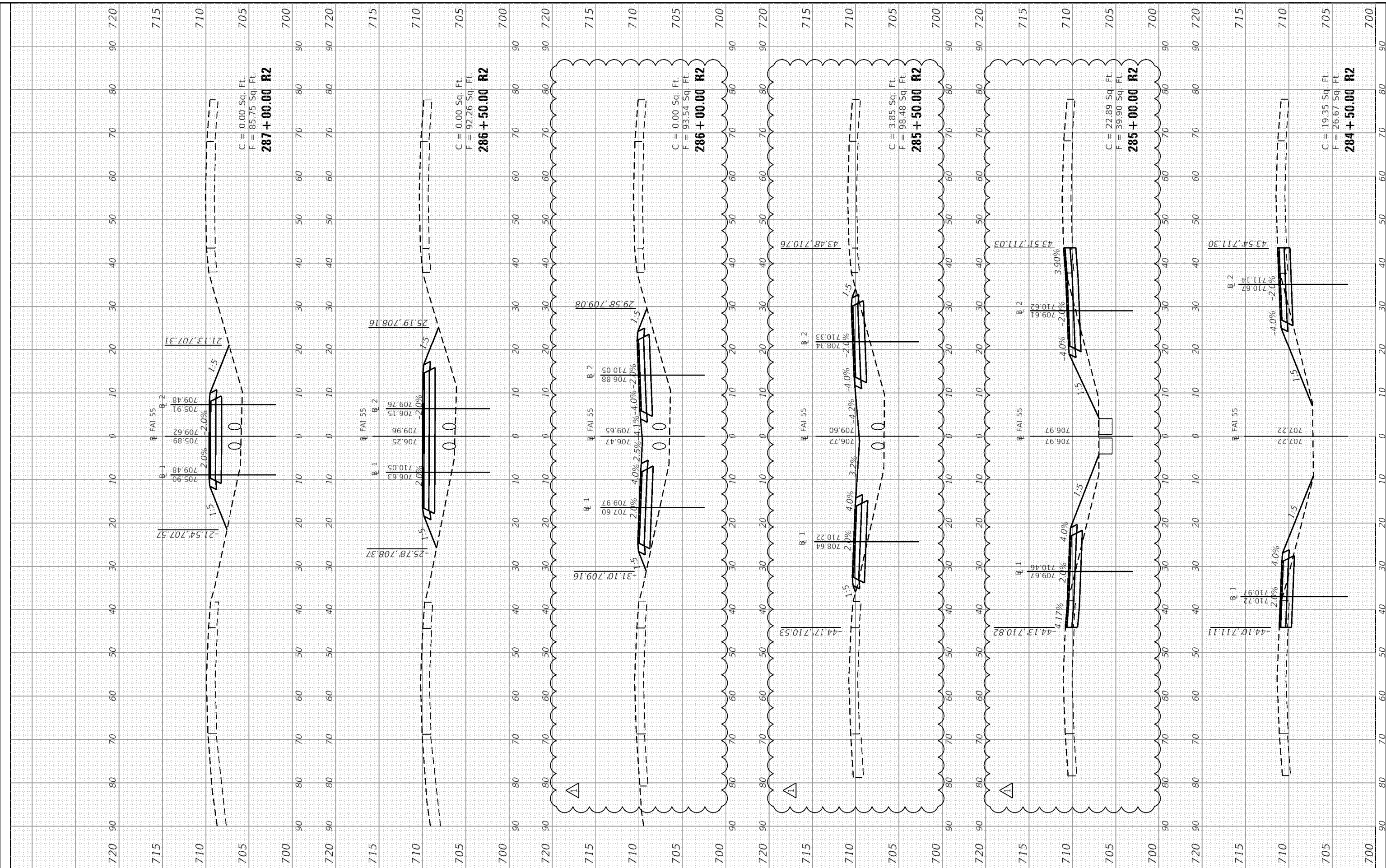
SCALE: SHEET OF SHEETS STA. TO STA.

F.A.I. RTE. 55	SECTION (57-9HB)BR	COUNTY MCLEAN	TOTAL SHEETS 67	SHEET NO. 18
CONTRACT NO. 70D16			ILLINOIS FED. AID PROJECT	

FINAL SURVEY	SURVEYED	BY	DATE
NOTE BOOK	PLOTTED		
AREAS	TEMPLATE		
AREAS CHECKED	AREAS CHECKED		

ORIGINAL SURVEY	SURVEYED	BY	DATE
NOTE BOOK	PLOTTED		
AREAS	TEMPLATE		
AREAS CHECKED	AREAS CHECKED		

MODEL: Definit
 FILE NAME: S:\231201\B2311801\4.01.1189-024 D5 Work Order - ILLCAD\ADD_Sheets\5710016-RR-VSC-155.dgn



MAURER-STUTZ
 ENGINEERS SURVEYORS

USER NAME	= bmrwehaft
DESIGNED	-
DRAWN	-
CHECKED	-
DATE	-
PLOT SCALE	= 0.0333' / in
PLOT DATE	= 12/15/2020

DESIGNED	-
DRAWN	-
CHECKED	-
DATE	-

REVISED	-	12/16/2020
REVISED	-	
REVISED	-	
REVISED	-	

**STATE OF ILLINOIS
 DEPARTMENT OF TRANSPORTATION**

**FUNKS GROVE STRUCTURE REHABILITATION
 MEDIAN CROSSOVER CROSS SECTIONS**

SCALE: SHEET 2 OF 8 SHEETS STA.284+50.00 R2 TO STA. 287+00.00 R2

F.A.I. RTE.	SECTION	COUNTY	TOTAL SHEETS	SHEET NO.
55	(57-9H)BR	MCLEAN	67	61
CONTRACT NO. 70D16				
ILLINOIS FED. AID PROJECT				

FINAL SURVEY	SURVEYED	BY	DATE
NOTE BOOK	PLOTTED		
AREA	TEMPLATE		
NO.	AREAS CHECKED		

ORIGINAL SURVEY	SURVEYED	BY	DATE
NOTE BOOK	PLOTTED		
AREA	TEMPLATE		
NO.	AREAS CHECKED		

MODEL: Definit
 FILE NAME: S:\2371201\B23718014.01 (189-024 DS Work Order - ILLCAD)CAD - Sheets\572016-9H-V55-65.dgn



USER NAME	= bmrwehft
DESIGNED	-
DRAWN	-
CHECKED	-
DATE	-
PLOT SCALE	= 0.0333' / in
PLOT DATE	= 12/15/2020

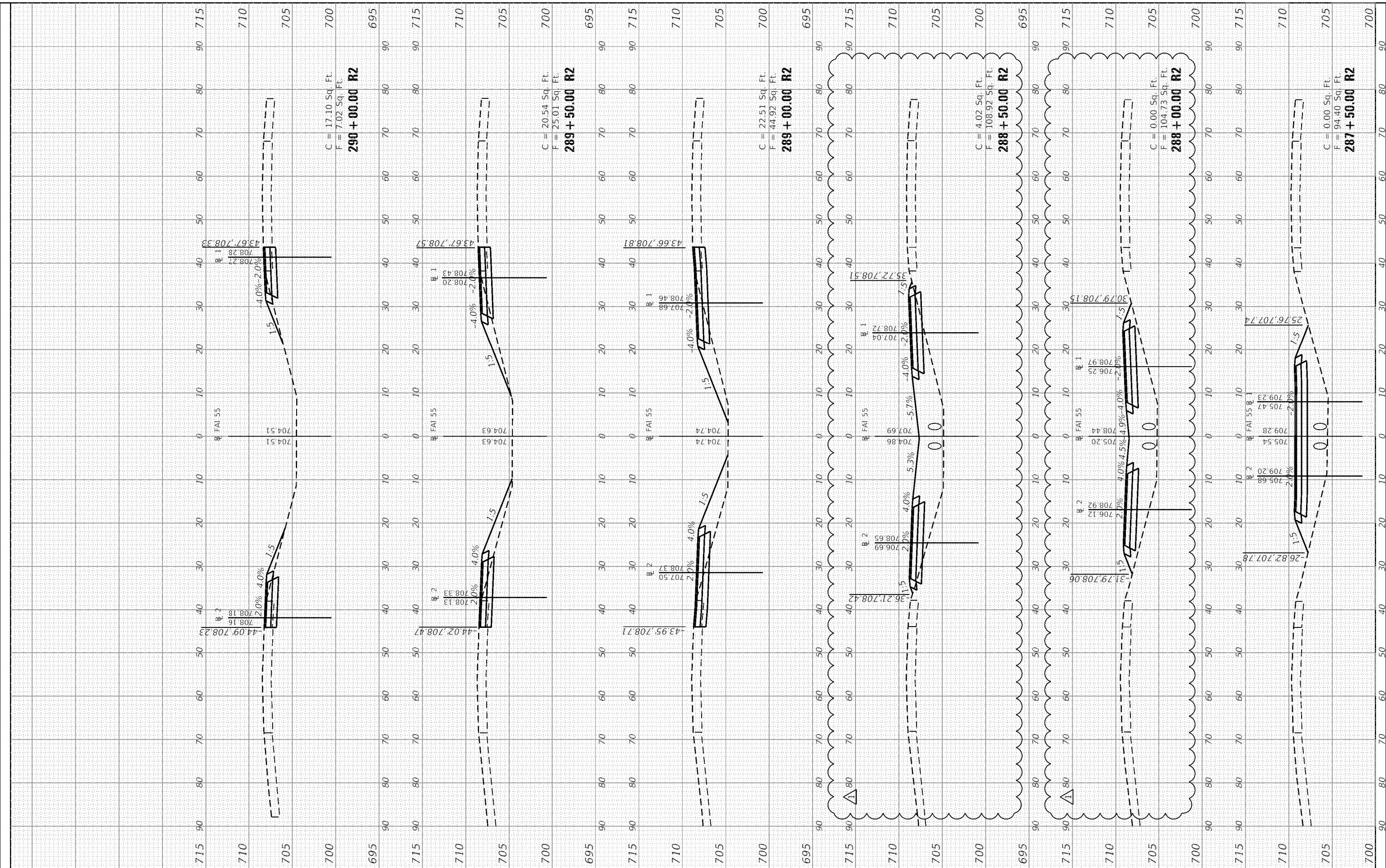
REVISION	-	12/16/2020
REVISION	-	
REVISION	-	
REVISION	-	

STATE OF ILLINOIS
 DEPARTMENT OF TRANSPORTATION

FUNKS GROVE STRUCTURE REHABILITATION
 MEDIAN CROSSOVER CROSS SECTIONS

SCALE: SHEET 3 OF 8 SHEETS STA.287+50.00 R2 TO STA. 290+00.00 R2

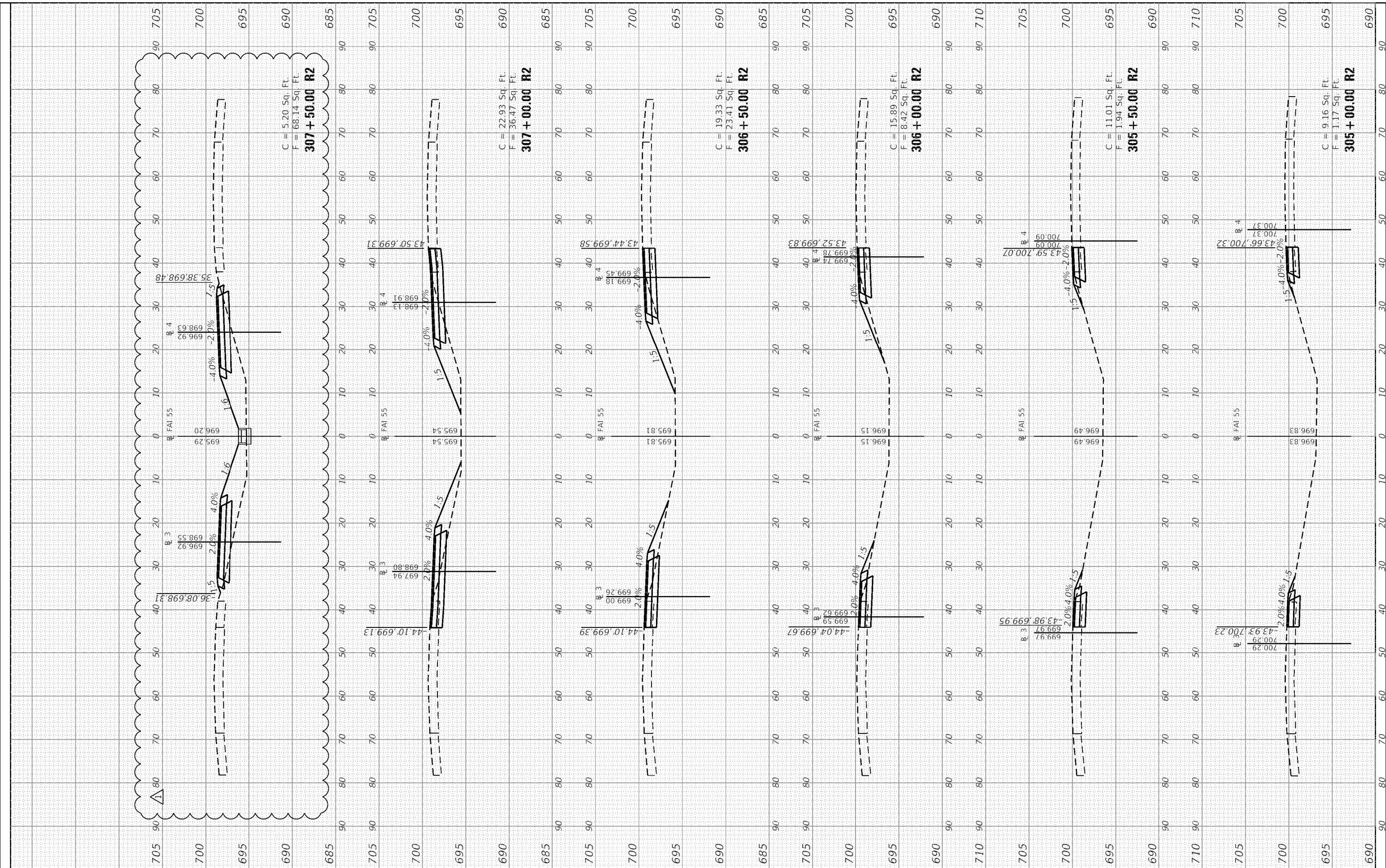
F.A.I. RTE.	SECTION	COUNTY	TOTAL SHEETS	SHEET NO.
55	(57-9HB)BR	MCLEAN	67	62
			CONTRACT NO. 70D16	
			ILLINOIS FED. AID PROJECT	



FINAL SURVEY	SURVEYED	BY	DATE
NOTE BOOK	PLOTTED		
AREAS CHECKED	TEMPLATE		
	AREAS CHECKED		

ORIGINAL SURVEY	SURVEYED	BY	DATE
NOTE BOOK	PLOTTED		
AREAS CHECKED	TEMPLATE		
	AREAS CHECKED		

MODEL: Definit
 FILE NAME: S:\231201\B23118014.01_1189-024_D5_Work_Order_1\CAD\CADD_Sheets\5710D16-9H-VSC-155.dwg



USER NAME = bmrwehaft	DESIGNED -	REVISD -
	DRAWN -	REVISD -
PLOT SCALE = 0.0333' / in	CHECKED -	REVISD -
PLOT DATE = 12/15/2020	DATE -	REVISD -

STATE OF ILLINOIS
 DEPARTMENT OF TRANSPORTATION

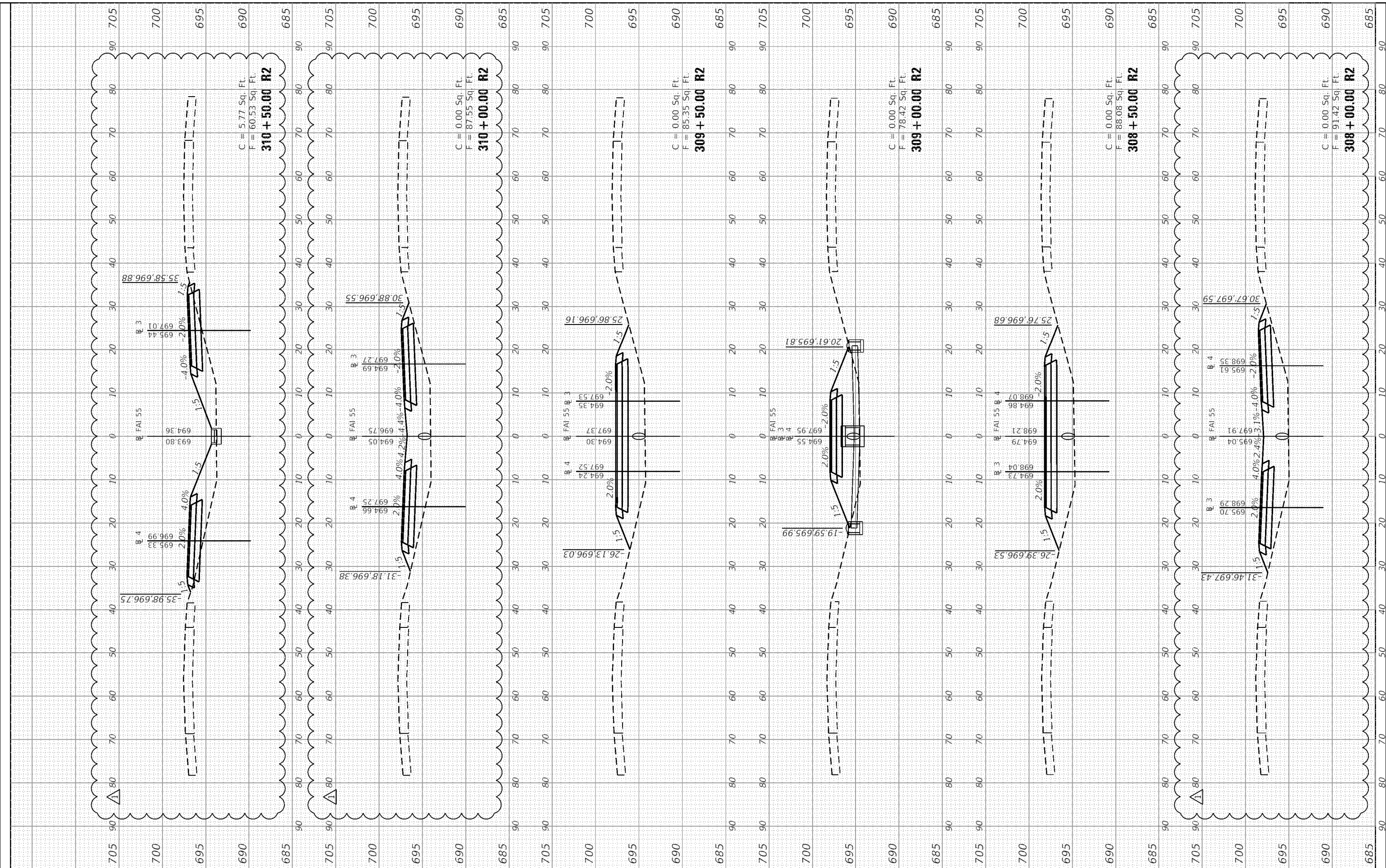
FUNKS GROVE STRUCTURE REHABILITATION
 MEDIAN CROSSOVER CROSS SECTIONS

F.A.I. RTE. 55	SECTION (57-9HB)BR	COUNTY MCLEAN	TOTAL SHEETS 67	SHEET NO. 64
CONTRACT NO. 70D16				
ILLINOIS FED. AID PROJECT				

FINAL SURVEY	SURVEYED	BY	DATE
NOTE BOOK	PLOTTED		
AREAS CHECKED	TEMPLATE		
	AREAS CHECKED		

ORIGINAL SURVEY	SURVEYED	BY	DATE
NOTE BOOK	PLOTTED		
AREAS CHECKED	TEMPLATE		
	AREAS CHECKED		

MODEL: Definit
 FILE NAME: S:\231201\B2311801\4.01.1189-024.D5 Work Order - ILLCAD\CADD_Sheets\07\016-9H-VS-155.dgn



MAURER-STUTZ
 ENGINEERS SURVEYORS

USER NAME	= bmrwagehaft
PLOT SCALE	= 0.0333' / in
PLOT DATE	= 12/15/2020

DESIGNED	-
DRAWN	-
CHECKED	-
DATE	-

REVISION	-	12/16/2020
REVISION	-	
REVISION	-	
REVISION	-	

**STATE OF ILLINOIS
 DEPARTMENT OF TRANSPORTATION**

**FUNKS GROVE STRUCTURE REHABILITATION
 MEDIAN CROSSOVER CROSS SECTIONS**

SCALE: SHEET 6 OF 8 SHEETS STA.308+00.00 R2 TO STA. 310+50.00 R2

F.A.I. RTE.	SECTION	COUNTY	TOTAL SHEETS	SHEET NO.
55	(57-9HB)BR	MCLEAN	67	65
CONTRACT NO. 70D16				
ILLINOIS FED. AID PROJECT				