

INDEX OF SHEETS

- 1.) COVER SHEET: LOCATION MAP
- 2.) INDEX OF SHEETS, LIST OF DISTRICT 1 STANDARD DETAILS, LIST OF ILLINOIS DOT HIGHWAY STANDARDS, GENERAL NOTES, BENCHMARKS, HOT-MIX ASPHALT MIXTURE REQUIREMENTS
- 3.-8.) SUMMARY OF QUANTITIES
- 9.-11.) TYPICAL SECTIONS
- 12.-15.) EARTHWORK COMPUTATIONS
- 16.-26.) PLAN AND PROFILE: FAU 1587 (McCARTHY ROAD) - FAU 1065 (ILLINOIS STREET) TO CH500JSW (WALKER ROAD) (EXISTING AND PROPOSED ROADWAY BIKE AND SHARED-LANE PLAN)
- 27.) MAINTENANCE OF TRAFFIC
- 28.) MAINTENANCE OF TRAFFIC PIPE HANDRAIL DETAILS
- 29.) STORM WATER POLLUTION PREVENTION PLAN
- 30.) EROSION CONTROL NOTES AND DETAILS
- 31.-41.) PLAN AND PROFILE: FAU 1587 (McCARTHY ROAD) - FAU 1065 (ILLINOIS STREET) TO CH500JSW (WALKER ROAD) (DRAINAGE, UTILITIES, LANDSCAPE, AND EROSION CONTROL)
- 42.-47.) PLAN AND PROFILE: FAU 1587 (McCARTHY ROAD) - FAU 1065 (ILLINOIS STREET) TO CH500JSW (WALKER ROAD) (PROPOSED PAVEMENT MARKING PLAN)
- 48.-70.) PLAN: FAU 1587 (McCARTHY ROAD) ADA RAMP DETAILS
- 71.-81.) DISTRICT 1 STANDARD DETAILS
- 82.-91.) CROSS SECTIONS

LIST OF DISTRICT 1 STANDARD DETAILS

- 71.) BD-08 DETAILS FOR FRAMES AND LIDS ADJUSTMENTS WITH MILLING
- 72.) BD-22 PAVEMENT PATCHING FOR HMA SURFACED PAVEMENT
- 73.) BD-24 CURB OR CURB AND GUTTER REMOVAL AND REPLACEMENT
- 74.) BD-32 BUTT JOINT AND HMA TAPER DETAILS
- 75.) TC-10 TRAFFIC CONTROL AND PROTECTION FOR SIDE ROADS, INTERSECTIONS AND DRIVEWAYS
- 76.) TC-11 TYPICAL APPLICATIONS RAISED REFLECTIVE PAVEMENT MARKERS (SNOW-PLOW RESISTANT)
- 77.) TC-13 DISTRICT ONE TYPICAL PAVEMENT MARKINGS
- 78.) TC-14 TRAFFIC CONTROL & PROTECTION AT TURN BAYS (TO REMAIN OPEN TO TRAFFIC)
- 79.) TC-16 PAVEMENT MARKING LETTERS AND SYMBOLS FOR TRAFFIC STAGING
- 80.) TC-22 ARTERIAL ROAD INFORMATION SIGN
- 81.) TC-26 DRIVEWAY ENTRANCE SIGNING

LIST OF ILLINOIS DOT HIGHWAY STANDARDS

- 000001-08 STANDARD SYMBOLS, ABBREVIATIONS, AND PATTERNS
- 280001-07 TEMPORARY EROSION CONTROL SYSTEMS
- 424001-11 PERPENDICULAR CURB RAMPS FOR SIDEWALKS
- 424006-04 DIAGONAL CURB RAMPS FOR SIDEWALKS
- 424016-05 MID-BLOCK CURB RAMPS FOR SIDEWALKS
- 424021-06 DEPRESSED CORNER FOR SIDEWALKS
- 424026-03 ENTRANCE/ALLEY PEDESTRAIN CROSSINGS
- 442201-03 CLASS C AND D PATCHES
- 542401-04 METAL FLARED END SECTION FOR PIPE CULVERTS
- 602301-04 INLET-TYPE A
- 602306-03 INLET-TYPE B
- 604001-05 FRAMES & LIDS-TYPE 1
- 606001-07 CONCRETE CURB TYPE B AND COMBINATION CONCRETE CURB & GUTTER
- 701006-05 OFF-RD OPERATIONS, 2L, 2W, 15' (4.5 m) TO 24" (600 mm) FROM PAVEMENT EDGE
- 701301-04 LANE CLOSURE, 2L, 2W, SHORT TIME OPERATIONS
- 701311-03 LANE CLOSURE, 2L, 2W, MOVING OPERATIONS-DAY ONLY
- 701501-06 URBAN LANE CLOSURE, 2 L, 2 W UNDIVIDED
- 701701-10 URBAN LANE CLOSURE, MULTILANE INTERSECTION
- 701801-06 SIDEWALK, CORNER OR CROSSWALK CLOSURE
- 701901-08 TRAFFIC CONTROL DEVICES
- 720001-01 SIGN PANEL MOUNTING DETAILS
- 720006-04 SIGN PANEL ERECTION DETAILS
- 720011-01 METAL POSTS FOR SIGNS, MARKERS AND DELINEATORS
- 780001-05 TYPICAL PAVEMENT MARKINGS

GENERAL NOTES

PAVING AND STORM SEWERS

SPECIFICATIONS

THE APRIL 1, 2016 EDITION OF THE "STANDARD SPECIFICATIONS FOR ROAD AND BRIDGE CONSTRUCTION", AND THE JANUARY 1, 2021 EDITION OF THE "SUPPLEMENTAL SPECIFICATIONS AND RECURRING SPECIAL PROVISIONS", PREPARED BY THE ILLINOIS DEPARTMENT OF TRANSPORTATION, AND THE 2009 EDITION OF THE "MANUAL OF UNIFORM TRAFFIC CONTROL DEVICES" SHALL GOVERN ALL WORK ASSOCIATED WITH THIS PROJECT. THE "STANDARD SPECIFICATIONS FOR WATER AND SEWER MAIN CONSTRUCTION IN ILLINOIS" MAY GOVERN OTHER WORK ON THIS PROJECT AS INDICATED BY REFERENCE.

CARE IN EXCAVATION

THE CONTRACTOR SHALL EXERCISE CARE DURING EARTH AND/OR TRENCHING OPERATIONS TO AVOID DAMAGE TO LOCAL UTILITY SERVICES, WATER VALVES, MANHOLES, CATCH BASINS, INLETS, BUFFALO BOXES, AND OTHER STRUCTURES. ALL DAMAGE DONE BY THE CONTRACTOR, WHETHER THE STRUCTURE OR SERVICE IS VISIBLE AT THE GROUND SURFACE OR NOT, SHALL BE REPAIRED OR REPLACED BY THE CONTRACTOR IN ACCORDANCE WITH ARTICLE 105.07 OF THE "STANDARD SPECIFICATIONS FOR ROAD AND BRIDGE CONSTRUCTION".

NOTIFICATION OF IDOT DISTRICT 1 TRAFFIC CONTROL SUPERVISOR

THE CONTRACTOR SHALL CONTACT THE IDOT DISTRICT 1 TRAFFIC CONTROL SUPERVISOR FOR ARTERIALS AT KALPANA.KANNAN-HOSADURGA@ILLINOIS.GOV AT LEAST 72 HOURS IN ADVANCE OF BEGINNING WORK.

NOTIFICATION OF PUBLIC UTILITIES

PRIOR TO STARTING CONSTRUCTION, THE CONTRACTOR SHALL NOTIFY THE OFFICIALS OF THE PUBLIC WORKS DEPARTMENT OF THE LOCAL MUNICIPALITY, J.U.L.I.E. AT 1-800-892-0123 OR 811, AND OTHER PUBLIC AND PRIVATE UTILITIES TO MAKE ARRANGEMENTS TO LOCATE THEIR VARIOUS FACILITIES WITHIN THE LIMITS OF CONSTRUCTION UNDER THIS CONTRACT, AND TO PROVIDE ADEQUATE PROTECTION AND INSPECTION. THE CONTRACTOR SHALL DETERMINE THE ACTUAL LOCATION OF ALL SUCH FACILITIES IN THE FIELD.

TRAFFIC CONTROL DEVICES

BARRICADES AND WARNING SIGNS SHALL BE PROVIDED IN ACCORDANCE WITH ARTICLE 107.14 OF THE "STANDARD SPECIFICATIONS FOR ROAD AND BRIDGE CONSTRUCTION".

PROTECTION OF SIGNS AND PROPERTY

ALL TRAFFIC SIGNS, STREET SIGNS, ETC., THAT INTERFERE WITH THE CONSTRUCTION OPERATIONS SHALL BE REMOVED AND PLACED AT NEW LOCATIONS AS DESIGNATED BY THE ENGINEER. IN ADDITION, ALL MAIL BOXES THAT INTERFERE WITH CONSTRUCTION SHALL BE SIMILARLY RELOCATED IN ACCORDANCE WITH ARTICLES 107.20 AND 107.21 OF THE "STANDARD SPECIFICATIONS FOR ROAD AND BRIDGE CONSTRUCTION".

SUPERINTENDENCE

THE CONTRACTOR SHALL HAVE A COMPETENT SUPERINTENDENT ON THE PROJECT SITE AT ALL TIMES, IRRESPECTIVE OF THE AMOUNT OF WORK SUBLET. THE SUPERINTENDENT SHALL BE CAPABLE OF READING AND UNDERSTANDING THE PLANS AND SPECIFICATIONS, SHALL HAVE FULL AUTHORITY TO EXECUTE ORDERS TO EXPEDITE THE PROJECT AND SHALL BE RESPONSIBLE FOR SCHEDULING AND HAVING CONTROL OF ALL THE WORK AS THE AGENT OF THE GENERAL CONTRACTOR. FAILURE TO COMPLY WITH THIS PROVISION WILL RESULT IN A SUSPENSION OF WORK AS PROVIDED IN ARTICLE 108.07.

CONSTRUCTION LAYOUT STAKES

THE CONTRACTOR SHALL PROVIDE THE ENGINEER WITH WOODEN STAKES OR OTHER LAYOUT MATERIALS FOR LAYOUT OF THE LINES AND GRADES OF THE PROJECT. FAILURE TO PROVIDE STAKES IN A TIMELY MANNER WILL RESULT IN A DELAY IN STAKEOUT WHICH WILL BE APPLICABLE AGAINST THE TIME LIMIT FOR COMPLETION SHOWN IN THE PROJECT SPECIFICATIONS. LINE AND GRADE WILL BE ESTABLISHED BY THE ENGINEER AT REGULAR INTERVALS ON PERMANENTLY PAVED SURFACES, SIDEWALKS OR STAKES AT THE ENGINEER'S OPTION, ALL WITHIN THE PUBLIC RIGHT-OF-WAY AND SHALL BE TRANSFERRED BY THE CONTRACTOR TO THE ACTUAL LINE OF CONSTRUCTION.

PROJECT SAFETY

WHEN MILLED PAVEMENT IS OPEN TO TRAFFIC THE MAXIMUM GRADE DIFFERENTIAL BETWEEN PASSES OF THE MILLING MACHINE SHALL NOT EXCEED 1-1/2 INCHES WHERE THE SPEED LIMIT IS 45 MPH OR LESS AND 1 INCH WHERE THE SPEED LIMIT IS GREATER THAN 45 MPH. WITH WRITTEN APPROVAL FROM THE ENGINEER, A MAXIMUM GRADE DIFFERENTIAL OF 3 INCHES MAY BE ALLOWED IF THE EDGE OF THE MILLING IS SLOPED A MINIMUM 1:3 (V:H).

BUTT JOINTS WILL BE INSTALLED AT THE ENDS OF ALL RESURFACING (WHERE RESURFACING MEETS EXISTING PAVEMENT), IN ACCORDANCE WITH THE "BUTT JOINT AND HOT-MIX ASPHALT TAPER DETAILS" SHEET INCLUDED IN THE PLANS, UNLESS OTHERWISE SPECIFIED.

THE CONTRACTOR SHALL COMPLY WITH AND OBSERVE THE RULES AND REGULATIONS OF O.S.H.A. AND APPROPRIATE AUTHORITIES REGARDING SAFETY PROVISIONS. THE CONTRACTOR, ENGINEER, AND OWNER SHALL EACH BE RESPONSIBLE FOR THEIR OWN RESPECTIVE AGENTS AND EMPLOYEES.

THE ENGINEER AND OWNER ARE NOT RESPONSIBLE FOR THE CONSTRUCTION MEANS, METHODS, TECHNIQUES, SEQUENCES OR PROCEDURES, TIME OF PERFORMANCE, PROGRAMS, OR FOR ANY SAFETY PRECAUTIONS USED BY THE CONTRACTOR. THE CONTRACTOR IS SOLELY RESPONSIBLE FOR EXECUTION OF HIS/HER WORK IN ACCORDANCE WITH THE DOCUMENTS AND SPECIFICATIONS.

MISCELLANEOUS

ALL PATCHING ON THE HOT-MIX ASPHALT PORTIONS OF THIS PROJECT WILL BE MARKED OUT AND CONSTRUCTED AFTER MILLING. A PROOF ROLL WILL BE REQUIRED PRIOR TO PATCHING

BEFORE BEGINNING WORK, THE CONTRACTOR SHALL RETAIN AND RECORD FOR FUTURE REFERENCE, ALL EXISTING PAVEMENT MARKING LINES (AND RAISED REFLECTIVE PAVEMENT MARKERS) SO THESE LOCATIONS CAN BE RE-ESTABLISHED FOR FINAL STRIPING. EXACT LOCATIONS OF ALL PAVEMENT MARKINGS SHALL BE AS DIRECTED BY THE ENGINEER.

TWO WEEKS PRIOR TO PLACEMENT OF PERMANENT PAVEMENT MARKINGS, THE ENGINEER SHALL CONTACT PATRICE HARRIS, AREA TRAFFIC FIELD ENGINEER AT PATRICE.HARRIS@ILLINOIS.GOV.

ALL MAILBOXES IN CONFLICT WITH THE PROPOSED IMPROVEMENT SHALL BE TEMPORARILY RELOCATED AND THEN PERMANENTLY RELOCATED IN ACCORDANCE WITH ARTICLE 107.20 OF THE STANDARD SPECIFICATIONS AND NO ADDITIONAL COMPENSATION WILL BE ALLOWED.

BENCHMARKS

NOTE:

ELEVATIONS REFERENCE THE NORTH AMERICAN VERTICAL DATUM OF 1988 (NAVD88).

LOCATION (ON McCARTHY ROAD)

LOCATION (ON McCARTHY ROAD)	ELEVATION
FOUND CROSS IN THE CENTER OF THE SIDEWALK APPROXIMATELY 28' NORTHWEST OF THE CENTERLINE OF CASS STREET	642.392
FOUND DISK APPROXIMATELY 180' EAST OF THE CENTERLINE OF JULIA STREET WEST OF DRIVEWAY, NORTH OF SIDEWALK	724.541
FOUND CROSS IN THE CENTER OF THE SIDEWALK APPROXIMATELY 445' SOUTHEAST OF THE CENTERLINE OF 4TH STREET	739.404
FOUND CROSS ON THE EAST SIDE OF THE CONCRETE DRIVEWAY JUST NORTHEAST OF WALKER ROAD	730.259

HOT-MIX ASPHALT MIXTURE REQUIREMENTS

MIXTURE TYPE	AIR VOIDS @ NDES
ROADWAY PAVEMENT	
HOT-MIX ASPHALT SURFACE COURSE, MIX "D", N70, (IL-9.5mm), 1-1/2"	4.0% @ 70 GYR
POLYMERIZED HOT-MIX ASPHALT BINDER COURSE, IL-4.75, N50, 3/4"	3.5% @ 50 GYR
HOT-MIX ASPHALT BASE COURSE WIDENING, 6", (HMA BINDER IL-19 mm)	4.0% @ 70 GYR
HOT-MIX ASPHALT BASE COURSE WIDENING, 6-3/4", (HMA BINDER IL-19 mm)	4.0% @ 70 GYR
PATCHING	
CLASS D PATCHES, TYPE II-IV, (HMA BINDER IL-19 mm), 10" (IN 2 LIFTS)	4% @ 70 GYR
DRIVEWAYS	
HOT-MIX ASPHALT SURFACE COURSE, MIX "D", N50, (IL-9.5mm), 4" (IN TWO LIFTS)	4% @ 50 GYR

HOT-MIX SURFACE REMOVAL TO BE PERFORMED BEFORE PATCHING OPERATIONS
 THE UNIT WEIGHT TO CALCULATE ALL HOT-MIX ASPHALT SURFACE MIXTURE QUANTITIES IS 112 LBS/SQ YD/IN.
 "THE "AC TYPE" FOR POLYMERIZED HMA MIXES SHALL BE "SBS/SBR PG 76-22" AND FOR NON-POLYMERIZED HMA THE "AC TYPE" SHALL BE "PG 64-22" UNLESS MODIFIED BY SPECIAL PROVISIONS"
 FOR USE OF RECYCLED MATERIALS SEE SPECIAL PROVISIONS

FILE NAME FAU 1587 (McCARTHY ROAD) FAU 1065 (ILLINOIS STREET) TO CH500JSW (WALKER ROAD) #19383 BIKE LANES AND RESURFACING	USER NAME =	DESIGNED -- JLC	REVISED -- 2-21-20 THK
		DRAWN -- JFP	REVISED -- 8-06-20 JLC
	PLOT SCALE =	CHECKED -- THK	REVISED -- 10-02-20 JLC
	PLOT DATE =	DATE -- 7-6-17	REVISED -- 10-26-20 JLC
			REVISED -- 12-22-20 JLC

**STATE OF ILLINOIS
DEPARTMENT OF TRANSPORTATION**

**INDEX OF SHEETS, LIST OF DISTRICT 1 STANDARD DETAILS,
LIST OF ILLINOIS DOT HIGHWAY STANDARDS, GENERAL NOTES,
BENCHMARKS, HOT-MIX ASPHALT MIXTURE REQUIREMENTS**

SCALE: NONE SHEET NO. OF SHEETS STA. TO STA.



F.A.U. RTE.	SECTION	COUNTY	TOTAL SHEETS	SHEET NO.
1587	14-00052-00-BT	COOK	91	2
FED. ROAD DIST. NO.			ILLINOIS FED. AID PROJECT	7805 (279)
CONTRACT NO. 61886				

Specialty Item	Special Provision	Code Number	Item	Unit	Total Quantity	Construction Code Roadway 0005
		44000600	SIDEWALK REMOVAL	SQ FT	7476	7476
		44201765	CLASS D PATCHES, TYPE II, 10 INCH	SQ YD	321	321
		44201769	CLASS D PATCHES, TYPE III, 10 INCH	SQ YD	42	42
		44201771	CLASS D PATCHES, TYPE IV, 10 INCH	SQ YD	74	74
		50300300	PROTECTIVE COAT	SQ YD	1304	1304
*		50901760	PIPE HANDRAIL	FOOT	425	425
		52200800	SEGMENTAL CONCRETE BLOCK WALL	SQ FT	469	469
		54213657	PRECAST REINFORCED CONCRETE FLARED END SECTIONS 12"	EACH	5	5
		54213672	PRECAST REINFORCED CONCRETE FLARED END SECTIONS 27"	EACH	2	2
		54262710	METAL FLARED END SECTIONS 10"	EACH	1	1
		550A0130	STORM SEWERS, CLASS A, TYPE 1, 27"	FOOT	145	145
	*	550B0040	STORM SEWERS, CLASS B, TYPE 1, 10"	FOOT	20	20
	*	550B0050	STORM SEWERS, CLASS B, TYPE 1, 12"	FOOT	390	390
	*	550B0070	STORM SEWERS, CLASS B, TYPE 1, 15"	FOOT	5	5
		55100500	STORM SEWER REMOVAL 12"	FOOT	20	20
*		56400100	FIRE HYDRANTS TO BE MOVED	EACH	1	1

Revised 12/30/20

FILE NAME FAU 1587 (McCARTHY ROAD)
FAU 1085 (ILLINOIS STREET) TO CH500J5W (WALKER ROAD)
#19383 BIKE LANES AND RESURFACING

USER NAME =	DESIGNED -- JLC	REVISED -- 2-21-20 THK
PLOT SCALE =	DRAWN -- JFP	REVISED -- 8-06-20 JLC
PLOT DATE =	CHECKED -- THK	REVISED -- 8-11-20 JLC
	DATE -- 7-6-17	REVISED -- 10-02-20 JLC

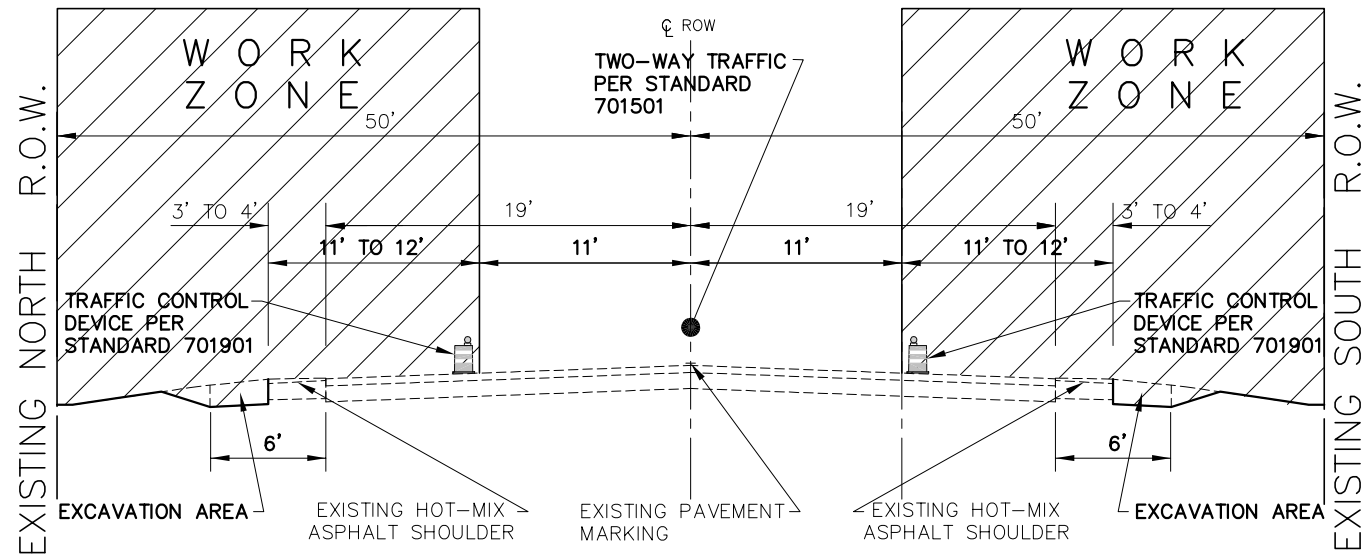
STATE OF ILLINOIS
DEPARTMENT OF TRANSPORTATION

SUMMARY OF QUANTITIES

SCALE: NONE SHEET NO. OF SHEETS STA. TO STA.

F.A.U. RTE. 1587	SECTION	COUNTY	TOTAL SHEETS	SHEET NO.
	14-00052-00-BT	COOK	91	5
FED. ROAD DIST. NO.		ILLINOIS FED. AID PROJECT	CONTRACT NO. 61G86 7805 (279)	

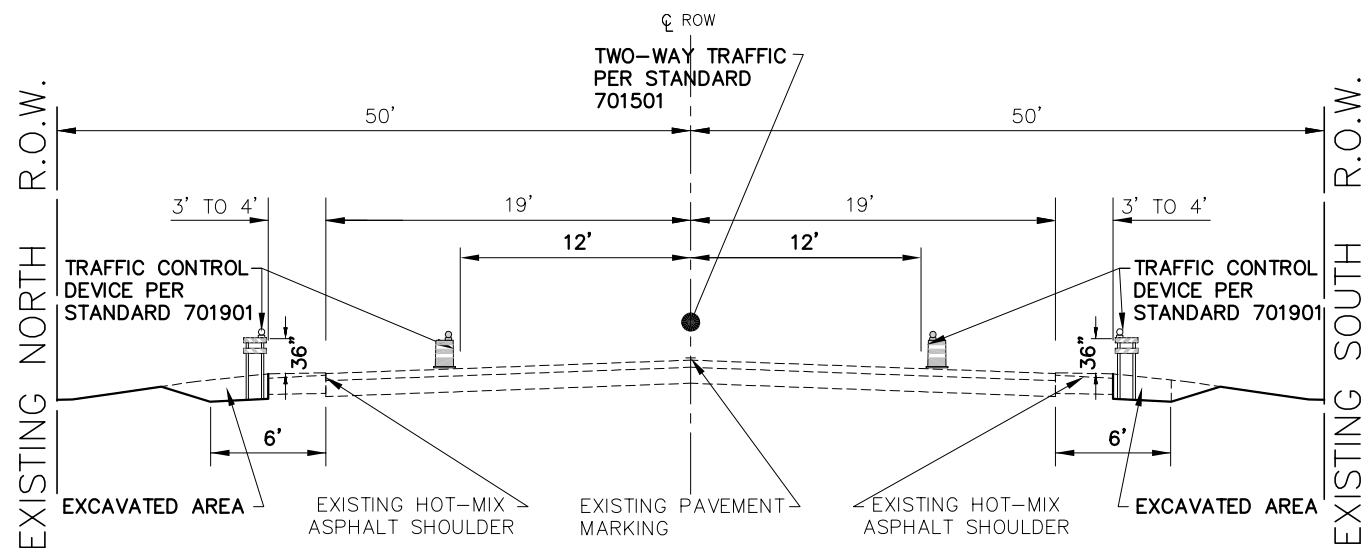
NOVOTNY ENGINEERING
545 Plainfield Road, Suite A
Willowbrook, IL 60527
T: (630) 887.8640
F: (630) 887.0132
Illinois Professional Design Firm No. 164-00928



- 1.) TWO-WAY TRAFFIC WILL BE MAINTAINED DURING THE DAY UTILIZING A ELEVEN FOOT LANE WIDTH AND I.D.O.T. STANDARD 701501.
- 2.) THE CONTRACTOR SHALL BE ABLE TO UTILIZE THE REMAINING PAVEMENT TO THE NORTH AND SOUTH FOR HIS WORK.

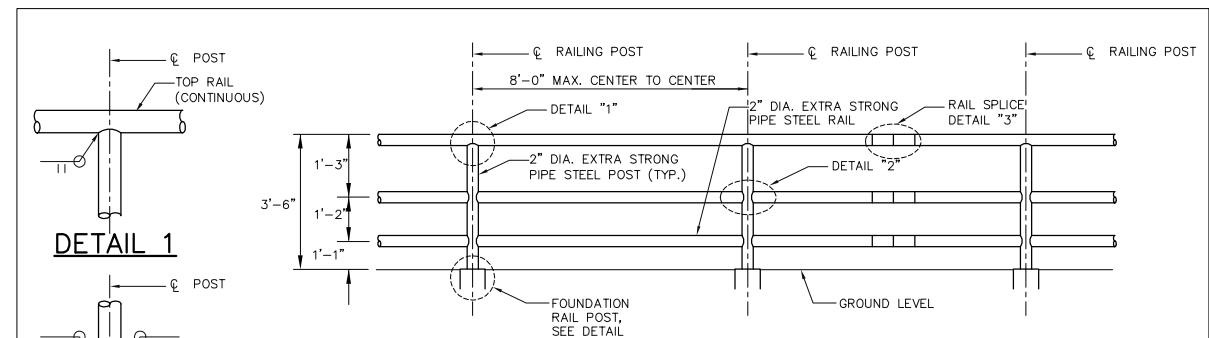
NOTE:
NO SHORT-TERM PAVEMENT MARKING IS PROPOSED FOR STAGE 1 - EXISTING PAVEMENT CENTERLINE WILL BE USED FOR DAY AND NIGHT TRAFFIC

**STAGE 1
(DAY TIME)**
STA. 78+43 TO STA. 84+64, FAU 1587 (McCARTHY ROAD)

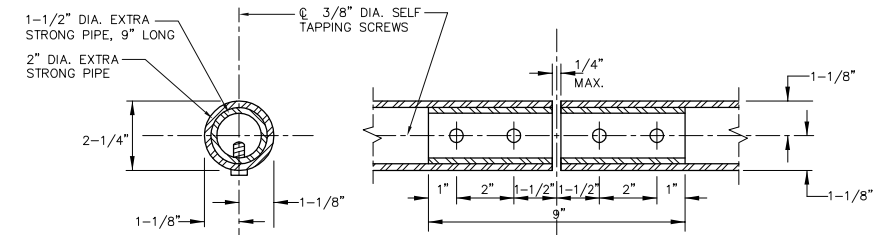


- 1.) TWO-WAY TRAFFIC WILL BE MAINTAINED AT NIGHT ALLOWING TWO ELEVEN FOOT LANES.
- 2.) TEMPORARY BARRIERS WILL NOT BE NEEDED FOR UNDERCUT OPERATIONS OF FOUR DAYS OR LESS.
- 3.) BARRELS TO BE MOVED AT THE END OF EACH DAY OF CONSTRUCTION TO OPEN TWO-WAY TRAFFIC AND BARRICADES TO BE USED IN EXCAVATED AREAS, AT ENDS, AND DRIVEWAYS

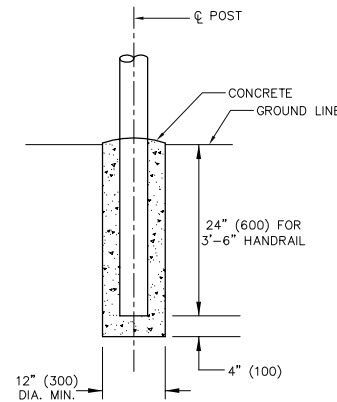
**STAGE 1
(NIGHT TIME)**
STA. 78+43 TO STA. 84+64, FAU 1587 (McCARTHY ROAD)



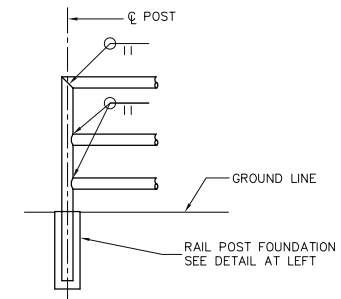
TYPICAL PIPE HANDRAIL ELEVATION



DETAIL 3 RAIL SPLICE



**RAIL POST
FOUNDATION DETAIL**



**ELEVATION SHOWING
END POST**

NOTES:

1. Railing shall be according to Section 509 of the Standard Specifications, except as noted, and will be paid for at the contract unit price per foot.
2. Hollow structural steel tubing shall conform to the requirements of ASTM designation A 500, Grade B, Structural Steel Tubing.
3. All other steel shapes and plates shall conform to the requirements of AASHTO M-270M, Grade 345.
4. All posts, railings, splices, anchor devices, and bent plates shall be galvanized after shop fabrication according to AASHTO M-111 and ASTM A-385. All bolts, nuts, and washers shall be galvanized according to AASHTO M-232 except stainless steel bolts as noted.
5. Vent holes for galvanizing shall be placed in the posts and rails at locations that will not allow the accumulation of moisture in the members.
6. Rail to match horizontal profile of bike lane.
7. Concrete for handrail post foundation shall be Class SI

PIPE HANDRAIL DETAILS

FILE NAME
FAU 1587 (McCARTHY ROAD)
FAU 1065 (ILLINOIS STREET) TO CH500JSW (WALKER ROAD)
#19383 BIKE LANES AND RESURFACING

USER NAME =
PLOT SCALE =
PLOT DATE =

DESIGNED - JLC
DRAWN - JFP
CHECKED - THK
DATE - 7-6-17

REVISED - 2-21-20 THK
REVISED - 7-30-20 JLC
REVISED - 12-22-20 JLC
REVISED -

**STATE OF ILLINOIS
DEPARTMENT OF TRANSPORTATION**

**MAINTENANCE OF TRAFFIC
STA. 78+43 TO STA. 84+64, FAU 1587 (McCARTHY ROAD)**
PIPE HANDRAIL DETAILS
SCALE: 1"=5' SHEET NO. OF SHEETS STA. TO STA.

F.A.U. RTE. 1587	SECTION	COUNTY	TOTAL SHEETS	SHEET NO.
	14-00052-00-BT	COOK	91	28
CONTRACT NO. 61G86				
FED. ROAD DIST. NO.		ILLINOIS FED. AID PROJECT		78Q5 (279)

12/29/2020 1:53:01 PM