

SUMMARY OF QUANTITIES				
VILLAGE OF DIETERICH				
2016 ITEP				
SECTION # 16-00009-00-SW				
ITEM No.	ITEM	UNIT	QUANTITY	100% LOCAL (PARTICIPATING)
20100210	TREE REMOVAL (OVER 15 UNITS DIAMETER)	UNIT	120	
20800150	TRENCH BACKFILL	CU YD	827	
28000400	PERIMETER EROSION BARRIER	FOOT	234	
28000500	INLET AND PIPE PROTECTION	EACH	35	
28000510	INLET FILTERS	EACH	35	
35400100	PORTLAND CEMENT CONCRETE BASE COURSE WIDENING 6"	SQ YD	613	
40604052	HOT-MIX ASPHALT SURFACE COURSE, IL-9.5, MIX "C", N70	TON	669	669
40800050	INCIDENTAL HOT-MIX ASPHALT SURFACING	TON	8	
42001300	PROTECTIVE COAT	SQ YD	2,658	
42300200	PORTLAND CEMENT CONCRETE DRIVEWAY PAVEMENT, 6 INCH	SQ YD	472	
42300400	PORTLAND CEMENT CONCRETE DRIVEWAY PAVEMENT, 8 INCH	SQ YD	386	
42400100	PORTLAND CEMENT CONCRETE SIDEWALK 4 INCH	SQ FT	13,123	
42400800	DETECTABLE WARNINGS	SQ FT	643	
44000100	PAVEMENT REMOVAL	SQ YD	196	
44000200	DRIVEWAY PAVEMENT REMOVAL	SQ YD	138	
44000500	COMBINATION CONCRETE CURB & GUTTER REMOVAL	FOOT	45	
44000600	SIDEWALK REMOVAL	SQ FT	8,000	
50105220	PIPE CULVERT REMOVAL	FOOT	30	
54213650	PRECAST REINFORCED CONCRETE FLARED END SECTIONS 15"	EACH	1	
550A2320	STORM SEWERS, RUBBER GASKET, CLASS A, TYPE 1 12"	FOOT	377	
550A2330	STORM SEWERS, RUBBER GASKET, CLASS A, TYPE 1 15"	FOOT	563	
550A2520	STORM SEWERS, RUBBER GASKET, CLASS A, TYPE 2 12"	FOOT	154	
550A2530	STORM SEWERS, RUBBER GASKET, CLASS A, TYPE 2 15"	FOOT	361	
550A2420	STORM SEWERS, RUBBER GASKET, CLASS A, TYPE 1 48"	FOOT	43	
56500300	DOMESTIC METER VAULTS TO BE ADJUSTED	EACH	10	
60218300	MANHOLES, TYPE A, 4'-DIAMETER, TYPE 1 FRAME, OPEN LID	EACH	1	
60221000	MANHOLES, TYPE A, 5'-DIAMETER, TYPE 1 FRAME, OPEN LID	EACH	1	
60222230	MANHOLES, TYPE A, 5'-DIAMETER, TYPE 23 FRAME AND GRATE	EACH	2	
60223700	MANHOLES, TYPE A, 6'-DIAMETER, TYPE 1 FRAME, OPEN LID	EACH	1	
60224005	MANHOLES, TYPE A, 6'-DIAMETER, TYPE 8 GRATE	EACH	1	
60234200	INLETS, TYPE A, TYPE 1 FRAME OPEN LID	EACH	4	
60235700	INLETS, TYPE A, TYPE 3 FRAME AND GRATE	EACH	2	
60237460	INLETS, TYPE A, TYPE 23 FRAME AND GRATE	EACH	12	
60236200	INLETS, TYPE A, TYPE 8 GRATE	EACH	3	
60240301	INLETS, TYPE B, TYPE 8 GRATE	EACH	1	
60240327	INLETS, TYPE B, TYPE 23 FRAME AND GRATE	EACH	8	
60286600	VALVE BOXES TO BE ADJUSTED	EACH	2	

CONTINUED ON RIGHT

* DENOTES SPECIALTY ITEM

CONTINUED				
ITEM No.	ITEM	UNIT	QUANTITY	100% LOCAL (PARTICIPATING)
60300305	FRAMES AND LIDS TO BE ADJUSTED	EACH	5	
60500060	REMOVING INLETS	EACH	9	
60600605	CONCRETE CURB, TYPE B	FOOT	7	
60624600	CORRUGATED MEDIAN	SQ FT	2,512	
60604400	COMBINATION CONCRETE CURB AND GUTTER, TYPE B-6.18	FOOT	4,084	
67100100	MOBILIZATION	L SUM	1	
* 72400500	RELOCATE SIGN PANEL ASSEMBLY - TYPE A	EACH	8	
* 78000100	THERMOPLASTIC PAVEMENT MARKING LETTERS AND SYMBOLS	SQ FT	13	
* 78000400	THERMOPLASTIC PAVEMENT MARKING - LINE 6"	FOOT	243	243
* 78000650	THERMOPLASTIC PAVEMENT MARKING - LINE 24"	FOOT	65	65
* 81028390	UNDERGROUND CONDUIT, PVC, 4" DIA	FOOT	619	
* 81603035	UNIT DUCT, 600V 2-1C NO. 6, 1/C NO. 6 GROUND, (XLP-TYPE USE), 1" DIA. POLYETHYLENE	FOOT	3,028	
* 82500300	LIGHTING CONTROLLER, POLE MOUNTED, 240 VOLT, 30 AMP	EACH	1	
* 83600200	LIGHT POLE FOUNDATION, 24" DIAMETER	FOOT	140	
* A2000810	TREE, ACER PLATANOIDES CRIMSON KING (CRIMSON KING NORWAY MAPLE), 1-1/4" CALIPER, BALLED AND BURLAPPED	EACH	4	
X0323389	STORM SEWER CONNECTION	EACH	5	
X0325379	DIRECTIONAL BORING	FOOT	60	
X0327171	SCARIFY EXISTING SURFACE	SQ YD	3,852	3,852
X0327301	RELOCATE EXISTING MAILBOX	EACH	1	
X0350810	BOLLARD REMOVAL	EACH	5	
X1200046	STORM SEWERS, CLASS B, TYPE 2 8"	FOOT	99	
X1200050	BOX CULVERT REMOVAL	FOOT	88	
X2020410	EARTH EXCAVATION (SPECIAL)	CU YD	1,180	
* X2200003	FENCE (SPECIAL)	FOOT	124	
X4230710	PORTLAND CEMENT CONCRETE DRIVEWAY PAVEMENT, 6 INCH, SPECIAL	SQ YD	1,071	
X4240420	PORTLAND CEMENT CONCRETE SIDEWALK 4 INCH, SPECIAL	SQ FT	3,405	
X5510100	STORM SEWER REMOVAL	FOOT	95	
X6024503	INLETS TO BE ADJUSTED WITH NEW FRAME AND GRATE (SPECIAL)	EACH	1	
X7010216	TRAFFIC CONTROL AND PROTECTION (SPECIAL)	L SUM	1	
* X8040102	ELECTRIC SERVICE INSTALLATION, SPECIAL	EACH	1	
* X8300001	LIGHT POLE, SPECIAL	EACH	12	
* X2500900	SEEDING CLASS 1 (SPECIAL)	ACRE	1	
* XX009135	LIGHT POLE, SPECIAL, TYPE 2	EACH	15	
20022800	FENCE REMOVAL	FOOT	166	
20055608	STORM SEWER (WATER MAIN REQUIREMENTS) 12 INCH	FOOT	21	
20056611	STORM SEWER (WATER MAIN REQUIREMENTS) 16 INCH	FOOT	91	

SCOPE NO.	SECTION	COUNTY	TOTAL SHEETS	SHEET NO.
16-00009-00-SW		EFFINGHAM	49	4

FED ROAD DIST NO. 7 ILLINOIS FED AID PROJECT

CONTRACT #5872

MILANO & GRUHLON ENGINEERS, LLC
 141 N. HANCOCK ST. | PO BOX 657
 EFFINGHAM, IL 62401
 Phone: (617) 347-7262 | (609) 677-2714
 Email: mgs@mgse.com | ggr@mgse.com
 Web: www.mgse.com
 Design Firm #164-62392

S:\2016\16340\DWG\QUANTITIES.DWG
 SAVE DATE: 4/8/2020 09:53

SUMMARY OF QUANTITIES
 DOWNTOWN ENHANCEMENT
 ITEP PHASE 5
 SECTION 16-00009-00-SW
 VILLAGE OF DIETERICH
 EFFINGHAM COUNTY, ILLINOIS

Revised 12/22/20


LOCATION	REMOVALS																	
	SCARIFY EXISTING SURFACE	RELOCATE EXISTING MAILBOX	BOLLARD REMOVAL	BOX CULVERT REMOVAL	STORM SEWER REMOVAL	INLETS TO BE ADJUSTED WITH NEW FRAME AND GRATE (SPECIAL)	FENCE REMOVAL	TREE REMOVAL (OVER 15 UNITS DIAMETER)	PAVEMENT REMOVAL	DRIVEWAY PAVEMENT REMOVAL	SIDEWALK REMOVAL	COMBINATION CURB & GUTTER REMOVAL	PIPE CULVERT REMOVAL	DOMESTIC METER VAULTS TO BE ADJUSTED	VALVE BOXES TO BE ADJUSTED	FRAMES AND LIDS TO BE ADJUSTED	REMOVING INLETS	
	SQ YD	EACH	EACH	FOOT	FOOT	EACH	FOOT	UNIT	SQ YD	SQ FT	FOOT	FOOT	FOOT	EACH	EACH	EACH	EACH	
SECTION STREET																		
RT	112+01.65 - 120+28.72							186										
	112+35.50 - 112+52.96									77								
RT	113+03.72													1				
RT	113+95.22													1				
RT	114+95.00 - 115+05.00									50								
RT	114+95.78													1				
RT	115+88.32													1				
RT	115+95.00 - 116+04.99									50								
RT	116+81.53 - 117+00.00									87								
	118+15.00 - 118+25.01									50								
RT	119+70.53 - 119+80.06									50								
RT	119+75.50																1	
	SUBTOTAL	0	0	0	0	0	0	0	186	0	364	0	0	4	0	0	1	
PINE STREET SOUTH																		
	200+10.08 - 206+13.00	1570																
RT	200+15.86 - 203+00.50										1137							
LT	200+34.31 - 201+95.46										675							
LT	201+95.46 - 202+21.82								17									
LT	202+21.82 - 206+19.59										2177							
LT	203+17.06															1		
LT	203+92.24 - 204+67.28						96											
LT	203+40.89 - 203+86.86						49											
RT	204+00.00 - 204+25.00										119							
RT	204+16.08				6												1	
	204+16.08 - 204+34.56			46														
RT	204+34.56																1	
	204+43.64																1	
RT	205+27.06 - 205+52.53										126							
RT	205+86.36 - 206+33.82										426							
RT	206+06.95							1									1	
RT	206+15.36 - 206+27.68					14												
RT	206+14.51 - 206+34.10								10			24						
	SUBTOTAL	1570	0	0	46	20	1	145	0	10	17	4660	24	0	0	0	3	2
PINE STREET NORTH																		
RT	206+63.94 - 206+77.68											15						
LT	206+67.7 - 208+37.87										668							
LT	206+71.35 - 206+77.43											6						
	206+72.71 - 210+14.92	551																
RT	206+77.02 - 208+20.24									79								
RT	206+77.72																1	
LT	207+09.18									30								
LT	207+28.62									30								
LT	207+41.48				6												1	
LT	208+51.94 - 210+06.70										592							
RT	208+59.38 - 209+11.59										42							
LT	209+35.19									30								
LT	209+71.90									30								
	SUBTOTAL	551	0	0	0	6	0	0	120	0	121	1260	21	0	0	0	0	2
CHURCH STREET																		
	495+73.64 - 499+79.52	991																
LT	495+83.41																	1
	495+83.68 - 496+08.54					37												
LT	496+05.06															1		
LT	496+28.97 - 497+80.19										585							
LT	496+36.12															1		
LT	496+34.43			3														
RT	496+68.83													1				
RT	496+84.21													1				
RT	497+18.11		1															
LT	497+71.96																1	
RT	497+79.90					32										1		
LT	497+88.44 - 499+68.63										798							
RT	498+71.04																1	
RT	498+72.39													1				
RT	498+77.79													1				
LT	498+90.77													1				
RT	499+48.09															1		
RT	499+52.28 - 499+56.87										64							
LT	499+57.08			2														
LT	499+66.92				42												1	
LT	500+14.50 - 500+19.50										90							
	SUBTOTAL	991	1	5	42	69	0	0	0	0	1,537	0	0	5	2	2	4	
PARK STREET																		
	400+30.82 - 403+83.97	740																
RT	400+32.47 - 400+23.01										57							
RT	401+21.74													1				
RT	401+28.05 - 401+43.57											15.5						
RT	402+27.00																	
RT	402+33.93 - 402+33.30											14.5						
RT	402+22.76 - 402+33.04							21										
LT	403+60.01 - 403+75.04										122						1	
	SUBTOTAL	740	0	0	0	0	21	0	0	0	179	0	30	1	0	0	0	
	Total	3852	1	5	88	95	1	166	120	196	138	8000	45	30	10	5	9	

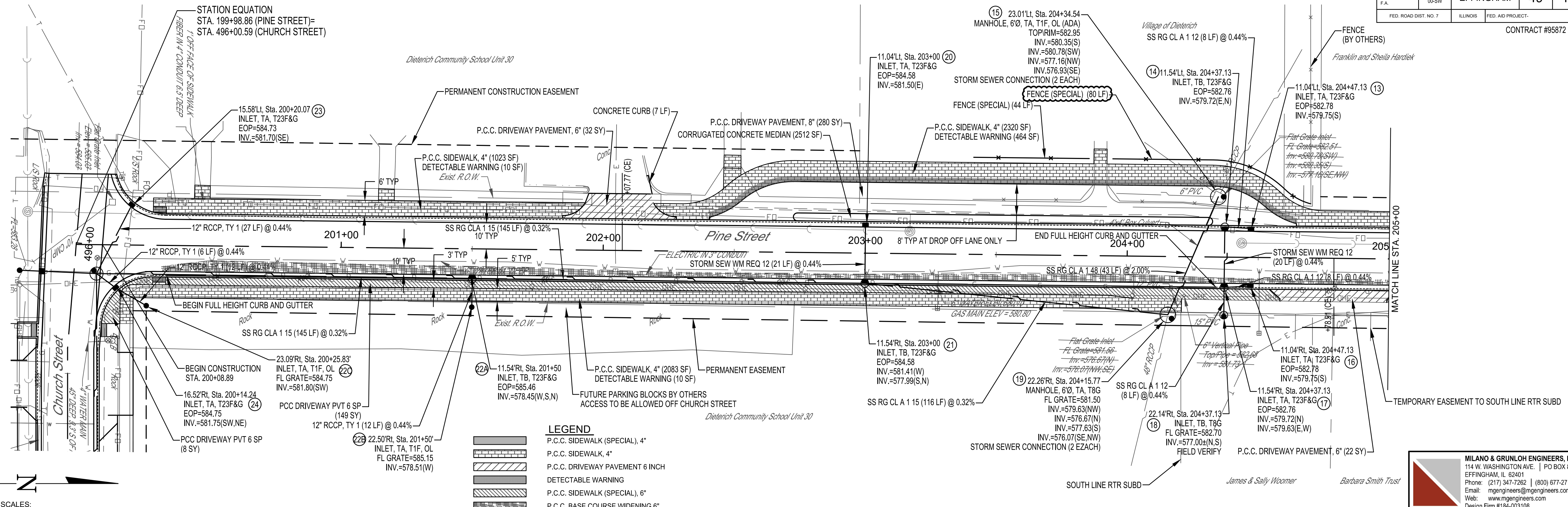
TREE SCHEDULE		
LOCATION	TREE, ACER PLATANOIDES CRIMSON KING (CRIMSON KING NORWAY MAPLE), 1-1/4" CALIPER, BALLED AND BURLAPPED	
	A2000810	
	EACH	
PINE STREET NORTH		
LT	207+09.18	1
LT	207+28.62	1
LT	209+35.19	1
LT	209+71.90	1
Total		4

FENCE SCHEDULE		
LOCATION	FENCE (SPECIAL)	
	X2200003	
	EACH	
PINE STREET NORTH		
LT	203+40.86 - 203+84.94	44
LT	203+93.44 - 204+69.94	80
Total		124

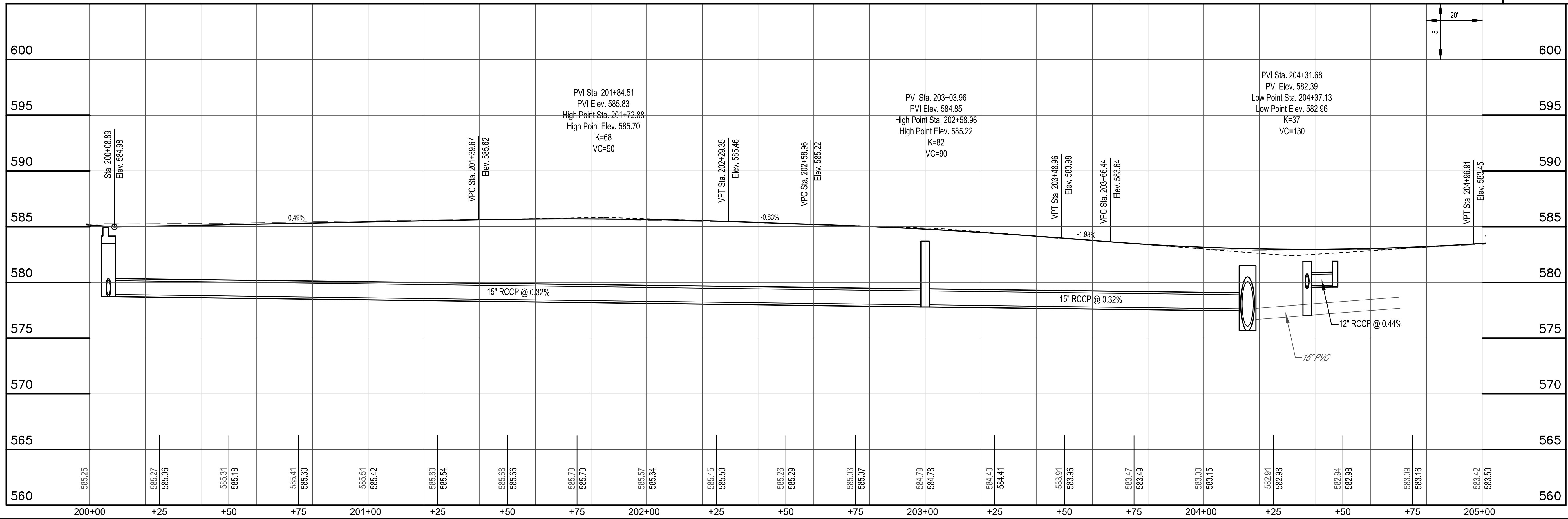
EARTHWORK SCHEDULE			
(1)	(2)	(3)	(4)
EARTH EXCAVATION (CUT ONLY)	EXCAVATION TO BE USED AS EMBANKMENT ((4)*0.75)	EMBANKMENT	EARTHWORK BALANCE WASTE (+) OR SHORTAGE(-) FURNISHED EXCAVATION
CUBIC YARD	CUBIC YARD	CUBIC YARD	CUBIC YARD
1180	890	70	820

SEE ELECTRICAL SHEETS FOR SCHEDULES ON WIRING/LIGHTING

 MILANO & GRUNLOH ENGINEERS, LLC 114 W. WASHINGTON AVE. PO BOX 897 EFFINGHAM, IL 62401 Phone: (217) 347-7262 (800) 677-2714 Email: mgen@engr.com Web: www.mgen.com Design Firm #184-003108	SCHEDULE OF QUANTITIES DOWNTOWN ENHANCMENT ITP PHASE 5 SECTION 16-00009-00-SW VILLAGE OF DIETERICH EFFINGHAM COUNTY, ILLINOIS
	S:\2016\16348\DWG\QUANTITIES.DWG SAVE DATE: 12/18/2020 14:25



SCALES:
 1" = 20' HOR
 1" = 5' VER



MILANO & GRUNLOH ENGINEERS, LLC
 114 W. WASHINGTON AVE. | PO BOX 897
 EFFINGHAM, IL 62401
 Phone: (217) 347-2262 | (800) 677-2714
 Email: mgen@milanoandgrunloh.com
 Web: www.milanoandgrunloh.com
 Design Firm #184-003108

S:\2016\16348\DWG\PINE STREET.DWG
 SAVE DATE: 12/19/2020 14:25