

F.A.I. RTE.	SECTION	COUNTY	TOTAL SHEETS	SHEET NO.
90/94	2005-0341	COOK	41	1
60A05			41	1
			42	

STATE OF ILLINOIS
DEPARTMENT OF TRANSPORTATION
DIVISION OF HIGHWAYS

**PLANS FOR PROPOSED
FEDERAL AID HIGHWAY**

F.A.I. ROUTE 90/94 (DAN RYAN EXPRESSWAY)
SECTION 2005-0341
SOUTHBOUND FENCE AND GATES
(47TH ST TO 31ST ST)
COOK COUNTY
C-91-263-05

INDEX OF SHEETS

SHEET DESCRIPTION

- 1 COVER SHEET / INDEX / HIGHWAY STANDARDS
- 2 GENERAL NOTES
- 3 SUMMARY OF QUANTITIES
- 4-8 ALIGNMENT PLANS, SURVEY TIES AND CONTROL POINTS
- 9-35 EXISTING AND PROPOSED FENCE PLANS
- 36-38A STRUCTURAL DETAILS
- 39 TC-10 DISTRICT 1, TRAFFIC CONTROL AND PROTECTION FOR SIDE ROADS, INTERSECTIONS & DRIVEWAYS
- 40 TC-17 DISTRICT 1, TRAFFIC CONTROL DETAILS FOR FREEWAY SHOULDER CLOSURES PARTIAL RAMP CLOSURES
- 41 TC-22 DISTRICT 1, ARTERIAL ROAD INFORMATION SIGN

IDOT HIGHWAY STANDARDS

STANDARD DESCRIPTION

- 000001-05 STANDARD SYMBOLS, ABBREVIATIONS, AND PATTERNS
- 001006 DECIMAL OF AN INCH AND OF A FOOT
- 664001-02 CHAIN LINK FENCE
- 701601-00 URBAN LANE CLOSURE, MULTILANE, 1W OR 2W WITH NONTRAVERSABLE MEDIAN
- 701701-00 URBAN LANE CLOSURE, MULTILANE INTERSECTION
- 701801-04 LANE CLOSURE, MULTILANE, 1W OR 2W, CROSSWALK OR SIDEWALK CLOSURE
- 701901-01 TRAFFIC CONTROL DEVICES



LOCATION OF SECTION INDICATED THUS: —

STATE OF ILLINOIS
DEPARTMENT OF TRANSPORTATION
DIVISION OF HIGHWAYS

SUBMITTED OCTOBER 23, 2008
Diana M. O'Keefe
DEPUTY DIRECTOR OF HIGHWAYS, REGION ENGINEER
December 5, 2008
Charles G. Dargatzis
ENGINEER OF DESIGN AND ENVIRONMENT
December 5, 2008
Christine M. Reed
DIRECTOR OF HIGHWAYS, CHIEF ENGINEER

**PRINTED BY THE AUTHORITY
OF THE STATE OF ILLINOIS**

BOWMAN, BARRETT & ASSOCIATES INC.
CONSULTING ENGINEERS
Chicago, Illinois
312.228.0100
www.bbainc.com

Revised 1/2/09

PROJECT LOCATED IN CITY OF CHICAGO

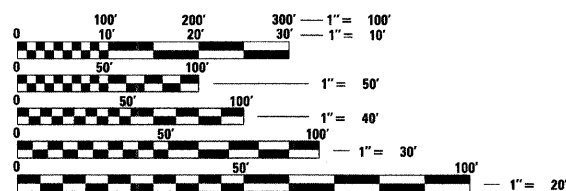
DESIGN DESIGNATION

WENTWORTH AVE: 8275 (20) URBAN COLLECTOR

FRONTAGE ROAD:	ADT (2020)	DESIGN SPEED	POSTED SPEED
WENTWORTH AVE	11,000	30	25

DESIGN NUMBER

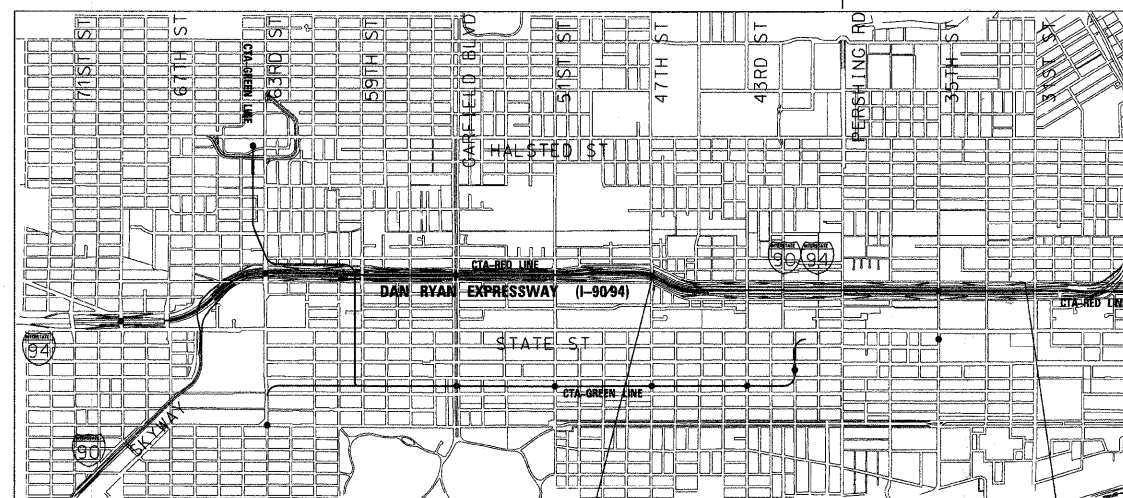
D-91-417-01



FULL SIZE PLANS HAVE BEEN PREPARED USING STANDARD ENGINEERING SCALES. REDUCED SIZED PLANS WILL NOT CONFORM TO STANDARD SCALES. IN MAKING MEASUREMENTS ON REDUCED PLANS, THE ABOVE SCALES MAY BE USED.

BEFORE EXCAVATING CALL:
CHICAGO UTILITY ALERT NETWORK
(312) 744-7000

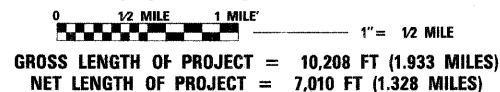
CONTRACT NO. 60A05



PROJECT BEGINS
RAMP 47A
STA 5074+06

PROJECT ENDS
SB WENTWORTH
STA 148+88

LOCATION MAP



SIGNATURE D. Smith
DATE Oct. 21, 2008
EXPIRES Nov. 30, 2009

SIGNATURE John Colwell
DATE Oct. 21, 2008
EXPIRES Nov. 30, 2009

SIGNATURE Brian L. Umbright
DATE OCT. 21, 2008
EXPIRES Nov. 30, 2010

DISTRICT ONE DESIGN/CONSULTANT SERVICES PROJECT MANAGER
RAJENDRA SHAH (847) 705-4955

N:\660\cadd\civil\11\375\SHEETS\660_37COVER.dgn