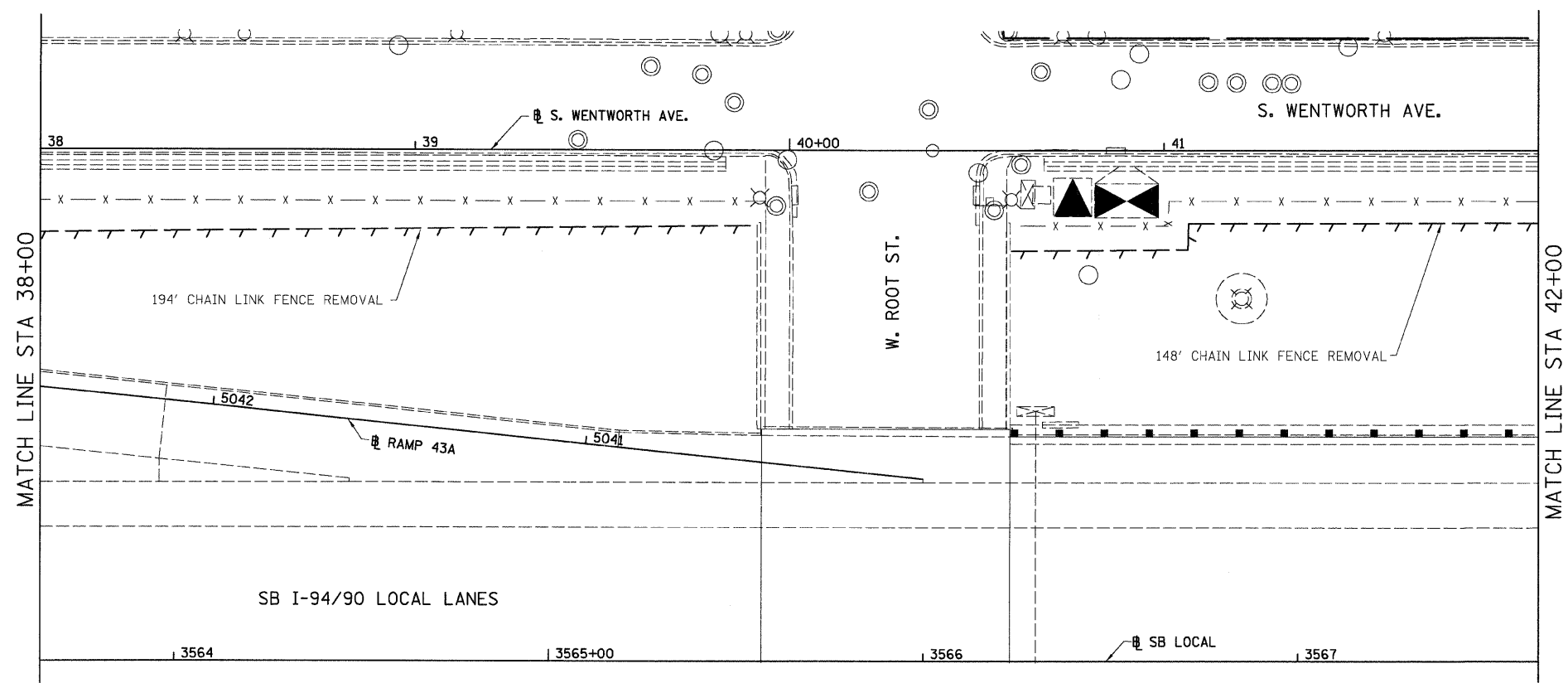


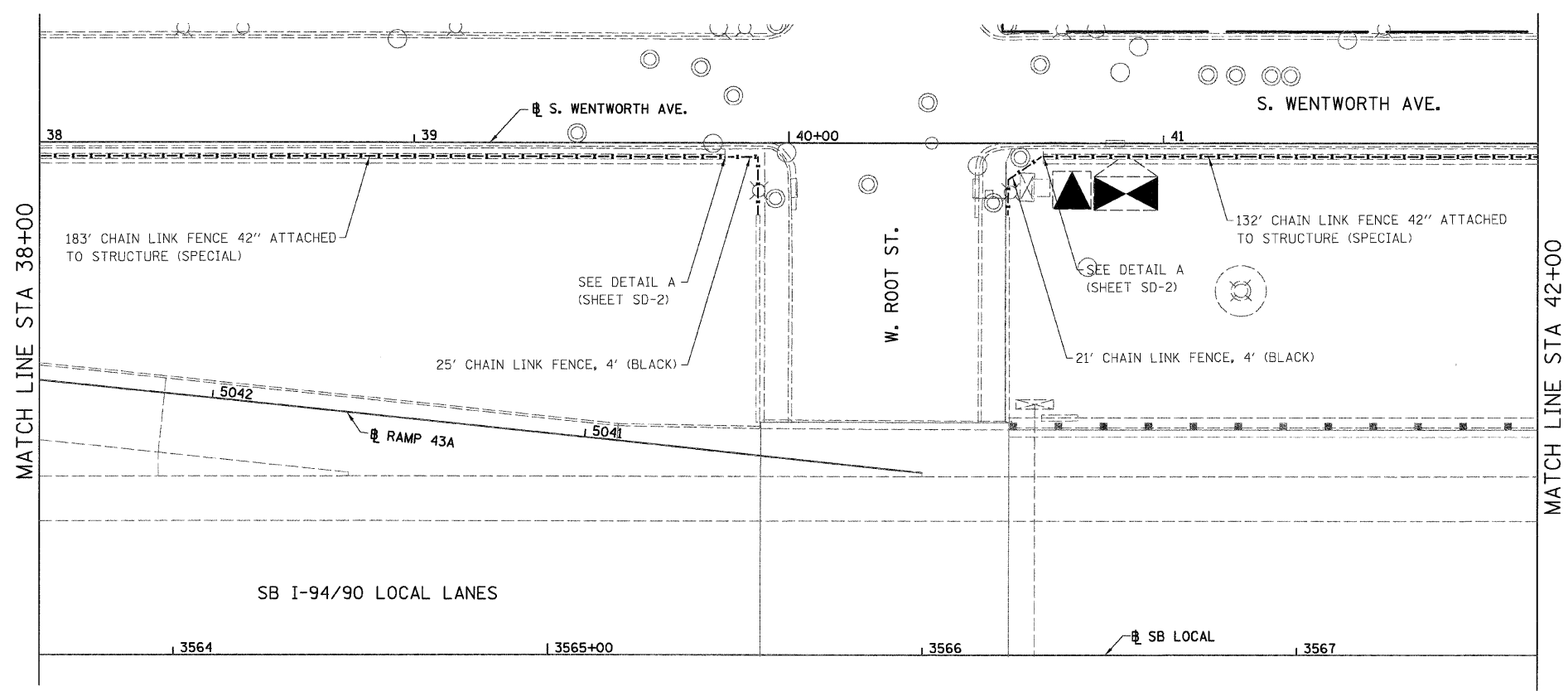
F.A.I.	SECTION	COUNTY	TOTAL SHEETS	SHEET N.O.
94/90	2005-0341	COOK	41	18
STA.	TO STA.			
FED. ROAD DIST. NO.	ILLINOIS	FED. AID PROJECT		

60A05

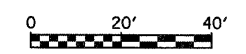


LEGEND:  
 LINEAR REMOVALS

EXISTING CONDITIONS AND REMOVAL  
 PROPOSED IMPROVEMENTS



NOTES:  
 1. SEE DETAIL FOR CHAIN LINK FENCE, 42" ATTACHED TO STRUCTURE (SPECIAL).



PL-10

REVISIONS	
NAME	DATE
REVISED	11/5/08

ILLINOIS DEPARTMENT OF TRANSPORTATION  
 F.A.I. 94/90 (DAN RYAN EXPRESSWAY)  
 SOUTHBOUND FENCE AND GATES (47TH ST TO 31ST ST)

EXISTING AND PROPOSED  
 FENCE PLANS

SCALE: 1"=20'  
 DATE: 10/23/08  
 DRAWN BY: JDC  
 CHECKED BY: DDM

BOWMAN, BARRETT & ASSOCIATES INC.  
 CONSULTING ENGINEERS  
 Chicago, Illinois  
 312.228.0100  
 www.bbandainc.com

17:52/15/2008 5:22:16 PM