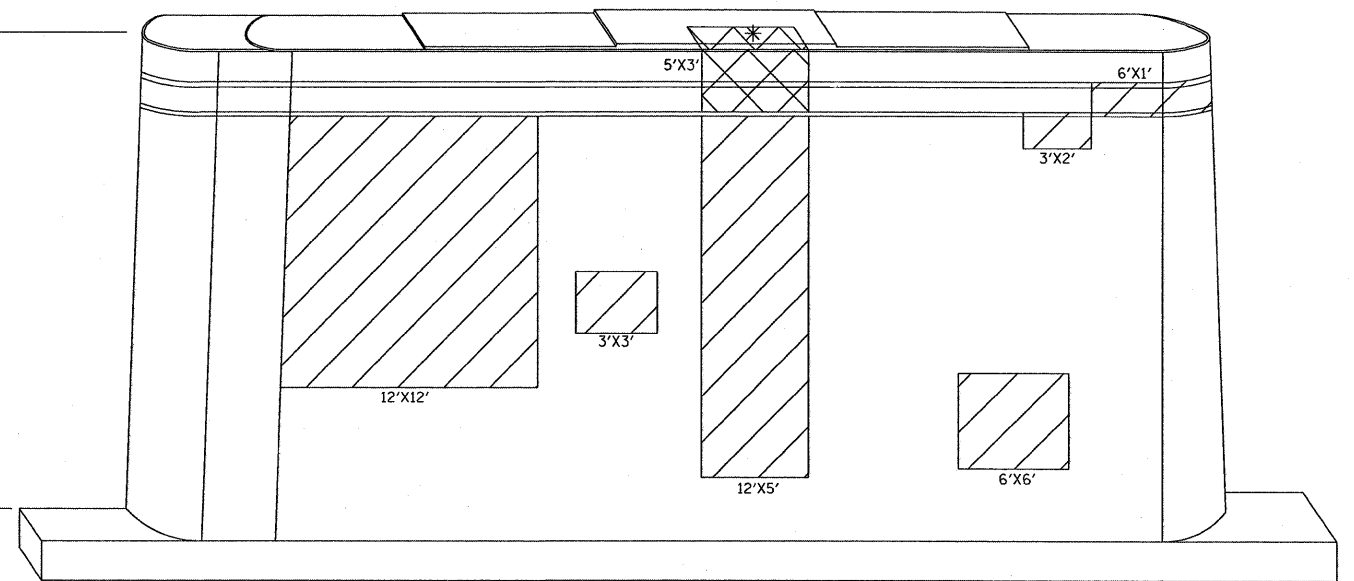
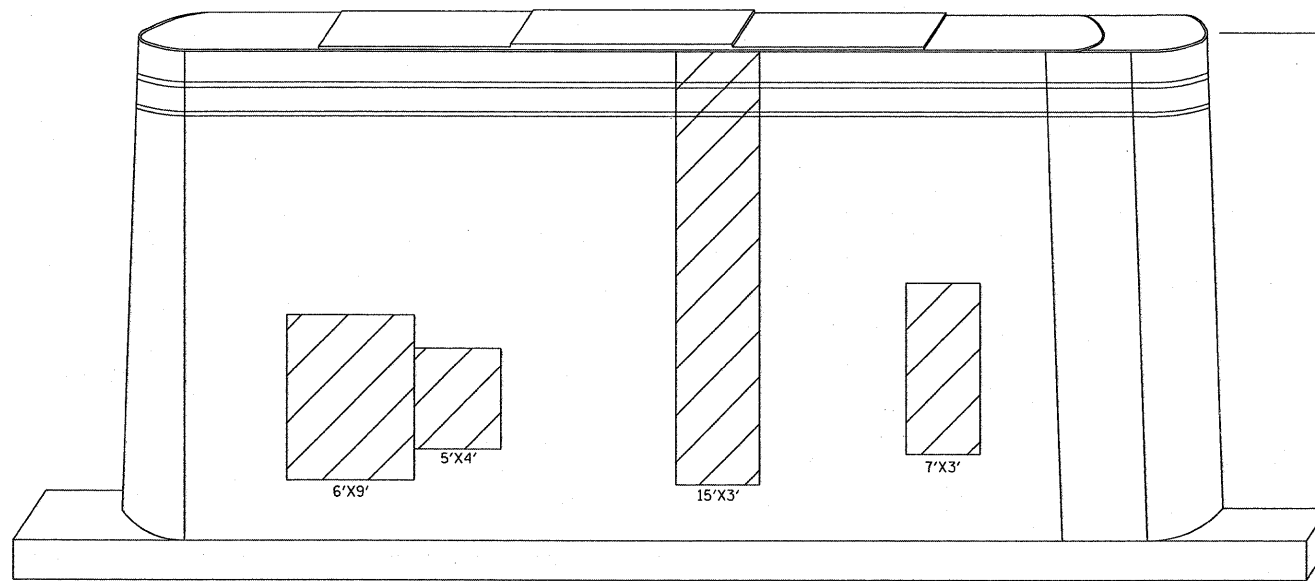


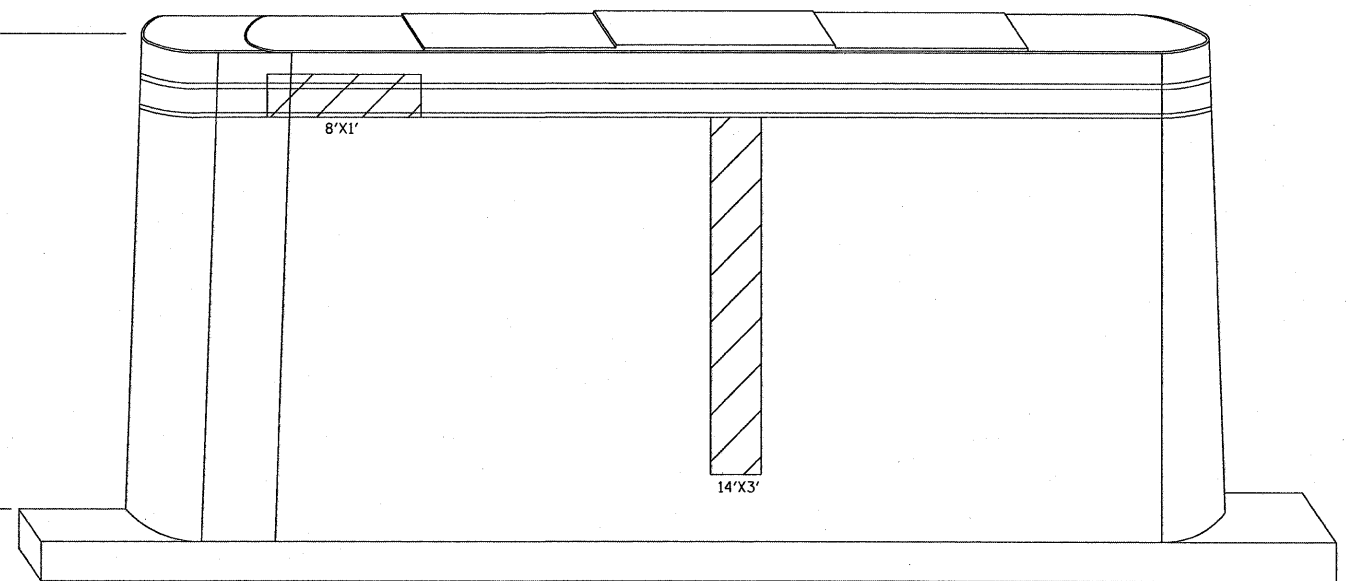
PIER 1  
WEST FACE  
LOOKING EAST



PIER 1  
EAST FACE  
LOOKING WEST



PIER 2  
WEST FACE  
LOOKING EAST



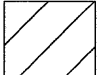
PIER 2  
EAST FACE  
LOOKING WEST


BEAM  
REACTIONS  
TABLE

D.L.	34.9 K
L.L.+IMP	45.3 K
TOTAL	80.2 K

PIER 1  
SPAN 2

PIER 1 & 2 BILL OF MATERIAL	UNIT	QUANTITY
STRUCTURAL REPAIR OF CONCRETE ≤ 5"	SQ FT	620
STRUCTURAL REPAIR OF CONCRETE > 5"	SQ FT	63
TEMPORARY SHORING AND CRIBBING	EA	1

 STRUCTURAL REPAIR OF CONCRETE ≤ 5"

 STRUCTURAL REPAIR OF CONCRETE > 5"

\* TEMPORARY SHORING AND CRIBBING

FILE NAME =  
c:\projects\dl20207\design\_00.dgn

USER NAME = mcdjje

DESIGNED -

DRAWN -

PLOT SCALE = 57.6240' / IN.

PLOT DATE = 10/30/2008

CHECKED -

DATE -

REVISED -

REVISED -

REVISED -

REVISED -

STATE OF ILLINOIS  
DEPARTMENT OF TRANSPORTATION

SN 099-0040

PIER 1 & 2 STRUTURAL REPAIR

SHEET 1 of 2

SCALE: SHEET NO. OF SHEETS STA. TO STA.

F.A.I  
RTE. 80

SECTION  
99-1-B-1-2

COUNTY  
WILL

TOTAL SHEETS  
21

SHEET NO.  
14

CONTRACT NO. 60D66

FED. ROAD DIST. NO. 1 ILLINOIS FED. AID PROJECT