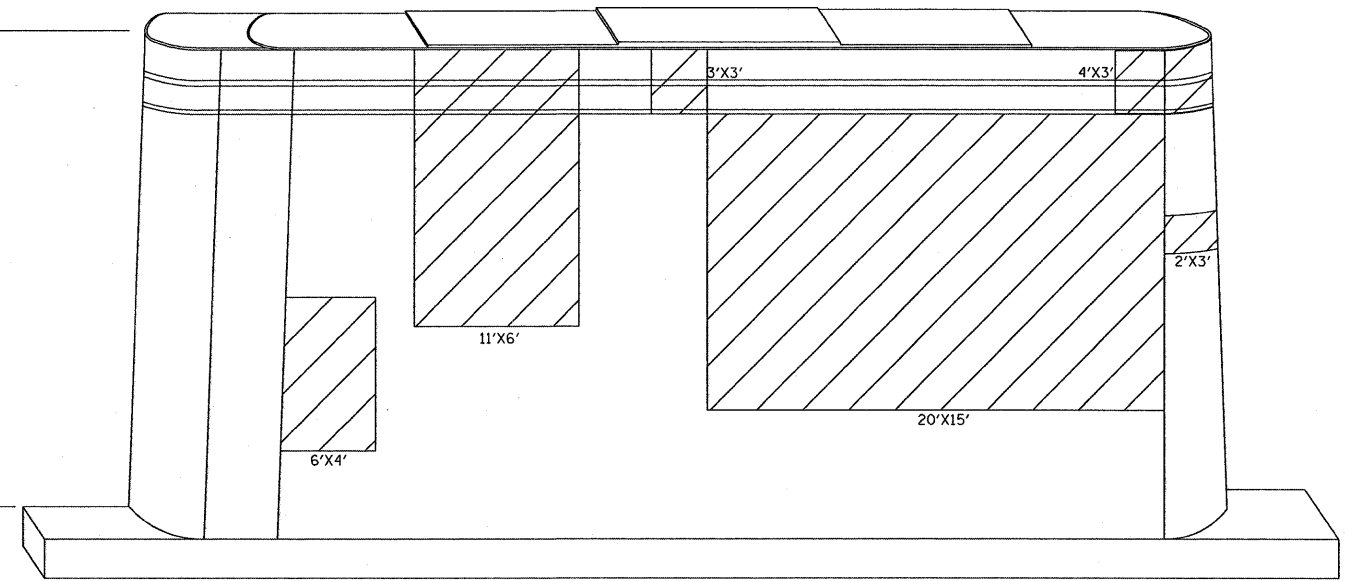
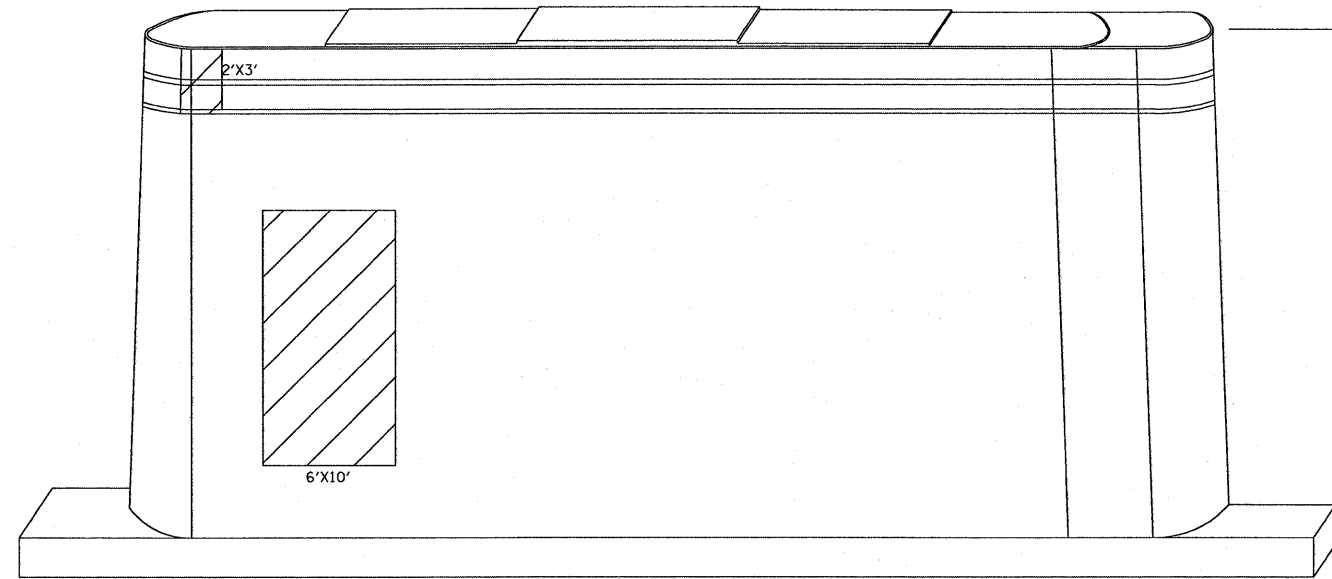


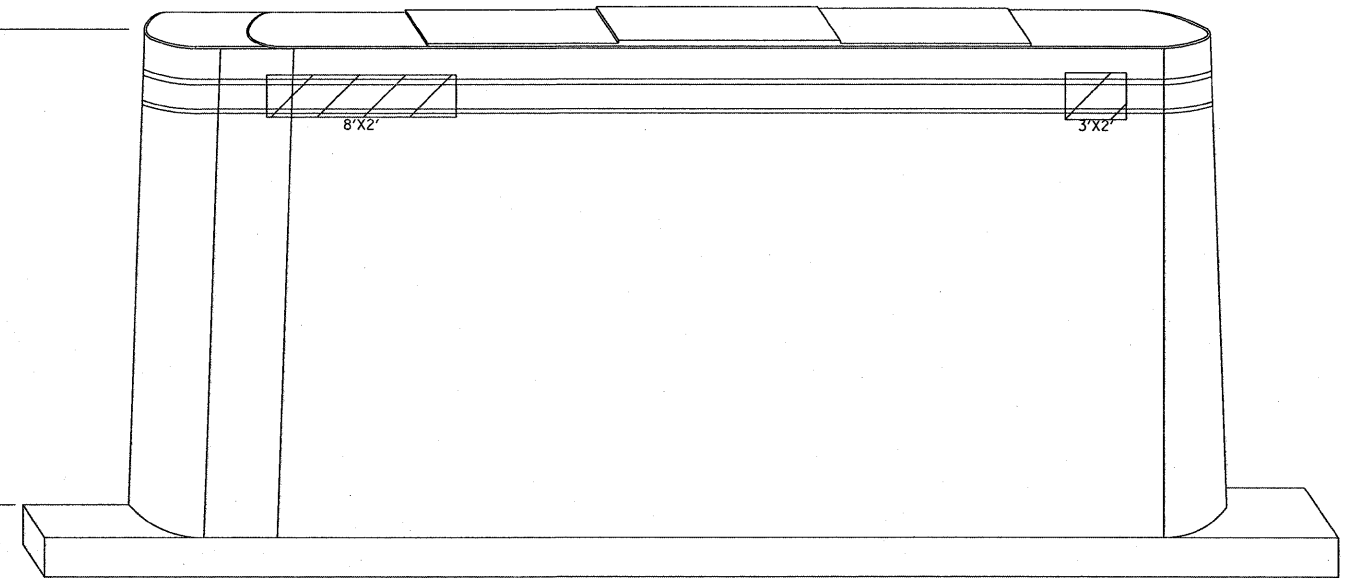
PIER 1
EAST FACE
LOOKING WEST



PIER 1
WEST FACE
LOOKING EAST

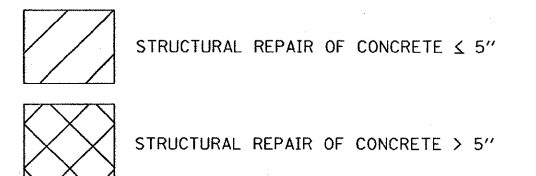


PIER 2
EAST FACE
LOOKING WEST



PIER 2
WEST FACE
LOOKING EAST

PIER 1 & 2 BILL OF MATERIAL	UNIT	QUANTITY
STRUCTURAL REPAIR OF CONCRETE \leq 5"	SQ FT	812



FILE NAME = c:\projects\d120207\design_00.dgn

USER NAME = midyjo

DESIGNED -

REVISED -

DRAWN -

REVISED -

PLOT SCALE = 57.6240' / IN.

CHECKED -

REVISED -

PLOT DATE = 10/30/2008

DATE -

REVISED -

STATE OF ILLINOIS
DEPARTMENT OF TRANSPORTATION

SN 099-0041
PIER 1 & 2 STRUCTURAL REPAIR SHEET 1 of 2

F.A.I. RTE.	SECTION	COUNTY	TOTAL SHEETS	SHEET NO.
80	99-1-B-1-2	WILL	21	16
CONTRACT NO. 60D66				
FED. ROAD DIST. NO. 1 [ILLINOIS] FED. AID PROJECT				

SCALE: SHEET NO. OF SHEETS STA. TO STA.