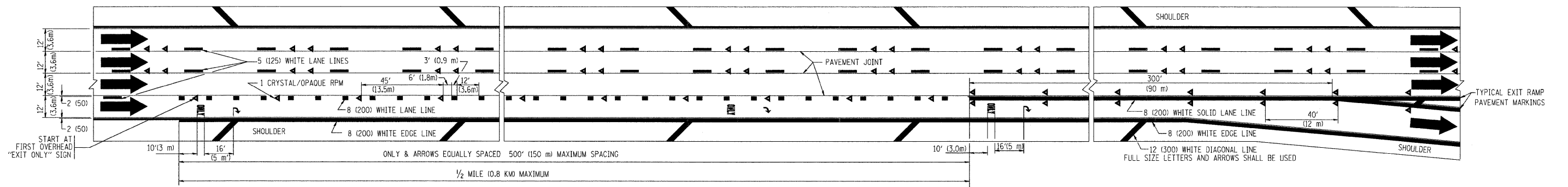
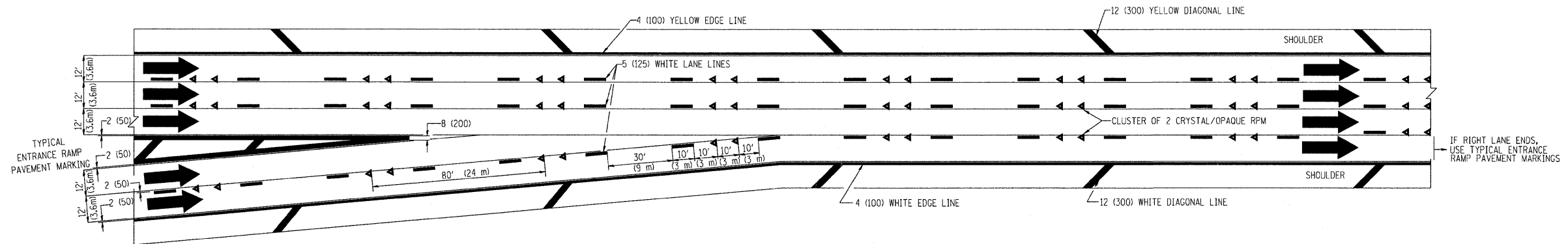


TYPICAL ENTRANCE/EXIT RAMP COMBINATION PAVEMENT MARKINGS



TYPICAL EXIT ONLY LANE PAVEMENT MARKINGS



TYPICAL TWO LANE ENTRANCE RAMP PAVEMENT MARKINGS

FILE NAME = c:\projects\dsts\22x34\12.dgn	USER NAME = bauerdl	DESIGNED - D.W.S.	REVISED - A.H. 03-96	STATE OF ILLINOIS DEPARTMENT OF TRANSPORTATION	MULTI-LANE FREEWAY PAVEMENT MARKING DETAILS			F.A.I. RTE.	SECTION	COUNTY	TOTAL SHEETS	SHEET NO.
	PLOT SCALE = 50,000' / IN.	DRAWN -	REVISED - D.W.S. 07-96					80	99-1-B-1-2	WILL	21	19
	PLOT DATE = 10/3/2008	CHECKED -	REVISED - J.A.F. 02-06					TC-12				CONTRACT NO. 60066
	DATE - 01-90	REVISED - S.P.B. 01-07		SCALE: NONE	SHEET NO. 2 OF 2 SHEETS	STA.	TO STA.	FED. ROAD DIST. NO. 1 ILLINOIS FED. AID PROJECT				