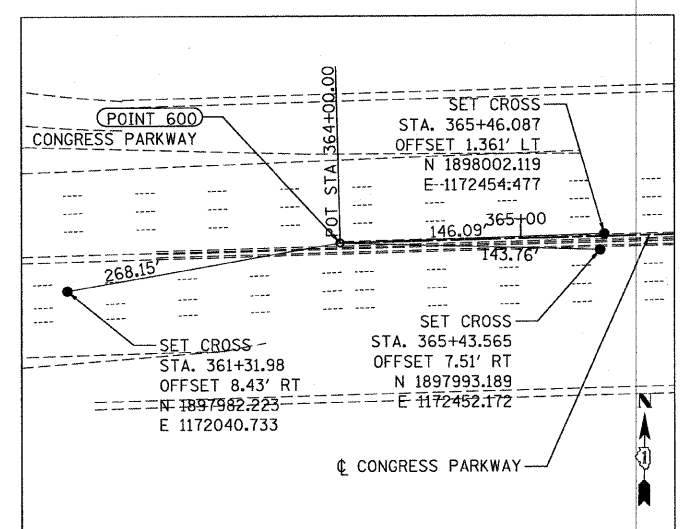


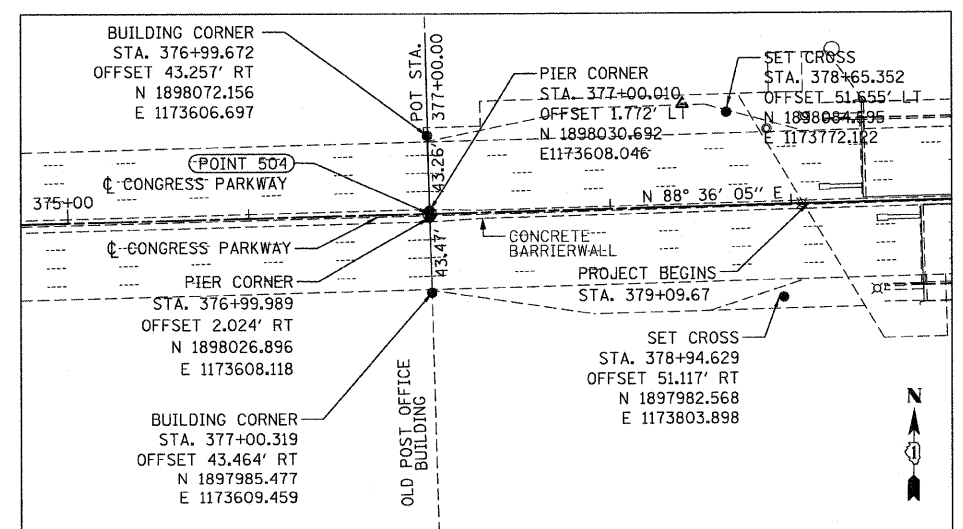
PROP. CURVE EXCCL-1  
 PI STA. = 383+13.31  
 $\Delta = 2^\circ 17' 43''$  (RT)  
 $D = 1^\circ 30' 00''$   
 $R = 3,819.72'$   
 $T = 76.52'$   
 $L = 153.01'$   
 $E = 0.77'$   
 P.C. STA. = 382+36.80  
 P.T. STA. = 383+89.81

CONGRESS PARKWAY CENTERLINE TIES				
600	POT	STA. 364+00.00	N 1897997.193	E 1172308.467
504	POT	STA. 377+00.00	N 1898028.920	E 1173608.080
602	POT	STA. 383+50.00	N 1898043.107	E 1174257.910

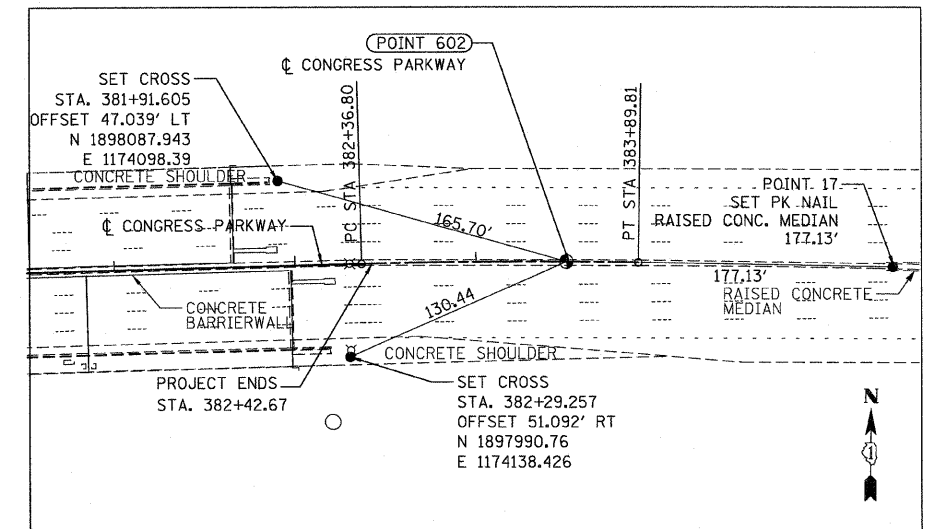
- BENCHMARK DESCRIPTIONS**
- BENCHMARK 1 BRASS DISK SET IN SIDEWALK ON THE SOUTHERLY SIDE OF HARRISON STREET EAST OF FRANKLIN STREET. ELEV. 17.655
  - BENCHMARK 3 BRASS DISK SET IN SIDEWALK NEAR THE NE CORNER OF WELLS STREET AND HARRISON STREET. ELEV. 14.214
  - BENCHMARK 2259 "X" CUT ON TOP OF STONE BASE UNDER SOUTH SIDE OF OF WINDOW ON EAST SIDE OF 2-STORY BRICK BUILDING AT THE NW CORNER OF CLINTON STREET AND POLK STREET. ELEV. 15.173



POINT 600



POINT 504



POINT 602



USER NAME = ptaid	DESIGNED - MMS	REVISED -
FILE NAME = D168E11-sht-ATB.dgn	DRAWN - DCP	REVISED -
PLOT SCALE = 1" = 50'	CHECKED - DVS	REVISED -
PLOT DATE = 10/15/2008	DATE - 10/15/08	REVISED -

STATE OF ILLINOIS  
 DEPARTMENT OF TRANSPORTATION

ALIGNMENT AND BENCHMARKS

SCALE: 1" = 50' SHEET NO. 5 OF 7a SHEETS STA. 379+09.67 TO STA. 382+42.67

F.A.P. RTE.	SECTION	COUNTY	TOTAL SHEETS	SHEET NO.
389	2424.2 B-1	COOK	23	5
CONTRACT NO. 60E11				
FED. ROAD DIST. NO. 1 ILLINOIS FED. AID PROJECT				