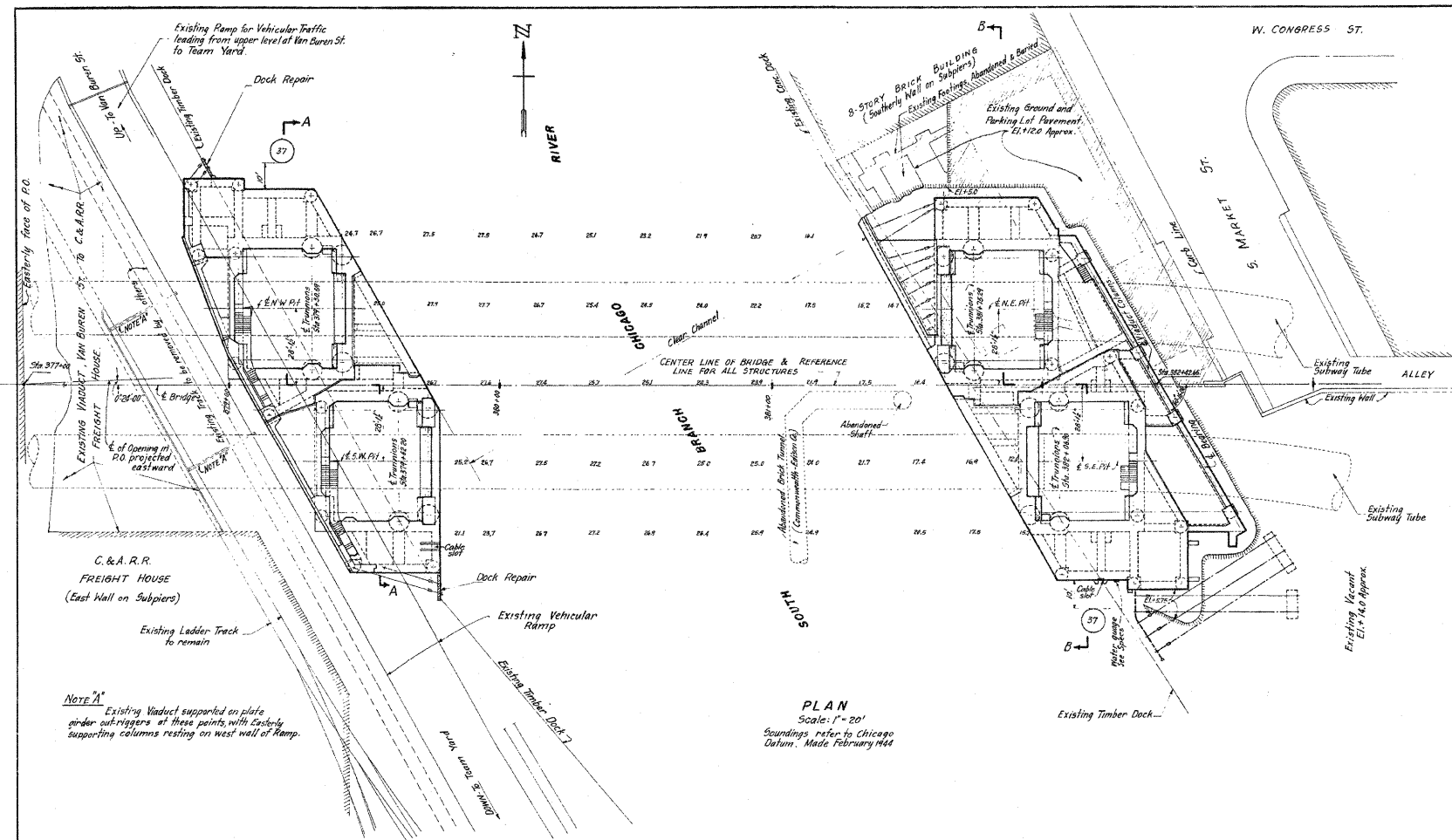


STATE OF ILLINOIS  
DEPARTMENT OF TRANSPORTATION

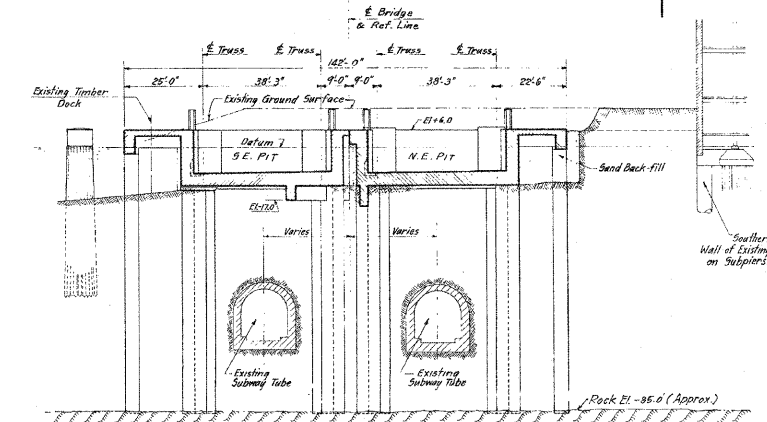
|                       |            |        |                   |           |              |
|-----------------------|------------|--------|-------------------|-----------|--------------|
| ROUTE NO.             | SECTION    | COUNTY | SUBDIVISION       | SHEET NO. | SHEET NO. 14 |
| F.A.P. 389            | 2424.2 B-1 | COOK   | 23                | 21        | 16 SHEETS    |
| FED. ROAD DIST. NO. 7 | ILLINOIS   |        | FED. AID PROJECT- |           |              |

Contract No. 60E11

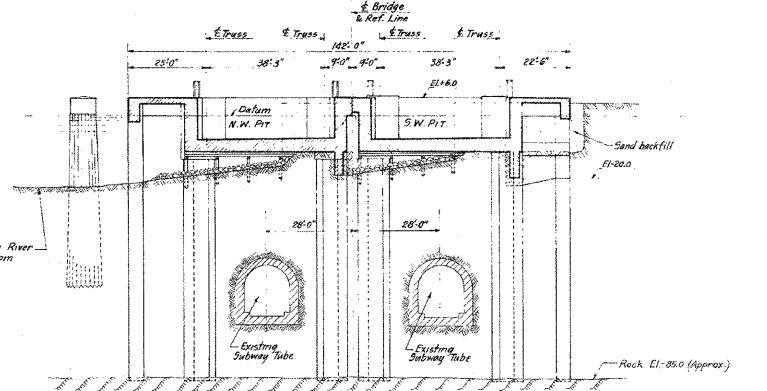


PLAN  
Scale: 1" = 20'  
Soundings refer to Chicago Datum. Made February 1944

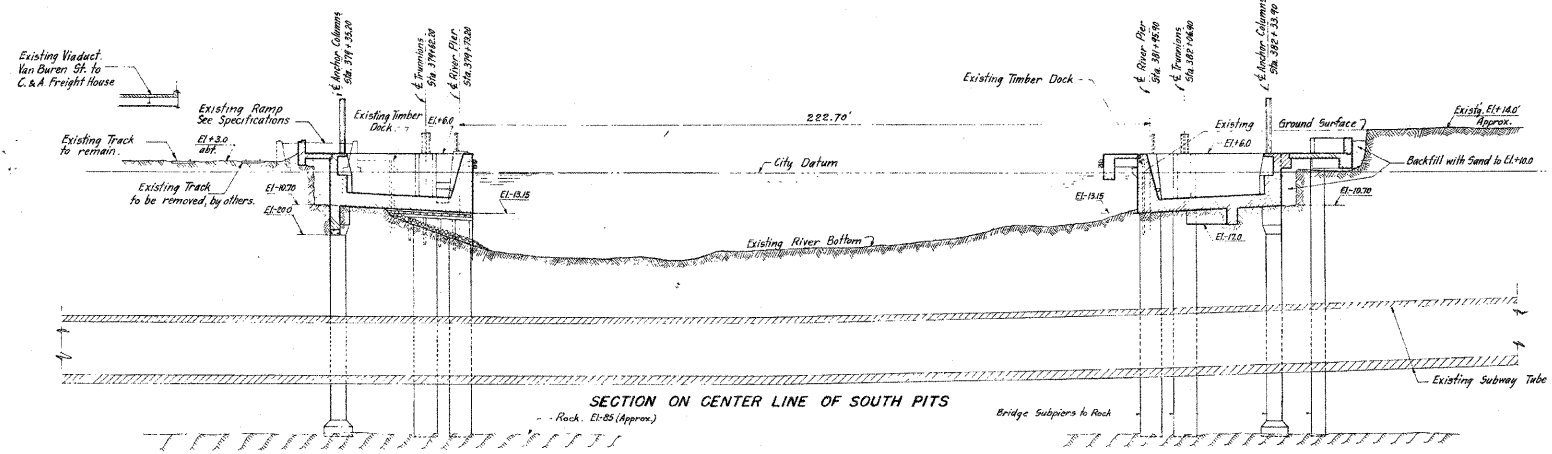
NOTE A  
Existing Viaduct supported on plate girder outriggers at these points, with cast-iron supporting columns resting on west wall of Ramp.



SECTION B-B  
Scale: 1" = 20'



SECTION A-A



SECTION ON CENTER LINE OF SOUTH PITS  
Rock El. - 85 (Approx)



HEREBY CERTIFY THAT THESE PLANS WERE PREPARED UNDER MY SUPERVISION AND THAT THEY COMPLY TO THE BEST OF MY KNOWLEDGE AND BELIEF WITH THE STANDARD REQUIREMENTS OF THE ORDINANCES OF THE CITY OF CHICAGO.

Approved: *Stephen J. Weisbach*  
Professional Engineer - District Engineer

Approved: *[Signature]*  
City Engineer

Sheets 1 to 29 of this Contract hereby are approved.

CITY OF CHICAGO  
DEPARTMENT OF PUBLIC WORKS  
BUREAU OF ENGINEERING  
DIVISION OF BRIDGES AND VIADUCTS

Four-leaf Trunnion Bascule Bridge  
**WEST CONGRESS STREET**  
OVER THE  
SOUTH BRANCH—CHICAGO RIVER  
SUBSTRUCTURE  
GENERAL PLAN

Scale: 1" = 20' June, 1948  
Drawn by M.D.K. - B.E.  
Checked by J. J. [Signature]  
In Charge of [Signature]

DRWG. 16918  
FILE No. L-107-1

1 OF 29

162445C020 117 D Per 201

FOR INFORMATION ONLY

G:\18943\Aldohin\Cadd\Refinal\162445-60E-1-014-EX2.dgn  
15-OCT-2008 12:28