
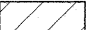

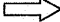




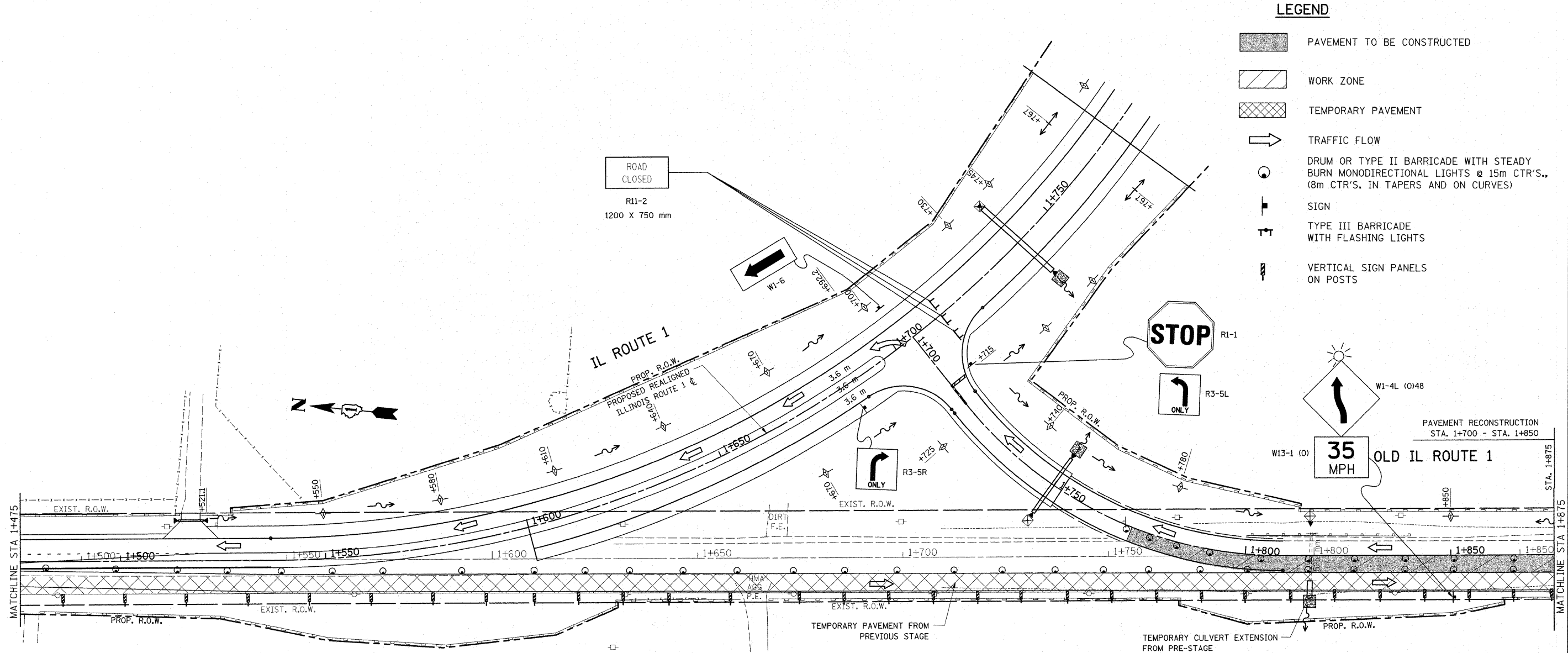


F.A.P. RTE.	SECTION	COUNTY	TOTAL SHEETS	SHEET NO.
876	9Y-RS-7	WILL	100	26
STA. 1+475		TO STA. 1+875		
FED. ROAD DIST. NO. 1		ILLINOIS FED. AID PROJECT		
CONTRACT NO. 60E52				

LEGEND

-  PAVEMENT TO BE CONSTRUCTED
-  WORK ZONE
-  TEMPORARY PAVEMENT
-  TRAFFIC FLOW
-  DRUM OR TYPE II BARRICADE WITH STEADY BURN MONODIRECTIONAL LIGHTS @ 15m CTR'S., (8m CTR'S. IN TAPERS AND ON CURVES)
-  SIGN
-  TYPE III BARRICADE WITH FLASHING LIGHTS
-  VERTICAL SIGN PANELS ON POSTS



REVISIONS	
NAME	DATE

ILLINOIS DEPARTMENT OF TRANSPORTATION
SUGGESTED MAINTENANCE OF TRAFFIC
IL. 1
STAGE II

SCALE 1:500
 DATE 1/2/2009

DRAWN BY
 CHECKED BY

Rev. Sheet 1-6-09