

FOR INDEX OF SHEETS, SEE SHEET NO 2

ROUTE	SECTION	COUNTY	TOTAL SHEETS	SHEET NUMBER
FAI 290	2008-045 I	COOK & DUPAGE	10	1

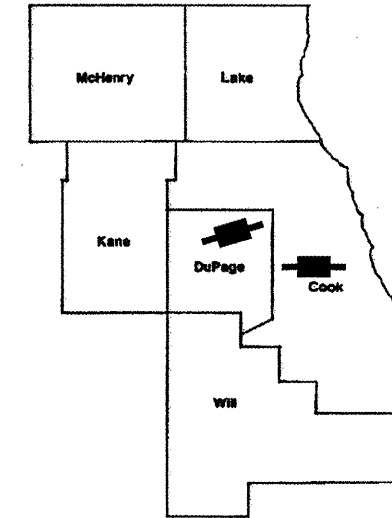
IMPROVEMENTS ARE LOCATED IN THE VILLAGE OF BERKLEY AND ADDISON TOWNSHIP

CONTRACT 60E91

D-91-537-08

STATE OF ILLINOIS
DEPARTMENT OF TRANSPORTATION
DIVISION OF HIGHWAYS
DISTRICT ONE
PROPOSED HIGHWAY PLANS

FAI ROUTE 290 : I - 290
LOCATION 1 : AT NORDIC RD (SN 022-0106)
LOCATION 2 : AT ST CHARLES RD (SN 016-1136)
SECTION: 2008 - 045 I
BRIDGE SLOPEWALL REPAIR
COOK & DUPAGE COUNTIES
C-91-537-08



LOCATION OF IMPROVEMENT INDICATED THUS:

TRAFFIC ADT

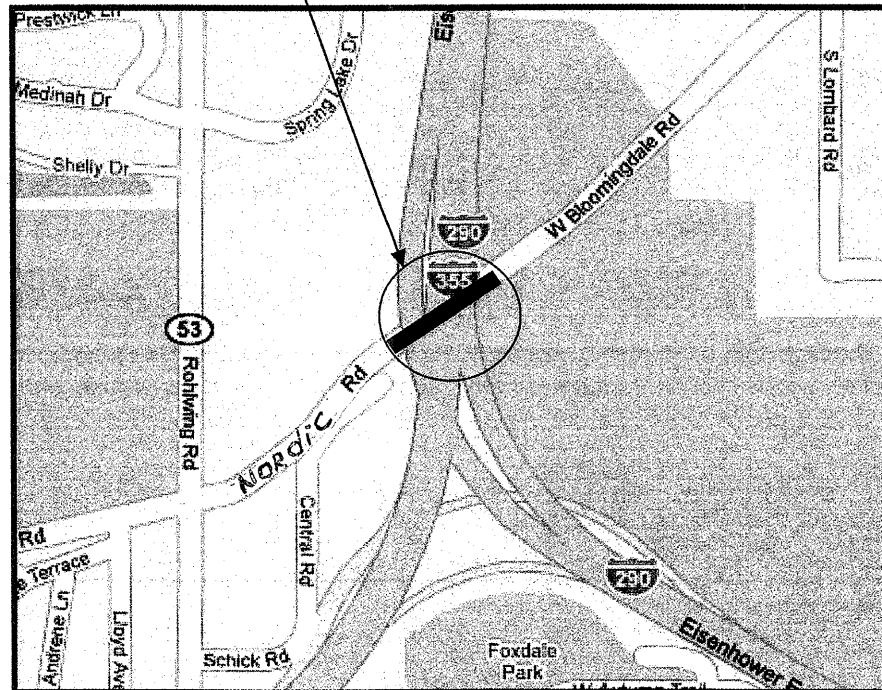
I - 290
2006 ADT = 212,100
POSTED SPEED LIMIT = 55 MPH

NORDIC ROAD
2001 ADT = 12,200
POSTED SPEED LIMIT = 35 MPH

ST CHARLES ROAD
2006 ADT = 12,300
POSTED SPEED LIMIT = 30 MPH

LOCATION 1 (SN 022-0106)

R 11 E



ADDISON TOWNSHIP
DUPAGE COUNTY

CONTRACT 60E91

LOCATION 2 (SN 016-1136)

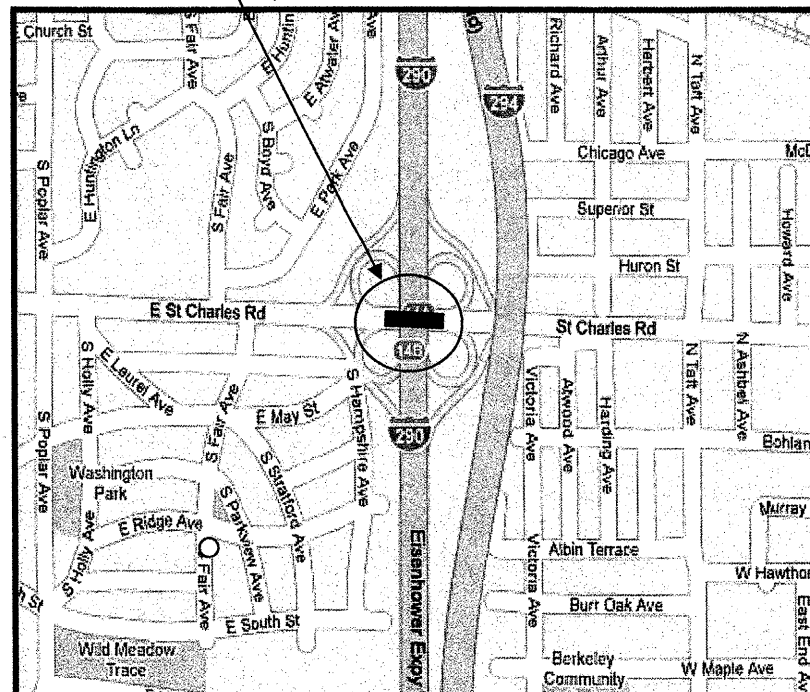
DUPAGE COUNTY

R 11 E

R 12 E COOK COUNTY



T 39 N



PROVISO TOWNSHIP
COOK & DUPAGE COUNTIES

STATE OF ILLINOIS
DEPARTMENT OF TRANSPORTATION
DIVISION OF HIGHWAYS
SUBMITTED: OCTOBER 31, 2008
Diana M. O'Keefe
DEPUTY DIRECTOR OF HIGHWAYS, REGION ENGINEER
December 5, 2008
Eric E. Harm
Interim ENGINEER OF DESIGN AND ENVIRONMENT
December 5, 2008
Christine M. Reed
DIRECTOR, DIVISION OF HIGHWAYS

**PRINTED BY THE AUTHORITY
OF THE STATE OF ILLINOIS**

J.U.L.I.E. JOINT UTILITY LOCATION
INFORMATION FOR EXCAVATION
(800) 892 - 0123 OR 811

PROJECT ENGINEER: ROBERT BORO (847) 705-4178
PROJECT MANAGER: KEN ENG

ROUTE	SECTION	COUNTY	TOTAL SHEETS	SHEET NUMBER
FAI 290	2008-045 I	COOK & DUPAGE	10	2

CONTRACT 60E91

LIST OF STATE STANDARDS

INDEX OF SHEETS

<u>STANDARD NO</u>	<u>DESCRIPTION</u>	<u>SHEET NO</u>	<u>DESCRIPTION</u>
606001 - 04	CONCRETE CURB TYPE B AND COMBINATION CONCRETE CURB AND GUTTER	1	COVER SHEET
701001 - 02	OFF ROAD OPERATIONS, 2L, 2W, MORE THAN 15' AWAY	2	INDEX OF SHEETS, STATE STANDARDS
701101 - 02	OFF ROAD OPERATIONS, MULTILANE, 15' TO 24" FROM PAVEMENT EDGE	3	GENERAL NOTES
701301 - 03	LANE CLOSURE, 2L, 2W (SHORT TIME OPERATIONS)	4	SUMMARY OF QUANTITIES
701400 - 03	APPROACH TO LANE CLOSURE, FREEWAY / EXPRESSWAY	5-8	PLAN SHEETS
701401 - 05	LANE CLOSURE, FREEWAY / EXPRESSWAY	9	TRAFFIC CONTROL DETAILS FOR FREEWAY SHOULDER CLOSURES AND PARTIAL RAMP CLOSURES(TC-17)
701426 - 03	LANE CLOSURE, MULTILANE, INTERMITTENT OR MOVING OPER., FOR SPEEDS > 45 MPH	10	FREEWAY ENTRANCE AND EXIT RAMP CLOSURE DETAILS (TC-8)
701501 - 05	URBAN LANE CLOSURE, 2L, 2W, UNDIVIDED		
701601 - 00	URBAN LANE CLOSURE, MULTILANE, 1W OR 2W WITH NONTRAVERSABLE MEDIAN		
701901 - 01	TRAFFIC CONTROL DEVICES		

ILLINOIS DEPARTMENT OF
TRANSPORTATION

I 290 @ NORDIC & ST CHARLES RDS

II INDEX OF SHEETS, STATE STANDARDS

ROUTE	SECTION	COUNTY	TOTAL SHEETS	SHEET NUMBER
FAI 290	2008-045 I	COOK & DUPAGE	10	3

CONTRACT 60E91

GENERAL NOTES

BEFORE STARTING ANY EXCAVATION, THE CONTRACTOR SHALL CALL "JULIE." AT (800)892-0123 OR 811 FOR FIELD LOCATIONS OF BURIED ELECTRIC, TELEPHONE AND GAS UTILITIES. (48 HOUR NOTIFICATION IS REQUIRED).

THE CONTRACTOR SHALL COORDINATE CONSTRUCTION ACTIVITIES WITH UTILITY COMPANIES AND THE VILLAGE OF BERKLEY.

THE CONTRACTOR WILL NOT BE ALLOWED TO SET UP A YARD OR FIELD OFFICE ON STATE PROPERTY WITHOUT WRITTEN PERMISSION FROM THE DEPARTMENT.

WHEN ARTIFICIAL LIGHTING IS UTILIZED IN NIGHT OPERATIONS, THE CONTRACTOR SHALL EXERCISE THE UTMOST PRECAUTIONS IN PREVENTING ADVERSE VISIBILITY TO THE MOTORING PUBLIC AND ADJOINING RESIDENTIAL AREAS.

PLAN DIMENSIONS AND DETAILS RELATIVE TO EXISTING PLANS ARE SUBJECT TO ROUTINE VARIATIONS. THE CONTRACTOR SHALL FIELD VERIFY EXISTING DIMENSIONS AND DETAILS AFFECTING NEW CONSTRUCTION AND MAKE NECESSARY APPROVED ADJUSTMENTS PRIOR TO CONSTRUCTION OR ORDERING OF MATERIALS. SUCH VARIATIONS SHALL NOT BE CAUSE FOR ADDITIONAL COMPENSATION FOR A CHANGE IN SCOPE OF THE WORK, HOWEVER, THE CONTRACTOR WILL BE PAID FOR THE QUANTITY ACTUALLY FURNISHED BASED UPON THE UNIT PRICE BID FOR THE WORK.

THE CONTRACTOR SHALL CONTACT THE DISTRICT ONE TRAFFIC CONTROL SUPERVISOR AT (847) 705 - 4470 FOR ARTERIALS AND (847) 705 - 4151 FOR EXPRESSWAYS A MINIMUM OF 72 HOURS IN ADVANCE OF BEGINNING WORK.

THESE PLANS HAVE BEEN PREPARED FROM NOTES RECEIVED FROM THE BUREAU OF MAINTENANCE BRIDGE INSPECTORS.

DO NOT SCALE PLANS FOR CONSTRUCTION DIMENSIONS.

USE # 8 EPOXY-COATED TIE BARS, CONFORMING TO ART. 1006.10 OF THE STANDARD SPECIFICATIONS, FOR ALL TIE BARS. USE THE "LONGITUDINAL CONSTRUCTION JOINT (TIE BAR GROUTED IN PLACE)" DETAIL SHOWN ON HIGHWAY STANDARD 606001 FOR ALL LONGITUDINAL JOINTS AND FOR TYING PCC PAVEMENT WIDENING TO EXISTING CONCRETE PAVEMENT AS SHOWN ON THE PLANS.

THE "ADVANCED WARNING SIGN DETAIL FOR ARTERIAL TRAFFIC" LOCATED IN THE SPECIAL PROVISION FOR "TEMPORARY INFORMATION SIGNING FOR LANE CLOSURES" IS APPLICABLE ONLY TO ARTERIAL ROADS AND SHALL NOT BE APPLIED TO EXPRESSWAYS.

SLOPE WALL SHALL BE REINFORCED WITH WELDED WIRE FABRIC, 6 in x 6 in W4.0 X W4.0, WEIGHING 58 lbs PER 100 sq. ft. COST OF THE MESH IS INCLUDED IN THE COST OF THE SLOPEWALL.

ILLINOIS DEPARTMENT OF
TRANSPORTATION

I 290 @ NORDIC & ST CHARLES RDS

GENERAL NOTES

ROUTE	SECTION	COUNTY	TOTAL SHEETS	SHEET NUMBER
FAI 290	2008-045 I	COOK & DUPAGE	10	4

SUMMARY OF QUANTITIES

CONSTRUCTION TYPE CODE

SFTY-2A

100% STATE

CODE NO	ITEM	UNIT	TOTAL QUANTITIES	LOCATION 1 DUPAGE COUNTY SN 022 - 0106	LOCATION 2 COOK COUNTY SN 016 - 1136
20700220	POROUS GRANULAR EMBANKMENT	CU YD	306	192	114
28000300	TEMPORARY DITCH CHECKS	EACH	5	2	3
28100705	STONE DUMPED RIPRAP, CLASS A3	SQ YD	35	35	-
28200200	FILTER FABRIC	SQ YD	85	85	-
42001300	PROTECTIVE COAT	SQ YD	1	1	-
50104650	SLOPE WALL REMOVAL	SQ YD	538	336	202
50300225	CONCRETE STRUCTURES	CU YD	2.0	2.0	-
51100100	SLOPE WALL 4 INCH	SQ YD	538	336	202
60600605	CONCRETE CURB, TYPE B	FOOT	10.0	10.0	-
67000400	ENGINEER'S FIELD OFFICE, TYPE A	CAL MO	3	2	1
67100100	MOBILIZATION	L SUM	1	0.6	0.4
70102620	TRAFFIC CONTROL AND PROTECTION, STANDARD 701501	L SUM	1	1	-
70102630	TRAFFIC CONTROL AND PROTECTION, STANDARD 701601	L SUM	1	-	1
X0322467	TEMPORARY INFORMATION SIGNING FOR LANE CLOSURE	SQ FT	96	48	48
X7011015	TRAFFIC CONTROL ^{AND} PROTECTION (EXPRESSWAYS)	L SUM	1	0.5	0.5
Z0075325	TIE BARS 1"	EACH	9	9	-

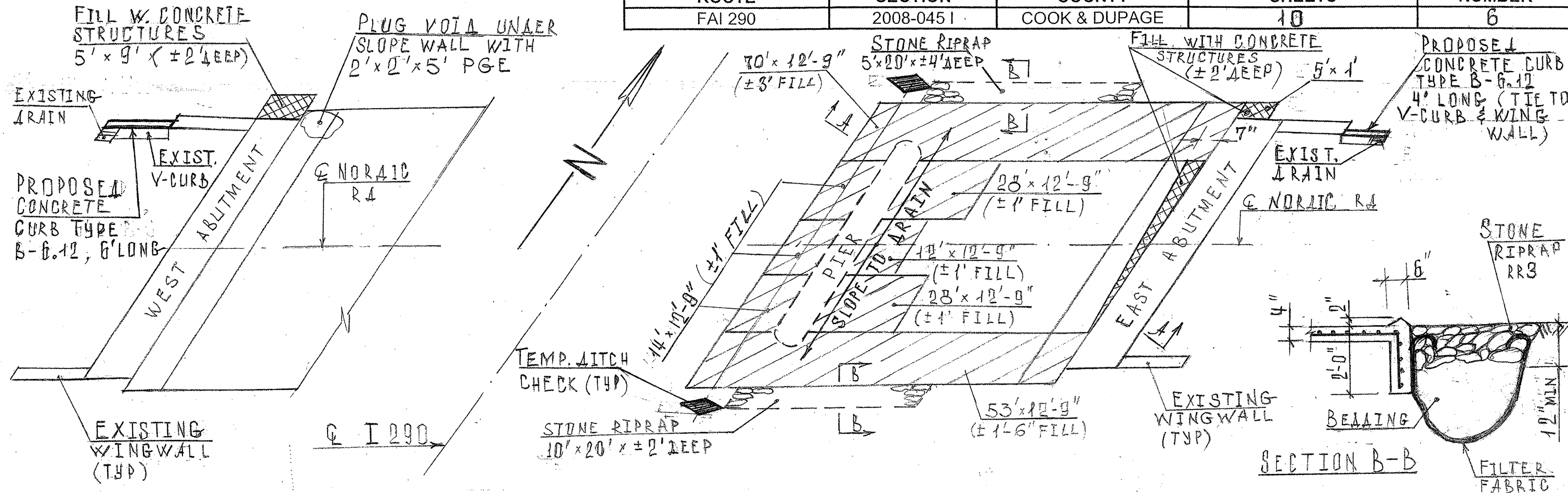
ILLINOIS DEPARTMENT OF
TRANSPORTATION

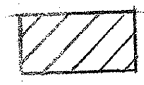

I 290 @ NORDIC & ST CHARLES RDS

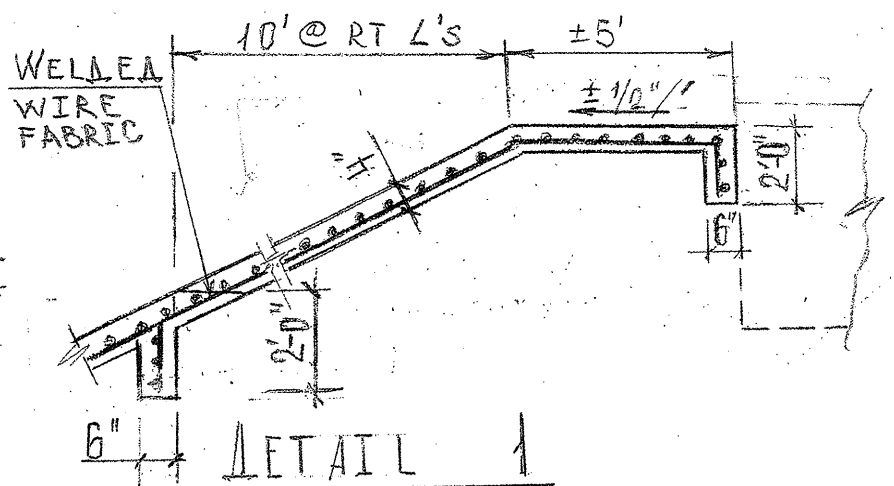
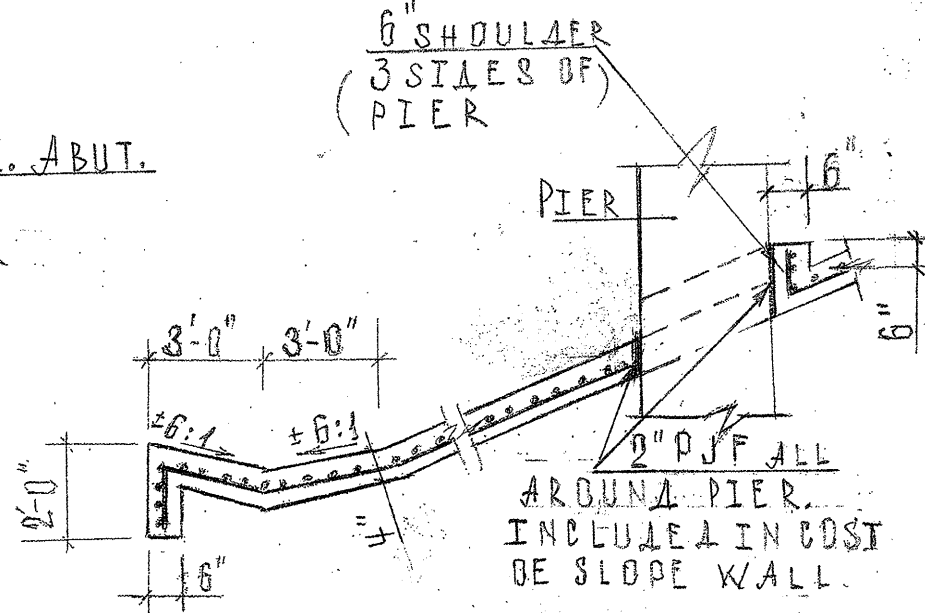
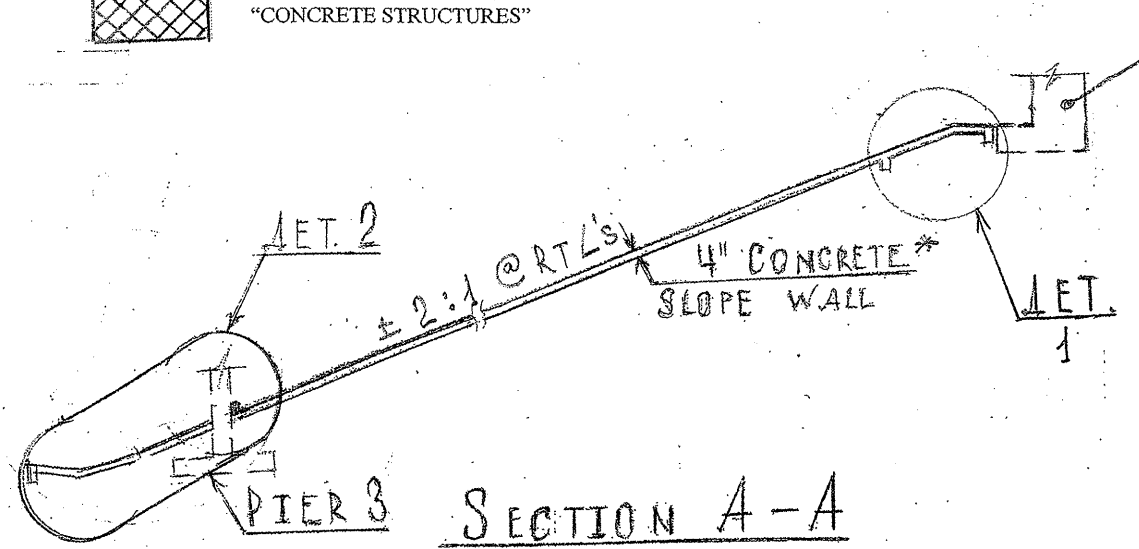
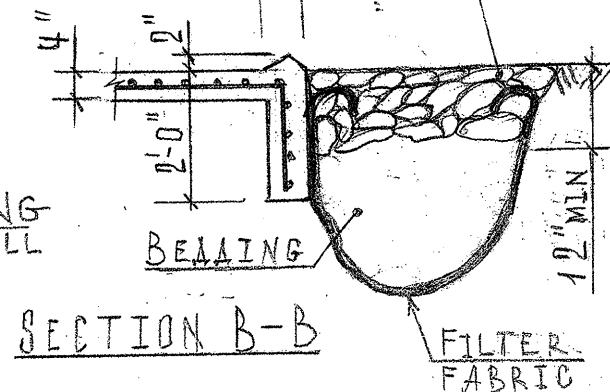
SUMMARY OF QUANTITIES

CONTRACT 60E91

ROUTE	SECTION	COUNTY	TOTAL SHEETS	SHEET NUMBER
FAI 290	2008-0451	COOK & DUPAGE	10	6



 HATCHED AREAS INDICATE "SLOPE WALL REMOVAL" "SLOPEWALL 4inch " & " POROUS GRANULAR EMBANKMENT" FILL OF APPROXIMATE DEPTH SPECIFIED.
 CROSS HATCHED AREAS INDICATE "CONCRETE STRUCTURES"



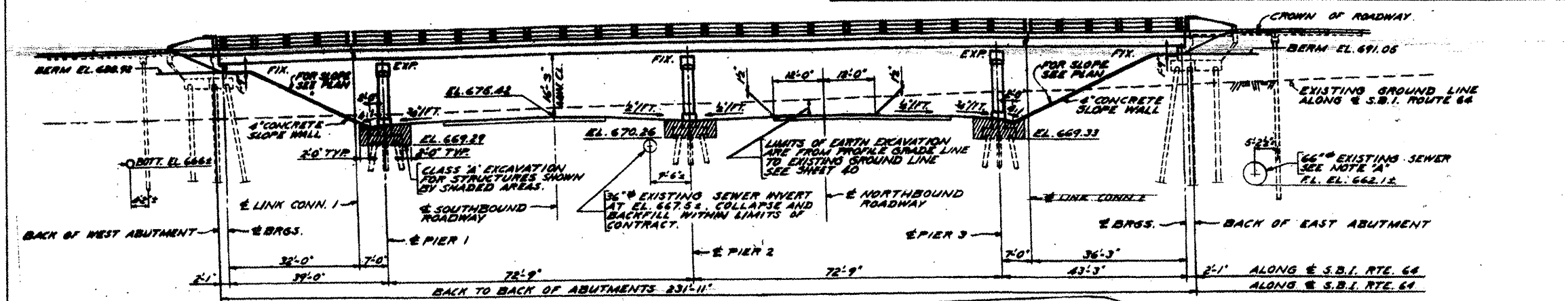
ILLINOIS DEPARTMENT OF TRANSPORTATION
 LOCATION 1: SN 022-0106
 I 290 @ NORDIC RD

CONTRACT 60E91

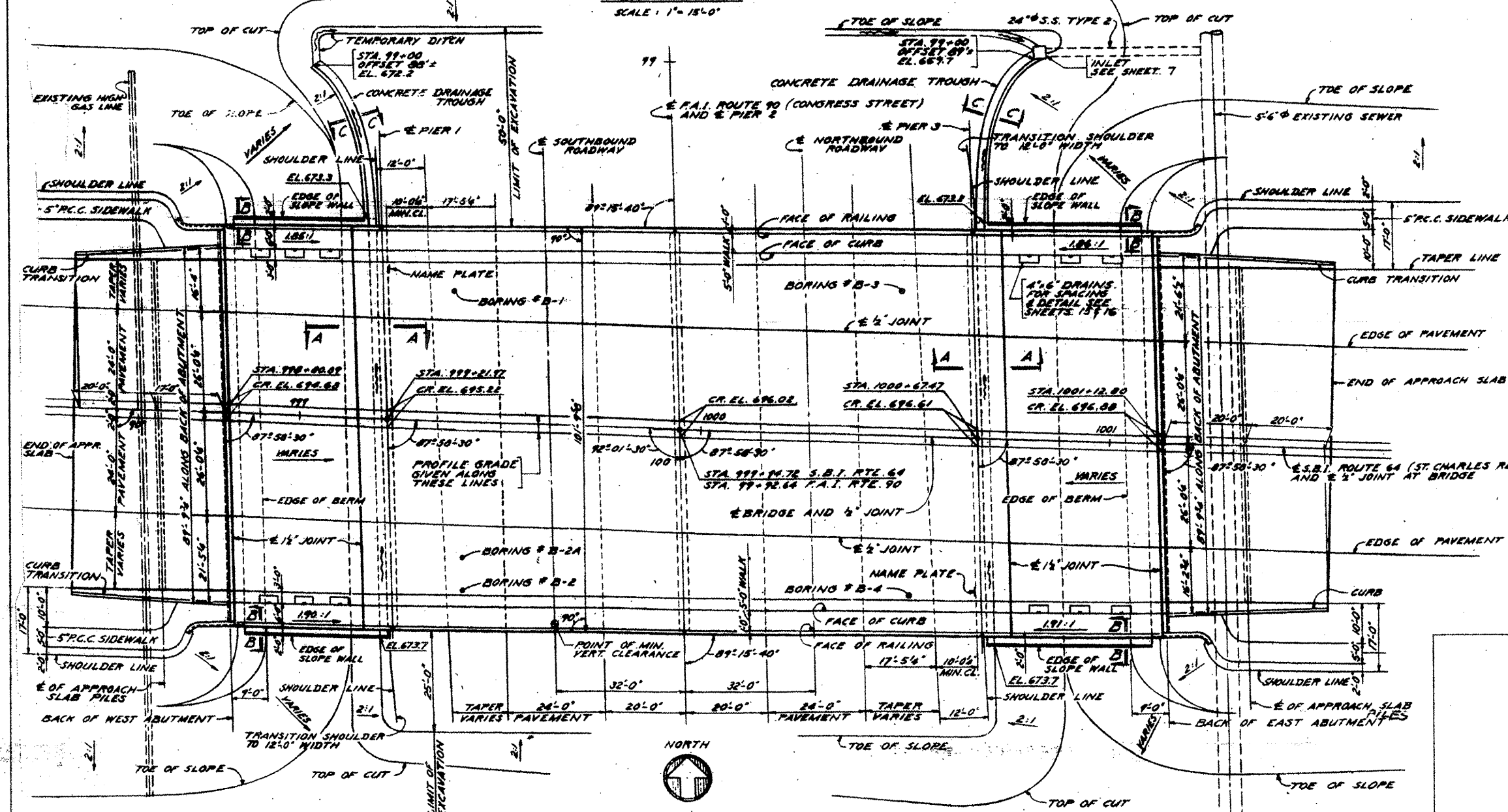
*EXISTING SLOPE WALL IS ±5" THICK.

SHT 2 OF 2

ROUTE	SECTION	COUNTY	TOTAL SHEETS	SHEET NUMBER
FAI 290	2008-045 I	COOK & DUPAGE	10	7



ELEVATION
SCALE: 1" = 15'-0"



PLAN

FOR INFORMATION ONLY

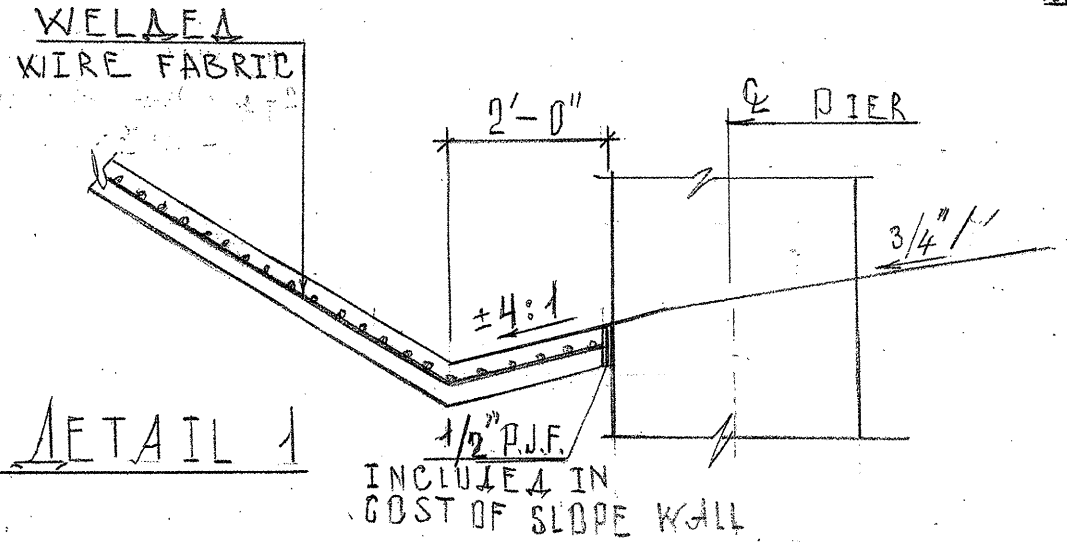
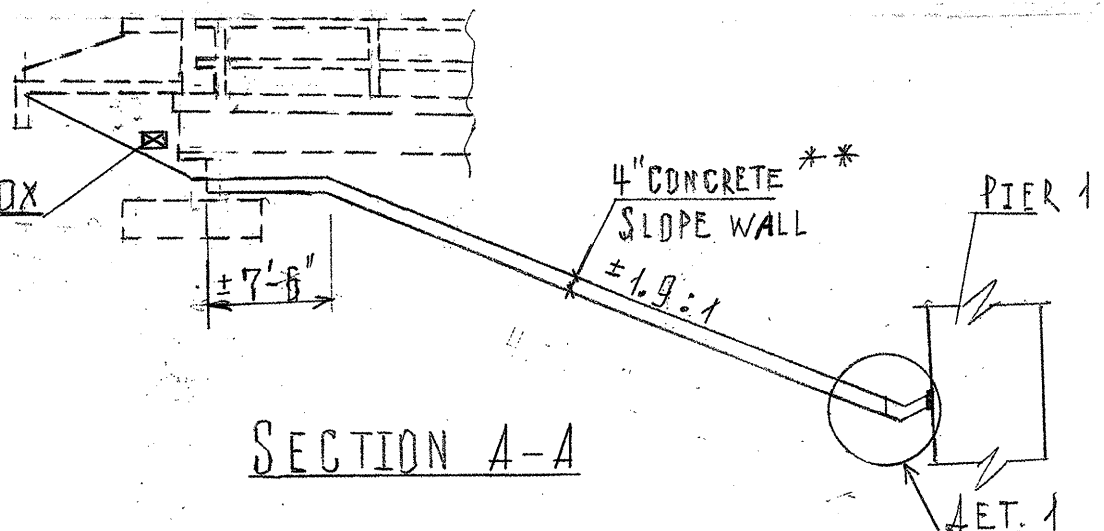
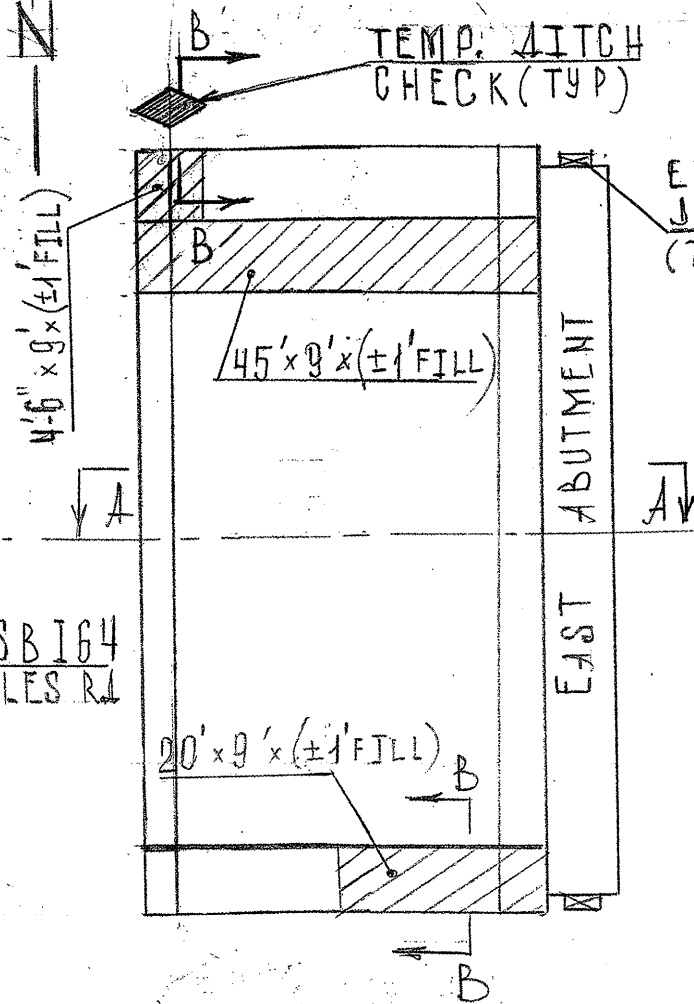
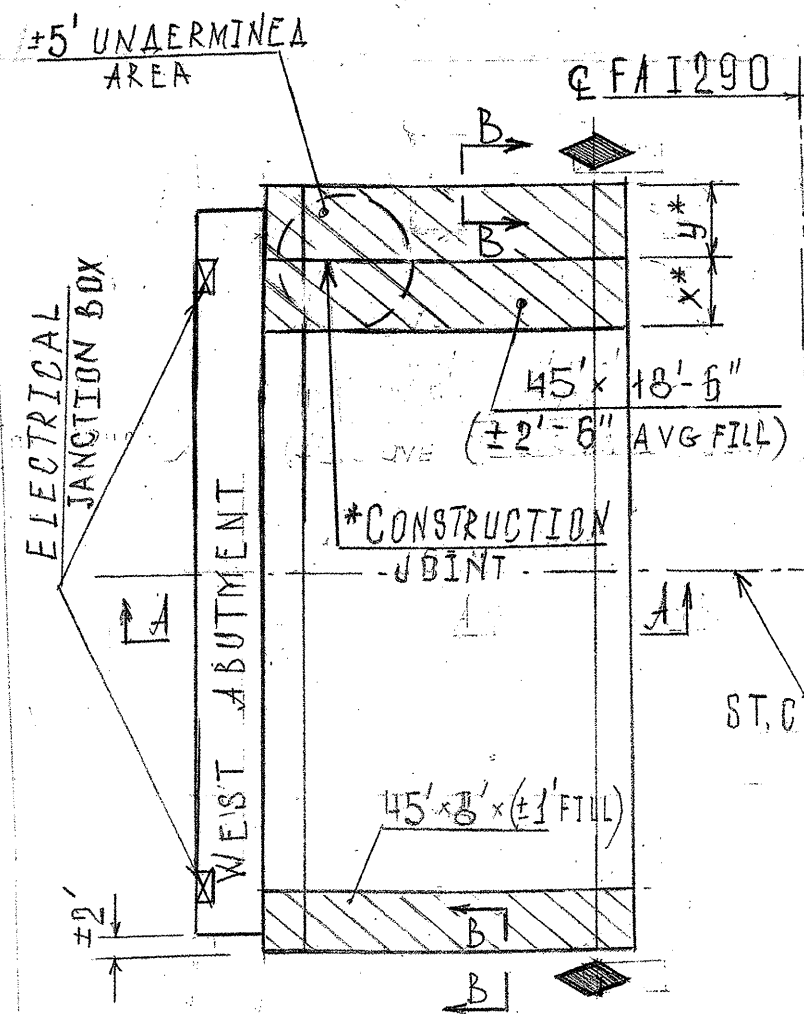
ILLINOIS DEPARTMENT OF
TRANSPORTATION

LOCATION 2: SN 016 - 1136
I 290 @ ST CHARLES RD
EXISTING PLAN

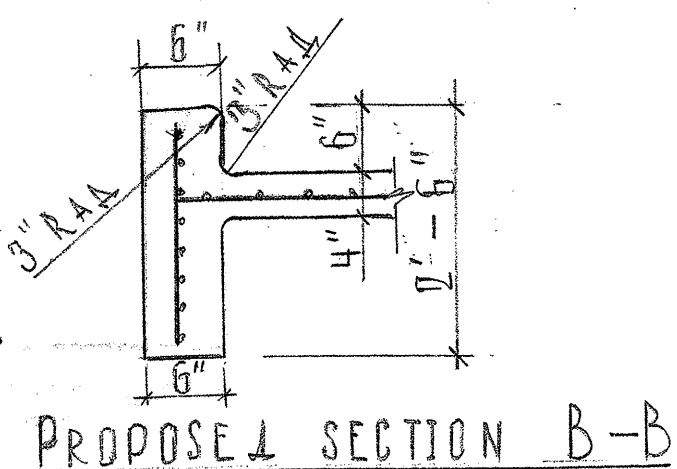
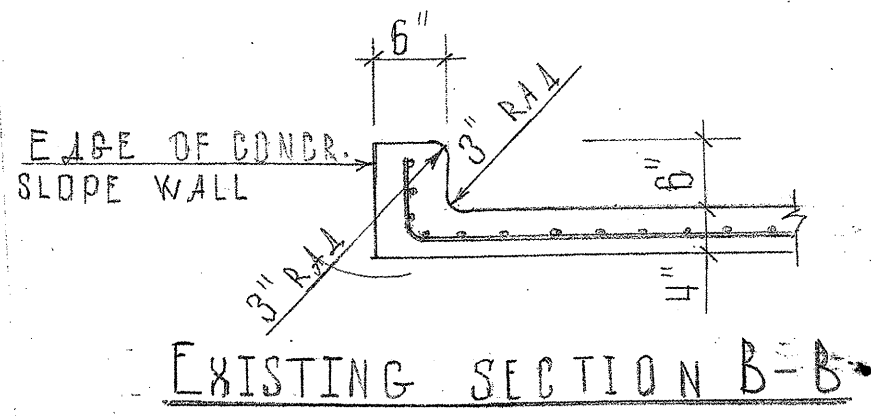
CONTRACT 60E91

SHT 1 OF 2

ROUTE	SECTION	COUNTY	TOTAL SHEETS	SHEET NUMBER
FAI 290	2008-0451	COOK & DUPAGE	10	8



HATCHED AREAS INDICATE "SLOPE WALL REMOVAL" "SLOPEWALL 4inch" & "POROUS GRANULAR EMBANKMENT" FILL OF APPROXIMATE DEPTH SPECIFIED.



* THE CONSTRUCTION JOINT OF THE PANELS SHALL BE STAGGERED TO AVOID LAYING DIRECTLY BENEATH DECK DRAINS.
 THE WEST ABUTMENT'S SLOPEWALL GUTTER SHALL BE CLEANED OUT. COST INCLUDED IN SLOPEWALL REMOVAL.
 THE CONTRACTOR SHALL TAKE NECESSARY PRECAUTIONS WHEN WORKING AT THE ABUTMENTS DUE TO ELECTRICAL JUNCTION BOXES AND ATTACHED CONDUIT.
 **EXISTING SLOPEWALL IS ±4.5" TO ±5" THICK.

ILLINOIS DEPARTMENT OF TRANSPORTATION
 LOCATION 2: SN 016 - 1136
 I 290 @ ST CHARLES RD

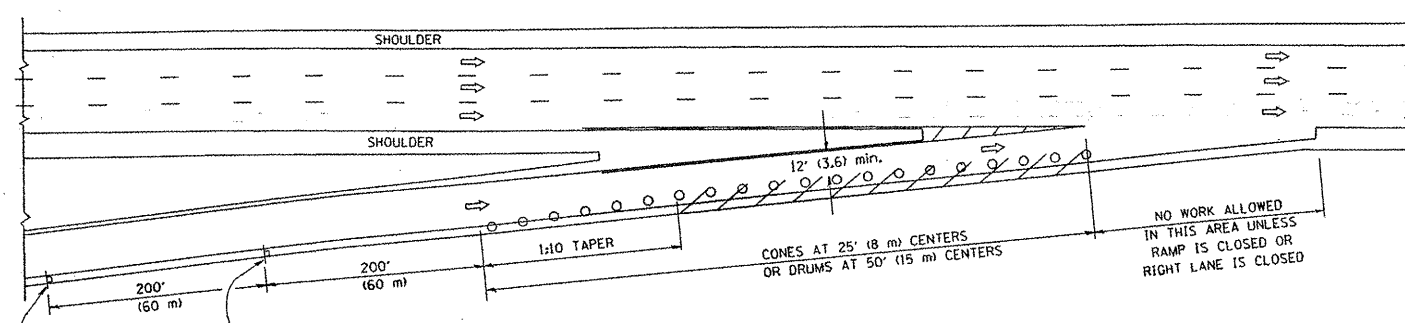
CONTRACT 60E91

SHT 2 OF 2

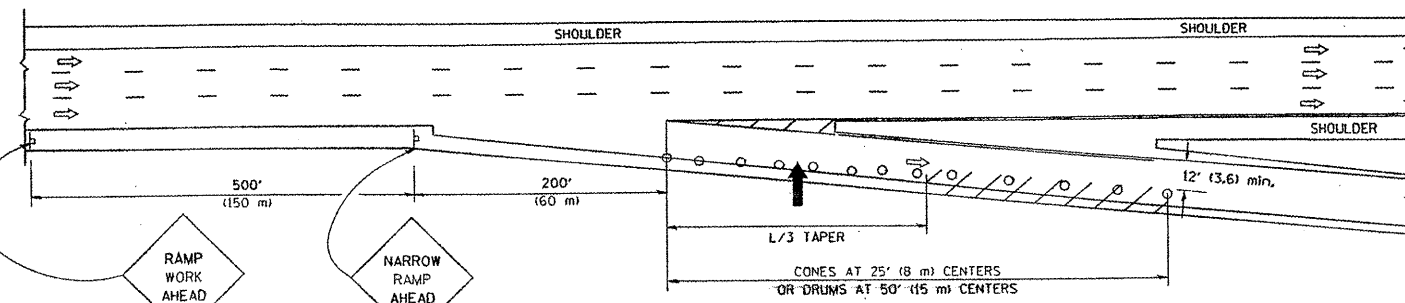
PARTIAL RAMP CLOSURE DETAILS

SHOULDER CLOSURE DETAILS

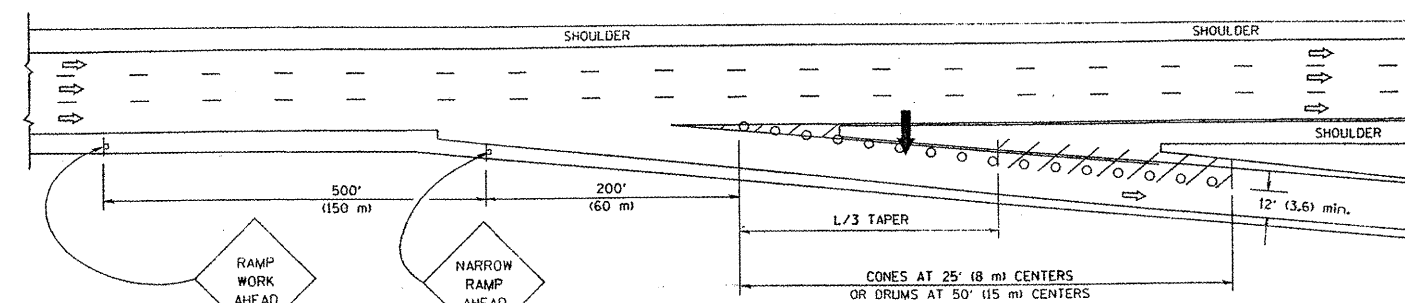
F.A.1	SECTION	COUNTY	TOTAL SHEETS	SHEET NO.
0902008-0451	X	110	9	
STA.	TO STA.			
FED. ROAD DIST. NO.	ILLINOIS FED. AID PROJECT			



TYPICAL ENTRANCE RAMP



TYPICAL EXIT RAMP



TYPICAL EXIT RAMP

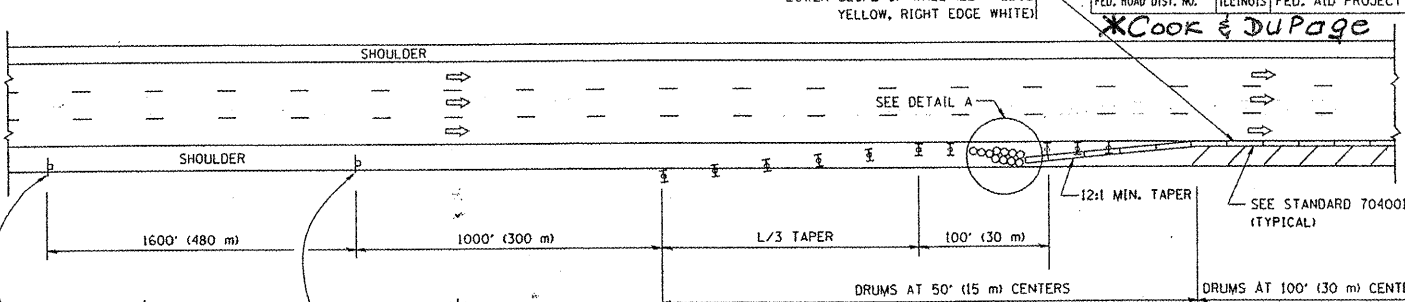
SYMBOLS

- ➔ ARROWBOARD
- ▨ WORK AREA
- ⊥ SIGN ON PORTABLE OR PERMANENT SUPPORT
- FLAGGER WITH CONTROL SIGN
- ⊥ TYPE II BARRICADE, DRUM OR VERTICAL BARRICADE WITH STEADY BURN MONO-DIRECTIONAL LIGHT
- CONE, DRUM OR BARRICADE

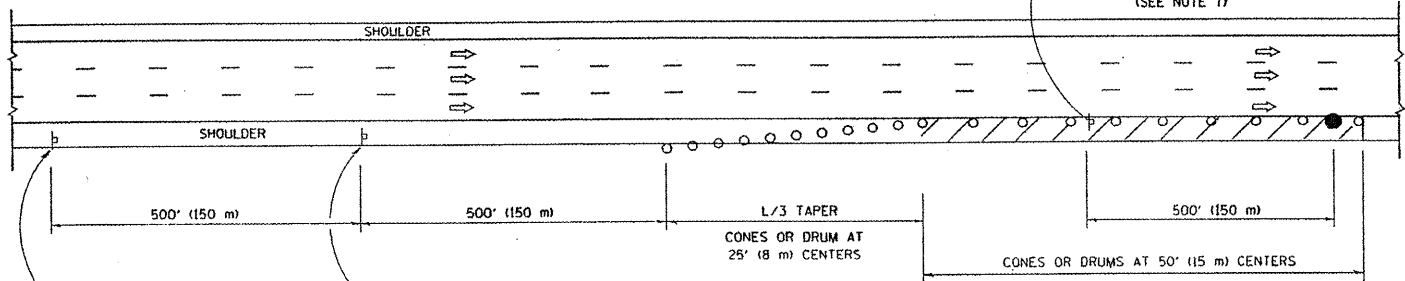
GENERAL NOTES

1. THE "L" DISTANCE EQUALS:

SPEED LIMIT	FORMULAS
45 mph (80 km/h) OR GREATER:	METRIC ENGLISH $L=0.65(W)(S)$ $L=(W)(S)$
W = WIDTH OF OFFSET IN FEET (METERS)	
S = NORMAL POSTED SPEED MPH (KM/H)	
2. PLASTIC DRUMS WITH HIGH PERFORMANCE REFLECTIVE SHEETING AND STEADY BURNING LIGHTS ARE REQUIRED FOR ALL NIGHTTIME CLOSURES.
3. ALL SIGNS SHALL BE POST MOUNTED IF THE CLOSURE TIME EXCEEDS FOUR DAYS.
4. FLASHING LIGHTS SHALL BE USED DURING THE HOURS OF DARKNESS AND SHALL BE INSTALLED ABOVE THE FIRST TWO SETS OF SIGNS.



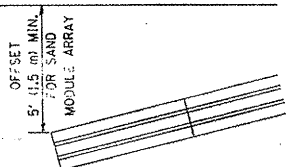
PERMANENT SHOULDER CLOSURE



DAYTIME SHOULDER CLOSURE

THIS DETAIL IS USED WHERE:
1. VEHICLES, EQUIPMENT, WORKERS OR THEIR ACTIVITIES ENCR OACH IN AN AREA CLOSER THAN 15' (4.5 m) TO THE EDGE OF PAVEMENT FOR A PERIOD IN EXCESS OF 15 MINUTES.

ARRAY DESIGN PER MANUFACTURER TO BE NCHRP 350 COMPLIANT FOR POSTED SPEED.



DETAIL "A" IMPACT ATTENUATOR, TEMPORARY (SEE NOTE 5)

5. THE IMPACT ATTENUATOR, TEMPORARY IS NOT REQUIRED WHEN THE TEMPORARY CONCRETE BARRIER WALL IS PROTECTED BY OR IS TIED INTO THE EXISTING GUARDRAIL. IF OFFSET IS LESS THAN 5 FEET USE "TRAFFIC BARRIER TERMINAL, TYPE III, TEMPORARY" DEVICE TO MEET NCHRP350 FOR POSTED SPEED.
6. AUTHORIZATION FROM THE DISTRICT'S BUREAU OF TRAFFIC IS REQUIRED FOR ALL FREEWAY CLOSURES.
7. THE FLAGGER AND FLAGGER SIGN ARE REQUIRED AT THE ABOVE WORK SITES WHEN:
 - a. FOUR OR MORE WORK VEHICLES ENTER THE TRAFFIC LANES IN A ONE HOUR PERIOD.
 - b. THE WORK ACTIVITY REQUIRES FREQUENT ENCROACHMENT INTO THE LANE OPEN TO TRAFFIC.
 THE FLAGGER SHALL BE STATIONED APPROXIMATELY 100' (30 m) TO 200' (60 m) IN ADVANCE OF THE WORKERS.

ALL DIMENSIONS ARE IN INCHES (MILLIMETERS) UNLESS OTHERWISE SHOWN.

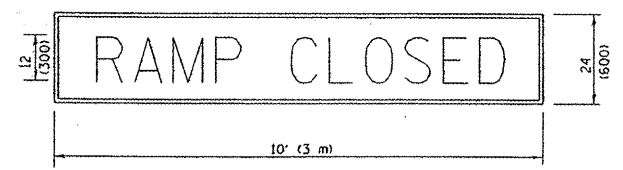
REVISIONS	
NAME	DATE
DWS	11/96
JAF	12/02
NCHRP 350	04/03
JAF	2/06
SPB	1/07

ILLINOIS DEPARTMENT OF TRANSPORTATION
TRAFFIC CONTROL DETAILS FOR FREEWAY SHOULDER CLOSURES PARTIAL RAMP CLOSURES
DESIGNED BY: DWS
DRAWN BY:
CHECKED BY:
SCALE: NONE
TC-17

PLOT DATE: 3/7/2007
FILE NAME: K:\projects\032395\032395.dgn
PLOT SCALE: 80,0000 / 1 IN.
USER NAME: bboard

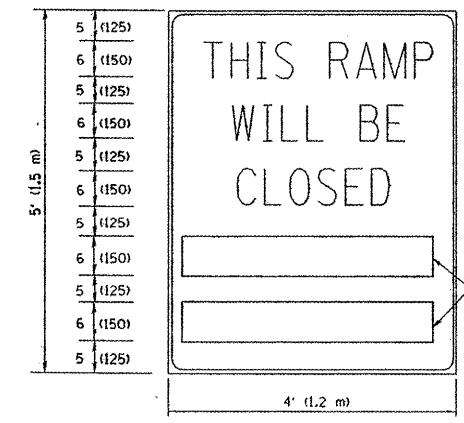
*COOK & DuPage

RAMP CLOSURE ADVANCE WARNING SIGN



BLACK LEGEND ON ORANGE REFLECTORIZED BACKGROUND
 1 (25) BORDER
 THESE SIGNS ARE REQUIRED ON ALL THE EXIT GUIDE SIGNS FOR THE CLOSED EXIT RAMP.

RAMP CLOSURE ADVANCE INFORMATION SIGN



BLACK LEGEND ON WHITE REFLECTORIZED BACKGROUND
 1/2 (12) BORDER
 THESE BLANK AREAS SHALL BE FILLED WITH THE DATES AND THE TIME THAT THE RAMP WILL BE CLOSED.

THESE SIGNS ARE REQUIRED ON BOTH SIDES OF THE RAMP. MINIMUM OF 1 WEEK IN ADVANCE OF THE CLOSURE.

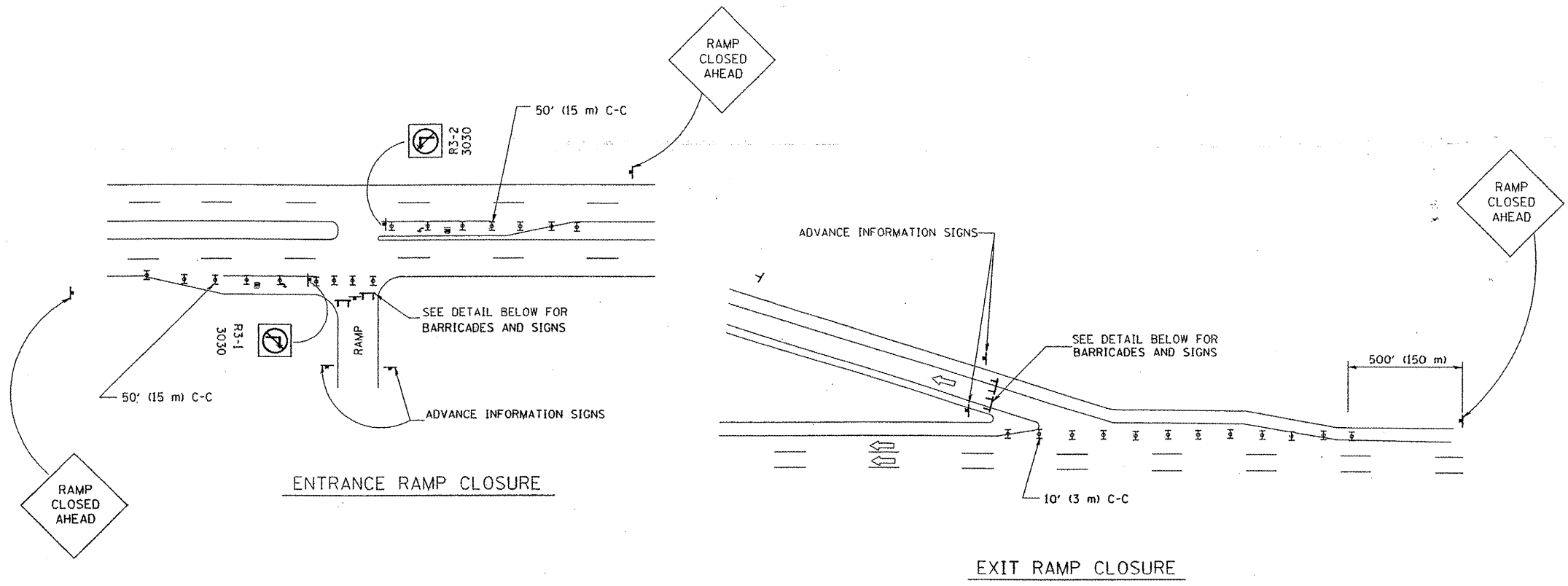
GENERAL NOTES:

1. CONES MAY BE SUBSTITUTED FOR DRUMS OR TYPE II BARRICADES DURING DAY OPERATIONS. CONES SHALL BE A MINIMUM OF 28 (700) HIGH.
2. STEADY BURN LIGHTS WILL NOT BE REQUIRED FOR DAY OPERATIONS.
3. A FLAGGER SHALL BE POSITIONED AT EACH CLOSED RAMP THAT IS OPEN TO CONSTRUCTION VEHICLES.
4. ALL ROUTE MARKERS AND TRAILBLAZER ASSEMBLIES WHICH DIRECT MOTORISTS TO A CLOSED ENTRANCE RAMP SHALL BE COVERED.
5. THE SIGNING AND BARRICADING WHICH IS REQUIRED BY THIS DETAIL SHALL BE INCLUDED IN THE COST OF TRAFFIC CONTROL AND PROTECTION (EXPRESSWAYS).
6. AUTHORIZATION FROM THE DISTRICT'S BUREAU OF TRAFFIC IS REQUIRED FOR ALL RAMP CLOSURES.
7. THE RAMP CLOSURE ADVANCE INFORMATION SIGNS SHALL BE ERECTED IF THE CLOSURE TIME EXCEEDS TWENTY-FOUR (24) HOURS. ADDITIONAL ADVANCE WARNING SIGNS ON EXIT GUIDE SIGNING WILL BE REQUIRED FOR EXIT RAMP CLOSURES THAT EXCEED TWENTY FOUR (24) HOURS IN LENGTH.

ALL DIMENSIONS ARE IN INCHES (MILLIMETERS) UNLESS OTHERWISE SHOWN.

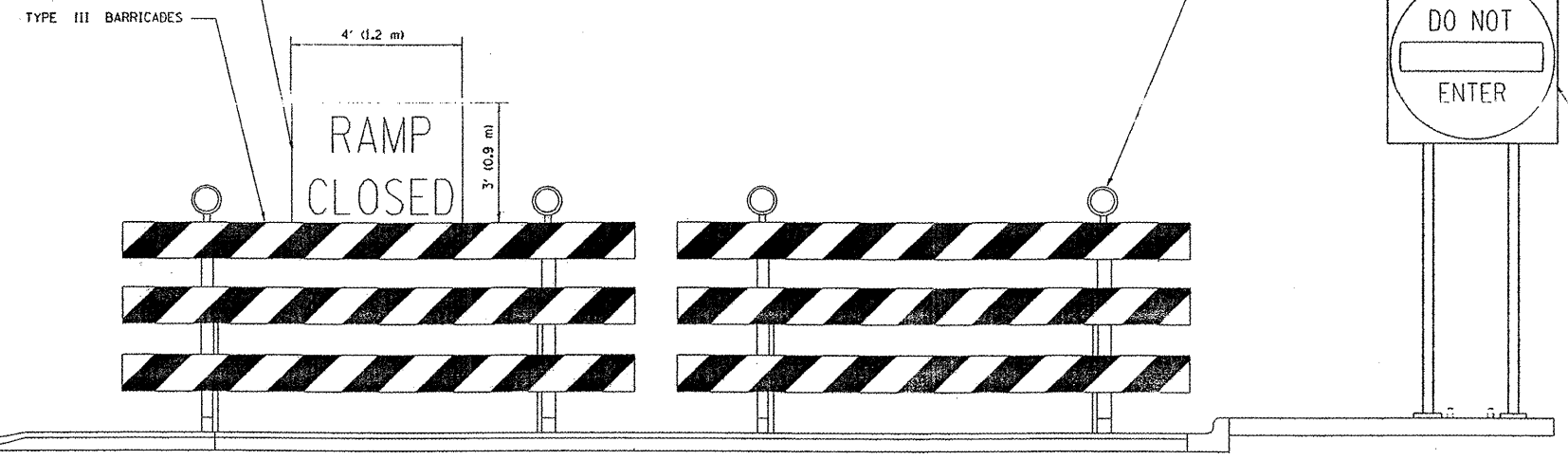
REVISIONS	
NAME	DATE
DWS	2-83
DWS	1/90
DWS	9/94
DWS	12/94
DWS/JAF	12/02
JAF	2/06
SPB	1/07
Revise devices to meet NCHRP 350	4/03

ILLINOIS DEPARTMENT OF TRANSPORTATION
 FREEWAY
 ENTRANCE AND EXIT RAMP
 CLOSURE DETAILS
 SCALE: NONE
 DRAWN BY
 CHECKED BY
 TC-8



THE "RAMP CLOSED" SIGN SHALL BE B/W WITH 8 (200) CAPS. IF A TYPE III BARRICADE WITH AN ATTACHED SIGN PANEL WHICH MEETS NCHRP 350 IS NOT AVAILABLE, THE SIGNS MAY BE MOUNTED ON NCHRP 350 TEMPORARY SIGN SUPPORTS DIRECTLY IN FRONT OF THE BARRICADE.

FLASHER UNIT AMBER BOTH SIDES OF EACH TYPE III BARRICADE



DETAIL FOR REQUIRED BARRICADES & SIGNS

- SYMBOLS
- ▬ TYPE II BARRICADE, DRUM OR VERTICAL BARRICADE WITH STEADY BURN MONO-DIRECTIONAL LIGHT
 - ▬ TYPE III BARRICADE WITH FLASHING LIGHT

PLOT DATE: 3/6/2007
 FILE NAME: K:\ad\st\st\080808.dwg
 USER: NME