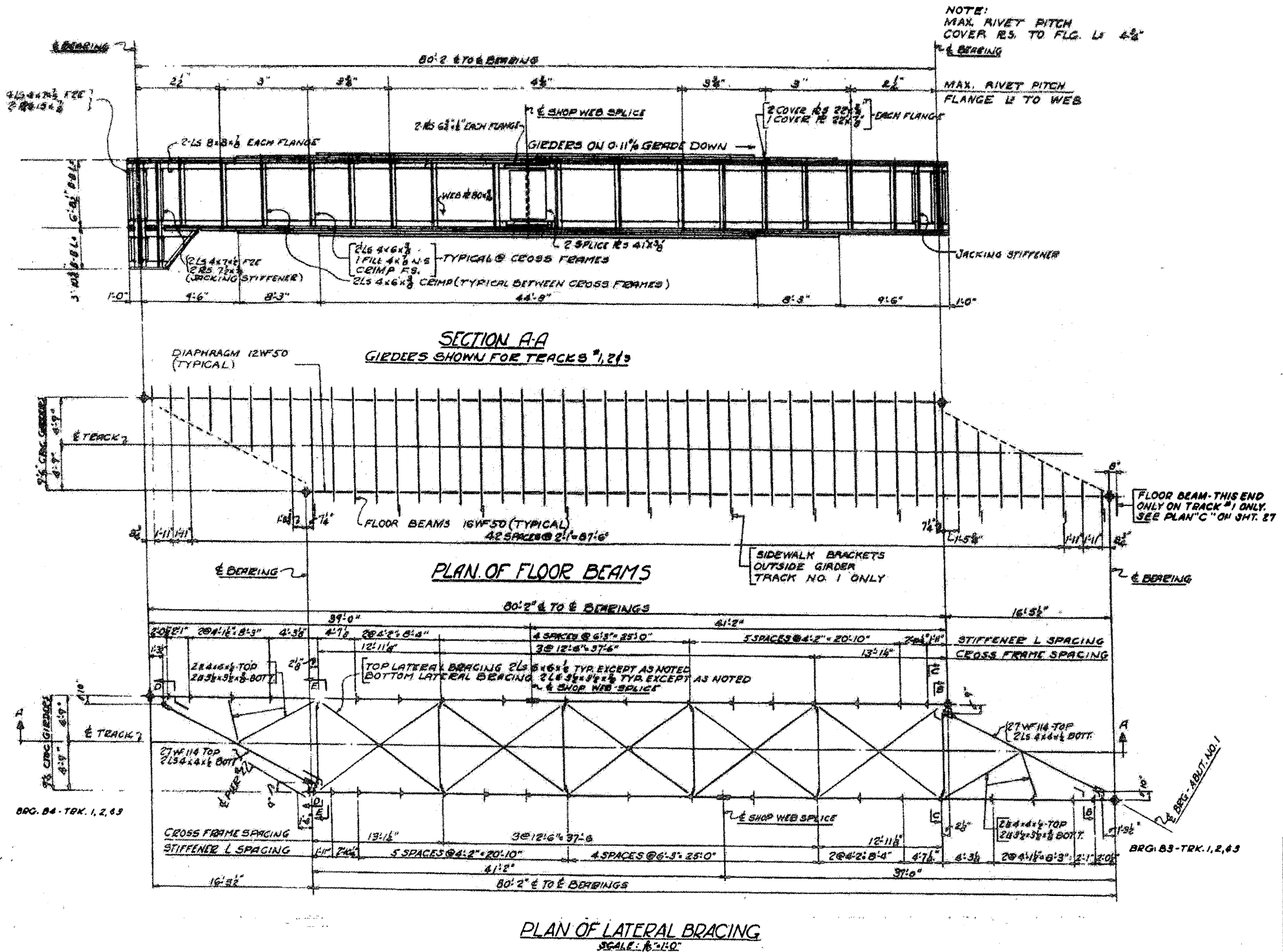


ROUTE	SECTION	COUNTY	TOTAL SHEETS	SHEET NUMBER
VARIOUS	2008-053 BP	VARIOUS	69	42

CONTRACT NO. 60F04



LOCATION NO. 9

EXIST. BRIDGE PLANS
UP RR OVER I-90/94 & CTA
SN 016-0119