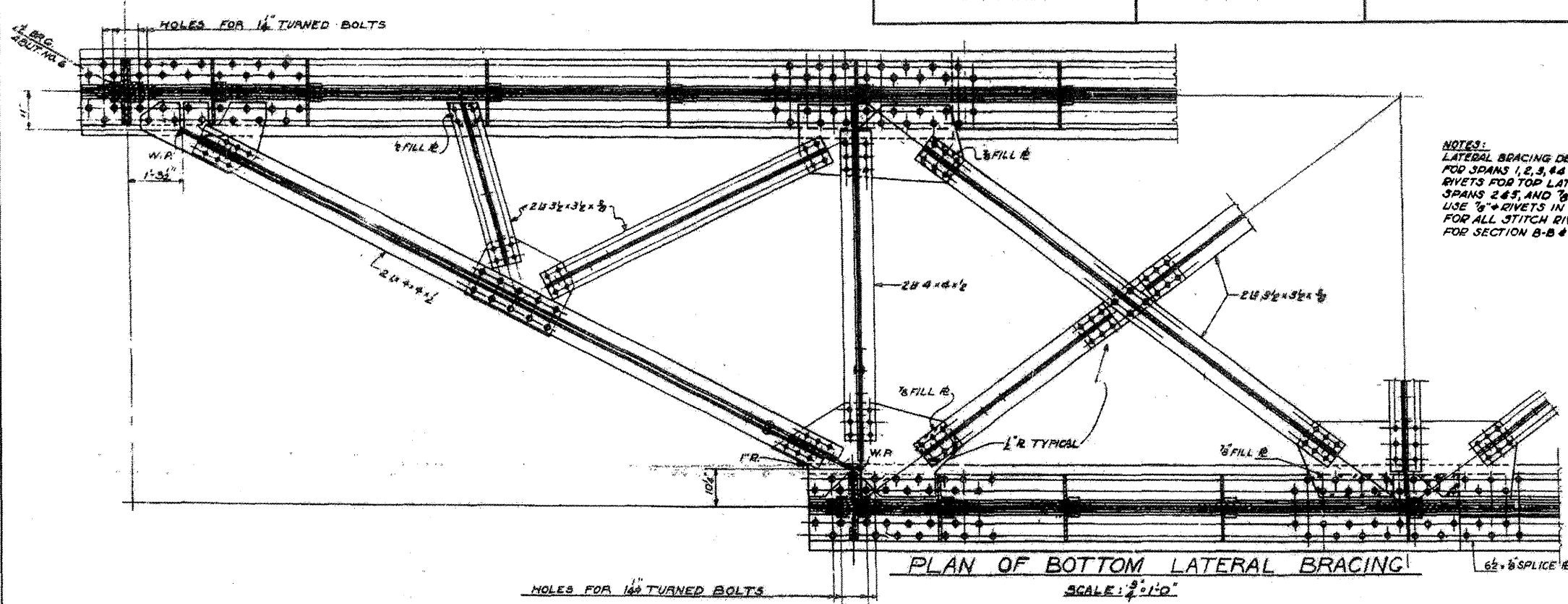
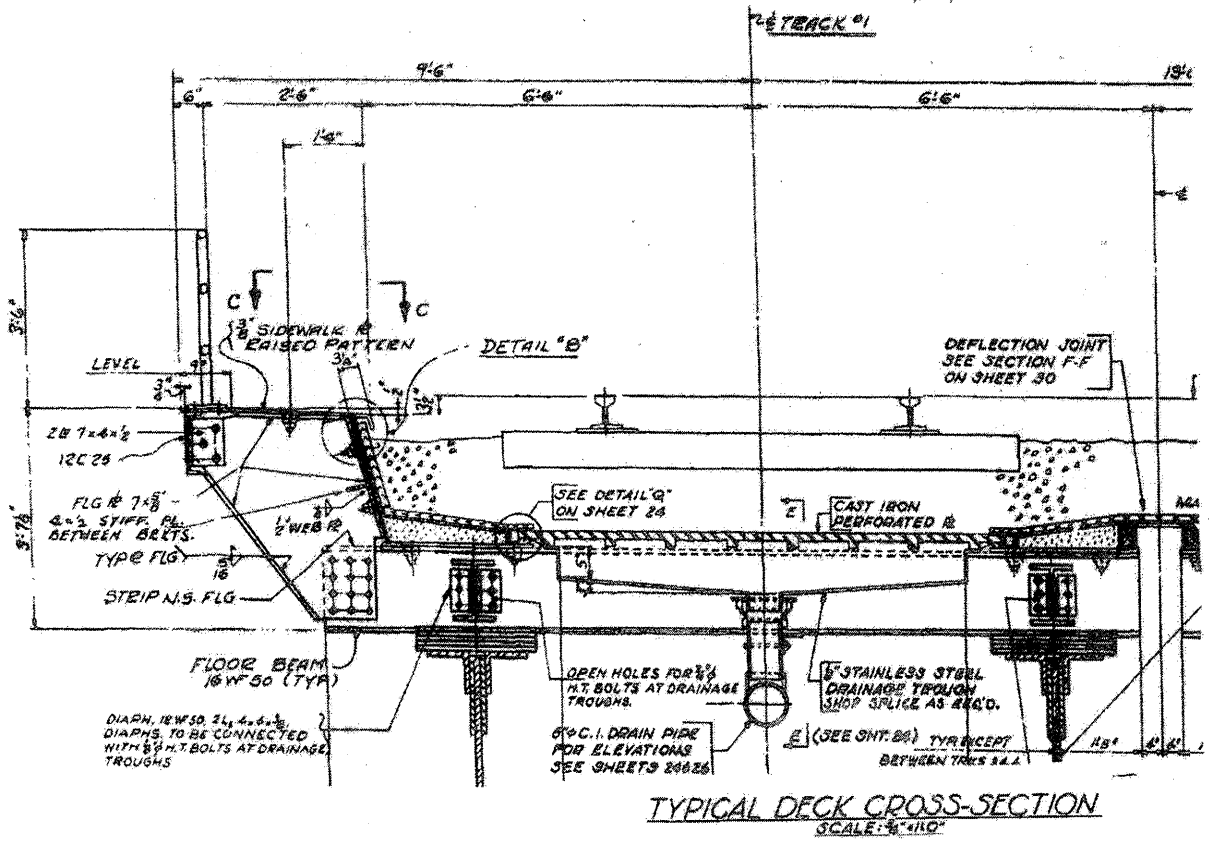


ROUTE VARIOUS	SECTION 2008-053 BP	COUNTY VARIOUS	TOTAL SHEETS 69	SHEET NUMBER 47A
------------------	------------------------	-------------------	-----------------------	------------------------

CONTRACT NO. 60F04



NOTES:  
LATERAL BRACING DETAILS ARE SHOWN FOR SPAN 5. DETAILS FOR SPANS 1, 2, 3, & 4 ARE SIMILAR EXCEPT AS NOTED. RIVETS FOR TOP LATERAL BRACING ARE TO BE 1" IN SPANS 2 & 3, AND 3/4" IN SPANS 1, 3, & 4. USE 3/4" RIVETS IN ALL BOTTOM LATERAL BRACING AND FOR ALL STITCH RIVETING. FOR SECTION B-B & C-C SEE SHEET 22



**LOCATION NO. 9**

**EXIST. BRIDGE PLANS**

**UP RR OVER I-90/94 & CTA**

**SN 016-0119**