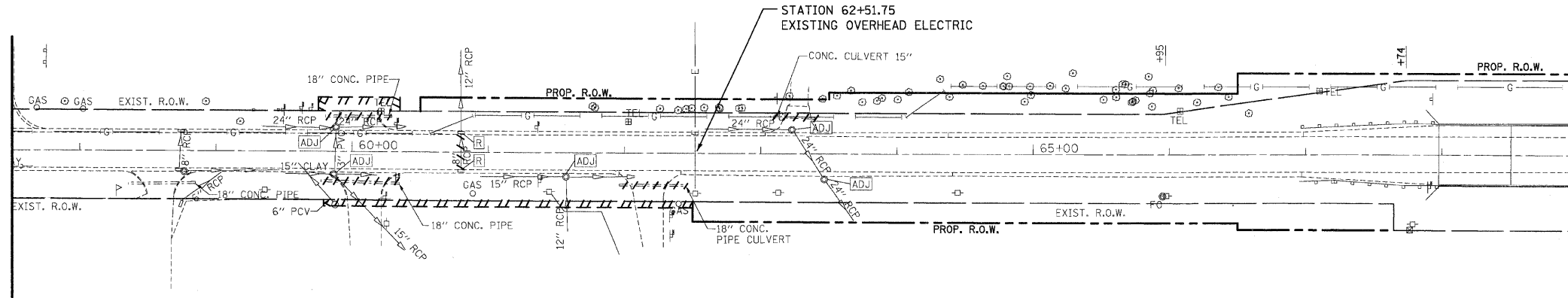


LEGEND

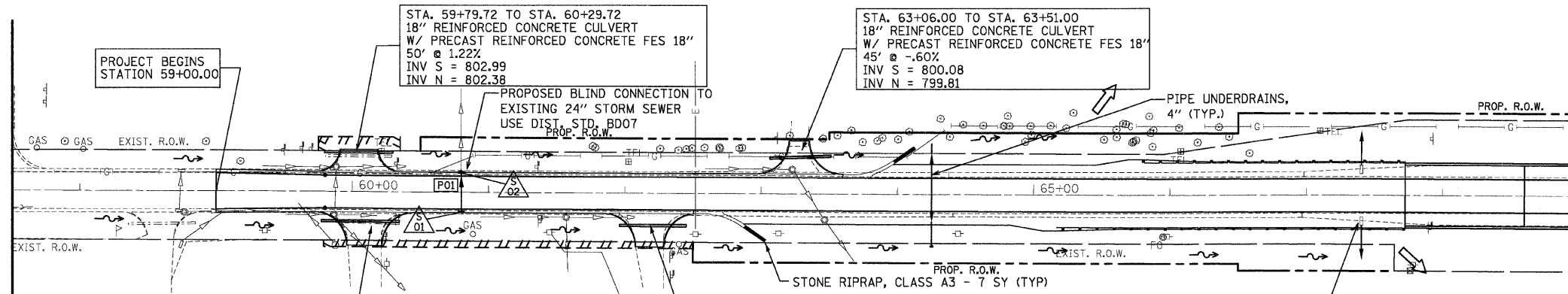
- [R] STRUCTURE TO BE REMOVED & REPLACED
- [ADJ] STRUCTURE TO BE ADJUSTED
- [REL] STRUCTURE TO BE RELOCATED
- /// STORM SEWER REMOVAL



MATCHLINE STA. 69+00
SEE SHEET NO. 36

EXISTING VIEW

- S01
60+80.11 14.21' RT
2' IN TY A
TY 23 F&G
RIM = 804.59
IE = 801.40
- S02
60+80.06 14.44' LT
4' CB TY 23 F&G
RIM = 804.58
IE = 800.00
- P01
27' -SS, 12" RCP
FL 801.40-800.00

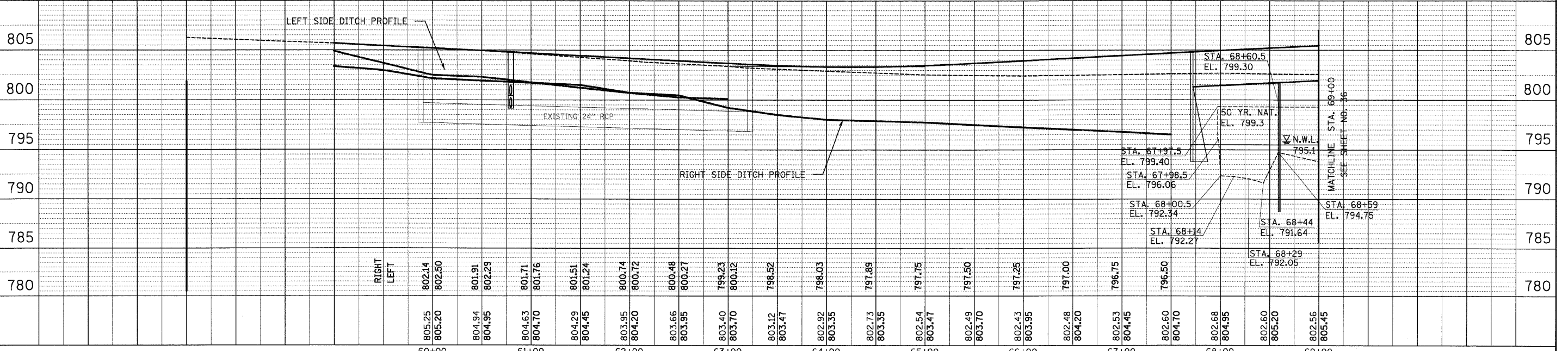
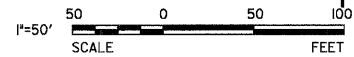


MATCHLINE STA. 69+00
SEE SHEET NO. 36

NOTES

1. OFFSETS OF CULVERTS AND SKEW ANGLES ARE PROVIDED ON THE SCHEDULE OF QUANTITIES

PROPOSED VIEW



FILE NAME =	USER NAME = *USER*	DESIGNED - GJM	REVISED - 5/13/2008	STATE OF ILLINOIS DEPARTMENT OF TRANSPORTATION	DRAINAGE AND UTILITIES	SCALE: 1" = 50'	SHEET NO. 1 OF 3 SHEETS	STA. 59+00 TO STA. 69+00	F.A.P. RTE. 324	SECTION 23B-1	COUNTY MCHENRY	TOTAL SHEETS 97	SHEET NO. 35		
FILEL		CHECKED - EJL	REVISED - 7/18/2008			CONTRACT NO. 62892									
PLOT SCALE = *SCALE*		DRAWN - GJM	REVISED -												
PLOT DATE = 10/10/2008		CHECKED - EJL	REVISED -												