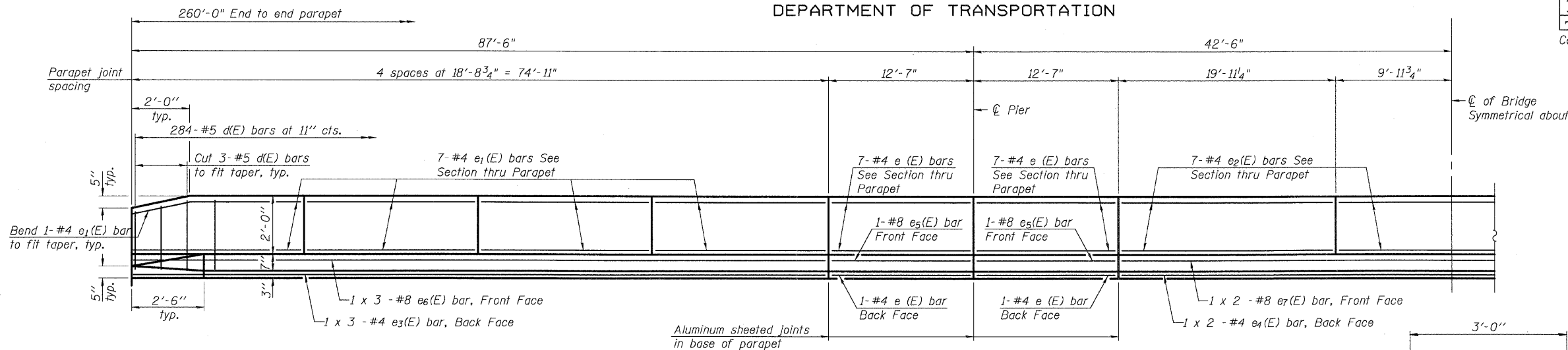


STATE OF ILLINOIS
DEPARTMENT OF TRANSPORTATION

ROUTE NO. F.A.P. 324	SECTION 23B-1	COUNTY MCHENRY	TOTAL SHEETS 97	SHEET NO. 50	SHEET NO. 10 25 SHEETS
FED. ROAD DIST. NO. 1		ILLINOIS	FED. AID PROJECT		

Contract # 62892

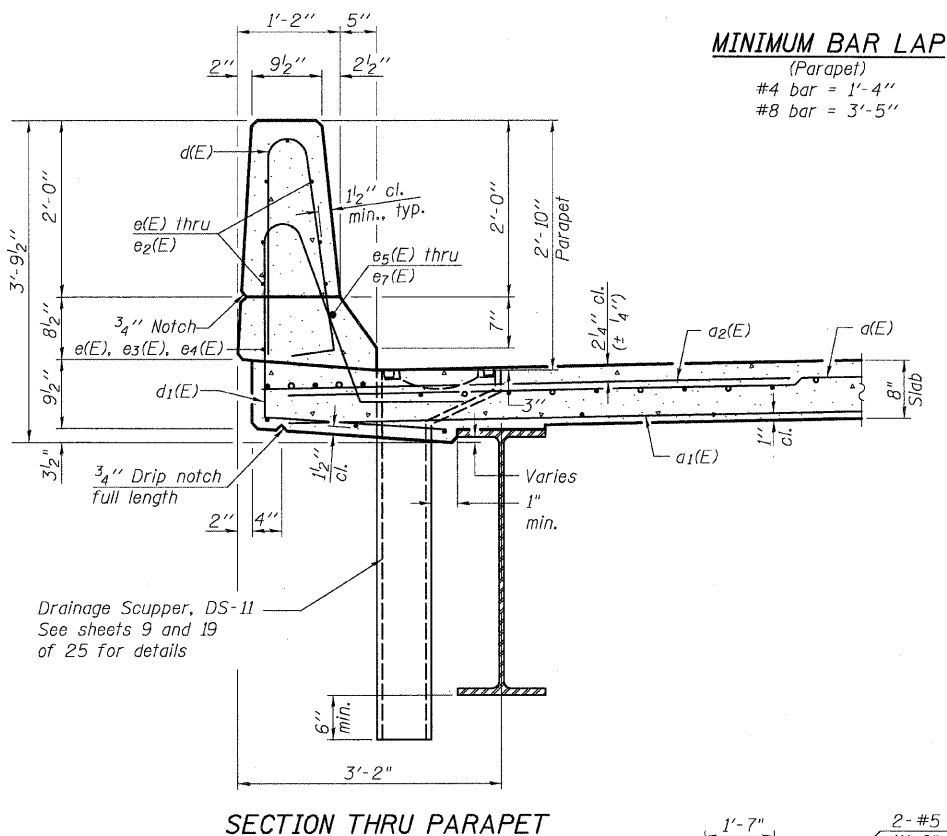


INSIDE ELEVATION OF PARAPET

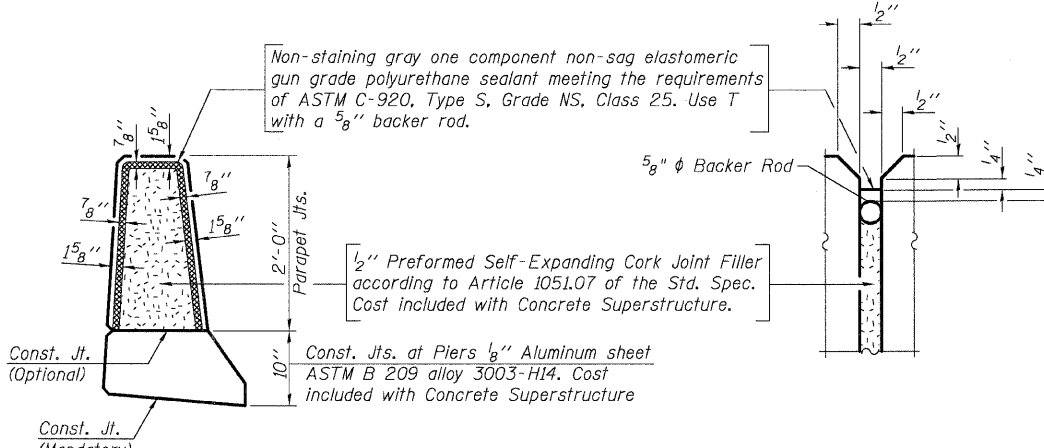
SUPERSTRUCTURE
BILL OF MATERIAL

Bar	No.	Size	Length	Shape	
a(E)	447	#5	46'-6"	—	
a ₁ (E)	313	#5	45'-10"	—	
a ₂ (E)	894	#6	6'-0"	—	
a ₃ (E)	16	#5	1'-6"	—	
b(E)	450	#5	30'-4"	—	
b ₁ (E)	94	#6	43'-7"	—	
b ₂ (E)	410	#5	27'-5"	—	
d(E)	568	#5	5'-7"	┌	
d ₁ (E)	568	#5	7'-9"	┌	
e(E)	64	#4	12'-3"	—	
e ₁ (E)	112	#4	18'-5"	—	
e ₂ (E)	42	#4	19'-7"	—	
e ₃ (E)	12	#4	25'-11"	—	
e ₄ (E)	4	#4	30'-6"	—	
e ₅ (E)	8	#8	12'-3"	—	
e ₆ (E)	12	#8	27'-11"	—	
e ₇ (E)	4	#8	31'-11"	—	
m(E)	4	#6	45'-0"	—	
m ₁ (E)	6	#6	46'-10"	—	
m ₂ (E)	8	#6	24'-6"	—	
m ₃ (E)	14	#6	5'-6"	—	
m ₄ (E)	4	#6	2'-10"	—	
s(E)	96	#5	5'-3"	└	
s ₁ (E)	82	#4	9'-0"	└	
v(E)	92	#5	3'-4"	└	
Reinforcement Bars, Epoxy Coated				Pound	91,540
Concrete Superstructure				Cu. Yds.	409.2

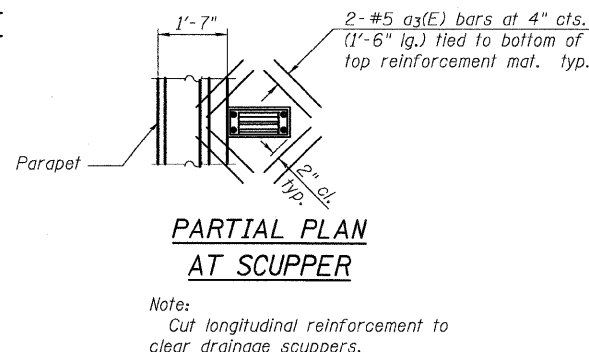
Bars indicated thus 1 x 3- #4 etc. indicates 1 line of bars with 3 lengths per line.



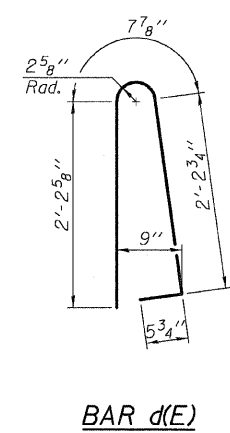
SECTION THRU PARAPET



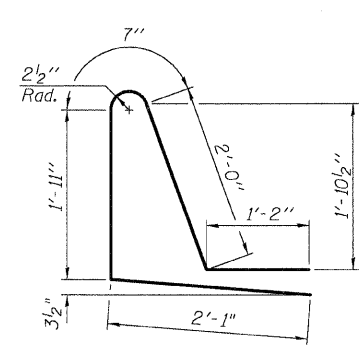
PARAPET JOINT DETAILS



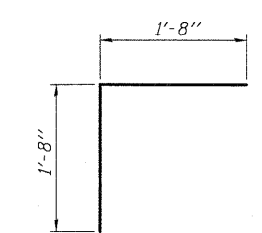
PARTIAL PLAN AT SCUPPER



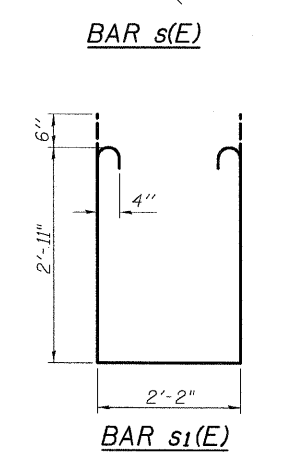
BAR d(E)



BAR d₁(E)



BAR v(E)



BAR s(E)

BAR s₁(E)

DESIGNED	CJB
CHECKED	PWO
DRAWN	DRP
CHECKED	PJM



V3 Companies of Illinois Ltd.
7325 Janes Avenue
Woodridge, IL 60517
630.724.9200 phone
630.724.9202 fax
www.v3co.com

SUPERSTRUCTURE
ILL. ROUTE 23 OVER
KISHWAUKEE RIVER
F.A.P. RT. 324
MCHENRY COUNTY
STATION 69+02.50
STRUCTURE NO. 056-0001