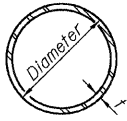


STATE OF ILLINOIS
DEPARTMENT OF TRANSPORTATION

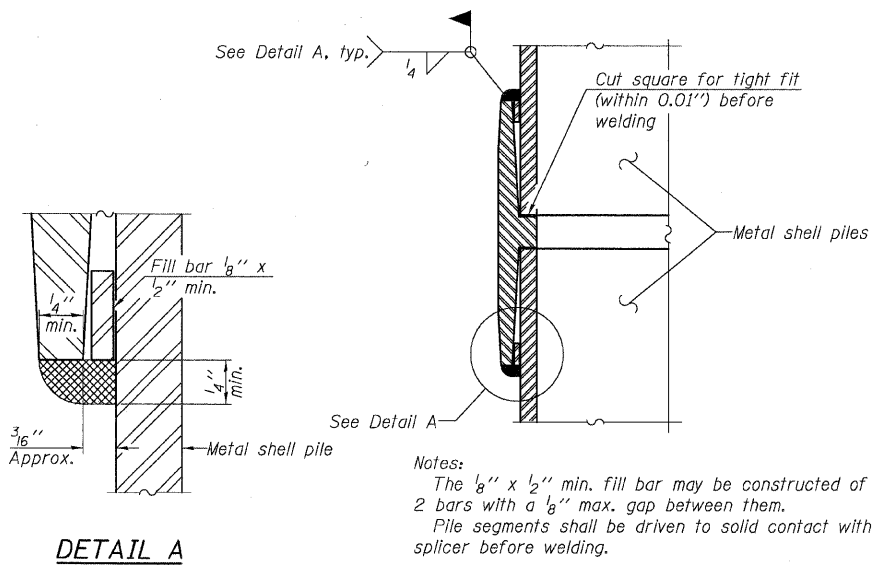
ROUTE NO.	SECTION	COUNTY	SHEET	SHEET NO.
F.A.P. 324	23B-1	McHENRY	97	56
FED. ROAD DIST. NO. 1		ILLINOIS	FED. AID PROJECT-	

Contract # 62892



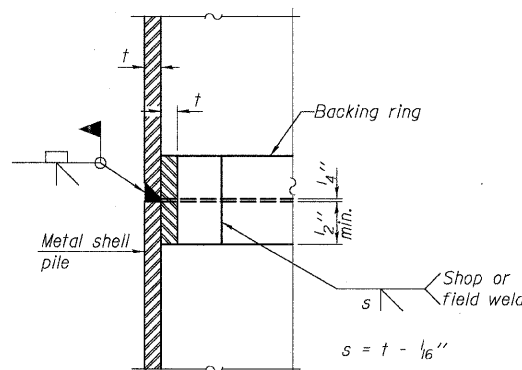
METAL SHELL PILE TABLE

Designation and outside diameter	Wall thickness t	Weight per foot (Lbs./ft.)	Inside volume (yd. ³ /ft.)
PP12	0.179"	22.60	0.0274
PP12	0.250"	31.37	0.0267
PP14	0.250"	36.71	0.0368
PP14	0.312"	45.61	0.0361



DETAIL A

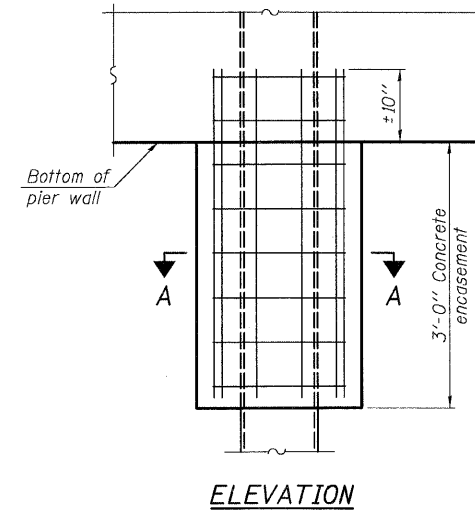
WELDED COMMERCIAL SPLICE



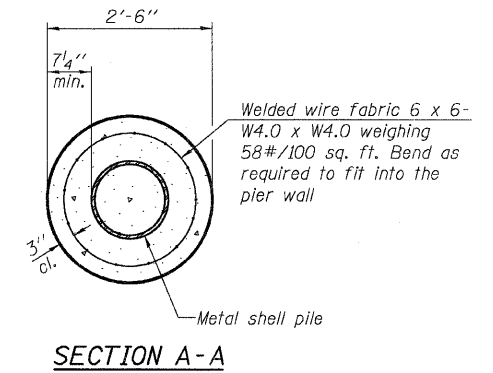
COMPLETE PENETRATION WELD SPLICE

Backing ring made from pile shell. Remove segment to allow reducing circumference and vertically rejoin with partial joint penetration weld.

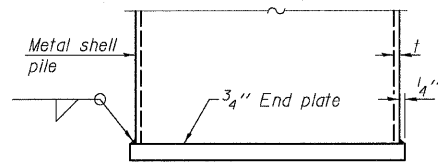
Note:
The metal shell piles shall be according to ASTM A 252 Grade 3.



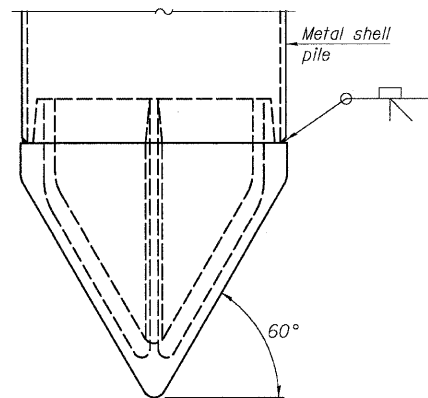
CONCRETE ENCASUREMENT AT PIERS



Note:
Forms for encasement may be omitted when soil conditions permit.



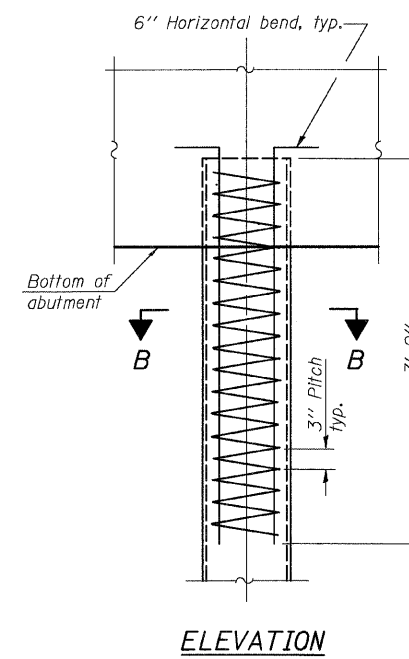
END PLATE ATTACHMENT



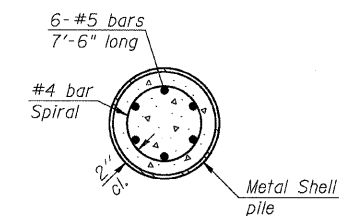
Note A:
When called for on the plans, the Contractor shall furnish metal shell pile shoes consisting of a single piece conical pile point as shown. The pile shoes shall be cast in one piece steel according to either ASTM A 148 Grade 90-60 or AASHTO M 103 Grade 65-35 and shall provide full bearing over the full circumference of the metal shell pile. The pile shoe shall have tapered leads to assure proper alignment and fitting and shall be secured to the pile with a circumferential weld.

METAL SHELL PILE SHOE ATTACHMENT

(See Note A)



METAL SHELL REINFORCEMENT AT ABUTMENTS



SECTION B-B

DESIGNED	CJB
CHECKED	PWO
DRAWN	DRP
CHECKED	PJM

F-MS

9-3-07



V3 Companies of Illinois Ltd.
7325 Janes Avenue
Woodridge, IL 60517
630.724.9200 phone
630.724.9202 fax
www.v3co.com

PILE DETAILS
ILL. ROUTE 23 OVER
KISHWAUKEE RIVER
F.A.P. RT. 324
McHENRY COUNTY
STATION 69+02.50
STRUCTURE NO. 056-0001