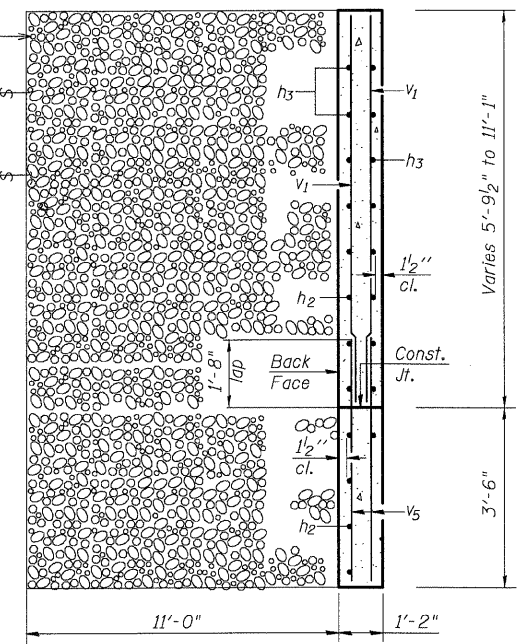
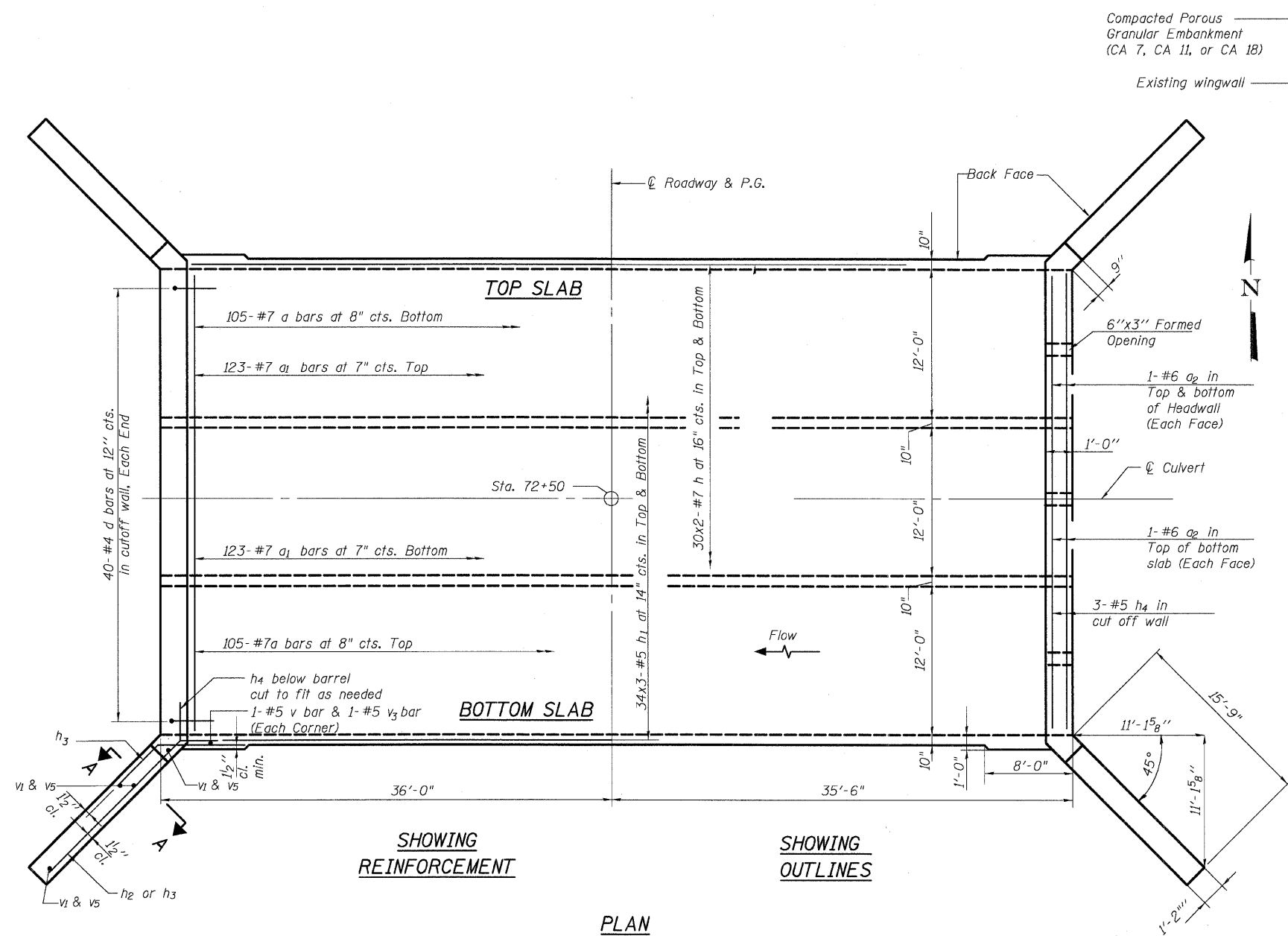


STATE OF ILLINOIS
DEPARTMENT OF TRANSPORTATION

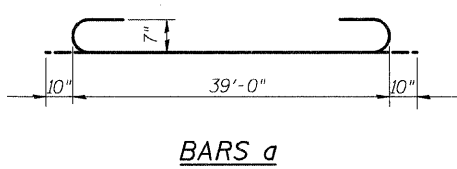
ROUTE NO.	SECTION	COUNTY	TOTAL SHEETS	SHEET NO.
F.A.P. 324	23B-1	McHENRY	97	67
FED. ROAD DIST. NO. 1	ILLINOIS	FED. AID PROJECT		

SHEET NO. 2
5 SHEETS

Contract # 62892



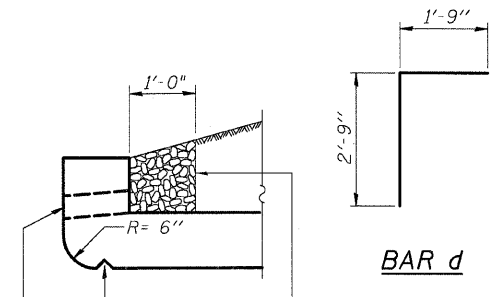
SECTION A-A



BARS a

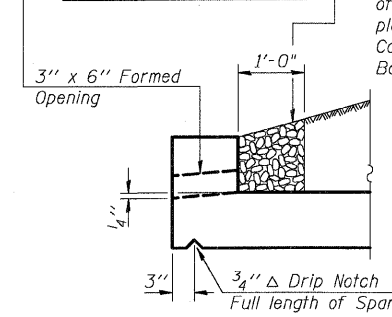
BILL OF MATERIAL

Bar	No.	Size	Length	Shape
a	210	#7	40'-8"	
a1	246	#7	39'-0"	
a2	12	#6	39'-0"	
d	80	#4	4'-6"	
h	164	#7	37'-0"	
h1	270	#5	24'-10"	
h2	72	#9	18'-6"	
h3	92	#9	8'-0"	
h4	6	#5	39'-0"	
v	220	#5	10'-2"	
v1	16	#4	11'-0"	
v2	286	#7	10'-2"	
v3	220	#5	2'-11"	
v4	286	#7	4'-0"	
v5	16	#4	5'-0"	
Concrete Box Culverts			Cu. Yd.	314
Reinforcement Bars			Pound	76,140



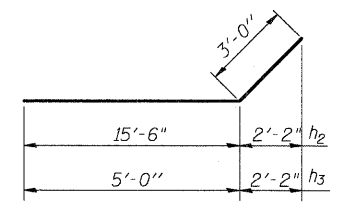
BAR d

AT UPSTREAM END



AT DOWNSTREAM END

DRAIN DETAIL



BARS h2 & h3

SLAB REINFORCEMENT PLAN

ILL. ROUTE 23 OVER
KISHWAUKEE RIVER
OVERFLOW NO. 1
F.A.P. RT. 324
MCHEMRY COUNTY
STATION 72+50.00
STRUCTURE NO. 056-0083

- Notes:
1. Bars indicated thus 34x3-#5 etc. indicates 34 lines of bars with 3 lengths per line.
 2. A distance of half the length of the wingwall but not less than six feet of the barrel shall be poured monolithically with the wingwalls.

Bar Laps Barrels:
Min. #5 bar = 1'-8"
Min. #7 bar = 2'-9"

DESIGNED	CJB
CHECKED	PWO
DRAWN	DRP
CHECKED	PJM