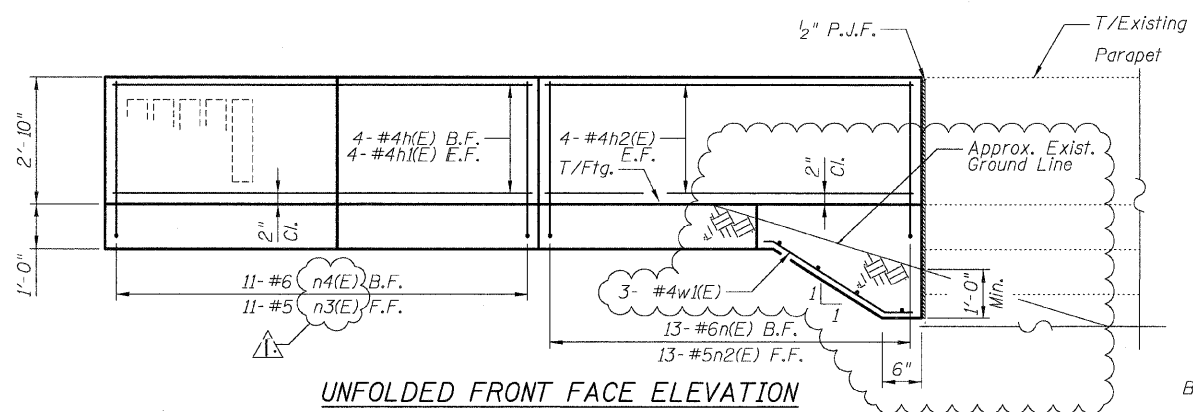


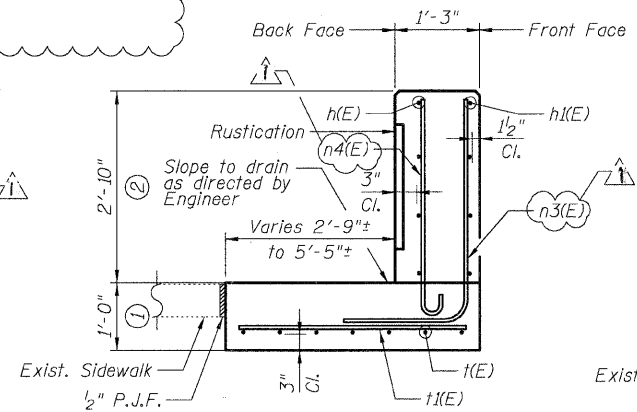
DETAIL A REINFORCEMENT SCHEDULE AND BILL OF MATERIAL

Bar	No.	Size	Length	Shape
h(E)	4	#4	9'-2"	└
h1(E)	4	#4	11'-0"	└
h2(E)	8	#4	12'-4"	└
n(E)	13	#6	5'-6"	L
n2(E)	13	#5	4'-0"	└
n3(E)	11	#5	5'-6"	L
n4(E)	11	#6	4'-0"	└
1(E)	7	#6	6'-2"	└
11(E)	7	#6	6'-4"	└
12(E)	13	#6	2'-2"	└
w(E)	3	#4	8'-4"	└
w1(E)	3	#4	3'-8"	└
Item		Unit	Qty.	
Concrete Structures		Cu. Yd.	2.8	
Concrete Superstructure		Cu. Yd.	3.1	
Reinforcement Bars, Epoxy Coated		Pound	610	
Rustication Finish		Sq. Ft.	17	
Protective Coat		Sq. Yd.	14	

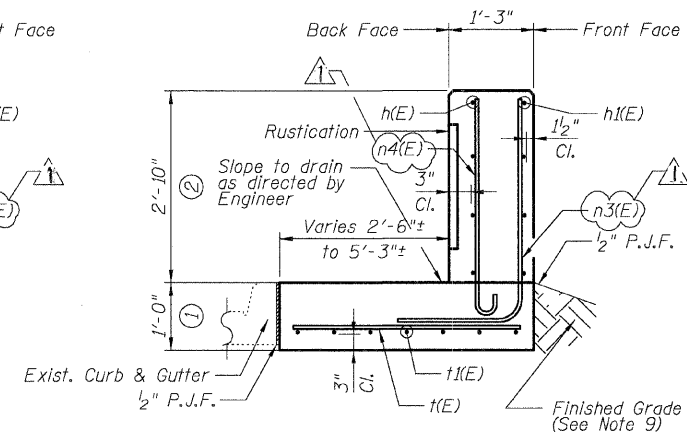
- NOTES:**
- All stations and offsets measured from S. La Salle St. E.
 - Back Face is face adjacent to Frontage Rd. and Front Face is face adjacent to Expressway.
 - Concrete: f'c = 3500 psi
 - Provide California Finish on top of foundation between stem and Frontage Road. See Roadway Details.
 - At locations where Fluted Knee Wall abuts a rigid structure, a 2" thick Preformed Expansion Joint Filler conforming to the shape of the structure shall be installed between the Fluted Knee Wall and the structure.
 - Apply Protective Coat to top and back face of stem and top of Frontage Road side of foundation.
 - For Fluted Knee Wall standard details, see Sheet SD-1
 - B.F. = Back Face (Frontage Road Side)
F.F. = Front Face (Expressway Side)
E.F. = Each Face
 - Shape finished grade as required to match existing conditions.
 - P.J.F. included in cost of concrete structures.



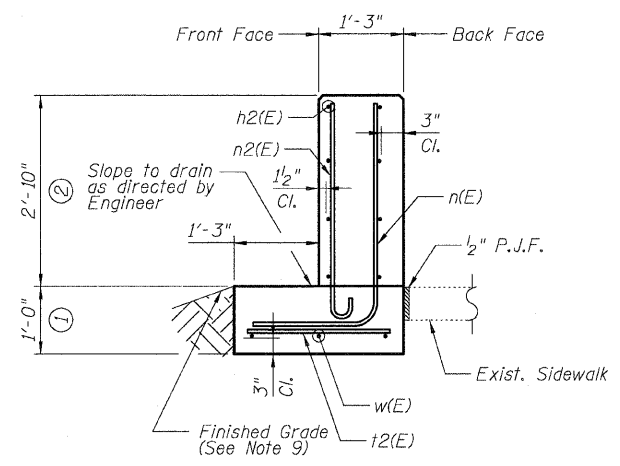
UNFOLDED FRONT FACE ELEVATION



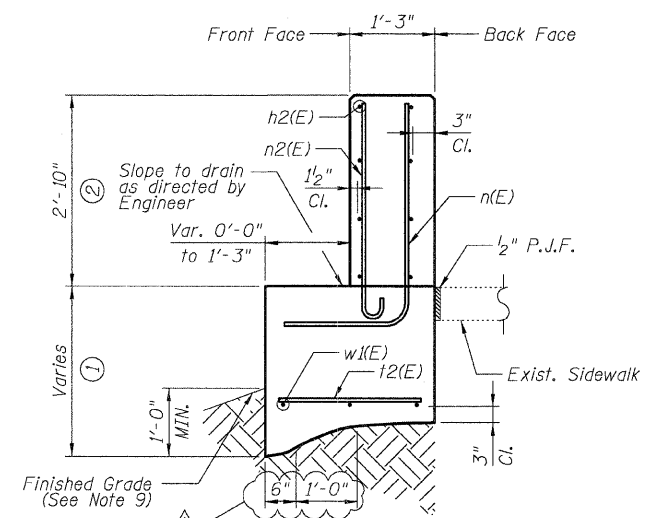
SECTION A-A



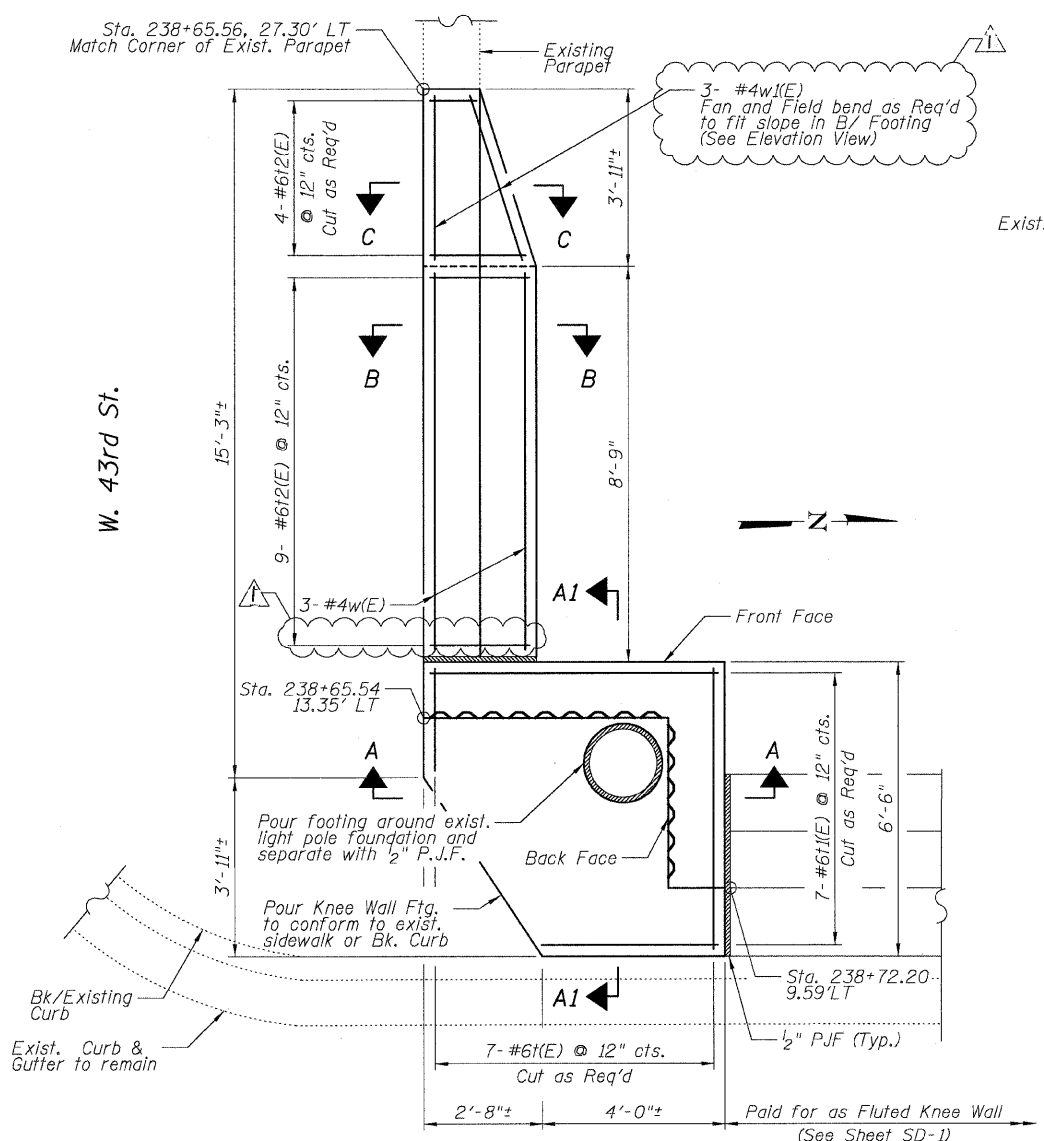
SECTION A1-A1



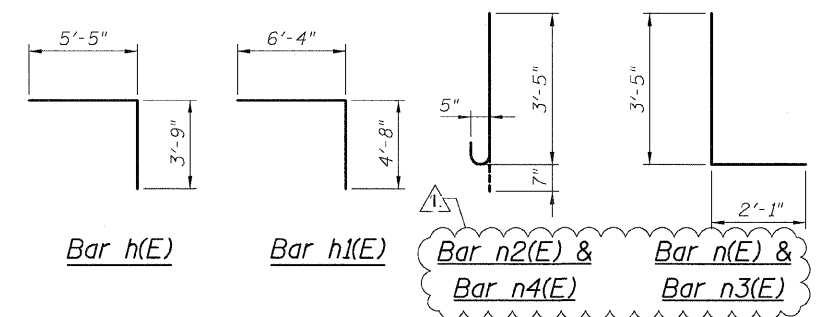
SECTION B-B



SECTION C-C



DETAIL A - PLAN



REVISIONS

NAME	DATE
ADDENDUM 1	7-16-08

SHEET SD-2

ILLINOIS DEPARTMENT OF TRANSPORTATION
F.A.I. 94/90 (DAN RYAN EXPRESSWAY)
NORTHBOUND KNEE WALLS (43RD ST TO ROOT ST)

DETAIL A

SCALE: NTS
DATE: 04/25/08

DRAWN BY: TL
CHECKED BY: BLU

BOWMAN, BARRETT & ASSOCIATES INC
CONSULTING ENGINEERS
Chicago, Illinois
312.228.0100
www.bbndainc.com

7/16/2008 5:54:20 PM