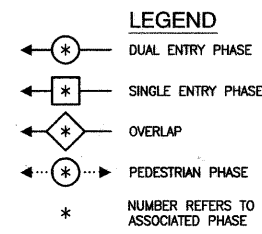
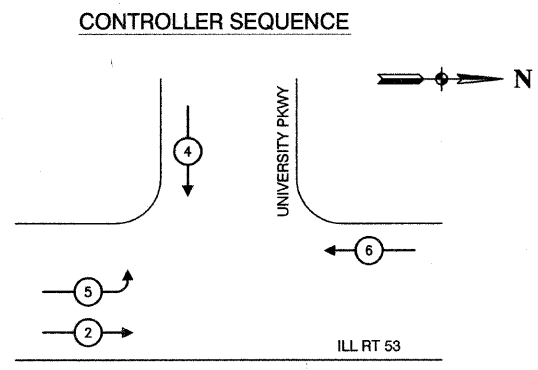
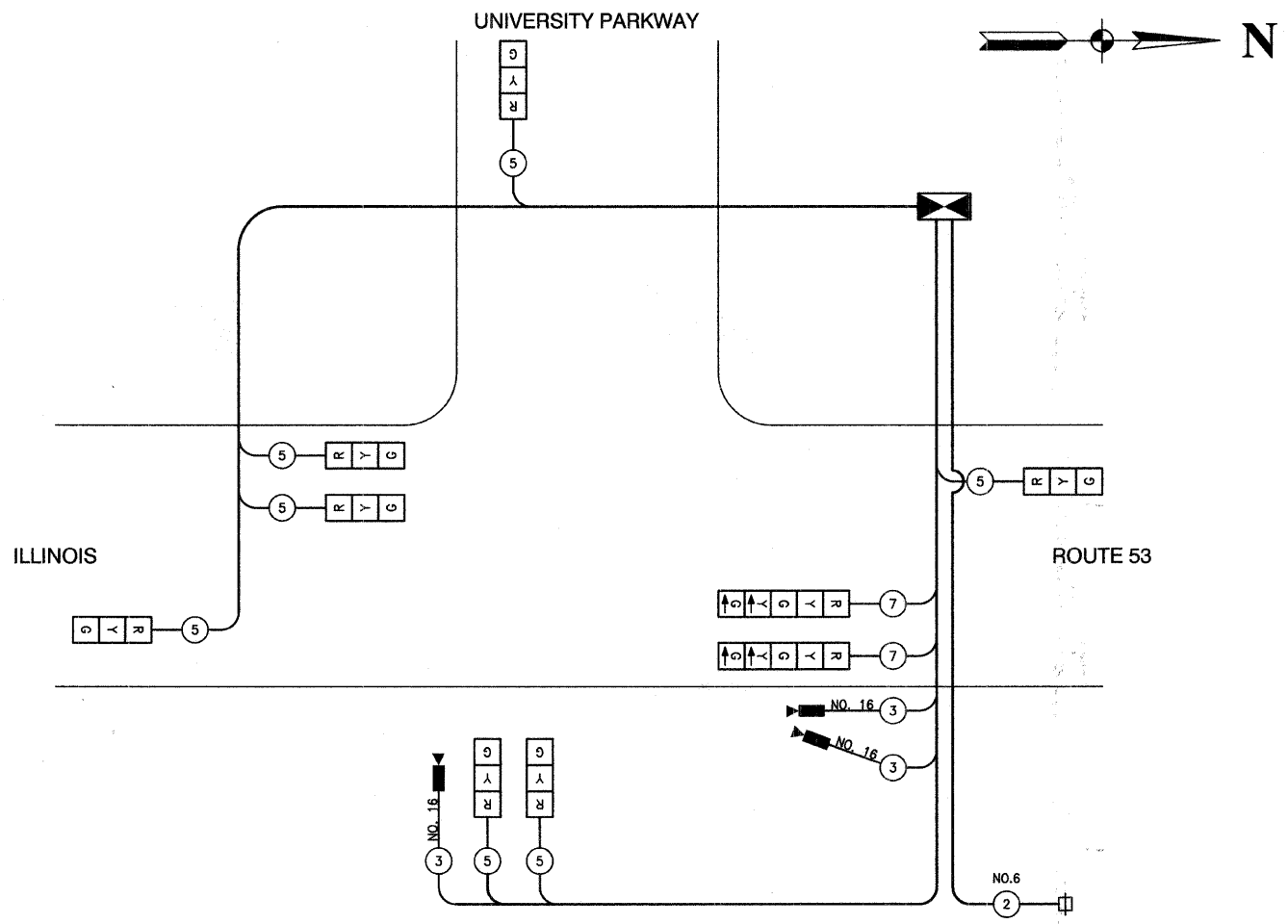


F. A. P. REC.	SECTION	COUNTY	TOTAL SHEETS	SHEET NO.
846	05-00047-00-CH	WILL	036	020
STA.		TO STA.		
FED. ROAD DIST. NO. 1		ILLINOIS	FED. AID PROJECT	

CONTRACT #63033



PHASE DESIGNATION DIAGRAM



CABLE PLAN

TEMPORARY CABLE PLAN LEGEND

- [R] 12" TRAFFIC SIGNAL SECTION
- [X] CONTROLLER CABINET
- [S] SERVICE INSTALLATION
- (2) DENOTES NUMBER OF CONDUCTORS. ALL CABLE NO. 14 EXCEPT AS INDICATED. ALL LOOP DETECTOR CABLE TO BE SHIELDED.
- [E] EMERGENCY VEHICLE LIGHT DETECTOR
- [C] CONFIRMATION BEACON
- [V] VEHICLE DETECTOR, INDUCTION LOOP
- [P] PUSHBUTTON DETECTOR
- [H] 12" PEDESTRIAN SIGNAL SECTION
- [CAM] VIDEO DETECTION CAMERA

I.D.O.T. TRAFFIC SIGNAL INSTALLATION ELECTRICAL SERVICE REQUIREMENTS					TOTAL WATTAGE
TYPE	NO. LAMPS	WATTAGE		% OPERATION	
		INCAND.	LED		
SIGNAL (RED)	9	135	17	0.50	76.5
(YELLOW)	9	135	25	0.25	56.25
(GREEN)	9	135	15	0.25	33.75
ARROW	4	135	12	0.10	4.8
PED. SIGNAL	-	90	25	1.00	-
CONTROLLER	1	100	100	1.00	100.0
ILLUM. SIGN	-	84	-	0.05	-
FLASHER	-	-	-	0.50	-
ENERGY COSTS TO:					TOTAL = 271.30
LEWIS UNIVERSITY					
ONE UNIVERSITY PARKWAY					
ROMEDEVILLE, IL 60448					
ENERGY SUPPLY CONTACT: MARK ANDERSON					
PHONE: (615) 724-5988					
COMPANY: COMMONWEALTH EDISON					

REVISIONS	
NAME	DATE

ILLINOIS DEPARTMENT OF TRANSPORTATION

**IL RTE 53 AT UNIVERSITY PARKWAY
TEMPORARY CABLE PLAN
AND PHASE DESIGNATION DIAGRAM**

SCALE: VERT. NA
HORIZ. 1"=20'

DATE: 8-29-08

DRAWN BY: BK
CHECKED BY: WD