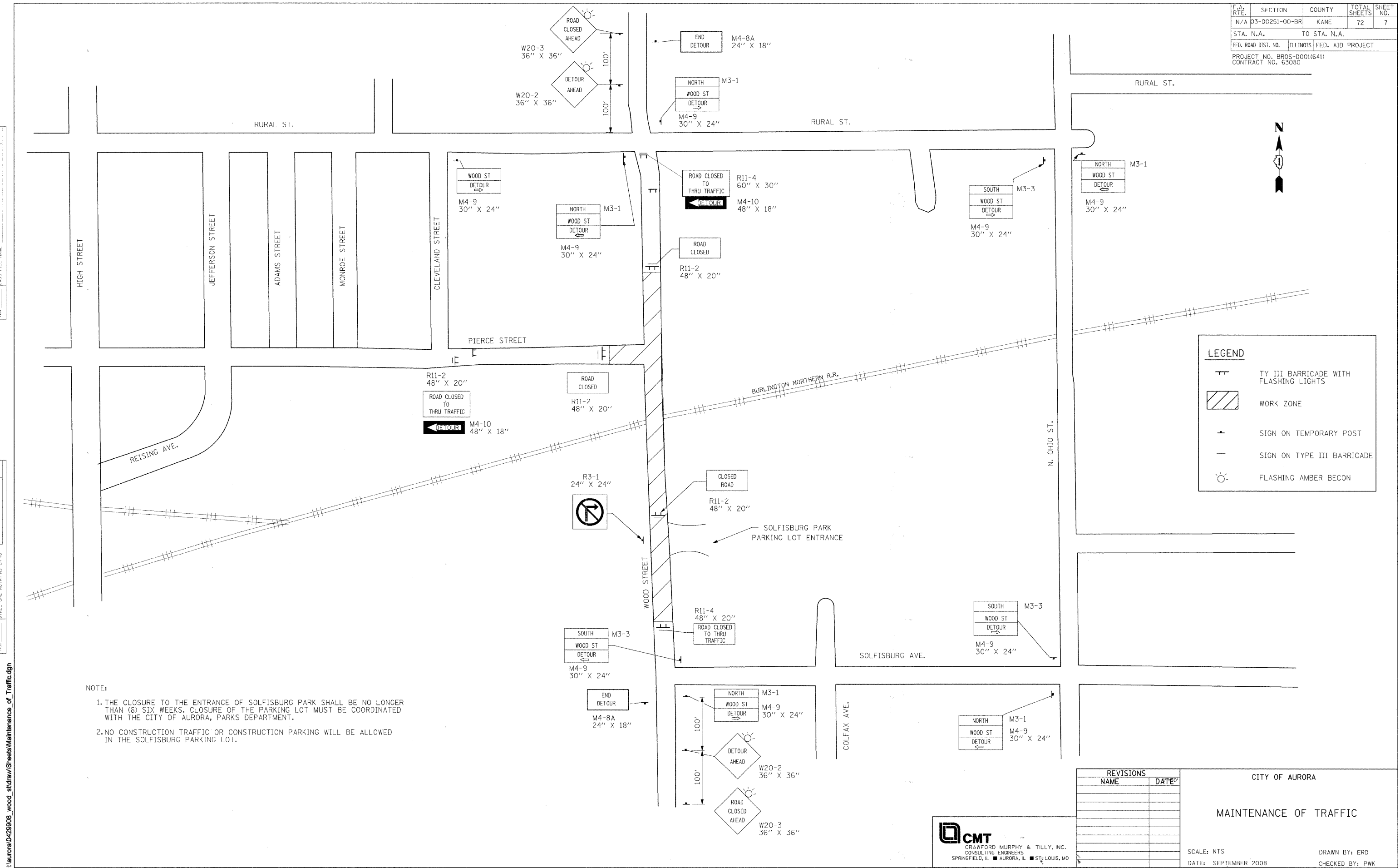


F.A. RTE.	SECTION	COUNTY	TOTAL SHEETS	SHEET NO.
N/A	03-00251-00-BR	KANE	72	7
STA. N.A.		TO STA. N.A.		
FED. ROAD DIST. NO.		ILLINOIS FED. AID PROJECT		
PROJECT NO. BROS-001(641) CONTRACT NO. 63080				

PLAN	DATE
SURVEYED	BY
ALIGNED	PLOTTED
NOTE BOOK	NO.
CAD FILE NAME	

PROFILE	DATE
GRADES CHECKED	BY
STRUCTURE NOTATIONS OK'D	
NO.	



NOTE:
 1. THE CLOSURE TO THE ENTRANCE OF SOLFISBURG PARK SHALL BE NO LONGER THAN (6) SIX WEEKS. CLOSURE OF THE PARKING LOT MUST BE COORDINATED WITH THE CITY OF AURORA, PARKS DEPARTMENT.
 2. NO CONSTRUCTION TRAFFIC OR CONSTRUCTION PARKING WILL BE ALLOWED IN THE SOLFISBURG PARKING LOT.

LEGEND

- TY III BARRICADE WITH FLASHING LIGHTS
- WORK ZONE
- SIGN ON TEMPORARY POST
- SIGN ON TYPE III BARRICADE
- FLASHING AMBER BEACON

REVISIONS	
NAME	DATE

CITY OF AURORA
MAINTENANCE OF TRAFFIC
 SCALE: NTS
 DATE: SEPTEMBER 2008
 DRAWN BY: ERD
 CHECKED BY: PWK

CMT
 CRAWFORD MURPHY & TILLY, INC.
 CONSULTING ENGINEERS
 SPRINGFIELD, IL ■ AURORA, IL ■ ST. LOUIS, MO

I:\Aurora\0429908_wood_st\Draw\Sheets\Maintenance_of_Traffic.dgn