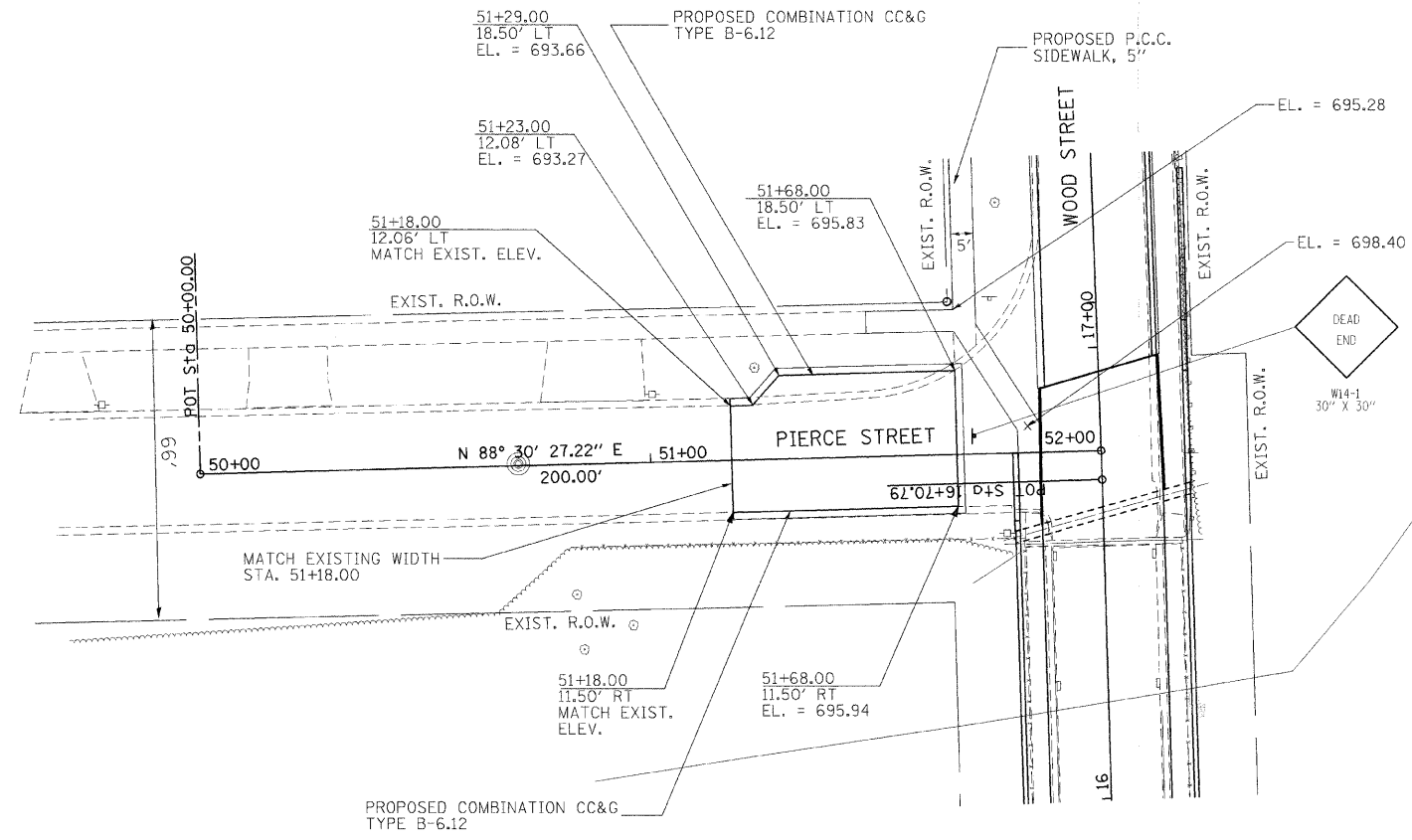
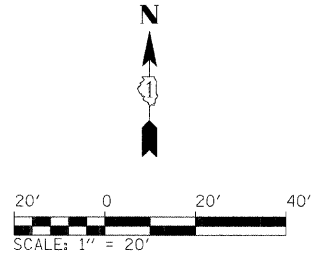


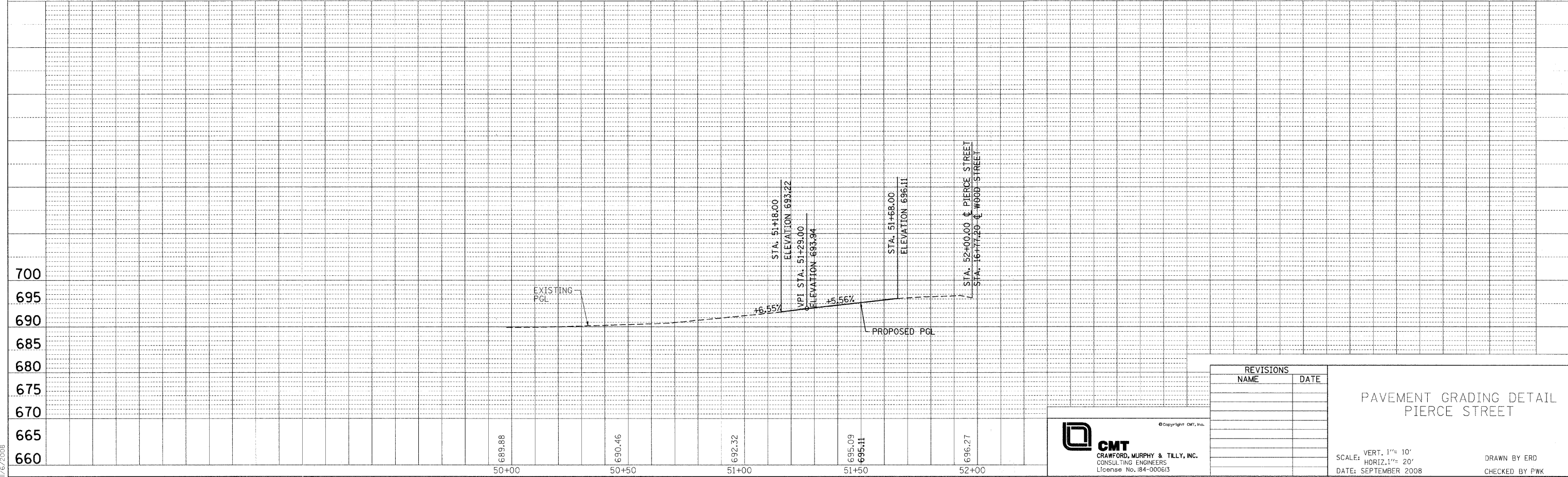
F.A. RTE.	SECTION	COUNTY	TOTAL SHEETS	SHEET NO.
	03-00251-00-BR	KANE	72	15
STA.	TO STA.			
FED. ROAD DIST. NO. 5 ILLINOIS FED. AID PROJECT				
PROJECT NO. BROS-0001(641)				
CONTRACT NO. 63080				



- NOTE:
THE CONTRACTOR SHALL PLACE A "NO OUTLET" SIGN (W14-2) AT THE INTERSECTION OF PIERCE STREET AND CLEVELAND STREET AT THE LOCATION SPECIFIED BY THE ENGINEER.
- THE STATION / OFFSET / ELEVATIONS SHOWN ON THE PLAN REFER TO THE EDGE OF PAVEMENT.

PLAN	DATE
NO.	
BY	
DESIGNED	
CHECKED	
DATE	

PROFILE	DATE
NO.	
BY	
DESIGNED	
CHECKED	
DATE	



REVISIONS	
NAME	DATE

PAVEMENT GRADING DETAIL
PIERCE STREET



SCALE: VERT. 1" = 10'
HORIZ. 1" = 20'
DATE: SEPTEMBER 2008
DRAWN BY ERD
CHECKED BY PWK

L:\ALIBORA\0429908_#road_51\Draw\Sheets\Intersection.dgn
11/6/2008