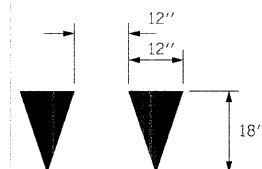
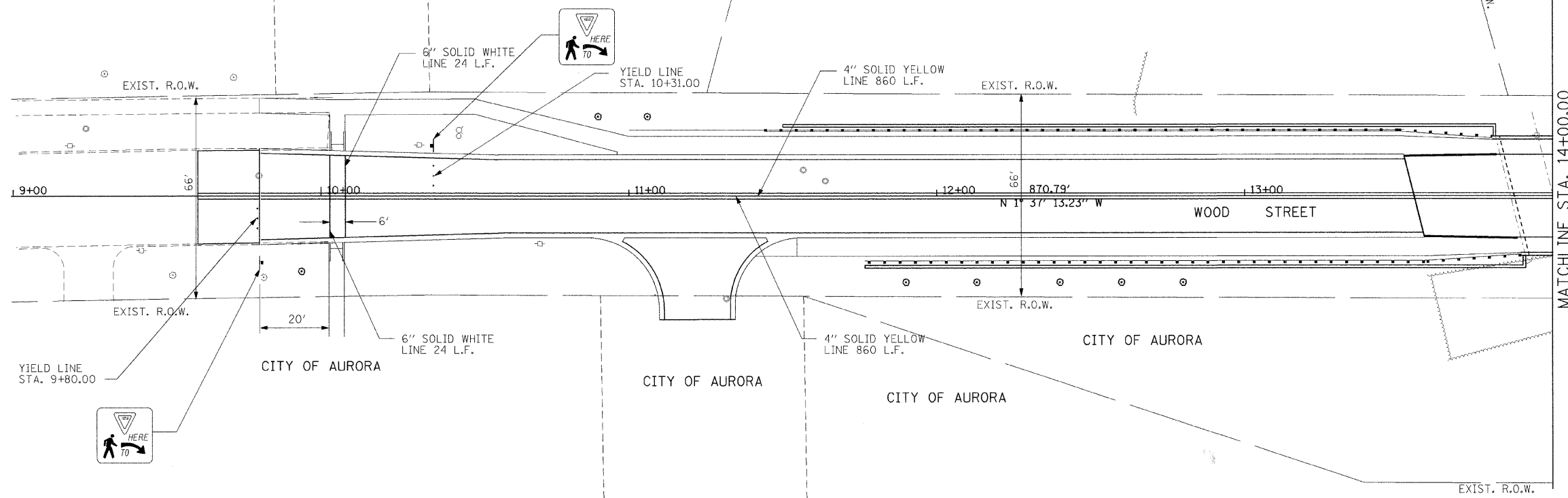
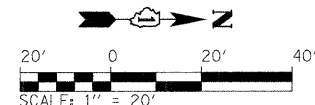


F.A. RTE.	SECTION	COUNTY	TOTAL SHEETS	SHEET NO.
N/A	03-00251-00-BR	KANE	72	16
STA. 9+80.00		TO STA. 17+95.00		
FED. ROAD DIST. NO.		ILLINOIS FED. AID PROJECT		
PROJECT NO. BROS-0001641				
CONTRACT NO. 63080				

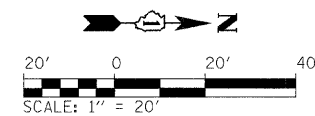
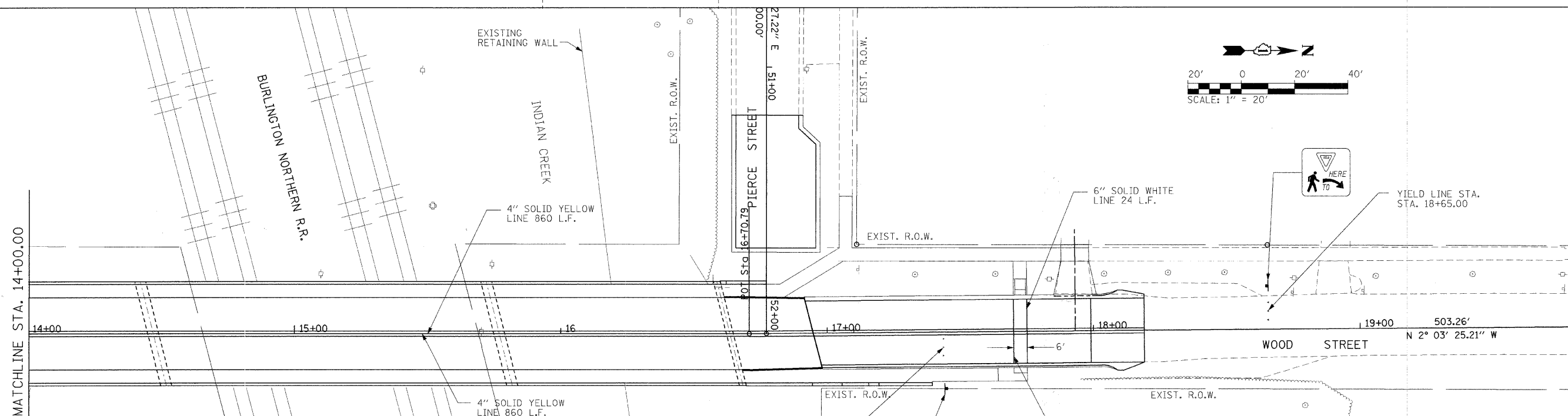


YIELD LINE DETAIL

NOTE:
YIELD LINE PAVEMENT MARKING SHALL BE WHITE

PLAN	DATE
BY	
REVISION	
NO.	
DATE	
BY	
REVISION	
NO.	
DATE	

PROFILE	DATE
BY	
REVISION	
NO.	
DATE	
BY	
REVISION	
NO.	
DATE	



REVISIONS	
NAME	DATE

CITY OF AURORA
PAVEMENT MARKING
SHEET 1 OF 1

CMT
CRAWFORD MURPHY & TILLY, INC.
CONSULTING ENGINEERS
SPRINGFIELD, IL ■ AURORA, IL ■ ST. LOUIS, MO

SCALE: 1" = 20'
DATE: SEPTEMBER 2008
DRAWN BY: ERD
CHECKED BY: PWK

L:\AURORA\042908_Wood_SitDraw\Sheets\Pavmarking.dgn