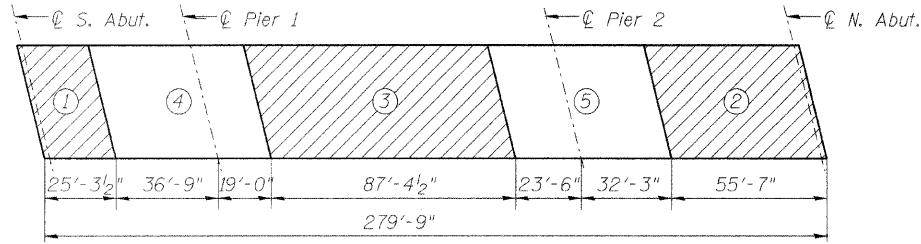


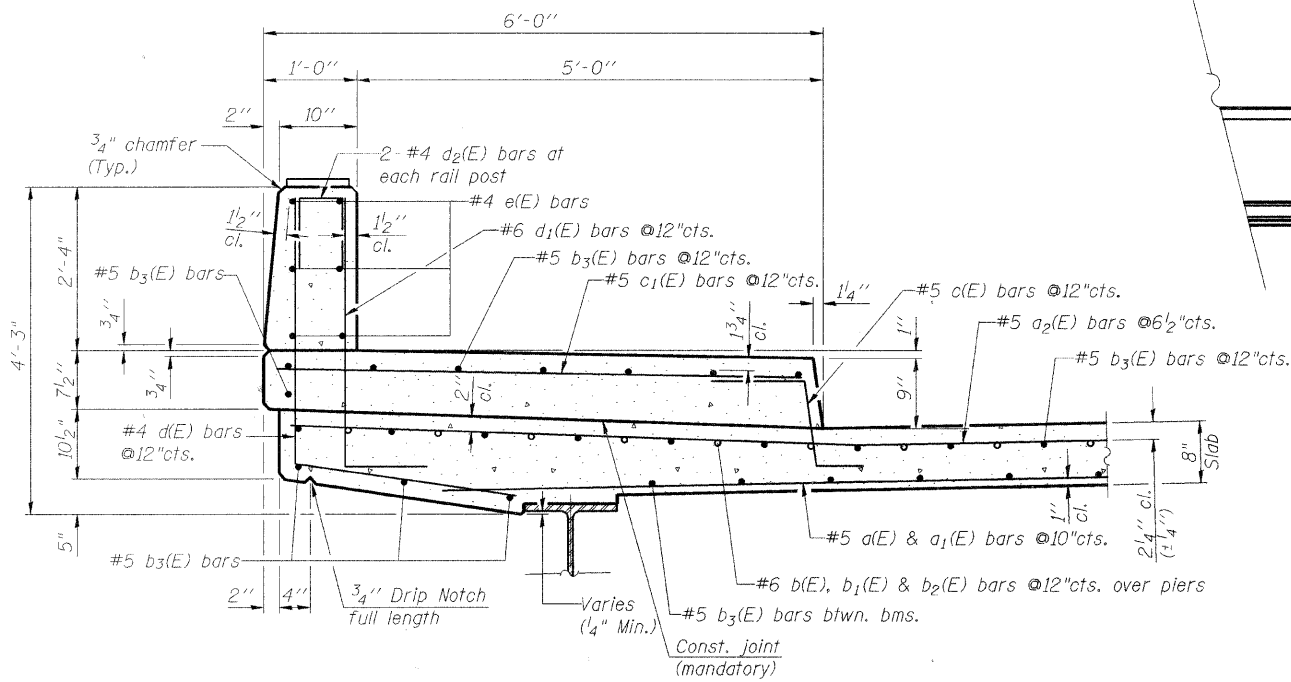
Project No. BR05-D001641
Contract No. 63080



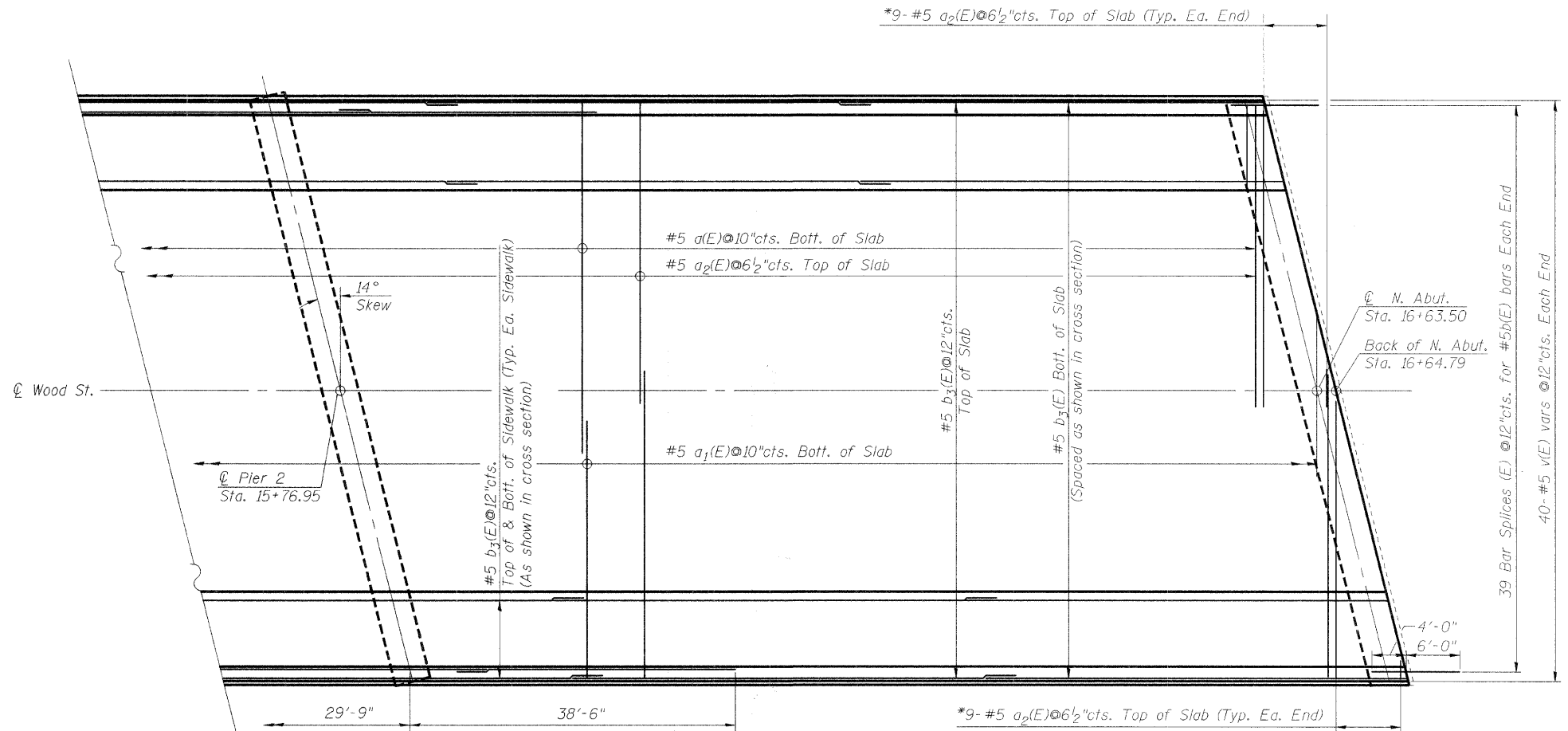
① Indicates pouring sequence

DECK POURING SEQUENCE

Contractor may propose alternate pouring sequence. Coordinate w/RE & City of Aurora prior to construction.



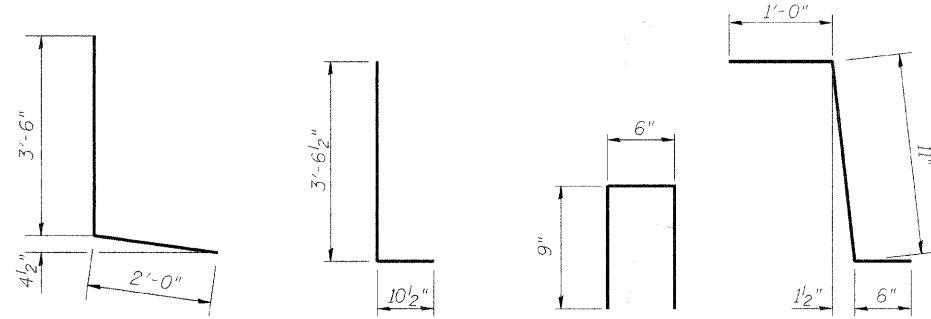
SECTION THRU SIDEWALK



PARTIAL PLAN

*Order a(E), a1(E), & a2(E) bars full length. Cut to fit skew and use remainder of bars in opposite end.

Notes:
See Sheet 12 of 32 for superstructure details and Bill of Material.
Bars indicated thus 20 x 3-#5 etc. indicates 20 lines of bars with 3 lengths per line.
See Sheet 12 of 32 for parapet reinforcement.



MINIMUM BAR LAP

#5 bars = 2'-2"
#6 bars = 2'-7"

DESIGNED	200
CHECKED	EXAMINED
DRAWN	PASSED
CHECKED	ENGINEER OF BRIDGES AND STRUCTURES

CMT
CRAWFORD MURPHY & TILLY, INC.
CONSULTING ENGINEERS
SPRINGFIELD, IL ■ AURORA, IL ■ ST. LOUIS, MO
ROCKFORD, IL ■ PEORIA, IL ■ CHICAGO, IL

REVISIONS	
NAME	DATE

ILLINOIS DEPARTMENT OF TRANSPORTATION
SUPERSTRUCTURE-II
WOOD ST. BRIDGE OVER B.N.S.F. R.R.
AND INDIAN CREEK
SECTION -BR STATION 15+24.92
KANE COUNTY STRUCTURE NO. 045-6022

SCALE:
DATE: SEPTEMBER 2008
DRAWN BY: MCC
CHECKED BY: ATI