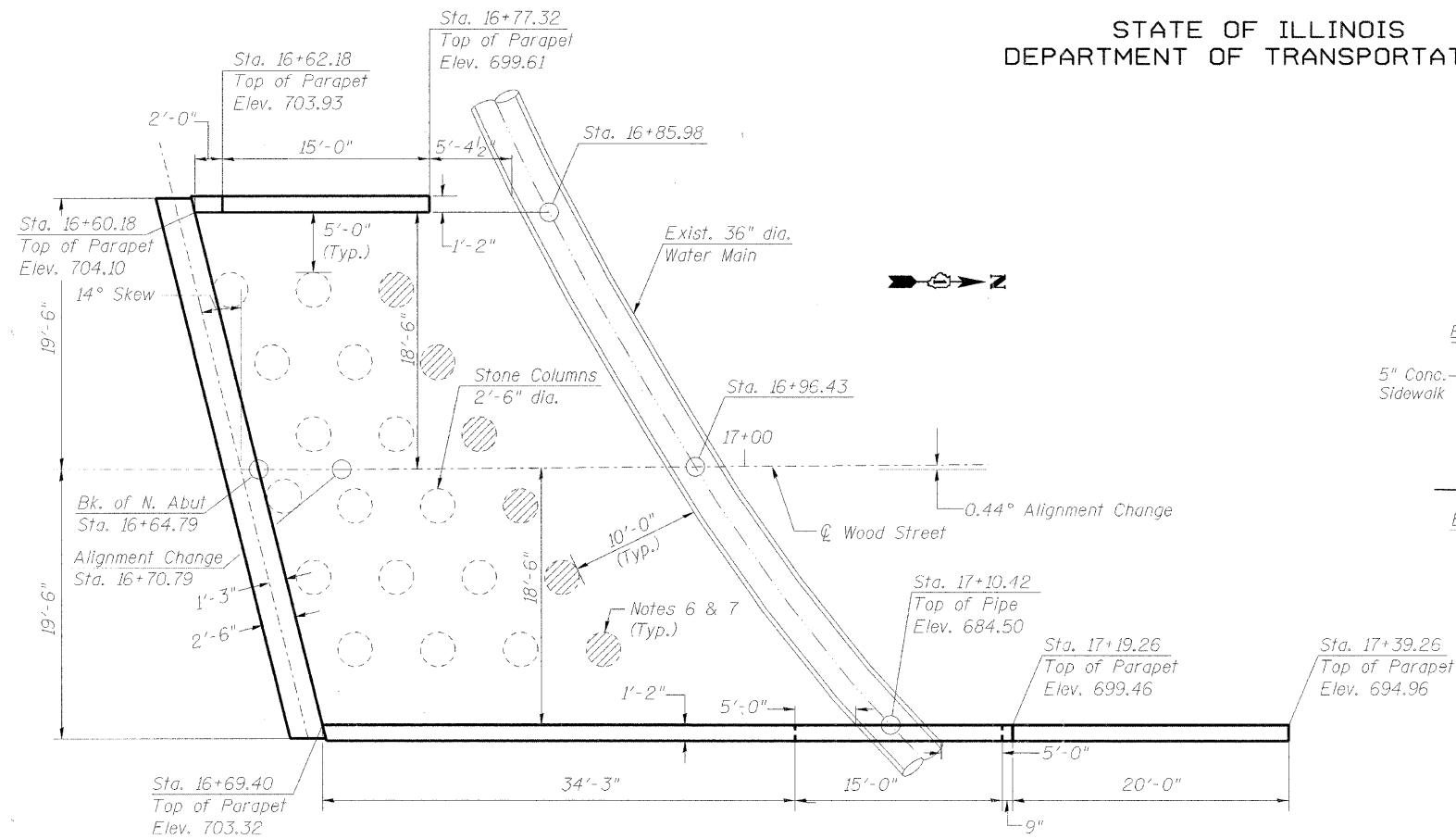


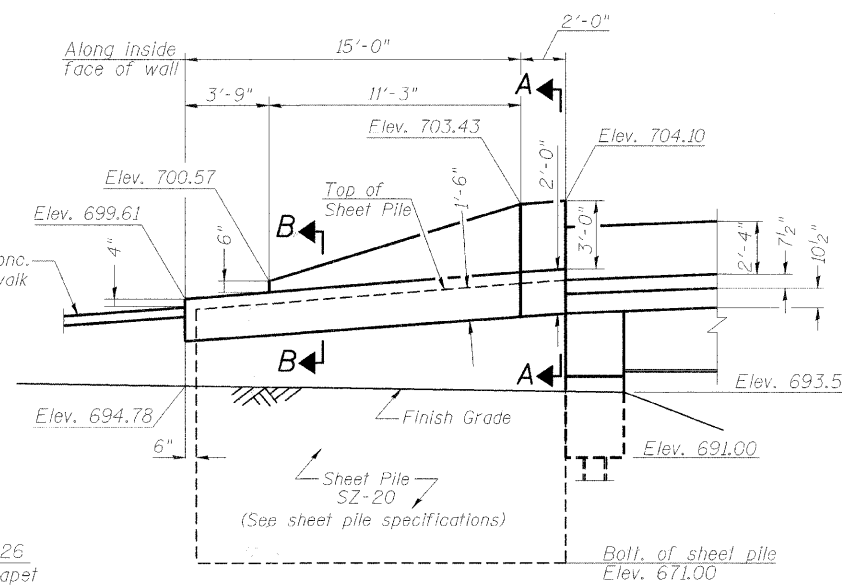
STATE OF ILLINOIS  
DEPARTMENT OF TRANSPORTATION

ROUTE NO.	SECTION	COUNTY	TOTAL SHEETS	SHEET NO.	SHEET NO. 5-26
		KANE	72	45	SHEETS 33
FED. ROAD DIST. NO. 7		ILLINOIS		FED. AID PROJECT	

Project No. BR05-D001(64)  
Contract No. 63080



**SHEET PILE WALLS - PLAN**  
N.T.S.



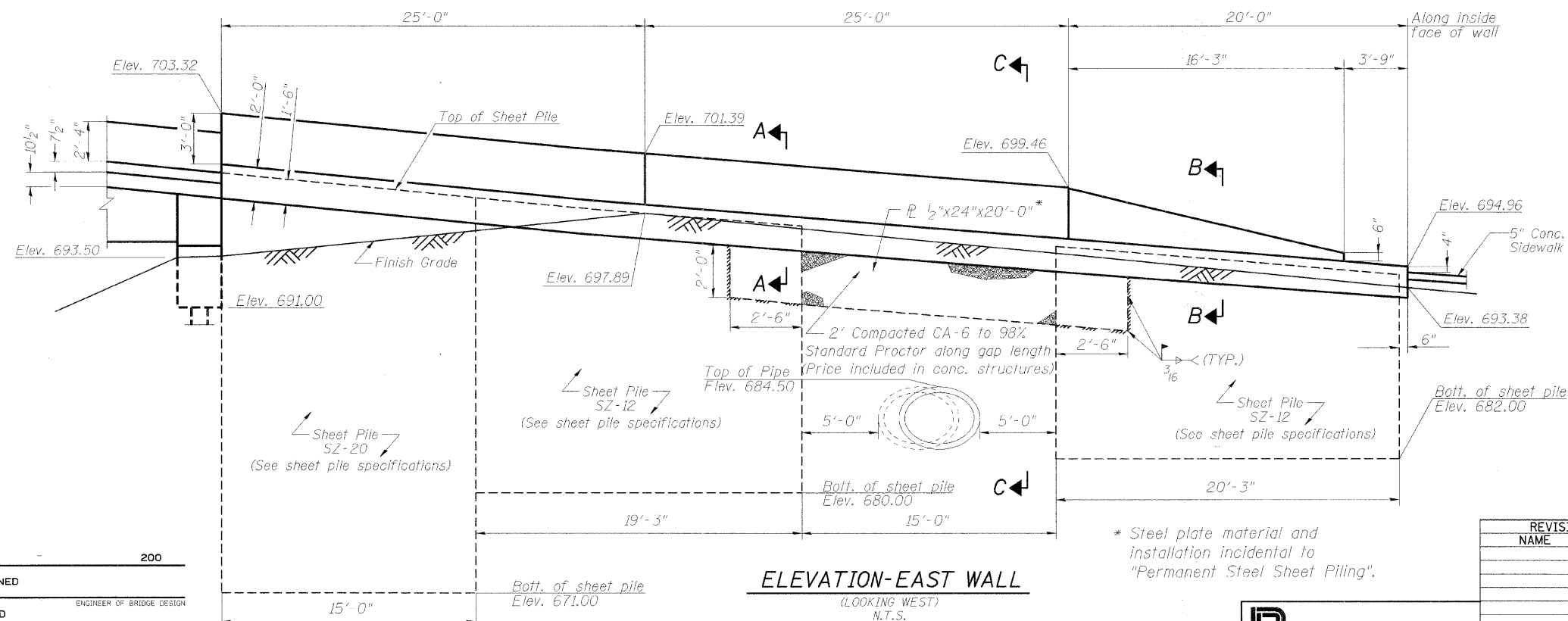
**ELEVATION-WEST WALL**  
(LOOKING EAST)  
N.T.S.

**SHEET PILE SPECIFICATIONS**

$f_y = 50,000$  psi  
SZ-12:  $S_x = 5.1$  in<sup>3</sup>/ft (effective section modulus)  
SZ-20:  $S_x = 12.0$  in<sup>3</sup>/ft (effective section modulus)

**NOTES:**

- See special provisions for stone columns for performance criteria.
- The target bottom elevation of the stone columns is estimated at 682.00. This elevation is to be verified by the Stone Column Designers.
- See sheet S-27 of 33 for barrier reinforcement details.
- Contractor shall locate the EXACT location of the 36" dia. transmission main prior to driving sheet piles.
- Contractor shall drive sheet piles with least impact and vibration near the 36" dia. transmission main.
- Contractor may consider compaction grouting alternative near the exist. 36" transmission main for ground improvement to reduce vibration along watermain.
- Contractor to carefully monitor the transmission main by visual observation, settlement rods and vibration monitors (geophones) during ground improvement process.



**ELEVATION-EAST WALL**  
(LOOKING WEST)  
N.T.S.

\* Steel plate material and installation incidental to "Permanent Steel Sheet Piling".

DESIGNED	200
CHECKED	EXAMINED
DRAWN	PASSED
CHECKED	ENGINEER OF BRIDGE DESIGN
	ENGINEER OF BRIDGES AND STRUCTURES

REVISIONS	
NAME	DATE

ILLINOIS DEPARTMENT OF TRANSPORTATION  
**SHEET PILE WALL DETAILS I**  
WOOD ST. BRIDGE OVER B.N.S.F. R.R.  
AND INDIAN CREEK  
SECTION - BR STATION 15+24.92  
KANE COUNTY STRUCTURE NO. 045-6022

**CMT**  
CRAWFORD MURPHY & TILLY, INC.  
CONSULTING ENGINEERS  
SPRINGFIELD, IL ■ AURORA, IL ■ ST. LOUIS, MO  
ROCKFORD, IL ■ PEORIA, IL ■ CHICAGO, IL

SCALE: DRAWN BY: MCC  
DATE: SEPTEMBER 2008 CHECKED BY: ATI